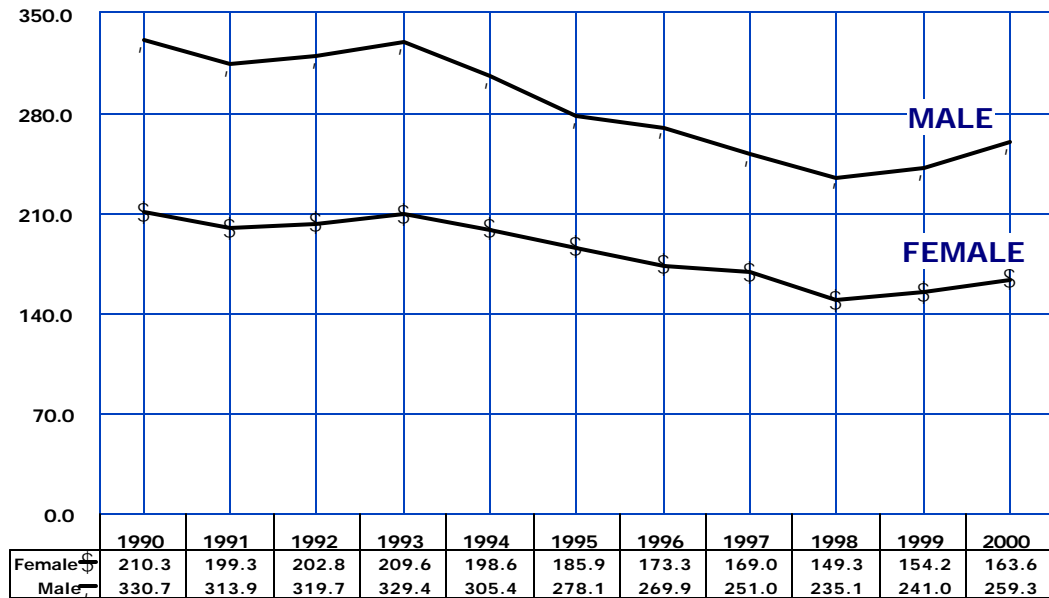
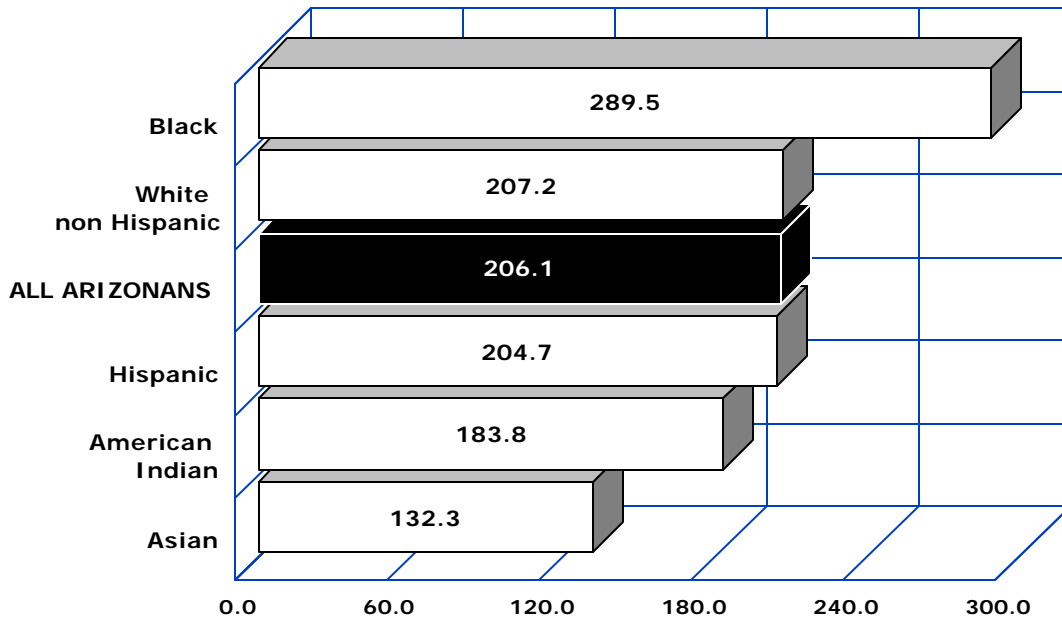


**Figure 2B-2**  
**Age-Adjusted Mortality Rates for Diseases of Heart**  
**by Gender and Year, Arizona, 1990-2000**



Number of deaths per 100,000 population  
age-adjusted to the 2000 U.S. standard

**Figure 2B-3**  
**Age-Adjusted Mortality Rates for Diseases of Heart**  
**by Race/Ethnic Group, Arizona, 2000**



Number of deaths per 100,000 population  
age-adjusted to the 2000 U.S. standard