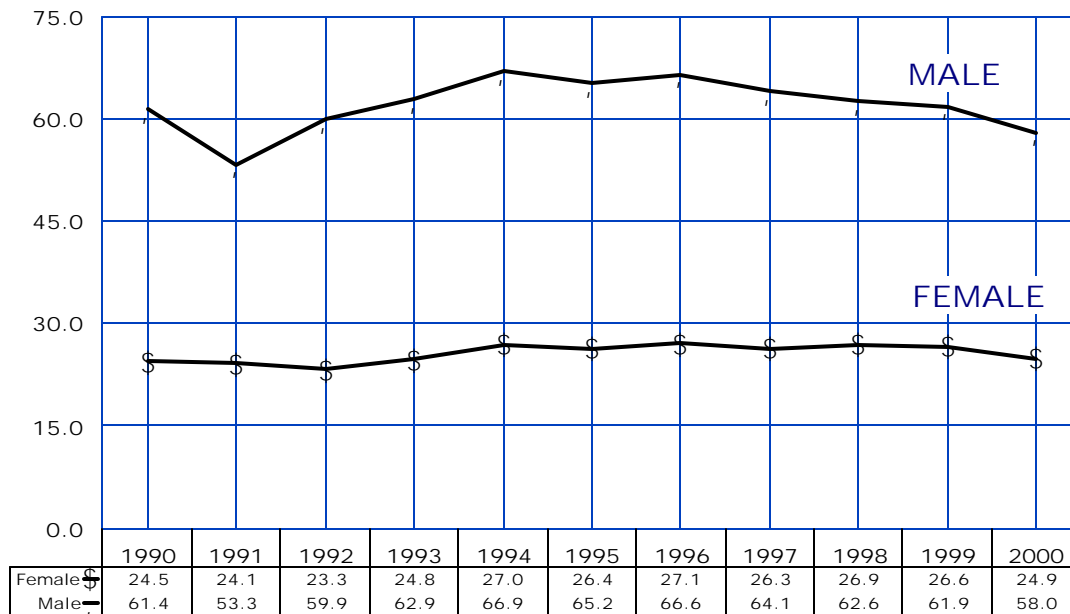
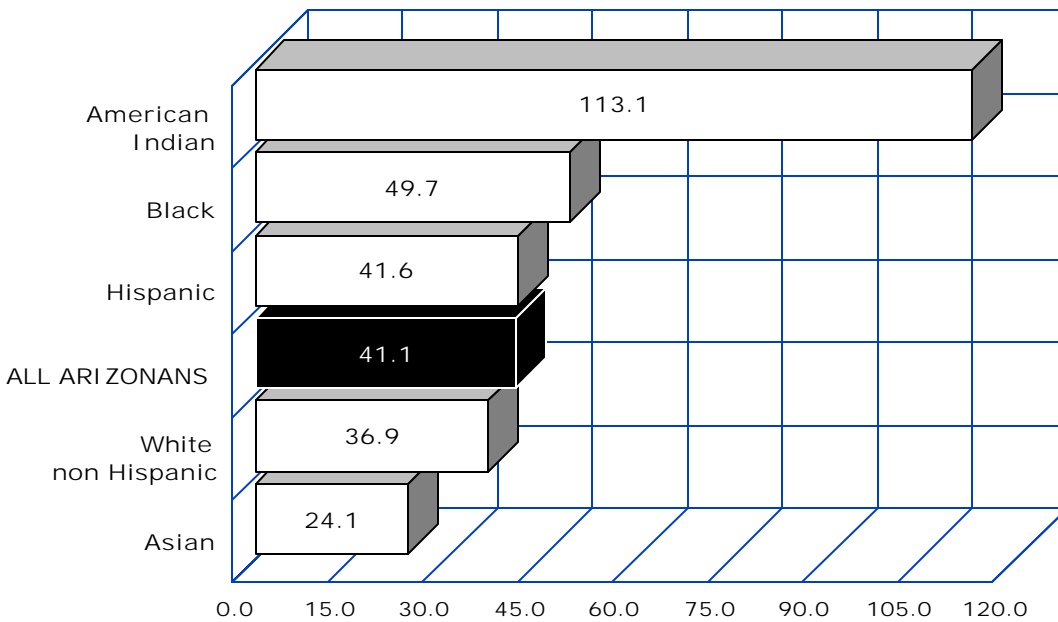


Figure 2B-10  
Age-Adjusted Mortality Rates for Accidents (unintentional injuries) by Gender and Year, Arizona, 1990-2000



Number of deaths per 100,000 population age-adjusted to the 2000 U.S. standard

Figure 2B-11  
Age-Adjusted Mortality Rates for Accidents (unintentional injuries) by Race/Ethnic Group, Arizona, 2000



Number of deaths per 100,000 population age-adjusted to the 2000 U.S. standard