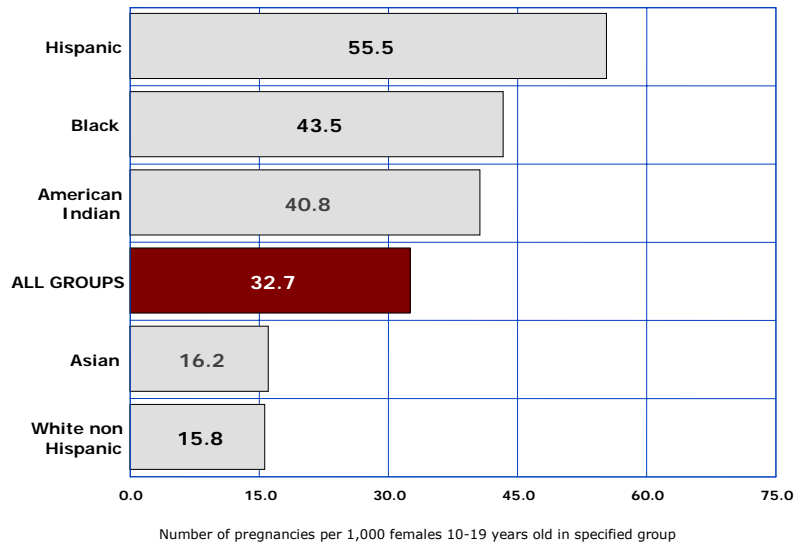


1 Teen Pregnancies

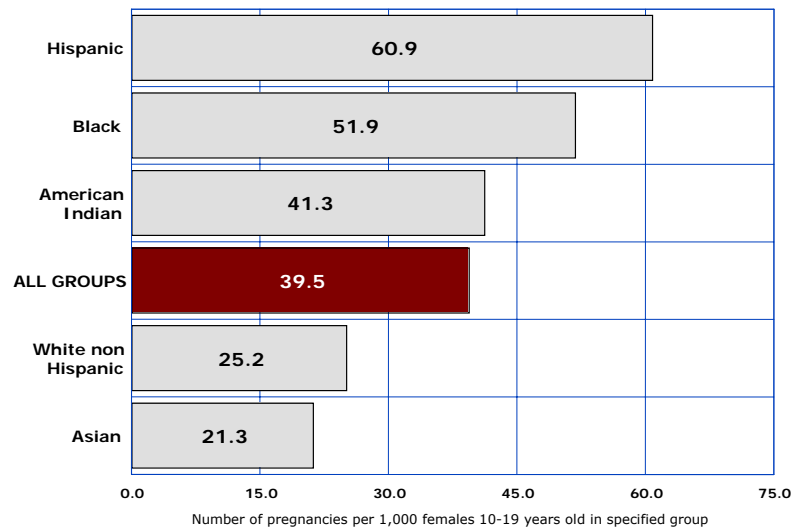
- 1-1 Pregnancies Among Females 19 or Younger**
- 1-2 Pregnancies Among Females 14 or Younger**
- 1-3 Pregnancies Among Females 15-17 Years Old**
- 1-4 Pregnancies Among Females 18-19 Years Old**

1-1 PREGNANCIES AMONG FEMALES 19 OR YOUNGER

2005



2000

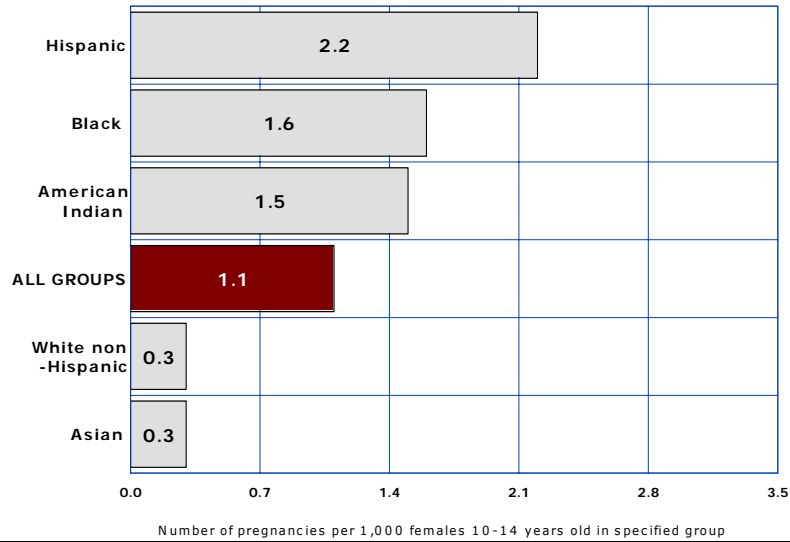


COMPARATIVE RATES FOR 2000 AND 2005

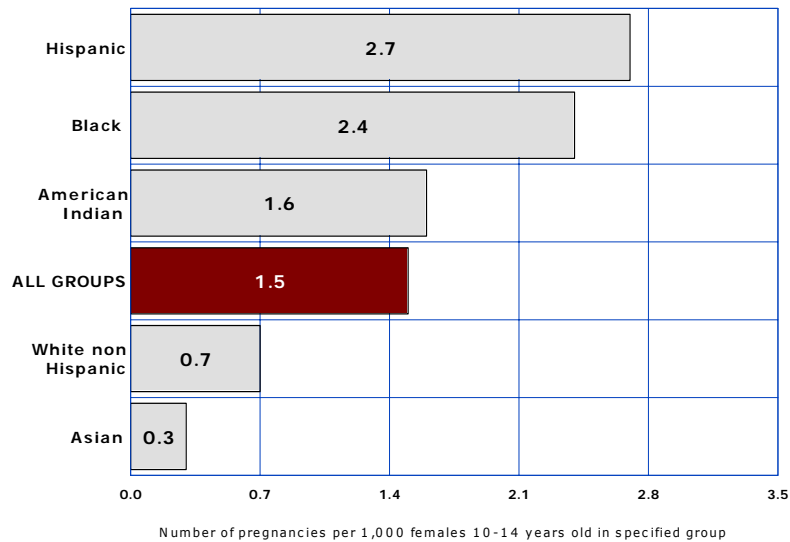
Rate per 1,000 females by race/ethnicity						
Year	All groups	White non-Hispanic	Hispanic or Latino	Black or African American	American Indian or Alaska Native	Asian or Pacific Islander
2000	39.5	25.2	60.9	51.9	41.3	21.3
2005	32.7	15.8	55.5	43.5	40.8	16.2
% change from 2000	-17.2	-37.3	-8.9	-16.2	-1.2	-23.9

1-2 PREGNANCIES AMONG FEMALES 14 OR YOUNGER

2005



2000

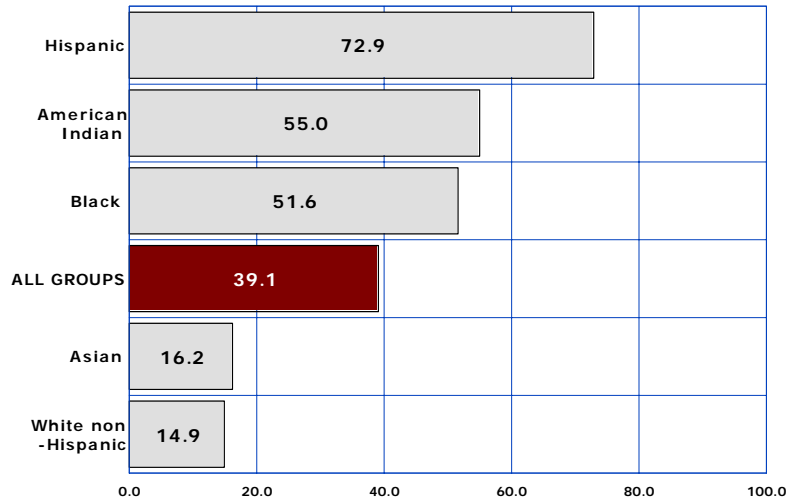


COMPARATIVE RATES FOR 2000 AND 2005

Rate per 1,000 females by race/ethnicity						
Year	All groups	White non-Hispanic	Hispanic or Latino	Black or African American	American Indian or Alaska Native	Asian or Pacific Islander
2000	1.5	0.7	2.7	2.4	1.6	0.3
2005	1.1	0.3	2.2	1.6	1.5	0.3
% change from 2000	-26.7	-57.1	-18.5	-33.3	-6.3	0.0

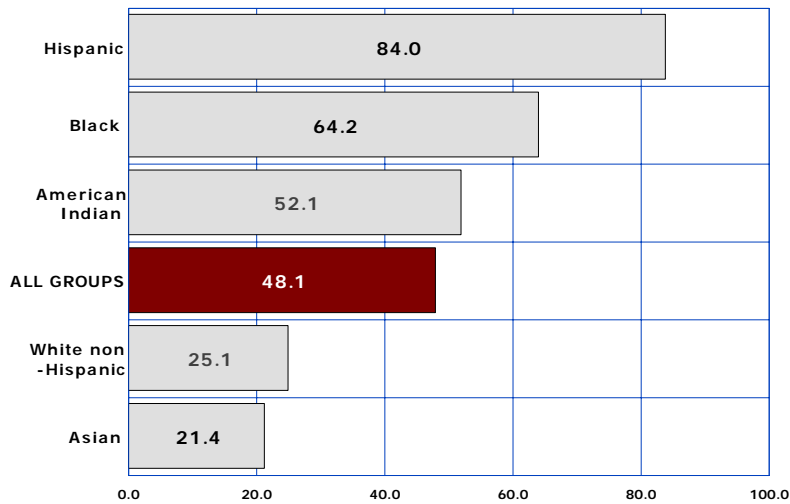
1-3 PREGNANCIES AMONG FEMALES 15-17 YEARS OLD

2005



Number of pregnancies per 1,000 females 15-17 years old in specified group

2000



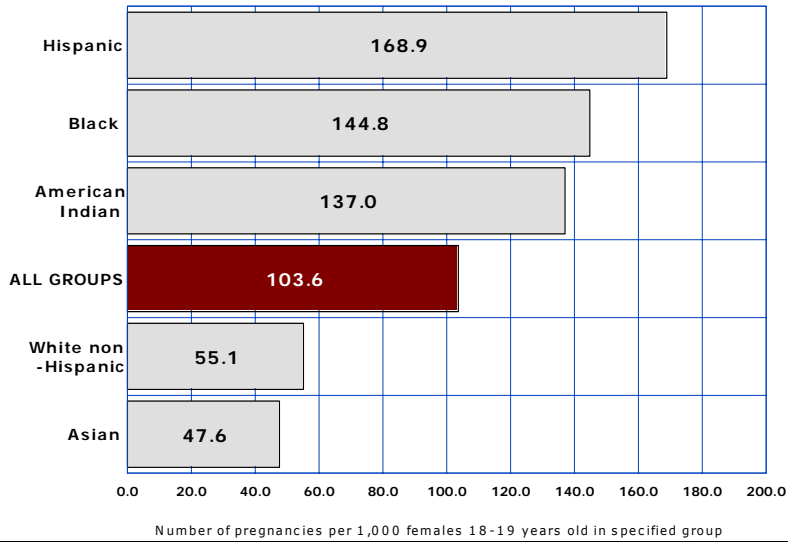
Number of pregnancies per 1,000 females 15-17 years old in specified group

COMPARATIVE RATES FOR 2000 AND 2005

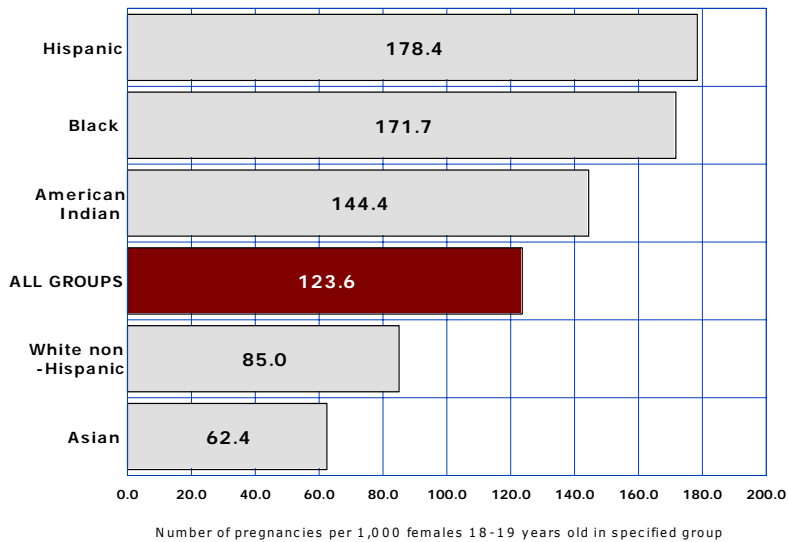
Rate per 1,000 females by race/ethnicity						
Year	All groups	White non-Hispanic	Hispanic or Latino	Black or African American	American Indian or Alaska Native	Asian or Pacific Islander
2000	48.1	25.1	84.0	64.2	52.1	21.4
2005	39.1	14.9	72.9	51.6	55.0	16.2
% change from 2000	-18.7	-40.6	-13.2	-19.6	5.6	-24.3

1-4 PREGNANCIES AMONG FEMALES 18-19 YEARS OLD

2005



2000



COMPARATIVE RATES FOR 2000 AND 2005

Rate per 1,000 females by race/ethnicity						
Year	All groups	White non-Hispanic	Hispanic or Latino	Black or African American	American Indian or Alaska Native	Asian or Pacific Islander
2000	123.6	85.0	178.4	171.7	144.4	62.4
2005	103.6	55.1	168.9	144.8	137.0	47.6
% change from 2000	-16.2	-35.2	-5.3	-15.7	-5.1	-23.7