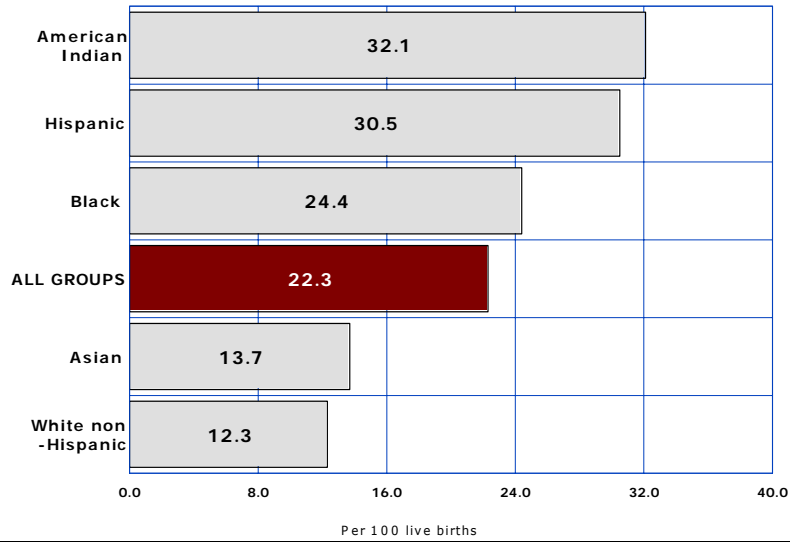


3 Utilization of Prenatal Care Services

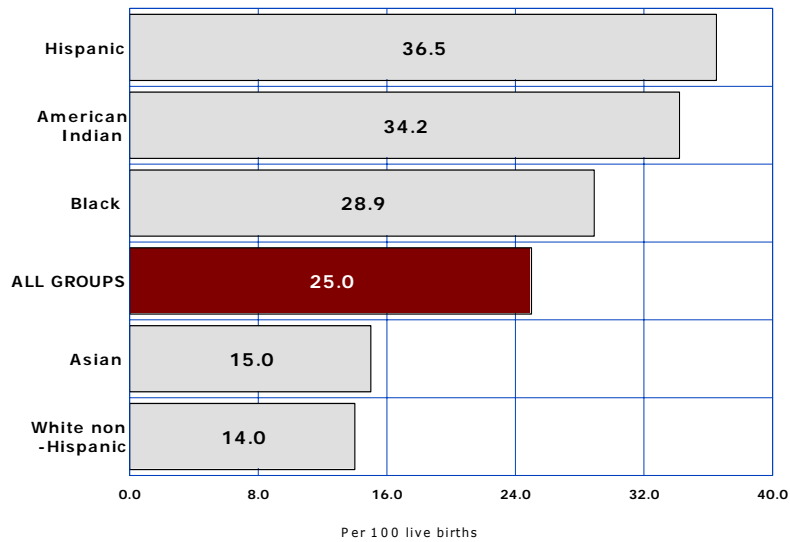
- 3-1 No Care in the 1st Trimester
- 3-2 Fewer Than Five Prenatal Visits
- 3-3 No Prenatal Care

3-1 NO CARE IN THE 1ST TRIMESTER

2005



2000

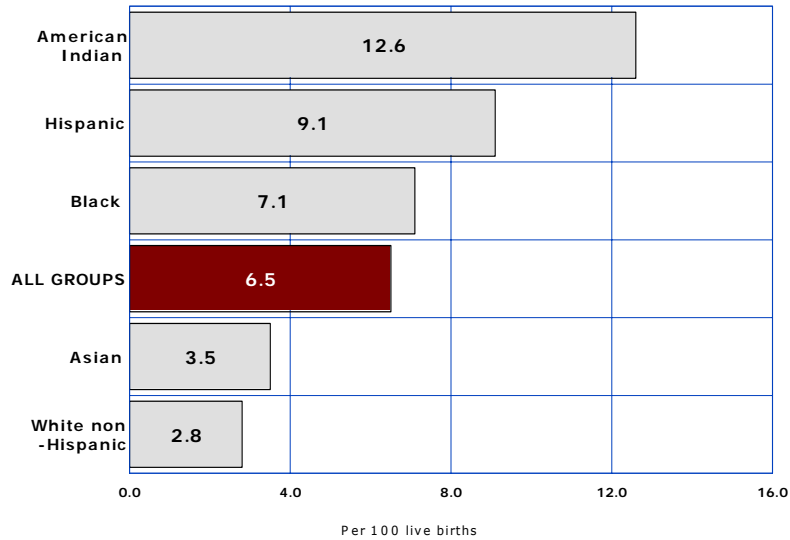


COMPARATIVE RATES FOR 2000 AND 2005

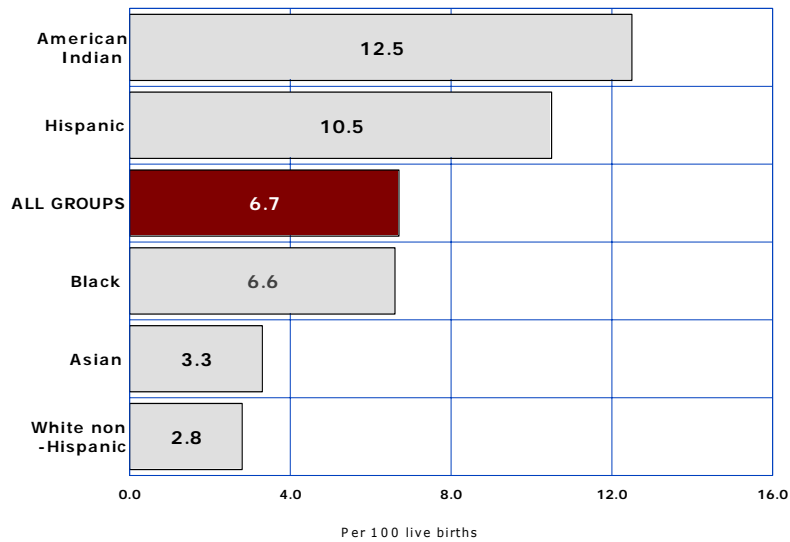
Per 100 births by race/ethnicity						
Year	All groups	White non-Hispanic	Hispanic or Latino	Black or African American	American Indian or Alaska Native	Asian or Pacific Islander
2000	25.0	14.0	36.5	28.9	34.2	15.0
2005	22.3	12.3	30.5	24.4	32.1	13.7
% change from 2000	-10.8	-12.1	-16.4	-15.6	-6.1	-8.7

3-2 FEWER THAN 5 PRENATAL VISITS

2005



2000

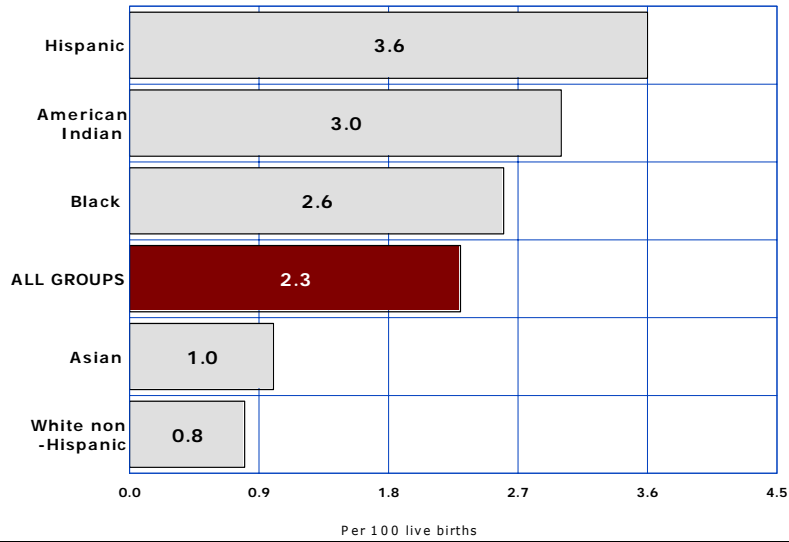


COMPARATIVE RATES FOR 2000 AND 2005

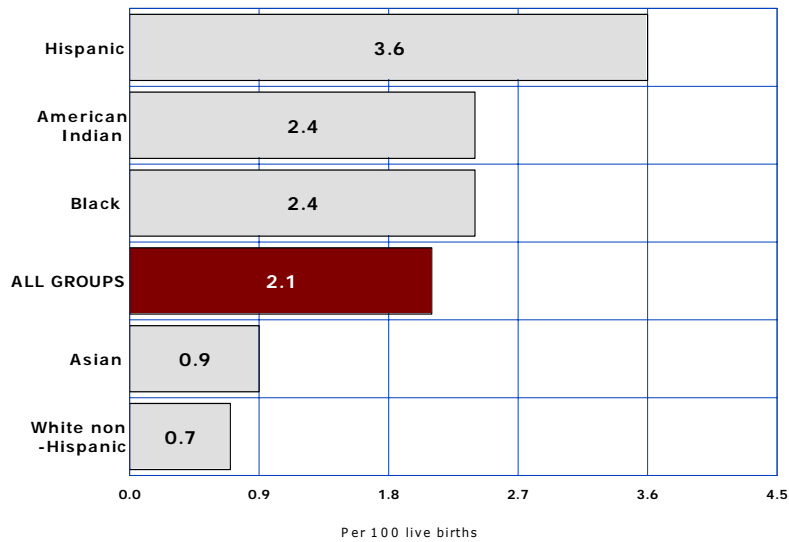
Per 100 births by race/ethnicity						
Year	All groups	White non-Hispanic	Hispanic or Latino	Black or African American	American Indian or Alaska Native	Asian or Pacific Islander
2000	6.7	2.8	10.5	6.6	12.5	3.3
2005	6.5	2.8	9.1	7.1	12.6	3.5
% change from 2000	-3.0	0.0	-13.3	7.6	0.8	6.1

3-3 NO PRENATAL CARE

2005



2000



COMPARATIVE RATES FOR 2000 AND 2005

Per 100 births by race/ethnicity						
Year	All groups	White non-Hispanic	Hispanic or Latino	Black or African American	American Indian or Alaska Native	Asian or Pacific Islander
2000	2.1	0.7	3.6	2.4	2.4	0.9
2005	2.3	0.8	3.6	2.6	3.0	1.0
% change from 2000	9.5	14.3	0.0	8.3	25.0	11.1