

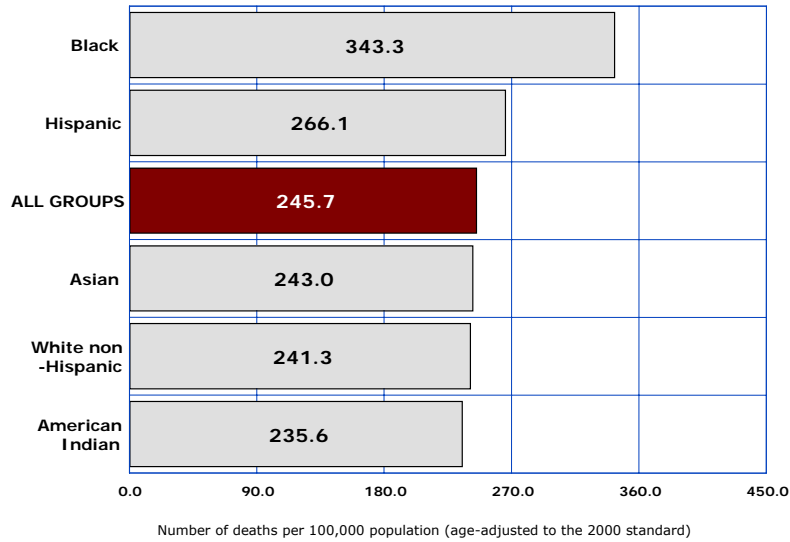
5

Mortality from Natural Causes

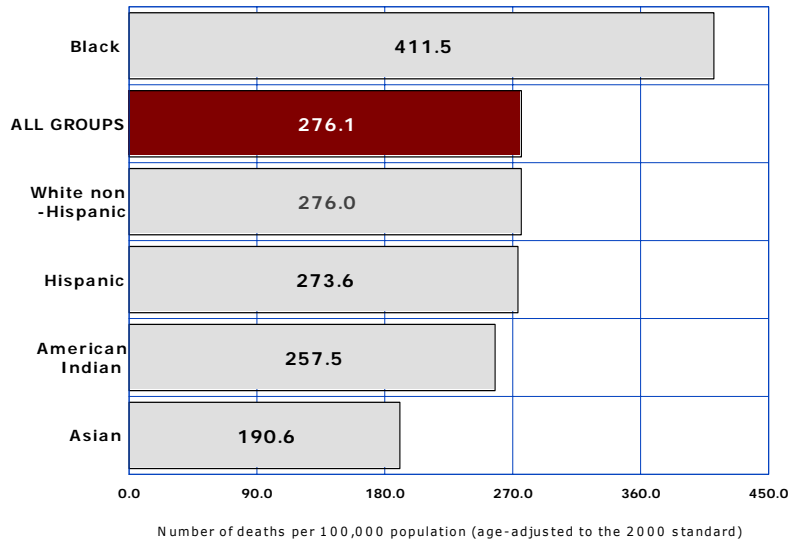
- 5-1 Cardiovascular Disease
- 5-2 Diseases of the Heart
- 5-3 Coronary Heart Disease
- 5-4 Cerebrovascular Disease
- 5-5 Chronic Lower Respiratory Disease
- 5-6 Malignant Neoplasms
- 5-7 Lung Cancer
- 5-8 Breast Cancer
- 5-9 Cervical Cancer
- 5-10 Colorectal Cancer
- 5-11 Prostate Cancer
- 5-12 Influenza and Pneumonia
- 5-13 Diabetes
- 5-14 Chronic Liver Disease and Cirrhosis
- 5-15 HIV Disease
- 5-16 Septicemia
- 5-17 Alzheimer's Disease
- 5-18 Nephritis, Nephrotic Syndrome & Nephrosis
(kidney disease)
- 5-19 Essential (primary) Hypertension
- 5-20 Mortality from All Causes

5-1 CARDIOVASCULAR DISEASE

2005



2000



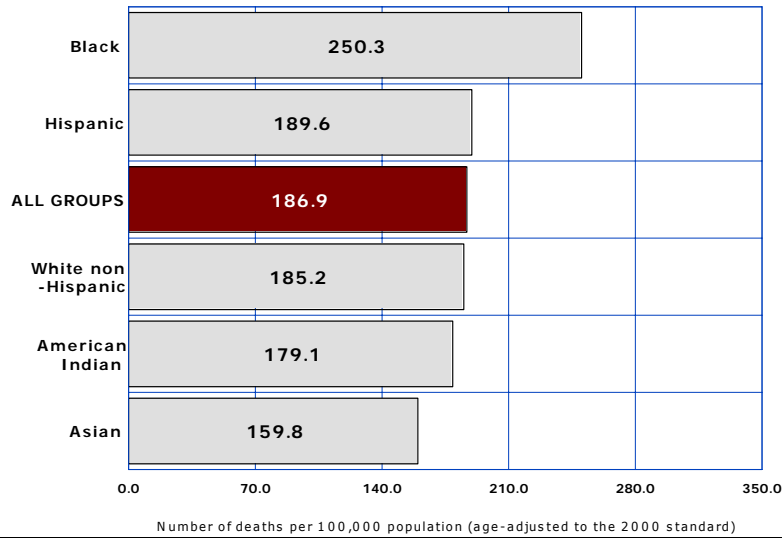
COMPARATIVE RATES FOR 2000 AND 2005

Number of deaths per 100,000 population by race/ethnicity

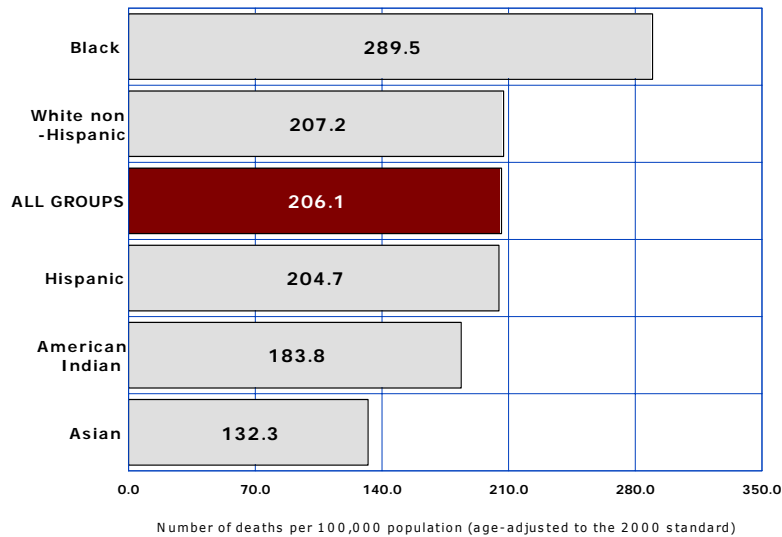
| Year | All groups | White non-Hispanic | Hispanic or Latino | Black or African American | American Indian or Alaska Native | Asian or Pacific Islander |
|--------------------|------------|--------------------|--------------------|---------------------------|----------------------------------|---------------------------|
| 2000 | 276.1 | 276.0 | 273.6 | 411.5 | 257.5 | 190.6 |
| 2005 | 245.7 | 241.3 | 266.1 | 343.3 | 235.6 | 243.0 |
| % change from 2000 | -11.0 | -12.6 | -2.7 | -16.6 | -8.5 | 27.5 |

5-2 DISEASES OF THE HEART

2005



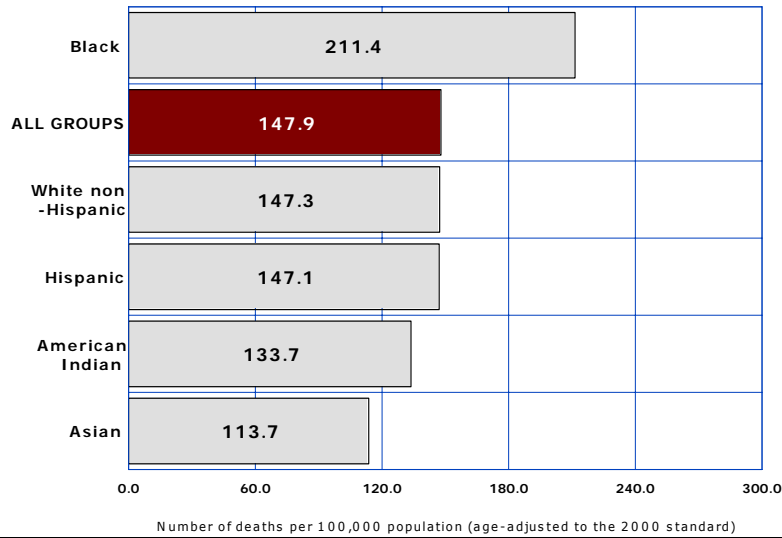
2000



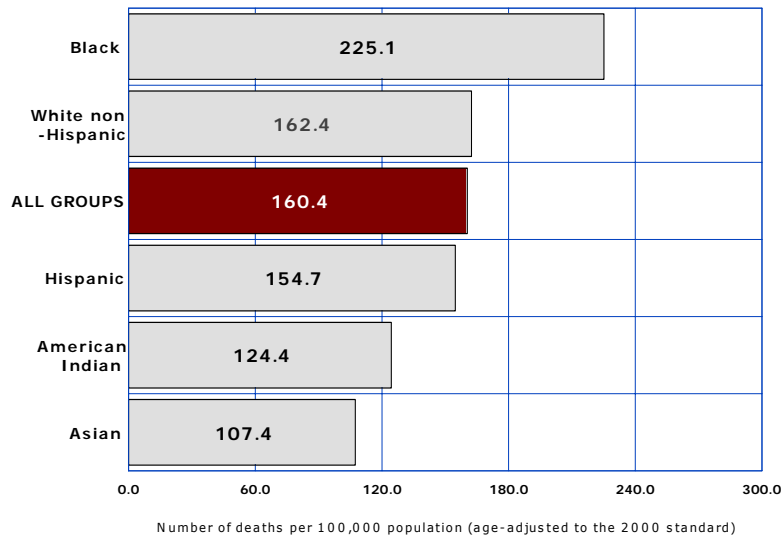
| COMPARATIVE RATES FOR 2000 AND 2005 | | | | | | |
|---|------------|--------------------|--------------------|---------------------------|----------------------------------|---------------------------|
| Number of deaths per 100,000 population by race/ethnicity | | | | | | |
| Year | All groups | White non-Hispanic | Hispanic or Latino | Black or African American | American Indian or Alaska Native | Asian or Pacific Islander |
| 2000 | 206.1 | 207.2 | 204.7 | 289.5 | 183.8 | 132.3 |
| 2005 | 186.9 | 185.2 | 189.6 | 250.3 | 179.1 | 159.8 |
| % change from 2000 | -9.3 | -10.6 | -7.4 | -13.5 | -2.6 | 20.8 |

5-3 CORONARY HEART DISEASE

2005



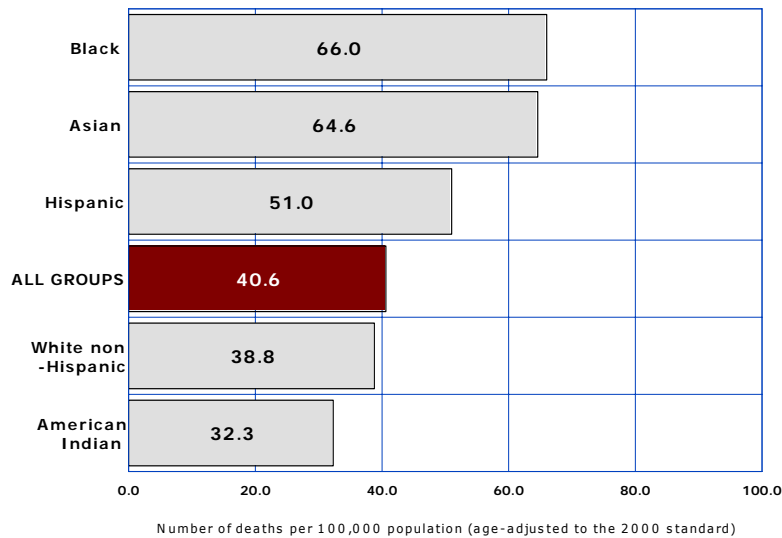
2000



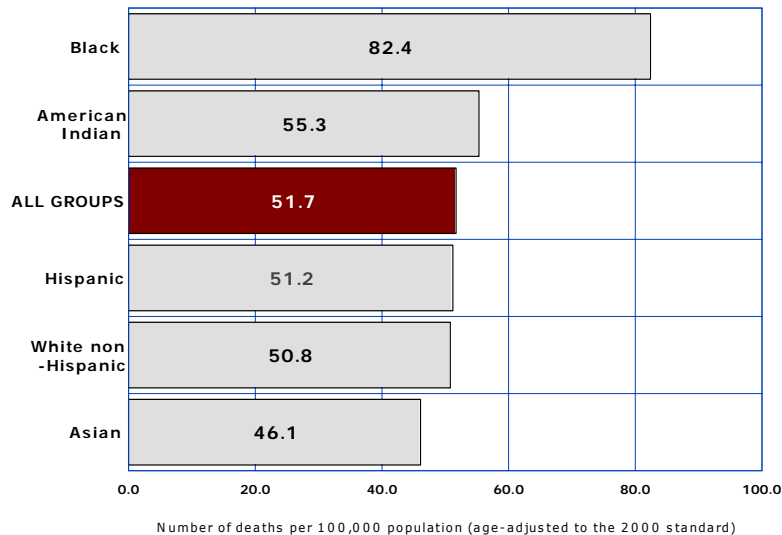
| COMPARATIVE RATES FOR 2000 AND 2005 | | | | | | |
|---|------------|--------------------|--------------------|---------------------------|----------------------------------|---------------------------|
| Number of deaths per 100,000 population by race/ethnicity | | | | | | |
| Year | All groups | White non-Hispanic | Hispanic or Latino | Black or African American | American Indian or Alaska Native | Asian or Pacific Islander |
| 2000 | 160.4 | 162.4 | 154.7 | 225.1 | 124.4 | 107.4 |
| 2005 | 147.9 | 147.3 | 147.1 | 211.4 | 133.7 | 113.7 |
| % change from 2000 | -7.8 | -9.3 | -4.9 | -6.1 | 7.5 | 5.9 |

5-4 CEREBROVASCULAR DISEASE

2005



2000



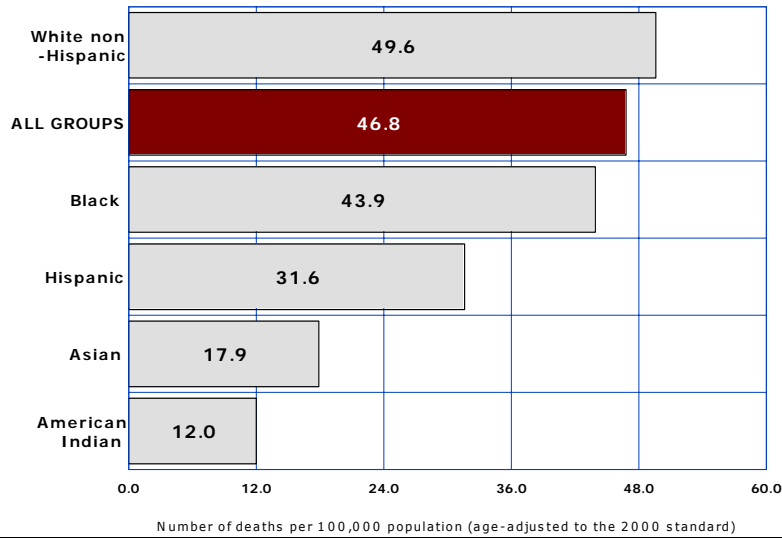
COMPARATIVE RATES FOR 2000 AND 2005

Number of deaths per 100,000 population by race/ethnicity

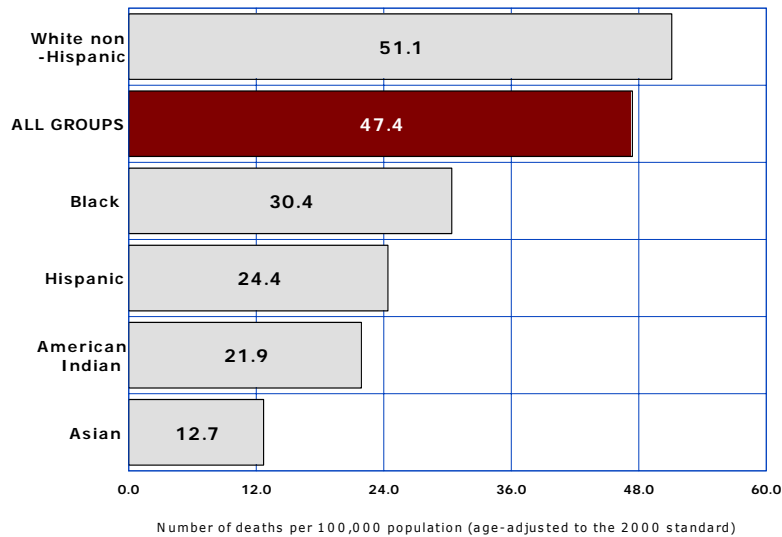
| Year | All groups | White non-Hispanic | Hispanic or Latino | Black or African American | American Indian or Alaska Native | Asian or Pacific Islander |
|--------------------|------------|--------------------|--------------------|---------------------------|----------------------------------|---------------------------|
| 2000 | 51.7 | 50.8 | 51.2 | 82.4 | 55.3 | 46.1 |
| 2005 | 40.6 | 38.8 | 51.0 | 66.0 | 32.3 | 64.6 |
| % change from 2000 | -21.5 | -23.6 | -0.4 | -19.9 | -41.6 | 40.1 |

5-5 CHRONIC LOWER RESPIRATORY DISEASE

2005



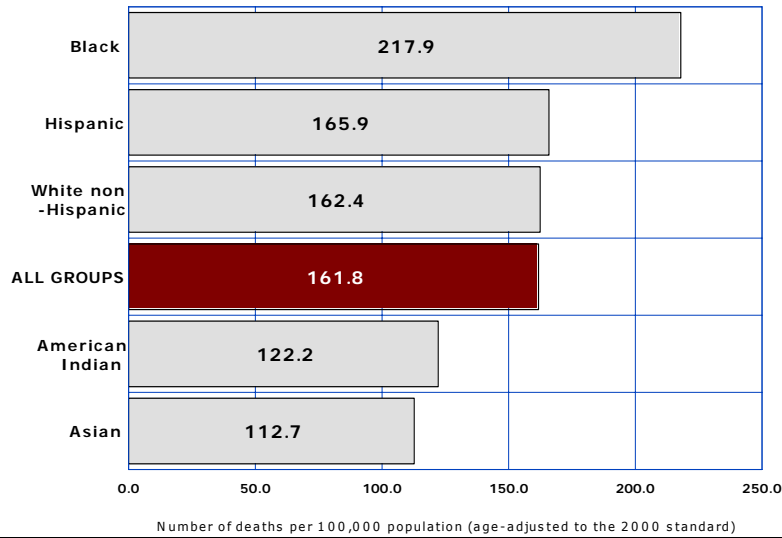
2000



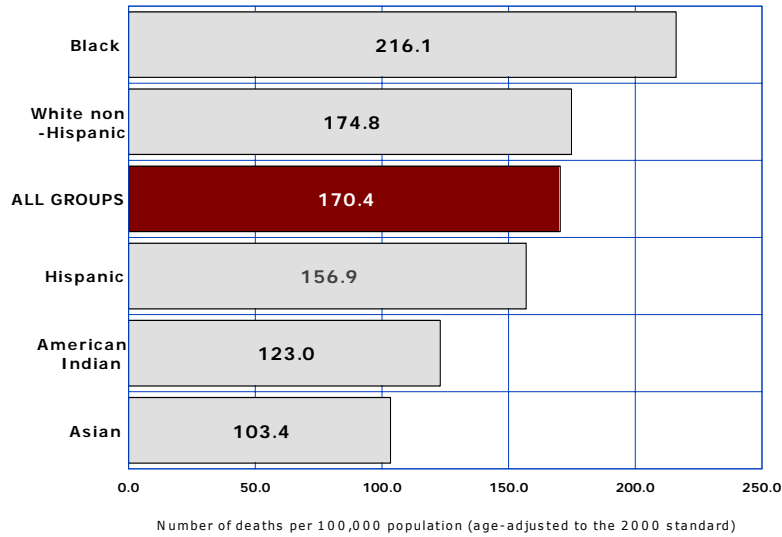
| COMPARATIVE RATES FOR 2000 AND 2005 | | | | | | |
|---|------------|--------------------|--------------------|---------------------------|----------------------------------|---------------------------|
| Number of deaths per 100,000 population by race/ethnicity | | | | | | |
| Year | All groups | White non-Hispanic | Hispanic or Latino | Black or African American | American Indian or Alaska Native | Asian or Pacific Islander |
| 2000 | 47.4 | 51.1 | 24.4 | 30.4 | 21.9 | 12.7 |
| 2005 | 46.8 | 49.6 | 31.6 | 43.9 | 12.0 | 17.9 |
| % change from 2000 | -1.3 | -2.9 | 29.5 | 44.4 | -45.2 | 40.9 |

5-6 MALIGNANT NEOPLASM (CANCER)

2005



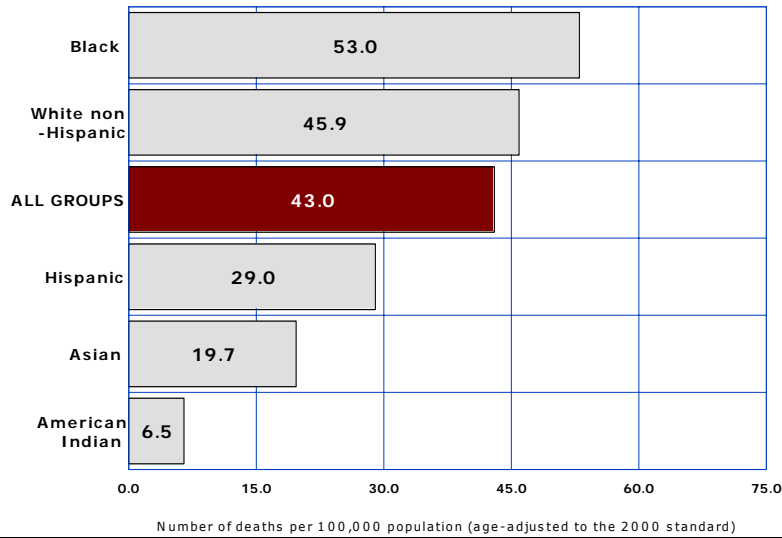
2000



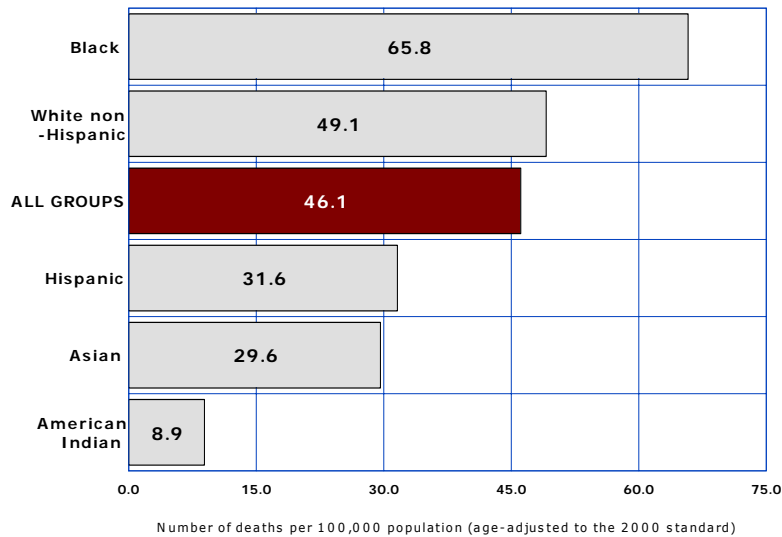
| COMPARATIVE RATES FOR 2000 AND 2005 | | | | | | |
|---|------------|--------------------|--------------------|---------------------------|----------------------------------|---------------------------|
| Number of deaths per 100,000 population by race/ethnicity | | | | | | |
| Year | All groups | White non-Hispanic | Hispanic or Latino | Black or African American | American Indian or Alaska Native | Asian or Pacific Islander |
| 2000 | 170.4 | 174.8 | 156.9 | 216.1 | 123.0 | 103.4 |
| 2005 | 161.8 | 162.4 | 165.9 | 217.9 | 122.2 | 112.7 |
| % change from 2000 | -5.0 | -7.1 | 5.7 | 0.8 | -0.8 | 9.0 |

5-7 LUNG CANCER

2005



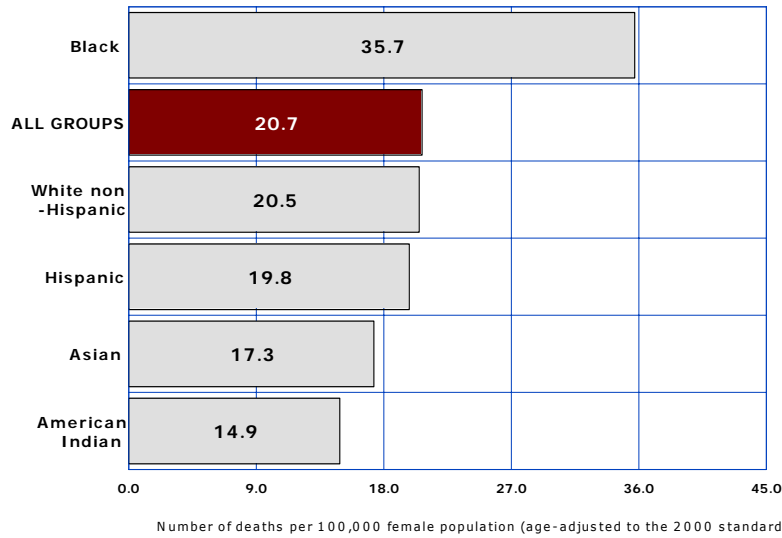
2000



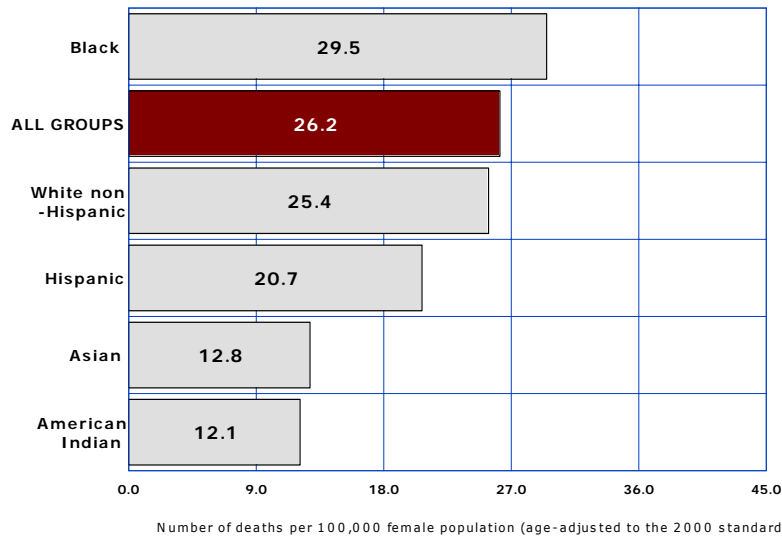
| COMPARATIVE RATES FOR 2000 AND 2005 | | | | | | |
|---|------------|--------------------|--------------------|---------------------------|----------------------------------|---------------------------|
| Number of deaths per 100,000 population by race/ethnicity | | | | | | |
| Year | All groups | White non-Hispanic | Hispanic or Latino | Black or African American | American Indian or Alaska Native | Asian or Pacific Islander |
| 2000 | 46.1 | 49.1 | 31.6 | 65.8 | 8.9 | 29.6 |
| 2005 | 43.0 | 45.9 | 29.0 | 53.0 | 6.5 | 19.7 |
| % change from 2000 | -6.7 | -6.5 | -8.2 | -19.5 | -27.0 | -33.4 |

5-8 BREAST CANCER

2005



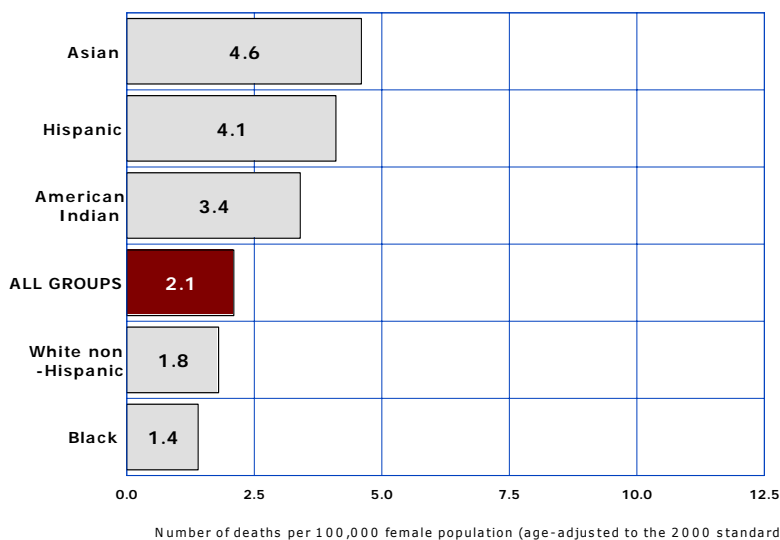
2000



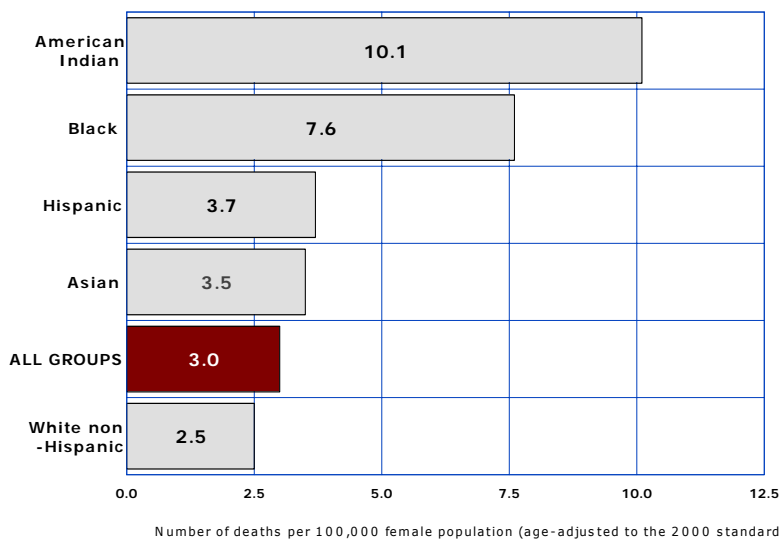
| COMPARATIVE RATES FOR 2000 AND 2005 | | | | | | |
|--|------------|--------------------|--------------------|---------------------------|----------------------------------|---------------------------|
| Number of deaths per 100,000 females by race/ethnicity | | | | | | |
| Year | All groups | White non-Hispanic | Hispanic or Latino | Black or African American | American Indian or Alaska Native | Asian or Pacific Islander |
| 2000 | 25.4 | 26.2 | 20.7 | 29.5 | 12.1 | 12.8 |
| 2005 | 20.7 | 20.5 | 19.8 | 35.7 | 14.9 | 17.3 |
| % change from 2000 | -18.5 | -21.8 | -4.3 | 21.0 | 23.1 | 35.2 |

5-9 CERVICAL CANCER

2005



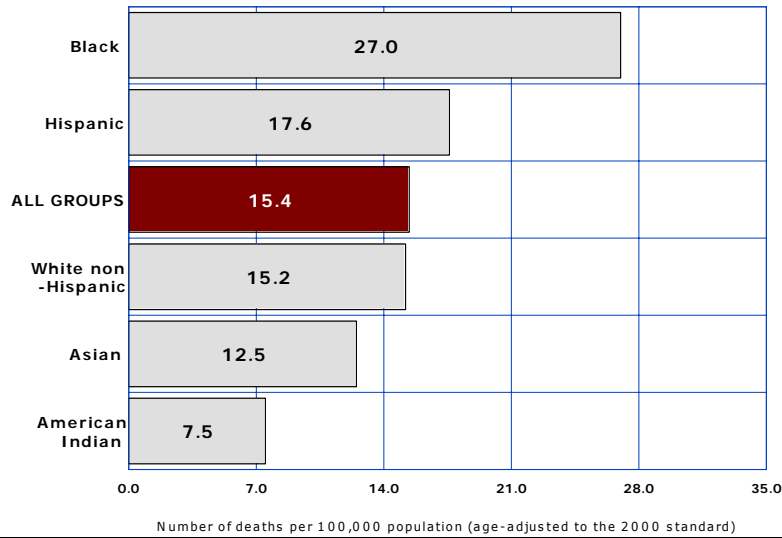
2000



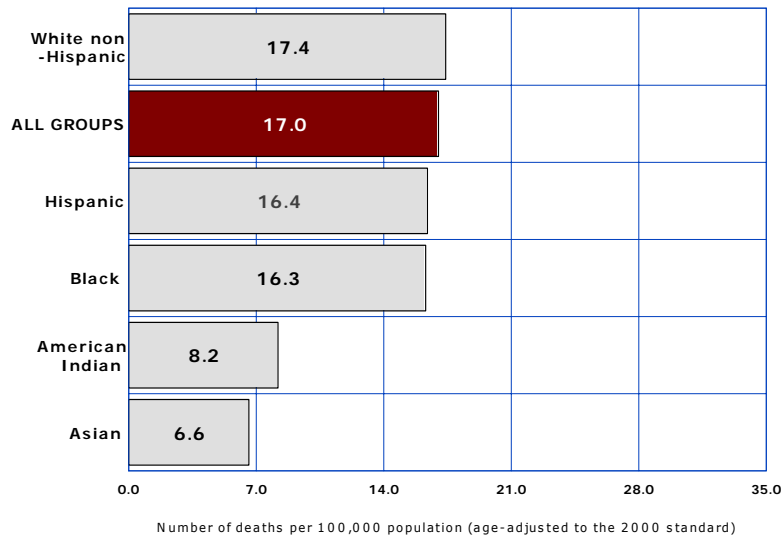
| COMPARATIVE RATES FOR 2000 AND 2005 | | | | | | |
|--|------------|--------------------|--------------------|---------------------------|----------------------------------|---------------------------|
| Number of deaths per 100,000 females by race/ethnicity | | | | | | |
| Year | All groups | White non-Hispanic | Hispanic or Latino | Black or African American | American Indian or Alaska Native | Asian or Pacific Islander |
| 2000 | 3.0 | 2.5 | 3.7 | 7.6 | 10.1 | 3.5 |
| 2005 | 2.1 | 1.8 | 4.1 | 1.4 | 3.4 | 4.6 |
| % change from 2000 | -30.0 | -28.0 | 10.8 | -81.6 | -66.3 | 31.4 |

5-10 COLORECTAL CANCER

2005



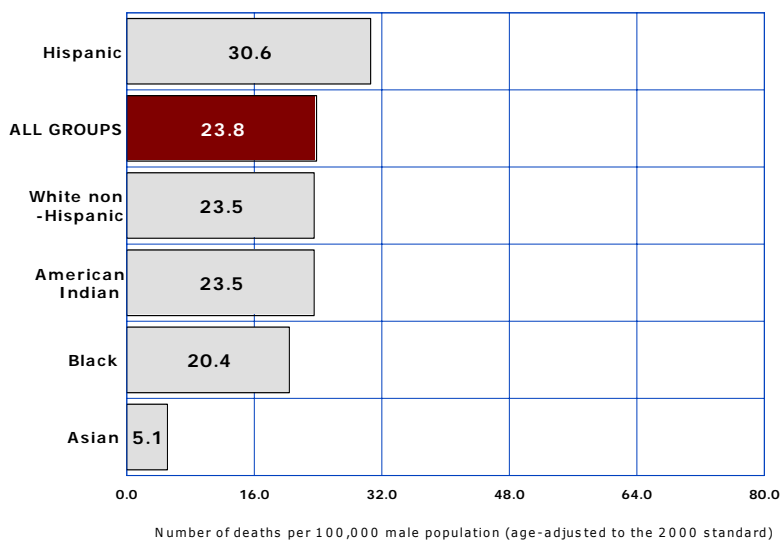
2000



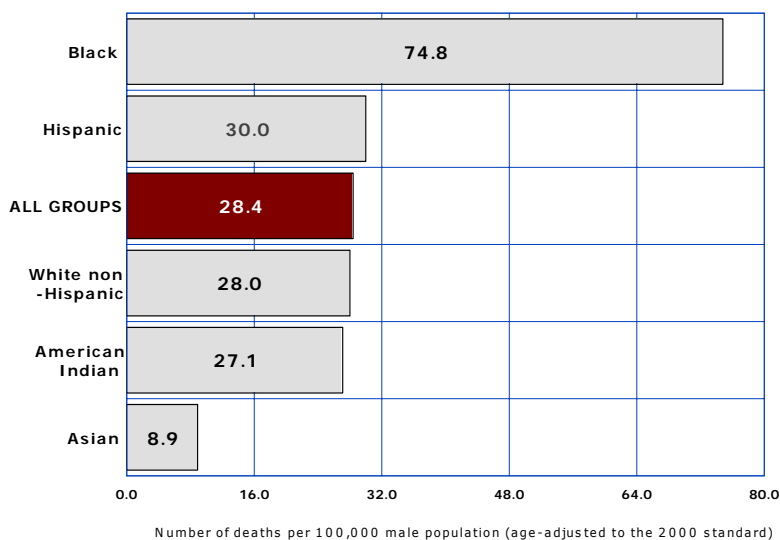
| COMPARATIVE RATES FOR 2000 AND 2005 | | | | | | |
|---|------------|--------------------|--------------------|---------------------------|----------------------------------|---------------------------|
| Number of deaths per 100,000 population by race/ethnicity | | | | | | |
| Year | All groups | White non-Hispanic | Hispanic or Latino | Black or African American | American Indian or Alaska Native | Asian or Pacific Islander |
| 2000 | 17.0 | 17.4 | 16.4 | 16.3 | 8.2 | 6.6 |
| 2005 | 15.4 | 15.2 | 17.6 | 27.0 | 7.5 | 12.5 |
| % change from 2000 | -9.4 | -12.6 | 7.3 | 65.6 | -8.5 | 89.4 |

5-11 PROSTATE CANCER

2005



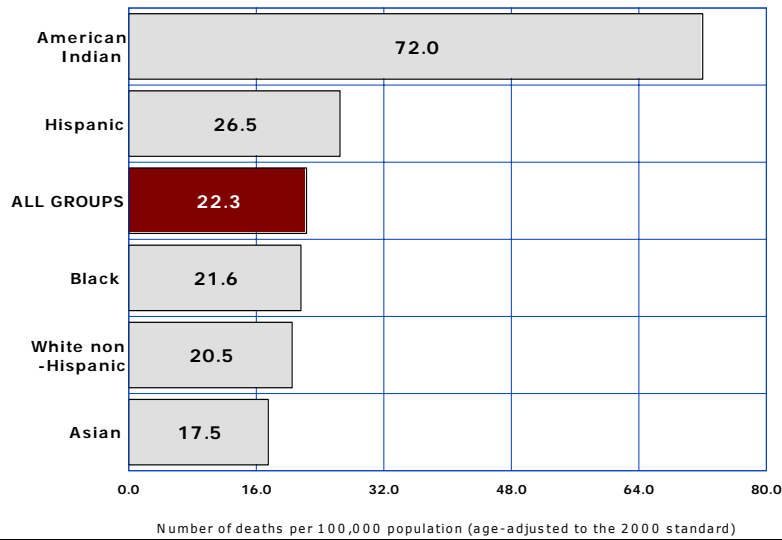
2000



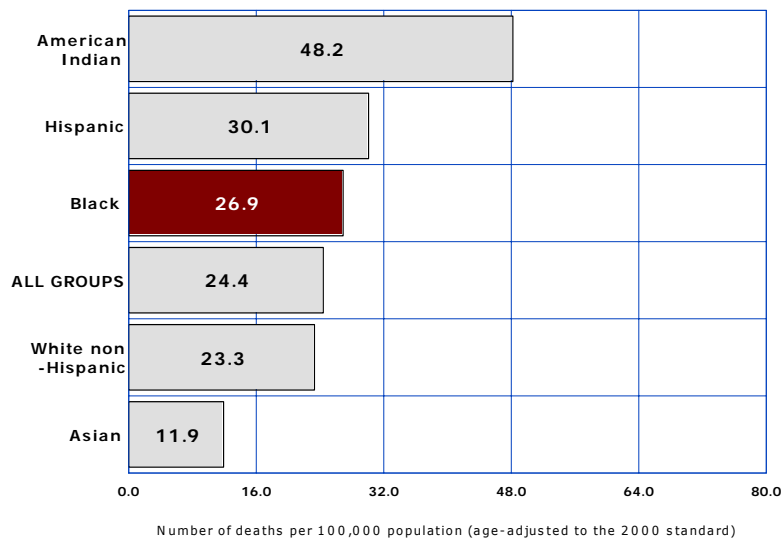
| COMPARATIVE RATES FOR 2000 AND 2005 | | | | | | |
|--|------------|--------------------|--------------------|---------------------------|----------------------------------|---------------------------|
| Number of deaths per 100,000 males by race/ethnicity | | | | | | |
| Year | All groups | White non-Hispanic | Hispanic or Latino | Black or African American | American Indian or Alaska Native | Asian or Pacific Islander |
| 2000 | 28.4 | 28.0 | 30.0 | 74.8 | 27.1 | 8.9 |
| 2005 | 23.8 | 23.5 | 30.6 | 20.4 | 23.5 | 5.1 |
| % change from 2000 | -16.2 | -16.1 | 2.0 | -72.7 | -13.3 | -42.7 |

5-12 INFLUENZA AND PNEUMONIA

2005



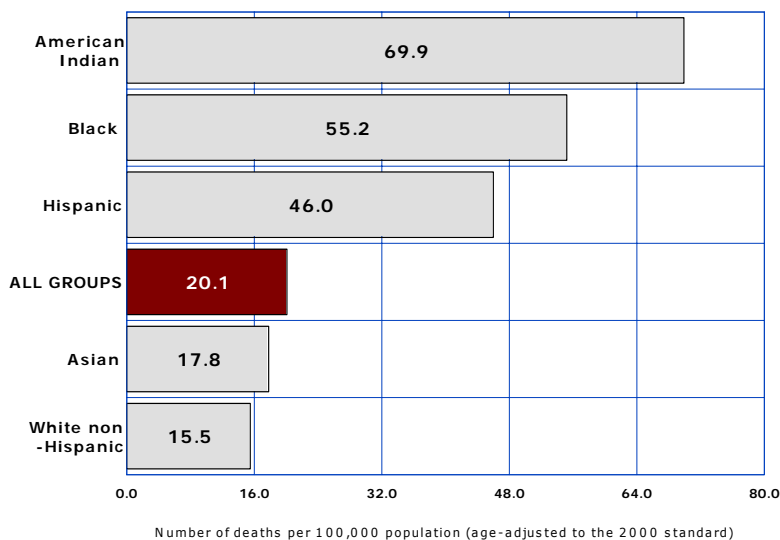
2000



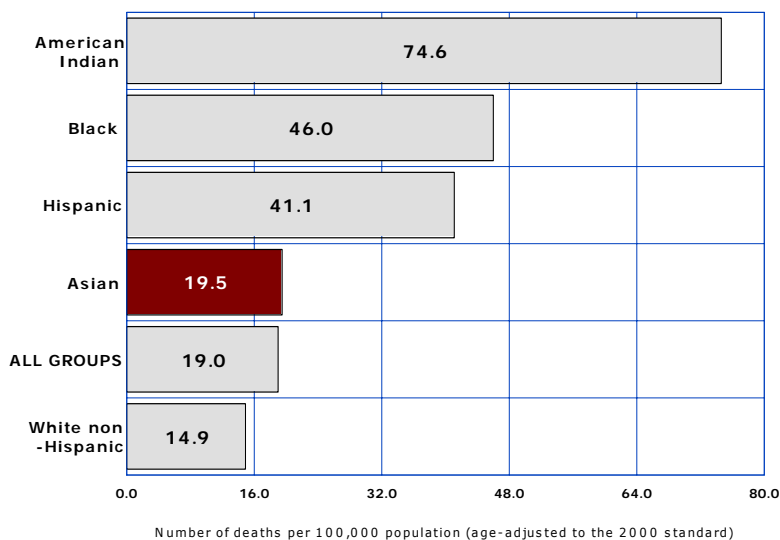
| COMPARATIVE RATES FOR 2000 AND 2005 | | | | | | |
|---|------------|--------------------|--------------------|---------------------------|----------------------------------|---------------------------|
| Number of deaths per 100,000 population by race/ethnicity | | | | | | |
| Year | All groups | White non-Hispanic | Hispanic or Latino | Black or African American | American Indian or Alaska Native | Asian or Pacific Islander |
| 2000 | 24.4 | 23.3 | 30.1 | 26.9 | 48.2 | 11.9 |
| 2005 | 22.3 | 20.5 | 26.5 | 21.6 | 72.0 | 17.5 |
| % change from 2000 | -8.6 | -12.0 | -12.0 | -19.7 | 49.4 | 47.1 |

5-13 DIABETES

2005



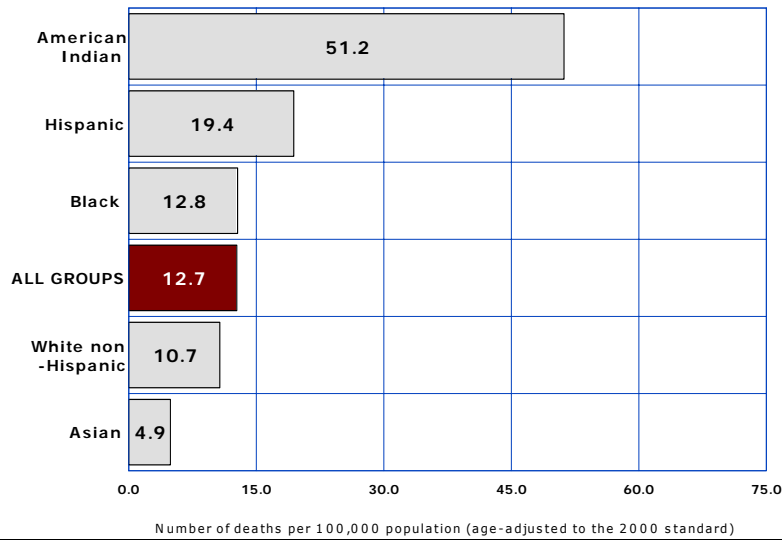
2000



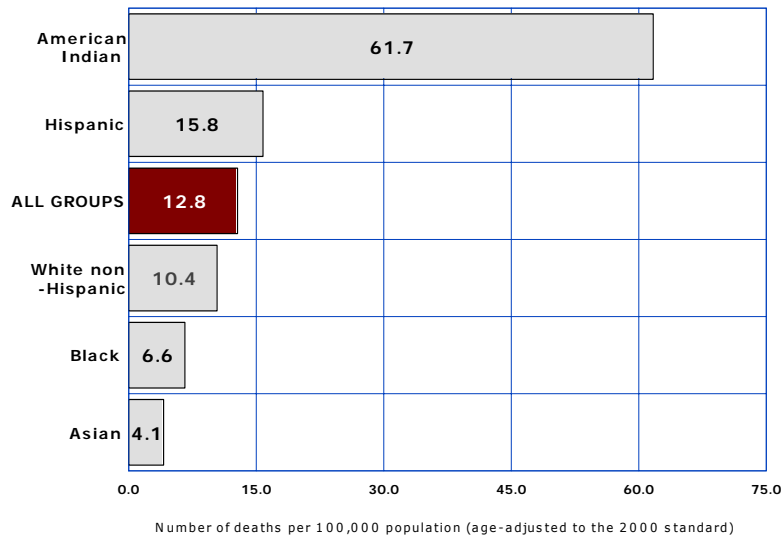
| COMPARATIVE RATES FOR 2000 AND 2005 | | | | | | |
|---|------------|--------------------|--------------------|---------------------------|----------------------------------|---------------------------|
| Number of deaths per 100,000 population by race/ethnicity | | | | | | |
| Year | All groups | White non-Hispanic | Hispanic or Latino | Black or African American | American Indian or Alaska Native | Asian or Pacific Islander |
| 2000 | 19.0 | 14.9 | 41.1 | 46.0 | 74.6 | 19.5 |
| 2005 | 20.1 | 15.5 | 46.0 | 55.2 | 69.9 | 17.8 |
| % change from 2000 | 5.8 | 4.0 | 11.9 | 20.0 | -6.3 | -8.7 |

5-14 CHRONIC LIVER DISEASE AND CIRRHOSIS

2005



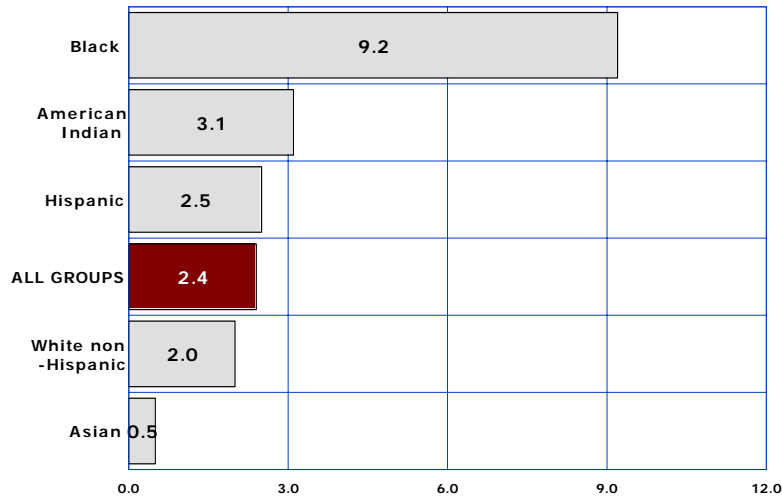
2000



| COMPARATIVE RATES FOR 2000 AND 2005 | | | | | | |
|---|------------|--------------------|--------------------|---------------------------|----------------------------------|---------------------------|
| Number of deaths per 100,000 population by race/ethnicity | | | | | | |
| Year | All groups | White non-Hispanic | Hispanic or Latino | Black or African American | American Indian or Alaska Native | Asian or Pacific Islander |
| 2000 | 12.8 | 10.4 | 15.8 | 6.6 | 61.7 | 4.1 |
| 2005 | 12.7 | 10.7 | 19.4 | 12.8 | 51.2 | 4.9 |
| % change from 2000 | -0.8 | 2.9 | 22.8 | 93.9 | -17.0 | 19.5 |

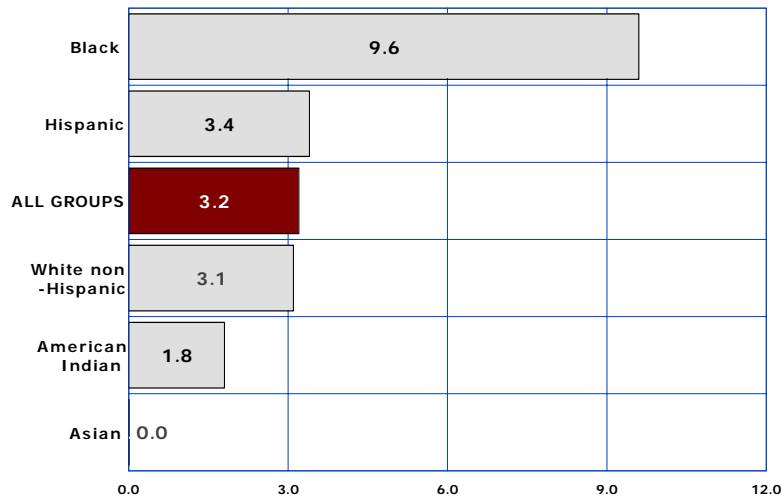
5-15 HIV DISEASE

2005



Number of deaths per 100,000 population (age-adjusted to the 2000 standard)

2000

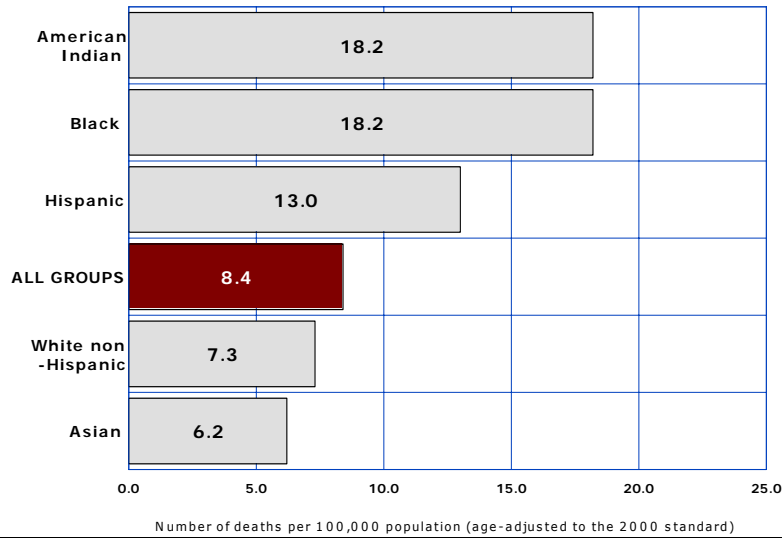


Number of deaths per 100,000 population (age-adjusted to the 2000 standard)

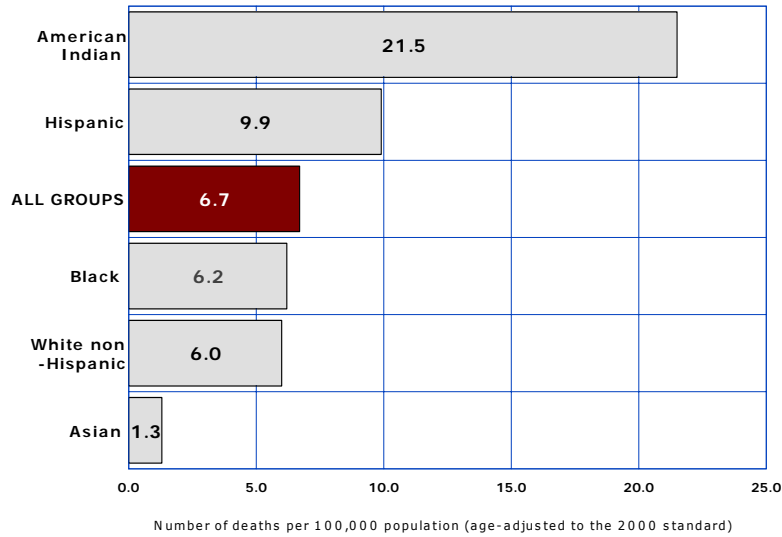
| COMPARATIVE RATES FOR 2000 AND 2005 | | | | | | |
|---|-------------------|---------------------------|---------------------------|----------------------------------|---|----------------------------------|
| Number of deaths per 100,000 population by race/ethnicity | | | | | | |
| Year | All groups | White non-Hispanic | Hispanic or Latino | Black or African American | American Indian or Alaska Native | Asian or Pacific Islander |
| 2000 | 3.2 | 3.1 | 3.4 | 9.6 | 1.8 | 0.0 |
| 2005 | 2.4 | 2.0 | 2.5 | 9.2 | 3.1 | 0.5 |
| % change from 2000 | -25.0 | -35.5 | -26.5 | -4.2 | 72.2 | NA |

5-16 SEPTICEMIA

2005



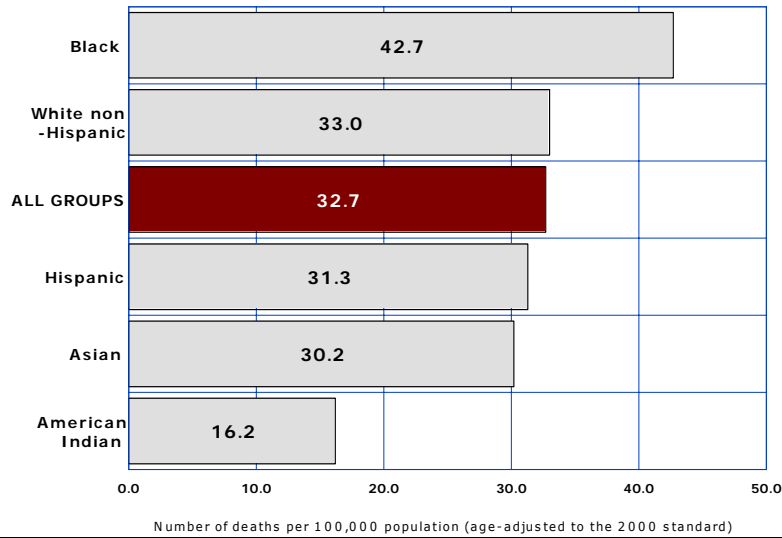
2000



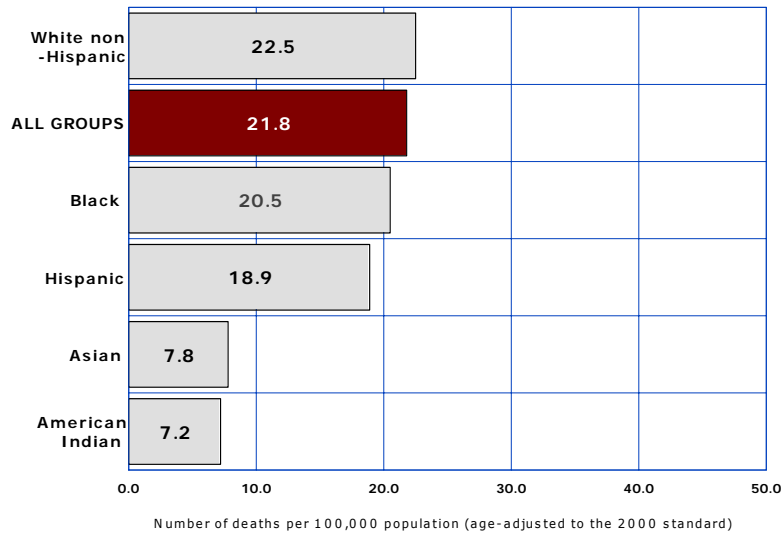
| COMPARATIVE RATES FOR 2000 AND 2005 | | | | | | |
|---|------------|--------------------|--------------------|---------------------------|----------------------------------|---------------------------|
| Number of deaths per 100,000 population by race/ethnicity | | | | | | |
| Year | All groups | White non-Hispanic | Hispanic or Latino | Black or African American | American Indian or Alaska Native | Asian or Pacific Islander |
| 2000 | 6.7 | 6.0 | 9.9 | 6.2 | 21.5 | 1.3 |
| 2005 | 8.4 | 7.3 | 13.0 | 18.2 | 18.2 | 6.2 |
| % change from 2000 | 25.3 | 21.7 | 31.3 | 193.5 | -15.3 | 376.9 |

5-17 ALZHEIMER'S DISEASE

2005



2000



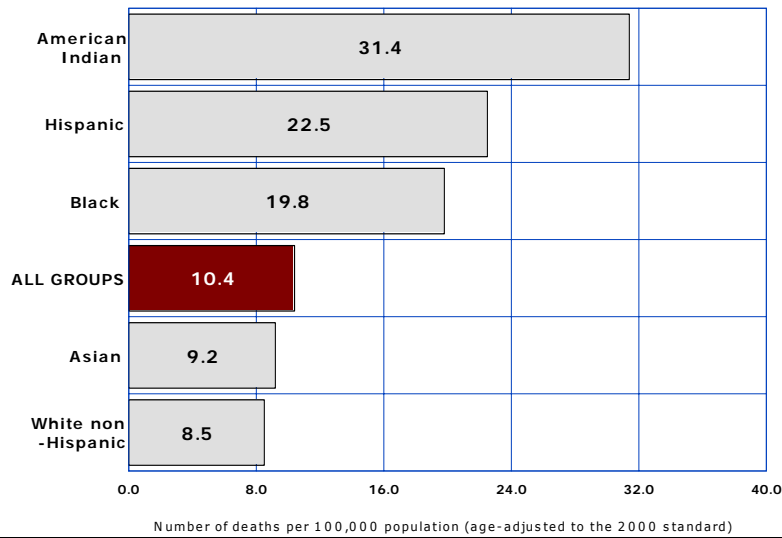
COMPARATIVE RATES FOR 2000 AND 2005

Number of deaths per 100,000 population by race/ethnicity

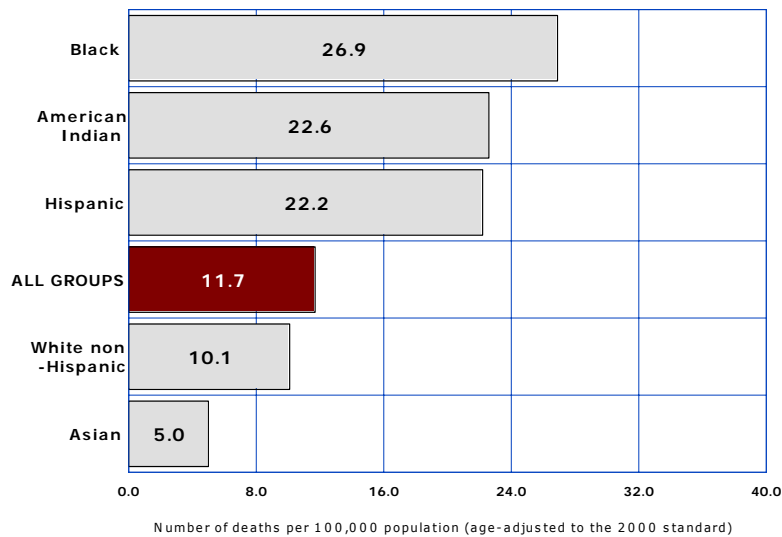
| Year | All groups | White non-Hispanic | Hispanic or Latino | Black or African American | American Indian or Alaska Native | Asian or Pacific Islander |
|--------------------|------------|--------------------|--------------------|---------------------------|----------------------------------|---------------------------|
| 2000 | 21.8 | 22.5 | 18.9 | 20.5 | 7.2 | 7.8 |
| 2005 | 32.7 | 33.0 | 31.3 | 42.7 | 16.2 | 30.2 |
| % change from 2000 | 50.0 | 46.7 | 65.6 | 108.3 | 125.0 | 287.2 |

5-18 NEPHRITIS, NEPHROTIC SYNDROME AND NEPHROSIS

2005



2000



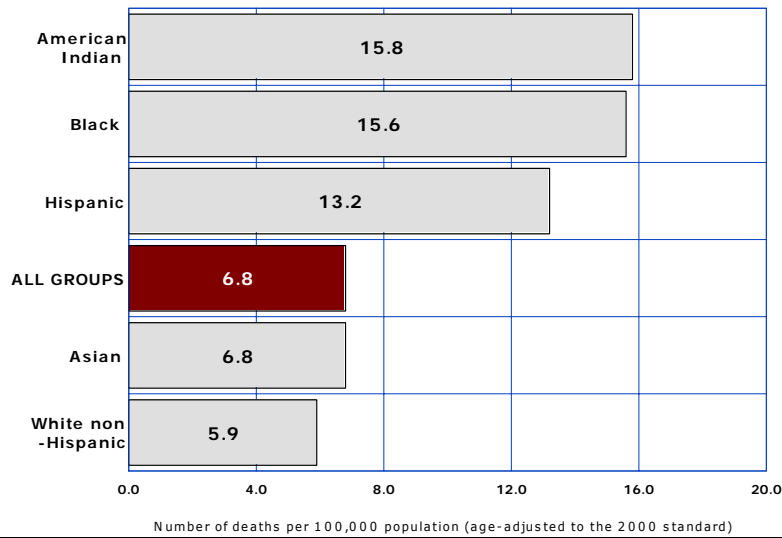
COMPARATIVE RATES FOR 2000 AND 2005

Number of deaths per 100,000 population by race/ethnicity

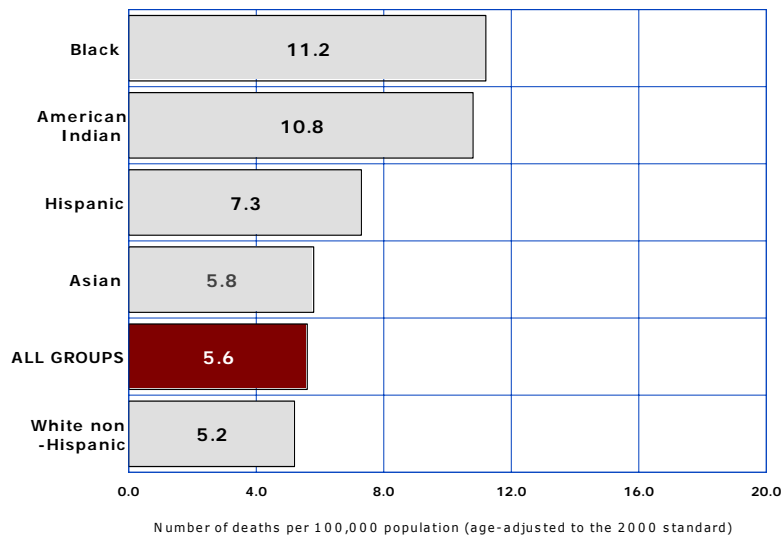
| Year | All groups | White non-Hispanic | Hispanic or Latino | Black or African American | American Indian or Alaska Native | Asian or Pacific Islander |
|--------------------|------------|--------------------|--------------------|---------------------------|----------------------------------|---------------------------|
| 2000 | 11.7 | 10.1 | 22.1 | 26.9 | 22.6 | 5.0 |
| 2005 | 10.4 | 8.5 | 22.5 | 19.8 | 31.4 | 9.2 |
| % change from 2000 | -11.1 | -15.8 | 1.8 | -26.4 | 38.9 | 84.0 |

5-19 ESSENTIAL (PRIMARY) HYPERTENSION

2005



2000



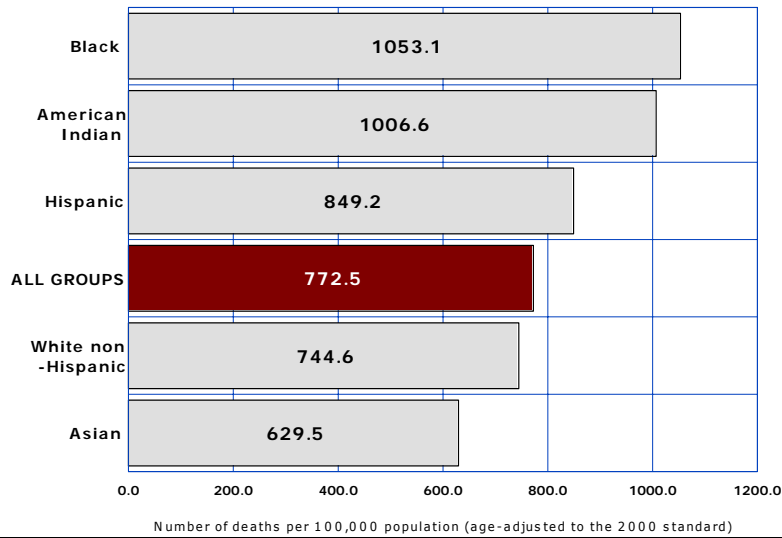
COMPARATIVE RATES FOR 2000 AND 2005

Number of deaths per 100,000 population by race/ethnicity

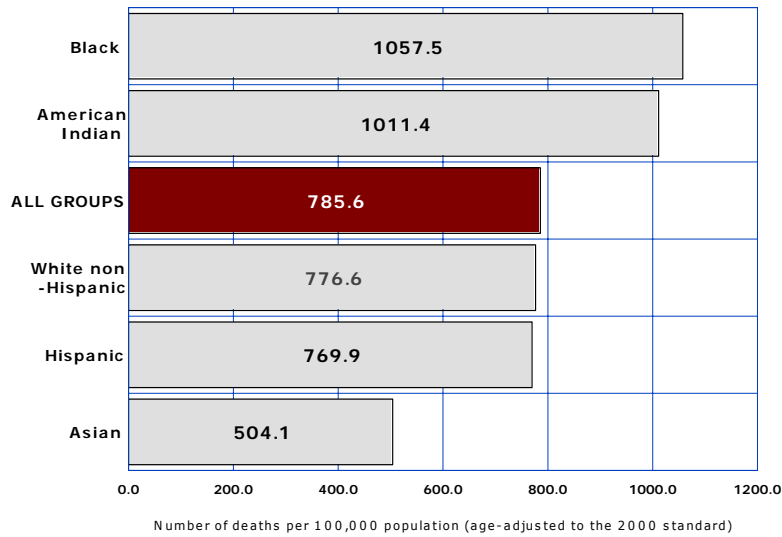
| Year | All groups | White non-Hispanic | Hispanic or Latino | Black or African American | American Indian or Alaska Native | Asian or Pacific Islander |
|--------------------|------------|--------------------|--------------------|---------------------------|----------------------------------|---------------------------|
| 2000 | 5.6 | 5.2 | 7.3 | 11.2 | 10.8 | 5.8 |
| 2005 | 6.8 | 5.9 | 13.2 | 15.6 | 15.8 | 6.8 |
| % change from 2000 | 21.4 | 13.5 | 80.8 | 39.3 | 46.3 | 17.2 |

5-20 TOTAL MORTALITY FROM ALL CAUSES

2005



2000



| COMPARATIVE RATES FOR 2000 AND 2005 | | | | | | |
|---|-------------------|---------------------------|---------------------------|----------------------------------|---|----------------------------------|
| Number of deaths per 100,000 population by race/ethnicity | | | | | | |
| Year | All groups | White non-Hispanic | Hispanic or Latino | Black or African American | American Indian or Alaska Native | Asian or Pacific Islander |
| 2000 | 785.6 | 776.6 | 769.9 | 1057.5 | 1011.4 | 504.1 |
| 2005 | 772.5 | 744.6 | 849.2 | 1053.1 | 1006.6 | 629.5 |
| % change from 2000 | -1.7 | -4.1 | 10.3 | -0.4 | -0.5 | 24.9 |