

1B. NATALITY: MATERNAL CHARACTERISTICS AND NEWBORN'S HEALTH

Unmarried mothers have accounted for an increasing annual proportion of births throughout the 1980s and 1990s, with 45.1 percent in 2013 (**Table 1B-2**). In 2013, 38,352 infants were born to unmarried mothers compared to 37,394 in 2003 (**Table 1B-26**).

A decade ago, the proportion of births among unmarried women aged 20-24 years was 54.0 percent. This proportion has continued to rise from 2003 to 2013. In 2013, nearly 7 out of ten (66.0 percent) mothers 20-24 years old were unmarried (**Figure 1B-7**).

Births and birth ratios by mother's marital status, age group, and race/ethnicity are given in **Table 1B-23**. County-level information is provided in **Table 5B-14** and **5B-15**.

Figure 1B-7
Percent Births to Unmarried Mothers by Age Group, Arizona, 2013

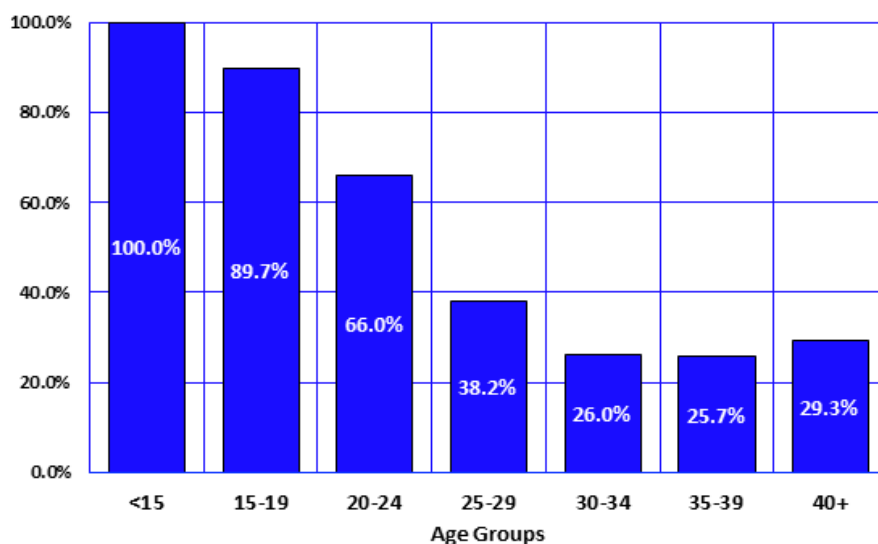
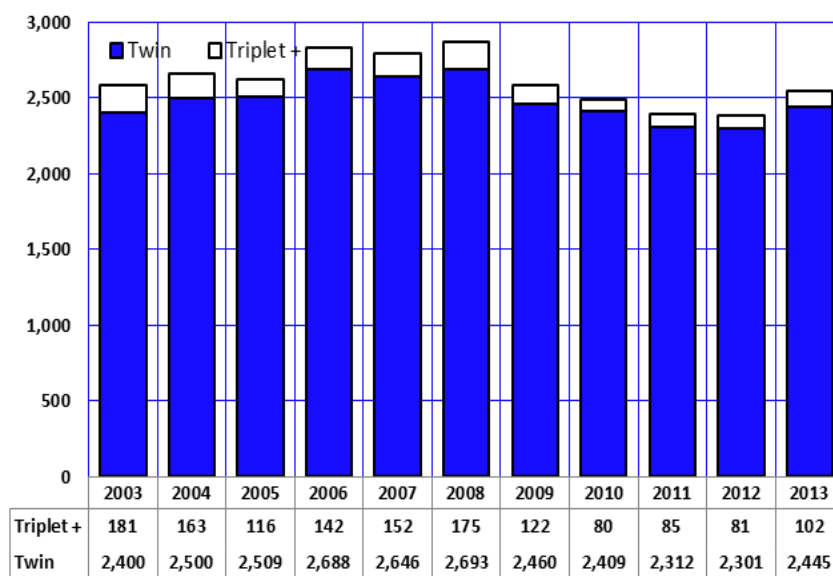


Figure 1B-8
Number of Births in Twin and Triplet+ Deliveries by Year, Arizona, 2003-2013



The number of multiple birth events in Arizona declined from 2,868 in 2008, (the highest number ever recorded) to 2,547 in 2013 (**Figure 1B-8**). The number of babies born in twin deliveries decreased from 2,693 in 2008 to 2,445 in 2013 (**Figure 1B-8**). The number of triplet and higher order multiple birth events decreased by 41.7 percent from 175 in 2008 to 102 in 2013.