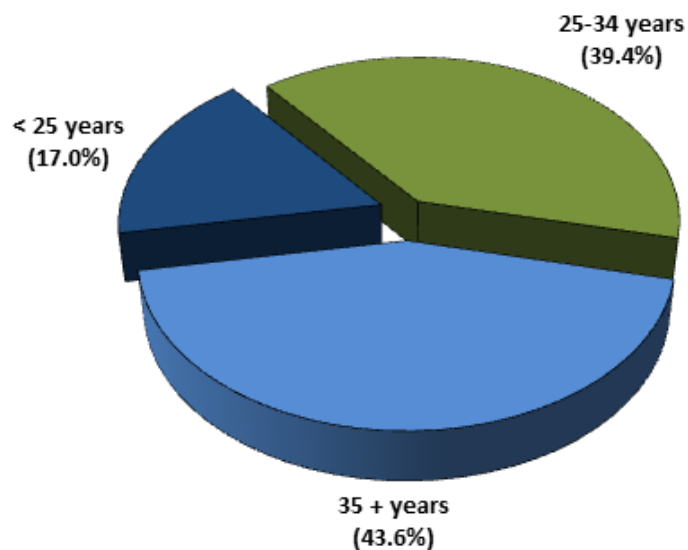


## 1C. FETAL, PERINATAL, AND MATERNAL DEATHS

**Figure 1C-3**  
**Percent of Death from Maternal Causes by Mother's Age Group, Arizona, 2003 - 2013**

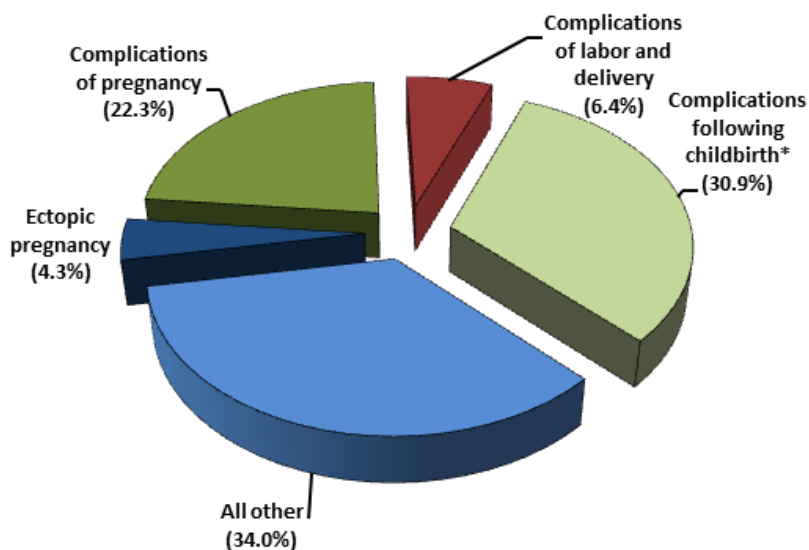
In 2013, 9 women giving birth were reported to have died from maternal causes (**Table 1C-1**). The number of maternal deaths does not include all deaths occurring to pregnant women, but only those deaths assigned to causes related to or aggravated by pregnancy or pregnancy management.

Based on the total number of 94 maternal deaths from 2003 to 2013, women age 35 and greater had the highest proportional contribution to maternal mortality (43.6 percent), followed by women age 25 - 34 (39.4 percent), and women age 24 and younger (17.0 percent; **Figure 1C-3**).



**Figure 1C-4**  
**Causes of Maternal Mortality<sup>a</sup>, Arizona, 2003 - 2013**

In the eleven-year period from 2003 to 2013, the major causes of maternal deaths in the State have included complications following childbirth (i.e. complications of the puerperium; 30.9 percent), complications mainly related to pregnancy (22.3 percent), complications occurring in the course of labor and delivery (6.4 percent), and ectopic pregnancy (4.3 percent). All other possible causes of maternal death accounted for 34.0 percent of the maternal deaths from 2003 to 2013 (**Figure 1C-4**, **Table 1C-2**).



Notes: <sup>a</sup> Based on the total number of maternal deaths from 2003 to 2013; \* Complications of the puerperium.