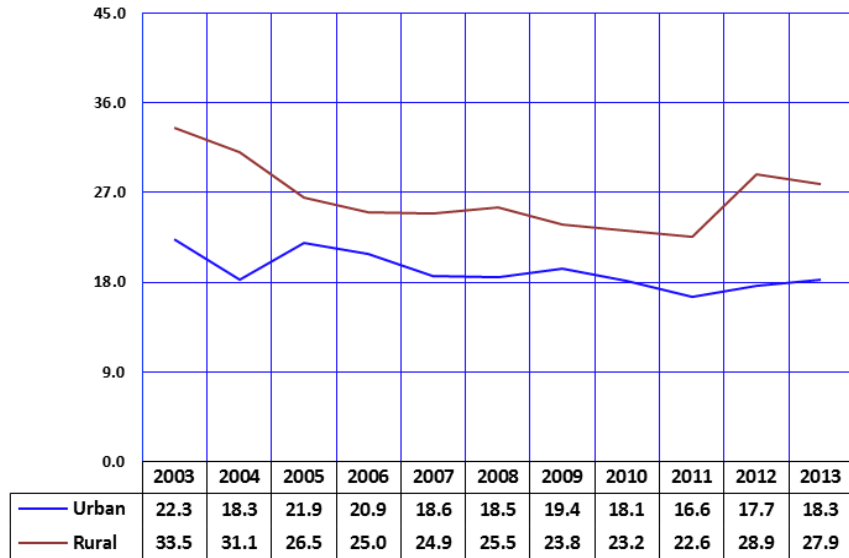


2C.AGE-SPECIFIC MORTALITY

Childhood mortality (ages 1-14 years)

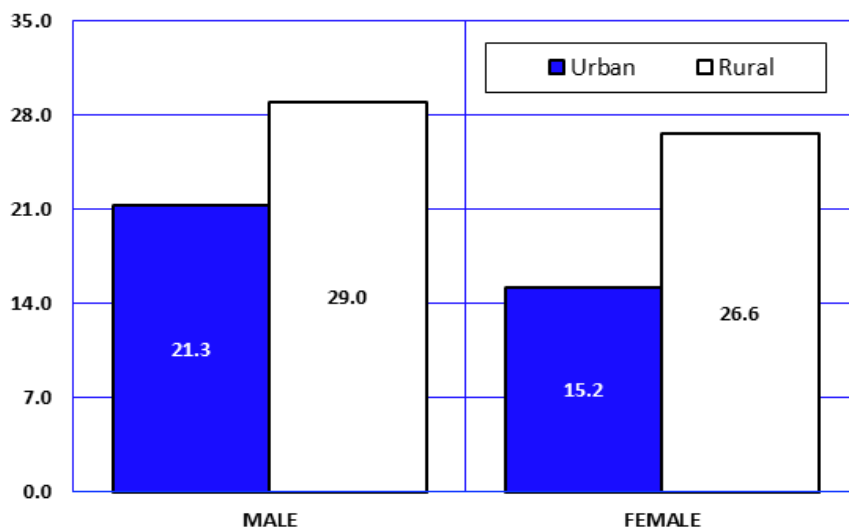
Figure 2C-7
Mortality Rates^a by Urban/Rural Area^b and Year among Children 1-14 Years, Arizona, 2003-2013



Notes: ^a Number of deaths per 100,000 persons, 1-14 years old in specified group; ^b Urban counties are Maricopa, Pima, Pinal, and Yuma Counties, Rural Counties are those remaining.

From 2012 to 2013, overall mortality rates increased for urban children but decreased for rural children (**Figure 2C-7, Table 2C-8**). From 2003 to 2013 the total mortality rates decreased by 17.9 percent for urban children and by 16.7 percent for rural children.

Figure 2C-8
Mortality Rates^a by Gender in Urban/Rural^b Areas among Children 1-14 Years, Arizona, 2013



From 2012 to 2013, the mortality rate for accidents slightly increased for both urban and rural children (**Table 2C-8**). The mortality rate for unintentional injuries among rural children (12.6/100,000) was 2.3 times greater than the rate among urban children (5.5/100,000, **Table 2C-8**). In 2013, 20 children in urban areas died of accidental drowning while no rural children died of this cause (**Table 2C-10**).

Urban females 1-14 years old had the lowest mortality risk among gender by area groups in 2013, followed by urban males, rural females, and rural males.

Notes: ^a Number of deaths per 100,000 persons, 1-14 years old in specified group; ^b Urban counties include Maricopa, Pima, Pinal, and Yuma Counties, Rural Counties are those remaining.