



## **1C.**

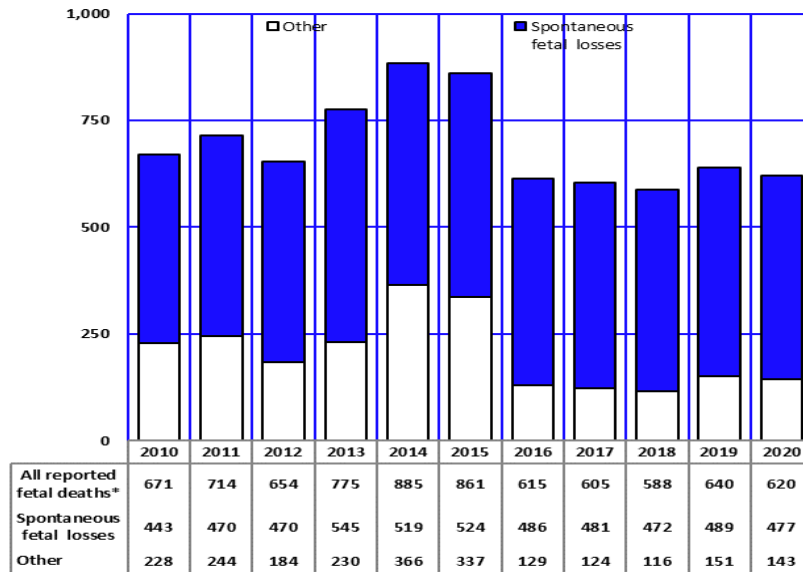
### **FETAL, PERINATAL, AND MATERNAL DEATHS**

---

In Arizona, reportable fetal deaths are those after 20 completed weeks of gestation or if the fetus weighs more than 350 grams (*ARS 36-329; Arizona Administrative Code, R9-19-302*). In addition to spontaneous stillbirths, any induced termination of pregnancy at 20 or more weeks of gestation (or, if the gestation period is unknown, when the weight of the product of human conception is more than 350 grams) also requires the filing of a fetal death certificate.

## 1C. FETAL, PERINATAL, AND MATERNAL DEATHS

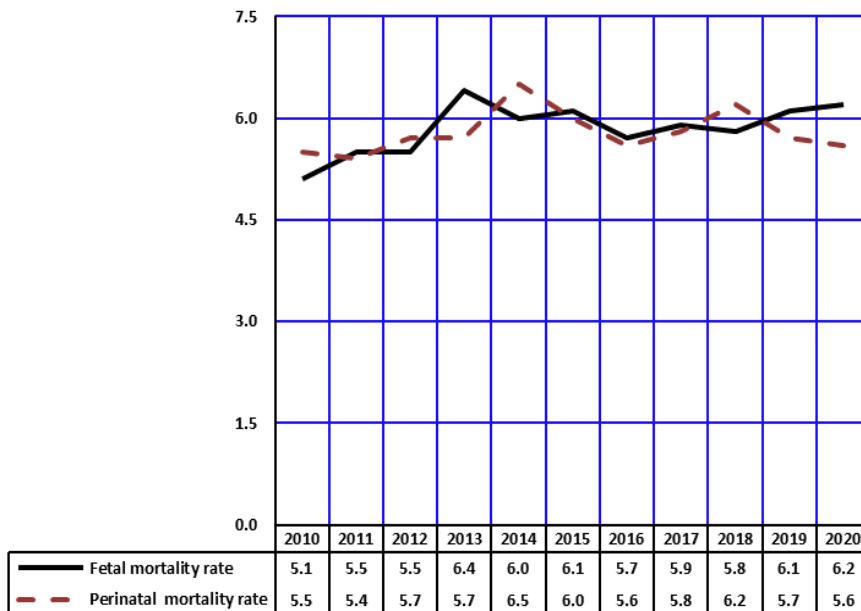
**Figure 1C-1**  
Trends in Fetal Deaths, Arizona, 2010-2020



The number of all reported fetal deaths in Arizona (including late term abortions) in 2020 was 620, a 3.1 percent decrease from 2019 (Figure 1C-1, Table 1C-3). The annual number of reportable spontaneous fetal losses decreased 2.5 percent from 489 in 2019 to 477 in 2020. (Figure 1C-1, Table 1C-3).

Note: All reported includes spontaneous and induced termination of pregnancy at 20 or more weeks of gestation or 350 grams or more and some stillbirths prior to 20 weeks and of any weight.

**Figure 1C-2**  
Fetal<sup>a</sup> and Perinatal<sup>b</sup> Mortality Rates, Arizona, 2010-2020



The fetal mortality rate increased slightly from a rate of 6.1 deaths at 20 or more weeks of gestation per 1,000 live births in 2019 to a rate of 6.2 deaths in 2020.

Perinatal mortality refers here to death of a fetus of at least 28 weeks gestational age, or of an infant less than 7 days old. The perinatal death rate per 1,000 live births has been below 6 deaths per 1,000 since 2009 then increased at 6.5 in 2014. The perinatal mortality rate of 5.6 in 2020 represented a decrease from the 2017, 2018, and 2019 rates (Figure 1C-2, Table 1C-3).

Early infant deaths accounted for 211 or 48.6 percent of the 434 perinatal deaths in 2020 (Figure 1C-2, Table 1C-3).

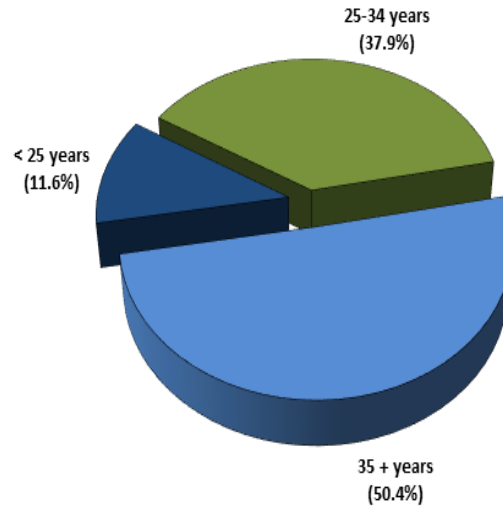
Notes: <sup>a</sup>Rate is the number of events per 1,000 live births and fetal deaths. <sup>b</sup> Infant deaths of less than 7 days and fetal deaths with gestation of 28 weeks or more, per 1,000 live births and fetal deaths.

## 1C. FETAL, PERINATAL, AND MATERNAL DEATHS

**Figure 1C-3**  
Percent of Death from Maternal Causes by Mother's Age Group,  
Arizona, 2010-2020

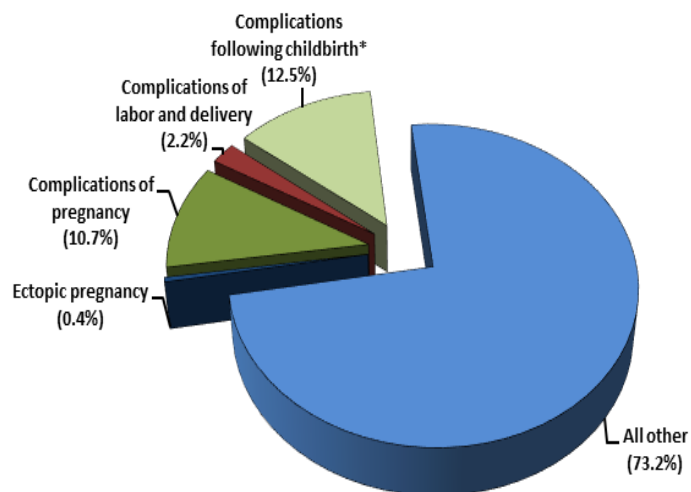
In 2020, 39 women giving birth were reported to have died from maternal causes (**Table 1C-1**). This represents a 7.1 percent decrease from the number of maternal deaths recorded in 2019. The number of maternal deaths does not include all deaths occurring to pregnant women, but only those deaths assigned to causes related to or aggravated by pregnancy or pregnancy management.

Based on the total number of 224 maternal deaths from 2010 to 2020, women age 35 and older had the highest proportional contribution to maternal mortality followed by women age 25 - 34, and women age 24 and younger (**Figure 1C-3**).



**Figure 1C-4**  
Causes of Maternal Mortality<sup>a</sup>, Arizona, 2010-2020

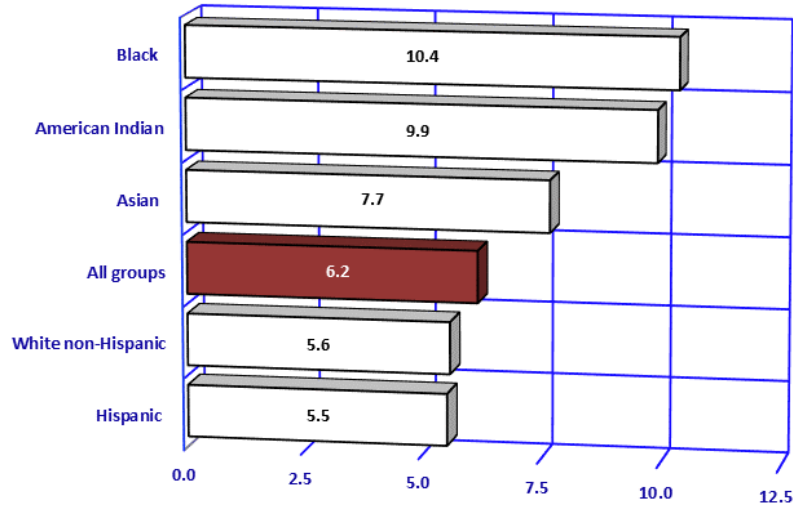
In the eleven-year period from 2010 to 2020, the major causes of maternal deaths in the state have included complications following childbirth (i.e. complications of the puerperium), complications mainly related to pregnancy, complications occurring in the course of labor and delivery, and ectopic pregnancy. All other possible causes of maternal death accounted for 73.2 percent of the maternal deaths from 2010 to 2020 (**Figure 1C-4**, **Table 1C-2**).



Notes: <sup>a</sup> Based on the total number of maternal deaths from 2010 to 2020; \* Complications of the puerperium.

1C. FETAL, PERINATAL, AND MATERNAL DEATHS

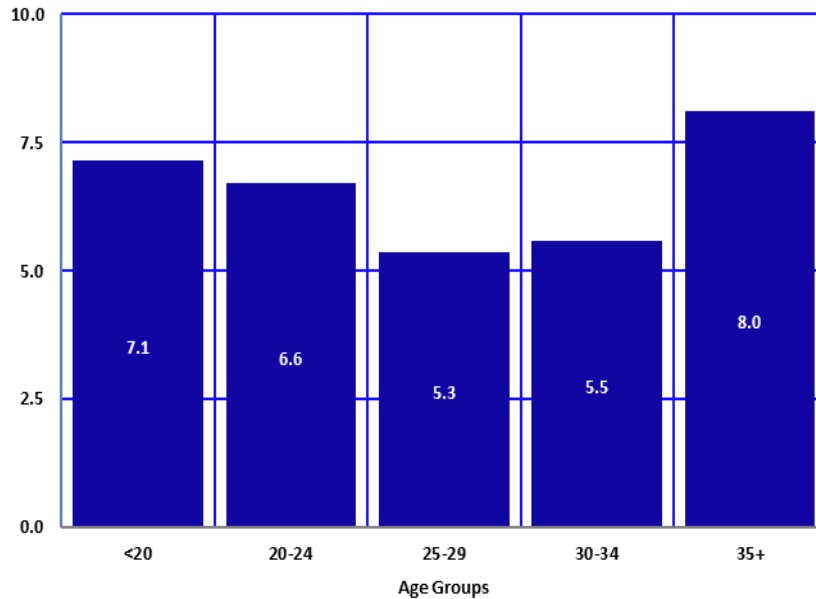
**Figure 1C-5**  
**Fetal Mortality Rates by Race/Ethnicity, Arizona, 2020**



Fetal mortality rates vary by the race/ethnicity of the mother (**Figure 1C-5**). The fetal mortality rate for Black or African American women was 10.4 per 1,000 live births plus fetal deaths, the highest rate among the racial/ethnic groups. The fetal mortality rate was also higher than the state average for American Indian women (9.9) and Asian women (7.7) while the rates of White non-Hispanic (5.6) and Hispanic or Latino (5.5), were below the state average.

Note: \* Rate is the number of fetal deaths per 1,000 live births and fetal deaths.

**Figure 1C-6**  
**Fetal Mortality Rates by Mother's Age Group, Arizona, 2020**



Fetal mortality rates vary by maternal age (**Figure 1C-6**). In 2020 fetal mortality rates were lowest for women aged 25-29 years and highest for women aged 35 years and older. The fetal mortality rate for mothers aged 35 and older increased slightly from 7.7 in 2019 to 8.0 in 2020.

Note: \* Rate is the number of fetal deaths per 1,000 live births and fetal deaths.