

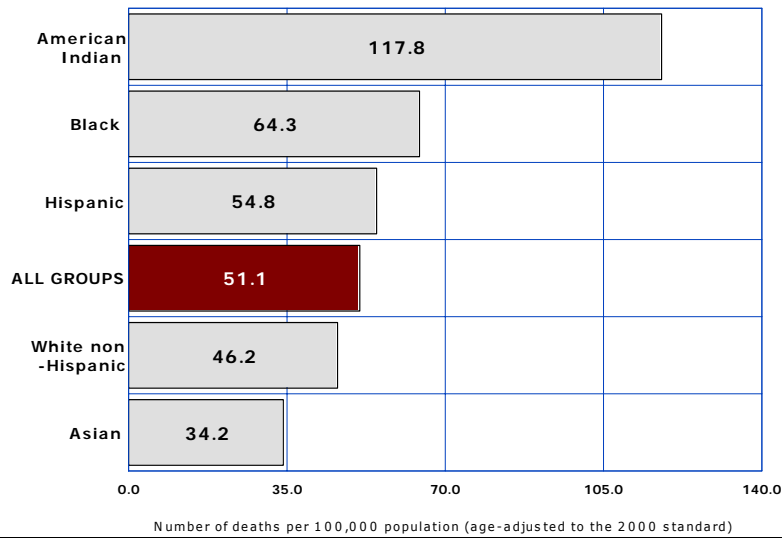
6

Mortality from Injuries

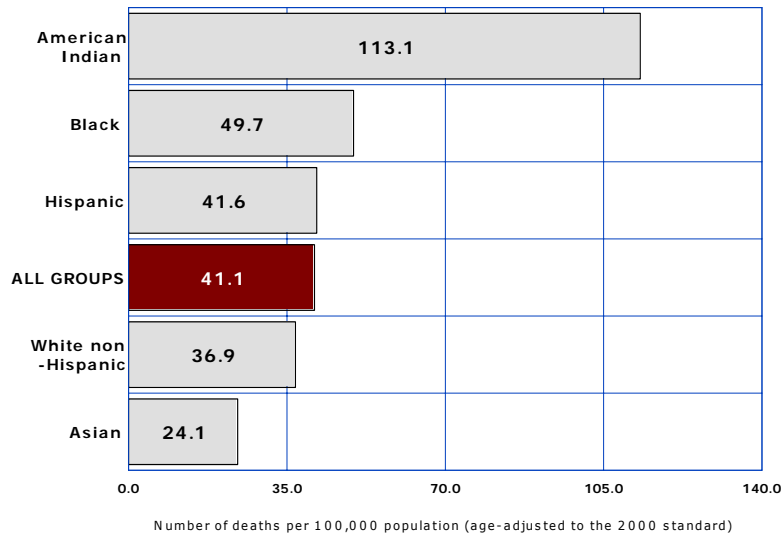
- 6-1 Unintentional Injuries
- 6-2 Motor Vehicle-Related Injuries
- 6-3 Fall-Related Injuries
- 6-4 Drowning
- 6-5 Injury by Firearms
- 6-6 Drug-Induced
- 6-7 Alcohol-Induced
- 6-8 Intentional Self-Harm (suicide)
- 6-9 Assault (homicide)

6-1 UNINTENTIONAL INJURIES

2005



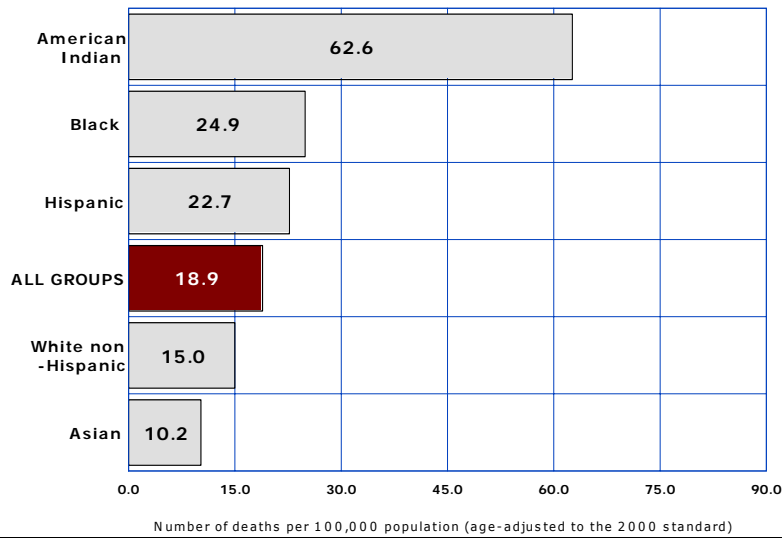
2000



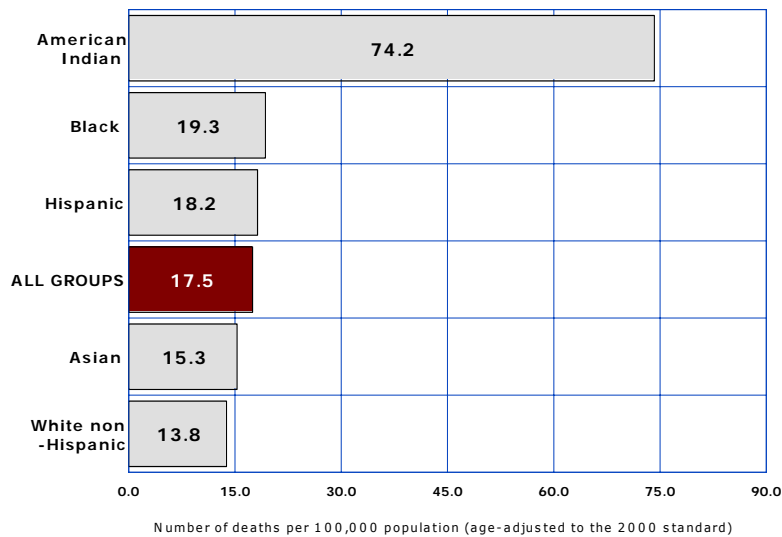
COMPARATIVE RATES FOR 2000 AND 2005						
Number of deaths per 100,000 population by race/ethnicity						
Year	All groups	White non-Hispanic	Hispanic or Latino	Black or African American	American Indian or Alaska Native	Asian or Pacific Islander
2000	41.1	36.9	41.6	49.7	113.1	24.1
2005	51.1	46.2	54.8	64.3	117.8	34.2
% change from 2000	24.3	25.2	31.7	29.4	4.2	41.9

6-2 MOTOR VEHICLE-RELATED INJURIES

2005



2000



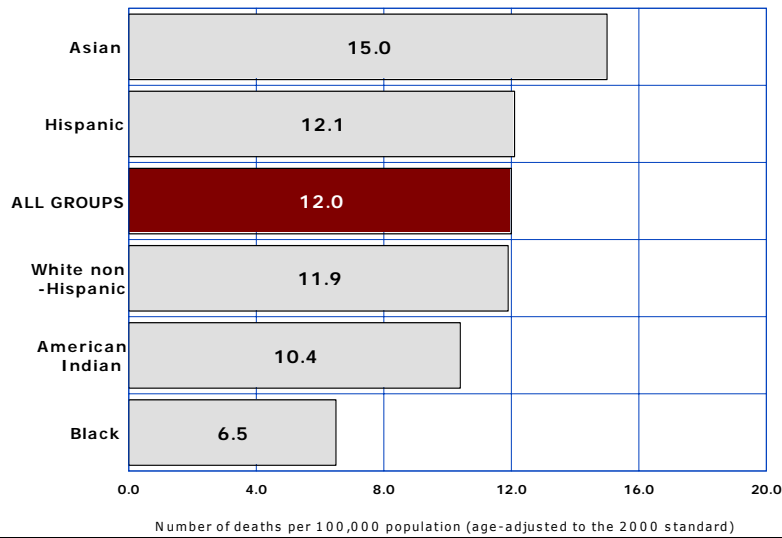
COMPARATIVE RATES FOR 2000 AND 2005

Number of deaths per 100,000 population by race/ethnicity

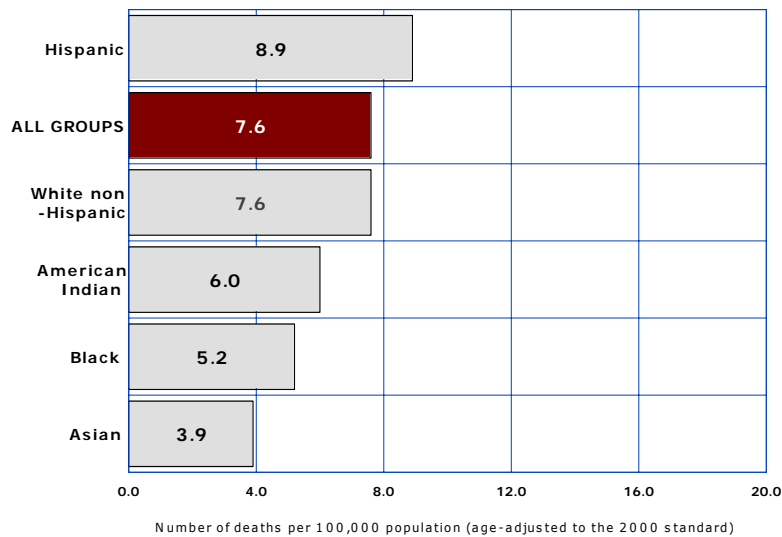
Year	All groups	White non-Hispanic	Hispanic or Latino	Black or African American	American Indian or Alaska Native	Asian or Pacific Islander
2000	17.5	13.8	18.2	19.3	74.2	15.3
2005	18.9	15.0	22.7	24.9	62.6	10.2
% change from 2000	8.0	8.7	24.7	29.0	-15.6	-33.3

6-3 FALL-RELATED INJURIES

2005



2000



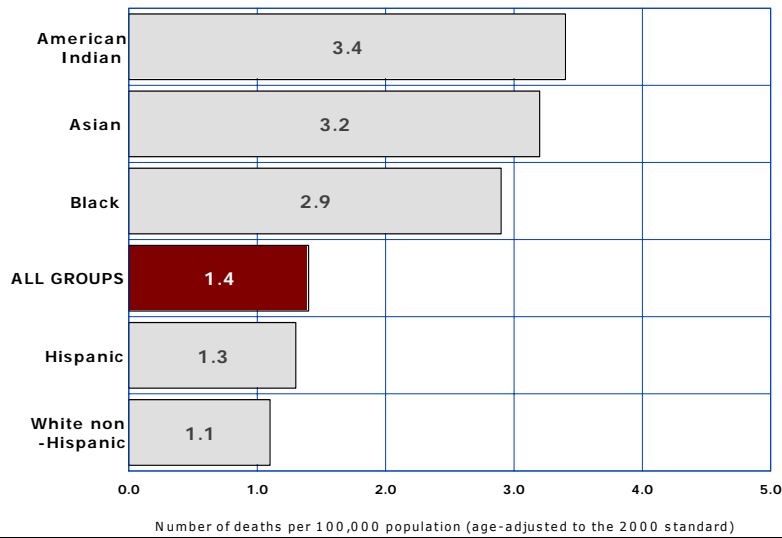
COMPARATIVE RATES FOR 2000 AND 2005

Number of deaths per 100,000 population by race/ethnicity

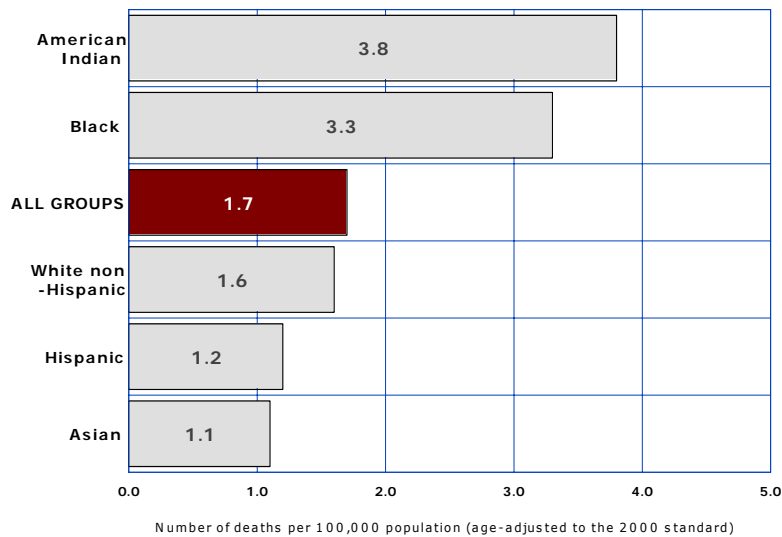
Year	All groups	White non-Hispanic	Hispanic or Latino	Black or African American	American Indian or Alaska Native	Asian or Pacific Islander
2000	7.6	7.6	8.9	5.2	6.0	3.9
2005	12.0	11.9	12.1	6.5	10.4	15.0
% change from 2000	57.9	56.6	36.0	25.0	73.3	284.6

6-4 DROWNING

2005



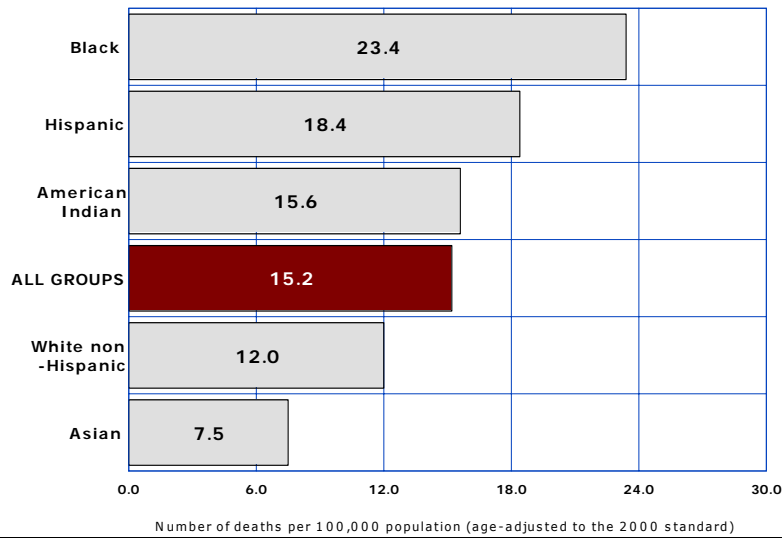
2000



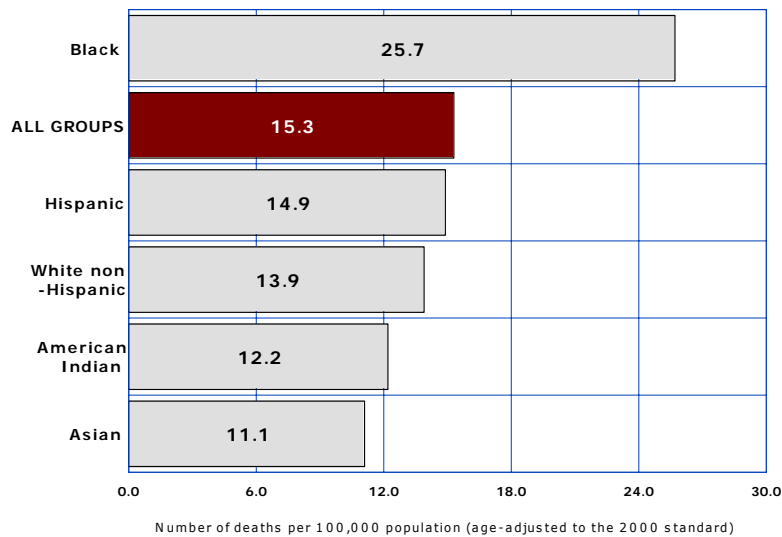
COMPARATIVE RATES FOR 2000 AND 2005						
Number of deaths per 100,000 population by race/ethnicity						
Year	All groups	White non-Hispanic	Hispanic or Latino	Black or African American	American Indian or Alaska Native	Asian or Pacific Islander
2000	1.7	1.6	1.2	3.3	3.8	1.1
2005	1.4	1.1	1.3	2.9	3.4	3.2
% change from 2000	-17.6	-31.3	8.3	-12.1	-10.5	190.9

6-5 FIREARM-RELATED

2005



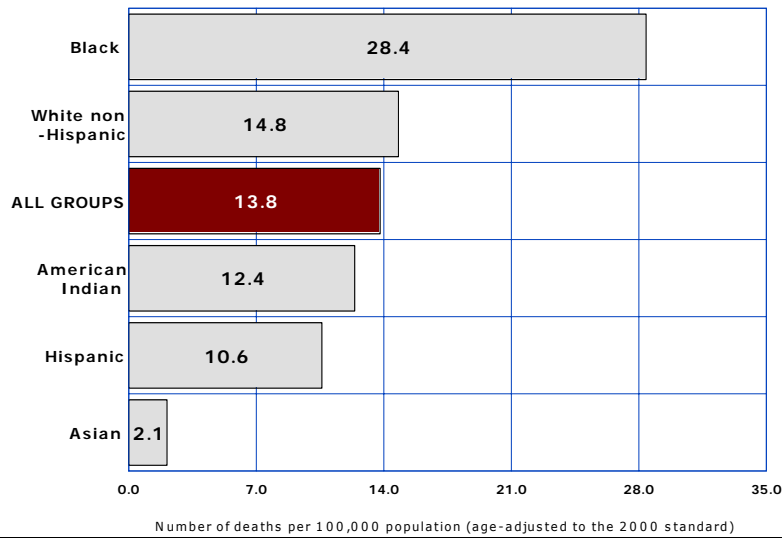
2000



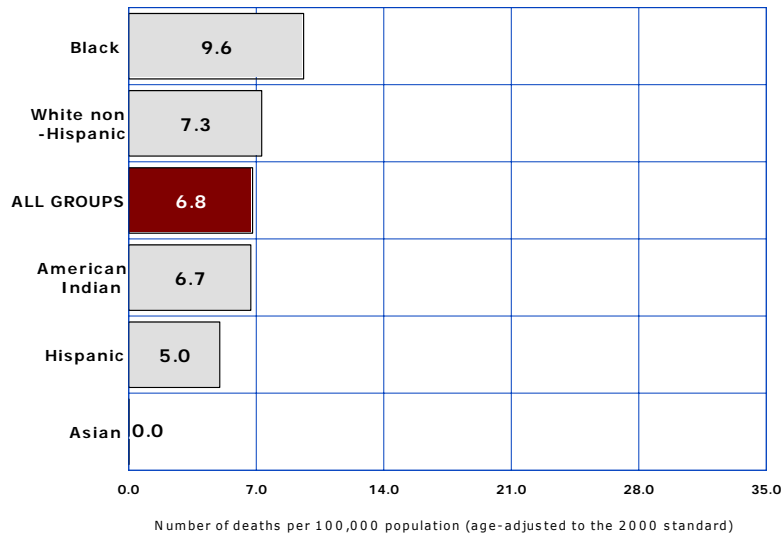
COMPARATIVE RATES FOR 2000 AND 2005						
Number of deaths per 100,000 population by race/ethnicity						
Year	All groups	White non-Hispanic	Hispanic or Latino	Black or African American	American Indian or Alaska Native	Asian or Pacific Islander
2000	15.3	13.9	14.9	25.7	12.2	11.1
2005	15.2	12.0	18.4	23.4	15.6	7.5
% change from 2000	-0.7	-13.7	23.5	-8.9	27.9	-32.4

6-6 DRUG-INDUCED

2005



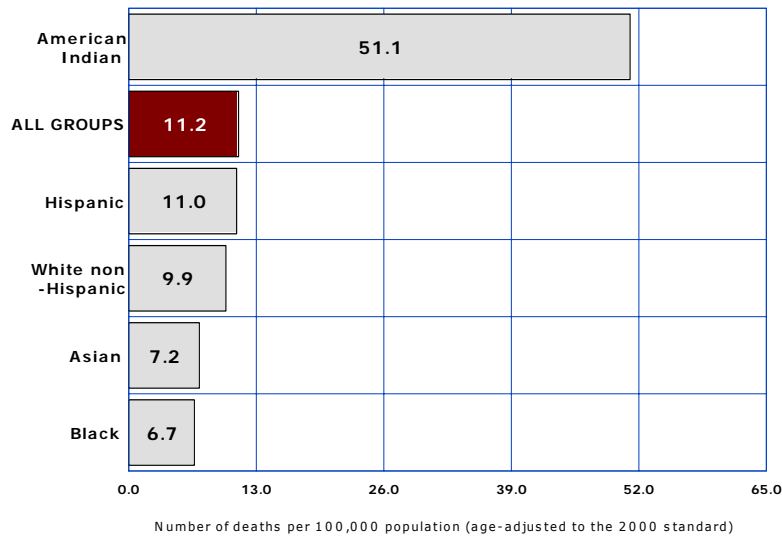
2000



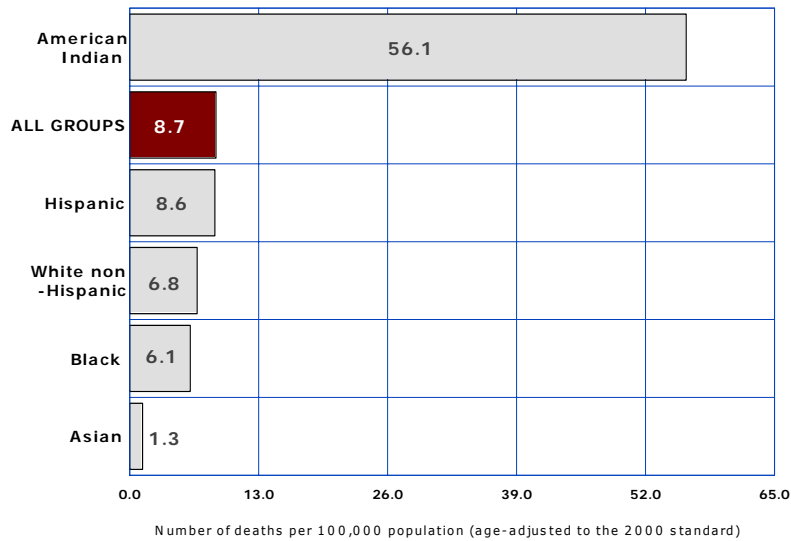
COMPARATIVE RATES FOR 2000 AND 2005						
Number of deaths per 100,000 population by race/ethnicity						
Year	All groups	White non-Hispanic	Hispanic or Latino	Black or African American	American Indian or Alaska Native	Asian or Pacific Islander
2000	6.8	7.3	5.0	9.6	6.7	0.0
2005	13.8	14.8	10.6	28.4	12.4	2.1
% change from 2000	102.9	102.7	112.0	195.8	85.1	NA

6-7 ALCOHOL-INDUCED

2005



2000



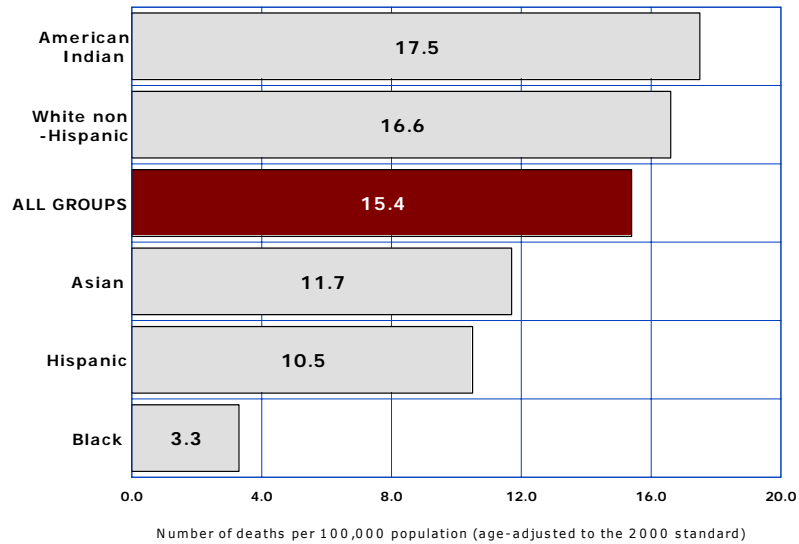
COMPARATIVE RATES FOR 2000 AND 2005

Number of deaths per 100,000 population by race/ethnicity

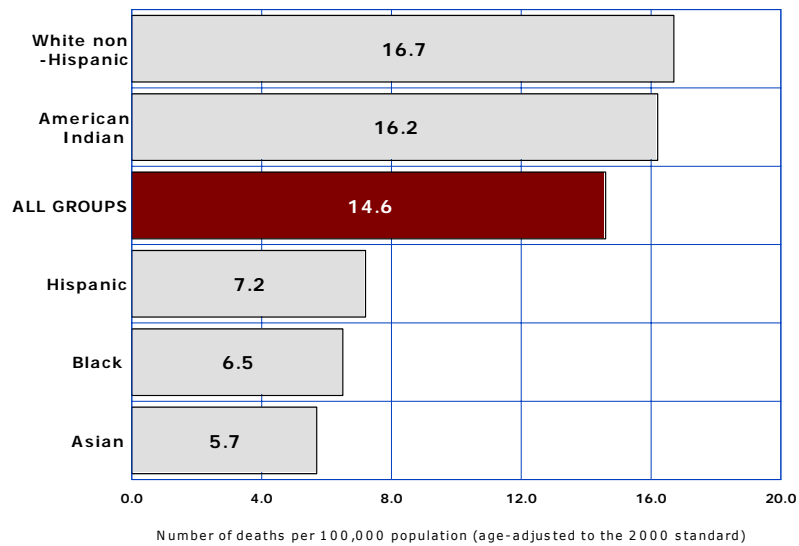
Year	All groups	White non-Hispanic	Hispanic or Latino	Black or African American	American Indian or Alaska Native	Asian or Pacific Islander
2000	8.7	6.8	8.6	6.1	56.1	1.3
2005	11.2	9.9	11.0	6.7	51.1	7.2
% change from 2000	28.7	45.6	27.9	9.8	-8.9	453.8

6-8 INTENTIONAL SELF-HARM (SUICIDE)

2005



2000



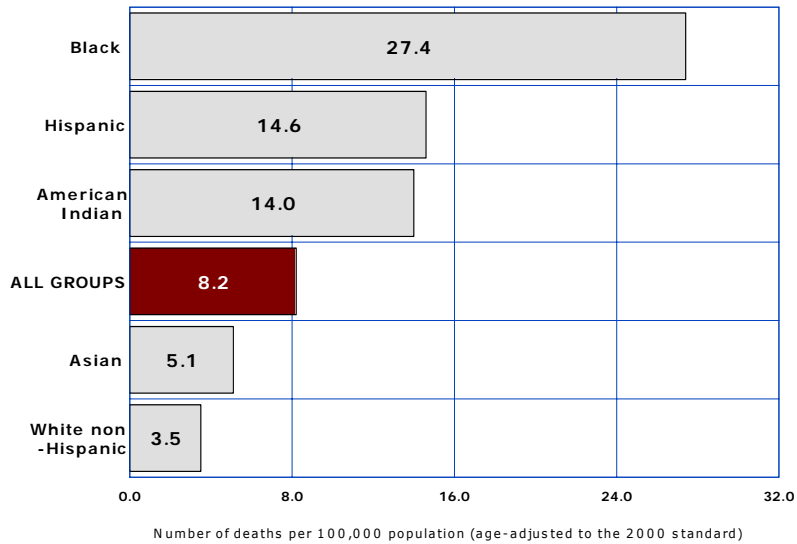
COMPARATIVE RATES FOR 2000 AND 2005

Number of deaths per 100,000 population by race/ethnicity

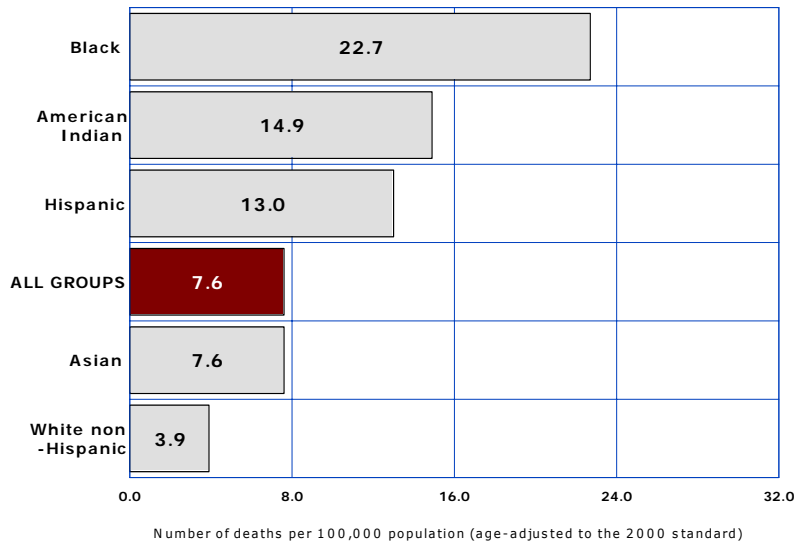
Year	All groups	White non-Hispanic	Hispanic or Latino	Black or African American	American Indian or Alaska Native	Asian or Pacific Islander
2000	14.6	16.7	7.2	6.5	16.2	5.7
2005	15.4	16.6	10.5	3.3	17.5	11.7
% change from 2000	5.5	-0.6	45.8	-49.2	8.0	105.3

6-9 ASSAULT (HOMICIDE)

2005



2000



COMPARATIVE RATES FOR 2000 AND 2005						
Number of deaths per 100,000 population by race/ethnicity						
Year	All groups	White non-Hispanic	Hispanic or Latino	Black or African American	American Indian or Alaska Native	Asian or Pacific Islander
2000	7.6	3.9	13.0	22.7	14.9	7.6
2005	8.2	3.5	14.6	27.4	14.0	5.1
% change from 2000	7.9	-10.3	12.3	20.7	-6.0	-32.9