

# INJURY MORTALITY AMONG ARIZONA RESIDENTS



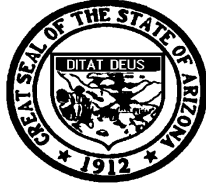
## 4. ASSAULT (HOMICIDE)

### ARIZONA, 1993-2003

**Public Health Services**  
Bureau of Public Health Statistics  
Health Status and Vital Statistics Section



~ Leadership for a Healthy Arizona ~



**Janet Napolitano, Governor**  
**State of Arizona**

**Catherine R. Eden, Director**  
**Arizona Department of Health Services**

**HEALTH STATUS AND VITAL STATISTICS SECTION**  
**BUREAU OF PUBLIC HEALTH STATISTICS**  
**ARIZONA DEPARTMENT OF HEALTH SERVICES**  
150 N. 18<sup>th</sup> Avenue, Suite 550  
Phoenix, Arizona 85007-3248  
Phone: 602/542-7333; FAX: 602/542-2940  
[www.azdhs.gov/plan](http://www.azdhs.gov/plan)

**This publication can be made available in alternative format.**  
**Please contact the Bureau of Public Health Statistics**  
**at 602/542-7333 (voice) or call 1-800-367-8939 (TDD).**

***The Arizona Department of Health Services is***  
***an Equal Employment Opportunity Agency.***

*Permission to quote from or reproduce materials from this  
publication is granted when due acknowledgment is made.*

**INJURY MORTALITY AMONG ARIZONA RESIDENTS**

**ASSAULT (HOMICIDE)**  
**ARIZONA, 1993-2003**

---

BY

CHRISTOPHER K. MRELA, PH.D., *ASSISTANT REGISTRAR OF VITAL STATISTICS*

**January 2005**

---

## **Acknowledgment**

Grateful acknowledgement is made to Richard S. Porter for reviewing the typescript.

---

# INJURY MORTALITY AMONG ARIZONA RESIDENTS

## ASSAULT (HOMICIDE), ARIZONA, 1993-2003

### TABLE OF CONTENTS

---

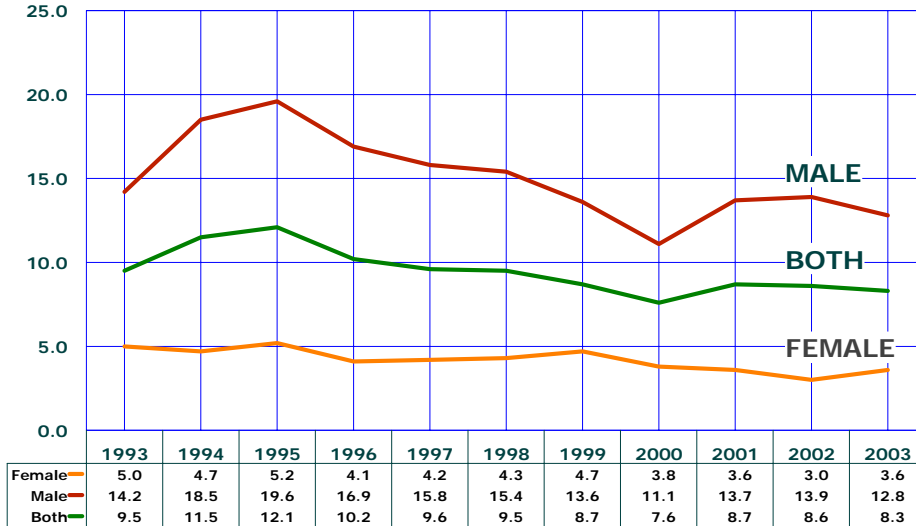
<b>Key Findings</b> .....	1-2
<b>Data Tables</b> .....	3-7
4-1 Number of homicides by means of assault and year, Arizona residents, 1993-2003 .....	3
4-2 Number of homicides by gender, age group and year, Arizona residents, 1993-2003 .....	4
4-3 Number of homicides by race/ethnicity, gender and year, Arizona residents, 1993-2003 .....	5
4-4 Number of homicides by five-year age groups and year Arizona residents, 1993-2003 .....	6
4-5 Number of homicides by county of residence and year, Arizona residents, 1993-2003 .....	7



# ASSAULT (HOMICIDE), ARIZONA, 1993-2003

## KEY FINDINGS

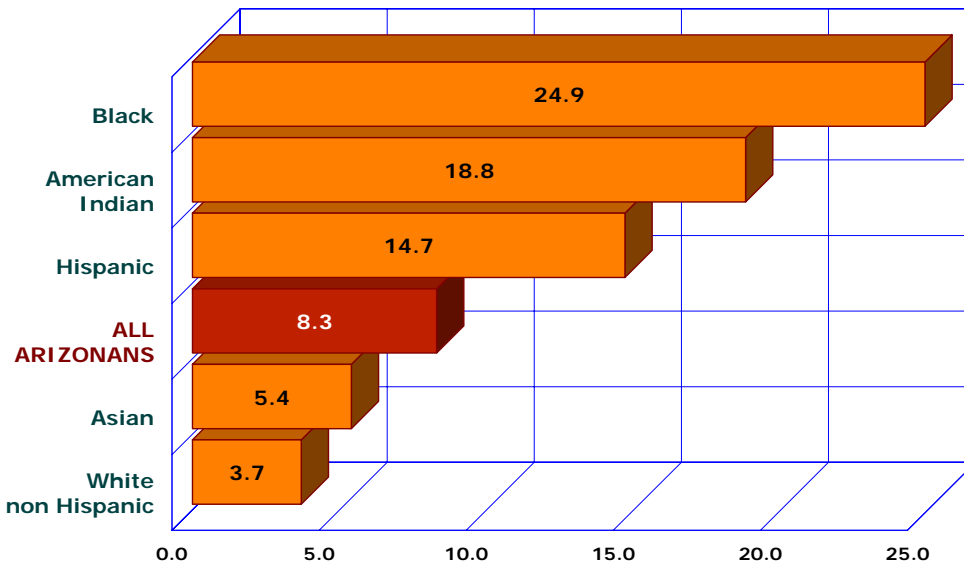
**Figure 4-1**  
Age-Adjusted \* Mortality Rates for Assault (Homicide)  
by Gender and Year, Arizona, 1993-2003



After reaching the decade's peak rate of 12.1 homicides per 100,000 population in 1995, the homicide rate has declined for the five consecutive years to a rate of 7.6/100,000 in 2000. (Figure 4-1). The homicide death rate increased for males but it declined for females both in 2001 and 2002. In contrast, in 2003, the homicide rate decreased for males and it increased for females.

\* Number of deaths per 100,000 population age-adjusted to the 2000 U.S. standard.

**Figure 4-2**  
Age-Adjusted\* Mortality Rates for Assault (Homicide)  
by Race/Ethnic Group, Arizona, 2003



The 2000 homicide rates were substantially higher among Black, American Indian and Hispanic residents of the state compared to homicide rates among White non-Hispanics and Asians. Blacks were 6.7 times more likely, while American Indians 5.1 times and Hispanics 4 times more likely to die from assault than White non-Hispanics (Figure 4-2).

\*Number of deaths per 100,000 population age-adjusted to the 2000 U.S. standard

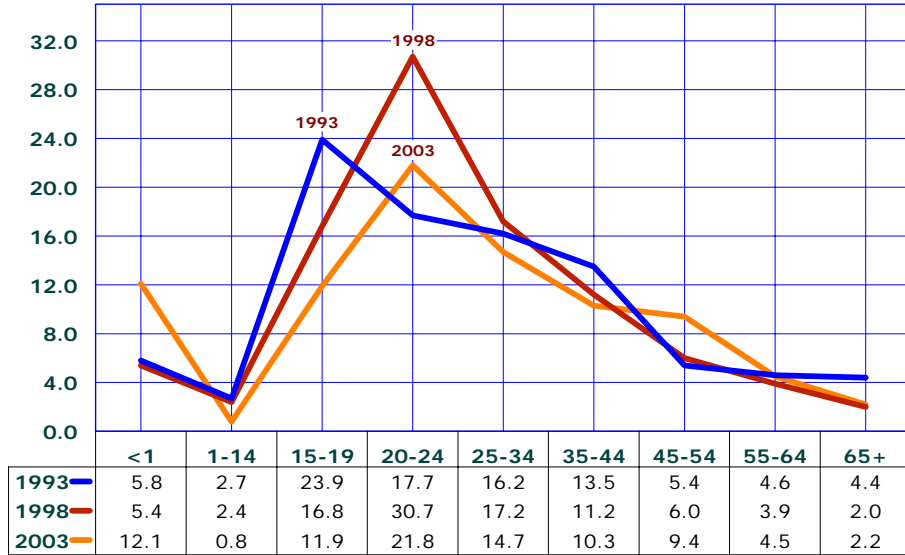
ASSAULT (HOMICIDE), ARIZONA, 1993-2003

KEY FINDINGS

In 1993, the homicide rate of 23.9/100,000 for adolescents 15-19 years old was the highest rate among the age groups (Figure 4-3). Both in 1998 and 2003, the highest age-specific homicide rates were those for young adults 20-24 years old.

The 2003 rate of 12.1 homicides per 100,000 infants was the highest homicide rate for this age since at least 1980. Eleven infants were murdered in 2003 compared to 3 babies less than one year of age assaulted in 2002.

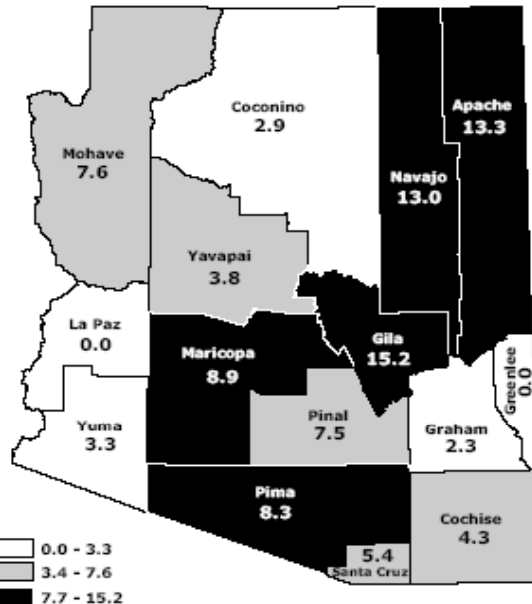
Figure 4-3  
Mortality Rates\* for Assault (Homicide) by Age Group for Selected Years, Arizona, 1993, 1998, and 2003



\*Number of homicide deaths per 100,000 population in specified group

Figure 4-4  
Age-Adjusted Mortality Rates for Assault (Homicide) By County of Residence, Arizona, 2003

The age-adjusted homicide mortality rates varied in Arizona in 2003 from zero (no fatalities) in La Paz and Greenlee counties to 13.3/100,000 in Apache County and 15.2 homicides per 100,000 population in Gila County (Figure 4-4).



NUMBER OF DEATHS PER 100,000 POPULATION (age-adjusted to 2000 standard)

ARIZONA RATE = 8.3



**TABLE 4-1  
NUMBER OF HOMICIDES BY MEANS OF ASSAULT AND YEAR, ARIZONA RESIDENTS, 1993-2003**

	1993	1994	1995	1996	1997	1998	1999	2000	2001	2002	2003
Assault by bodily force	0	0	5	0	1	1	1	6	2	0	1
Neglect, abandonment, maltreatment	4	9	10	9	5	5	5	4	4	4	7
Assault by drugs, chemicals and noxious substances	2	0	3	1	2	1	1	0	3	1	1
Assault by blunt object	0	1	0	0	0	0	1	2	1	1	1
Assault by firearms	247	349	383	320	310	318	303	271	318	346	319
Assault by explosives	0	1	1	2	1	0	0	0	0	0	0
Assault by drowning and submersion	1	1	0	0	0	1	0	1	1	0	1
Assault by hanging, strangulation, suffocation	11	17	24	16	15	19	12	9	15	6	16
Assault by sharp object	71	49	56	68	48	39	57	53	64	54	42
Assault by fire, flames, smoke	1	3	3	0	0	3	1	2	2	4	3
Assault by other means	50	47	45	43	61	60	49	46	57	62	89
<b>Total</b>	<b>387</b>	<b>477</b>	<b>530</b>	<b>459</b>	<b>443</b>	<b>447</b>	<b>430</b>	<b>394</b>	<b>467</b>	<b>478</b>	<b>480</b>

**TABLE 4-2  
NUMBER OF HOMICIDES BY GENDER, AGE GROUP AND YEAR, ARIZONA RESIDENTS, 1993-2003**

	1993	1994	1995	1996	1997	1998	1999	2000	2001	2002	2003
<b>Total</b>	387	477	530	459	443	447	430	394	467	478	480
<1	4	7	8	4	6	4	6	6	5	3	11
1-14	23	22	26	26	13	24	11	9	24	18	10
15-19	61	72	89	72	56	55	51	53	49	58	48
20-44	238	292	324	279	290	299	273	234	317	302	294
45-64	36	53	58	59	56	48	66	65	56	79	87
65+	23	27	19	17	21	13	21	26	14	12	16
Unknown	2	4	6	2	1	4	2	1	2	6	0
<b>Male</b>	286	378	417	368	352	348	315	295	374	394	379
<1	1	4	4	3	4	4	3	4	3	0	8
1-14	14	11	18	13	8	14	5	6	11	11	4
15-19	49	62	77	65	46	42	42	43	45	52	40
20-44	183	240	262	233	236	238	208	193	259	264	243
45-64	23	41	43	45	46	38	41	39	45	56	62
65+	14	17	9	7	11	9	14	9	9	8	9
Unknown	2	3	4	2	1	3	2	1	2	3	0
<b>Female</b>	101	99	113	91	91	99	115	99	93	84	101
<1	3	3	4	1	2	0	3	2	2	3	3
1-14	9	11	8	13	5	10	6	3	13	7	6
15-19	12	10	12	7	10	13	9	10	4	6	8
20-44	55	52	62	46	54	61	65	41	58	38	51
45-64	13	12	15	14	10	10	25	26	11	23	25
65+	9	10	10	10	10	4	7	17	5	4	7
Unknown	0	1	2	0	0	1	0	0	0	3	0

TABLE 4-3  
 NUMBER OF HOMICIDES BY RACE/ETHNICITY, GENDER AND YEAR, ARIZONA RESIDENTS, 1993-2003

	1993	1994	1995	1996	1997	1998	1999	2000	2001	2002	2003
<b>Total, all groups</b>											
Total	387	477	530	459	443	447	430	394	467	478	445
Male	286	378	417	368	352	348	315	295	374	394	379
Female	101	99	113	91	91	99	115	99	93	84	101
<b>White non-Hispanic</b>											
Total	171	185	222	155	160	171	146	131	141	154	101
Male	111	134	154	106	108	118	89	88	100	117	93
Female	60	51	68	49	52	53	57	43	41	37	43
<b>Hispanic</b>											
Total	127	155	191	187	184	169	184	180	233	225	226
Male	106	133	166	168	167	142	158	144	201	202	191
Female	21	22	25	19	17	27	26	36	32	23	35
<b>Black</b>											
Total	43	82	60	49	46	48	43	38	38	39	48
Male	35	67	51	40	42	41	31	31	33	34	40
Female	8	15	9	9	4	7	12	7	5	5	8
<b>American Indian</b>											
Total	42	52	52	66	46	52	49	36	47	54	54
Male	32	41	42	52	31	42	32	29	33	39	43
Female	10	11	10	14	15	10	17	7	14	15	11
<b>Asian</b>											
Total	3	2	2	0	5	4	5	7	6	2	7
Male	1	2	2	0	2	3	2	2	5	0	3
Female	2	0	0	0	3	1	3	5	1	2	4
<b>Other/Unknown</b>											
Total	1	1	3	2	2	3	3	2	2	4	9
Male	1	1	2	2	2	2	3	1	2	2	9
Female	0	0	1	0	0	1	0	1	0	2	0

TABLE 4-4  
 NUMBER OF HOMICIDES BY FIVE-YEAR AGE GROUPS AND YEAR, ARIZONA RESIDENTS, 1993-2003

	1993	1994	1995	1996	1997	1998	1999	2000	2001	2002	2003
<1	4	7	8	4	6	4	6	6	5	3	11
1-4	8	15	11	8	3	9	6	3	6	11	9
5-9	4	3	2	8	3	4	2	5	8	2	1
10-14	11	4	13	10	7	11	3	1	10	5	0
15-19	61	72	89	72	56	55	51	53	49	58	48
20-24	52	88	76	73	81	98	66	57	99	84	87
25-29	55	72	80	67	76	66	72	50	74	61	70
30-34	51	50	65	54	55	54	52	59	53	63	50
35-39	39	54	54	44	49	37	51	37	54	51	45
40-44	41	28	49	41	29	44	32	31	37	43	42
45-49	16	23	28	20	22	22	34	23	27	28	36
50-54	6	11	17	22	19	11	17	16	19	20	29
55-59	9	9	10	12	9	10	8	19	7	17	14
60-64	5	10	3	5	6	5	7	7	3	14	8
65-69	7	5	7	7	5	2	5	9	5	4	3
70-74	10	8	4	3	5	4	7	6	4	3	7
75-79	4	9	2	3	5	3	5	6	3	4	2
80-84	2	3	4	0	3	2	4	4	1	1	2
85-89	0	1	1	1	2	2	0	1	0	0	1
90-94	0	0	1	3	0	0	0	0	1	0	1
95-99	0	1	0	0	1	0	0	0	0	0	0
Unknown	2	4	6	2	1	4	2	1	2	6	0
Total	387	477	530	459	443	447	430	394	467	478	480

TABLE 4-5  
 NUMBER OF HOMICIDES BY COUNTY OF RESIDENCE AND YEAR, ARIZONA RESIDENTS, 1993-2003

	1993	1994	1995	1996	1997	1998	1999	2000	2001	2002	2003
Apache	10	7	11	25	15	12	7	5	7	17	8
Cochise	4	11	7	4	7	10	3	9	10	4	5
Coconino	4	10	11	5	6	10	12	9	7	9	5
Gila	5	3	5	6	4	2	3	4	7	2	7
Graham	0	1	2	1	2	1	4	2	1	2	4
Greenlee	0	0	0	2	0	0	1	0	0	1	0
Maricopa	222	299	336	262	275	270	282	242	335	298	319
Mohave	16	13	8	10	12	10	14	8	8	6	12
Navajo	15	9	9	11	9	12	6	7	7	12	13
Pima	67	59	95	78	65	69	61	87	51	92	77
Pinal	8	14	20	13	16	18	12	10	18	17	14
Santa Cruz	1	1	2	1	3	3	2	1	4	1	2
Yavapai	10	12	7	5	8	8	11	5	7	9	7
Yuma	8	12	6	2	6	5	7	4	5	6	6
La Paz	1	4	2	2	0	2	0	1	0	1	0
Unknown	16	22	9	32	15	15	5	0	0	1	1
Total	387	477	530	459	443	447	430	394	467	478	480

