



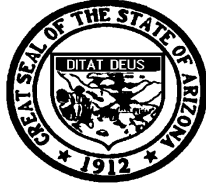
**6.  
EVENTS OF  
UNDETERMINED  
INTENT**

**ARIZONA,  
1993-2003**

**Public Health Services**  
Bureau of Public Health Statistics  
Health Status and Vital Statistics Section



~ Leadership for a Healthy Arizona ~



**Janet Napolitano, Governor**  
*State of Arizona*

**Catherine R. Eden, Director**  
*Arizona Department of Health Services*

**HEALTH STATUS AND VITAL STATISTICS SECTION**  
**BUREAU OF PUBLIC HEALTH STATISTICS**  
**ARIZONA DEPARTMENT OF HEALTH SERVICES**  
150 N. 18<sup>th</sup> Avenue, Suite 550  
Phoenix, Arizona 85007-3248  
Phone: 602/542-7333; FAX: 602/542-2940  
[www.azdhs.gov/plan](http://www.azdhs.gov/plan)

**This publication can be made available in alternative format.**  
Please contact the Bureau of Public Health Statistics  
at 602/542-7333 (voice) or call 1-800-367-8939 (TDD).

*The Arizona Department of Health Services is  
an Equal Employment Opportunity Agency.*

*Permission to quote from or reproduce materials from this  
publication is granted when due acknowledgment is made.*

**INJURY MORTALITY AMONG ARIZONA RESIDENTS**

**EVENTS OF UNDETERMINED  
INTENT  
ARIZONA, 1993-2003**

---

BY

CHRISTOPHER K. MRELA, PH.D., *ASSISTANT REGISTRAR OF VITAL STATISTICS*

**January 2005**

---

## **Acknowledgment**

Grateful acknowledgement is made to Richard S. Porter for reviewing the typescript.

---

# EVENTS OF UNDETERMINED INTENT, ARIZONA, 1993-2003

## TABLE OF CONTENTS

**Key Findings/Figures** ..... 1-2

**Data Tables** ..... 3-7

6-1 Deaths due to events of undetermined intent by year,  
Arizona residents, 1993-2003 ..... 3

6-2 Deaths due to events of undetermined intent by five-year age groups  
and year, Arizona residents, 1993-2003 ..... 4

6-3 Deaths due to events of undetermined intent by race/ethnicity, age  
group and year, Arizona residents, 1993-2003 ..... 5

6-4 Deaths due to events of undetermined intent by gender, race/ethnicity  
and year, Arizona residents, 1993-2003 ..... 6

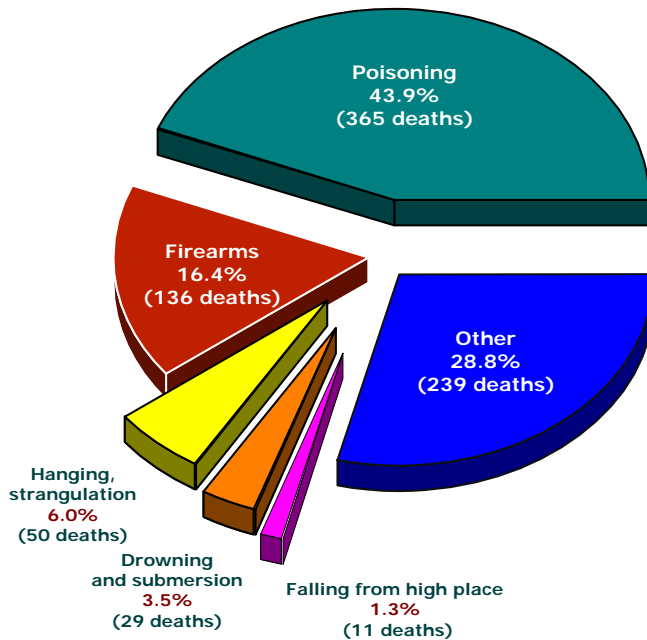
6-5 Deaths due to events of undetermined intent by county of residence  
and year, Arizona, 1993-2003 ..... 7

EVENTS OF UNDETERMINED INTENT, ARIZONA, 1993-2003

KEY FINDINGS

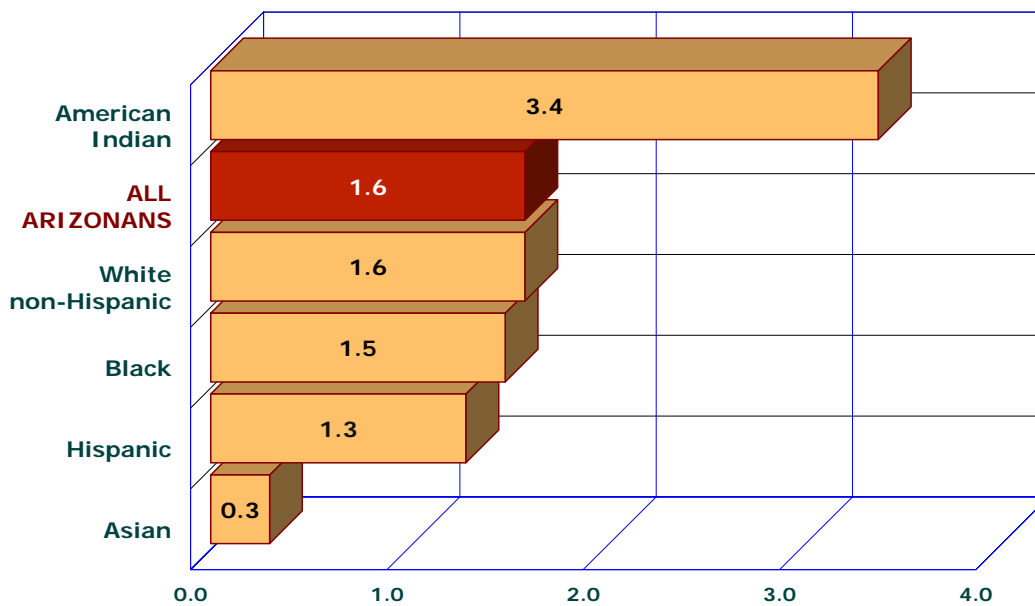
**Figure 6-1**  
**Number and Percent of Deaths Due to**  
**Events of Undetermined Intent By Mortality Category,**  
**Arizona, 1993-2003**

N = 830 deaths in 1993-2003



During 1993-2003, there were 830 deaths of Arizona residents where available information was insufficient to enable a medical or legal authority to make a distinction between accident, self-harm and assault. Events where poisoning or firearms were involved accounted for the majority of all injury deaths, which were undetermined whether they were accidentally, or purposely inflicted (Figure 6-1, table 6-1).

**Figure 6-2**  
**Average Annual\* Mortality Rates for Events of Undetermined**  
**Intent by Race/Ethnic Group, Arizona, 1993-2003**



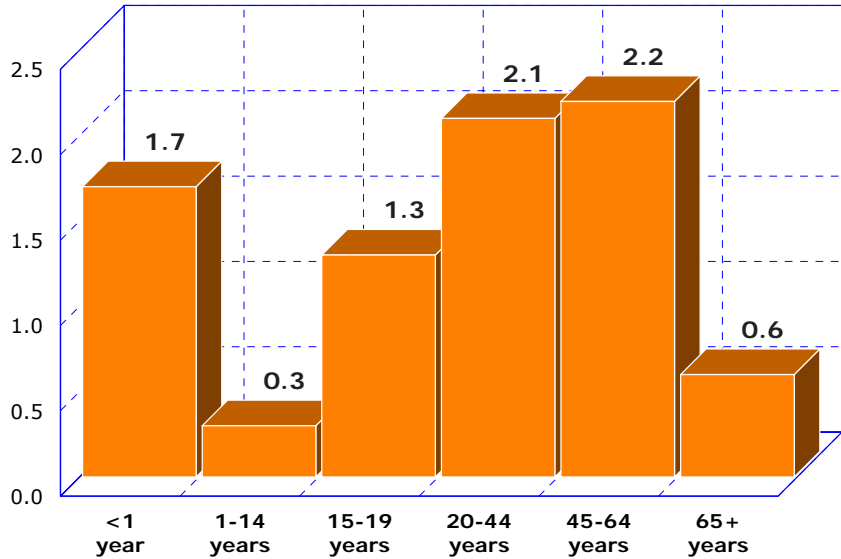
During 1993-2003, American Indian residents of Arizona had the highest among ethnic groups average annual mortality rate for fatal injuries of undetermined intent (Figure 6-2). The average annual rate of 3.4 injury deaths due to events of undetermined intent among American Indians was 11.3 times greater than the rate of 0.3/100,000 among Asians.

\*Number of deaths in events of undetermined intent per 100,000 population in specified group per year from 1993 to 2003. The rates were computed using an 11-year total number of deaths for 1993-2003. The 1998 populations figures for each group multiplied by eleven, were used as denominators.

EVENTS OF UNDETERMINED INTENT, ARIZONA, 1993-2003

KEY FINDINGS

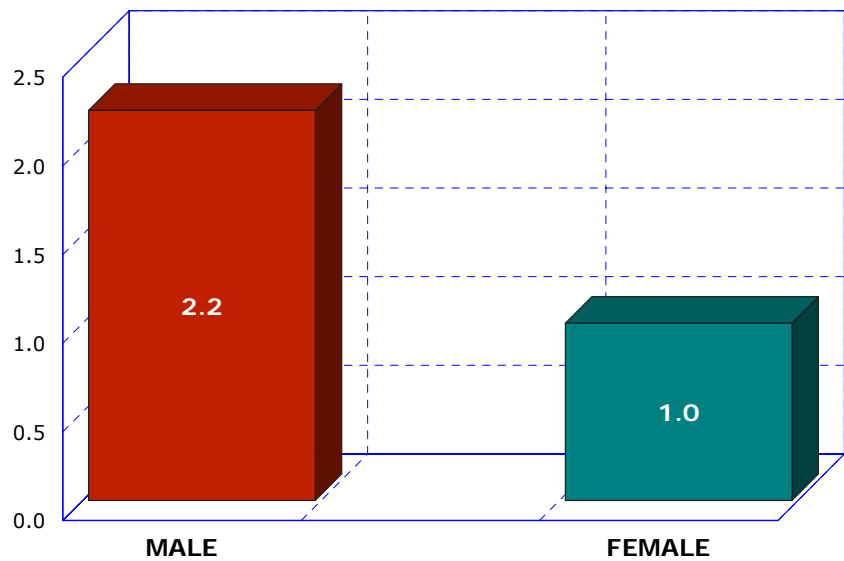
**Figure 6-3**  
Average Annual Rates\*for Injury Deaths Due to Events of Undetermined Intent by Age Group, Arizona, 1993-2003



In 1993-2003, middle-aged Arizonans 45-64 years old had the highest average annual mortality rate for injuries due to events of undetermined intent (2.2 deaths per 100,000 persons), followed by young adults aged 20-44 years (2.1/100,000), and infants under one year of age (1.7/100,000, **Figure 6-3**).

\*Number of injury deaths due to events of undetermined intent per 100,000 population in specified group per year from 1993 to 2003. The rates were computed using an 11-year total number of deaths for 1993-2003. The 1998 population figures for each group multiplied by eleven were used as denominators.

**Figure 6-4**  
Average Annual Rates\*for Injury Deaths Due to Events of Undetermined Intent by Gender, Arizona, 1993-2003



Among the 830 deaths in 1993-2003 due to injuries of undetermined intent, 573 were males and 257 were females. The average annual male mortality rate for injuries of undetermined intent was 2.2 times greater than the female rate (**Figure 6-4**).

\*Number of injury deaths due to events of undetermined intent per 100,000 population in specified group per year from 1993 to 2003. The rates were computed using an 11-year total number of deaths for 1993-2003. The 1998 population figures for each group multiplied by eleven were used as denominators.

**TABLE 6-1  
DEATHS DUE TO EVENTS OF UNDETERMINED INTENT BY YEAR, ARIZONA RESIDENTS, 1993-2003**

	1993	1994	1995	1996	1997	1998	1999	2000	2001	2002	2003
Poisoning by solid or liquids	24	19	20	22	27	38	45	21	41	44	48
Poisoning by gases or vapors	0	0	2	2	2	0	2	2	0	2	4
Hanging, strangulation	2	4	0	5	8	8	4	3	9	2	5
Drowning and submersion	2	2	2	2	3	3	1	0	7	3	4
Firearms and explosives	11	17	11	9	14	12	7	10	18	13	14
Falling from high place	0	1	2	1	1	1	1	0	0	1	3
Other	31	43	15	14	20	14	12	17	26	23	24
<b>Total</b>	<b>70</b>	<b>86</b>	<b>52</b>	<b>55</b>	<b>75</b>	<b>76</b>	<b>72</b>	<b>53</b>	<b>101</b>	<b>88</b>	<b>102</b>



TABLE 6-2  
DEATHS DUE TO EVENTS OF UNDETERMINED INTENT BY FIVE-YEAR AGE GROUPS AND YEAR,  
ARIZONA RESIDENTS, 1993-2003

	1993	1994	1995	1996	1997	1998	1999	2000	2001	2002	2003
<1	1	2	0	1	3	1	0	1	2	2	1
1-4	0	1	0	2	3	0	0	0	2	0	1
5-9	0	0	0	0	1	0	0	0	0	0	1
10-14	2	6	1	0	2	1	1	1	1	2	2
15-19	4	4	5	6	4	2	4	3	6	8	1
20-24	6	6	4	1	4	4	5	3	7	2	4
25-29	5	3	5	4	3	6	8	4	8	4	5
30-34	7	13	10	6	12	7	8	2	10	10	10
35-39	13	9	6	10	8	13	6	4	15	15	11
40-44	4	9	9	8	11	10	8	6	16	9	11
45-49	4	2	4	5	8	10	7	11	9	8	16
50-54	4	4	2	3	4	6	4	5	10	9	14
55-59	4	3	2	2	3	6	3	3	2	3	11
60-64	3	9	2	2	1	1	5	2	4	6	5
65-69	2	2	0	2	1	3	2	1	2	1	3
70-74	4	5	0	0	4	2	2	1	1	3	0
75-79	2	0	1	0	2	2	4	1	1	0	3
80-84	1	3	0	1	1	1	0	2	1	2	2
85-89	1	1	0	0	0	0	0	0	0	1	1
90-94	0	1	0	1	0	1	1	1	0	0	0
95-99	0	1	0	0	0	0	1	0	0	0	0
Unknown	3	2	1	1	0	0	3	2	4	3	0
Total	70	86	52	55	75	76	72	53	101	88	102

TABLE 6-3  
 DEATHS DUE TO EVENTS OF UNDETERMINED INTENT BY RACE/ETHNICITY, AGE GROUP AND YEAR,  
 ARIZONA RESIDENTS, 1993-2003

	1993	1994	1995	1996	1997	1998	1999	2000	2001	2002	2003
<b>White non-Hispanic</b>											
Total	40	49	34	34	34	55	47	39	68	61	72
<1	0	1	0	0	0	3	1	0	1	0	0
1-14	1	3	1	2	3	3	1	1	1	2	0
15-19	1	0	1	2	2	2	0	0	3	2	0
20-44	20	22	24	17	25	26	20	14	39	29	24
45-64	11	12	6	10	16	19	16	17	19	21	40
65+	7	11	1	2	6	6	7	5	5	6	8
Unknown	0	0	1	1	0	0	3	1	1	1	0
Total	13	16	9	11	8	10	9	6	23	16	18
<1	0	0	0	1	0	0	0	0	2	1	1
1-14	0	1	0	0	2	0	0	0	2	0	1
15-19	2	3	1	3	1	0	4	3	2	6	1
20-44	7	9	7	7	5	7	4	3	13	7	11
45-64	2	2	1	0	0	2	1	0	3	2	3
65+	2	1	0	0	0	1	0	0	0	0	1
Unknown	0	0	0	0	0	0	0	0	1	0	0
Total	2	4	2	2	1	0	5	1	4	4	2
<1	0	1	0	0	0	0	0	0	0	0	0
15-19	0	1	1	1	1	0	0	0	0	0	1
20-44	2	2	1	1	0	0	3	1	2	4	0
45-64	0	0	0	0	0	0	1	0	2	0	1
65+	0	0	0	0	0	0	1	0	0	0	0
Unknown	0	0	0	0	0	0	0	0	0	0	0
Total	13	13	7	7	10	11	10	5	4	5	10
<1	1	0	0	0	0	0	0	0	0	1	0
1-14	1	3	0	0	0	0	0	0	0	0	2
15-19	1	0	2	0	0	0	0	0	1	0	0
20-44	6	7	2	4	8	7	7	1	2	0	5
45-64	2	3	3	1	0	2	1	3	1	3	3
65+	1	0	0	2	2	2	2	1	0	1	0
Unknown	1	0	0	0	0	0	0	0	0	0	0
Total	0	1	0	1	1	0	0	0	0	0	0
1-14	0	0	0	0	1	0	0	0	0	0	0
45-64	0	1	0	1	0	0	0	0	0	0	0
65+	0	0	0	0	0	0	0	0	0	0	0
Total	2	3	0	0	0	0	1	2	2	2	0
20-44	0	0	0	0	0	0	1	0	0	0	0
45-64	0	0	0	0	0	0	0	1	0	0	0
65+	0	1	0	0	0	0	0	0	0	0	0
Unknown	2	2	0	0	0	0	0	1	2	2	0

TABLE 6-4  
 DEATHS DUE TO EVENTS OF UNDETERMINED INTENT BY GENDER, RACE/ETHNICITY AND YEAR,  
 ARIZONA RESIDENTS, 1993-2003

	1993	1994	1995	1996	1997	1998	1999	2000	2001	2002	2003
<b>Total</b>	70	86	52	55	75	76	72	53	101	88	102
White non-Hispanic	40	49	34	34	55	55	47	39	68	61	72
Hispanic	13	16	9	11	8	10	9	6	23	16	18
Black	2	4	2	2	1	0	5	1	4	4	2
American Indian	13	13	7	7	10	11	10	5	4	5	10
Asian	0	1	0	1	1	0	0	0	0	0	0
Other/Unknown	2	3	0	0	0	0	1	2	2	2	0
<b>Male</b>	55	64	36	39	56	46	45	35	73	54	70
White non-Hispanic	27	33	22	21	37	34	28	23	49	35	46
Hispanic	13	14	8	9	7	4	7	5	16	13	14
Black	2	4	2	1	1	0	2	1	2	2	1
American Indian	11	10	4	7	10	8	8	5	4	3	9
Asian	0	0	0	1	1	0	0	0	0	0	0
Other/Unknown	2	3	0	0	0	0	0	1	2	1	0
<b>Female</b>	15	22	16	16	19	30	27	18	28	34	32
White non-Hispanic	13	16	12	13	18	21	19	16	19	26	26
Hispanic	0	2	1	2	1	6	2	1	7	3	4
Black	0	0	0	1	0	0	3	0	2	2	1
American Indian	2	3	3	0	0	3	2	0	0	2	1
Asian	0	1	0	0	0	0	0	0	0	0	0
Other/Unknown	0	0	0	0	0	0	1	1	0	1	0

TABLE 6-5  
DEATHS DUE TO EVENTS OF UNDETERMINED INTENT BY COUNTY OF RESIDENCE AND YEAR,  
ARIZONA, 1993-2003

	1993	1994	1995	1996	1997	1998	1999	2000	2001	2002	2003
Apache	6	5	1	1	1	6	2	2	1	5	3
Cochise	1	2	3	0	5	3	0	4	1	5	2
Coconino	2	2	1	3	1	2	1	1	1	1	0
Gila	1	0	1	2	1	2	0	1	1	2	1
Graham	2	1	0	2	2	0	3	0	0	0	1
Greenlee	1	0	0	0	0	0	0	0	0	0	0
Maricopa	19	23	17	21	25	26	30	15	45	49	61
Mohave	4	2	2	2	4	4	6	3	9	3	4
Navajo	2	2	1	2	4	2	4	3	4	1	4
Pima	16	30	16	12	22	24	19	19	25	17	16
Pinal	5	8	1	3	4	1	6	1	7	2	3
Santa Cruz	0	2	0	0	0	0	0	1	1	0	0
Yavapai	4	2	1	1	2	1	0	2	2	2	6
Yuma	1	4	2	1	1	1	1	1	3	0	0
La Paz	0	0	0	0	0	0	0	0	1	1	1
Unknown	6	3	6	5	3	4	0	0	0	0	0
Total	70	86	52	55	75	76	72	53	101	88	102