

TEENAGE PREGNANCY

Arizona, 2004-2014



**Arizona
Department of
Health Services**

**Public Health Services
Bureau of Public Health Statistics
Population Health and Vital Statistics Section**

~ Health and Wellness for all Arizonans ~



Doug A. Ducey, Governor
State of Arizona

Cara M. Christ, M.D., Director
Arizona Department of Health Services

POPULATION HEALTH AND VITAL STATISTICS SECTION
BUREAU OF PUBLIC HEALTH STATISTICS
ARIZONA DEPARTMENT OF HEALTH SERVICES

150 North 18th Avenue, Suite 550
Phoenix, Arizona 85007
Phone: 602/542-7333; FAX: 602/542-2940
www.azdhs.gov/plan

This publication can be made available in alternative format.
Please contact the Bureau of Public Health Statistics
at 602/542-7333 (voice) or call 1-800-367-8939 (TDD).

The Arizona Department of Health Services is
an Equal Employment Opportunity Agency.

Permission to quote from or reproduce materials from this
publication is granted when due acknowledgment is made.

TEENAGE PREGNANCY, ARIZONA, 2004-2014

by

Marguerite L. Sagna, Ph.D., *Arizona Vital Statistician*
Sanhita Gupta, *Vital Statistics Health Management Analyst*
Clare Torres, *Senior Health Data Analyst*

March 2016

TEENAGE PREGNANCY, ARIZONA, 2004-2014

Table of Contents

PURPOSE	1
METHODS AND SOURCES	1
DATA ORGANIZATION	1
COMPARATIVE NATIONAL AND STATE DATA	2
KEY FINDINGS	2
DATA TABLES	11

List of Figures

Figure 1	3
PREGNANCY RATES BY AGE GROUP AND YEAR AMONG FEMALES 19 OR YOUNGER, ARIZONA, 2004-2014	
Figure 2	3
TRENDS IN THE NUMBER OF PREGNANCIES AND PREGNANCY RATES AMONG FEMALES 19 OR YOUNGER, ARIZONA, 2004-2014	
Figure 3	4
TRENDS IN THE NUMBER OF PREGNANCIES BY RACE/ETHNICITY AMONG FEMALES 19 OR YOUNGER, ARIZONA, 2004-2014	
Figure 4	4
COMPARISON OF PREGNANCY RATES BY YEAR AMONG HISPANIC OR LATINOS AND ALL FEMALES 19 OR YOUNGER, ARIZONA, 2004-2014	
Figure 5	5
COMPARISON OF PREGNANCY RATES BY YEAR AMONG WHITE NON-HISPANICS AND ALL FEMALES 19 OR YOUNGER, ARIZONA, 2004-2014	
Figure 6	5
COMPARISON OF PREGNANCY RATES BY YEAR AMONG AMERICAN INDIAN OR ALASKA NATIVES AND ALL FEMALES 19 OR YOUNGER, ARIZONA, 2004-2014	
Figure 7	6
COMPARISON OF PREGNANCY RATES BY YEAR AMONG BLACK OR AFRICAN AMERICANS AND ALL FEMALES 19 OR YOUNGER, ARIZONA, 2004-2014	
Figure 8	6
COMPARISON OF PREGNANCY RATES BY YEAR AMONG ASIAN OR PACIFIC ISLANDERS AND ALL FEMALES 19 OR YOUNGER, ARIZONA, 2004-2014	
Figure 9	7
PROPORTIONAL CONTRIBUTION OF SURGICAL AND NON-SURGICAL ABORTIONS BY YEAR AMONG FEMALES 19 OR YOUNGER, ARIZONA, 2004-2014	
Figure 10	7
CUMULATIVE NUMBER OF MOTHERS WHO WERE 19 OR YOUNGER IN ARIZONA BY YEAR, 2004-2014	
Figure 11	8
RATES OF FIRST AND REPEAT BIRTHS TO FEMALES 15-19 YEARS, ARIZONA, 2004 AND 2014	
Figure 12	8
BIRTHS TO MOTHERS 19 OR YOUNGER BY MARITAL STATUS, ARIZONA, 1994, 2004, AND 2014	
Figure 13	9
NUMBER OF BIRTHS TO MOTHERS 19 OR YOUNGER BY PAYEE, ARIZONA, 2004 AND 2014	
Figure 14	9
TRENDS IN THE INCIDENCE OF SEXUALLY TRANSMITTED INFECTIONS AMONG FEMALES 15-19 YEARS, ARIZONA, 2004-2014	
Figure 15	10
BIRTH RATES FOR TEENAGERS 15-19 YEARS, NATIONALLY AND IN ARIZONA, 2004-2014	
Figure 16	10
BIRTH RATES FOR HISPANIC OR LATINO TEENAGERS 15-19 YEARS, NATIONALLY AND IN ARIZONA, 2004-2014	

List of Tables

Table 1	12
PREGNANCIES AND PREGNANCY OUTCOME BY AGE GROUP AND YEAR, FEMALES 19 OR YOUNGER, ARIZONA, 2004-2014	
Table 2	13
PREGNANCY RATES BY PREGNANCY OUTCOME, AGE GROUP, AND YEAR, FEMALES 19 OR YOUNGER, ARIZONA, 2004-2014	
Table 3	14
LIVE BIRTHS TO FEMALES 19 OR YOUNGER BY AGE GROUP, RACE/ETHNICITY, AND YEAR, ARIZONA, 2004-2014	
Table 4	15
ABORTIONS TO FEMALES 19 OR YOUNGER BY AGE GROUP, RACE/ETHNICITY, AND YEAR, ARIZONA, 2004-2014	
Table 5	16
NUMBER OF PREGNANCIES BY PREGNANCY OUTCOME, RACE/ETHNICITY, AND YEAR AMONG FEMALES AGE 17 OR YOUNGER WITH RATES, ARIZONA, 2004-2014	
Table 6	17
NUMBER OF PREGNANCIES BY PREGNANCY OUTCOME, RACE/ETHNICITY, AND YEAR AMONG FEMALES 15-17 YEARS OLD WITH RATES, ARIZONA, 2004-2014	
Table 7	18
NUMBER OF PREGNANCIES BY PREGNANCY OUTCOME, RACE/ETHNICITY, AND YEAR AMONG FEMALES 18-19 YEARS OLD WITH RATES, ARIZONA, 2004-2014	
Table 8	19
NUMBER OF PREGNANCIES BY PREGNANCY OUTCOME, RACE/ETHNICITY, AND YEAR AMONG FEMALES 19 OR YOUNGER WITH RATES, ARIZONA, 2004-2014	
Table 9	20
TRENDS IN PREGNANCY RATES BY COUNTY OF RESIDENCE AMONG FEMALES 10-17 YEARS, 18-19 YEARS, AND 19 YEARS OR YOUNGER, ARIZONA, 2004-2014	
Table 10	21
LIVE BIRTHS TO FEMALES 19 OR YOUNGER AS A PERCENTAGE OF TOTAL LIVE BIRTHS BY AREA, RACE/ETHNICITY, AND YEAR, ARIZONA, 2004-2014	
Table 11	22
BIRTH RATES BY AGE GROUP FOR FEMALES 19 OR YOUNGER, ARIZONA AND UNITED STATES, 2004-2014	
Table 12	23
REPEAT PREGNANCIES AMONG TEENAGE MOTHERS GIVING BIRTH BY AGE AND YEAR, ARIZONA, 2004-2014	
Table 13	24
CUMULATIVE NUMBER OF MOTHERS WHO WERE 19 OR YOUNGER IN ARIZONA IN 2014	
Table 14	25
TRENDS IN TEEN PREGNANCY RATES BY RACE/ETHNICITY AND AGE GROUP, ARIZONA, 2004-2014	
Table 15	26
TRENDS IN SEXUALLY TRANSMITTED INFECTIONS BY AGE GROUP AND YEAR AMONG FEMALES 10-19 YEARS, ARIZONA, 2004-2014	
Table 16	27
TRENDS IN THE INCIDENCE RATES OF SEXUALLY TRANSMITTED INFECTIONS BY AGE GROUP AND YEAR AMONG FEMALES 10-19 YEARS, ARIZONA, 2004-2014	
Table 17	28
PREGNANCIES AND PREGNANCY RATES OF FEMALES 19 OR YOUNGER BY COUNTY OF RESIDENCE, ARIZONA, 2014	
Table 18	29
BIRTHS AND BIRTH RATES, FEMALES 19 OR YOUNGER BY COUNTY OF RESIDENCE, ARIZONA, 2014	
Table 19	30
PREGNANCY RATES AND NUMBER OF LIVE BIRTHS, FETAL DEATHS, AND ABORTIONS TO TEENS BY INDIVIDUAL AGE, ARIZONA, 2014	
Table 20	31
BIRTHS TO FEMALES 19 OR YOUNGER BY AGE AND COUNTY OF RESIDENCE, ARIZONA, 2014	
Table 21	32
ABORTIONS TO FEMALES 19 OR YOUNGER BY AGE AND COUNTY OF RESIDENCE, ARIZONA, 2014	

List of Tables (continued)

Table 22	33
SOURCES OF PAYMENT FOR LABOR AND DELIVERY, FEMALES 19 OR YOUNGER BY AGE, AND COUNTY OF RESIDENCE, ARIZONA, 2014	
Table 23	34
SOURCES OF PAYMENT FOR LABOR AND DELIVERY, FEMALES 19 OR YOUNGER BY AGE GROUP, ARIZONA, 2014	
Table 24	35
TEENAGE BIRTHS BY NUMBER OF PREVIOUS PREGNANCIES BY AGE GROUP, ARIZONA, 2014	
Table 25	35
TEENAGE BIRTHS BY MARITAL STATUS AND AGE GROUP, ARIZONA, 2014	
Table 26	35
TEENAGE BIRTHS BY MOTHER'S EDUCATION AND AGE GROUP, ARIZONA, 2014	
Table 27	36
TEENAGE BIRTHS BY TRIMESTER OF ENTRY INTO PRENATAL CARE AND AGE GROUP, ARIZONA, 2014	
Table 28	36
TEENAGE BIRTHS BY NUMBER OF PRENATAL VISITS AND AGE GROUP, ARIZONA, 2014	
Table 29	37
TOBACCO AND/OR ALCOHOL USE DURING PREGNANCY AMONG FEMALES 19 OR YOUNGER BY AGE GROUP, ARIZONA, 2014	
Table 30	38
RISK FOR LOW-BIRTHWEIGHT (LBW) BIRTHS BY SELECTED CHARACTERISTICS OF FEMALES 19 OR YOUNGER, ARIZONA, 2014	
Table 31	39
POPULATION OF FEMALES 19 OR YOUNGER, NUMBER OF PREGNANCIES AND PREGNANCY RATES BY AGE GROUP, AND RACE/ETHNICITY, ARIZONA, 2014	
Table 32	40
POPULATION OF FEMALES 19 OR YOUNGER BY COUNTY OF RESIDENCE, ARIZONA, 2014	
Appendix	41
HOW TO COMPUTE THE RATES OF FIRST AND REPEAT CHILDBEARING	

PURPOSE

This report is the annual update of information about pregnancies among females under age 20. The data for 2014 is placed in a temporal context by comparing it with the data from the preceding years. Earlier reports are available online at <http://www.azdhs.gov/plan/report/tp/index.php>.

METHODS AND SOURCES

In this report, pregnancies are measured as the sum of three components: live births, fetal deaths (or stillbirths), and reported abortions to Arizona resident women, unless otherwise specified. Not included are spontaneous fetal losses that occur at less than 20 weeks of gestation. Induced terminations of pregnancy do not include those performed out-of-state to Arizona residents, since they are not reported in Arizona. Pregnancy statistics for Arizona are not available on a sub-county level.

Teens are defined as 10-14 year old preadolescents and adolescents 15-19 years of age. Where possible, the data presented distinguishes 18-19 year old teenagers from those aged 15-17 and girls less than 15 years of age.

The primary source documents for the data are the certificates of live births, certificates of fetal deaths, and reports of induced terminations of pregnancy filed with the Arizona Department of Health Services.

The population denominators for Arizona's resident females used to calculate rates for 2003-2009 and 2011-2014 are population estimates of Arizona resident females aged 10-19 years. The 2010 denominators are the actual census enumerations from the U.S. Census Bureau. Detailed information about the assumptions and specific data sources is available online at <http://www.azdhs.gov/plan/menu/info/pop/index.php>.

The 2014 Teenage Pregnancy report suppresses information in tables with small cell sizes. To protect the anonymity of the individuals included in this report, cells in tables with five or fewer observations are denoted by an asterisk (*), cells containing rates based on counts of five or fewer are denoted by a double-asterisk (**), and cells containing sums based on addends of five or fewer are rounded to the nearest tens-unit and denoted by a dagger (†).

DATA ORGANIZATION

Tables 1-14 present annual numbers and rates of pregnancy, fertility, and abortion by year from 2004 to 2014 for Arizona teens. Information is presented for specific age groups and by race/ethnicity. Temporal trends and changes may be assessed from this data. Proportional contribution of teen births to all births is shown in Table 10 by area of residence and race/ethnic group in Arizona from 2004 to 2014. Table 11 compares birth rates in Arizona to those in the United States. The annual numbers of repeat pregnancies among teenage mothers are shown by age and year from 2004 to 2014 in Table 12.

Table 14 presents teen pregnancy rates by race/ethnicity and age group by year from 2004 to 2014. Table 15 provides information about the incidence of sexually transmitted infections among females 10-14 and 15-19 years old in Arizona in 2004-2014. Table 16 shows the incidence rates by year from 2004 to 2014.

Frequency counts, proportions, and rates in Tables 17-32 all apply to the 2014 data. Tables 17-18 and 20-22 provide data by county of residence. Table 19 presents pregnancy rates by single year of age among females 19 and younger. Live births to teenage mothers are also reported in Tables 23-30 by source of payment for labor and delivery, previous pregnancies, marital status, education, trimester of entry into prenatal care, number of prenatal visits, tobacco use during pregnancy, and risk for low-birthweight by selected characteristics. The 2014 population denominators for Arizona resident females by age group and race/ethnicity, as well as by age group and county of residence, are presented in Table 31 and Table 32. The *Appendix* demonstrates "How to compute the rates of first and repeat childbearing" using the annual data for 2004-2014.

COMPARATIVE NATIONAL AND STATE DATA

Timely, comparable, and reliable teen pregnancy statistics for other States and the Nation provide meaningful comparisons to place Arizona's teenage birth experiences in context. The Center for Disease Control (CDC) provides a useful source of information on national pregnancy outcomes. The most recent national abortion data provided by the CDC available is for 2012 and the most recent fetal death data distributed by the CDC is available for 2013. Another source of national data on reproductive health is the Alan Guttmacher Institute. The report, "**U.S. Teenage Pregnancies, Births and Abortions, 2010: National Trends by Age, Race and Ethnicity**" was published by the Alan Guttmacher Institute in February 2014. The authors combine the complete count of births provided by every state to the NCHS with the estimated numbers of abortions, early miscarriages, and fetal deaths. The number of abortions is estimated from surveys the Alan Guttmacher Institute conducts of known abortion providers (i.e. these data are by the place of occurrence and not by the woman's place of residence). The fetal loss estimates – including early miscarriages before 20 weeks of gestation (and estimated as 20% of live births plus 10% of abortions) - are from pregnancy history information collected by the National Survey of Family Growth (NSFG). Unlike vital statistics reports of fetal losses occurring at gestations of 20 weeks or more, NSFG include all gestations. Since the majority of fetal losses occur early in pregnancy before the reporting requirements for fetal deaths are in effect, their inclusion dramatically raises both the fetal loss rate and the pregnancy rate. The National Survey of Family Growth data are not state-specific. The pregnancy rates for Arizona teens cannot be compared with the rates for their peers nationally.

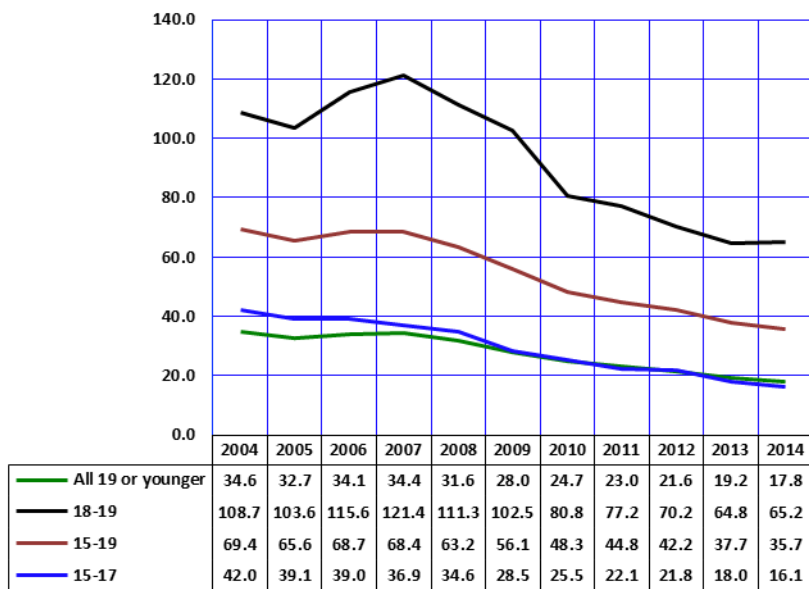
No comparable state-by-state teen pregnancy data for 2004 – 2014 are available at this time.

KEY FINDINGS

The following section presents some illustrative findings contained in the figures and tables of the report. It is not intended to be an exhaustive analysis of the tabulated data.

- **In 2014, the pregnancy rate of 17.8 pregnancies per 1,000 females 19 years or younger was 48.6 percent lower than the rate of 34.6 per 1,000 in 2004. The teen pregnancy rate of 17.8 per 1,000 females 19 years or younger was the lowest teen pregnancy rate since at least 1983.**
- **It is only since 2008 that the reduction in the number of teen pregnancies was accompanied by an equally impressive decline in pregnancy rates.**
- **Historically, the declines in teenage pregnancy have been steeper for younger than for older teenagers, but recently are becoming more closely aligned. The rate for teenagers 15-17 years dropped steeply by 61.7 percent from 42.0 per 1,000 in 2004 to 16.1 in 2014. The rate for older teenagers (aged 18-19 years) fell by 40.1 percent from 108.7 per 1,000 in 2004 to 65.2 per 1,000 in 2014.**
- **The 2014 teen pregnancy rate of 17.8 per 1,000 was based on 7,924 pregnancies occurring among 445,214 females aged 10-19 years. The number of 7,924 teen pregnancies in 2014 was 9.1 percent lower than 2013 and was the lowest number of teen pregnancies since 1984.**
- **From 2007 to 2014, the number of teen pregnancies declined most among American Indians (53.1 percent), followed by declines among Hispanic or Latino teens (48.9 percent), and White non-Hispanic teens (45.0 percent).**
- **In 2014, Hispanic or Latino females accounted for 55.1 percent of all pregnancies in this age group, followed by White non-Hispanics (28.5 percent).**
- **In each year from 2004 to 2014, the pregnancy rates of Hispanic or Latino females were consistently greater than the average rates for all females 19 years or younger in Arizona. In 2014, the Hispanic rate exceeded the average rate for all groups by 42.7 percent.**
- **If the 2014 "risk of pregnancy" for Asian teens (i.e., their pregnancy rate of 5.5 per 1,000), were to be applied to all Arizona females 19 years or younger, it would reduce the number of Arizona teen pregnancies from 7,924 to just 2,449 ((5.5 per 1,000) * 445,214).**
- **The first birth rate for childless teenagers has dropped 47.5 percent from 48.6 first-time births per 1,000 females 15-19 years old in 2004 to 25.5 per 1,000 in 2014.**
- **The repeat birth rates for teenagers who had already had a child decreased by 20.2 percent from 186.4 in 2004 to 148.8 per 1,000 females 15-19 years old in 2014 who had a previous birth.**
- **Unwed mothers have accounted for an increasing annual proportion of births throughout the 1990s and 2000s. In 2014, non-marital births accounted for 89.1 percent of births to mothers 19 years or younger.**
- **The total number of births to mothers 19 years or younger decreased by 44.2 percent from 11,863 in 2004 to 6,623 in 2014. In contrast, the proportional share of births paid for by the Arizona Health Care Cost Containment System (AHCCCS, the State's Medicaid program) increased from 79.5 percent in 2004 to 83.7 percent in 2014.**

Figure 1
Pregnancy Rates by Age Group and Year among Females 19 or Younger, Arizona, 2004-2014

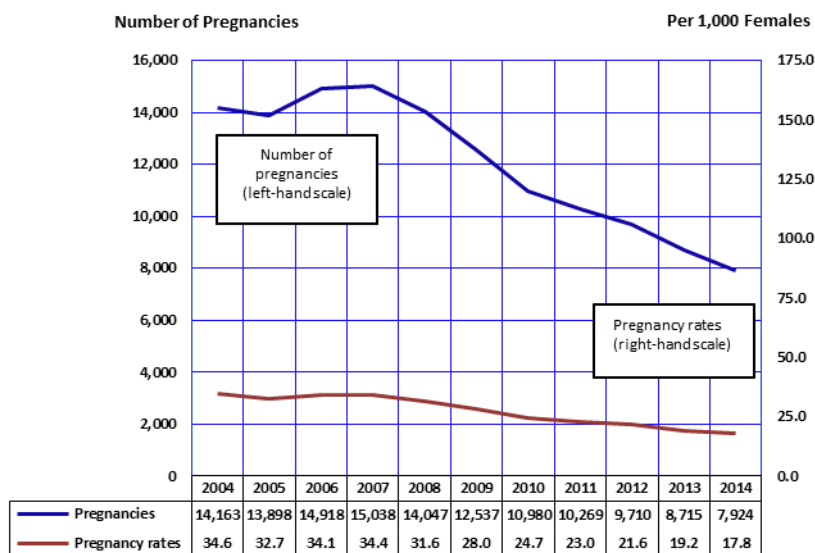


Note: All rates are per 1,000 females in specified group.

Teenage pregnancy rates dropped 48.6 percent overall from 2004 to 2014. (Figure 1, Table 2). The declines in teenage pregnancy have been much steeper for younger than for older teenagers. The rate for teenagers 15-17 years dropped steeply by 61.7 percent from 42.0 per 1,000 in 2004 to 16.1 in 2014. The rate for older teenagers (aged 18-19 years) fell by 40.1 percent from 108.7 per 1,000 in 2004 to 65.2 per 1,000 in 2014.

From 2007 to 2014, birth rate of teenagers 19 years old or younger declined, fetal losses rate fell and remained pretty stable at 0.1 per 1,000 females, while the abortion rate increased from 2010 to 2011 and returned to 3.4 per 1,000 females in 2012 then declined at 2.8 per 1,000 females in 2014 (Table 1). The increase in the teenage abortion rate from 2010 to 2011 is likely attributable to changes in abortion reporting requirements that took effect in 2011.

Figure 2
Trends in the Number of Pregnancies and Pregnancy Rates among Females 19 or Younger, Arizona, 2004-2014



Note: Pregnancy rate = the number of pregnancies per 1,000 females in specified group.

Trends in the number of pregnancies to teenage women do not always parallel the pregnancy rate. The teen pregnancy rate measures the proportion of teenagers becoming pregnant in a given year; in other words, the relative "risk for pregnancy" in a population "at risk". The number of pregnancies is, however, also determined by the size of the population "at risk", or in this case by the number of teenage females in the population.

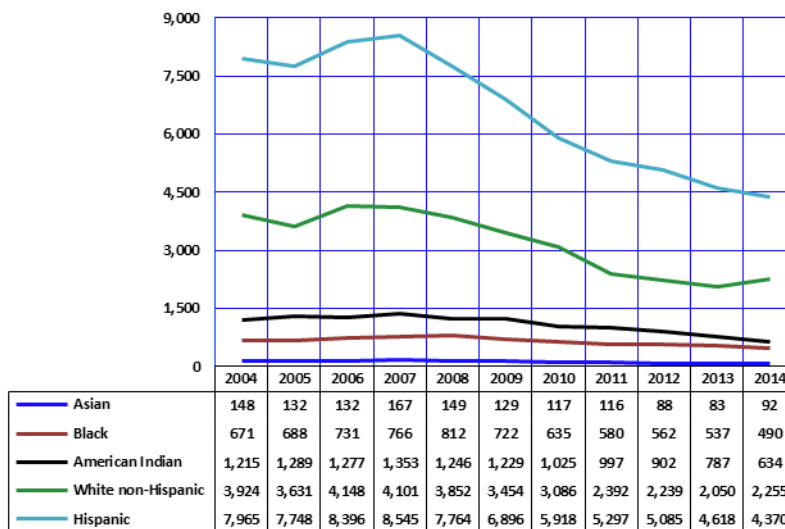
The 2014 teen pregnancy rate of 17.8 per 1,000 was based on 7,924 pregnancies occurring among 445,214 females aged 10-19 years. The number of 7,924 teen pregnancies in 2014 was 9.1 percent lower than 2013 and was the lowest number of teen pregnancies since 1984.

KEY FINDINGS

Figure 3
Trends in the Number of Pregnancies* by Race/Ethnicity among Females 19 or Younger, Arizona, 2004-2014

The number of pregnancies to Hispanic females aged 19 years or younger exceeded the number of pregnancies among white non-Hispanic peers in every year since 1994 (Figure 3 and Table 8 in this report show only the data for 2004-2014). In 2014, Hispanic or Latino females accounted for 55.1 percent of all pregnancies in this age group, followed by White non-Hispanics (28.5 percent). Black or African American, Asian or Pacific Islander, and American Indian females aged 19 years or younger accounted for a larger share of pregnancies in 2014 (15.3 percent) than they did in 2004 (14.4 percent).

From 2007 to 2014, the number of teen pregnancies declined particularly steeply for American Indians (53.1 percent), Hispanic or Latino (48.9 percent), and White non-Hispanic (45.0 percent).



Note: The sum of live births + induced abortions + spontaneous fetal deaths.

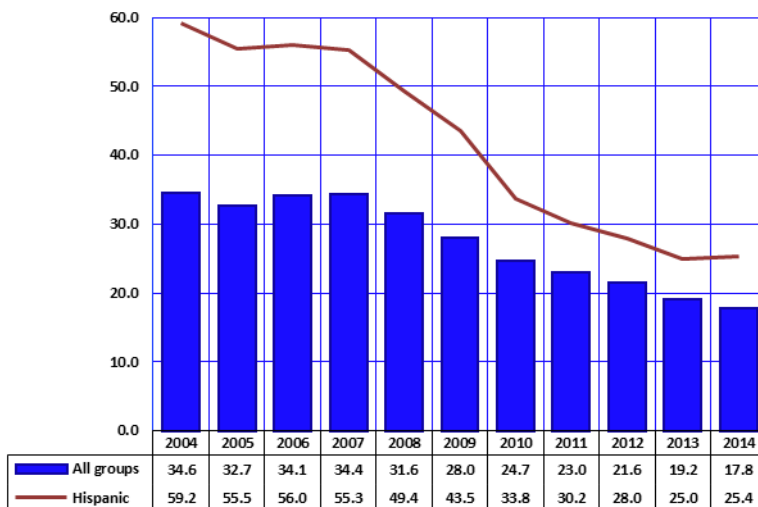
Figure 4
Comparison of Pregnancy Rates by Year among Hispanic or Latinos and all Females 19 or Younger, Arizona, 2004-2014

The teen pregnancy rates for all race and ethnic groups were lower in 2014 than in 2004 (Figure 1). However, the temporal trends in annual teen pregnancy rates differed considerably by race/ethnicity.

Figures 4, 5, 6, 7, and 8 reveal race/ethnicity-specific trends in teen pregnancy rates in Arizona in 2004-2014.

From 2004 to 2014, the teenage pregnancy rate for Hispanic or Latino women declined more than 50 percent (57.1 percent), with the majority of the decline occurring between 2007 and 2014 (Figure 4).

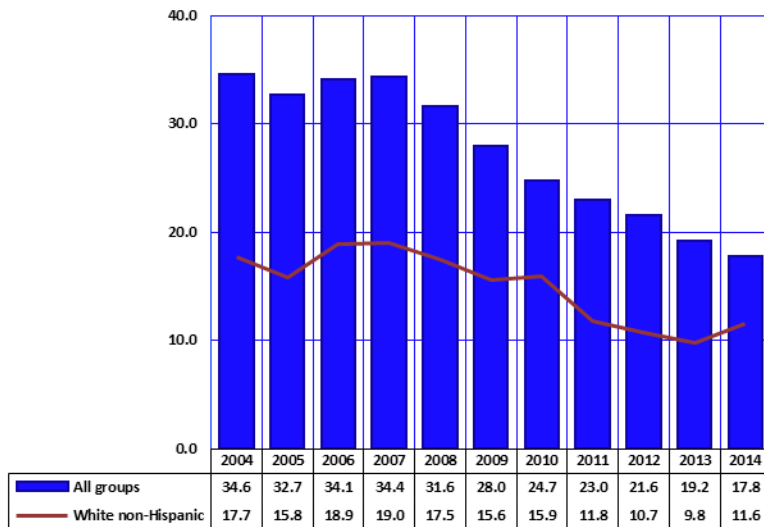
In each year from 2004 to 2014, the pregnancy rates of Hispanic or Latino females were consistently greater than the average rates for all females 19 years or younger in Arizona. In 2014, the Hispanic rate exceeded the average rate for all groups by 42.7 percent.



Note: All rates are per 1,000 females in specified group.

KEY FINDINGS

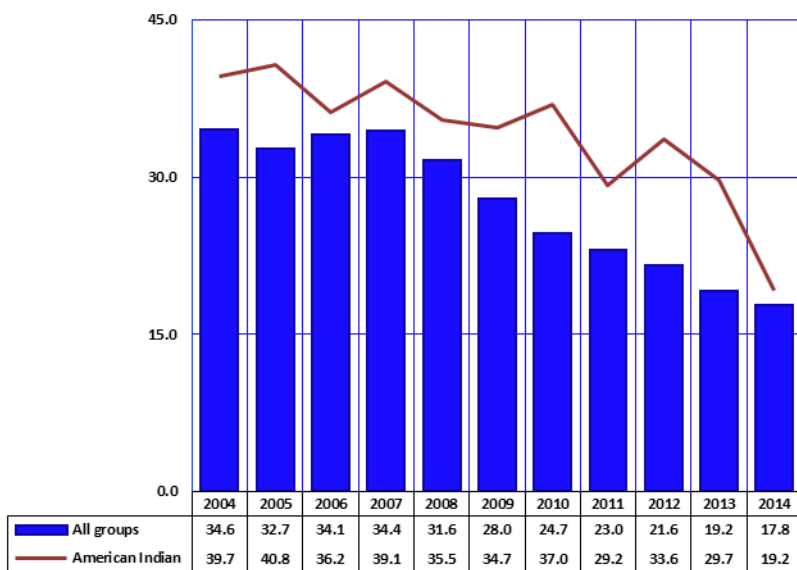
Figure 5
Comparison of Pregnancy Rates by Year among White non-Hispanics
and all Females 19 or Younger, Arizona, 2004-2014



The pregnancy rate for White non-Hispanics has substantially declined from 2004 to 2014 (34.5 percent), save for an increase from 2006 to 2007 (**Figure 5**). In each year from 2004 to 2014, the pregnancy rates for White non-Hispanic females were lower than the average rates for all females 19 years or younger in Arizona.

Note: All rates are per 1,000 females in specified group.

Figure 6
Comparison of Pregnancy Rates by Year among American Indian
or Alaska Natives and all Females 19 or Younger, Arizona, 2004-2014



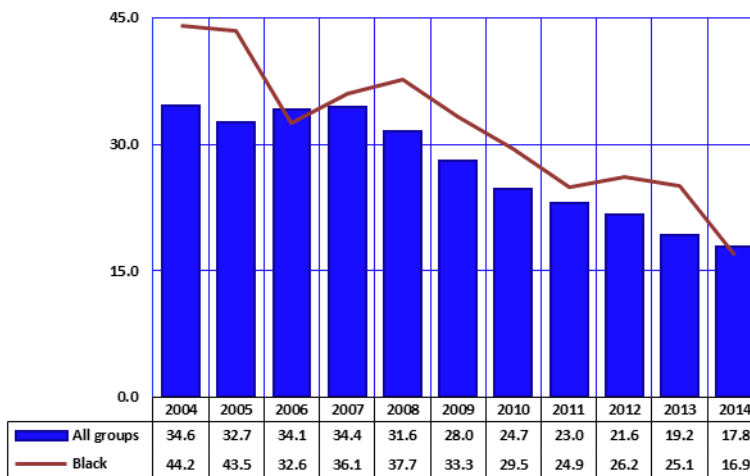
The pregnancy rate among American Indian females 19 years or younger varied somewhat erratically from 2004 to 2014, showing a 21.1 percent decrease from 2010 to 2011, a 15.1 percent increase from 2011 to 2012, and a decline from 2013 to 2014 (**Figure 6**). The American Indian teenage pregnancy rate was higher than the average for all groups from 2004 to 2014.

Note: All rates are per 1,000 females in specified group.

KEY FINDINGS

Figure 7
Comparison of Pregnancy Rates by Year among Black or African Americans and all Females 19 or Younger, Arizona, 2004-2014

Pregnancy rates for Black or African American females 19 years or younger decreased from 44.2 per 1,000 in 2004 to 16.9 per 1,000 in 2014 (Figure 7). Excluding 2006 and 2014, the pregnancy rates for Black or African American teenagers exceeded the pregnancy rate for all groups.

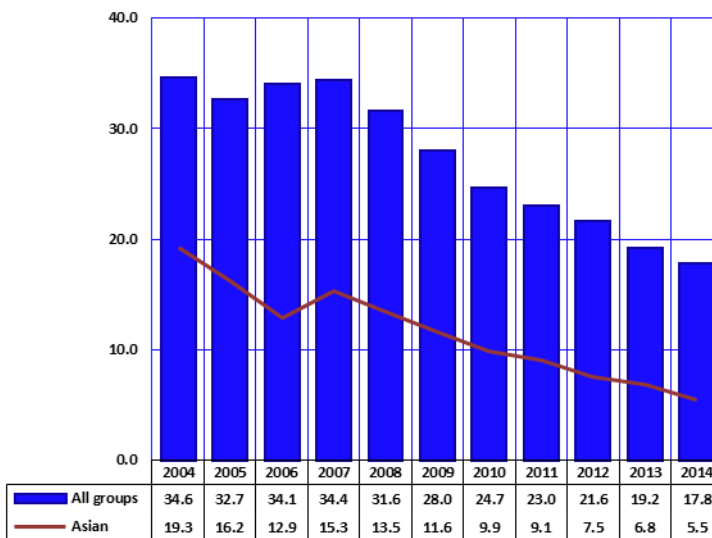


Note: All rates are per 1,000 females in specified group.

Figure 8
Comparison of Pregnancy Rates by Year among Asian or Pacific Islanders and all Females 19 or Younger, Arizona, 2004-2014

In each year from 2004 to 2014, the pregnancy rates for Asian or Pacific Islander females 19 years or younger were substantially lower than the average rates among all females 19 years or younger in Arizona (Figure 8). In 2014, the Asian rate (5.5 per 1,000) was 69.1 percent lower than the rate for all groups (17.8 per 1,000).

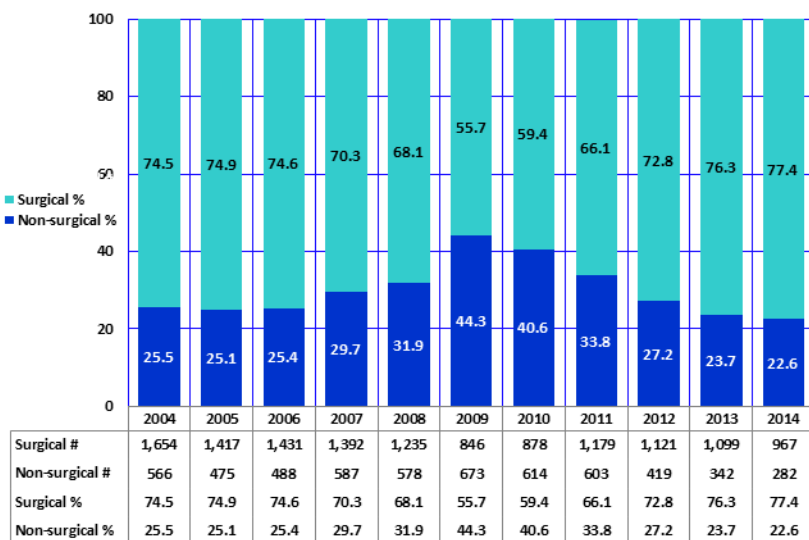
If the 2013 "risk for pregnancy" of Asian teens (i.e., their pregnancy rate) applied to all Arizona females 19 years or younger, the number of teen pregnancies in the State would have been reduced from 7,924 to approximately 2,449 (5.5 per 1,000) * 445,214).



Note: All rates are per 1,000 females in specified group.

KEY FINDINGS

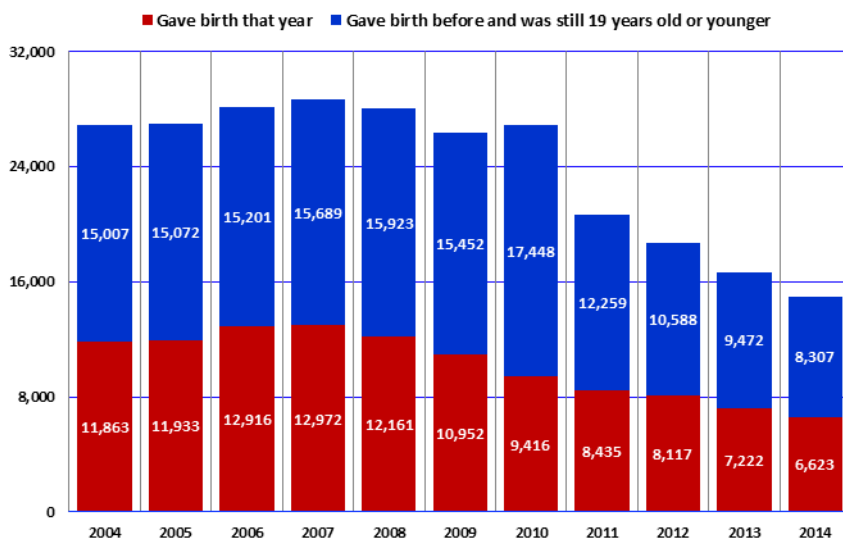
Figure 9
Proportional Contribution of Surgical and Non-Surgical Abortions
by Year among Females 19 or Younger, Arizona, 2004-2014



The proportion of non-surgical abortions to females 19 years or younger decreased from 40.6 percent in 2010 to 22.6 percent in 2014, indicating the proportion of surgical abortions increased 10.1 percent over that period (**Figure 9**).

Note: Non-surgical: Mifepristone, Methotrexate, RU486, etc.

Figure 10
Cumulative Number of Mothers who were 19 or Younger
in Arizona by Year, 2004-2014



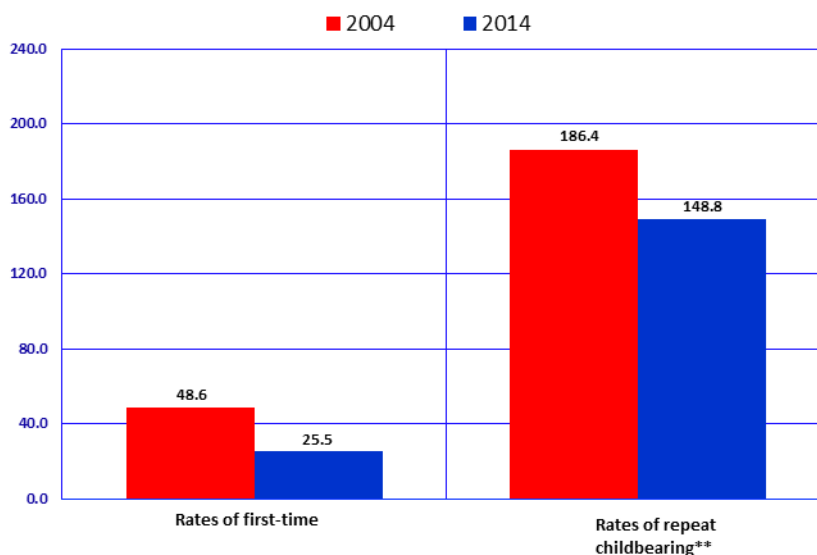
There were approximately 14,930 mothers under the age of 20 in Arizona in 2014. Among them there were the 6,623 who gave birth in 2014 and the 8,307 who gave birth prior to 2014 and were still 19 years old or younger in 2014 (**Figure 10, Table 13**). The cumulative number of mothers who were 19 years or younger in Arizona in 2014 decreased by 44.4 percent from 26,864 in 2010.

KEY FINDINGS

Figure 11
Rates of First and Repeat Births to Females 15-19 Years, Arizona, 2004 and 2014

The first birth rate for childless teenagers has dropped 47.5 percent from 48.6 first-time births per 1,000 females 15-19 years old in 2004 to 25.5 per 1,000 in 2014 (**Figure 12**).

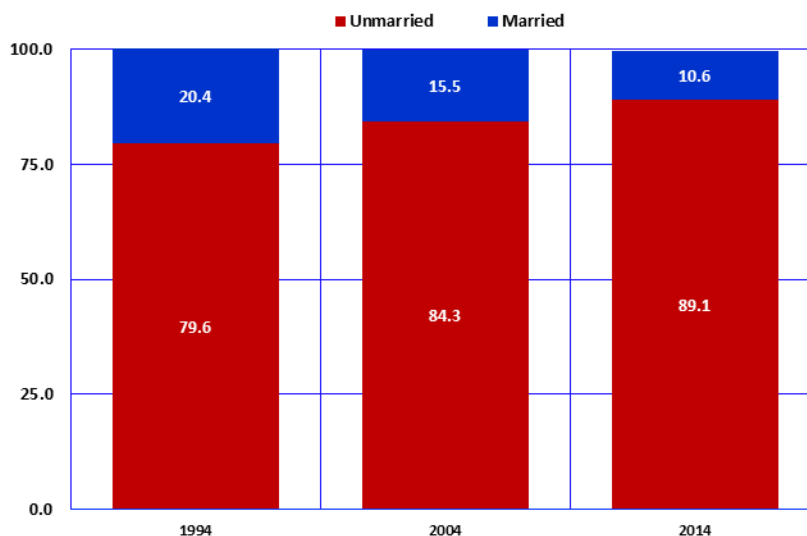
The repeat birth rates for teenagers who had already had a child decreased by 20.2 percent from 186.4 in 2004 to 148.8 per 1,000 females 15-19 years old in 2014 who had a previous birth (**Figure 12**).



Notes: * Number of first births per 1,000 females 15-19 years old who have not had a birth; ** Number of repeat births per 1,000 females 15-19 years old who have had a previous birth; See Appendix "How to compute rates of first and repeat childbearing."

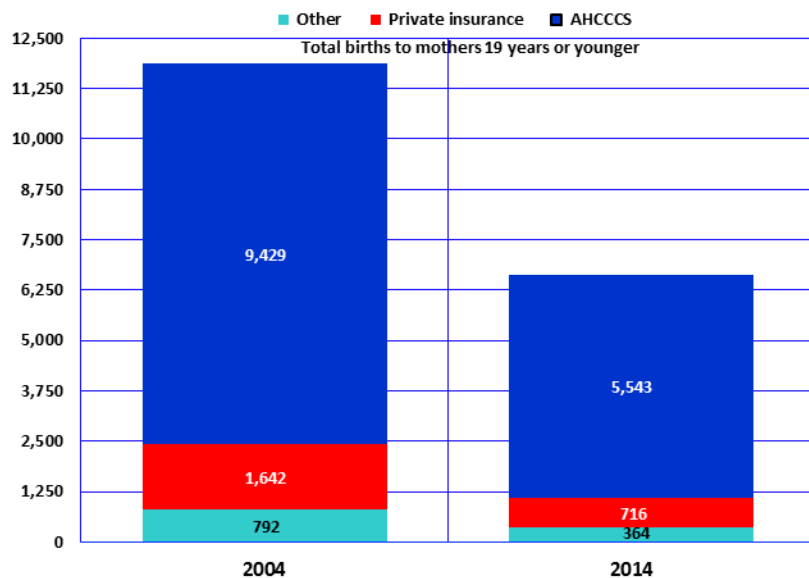
Figure 12
Births to Mothers 19 or Younger by Marital Status, Arizona, 1994, 2004, and 2014

Unwed mothers have accounted for an increasing annual proportion of births throughout the 1990s and 2000s. Two decades ago, more than 7 out of 10 teenage mothers were unmarried (**Figure 13**). In 2014, nonmarital births accounted for 89.1 percent of births to mothers 19 years or younger.



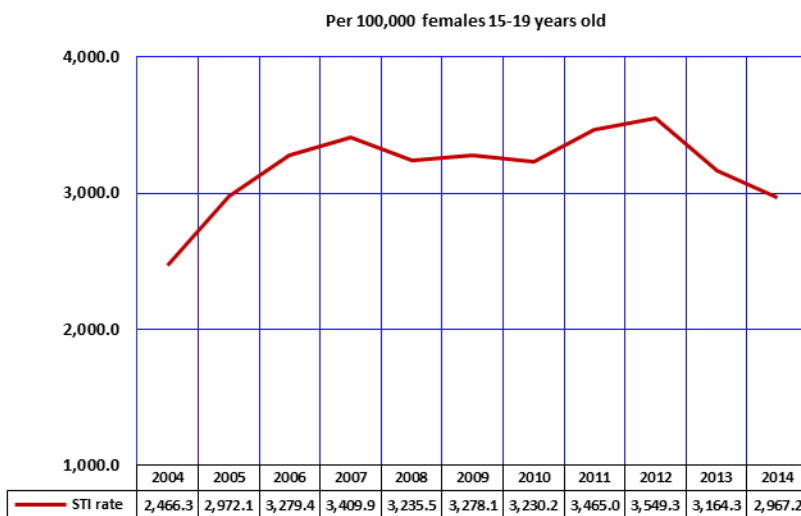
KEY FINDINGS

Figure 13
Number of Births to Mothers 19 or Younger by Payee, Arizona, 2004 and 2014



The total number of births to mothers 19 years or younger decreased by 44.2 percent from 11,863 in 2004 to 6,623 in 2014 (**Table 1**). In contrast, the proportional share of births paid for by the Arizona Health Care Cost Containment System (AHCCCS, the State's Medicaid program) increased from 79.5 percent in 2004 to 83.7 percent in 2014 (**Figure 13**).

Figure 14
Trends in the Incidence of Sexually Transmitted Infections* among Females 15-19 Years, Arizona, 2004-2014



In each year from 2007 to 2012, the total number of sexually transmitted infections (STI) among females aged 19 or younger exceeded 7,300, but fell to 6,723 in 2014 (**Table 15**). Even with the recent decline, the rate of STI among females 15-19 years old increased 20.3 percent from 2,466.3 cases per 100,000 in 2004 to a rate of 2,967.2 per 100,000 in 2014.

These STIs include *chlamydia* and *syphilis*. *Chlamydia* can cause sterility in the affected mother and eye infections and pneumonia in the newborn. *Syphilis* can cause blindness and maternal and/or infant death.

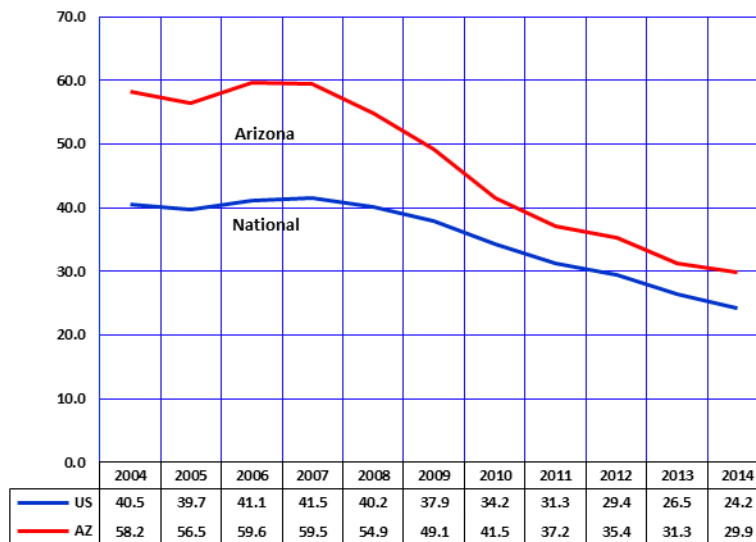
Notes: * The sum of annually reported cases of gonorrhea, chlamydia, and early syphilis.
 Source: Bureau of Epidemiology and Disease Control Services, Office of Infectious Disease Services.

KEY FINDINGS

Figure 15
Birth Rates for Teenagers 15-19 Years, Nationally and in Arizona, 2004-2014

In each year from 2004 to 2014, birth rates for Arizona teenagers 15-19 years old exceeded the rates of their national peers (**Figure 15, Table 11**).

In Arizona, Hispanic or Latino females 15-19 years old, a high-fertility group, accounted for 38.0 percent of females aged 15-19 years in 2014. A high proportional representation of Hispanic or Latino females in Arizona puts upward pressure on the overall teen birth rate.

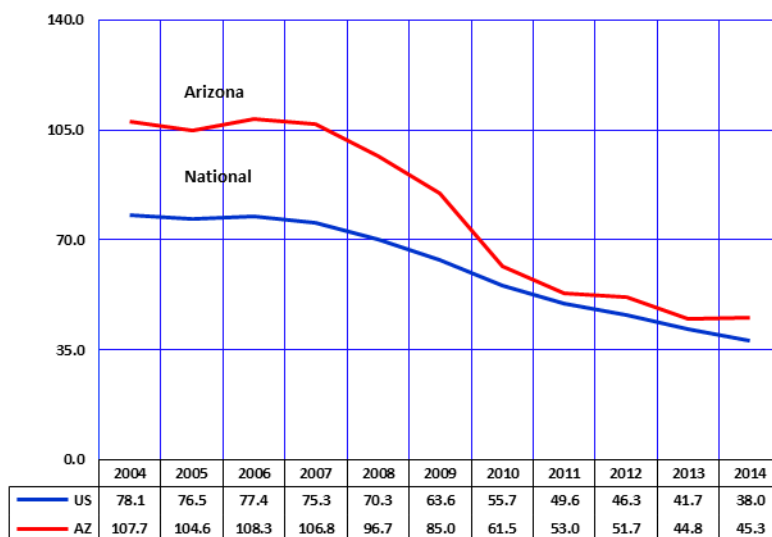


Note: The number of births per 1,000 females 15-19 years old.

Figure 16
Birth Rates for Hispanic or Latino Teenagers 15-19 Years, Nationally, and in Arizona, 2004-2014

In 2014, Hispanics or Latinos aged 15-19 years disproportionately accounted for 57.0 percent of births to mothers in this age group in Arizona (3,790 out of 6,623; see **Table 6** and **Table 7**).

Historically the birth rates among Hispanic or Latino teenagers have been higher in Arizona than nationally. In 2014, the national birth rate for Hispanic teenagers decreased 8.9 percent from 2013, making the Arizona's rate 19.2 percent higher national rate in 2014.



Note: The number of births per 1,000 females 15-19 years old.

TEENAGE PREGNANCY, ARIZONA, 2004-2014

DATA TABLES

**TABLE 1
PREGNANCIES AND PREGNANCY OUTCOME BY AGE GROUP AND YEAR,
FEMALES 19 OR YOUNGER, ARIZONA, 2004-2014**

Pregnancy outcome by year	Total, females 19 years or younger	Under 15 years	15-19 years old		
			Total, 15-19 years	15-17 years	18-19 years
ALL PREGNANCIES					
2004	14,163	233	13,930	4,955	8,975
2005	13,898	239	13,659	4,790	8,869
2006	14,918	242	14,676	5,105	9,571
2007	15,038	325	14,713	4,975	9,738
2008	14,047	230	13,817	4,740	9,077
2009	12,537	156	12,381	3,945	8,436
2010	10,980	150	10,830	3,363	7,467
2011	10,269	150	10,119	2,939	7,180
2012	9,710	116	9,594	2,860	6,734
2013	8,715	91	8,624	2,385	6,239
2014	7,924	68	7,856	2,125	5,731
LIVE BIRTHS					
2004	11,863	188	11,675	4,227	7,448
2005	11,933	185	11,748	4,179	7,569
2006	12,916	170	12,746	4,450	8,296
2007	12,972	180	12,792	4,361	8,431
2008	12,161	161	12,000	4,151	7,849
2009	10,952	132	10,820	3,501	7,319
2010	9,416	105	9,311	2,910	6,401
2011	8,435	101	8,334	2,447	5,887
2012	8,117	67	8,050	2,430	5,620
2013	7,222	71	7,151	1,985	5,166
2014	6,623	46	6,577	1,770	4,807
ABORTIONS					
2004	2,220	44	2,176	703	1,473
2005	1,892	54	1,838	582	1,256
2006	1,919	69	1,850	624	1,226
2007	1,979	142	1,837	576	1,261
2008	1,813	67	1,746	567	1,179
2009	1,519	24	1,495	418	1,077
2010	1,512	44	1,468	435	1,033
2011	1,785	49	1,736	478	1,258
2012	1,539	48	1,491	414	1,077
2013	1,441	20	1,421	382	1,039
2014	1,249	22	1,227	330	897
FETAL LOSSES					
2004	80†	*	79	25	54
2005	73	0	73	29	44
2006	80†	*	80	31	49
2007	90†	*	84	38	46
2008	70†	*	71	22	49
2009	66	0	66	26	40
2010	50†	*	51	18	33
2011	49	0	49	14	35
2012	50†	*	53	16	37
2013	52	0	52	18	34
2014	52	0	52	25	27

Notes: * Cell suppressed due to non-zero count less than 6; † Sum rounded to nearest tens unit due to non-zero addend less than 6.

TABLE 2
PREGNANCY RATES^a BY PREGNANCY OUTCOME, AGE GROUP, AND YEAR,
FEMALES 19 OR YOUNGER, ARIZONA, 2004-2014

Pregnancy outcome by year	Total, females 19 years or younger	Under 15 years	15-19 years old		
			Total, 15-19 years	15-17 years	18-19 years
ALL PREGNANCIES					
2004	34.6	1.1	69.4	42.0	108.7
2005	32.7	1.1	65.6	39.1	103.6
2006	34.1	1.1	68.7	39.0	115.6
2007	34.4	1.5	68.4	36.9	121.4
2008	31.6	1.0	63.2	34.6	111.3
2009	28.0	0.7	56.1	28.5	102.5
2010	24.7	0.7	48.3	25.5	80.8
2011	23.0	0.7	44.8	22.1	77.2
2012	21.6	0.5	42.2	21.8	70.2
2013	19.2	0.4	37.7	18.0	64.8
2014	17.8	0.3	35.7	16.1	65.2
LIVE BIRTHS					
2004	29.0	0.9	58.2	35.8	90.2
2005	28.1	0.9	56.5	34.1	88.4
2006	29.6	0.8	59.6	34.0	100.2
2007	29.7	0.8	59.5	32.3	105.1
2008	27.4	0.7	54.9	30.3	96.3
2009	24.4	0.6	49.1	25.3	89.0
2010	21.2	0.5	41.5	22.1	69.2
2011	19.0	0.5	37.2	18.6	63.7
2012	18.0	0.3	35.4	18.5	58.6
2013	15.9	0.3	31.3	15.0	53.6
2014	14.9	0.2	29.9	13.4	54.7
ABORTIONS					
2004	5.4	0.2	10.8	6.0	17.8
2005	4.5	0.2	8.8	4.8	14.7
2006	4.4	0.3	8.7	4.8	14.8
2007	4.5	0.6	8.5	4.3	15.7
2008	4.1	0.3	8.0	4.1	14.5
2009	3.4	0.1	6.8	3.0	13.1
2010	3.4	0.2	6.5	3.3	11.2
2011	4.0	0.2	7.7	3.6	13.5
2012	3.4	0.2	6.6	3.1	11.2
2013	3.2	0.1	6.2	2.9	10.8
2014	2.8	0.1	5.6	2.5	10.2
FETAL LOSSES					
2004	0.2	**	0.4	0.2	0.7
2005	0.2	0.0	0.4	0.2	0.5
2006	0.2	**	0.4	0.2	0.6
2007	0.2	**	0.4	0.3	0.6
2008	0.2	**	0.3	0.2	0.6
2009	0.2	0.0	0.3	0.2	0.5
2010	0.1	**	0.2	0.1	0.4
2011	0.1	0.0	0.2	0.1	0.4
2012	0.1	**	0.2	0.1	0.4
2013	0.1	0.0	0.2	0.1	0.4
2014	0.1	0.0	0.2	0.2	0.3

Notes: ** Cell suppressed due to rate/ratio/percent based on non-zero count less than 6; ^a The number of pregnancies (live births + abortions + fetal deaths) per 1,000 females in specified age group; 0.0: Quantity more than zero but less than 0.05.

**TABLE 3
LIVE BIRTHS TO FEMALES 19 OR YOUNGER BY AGE GROUP, RACE/ETHNICITY,
AND YEAR, ARIZONA, 2004-2014**

Racial/ethnic group and year	Total, females 19 years or younger	Under 15 years	15-19 years old		
			Total, 15-19 years	15-17 years	18-19 years
WHITE NON-HISPANIC					
2004	2,806	17	2,789	747	2,042
2005	2,744	17	2,727	711	2,016
2006	3,209	19	3,190	852	2,338
2007	3,100	26	3,074	779	2,295
2008	2,993	15	2,978	769	2,209
2009	2,715	20	2,695	649	2,046
2010	2,386	12	2,374	541	1,833
2011	2,089	13	2,076	494	1,582
2012	1,977	8	1,969	475	1,494
2013	1,781	8	1,773	365	1,408
2014	1,757	8	1,749	344	1,405
HISPANIC OR LATINO					
2004	7,138	137	7,001	2,779	4,222
2005	7,188	137	7,051	2,721	4,330
2006	7,738	123	7,615	2,923	4,692
2007	7,782	115	7,667	2,892	4,775
2008	7,168	111	7,057	2,724	4,333
2009	6,341	87	6,254	2,253	4,001
2010	5,348	68	5,280	1,859	3,421
2011	4,631	61	4,570	1,467	3,103
2012	4,627	46	4,581	1,528	3,053
2013	4,080	47	4,033	1,244	2,789
2014	3,813	23	3,790	1,115	2,675
BLACK OR AFRICAN AMERICAN					
2004	540	12	528	180	348
2005	569	8	561	199	362
2006	601	7	594	187	407
2007	621	12	609	195	414
2008	656	12	644	203	441
2009	603	6	597	181	416
2010	562	10	552	151	401
2011	561	10	551	152	399
2012	540†	*	539	159	380
2013	507	6	501	122	379
2014	390†	*	389	102	287
AMERICAN INDIAN OR ALASKA NATIVE					
2004	1,142	21	1,121	452	669
2005	1,204	21	1,183	478	705
2006	1,216	19	1,197	430	767
2007	1,285	26	1,259	445	814
2008	1,185	22	1,163	408	755
2009	1,170	17	1,153	394	759
2010	988	14	974	331	643
2011	987	14	973	293	680
2012	890	7	883	251	632
2013	775	8	767	243	524
2014	602	9	593	196	397
ASIAN OR PACIFIC ISLANDER					
2004	90†	*	91	25	66
2005	100†	*	95	28	67
2006	90†	*	91	28	63
2007	103	0	103	31	72
2008	110†	*	112	26	86
2009	90†	*	86	18	68
2010	100†	*	102	23	79
2011	110†	*	109	26	83
2012	80†	*	78	17	61
2013	80†	*	77	11	66
2014	60†	*	56	13	43

Notes: * Cell suppressed due to non-zero count less than 6; † Sum rounded to nearest tens unit due to non-zero addend less than 6.

**TABLE 4
ABORTIONS TO FEMALES 19 OR YOUNGER BY AGE GROUP, RACE/ETHNICITY,
AND YEAR, ARIZONA, 2004-2014**

Racial/ethnic group and year	Total, females 19 years or younger	Under 15 years	15-19 years old		
			Total, 15-19 years	15-17 years	18-19 years
WHITE NON-HISPANIC					
2004	1,095	19	1,076	341	735
2005	867	15	852	278	574
2006	917	28	889	296	593
2007	982	71	911	282	629
2008	841	21	820	266	554
2009	720	11	709	207	502
2010	694	16	678	198	480
2011	289	10	279	80	199
2012	238	6	232	65	167
2013	257	6	251	66	185
2014	488	7	481	133	348
HISPANIC OR LATINO					
2004	784	20	764	247	517
2005	522	21	501	151	350
2006	609	24	585	193	392
2007	710	44	666	210	456
2008	561	34	527	173	354
2009	525	8	517	136	381
2010	532	16	516	151	365
2011	638	17	621	179	442
2012	441	12	429	138	291
2013	509	6	503	136	367
2014	531	7	524	134	390
BLACK OR AFRICAN AMERICAN					
2004	130†	*	124	46	78
2005	110†	*	109	32	77
2006	124	9	115	48	67
2007	136	13	123	42	81
2008	140†	*	138	43	95
2009	110†	*	107	28	79
2010	70†	*	66	24	42
2011	17	0	20†	*	13
2012	10†	*	10†	6	*
2013	20†	*	22	8	14
2014	90†	*	88	34	54
AMERICAN INDIAN OR ALASKA NATIVE					
2004	70†	*	64	17	47
2005	80†	*	72	21	51
2006	60†	*	54	24	30
2007	63	8	55	22	33
2008	50†	*	52	17	35
2009	52	0	52	22	30
2010	40†	*	34	13	21
2011	10†	0	10†	*	*
2012	0†	0	0†	*	*
2013	8	0	10†	*	*
2014	30†	*	20†	*	18
ASIAN OR PACIFIC ISLANDER					
2004	60†	*	55	19	36
2005	35	0	35	10	25
2006	40†	*	37	11	26
2007	60†	*	59	8	51
2008	40†	*	34	12	22
2009	40†	*	39	8	31
2010	14	0	10†	*	9
2011	10†	*	0†	0	*
2012	9	0	10†	*	7
2013	0†	0	0†	*	*
2014	40†	*	34	10	24

Notes: * Cell suppressed due to non-zero count less than 6; † Sum rounded to nearest tens unit due to non-zero addend less than 6.

**TABLE 5
NUMBER OF PREGNANCIES^a BY PREGNANCY OUTCOME, RACE/ETHNICITY, AND YEAR AMONG FEMALES AGED 17 AND YOUNGER
WITH RATES^b, ARIZONA, 2004-2014**

Race/ethnicity Pregnancy outcome	2004	2005	2006	2007	2008	2009	2010	2011	2012	2013	2014	2014 Rates
WHITE^c NON-HISPANIC, total:	1,129	1,028	1,204	1,165	1,074	894	770	600	564	448	496	3.2
Births	764	728	871	805	784	669	553	507	483	373	352	2.3
Abortions	360	293	324	353	287	218	214	90	71	72	140	0.9
HISPANIC OR LATINO, total:	3,198	3,043	3,281	3,286	3,057	2,496	2,106	1,731	1,728	1,443	1,292	9.3
Births	2,916	2,858	3,046	3,007	2,835	2,340	1,927	1,528	1,574	1,291	1,138	8.2
Abortions	267	172	217	254	207	144	167	196	150	142	141	1.0
BLACK OR AFRICAN AMERICAN, total:	241	247	255	268	266	221	189	170 [†]	174	140	145	6.2
Births	192	207	194	207	215	187	161	162	164	128	107	4.6
Abortions	47	37	57	55	48	31	25	*	9	9	36	1.5
AMERICAN INDIAN OR ALASKA NATIVE, total:	495	530	477	504	452	436	361	310 [†]	260 [†]	260 [†]	217	8.2
Births	473	499	449	471	430	411	345	307	258	251	205	7.8
Abortions	18	25	25	30	19	22	15	*	*	*	7	0.3
ASIAN OR PACIFIC ISLANDER, total:	46	39	43	43	41	30	30 [†]	30 [†]	20 [†]	20 [†]	25	1.8
Births	26	29	29	31	27	20	24	28	18	13	14	1.0
Abortions	20	10	14	12	14	9	*	*	*	*	11	0.8
ALL RACIAL/ETHNIC GROUPS^d, total:	5,188	5,029	5,347	5,300	4,970	4,101	3,513	3,089	2,976	2,476	2,193	6.1
Births	4,415	4,364	4,620	4,541	4,312	3,633	3,015	2,548	2,497	2,056	1,816	5.1
Abortions	747	636	693	718	634	442	479	527	463	402	352	1.0
Pregnancy rate, total:	15.9	14.8	15.1	14.8	13.7	11.2	10.0	8.7	8.4	6.9	6.1	
Fertility rate^e	13.5	12.9	13.0	12.7	11.9	9.9	8.6	7.2	7.1	5.8	5.1	
Abortion rate	2.3	1.9	2.0	2.0	1.7	1.2	1.4	1.5	1.3	1.1	1.0	

Notes: * Cell suppressed due to non-zero count less than 6; ** Cell suppressed due to rate/ratio/percent based on non-zero count less than 6; [†] Sum rounded to nearest tens unit due to non-zero addend less than 6; ^a Fetal deaths are included in the total counts of pregnancies; ^b All rates per 1,000 females 10-17 years old; ^c Not of Hispanic origin; ^d Includes other and unspecified ethnicity; ^e Number of births per 1,000 females 10-17 years old.

**TABLE 6
NUMBER OF PREGNANCIES^a BY PREGNANCY OUTCOME, RACE/ETHNICITY, AND YEAR AMONG FEMALES 15-17 YEARS OLD
WITH RATES^b, ARIZONA, 2004-2014**

Race/ethnicity Pregnancy outcome	2004	2005	2006	2007	2008	2009	2010	2011	2012	2013	2014	2014 Rates
WHITE^c NON-HISPANIC, total:	1,093	996	1,157	1,067	1,038	863	742	577	549	434	481	8.2
Births	747	711	852	779	769	649	541	494	475	365	344	5.9
Abortions	341	278	296	282	266	207	198	80	65	66	133	2.3
HISPANIC OR LATINO, total:	3,040	2,885	3,131	3,126	2,911	2,401	2,021	1,653	1,670	1,390	1,262	25.2
Births	2,779	2,721	2,923	2,892	2,724	2,253	1,859	1,467	1,528	1,244	1,115	22.3
Abortions	247	151	193	210	173	136	151	179	138	136	134	2.7
BLACK OR AFRICAN AMERICAN, total:	228	234	239	242	248	212	178	160†	166	133	138	15.9
Births	180	199	187	195	203	181	151	152	159	122	102	11.7
Abortions	46	32	48	42	43	28	24	*	6	8	34	3.9
AMERICAN INDIAN OR ALASKA NATIVE, total:	473	505	457	470	428	419	345	300†	250†	250†	210†	21.0
Births	452	478	430	445	408	394	331	293	251	243	196	19.9
Abortions	17	21	24	22	17	22	13	*	*	*	*	**
ASIAN OR PACIFIC ISLANDER, total:	44	38	39	39	38	30†	30†	26	20†	10†	23	4.6
Births	25	28	28	31	26	18	23	26	17	11	13	2.6
Abortions	19	10	11	8	12	*	*	0	*	*	10	2.0
ALL RACIAL/ETHNIC GROUPS^d, total:	4,955	4,790	5,105	4,975	4,740	3,945	3,363	2,939	2,860	2,385	2,125	16.1
Births	4,227	4,179	4,450	4,361	4,151	3,501	2,910	2,447	2,430	1,985	1,770	13.4
Abortions	703	582	624	576	567	418	435	478	414	382	330	2.5
Pregnancy rate, total:	42.0	39.1	39.0	36.9	34.6	28.5	25.5	22.1	21.8	18.0	16.1	
Fertility rate^e	35.8	34.1	34.0	32.3	30.3	25.3	22.1	18.4	18.5	15.0	13.4	
Abortion rate	6.0	4.8	4.8	4.3	4.1	3.0	3.3	3.6	3.1	2.9	2.5	

Notes: * Cell suppressed due to non-zero count less than 6; ** Cell suppressed due to rate/ratio/percent based on non-zero count less than 6; † Sum rounded to nearest tens unit due to non-zero addend less than 6; ^a Fetal deaths are included in the total counts of pregnancies; ^b All rates per 1,000 females 15-17 years old; ^c Not of Hispanic origin; ^d Includes other and unspecified ethnicity; ^e Number of births per 1,000 females 15-17 years old.

**TABLE 7
NUMBER OF PREGNANCIES^a BY PREGNANCY OUTCOME, RACE/ETHNICITY, AND YEAR AMONG FEMALES 18-19 YEARS OLD
WITH RATES^b, ARIZONA, 2004-2014**

Race/ethnicity Pregnancy outcome	2004	2005	2006	2007	2008	2009	2010	2011	2012	2013	2014	2014 Rates
WHITE^c NON-HISPANIC, total:	2,795	2,603	2,944	2,936	2,778	2,560	2,316	1,792	1,675	1,602	1,759	45.5
Births	2,042	2,016	2,338	2,295	2,209	2,046	1,833	1,582	1,494	1,408	1,405	36.4
Abortions	735	574	593	629	554	502	480	199	167	185	348	9.0
HISPANIC OR LATINO, total:	4,767	4,705	5,115	5,259	4,707	4,400	3,812	3,566	3,357	3,175	3,078	91.7
Births	4,222	4,330	4,692	4,775	4,333	4,001	3,421	3,103	3,053	2,789	2,675	79.7
Abortions	517	350	392	456	354	381	365	442	291	367	390	11.6
BLACK OR AFRICAN AMERICAN, total:	430	441	476	498	546	501	446	413	390 [†]	397	345	59.4
Births	348	362	407	414	441	416	401	399	380	379	287	49.4
Abortions	78	77	67	81	95	79	42	13	*	14	54	9.3
AMERICAN INDIAN OR ALASKA NATIVE, total:	720	759	800	849	794	793	664	690 [†]	640 [†]	530 [†]	417	62.7
Births	669	705	767	814	755	759	643	680	632	524	397	59.7
Abortions	47	51	30	33	35	30	21	*	*	*	18	2.7
ASIAN OR PACIFIC ISLANDER, total:	102	93	89	124	108	99	88	90 [†]	68	70 [†]	67	20.3
Births	66	67	63	72	86	68	79	83	61	66	43	13.0
Abortions	36	25	26	51	22	31	9	*	7	*	24	7.3
ALL RACIAL/ETHNIC GROUPS^d, total:	8,975	8,869	9,571	9,738	9,077	8,436	7,467	7,180	6,734	6,239	5,731	65.2
Births	7,448	7,569	8,296	8,431	7,849	7,319	6,401	5,887	5,620	5,166	4,807	54.7
Abortions	1,473	1,256	1,226	1,261	1,179	1,077	1,033	1,258	1,077	1,039	897	10.2
Pregnancy rate, total:	108.7	103.6	115.6	121.4	111.3	102.5	80.8	77.2	70.2	64.8	65.2	
Fertility rate^e	90.2	88.4	100.2	105.1	96.3	89.0	69.2	63.3	58.6	53.6	54.7	
Abortion rate	17.8	14.7	14.8	15.7	14.5	13.1	11.2	13.5	11.2	10.8	10.2	

Notes: * Cell suppressed due to non-zero count less than 6; ** Cell suppressed due to rate/ratio/percent based on non-zero count less than 6; [†] Sum rounded to nearest tens unit due to non-zero addend less than 6; ^a Fetal deaths are included in the total counts of pregnancies; ^b All rates per 1,000 females 18-19 years old; ^c Not of Hispanic origin; ^d Includes other and unspecified ethnicity; ^e Number of births per 1,000 females 18-19 years old.

**TABLE 8
NUMBER OF PREGNANCIES^a BY PREGNANCY OUTCOME, RACE/ETHNICITY, AND YEAR AMONG FEMALES 19 AND YOUNGER,
WITH RATES^b, ARIZONA, 2004-2014**

Race/ethnicity Pregnancy outcome	2004	2005	2006	2007	2008	2009	2010	2011	2012	2013	2014	2014 Rates
WHITE^c NON-HISPANIC, total:	3,924	3,631	4,148	4,101	3,852	3,454	3,086	2,392	2,239	2,050	2,255	11.6
Births	2,806	2,744	3,209	3,100	2,993	2,715	2,386	2,089	1,977	1,781	1,757	9.0
Abortions	1,095	867	917	982	841	720	694	289	238	257	488	2.5
HISPANIC OR LATINO, total:	7,965	7,748	8,396	8,545	7,764	6,896	5,918	5,297	5,085	4,618	4,370	25.4
Births	7,138	7,188	7,738	7,782	7,168	6,341	5,348	4,631	4,627	4,080	3,813	22.2
Abortions	784	522	609	710	561	525	532	638	441	509	531	3.1
BLACK OR AFRICAN AMERICAN, total:	671	688	731	766	812	722	635	580	562	537	490	16.9
Births	540	569	601	621	656	603	562	561	544	507	394	13.6
Abortions	125	114	124	136	143	110	67	17	14	23	90	3.1
AMERICAN INDIAN OR ALASKA NATIVE, total:	1,215	1,289	1,277	1,353	1,246	1,229	1,025	1,000 [†]	900 [†]	787	634	19.2
Births	1,142	1,204	1,216	1,285	1,185	1,170	988	987	890	775	602	18.3
Abortions	65	76	55	63	54	52	36	*	*	8	25	0.8
ASIAN OR PACIFIC ISLANDER, total:	148	132	132	167	149	129	117	120 [†]	88	80 [†]	92	5.5
Births	92	96	92	103	113	88	103	111	79	79	57	3.4
Abortions	56	35	40	63	36	40	14	*	9	*	35	2.1
ALL RACIAL/ETHNIC GROUPS^d, total:	14,163	13,898	14,918	15,038	14,047	12,537	10,980	10,269	9,710	8,715	7,924	17.8
Births	11,863	11,933	12,916	12,972	12,161	10,952	9,416	8,435	8,117	7,222	6,623	14.9
Abortions	2,220	1,892	1,919	1,979	1,813	1,519	1,512	1,785	1,539	1,441	1,249	2.8
Pregnancy rate, total:	34.6	32.7	34.1	34.4	31.6	28.0	24.7	23.0	21.6	19.2	17.8	
Fertility rate^e	29.0	28.1	29.6	29.7	27.4	24.4	21.2	18.9	18.0	15.9	14.9	
Abortion rate	5.4	4.5	4.4	4.5	4.1	3.4	3.4	4.0	3.4	3.2	2.8	

Notes: * Cell suppressed due to non-zero count less than 6; ** Cell suppressed due to rate/ratio/percent based on non-zero count less than 6; [†] Sum rounded to nearest tens unit due to non-zero addend less than 6; ^a Fetal deaths are included in the total counts of pregnancies; ^b All rates per 1,000 females 19 or younger; ^c Not of Hispanic origin; ^d Includes other and unspecified ethnicity; ^e Number of births per 1,000 females 19 or younger.

**TABLE 9
TRENDS IN PREGNANCY RATES^a BY COUNTY OF RESIDENCE AMONG FEMALES 10-17 AND 18-19 YEARS OLD,
ARIZONA, 2004-2014**

	ARIZONA	APACHE	COCHISE	COCONINO	GILA	GRAHAM	GREENLEE	LA PAZ	MARICOPA	MOHAVE	NAVAJO	PIMA	PINAL	SANTA CRUZ	YAVAPAI	YUMA	
19 YEARS OR YOUNGER	2004	34.6	32.8	30.0	27.7	38.4	22.5	36.6	39.8	35.5	28.7	33.7	33.8	36.4	38.6	27.9	42.1
	2005	32.7	25.9	30.0	27.7	38.8	20.9	31.0	49.8	33.9	32.1	33.1	30.6	33.5	30.7	25.7	37.0
	2006	34.1	25.6	24.2	31.0	37.7	35.5	24.7	30.0	35.4	33.0	30.0	32.9	34.1	32.9	29.6	38.0
	2007	34.4	27.5	29.1	33.2	41.7	40.1	25.4	50.9	35.4	31.9	33.7	30.5	37.4	32.2	33.0	37.8
	2008	31.6	25.3	27.2	28.6	45.9	33.2	33.2	38.6	32.5	28.1	36.3	29.0	31.3	31.5	26.9	35.1
	2009	28.0	27.7	28.7	27.6	40.8	33.7	41.2	27.8	27.4	25.9	33.2	27.0	27.6	29.1	25.0	36.1
	2010	24.7	26.7	27.5	22.5	39.7	33.3	35.7	38.1	23.7	24.6	32.8	24.7	22.8	30.5	21.4	34.1
	2011	23.0	23.6	24.7	20.3	35.9	28.5	34.1	31.9	22.4	18.9	33.4	22.6	21.7	27.9	19.9	30.1
	2012	21.6	21.6	24.0	18.0	29.9	29.2	18.9	25.3	20.7	19.2	29.8	21.4	20.6	29.0	18.7	29.0
	2013	19.2	19.1	18.9	16.2	32.0	26.7	28.8	37.6	18.4	15.8	23.3	19.2	16.4	20.6	16.7	25.1
	2014	17.8	17.7	18.4	14.7	29.0	27.1	26.8	33.4	17.4	17.5	21.8	16.9	15.5	20.0	17.2	19.7
18-19 YEARS	2004	108.7	141.6	106.7	76.9	164.3	57.7	173.1	153.8	110.9	112.8	141.3	93.7	121.0	147.2	99.3	135.6
	2005	103.6	105.4	110.0	79.5	150.5	56.7	174.8	148.7	106.5	134.0	138.2	83.7	119.8	111.8	104.1	122.2
	2006	115.6	87.9	71.1	84.0	139.8	95.6	69.0	63.0	125.0	142.1	99.4	95.8	129.3	108.5	109.2	122.8
	2007	121.4	89.4	99.8	81.2	164.0	103.4	122.4	242.8	131.9	157.6	125.8	89.6	144.9	102.8	129.9	129.8
	2008	111.3	89.5	92.4	72.2	165.9	94.7	133.3	156.1	120.0	135.7	135.7	86.5	121.8	111.6	100.1	121.7
	2009	102.5	100.2	102.7	68.9	160.2	93.2	203.9	127.2	106.0	129.2	132.3	82.3	108.4	115.7	101.3	119.9
	2010	80.8	96.6	90.6	40.2	137.9	96.0	122.4	177.8	80.3	96.5	122.7	68.7	96.8	94.2	84.5	114.7
	2011	77.2	94.2	78.9	36.2	132.6	81.7	163.3	127.8	78.4	75.9	121.1	64.3	94.7	104.2	71.3	109.3
	2012	70.2	79.6	80.2	33.4	105.8	95.2	64.7	87.7	69.3	69.6	115.7	61.9	82.2	97.9	64.6	90.1
	2013	64.8	68.5	65.2	30.8	132.9	103.3	108.9	146.2	64.2	59.4	92.9	54.6	67.7	92.3	62.2	83.0
	2014	65.2	66.4	66.7	25.8	114.8	108.7	142.9	126.4	68.3	79.5	81.0	48.7	70.8	66.9	75.5	72.0
10-17 YEARS	2004	15.9	13.5	12.7	12.9	15.4	10.9	10.9	17.8	16.5	11.8	14.6	15.1	18.3	17.9	12.3	20.4
	2005	14.8	11.9	11.7	12.1	18.2	9.0	**	30.7	15.7	11.5	14.4	14.0	14.9	15.2	8.6	17.1
	2006	15.1	10.8	12.0	14.1	16.6	17.6	**	13.1	15.7	12.4	14.9	14.7	13.4	16.5	11.8	16.6
	2007	14.8	12.5	12.0	16.3	16.2	19.3	**	15.8	15.3	10.7	14.4	13.6	16.4	17.7	12.8	16.0
	2008	13.7	9.7	11.3	13.2	21.0	12.9	16.2	17.0	14.3	9.5	15.5	12.5	13.6	15.0	10.9	14.6
	2009	11.2	10.1	10.8	13.0	15.9	14.2	13.3	9.5	11.0	8.1	12.5	11.2	11.8	11.4	8.4	16.1
	2010	10.0	11.0	10.8	11.5	18.1	11.9	19.3	**	9.5	8.1	12.5	10.3	8.6	17.1	6.6	14.9
	2011	8.7	7.8	10.4	10.6	14.6	10.3	**	10.1	8.4	5.8	13.6	9.0	7.7	11.9	7.8	11.2
	2012	8.4	7.7	9.2	8.3	11.7	12.2	**	8.9	8.1	6.3	10.4	8.0	7.2	15.0	7.4	12.6
	2013	6.9	8.1	6.9	7.3	10.7	10.0	10.8	12.8	6.6	4.4	7.1	7.4	5.3	7.7	5.4	10.1
	2014	5.1	6.0	6.4	6.3	9.9	8.7	**	11.6	4.7	4.5	8.5	5.4	4.5	8.8	3.4	6.5

Notes: ** Cell suppressed due to rate/ratio/percent based on count less than 6; ^a Number of pregnancies per 1,000 females in specified group.

**TABLE 10
LIVE BIRTHS TO FEMALES 19 OR YOUNGER AS A PERCENTAGE OF TOTAL LIVE BIRTHS BY AREA, RACE/ETHNICITY,
AND YEAR, ARIZONA, 2004-2014**

Group	2004	2005	2006	2007	2008	2009	2010	2011	2012	2013	2014
ARIZONA, TOTAL^a											
# Births (all ages)	93,396	95,798	102,042	102,687	99,215	92,616	87,053	85,190	85,725	84,963	86,648
# Births to teenagers	11,863	11,933	12,916	12,972	12,161	10,952	9,416	8,535	8,117	7,222	6,623
% Births to teenagers	12.7	12.5	12.7	12.6	12.2	11.8	10.8	10.0	9.5	8.5	7.6
URBAN COUNTIES^b											
# Births (all ages)	79,951	82,141	87,910	88,266	85,263	79,046	74,624	74,040	74,128	73,493	74,677
# Births to teenagers	9,786	9,827	10,809	10,693	10,013	8,867	7,690	6,886	6,697	6,011	5,447
% Births to teenagers	12.2	12.0	12.3	12.1	11.7	11.2	10.3	9.3	9.0	8.2	7.3
RURAL COUNTIES											
# Births (all ages)	13,409	13,603	14,083	14,413	13,952	13,570	12,429	12,150	11,597	11,470	11,955
# Births to teenagers	2,074	2,103	2,100	2,279	2,148	2,085	1,726	1,549	1,420	1,211	1,175
% Births to teenagers	15.5	15.5	14.9	15.8	15.3	15.4	13.9	12.7	12.2	10.6	9.8
WHITE NON-HISPANIC											
# Births (all ages)	39,271	39,657	43,013	42,216	41,925	39,781	38,777	38,294	38,670	38,220	40,097
# Births to teenagers	2,806	2,744	3,209	3,100	2,993	2,715	2,386	2,089	1,977	1,781	1,757
% Births to teenagers	7.2	6.9	7.5	7.3	7.1	6.8	6.2	5.5	5.1	4.7	4.4
HISPANIC OR LATINO											
# Births (all ages)	40,822	42,156	44,862	45,731	42,639	38,362	34,333	32,398	33,146	33,075	33,715
# Births to teenagers	7,138	7,188	7,738	7,782	7,168	6,341	5,348	4,631	4,627	4,080	3,813
% Births to teenagers	17.5	17.0	17.2	17.0	16.8	16.5	15.6	14.3	14.0	12.3	11.3
BLACK OR AFRICAN AMERICAN											
# Births (all ages)	3,216	3,450	3,864	4,165	4,301	4,378	4,328	4,366	4,715	4,726	4,522
# Births to teenagers	540	569	601	621	656	603	562	561	544	507	394
% Births to teenagers	16.8	16.5	15.6	14.9	15.2	13.8	13.0	12.8	11.5	8.7	8.7
AMERICAN INDIAN OR ALASKA NATIVE											
# Births (all ages)	6,120	6,293	6,364	6,408	6,362	6,170	5,815	5,830	5,569	5,476	5,145
# Births to teenagers	1,142	1,204	1,216	1,285	1,185	1,170	988	987	890	775	602
% Births to teenagers	18.9	19.1	19.1	20.0	18.6	19.0	17.0	16.9	16.0	14.2	11.7
ASIAN OR PACIFIC ISLANDER											
# Births (all ages)	2,614	2,805	3,136	3,412	3,425	3,396	3,293	3,505	3,625	3,466	3,169
# Births to teenagers	92	96	92	103	113	88	103	111	79	79	57
% Births to teenagers	3.5	3.4	2.9	3.0	3.2	2.6	3.1	3.2	2.2	2.3	1.8

Notes: ^a Includes records for ethnic groups other than White Non-Hispanic, Hispanic or Latino, Black or African American, American Indian or Alaska Native, or Asian or Pacific Islander;

^b Urban = Maricopa, Pima, Pinal, and Yuma. The remaining counties comprise Arizona's rural areas.

**TABLE 11
BIRTH RATES BY AGE GROUP FOR FEMALES 19 OR YOUNGER,
ARIZONA, AND UNITED STATES, 2004-2014**

Year	Under 15 years		15 - 19 years old					
			Total		15-17 years		18-19 years	
	AZ	U.S.	AZ	U.S.	AZ	U.S.	AZ	U.S.
2004	0.9	0.6	58.2	40.5	35.8	21.8	90.2	68.7
2005	0.9	0.6	56.5	39.7	34.1	21.1	88.4	68.4
2006	0.8	0.6	59.6	41.1	34.0	21.6	100.2	71.2
2007	0.8	0.6	59.5	41.5	32.3	21.7	105.1	71.7
2008	0.7	0.6	54.9	40.2	30.3	21.1	96.3	68.2
2009	0.6	0.5	49.1	37.9	25.3	19.6	89.0	64.0
2010	0.5	0.4	41.5	34.2	22.1	17.3	69.2	58.2
2011	0.5	0.4	37.2	31.3	18.6	15.4	63.7	54.1
2012	0.3	0.4	35.4	29.4	18.5	14.1	58.6	51.4
2013	0.3	0.3	31.3	26.5	15.0	12.3	53.6	47.1
2014	0.2	0.3	29.9	24.2	13.4	10.9	54.7	43.8

Note: The U.S. data is from the National Vital Statistics reports published by the National Center for Health Statistics.

**TABLE 12
REPEAT PREGNANCIES AMONG TEENAGE MOTHERS GIVING BIRTH BY AGE AND YEAR, ARIZONA, 2004-2014**

Mother's age	Pregnancies	Year										
		2004	2005	2006	2007	2008	2009	2010	2011	2012	2013	2014
15	Total	566	603	593	604	570	446	339	249	293	220 [†]	184
	Previous pregnancies	538	559	558	553	553	428	317	239	283	217	173
	One or more	25	44	35	51	17	18	22	10	8	*	10
16	Unknown	*	0	0	0	0	0	0	0	*	*	*
	Total	1,389	1,317	1,448	1,360	1,250	1,107	937	792	774	609	531
	Previous pregnancies	1,228	1,167	1,290	1,199	1,146	988	848	743	732	571	511
17	One or more	159	150	158	161	104	119	89	49	42	38	20
	Unknown	*	0	0	0	0	0	0	0	0	0	0
	Total	2,272	2,259	2,409	2,397	2,331	1,948	1,634	1,406	1,363	1,153	1,055
18	Previous pregnancies	1,838	1,791	1,905	1,895	1,983	1,598	1,343	1,197	1,218	1,022	938
	One or more	427	468	502	502	348	350	291	209	145	129	116
	Unknown	7	0	*	0	0	0	0	0	0	*	*
19	Total	3,208	3,351	3,523	3,661	3,376	3,078	2,647	2,399	2,281	2,012	1,886
	Previous pregnancies	2,250	2,411	2,519	2,645	2,576	2,226	1,967	1,901	1,845	1,658	1,545
	One or more	954	940	1,004	1,016	799	851	680	498	434	351	341
19	Unknown	*	0	0	0	*	*	0	0	*	*	0
	Total	4,240	4,218	4,773	4,770	4,473	4,241	3,754	3,488	3,339	3,154	2,921
	Previous pregnancies	2,556	2,631	2,961	2,980	3,065	2,667	2,459	2,414	2,444	2,376	2,233
19	One or more	1,681	1,586	1,812	1,790	1,407	1,570	1,295	1,074	892	777	687
	Unknown	*	*	0	0	*	*	0	0	*	*	*

Notes: * Cell suppressed due to non-zero count less than 6; † Sum rounded to nearest tens unit due to non-zero addend less than 6.

**TABLE 13
CUMULATIVE NUMBER OF MOTHERS WHO WERE 19 OR YOUNGER IN ARIZONA IN 2014**

Year Baby Was Born	MOTHER'S AGE WHEN BABY WAS BORN										Mother was 19 or younger in 2014	
	10	11	12	13	14	15	16	17	18	19		
2005	0											0
2006	0	0										0
2007	0	0	*									0†
2008	0	*	*	16								20†
2009	0	0	*	15	116							130†
2010	0	*	*	11	92	339						440†
2011	0	0	*	7	93	249	792					1,140†
2012	0	0	*	*	61	293	774	1363				2,500†
2013	0	0	*	15	55	223	609	1153	2012			4,070†
2014	0	0	0	6	40	184	531	1055	1886	2921		6,623
Cumulative number of mothers 19 or younger	0	0†	20†	70†	457	1,288	2,706	3,571	3,898	2,921		14,930†

Notes: * Cell suppressed due to non-zero count less than 6; † Sum rounded to nearest tens unit due to non-zero addend less than 6; The above table focuses on the 2014 cohort of Arizona mothers who were 19 or younger that year. Among them are those who gave birth in 2014 and those who gave birth prior to 2014 and were still 19 or less years old in 2014. The numbers below the main diagonal (and below the stair-like line) represent the number of mothers meeting either one of the above criteria. The last column to the right gives the cumulative total for 2014 by the year the baby was born. For example, from among those girls and adolescents who had their baby in 2007, 4 remained in their teens in 2014. The bottom row gives the cumulative total by mother's age when the baby was born. For example, among the 14,930 mothers under 20 in Arizona in 2014, 72 had given birth when 13 years old. Excluded from the cumulative totals and not shown above the main diagonal (and above stair-like line) are the number of mothers who were 19 years old or younger when the baby was born, but who were no longer under the age 20 by 2014. For example, mothers who were 11 years old in 2005 were 20 years old in 2014. The figures in Table 13 are unadjusted for in-and-out migration, as well as mortality of mothers, in the period of 2005-2014. For simplicity, the number of mothers equals the number of babies (i.e., no adjustment was made for multiple birth events).

**TABLE 14
TRENDS IN TEEN PREGNANCY RATES BY RACE/ETHNICITY AND AGE GROUP,
ARIZONA, 2004-2014**

	All 19 years or younger	10-14 years	15-19 years	15-17 years	18-19 years
WHITE NON-HISPANIC					
2004	17.7	0.3	35.3	16.9	61.2
2005	15.8	0.3	31.6	14.9	55.1
2006	18.9	0.4	37.2	17.2	68.6
2007	19.0	0.9	36.3	15.6	70.3
2008	17.5	0.3	34.1	14.9	65.3
2009	15.6	0.3	30.3	12.3	59.6
2010	15.9	0.3	30.5	12.9	53.9
2011	11.8	0.2	22.8	9.6	40.8
2012	10.7	0.1	20.6	9.0	35.6
2013	9.8	0.1	18.9	7.1	34.0
2014	11.6	0.2	23.0	8.2	45.5
HISPANIC OR LATINO					
2004	59.2	2.3	120.1	79.7	177.4
2005	55.5	2.2	112.5	72.9	168.9
2006	56.0	1.9	117.3	72.7	188.1
2007	55.3	1.9	116.8	68.5	201.2
2008	49.4	1.7	104.4	62.7	177.2
2009	43.5	1.1	92.4	51.3	164.2
2010	33.8	0.9	67.9	38.9	112.6
2011	30.2	0.9	60.5	31.8	104.0
2012	28.0	0.6	56.7	31.6	93.8
2013	25.0	0.6	50.7	25.9	87.4
2014	25.4	0.3	51.9	25.2	91.7
BLACK OR AFRICAN AMERICAN					
2004	44.2	1.6	91.8	53.0	149.8
2005	43.5	1.6	89.0	51.6	144.8
2006	32.6	1.4	67.2	36.1	118.1
2007	36.1	2.3	73.9	36.9	144.1
2008	37.7	1.6	78.1	37.2	155.7
2009	33.3	0.8	69.5	31.6	141.7
2010	29.5	1.1	56.1	27.3	97.0
2011	24.9	0.9	47.7	22.3	84.0
2012	26.2	**	49.8	26.2	81.2
2013	25.1	0.7	47.5	20.9	82.9
2014	16.9	**	33.3	15.9	59.4
AMERICAN INDIAN OR ALASKA NATIVE					
2004	39.7	1.4	83.6	53.2	134.2
2005	40.8	1.5	85.8	55.0	137.0
2006	36.2	1.1	71.1	41.5	119.8
2007	39.1	2.0	73.8	42.4	124.9
2008	35.5	1.4	67.4	38.1	115.2
2009	34.7	1.0	66.2	36.9	114.0
2010	37.0	1.2	69.5	40.5	111.0
2011	29.2	0.8	55.7	28.8	94.2
2012	33.6	0.5	65.5	32.2	110.7
2013	29.7	0.6	58.6	31.5	98.0
2014	19.2	0.7	37.8	21.0	62.7
ASIAN OR PACIFIC ISLANDER					
2004	19.3	**	36.2	20.2	55.0
2005	16.2	**	30.4	16.2	47.6
2006	12.9	**	25.7	13.0	45.0
2007	15.3	0.0	31.1	12.0	62.2
2008	13.5	**	27.6	11.6	53.5
2009	11.6	**	23.6	8.2	48.7
2010	9.9	**	19.9	8.3	35.5
2011	9.1	**	18.0	7.2	32.7
2012	7.5	**	14.6	5.6	26.6
2013	6.8	**	13.2	3.7	25.5
2014	5.5	**	10.9	4.6	20.3

Note: ** Cell suppressed due to rate/ratio/percent based on non-zero count less than 6.

**TABLE 15
TRENDS IN SEXUALLY TRANSMITTED INFECTIONS BY AGE GROUP AND YEAR AMONG FEMALES 10-19 YEARS,
ARIZONA, 2004-2014**

	2004	2005	2006	2007	2008	2009	2010	2011	2012	2013	2014
10-14 years											
Diagnosed with:											
Gonorrhea	36	40	40	32	19	26	22	27	21	21	16
Chlamydia	188	210	224	278	249	224	223	208	197	135	143
Early syphilis	0	0	0	*	*	0	0	0	0	0	0
Total reported infections	224	250	264	310 [†]	270 [†]	250	245	235	218	156	159
15-19 years											
Diagnosed with:											
Gonorrhea	538	721	804	709	468	453	529	691	813	702	679
Chlamydia	4,400	5,451	6,188	6,600	6,595	6,771	6,666	7,073	6,882	6,213	5,876
Early syphilis	19	13	16	25	8	6	10	8	6	6	9
Total reported infections	4,957	6,185	7,008	7,334	7,071	7,230	7,205	7,772	7,701	6,921	6,564

Notes: * Cell suppressed due to non-zero count less than 6; † Sum rounded to nearest tens unit due to non-zero addend less than 6; Information about the number of reported cases of gonorrhea, chlamydia, and early syphilis was provided by STD Program in the Office of Infectious Diseases (see Table 3B-3 in the Arizona Health Status and Vital Statistics annual reports).

TABLE 16
TRENDS IN THE INCIDENCE RATES^a OF SEXUALLY TRANSMITTED INFECTIONS BY AGE GROUP AND YEAR AMONG
FEMALES 10-19 YEARS, ARIZONA, 2004-2014

	2004	2005	2006	2007	2008	2009	2010	2011	2012	2013	2014
10-14 years											
Diagnosed with:											
Gonorrhea	17.2	18.5	17.9	14.4	8.4	11.4	10.0	12.3	9.4	9.4	0.0
Chlamydia	90.1	97.1	100.3	125.1	110.3	98.3	101.5	94.7	88.5	60.4	0.0
Early syphilis	0.0	0.0	0.0	**	**	0.0	0.0	0.0	0.0	0.0	0.0
Total reported infections	107.3	124.6	118.2	140.0	119.1	109.7	111.5	107.0	97.9	69.8	70.8
15-19 years											
Diagnosed with:											
Gonorrhea	267.7	346.5	376.2	329.6	214.1	205.4	253.8	308.1	374.7	321.0	0.0
Chlamydia	2,189.1	2,619.4	2,895.7	3,068.6	3,017.7	3,070.0	2,971.9	3,153.3	3,171.8	2,840.6	0.0
Early syphilis	9.5	6.2	7.5	11.6	3.7	2.7	4.5	3.6	2.8	2.7	0.0
Total reported infections	2,466.3	2,972.1	3,279.4	3,409.9	3,235.5	3,278.1	3,230.2	3,465.0	3,549.3	3,164.3	2,967.2

Notes: ** Cell suppressed due to rate/ratio/percent based on non-zero count less than 6; † Sum rounded to nearest tens unit due to non-zero addend less than 6; ^a Number of cases per 100,000 females in specified age group.

**TABLE 17
PREGNANCIES AND PREGNANCY RATES OF FEMALES 19 OR YOUNGER
BY COUNTY OF RESIDENCE, ARIZONA, 2014**

County of residence	NUMBER OF PREGNANCIES ^a				
	All 19 years or younger	10-14 years	15-19 years		
			Total 15-19 years	15-17 years	18-19 years
Apache	110†	*	103	26	77
Cochise	144	0	144	40	104
Coconino	160†	*	159	43	116
Gila	90†	*	85	23	62
Graham	76	0	76	22	54
Greenlee	20	0	20†	*	17
La Paz	30†	*	31	8	23
Maricopa	4,749	42	4,707	1,262	3,445
Mohave	190†	*	188	42	146
Navajo	180†	*	176	56	120
Pima	1,095	7	1,088	318	770
Pinal	400†	*	393	107	286
Santa Cruz	81	0	81	30	51
Yavapai	190†	*	183	35	148
Yuma	304	0	304	83	221
TOTAL STATE	7,924	70†	7,856	2,130†	5,731

County of residence	PREGNANCY RATES ^b				
	All 19 years or younger	10-14 years	15-19 years		
			Total 15-19 years	15-17 years	18-19 years
Apache	17.7	**	35.1	14.6	66.4
Cochise	18.4	0.0	37.2	17.3	66.7
Coconino	14.7	**	22.6	17.1	25.8
Gila	29.0	**	58.9	25.5	114.8
Graham	27.1	0.0	58.0	27.0	108.7
Greenlee	26.8	0.0	56.7	**	142.9
La Paz	33.4	**	63.7	26.2	126.4
Maricopa	17.4	0.3	35.4	15.3	68.3
Mohave	17.5	**	36.2	12.5	79.5
Navajo	21.8	**	43.9	22.2	81.0
Pima	16.9	0.2	32.0	17.5	48.7
Pinal	15.5	**	33.9	14.2	70.8
Santa Cruz	20.0	0.0	40.5	24.3	66.9
Yavapai	17.2	**	34.0	10.2	75.5
Yuma	19.7	0.0	39.6	18.0	72.0
TOTAL STATE	17.8	0.3	35.7	16.1	65.2

Notes: * Cell suppressed due to non-zero count less than 6; ** Cell suppressed due to rate/ratio/percent based on non-zero count less than 6; † Sum rounded to nearest tens unit due to non-zero addend less than 6; ^a The sum of live births, fetal deaths and abortions; ^b The number of pregnancies per 1,000 females in specified group.

TABLE 18
BIRTHS AND BIRTH RATES, FEMALES 19 OR YOUNGER BY COUNTY OF RESIDENCE,
ARIZONA, 2014

County of residence	NUMBER OF BIRTHS				
	All 19 years or younger	10-14 years	15-19 years		
			Total 15-19 years	15-17 years	18-19 years
Apache	110 [†]	*	103	26	77
Cochise	136	0	136	40	96
Coconino	140 [†]	*	141	40	101
Gila	80 [†]	*	81	23	58
Graham	70	0	70	20	50
Greenlee	18	0	20 [†]	*	15
La Paz	30 [†]	*	30	8	22
Maricopa	3,893	28	3,865	1,023	2,842
Mohave	180 [†]	*	180	39	141
Navajo	170 [†]	*	170	54	116
Pima	900 [†]	*	898	262	636
Pinal	360 [†]	*	357	94	263
Santa Cruz	76	0	76	29	47
Yavapai	160 [†]	*	157	28	129
Yuma	294	0	294	80	214
TOTAL STATE	6,623	50[†]	6,577	1,770[†]	4,807

County of residence	BIRTH RATES ^a				
	All 19 years or younger	10-14 years	15-19 years		
			Total 15-19 years	15-17 years	18-19 years
Apache	17.7	**	35.1	14.6	66.4
Cochise	17.4	0.0	35.1	17.3	61.6
Coconino	12.9	**	20.1	15.9	22.4
Gila	27.6	**	56.1	25.5	107.4
Graham	24.9	0.0	53.4	24.6	100.6
Greenlee	24.2	0.0	51.0	**	126.1
La Paz	32.4	**	61.6	26.2	120.9
Maricopa	14.3	0.2	29.1	12.4	56.4
Mohave	16.7	**	34.6	11.6	76.8
Navajo	21.0	**	42.4	21.4	78.3
Pima	13.9	**	26.4	14.4	40.2
Pinal	14.0	**	30.8	12.4	65.1
Santa Cruz	18.8	0.0	38.0	23.4	61.7
Yavapai	14.7	**	29.2	8.2	65.8
Yuma	19.1	0.0	38.3	17.3	69.8
TOTAL STATE	14.9	0.2	29.9	13.4	54.7

Notes: * Cell suppressed due to non-zero count less than 6; ** Cell suppressed due to rate/ratio/percent based on non-zero count less than 6; [†] Sum rounded to nearest tens unit due to non-zero addend less than 6; ^a The number of births per 1,000 females in specified group.

**TABLE 19
PREGNANCY RATES^a AND NUMBER OF LIVE BIRTHS, FETAL DEATHS, AND
ABORTIONS TO TEENS BY INDIVIDUAL AGE, ARIZONA, 2014**

Age	Population	PREGNANCIES BY OUTCOME			TOTAL PREGNANCIES	
		Live births	Induced terminations of pregnancy (or abortions)	Spontaneous fetal losses	Number	Rate
10	44,767	0	0	0	0	0.0
11	44,337	0	*	0	*	**
12	45,362	0	0	0	0	0.0
13	45,889	6	*	0	11	0.2
14	44,725	40	15	0	55	1.2
10-14	225,080	46	20 [†]	0	70 [†]	0.3
15	44,036	184	60	*	246	5.6
16	44,155	531	111	8	650	14.7
17	43,985	1,055	159	15	1,229	27.9
15-17	132,176	1,770	330	30 [†]	2,125	16.1
18	44,120	1,886	408	10	2,304	52.2
19	43,838	2,921	489	17	3,427	78.2
18-19	87,958	4,807	897	27	5,731	65.2
Total 10-19	445,214	6,623	1,249	52	7,924	17.8

Notes: * Cell suppressed due to non-zero count less than 6; ** Cell suppressed due to rate/ratio/percent based on non-zero count less than 6; [†] Sum rounded to nearest tens unit due to non-zero addend less than 6; ^a Rates per 1,000 female population in specific group.

**TABLE 20
BIRTHS TO FEMALES 19 OR YOUNGER BY AGE AND COUNTY OF RESIDENCE,
ARIZONA, 2014**

	Total	Mother's age							
		12	13	14	15	16	17	18	19
TOTAL	6,623	0	10†	40†	180†	530†	1,060†	1,890†	2,921
Apache	110†	0	0	*	*	8	16	28	49
Cochise	136	0	0	0	6	13	21	35	61
Coconino	140†	0	0	*	7	9	24	44	57
Gila	80†	0	0	*	*	9	9	24	34
Graham	70†	0	0	0	*	6	12	18	32
Geenlee	20†	0	0	0	0	0	*	*	11
La Paz	30†	0	0	*	*	*	*	12	10
Maricopa	3,890†	0	*	25	101	311	611	1,097	1,745
Mohave	180†	0	0	*	*	14	21	58	83
Navajo	170†	0	*	*	10	16	28	46	70
Pima	900†	0	*	*	28	83	151	259	377
Pinal	360†	0	0	*	8	26	60	104	159
Santa Cruz	80†	0	0	0	*	*	23	23	24
Yavapai	160†	0	*	*	*	10	17	42	87
Yuma	290†	0	0	0	*	21	54	92	122
Unknown	0†	0	0	0	0	*	0	0	0

Note: * Cell suppressed due to non-zero count less than 6; † Sum rounded to nearest tens unit due to non-zero addend less than 6.

**TABLE 21
ABORTIONS TO FEMALES 19 OR YOUNGER BY AGE AND COUNTY OF RESIDENCE,
ARIZONA, 2014**

	Total	11	12	13	14	15	16	17	18	19
TOTAL	1,250†	0†	0	10†	20†	60†	110†	160†	410†	490†
Apache	0	0	0	0	0	0	0	0	0	0
Cochise	10†	0	0	0	0	0	0	0	6	*
Coconino	20†	0	0	*	0	0	*	*	7	7
Gila	0†	0	0	0	0	0	0	0	*	*
Graham	10†	0	0	0	0	0	0	*	*	*
Greenlee	0†	0	0	0	0	0	0	0	*	*
La Paz	0†	0	0	0	0	0	0	0	*	0
Maricopa	820†	*	0	*	12	34	79	107	259	328
Mohave	10†	0	0	0	0	*	*	0	*	*
Navajo	0†	0	0	0	0	0	0	*	*	*
Pima	190†	*	0	*	*	14	17	23	61	70
Pinal	30†	0	0	0	0	*	*	*	16	6
Santa Cruz	10†	0	0	0	0	*	0	0	*	*
Yavapai	30†	0	0	0	*	*	*	*	8	10
Yuma	10†	0	0	0	0	0	0	*	*	*
Unknown	120†	0	0	*	0	*	10	13	38	53

Notes: * Cell suppressed due to non-zero count less than 6; † Sum rounded to nearest tens unit due to non-zero addend less than 6.

**TABLE 22
SOURCES OF PAYMENT FOR LABOR AND DELIVERY, FEMALES 19 OR YOUNGER
BY AGE AND COUNTY OF RESIDENCE, ARIZONA, 2014**

	Total	AHCCCS	IHS	Private insurance	Self-pay	Unknown
TOTAL	6,623	5,543	150†	720†	200†	20†
Apache	110†	76	28	*	*	0
Cochise	140†	113	*	15	7	0
Coconino	140†	126	*	12	*	*
Gila	80†	53	17	10	*	0
Graham	70†	44	12	*	10	0
Greenlee	20†	13	0	*	*	0
La Paz	30†	27	*	0	*	0
Maricopa	3,893	3,364	31	417	69	12
Mohave	180†	148	*	24	*	*
Navajo	170†	153	10	6	*	*
Pima	901	716	14	133	37	*
Pinal	359	268	24	50	16	*
Santa Cruz	80†	63	0	*	9	0
Yavapai	160†	135	0	19	*	0
Yuma	294	244	0	17	33	0
Unknown	0†	0	0	0	*	0

Notes: * Cell suppressed due to non-zero count less than 6; † Sum rounded to nearest tens unit due to non-zero addend less than 6.

**TABLE 23
SOURCES OF PAYMENT FOR LABOR AND DELIVERY, FEMALES 19 OR YOUNGER
BY AGE GROUP, ARIZONA, 2014**

		Total	Mother's age group			
			<15	15-17	18-19	
Total	Count	6,620 [†]	50 [†]	1,770	4,807	
Payee for births	AHCCCS	Count	5,543	36	1,435	4,072
		Percent	83.7	78.3	81.1	84.7
	IHS	Count	150 [†]	*	46	97
		Percent	2.2	**	2.6	2.0
	Private insurance	Count	720 [†]	*	199	512
		Percent	10.8	**	11.2	10.7
	Self-pay	Count	200 [†]	*	82	116
		Percent	3.0	**	4.6	2.4
	Unknown	Count	20 [†]	*	8	10
		Percent	0.3	**	0.5	0.2

Notes: * Cell suppressed due to non-zero count less than 6; ** Cell suppressed due to rate/ratio/percent based on non-zero count less than 6; [†] Sum rounded to nearest tens unit due to non-zero addend less than 6.

**TABLE 24
TEENAGE BIRTHS BY NUMBER OF PREVIOUS PREGNANCIES BY AGE GROUP,
ARIZONA, 2014**

		Total	Mother's age group			
			<15	15-17	18-19	
Total	Count	6,620 [†]	46	1,770 [†]	4,810 [†]	
Total prior pregnancies	None	Count	5,446	46	1,622	3,778
		Percent	82.2	100.0	91.6	78.6
	1	Count	1,022	0	140	882
		Percent	15.4	0.0	7.9	18.3
	2	Count	140 [†]	0	*	131
		Percent	2.0	0.0	0.0	2.7
	3	Count	14	0	0	14
		Percent	0.2	0.0	0.0	0.3
	4 or more	Count	0 [†]	0	*	*
		Percent	0.0	0.0	0.0	0.0
	Unknown	Count	0 [†]	0	*	*
		Percent	0.0	0.0	0.0	0.0

**TABLE 25
TEENAGE BIRTHS BY MARITAL STATUS AND AGE GROUP,
ARIZONA, 2014**

		Total	Mother's age group			
			<15	15-17	18-19	
Total	Count	6,623	46	1,770 [†]	4,807	
Marital status	Married	Count	700	0	85	615
		Percent	10.6	0.0	4.8	12.8
	Unmarried	Count	5,902	46	1,683	4,173
		Percent	89.1	100.0	95.1	86.8
	Other	Count	20 [†]	0	*	19
		Percent	0.3	0.0	**	0.4

**TABLE 26
TEENAGE BIRTHS BY MOTHER'S EDUCATION AND AGE GROUP
ARIZONA, 2014**

		Total	Mother's age group			
			<15	15-17	18-19	
Total	Count	6,623	46	1,770	4,807	
Mother's education	8th Grade or Less	Count	315	31	131	153
		Percent	4.8	67.4	7.4	3.2
	Some High School	Count	3,495	15	1,460	2,020
		Percent	52.8	32.6	82.5	42.0
	High School / GED	Count	2,182	0	156	2,026
		Percent	32.9	0.0	8.8	42.1
	Some College	Count	567	0	14	553
		Percent	8.6	0.0	0.8	11.5
	Associate Degree	Count	31	0	0	31
		Percent	0.5	0.0	0.0	0.6
	Bachelor's Degree	Count	0	0	0	0
		Percent	0.0	0.0	0.0	0.0
	Postgraduate Education	Count	0.0	0.0	0.0	0.0
		Percent	0.0	**	0.0	0.0
	Unknown	Count	33	0	9	24
		Percent	0.5	0.0	0.5	0.5

Notes: * Cell suppressed due to non-zero count less than 6; ** Cell suppressed due to rate/ratio/percent based on non-zero count less than 6; [†] Sum rounded to nearest tens unit due to non-zero addend less than 6.

**TABLE 27
TEENAGE BIRTHS BY TRIMESTER OF ENTRY INTO PRENATAL CARE
AND AGE GROUP, ARIZONA, 2014**

		Total	Mother's age group			
			<15	15-17	18-19	
Total	Count	6,623	50†	1,770	4,807	
Prenatal care	No care	Count	*	62	173	
		Percent	**	3.5	3.6	
	1st trimester	Count	3,458	11	834	2,613
		Percent	52.2	23.9	47.1	54.4
	2nd trimester	Count	1,786	14	521	1,251
		Percent	27.0	30.4	29.4	26.0
	3rd trimester	Count	603	6	213	384
		Percent	9.1	13.0	12.0	8.0
	Unknown	Count	537	11	140	386
		Percent	8.1	23.9	7.9	8.0

**TABLE 28
TEENAGE BIRTHS BY NUMBER OF PRENATAL VISITS AND AGE GROUP,
ARIZONA, 2014**

		Total	Mother's age group			
			<15	15-17	18-19	
Total	Count	6,623	50†	1,770	4,807	
Prenatal visits	No visits	Count	*	62	173	
		Percent	**	3.5	3.6	
	1-4 visits	Count	481	7	158	316
		Percent	7.3	15.2	8.9	6.6
	5-8 visits	Count	1,384	16	383	985
		Percent	20.9	34.8	21.6	20.5
	9-12 visits	Count	3,048	11	810	2,227
		Percent	46.0	23.9	45.8	46.3
	13+ visits	Count	1,366	6	327	1,033
		Percent	20.6	13.0	18.5	21.5
	Unknown	Count	110†	*	30	73
		Percent	1.6	**	1.7	1.5

Notes: * Cell suppressed due to non-zero count less than 6; ** Cell suppressed due to rate/ratio/percent based on non-zero count less than 6; † Sum rounded to nearest tens unit due to non-zero addend less than 6.

**TABLE 29
TOBACCO USE DURING PREGNANCY AMONG FEMALES 19 OR YOUNGER BY AGE GROUP,
19 OR YOUNGER BY AGE GROUP, ARIZONA, 2014**

			Total	Mother's age group		
				<15	15-17	18-19
Total	Count		6,623	50 [†]	1,770 [†]	4,807
Substance use	Nonsmoker	Count	6,353	45	1,720	4,588
		Percent	95.9	97.8	97.2	95.4
	Light smoker	Count	210 [†]	*	39	168
		Percent	3.1	**	2.2	3.5
	Heavy smoker	Count	37	0	8	29
		Percent	0.6	0.0	0.5	0.6
	Unknown	Count	30 [†]	0	*	22
		Percent	0.4	0.0	0.0	0.5

Notes: * Cell suppressed due to non-zero count less than 6; ** Cell suppressed due to rate/ratio/percent based on non-zero count less than 6; [†] Sum rounded to nearest tens unit due to non-zero addend less than 6.

**TABLE 30
RISK FOR LOW-BIRTHWEIGHT (LBW) BIRTHS BY SELECTED CHARACTERISTICS OF FEMALES 19 OR YOUNGER,
ARIZONA, 2014**

	Mother's age group											
	<15					15-17					18-19	
	Total births	LBW births		Total births	LBW births		Total births	LBW births		Total births	LBW births	
		Count	Percent		Count	Percent		Count	Percent		Count	Percent
Race/ethnicity												
White non-Hispanic	8	*	**	344	23	6.7	1,405	105	7.5			
Hispanic or Latino	23	0	0.0	1,115	80	7.2	2,675	182	6.8			
Black or African American	5	*	**	102	14	13.7	287	33	11.5			
American Indian or Alaska Native	9	0	0.0	196	10	5.1	397	24	6.0			
Asian	1	0	0.0	13	0	0.0	43	*	**			
Substance use												
Nonsmoker	45	*	**	1,720	122	7.1	4,588	321	7.0			
Light smoker	1	0	0.0	39	*	**	168	16	9.5			
Heavy smoker	0	0	0.0	8	*	**	29	6	20.7			
Unknown	0	0	0.0	3	0	0.0	22	*	**			
Payee for births												
AHCCCS	36	*	**	1,435	102	7.1	4,072	296	7.3			
IHS	2	0	0.0	46	*	**	97	*	**			
Private insurance	5	0	0.0	199	16	8.0	512	38	7.4			
Self-pay	2	0	0.0	82	6	7.3	116	8	6.9			
Unknown	1	0	0.0	8	*	**	10	*	**			
Length of gestation												
36 weeks or less	8	*	**	159	82	51.6	396	223	56.3			
37 weeks or more	37	0	0.0	1,607	44	2.7	4,404	124	2.8			
Unknown	1	0	0.0	4	*	**	7	0	0.0			
Prenatal visits												
Less than 5	7	*	**	158	23	14.6	316	37	11.7			
5 or more	33	*	**	1,520	88	5.8	4,245	278	6.5			
Unknown	2	0	0.0	30	*	**	73	6	8.2			

Notes: * Cell suppressed due to non-zero count less than 6; ** Cell suppressed due to rate/ratio/percent based on non-zero count less than 6.

**TABLE 31
POPULATION OF FEMALES 19 OR YOUNGER, NUMBER OF PREGNANCIES AND PREGNANCY
RATES BY AGE GROUP, AND RACE/ETHNICITY, ARIZONA, 2014**

	POPULATION				
	All 19 years or younger	10-14 years	15-19 years	15-17 years	18-19 years
All groups	445,214	225,080	220,134	132,176	87,958
White non-Hispanic	194,461	97,169	97,292	58,644	38,648
Hispanic or Latino	171,913	88,336	83,577	50,025	33,552
Black or African American	29,053	14,554	14,499	8,690	5,809
American Indian or Alaska Native	32,969	16,490	16,479	9,828	6,651
Asian or Pacific Islander	16,818	8,531	8,287	4,989	3,298

Note: The 2014 population denominators are population estimates.

	NUMBER OF PREGNANCIES				
	All 19 years or younger	10-14 years	15-19 years	15-17 years	18-19 years
All groups	7,924	70 [†]	7,856	2,125	5,731
White non-Hispanic	2,255	15	2,240	481	1,759
Hispanic or Latino	4,370	30	4,340	1,262	3,078
Black or African American	490	7	483	138	345
American Indian or Alaska Native	634	11	623	206	417
Asian or Pacific Islander	90 [†]	*	90	23	67

	PREGNANCY RATES PER 1,000 FEMALES				
	All 19 years or younger	10-14 years	15-19 years	15-17 years	18-19 years
All groups	17.8	0.3	35.7	16.1	65.2
White non-Hispanic	11.6	0.2	23.0	8.2	45.5
Hispanic or Latino	25.4	0.3	51.9	25.2	91.7
Black or African American	16.9	0.5	33.3	15.9	59.4
American Indian or Alaska Native	19.2	0.7	37.8	21.0	62.7
Asian or Pacific Islander	5.5	**	10.9	4.6	20.3

Notes: * Cell suppressed due to non-zero count less than 6; ** Cell suppressed due to rate/ratio/percent based on non-zero count less than 6; [†] sum rounded to nearest tens unit due to addend less than 6.

**TABLE 32
POPULATION OF FEMALES 19 OR YOUNGER BY COUNTY OF RESIDENCE, ARIZONA, 2014**

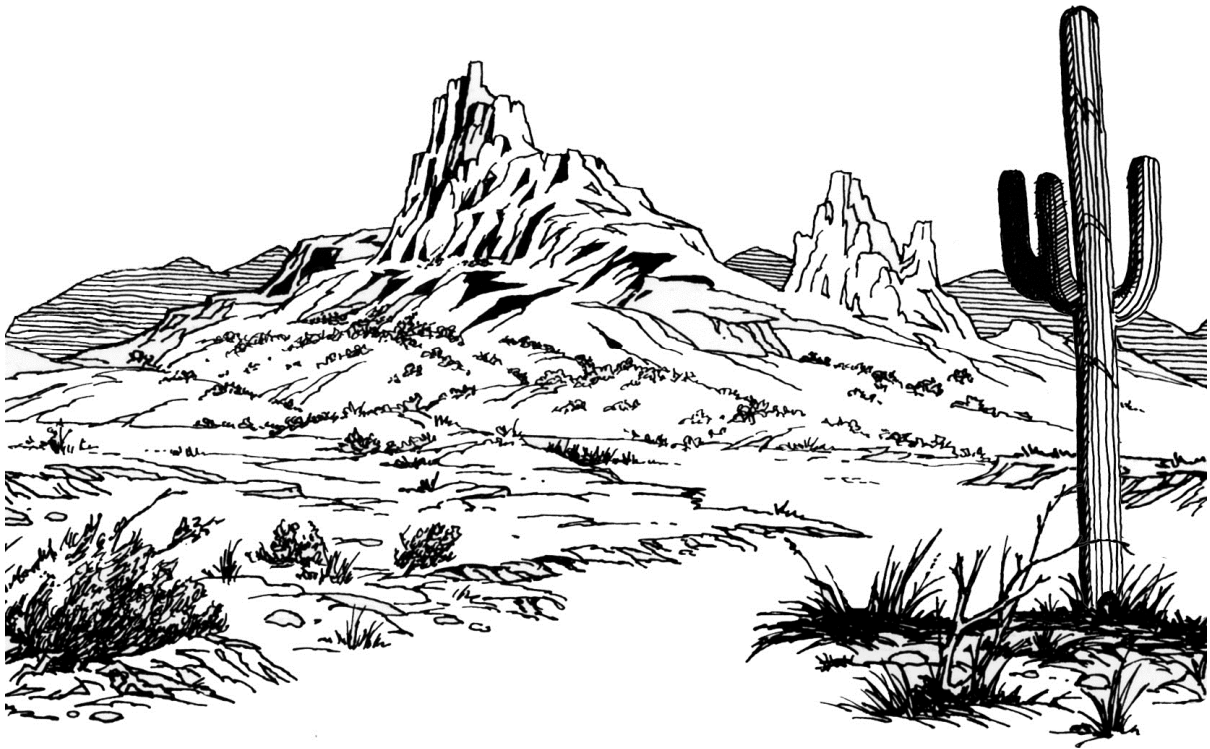
	All 19 years or younger	10-14 years	15-19 years		
			15-19 years	15-17 years	18-19 years
ARIZONA	445,214	225,080	220,134	132,176	87,958
Apache	5,975	3,041	2,934	1,775	1,159
Cochise	7,809	3,933	3,876	2,317	1,559
Coconino	11,125	4,104	7,021	2,517	4,504
Gila	2,968	1,525	1,443	903	540
Graham	2,808	1,497	1,311	814	497
Greenlee	745	392	353	234	119
La Paz	958	471	487	305	182
Maricopa	273,088	140,240	132,848	82,419	50,429
Mohave	10,810	5,611	5,199	3,363	1,836
Navajo	8,224	4,217	4,007	2,525	1,482
Pima	64,847	30,849	33,998	18,174	15,824
Pinal	25,556	13,961	11,595	7,557	4,038
Santa Cruz	4,048	2,049	1,999	1,237	762
Yavapai	10,839	5,458	5,381	3,422	1,959
Yuma	15,414	7,732	7,682	4,614	3,068

Note: Population denominator tables can be found:
<http://www.azdhs.gov/plan/>

**APPENDIX
HOW TO COMPUTE THE RATES OF FIRST AND REPEAT CHILDBEARING**

	2004	2005	2006	2007	2008	2009	2010	2011	2012	2013	2014	Comments
A. The number of females 15-19 years old	200,676	208,105	213,698	215,079	218,545	220,555	224,302	225,857	227,395	228,652	220,134	Genus enumerations for 2010; population estimates for 2004-2014.
B. The number of births to females 15-19 years old	11,676	11,748	12,746	12,792	12,000	10,820	9,311	8,334	8,050	7,151	6,577	Based on the birth database.
C. The rate of births (B/A)*1,000	58.2	56.5	59.6	59.4	54.9	49.1	41.5	36.9	35.4	31.3	29.9	The number of births per 1,000 females 15-19 years old.
D. Cumulative number of mothers who gave birth when 15-19 years old	25,568	25,761	26,916	27,486	26,958	25,352	25,892	19,816	17,929	16,031	14,384	Mothers who gave birth when 15-19 years old. As an example, the 2014 cohort of mothers who were 15-19 years old includes 6,577 who gave birth that year and 8,307 who gave birth prior to 2014 and were still 15-19 years old in 2014 (Table 13).
E. The number of females 15-19 years old who had a birth previously (D-B)	13,892	14,013	14,170	14,694	14,958	14,532	16,581	11,482	9,879	8,880	7,807	The cumulative number of mothers 15-19 years old (Table 13) minus those who gave birth that year.
F. The number of repeat births to females 15-19 years old who had a birth previously	2,590	2,488	2,864	2,800	2,658	2,252	1,898	1,639	1,521	1,300	1,161	Table 1B-23 in "Arizona Health Status and Vital Statistics" annual report.
G. The rate of repeat childbearing (F/E)*1,000	186.4	177.5	202.1	190.6	177.7	155.0	114.5	142.7	154.0	146.4	148.7	The number of repeat births per 1,000 females 15-19 years old who had a birth previously.
H. The number of females 15-19 years old who did not have a birth previously (A-E)	186,784	194,092	199,528	200,385	203,587	206,023	207,721	214,375	217,516	219,772	212,327	All 15-19 years old - those who gave birth previously.
I. The number of first-time births to females 15-19 years old who did not have a birth previously	9,071	9,259	9,880	9,992	9,342	8,568	7,409	6,683	6,522	5,844	5,414	Table 1B-23 in "Arizona Health Status and Vital Statistics" annual report.
J. The rate of first-time births (I/H)*1,000	48.6	47.7	49.5	49.9	45.9	41.6	35.7	31.2	30.0	26.6	25.5	The number of first-time births per 1,000 females 15-19 years old who did not have a birth previously.

Our Web site at <http://www.azdhs.gov/plan> provides access to a wide range of statistical information about the health status of Arizonans. The Arizona Health Status and Vital Statistics annual report examines trends in natality, mortality, and morbidity towards established health objectives. In addition to the print and original online versions, the 2014 report is made available as a mobile-friendly e-book. Additional reports and studies include Advance Vital Statistics by County of Residence, Injury Mortality among Arizona Residents (accidents, suicides, homicides, legal intervention, firearm-related fatalities, drug-related deaths, drowning deaths, falls among Arizonans 65 years or older), Hospital Inpatient and Emergency Room Statistics (first-listed diagnosis, procedures, mental disorders, asthma, diabetes, influenza and pneumonia, and substance abuse), Community Vital Statistics, Teenage Pregnancy, Differences in Health Status Among Racial/Ethnic Groups, and Health Status Profile of American Indians in Arizona.



**Population Health and Vital Statistics Section
Bureau of Public Health Statistics
ARIZONA DEPARTMENT OF HEALTH SERVICES**