

TEENAGE PREGNANCY ARIZONA, 2005-2015



ARIZONA DEPARTMENT
OF HEALTH SERVICES

~ Health and Wellness for all Arizonans ~



**Douglas A. Ducey, Governor
State of Arizona**

**Cara M. Christ, M.D., M.S., Director
Arizona Department of Health Services**

**ARIZONA DEPARTMENT OF HEALTH SERVICES
BUREAU OF PUBLIC HEALTH STATISTICS
POPULATION HEALTH AND VITAL STATISTICS SECTION**

150 North 18th Avenue, Suite 550

Phoenix, Arizona 85007

Phone: 602-542-7333; FAX: 602-542-2940

www.azdhs.gov/plan

**This publication can be made available in alternative format.
Please contact the Bureau of Public Health Statistics
at 602-542-7333 (voice) or call 1-800-367-8939 (TDD).**

***The Arizona Department of Health Services is
an Equal Employment Opportunity Agency.***

***Permission to quote from or reproduce materials from this
publication is granted when due acknowledgment is made.***

TEENAGE PREGNANCY, ARIZONA, 2005-2015

by

**Marguerite L. Sagna, Ph.D., Arizona Vital Statistician
Sanhita Gupta, Vital Statistics Health Management Analyst
Clare Torres, Senior Health Data Analyst**

January 2017

TEENAGE PREGNANCY, ARIZONA, 2005-2015

Table of Contents

PURPOSE	1
METHODS AND SOURCES	1
DATA ORGANIZATION	1
COMPARATIVE NATIONAL AND STATE DATA	2
KEY FINDINGS	2
DATA TABLES	11

List of Figures

Figure 1	3
PREGNANCY RATES BY AGE GROUP AND YEAR AMONG FEMALES 19 OR YOUNGER, ARIZONA, 2005-2015	
Figure 2	3
TRENDS IN THE NUMBER OF PREGNANCIES AND PREGNANCY RATES AMONG FEMALES 19 OR YOUNGER, ARIZONA, 2005-2015	
Figure 3	4
TRENDS IN THE NUMBER OF PREGNANCIES BY RACE/ETHNICITY AMONG FEMALES 19 OR YOUNGER, ARIZONA, 2005-2015	
Figure 4	4
COMPARISON OF PREGNANCY RATES BY YEAR AMONG HISPANIC OR LATINOS AND ALL FEMALES 19 OR YOUNGER, ARIZONA, 2005-2015	
Figure 5	5
COMPARISON OF PREGNANCY RATES BY YEAR AMONG WHITE NON-HISPANICS AND ALL FEMALES 19 OR YOUNGER, ARIZONA, 2005-2015	
Figure 6	5
COMPARISON OF PREGNANCY RATES BY YEAR AMONG AMERICAN INDIAN OR ALASKA NATIVES AND ALL FEMALES 19 OR YOUNGER, ARIZONA, 2005-2015	
Figure 7	6
COMPARISON OF PREGNANCY RATES BY YEAR AMONG BLACK OR AFRICAN AMERICANS AND ALL FEMALES 19 OR YOUNGER, ARIZONA, 2005-2015	
Figure 8	6
COMPARISON OF PREGNANCY RATES BY YEAR AMONG ASIAN OR PACIFIC ISLANDERS AND ALL FEMALES 19 OR YOUNGER, ARIZONA, 2005-2015	
Figure 9	7
PROPORTIONAL CONTRIBUTION OF SURGICAL AND NON-SURGICAL ABORTIONS BY YEAR AMONG FEMALES 19 OR YOUNGER, ARIZONA, 2005-2015	
Figure 10	7
CUMULATIVE NUMBER OF MOTHERS WHO WERE 19 OR YOUNGER IN ARIZONA BY YEAR, 2005-2015	
Figure 11	8
RATES OF FIRST AND REPEAT BIRTHS TO FEMALES 15-19 YEARS, ARIZONA, 2005 AND 2015	
Figure 12	8
BIRTHS TO MOTHERS 19 OR YOUNGER BY MARITAL STATUS, ARIZONA, 1995, 2005, AND 2015	
Figure 13	9
NUMBER OF BIRTHS TO MOTHERS 19 OR YOUNGER BY PAYEE, ARIZONA, 2005 AND 2015	
Figure 14	9
TRENDS IN THE INCIDENCE OF SEXUALLY TRANSMITTED INFECTIONS AMONG FEMALES 15-19 YEARS, ARIZONA, 2005-2015	
Figure 15	10
BIRTH RATES FOR TEENAGERS 15-19 YEARS, NATIONALLY AND IN ARIZONA, 2005-2015	
Figure 16	10
BIRTH RATES FOR HISPANIC OR LATINO TEENAGERS 15-19 YEARS, NATIONALLY AND IN ARIZONA, 2005-2015	

List of Tables

Table 1	12
PREGNANCIES AND PREGNANCY OUTCOME BY AGE GROUP AND YEAR, FEMALES 19 OR YOUNGER, ARIZONA, 2005-2015	
Table 2	13
PREGNANCY RATES BY PREGNANCY OUTCOME, AGE GROUP, AND YEAR, FEMALES 19 OR YOUNGER, ARIZONA, 2005-2015	
Table 3	14
LIVE BIRTHS TO FEMALES 19 OR YOUNGER BY AGE GROUP, RACE/ETHNICITY, AND YEAR, ARIZONA, 2005-2015	
Table 4	15
ABORTIONS TO FEMALES 19 OR YOUNGER BY AGE GROUP, RACE/ETHNICITY, AND YEAR, ARIZONA, 2005-2015	
Table 5	16
NUMBER OF PREGNANCIES BY PREGNANCY OUTCOME, RACE/ETHNICITY, AND YEAR AMONG FEMALES AGE 17 OR YOUNGER WITH RATES, ARIZONA, 2005-2015	
Table 6	17
NUMBER OF PREGNANCIES BY PREGNANCY OUTCOME, RACE/ETHNICITY, AND YEAR AMONG FEMALES 15-17 YEARS OLD WITH RATES, ARIZONA, 2005-2015	
Table 7	18
NUMBER OF PREGNANCIES BY PREGNANCY OUTCOME, RACE/ETHNICITY, AND YEAR AMONG FEMALES 18-19 YEARS OLD WITH RATES, ARIZONA, 2005-2015	
Table 8	19
NUMBER OF PREGNANCIES BY PREGNANCY OUTCOME, RACE/ETHNICITY, AND YEAR AMONG FEMALES 19 OR YOUNGER WITH RATES, ARIZONA, 2005-2015	
Table 9	20
TRENDS IN PREGNANCY RATES BY COUNTY OF RESIDENCE AMONG FEMALES 10-17 YEARS, 18-19 YEARS, AND 19 YEARS OR YOUNGER, ARIZONA, 2005-2015	
Table 10	21
LIVE BIRTHS TO FEMALES 19 OR YOUNGER AS A PERCENTAGE OF TOTAL LIVE BIRTHS BY AREA, RACE/ETHNICITY, AND YEAR, ARIZONA, 2005-2015	
Table 11	22
BIRTH RATES BY AGE GROUP FOR FEMALES 19 OR YOUNGER, ARIZONA AND UNITED STATES, 2005-2015	
Table 12	23
REPEAT PREGNANCIES AMONG TEENAGE MOTHERS GIVING BIRTH BY AGE AND YEAR, ARIZONA, 2005-2015	
Table 13	24
CUMULATIVE NUMBER OF MOTHERS WHO WERE 19 OR YOUNGER IN ARIZONA IN 2015	
Table 14	25
TRENDS IN TEEN PREGNANCY RATES BY RACE/ETHNICITY AND AGE GROUP, ARIZONA, 2005-2015	
Table 15	26
TRENDS IN SEXUALLY TRANSMITTED INFECTIONS BY AGE GROUP AND YEAR AMONG FEMALES 10-19 YEARS, ARIZONA, 2005-2015	
Table 16	27
TRENDS IN THE INCIDENCE RATES OF SEXUALLY TRANSMITTED INFECTIONS BY AGE GROUP AND YEAR AMONG FEMALES 10-19 YEARS, ARIZONA, 2005-2015	
Table 17	28
PREGNANCIES AND PREGNANCY RATES OF FEMALES 19 OR YOUNGER BY COUNTY OF RESIDENCE, ARIZONA, 2015	
Table 18	29
BIRTHS AND BIRTH RATES, FEMALES 19 OR YOUNGER BY COUNTY OF RESIDENCE, ARIZONA, 2015	
Table 19	30
PREGNANCY RATES AND NUMBER OF LIVE BIRTHS, FETAL DEATHS, AND ABORTIONS TO TEENS BY INDIVIDUAL AGE, ARIZONA, 2015	
Table 20	31
BIRTHS TO FEMALES 19 OR YOUNGER BY AGE AND COUNTY OF RESIDENCE, ARIZONA, 2015	
Table 21	32
ABORTIONS TO FEMALES 19 OR YOUNGER BY AGE AND COUNTY OF RESIDENCE, ARIZONA, 2015	

List of Tables (continued)

Table 22	33
SOURCES OF PAYMENT FOR LABOR AND DELIVERY, FEMALES 19 OR YOUNGER BY AGE, AND COUNTY OF RESIDENCE, ARIZONA, 2015	
Table 23	34
SOURCES OF PAYMENT FOR LABOR AND DELIVERY, FEMALES 19 OR YOUNGER BY AGE GROUP, ARIZONA, 2015	
Table 24	35
TEENAGE BIRTHS BY NUMBER OF PREVIOUS PREGNANCIES BY AGE GROUP, ARIZONA, 2015	
Table 25	35
TEENAGE BIRTHS BY MARITAL STATUS AND AGE GROUP, ARIZONA, 2015	
Table 26	35
TEENAGE BIRTHS BY MOTHER'S EDUCATION AND AGE GROUP, ARIZONA, 2015	
Table 27	36
TEENAGE BIRTHS BY TRIMESTER OF ENTRY INTO PRENATAL CARE AND AGE GROUP, ARIZONA, 2015	
Table 28	36
TEENAGE BIRTHS BY NUMBER OF PRENATAL VISITS AND AGE GROUP, ARIZONA, 2015	
Table 29	37
TOBACCO AND/OR ALCOHOL USE DURING PREGNANCY AMONG FEMALES 19 OR YOUNGER BY AGE GROUP, ARIZONA, 2015	
Table 30	38
RISK FOR LOW-BIRTHWEIGHT (LBW) BIRTHS BY SELECTED CHARACTERISTICS OF FEMALES 19 OR YOUNGER, ARIZONA, 2015	
Table 31	39
POPULATION OF FEMALES 19 OR YOUNGER, NUMBER OF PREGNANCIES AND PREGNANCY RATES BY AGE GROUP, AND RACE/ETHNICITY, ARIZONA, 2015	
Table 32	40
POPULATION OF FEMALES 19 OR YOUNGER BY COUNTY OF RESIDENCE, ARIZONA, 2015	
Appendix	41
HOW TO COMPUTE THE RATES OF FIRST AND REPEAT CHILDBEARING	

PURPOSE

This report is the annual update of information about pregnancies among females under age 20. The data for 2015 is placed in a temporal context by comparing it with the data from the preceding years. Earlier reports are available online at <http://www.azdhs.gov/plan/report/tp/index.php>.

METHODS AND SOURCES

In this report, pregnancies are measured as the sum of three components: live births, fetal deaths (or stillbirths), and reported abortions to Arizona resident women, unless otherwise specified. Not included are spontaneous fetal losses that occur at less than 20 weeks of gestation. Induced terminations of pregnancy do not include those performed out-of-state to Arizona residents, since they are not reported in Arizona. Pregnancy statistics for Arizona are not available on a sub-county level.

Teens are defined as 10-14 year old preadolescents and adolescents 15-19 years of age. Where possible, the data presented distinguishes 18-19 year old teenagers from those aged 15-17 and girls less than 15 years of age.

The primary source documents for the data are the certificates of live births, certificates of fetal deaths, and reports of induced terminations of pregnancy filed with the Arizona Department of Health Services.

The population denominators for Arizona's resident females used to calculate rates for 2003-2009 and 2011-2015 are population estimates of Arizona resident females aged 10-19 years. The 2010 denominators are the actual census enumerations from the U.S. Census Bureau. Detailed information about the assumptions and specific data sources is available online at <http://www.azdhs.gov/plan/menu/info/pop/index.php>.

The 2015 Teenage Pregnancy report suppresses information in tables with small cell sizes. To protect the anonymity of the individuals included in this report, cells in tables with five or fewer observations are denoted by an asterisk (*), cells containing rates based on counts of five or fewer are denoted by a double-asterisk (**), and cells containing sums based on addends of five or fewer are rounded to the nearest tens-unit and denoted by a dagger (†).

DATA ORGANIZATION

Tables 1-14 present annual numbers and rates of pregnancy, fertility, and abortion by year from 2005 to 2015 for Arizona teens. Information is presented for specific age groups and by race/ethnicity. Temporal trends and changes may be assessed from this data. Proportional contribution of teen births to all births is shown in Table 10 by area of residence and race/ethnic group in Arizona from 2005 to 2015. Table 11 compares birth rates in Arizona to those in the United States. The annual numbers of repeat pregnancies among teenage mothers are shown by age and year from 2005 to 2015 in Table 12.

Table 14 presents teen pregnancy rates by race/ethnicity and age group by year from 2005 to 2015. Table 15 provides information about the incidence of sexually transmitted infections among females 10-14 and 15-19 years old in Arizona in 2005-2015. Table 16 shows the incidence rates by year from 2005 to 2015.

Frequency counts, proportions, and rates in Tables 17-32 all apply to the 2015 data. Tables 17-18 and 20-22 provide data by county of residence. Table 19 presents pregnancy rates by single year of age among females 19 and younger. Live births to teenage mothers are also reported in Tables 23-30 by source of payment for labor and delivery, previous pregnancies, marital status, education, trimester of entry into prenatal care, number of prenatal visits, tobacco use during pregnancy, and risk for low-birthweight by selected characteristics. The 2015 population denominators for Arizona resident females by age group and race/ethnicity, as well as by age group and county of residence, are presented in Table 31 and Table 32. The *Appendix* demonstrates "How to compute the rates of first and repeat childbearing" using the annual data for 2005-2015.

COMPARATIVE NATIONAL AND STATE DATA

Timely, comparable, and reliable teen pregnancy statistics for other States and the Nation provide meaningful comparisons to place Arizona's teenage birth experiences in context. The Center for Disease Control (CDC) provides a useful source of information on national pregnancy outcomes. The most recent national abortion data provided by the CDC available is for 2013¹ and the most recent fetal death data distributed by the CDC is available for 2014². Another source of national data on reproductive health is the Guttmacher Institute. The latest report³, published by the Institute in April 2016, covers statistics available on the incidence of teen pregnancy, birth and abortion in the United States for 2011, with trend analysis since 1973. The authors present the complete count of births provided by every state to the NCHS in combination with the estimated numbers of abortions, early miscarriages, and fetal deaths. The number of abortions is estimated from surveys the Alan Guttmacher Institute conducts of known abortion providers (i.e. these data are by the place of occurrence and not by the woman's place of residence). The fetal loss estimates – including early miscarriages before 20 weeks of gestation (and estimated as 20% of live births plus 10% of abortions) – are from pregnancy history information collected by the National Survey of Family Growth (NSFG). Unlike vital statistics reports of fetal losses occurring at gestations of 20 weeks or more, NSFG include all gestations. Since the majority of fetal losses occur early in pregnancy before the reporting requirements for fetal deaths are in effect, their inclusion dramatically raises both the fetal loss rate and the pregnancy rate. The National Survey of Family Growth data are not state-specific. The pregnancy rates for Arizona teens cannot be compared with the rates for their peers nationally.

No comparable state-by-state teen pregnancy data for 2005 – 2015 are available at this time.

KEY FINDINGS

The following section presents some illustrative findings contained in the figures and tables of the report. It is not intended to be an exhaustive analysis of the tabulated data.

- **In 2015, the pregnancy rate of 15.9 pregnancies per 1,000 females 19 years or younger was 51.3 percent lower than the rate of 32.7 per 1,000 in 2005. The teen pregnancy rate of 15.9 per 1,000 females 19 years or younger was the lowest teen pregnancy rate since at least 1983.**
- **It is only since 2008 that the reduction in the number of teen pregnancies was accompanied by an equally impressive decline in pregnancy rates.**
- **Historically, the declines in teenage pregnancy have been steeper for younger than for older teenagers, but recently are becoming more closely aligned. The rate for teenagers 15-17 years dropped steeply by 63.9 percent from 39.1 per 1,000 in 2005 to 14.1 in 2015. The rate for older teenagers (aged 18-19 years) fell by 43.6 percent from 103.6 per 1,000 in 2005 to 58.4 per 1,000 in 2015.**
- **The 2015 teen pregnancy rate of 15.9 per 1,000 was based on 7,121 pregnancies occurring among 447,465 females aged 10-19 years. The number of 7,121 teen pregnancies in 2015 was 10.1 percent lower than 2014 and was the lowest number of teen pregnancies since 1984.**
- **From 2007 to 2015, the number of teen pregnancies declined most among Hispanic or Latino teens (54.3 percent), followed by declines among American Indians (53.7 percent), and White non-Hispanic teens (50.6 percent).**
- **In 2015, Hispanic or Latino females accounted for 54.9 percent of all pregnancies in this age group, followed by White non-Hispanics (28.4 percent).**
- **In each year from 2005 to 2015, the pregnancy rates of Hispanic or Latino females were consistently greater than the average rates for all females 19 years or younger in Arizona. In 2015, the Hispanic rate exceeded the average rate for all groups by 28.2 percent.**
- **If the 2015 "risk of pregnancy" for Asian teens (i.e., their pregnancy rate of 6.3 per 1,000), were to be applied to all Arizona females 19 years or younger, it would reduce the number of Arizona teen pregnancies from 7,121 to just 2,819 ((6.3 per 1,000) * 447,465).**
- **The first birth rate for childless teenagers has dropped 52.8 percent from 47.7 first-time births per 1,000 females 15-19 years old in 2005 to 22.5 per 1,000 in 2015.**
- **The repeat birth rates for teenagers who had already had a child decreased by 19.8 percent from 177.5 in 2005 to 142.3 per 1,000 females 15-19 years old in 2015 who had a previous birth.**
- **Unwed mothers have accounted for an increasing annual proportion of births throughout the 1990s and 2000s. In 2015, non-marital births accounted for 89.6 percent of births to mothers 19 years or younger.**
- **The total number of births to mothers 19 years or younger decreased by 50.7 percent from 11,933 in 2005 to 5,884 in 2015. In contrast, the proportional share of births paid for by the Arizona Health Care Cost Containment System (AHCCCS, the State's Medicaid program) increased from 81.6 percent in 2005 to 82.9 percent in 2015.**

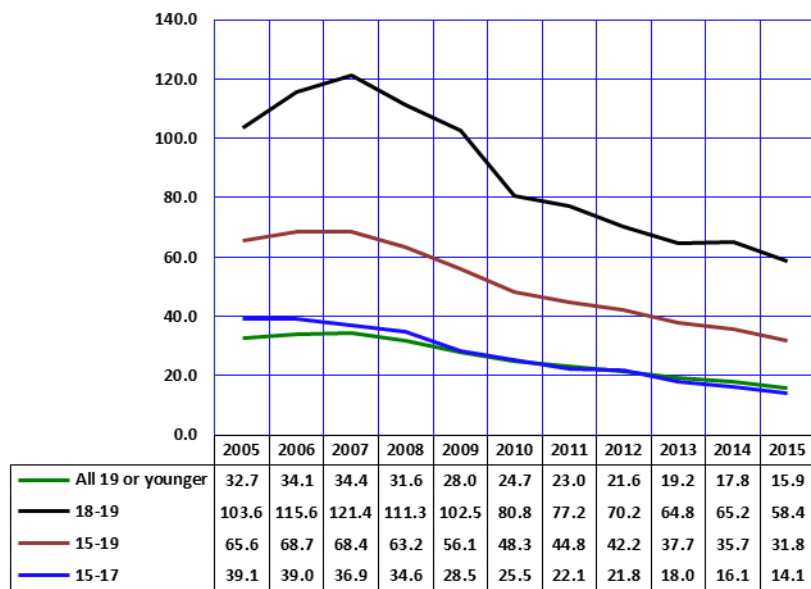
¹<https://www.cdc.gov/mmwr/volumes/65/ss/ss6512a1.htm>

²https://www.cdc.gov/nchs/nvss/fetal_death.htm

³<https://www.guttmacher.org/report/us-teen-pregnancy-trends-2011>

KEY FINDINGS

Figure 1
Pregnancy Rates by Age Group and Year among Females 19 or Younger, Arizona, 2005-2015

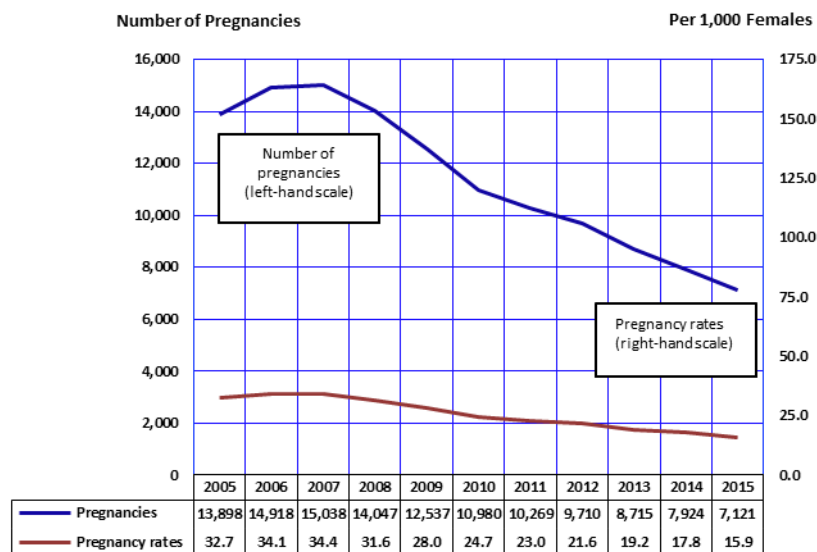


Note: All rates are per 1,000 females in specified group.

Teenage pregnancy rates dropped 51.3 percent overall from 2005 to 2015. (Figure 1, Table 2). The declines in teenage pregnancy have been much steeper for younger than for older teenagers. The rate for teenagers 15-17 years dropped steeply by 63.9 percent from 39.1 per 1,000 in 2005 to 14.1 in 2015. The rate for older teenagers (aged 18-19 years) fell by 43.6 percent from 103.6 per 1,000 in 2005 to 58.4 per 1,000 in 2015.

From 2007 to 2015, birth rate of teenagers 19 years old or younger declined, fetal losses rate fell and remained pretty stable at 0.1 per 1,000 females, while the abortion rate increased from 2010 to 2011 and returned to 3.4 per 1,000 females in 2012 then declined at 2.7 per 1,000 females in 2015 (Table 1). The increase in the teenage abortion rate from 2010 to 2011 is likely attributable to changes in abortion reporting requirements that took effect in 2011.

Figure 2
Trends in the Number of Pregnancies and Pregnancy Rates among Females 19 or Younger, Arizona, 2005-2015



Note: Pregnancy rate = the number of pregnancies per 1,000 females in specified group.

Trends in the number of pregnancies to teenage women do not always parallel the pregnancy rate. The teen pregnancy rate measures the proportion of teenagers becoming pregnant in a given year; in other words, the relative "risk for pregnancy" in a population "at risk." The number of pregnancies is, however, also determined by the size of the population "at risk," or in this case by the number of teenage females in the population.

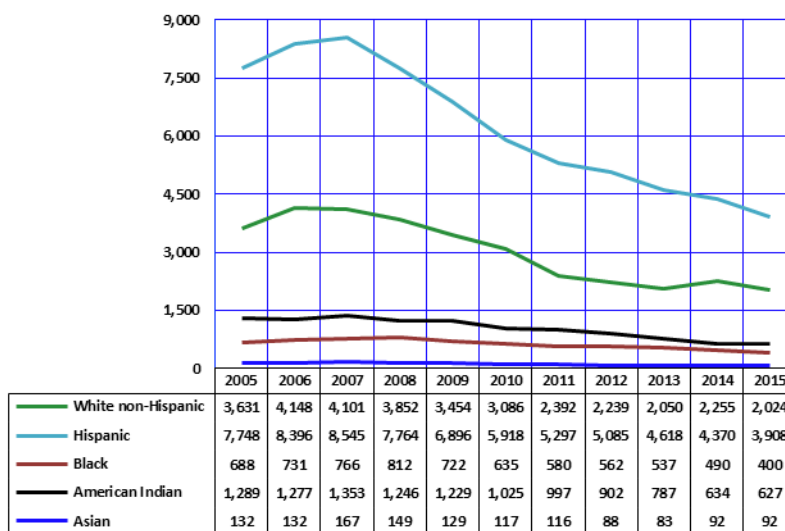
The 2015 teen pregnancy rate of 15.9 per 1,000 was based on 7,121 pregnancies occurring among 447,465 females aged 10-19 years. The number of 7,121 teen pregnancies in 2015 was 10.1 percent lower than 2014 and was the lowest number of teen pregnancies since 1984.

KEY FINDINGS

Figure 3
Trends in the Number of Pregnancies* by Race/Ethnicity among Females 19 or Younger, Arizona, 2005-2015

The number of pregnancies to Hispanic females aged 19 years or younger exceeded the number of pregnancies among White non-Hispanic peers in every year since 1994 (**Figure 3** and **Table 8** in this report show only the data for 2005-2015). In 2015, Hispanic or Latino females accounted for 54.9 percent of all pregnancies in this age group, followed by White non-Hispanics (28.4 percent). Black or African American, Asian or Pacific Islander, and American Indian females aged 19 years or younger accounted for a larger share of pregnancies in 2015 (15.7 percent) than they did in 2005 (15.2 percent).

From 2007 to 2015, the number of teen pregnancies declined particularly steeply for American Indians (53.7 percent), Hispanic or Latino (54.3 percent), and White non-Hispanic (50.6 percent).



Note: The sum of live births + induced abortions + spontaneous fetal deaths.

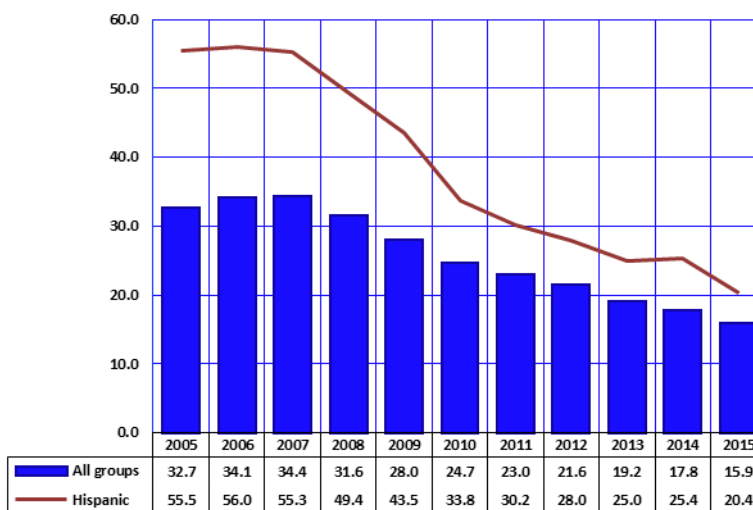
Figure 4
Comparison of Pregnancy Rates by Year among Hispanic or Latinos and all Females 19 or Younger, Arizona, 2005-2015

The teen pregnancy rates for all race and ethnic groups were lower in 2015 than in 2005 (**Figure 1**). However, the temporal trends in annual teen pregnancy rates differed considerably by race/ ethnicity.

Figures 4, 5, 6, 7, and 8 reveal race/ ethnicity-specific trends in teen pregnancy rates in Arizona in 2005-2015.

From 2005 to 2015, the teenage pregnancy rate for Hispanic or Latino women declined more than 50 percent (63.2 percent), with the majority of the decline occurring between 2007 and 2015 (**Figure 4**).

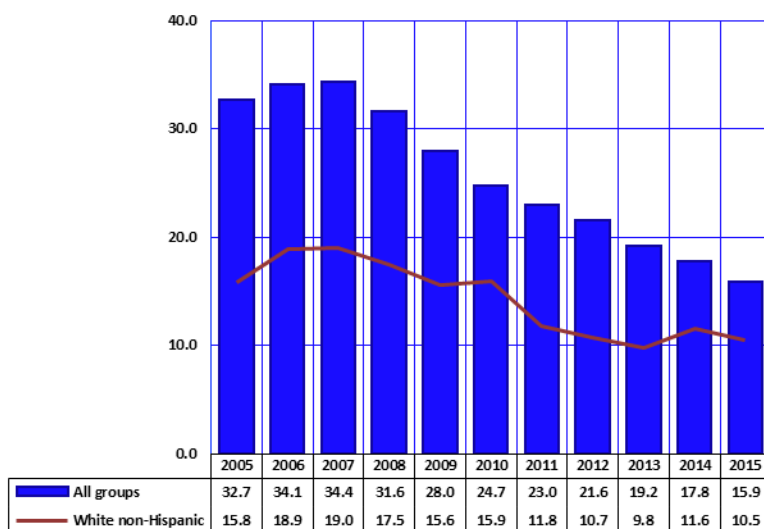
In each year from 2005 to 2015, the pregnancy rates of Hispanic or Latino females were consistently greater than the average rates for all females 19 years or younger in Arizona. In 2015, the Hispanic rate exceeded the average rate for all groups by 28.2 percent.



Note: All rates are per 1,000 females in specified group.

KEY FINDINGS

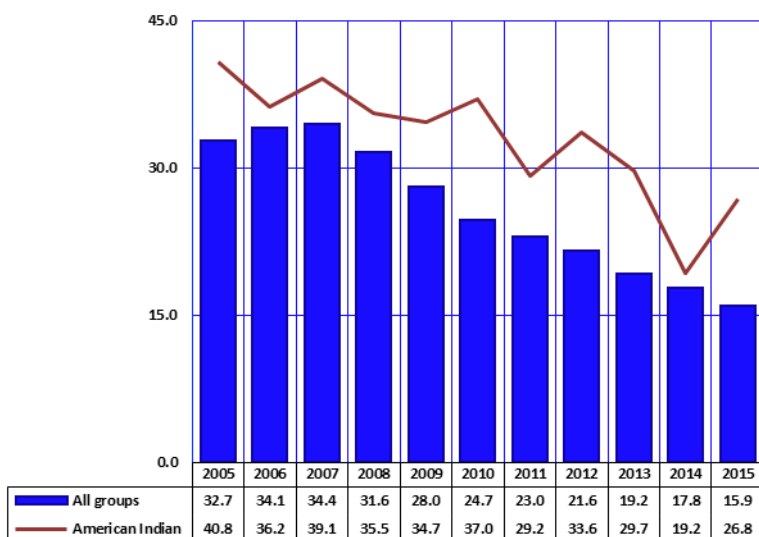
Figure 5
Comparison of Pregnancy Rates by Year among White non-Hispanics
and all Females 19 or Younger, Arizona, 2005-2015



The pregnancy rate for White non-Hispanics has substantially declined from 2005 to 2015 (33.5 percent), save for an increase from 2006 to 2008 (**Figure 5**). In each year from 2005 to 2015, the pregnancy rates for White non-Hispanic females were lower than the average rates for all females 19 years or younger in Arizona.

Note: All rates are per 1,000 females in specified group.

Figure 6
Comparison of Pregnancy Rates by Year among American Indian
or Alaska Natives and all Females 19 or Younger, Arizona, 2005-2015



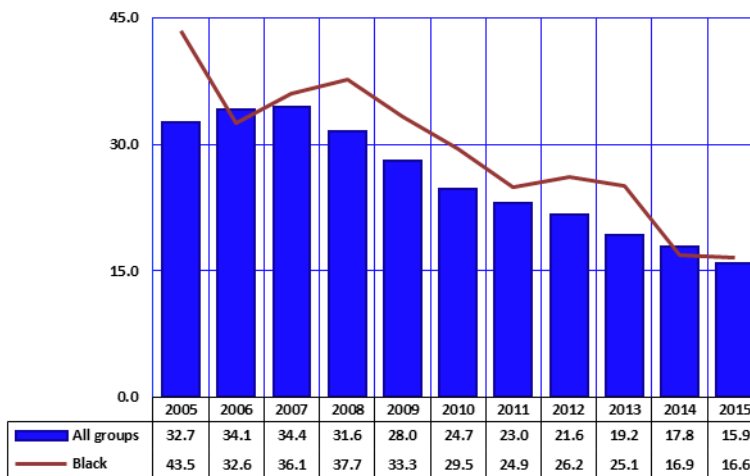
The pregnancy rate among American Indian females 19 years or younger varied somewhat erratically from 2005 to 2015, showing a 21.1 percent decrease from 2010 to 2011, a 15.1 percent increase from 2011 to 2012, a 35.4 decline from 2013 to 2014, then an increase in 2015 (**Figure 6**). The American Indian teenage pregnancy rate was higher than the average for all groups from 2005 to 2015.

Note: All rates are per 1,000 females in specified group.

KEY FINDINGS

Figure 7
Comparison of Pregnancy Rates by Year among Black or African Americans and all Females 19 or Younger, Arizona, 2005-2015

Pregnancy rates for Black or African American females 19 years or younger decreased from 43.5 per 1,000 in 2005 to 16.6 per 1,000 in 2015 (Figure 7). Excluding 2006 and 2014, the pregnancy rates for Black or African American teenagers exceeded the pregnancy rate for all groups.

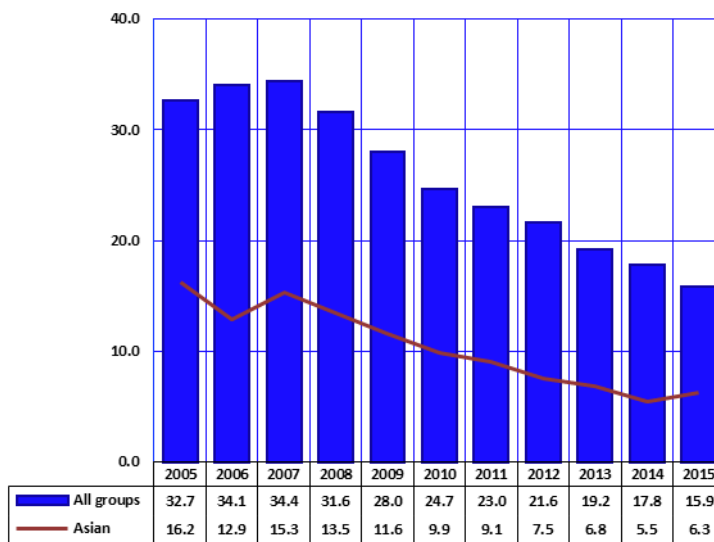


Note: All rates are per 1,000 females in specified group.

Figure 8
Comparison of Pregnancy Rates by Year among Asian or Pacific Islanders and all Females 19 or Younger, Arizona, 2005-2015

In each year from 2005 to 2015, the pregnancy rates for Asian or Pacific Islander females 19 years or younger were substantially lower than the average rates among all females 19 years or younger in Arizona (Figure 8). In 2015, the Asian rate (6.3 per 1,000) was 60.4 percent lower than the rate for all groups (15.9 per 1,000).

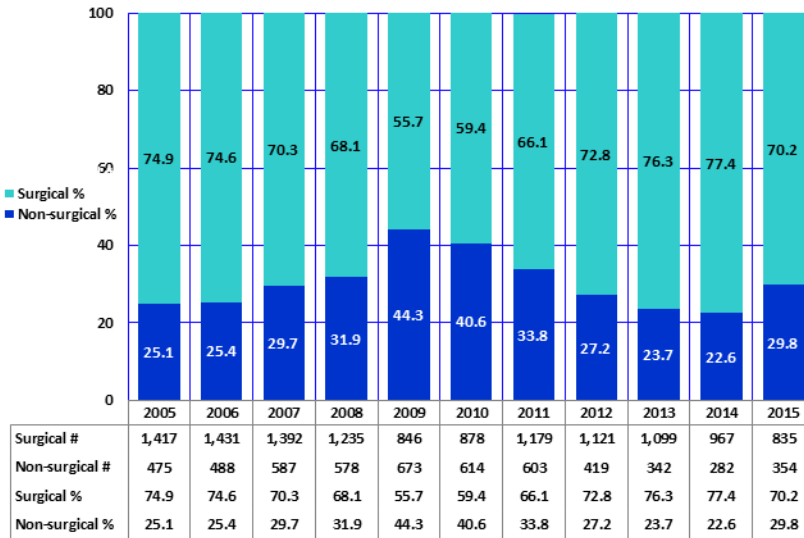
If the 2014 "risk for pregnancy" of Asian teens (i.e., their pregnancy rate) applied to all Arizona females 19 years or younger, the number of teen pregnancies in the State would have been reduced from 7,121 to approximately 2,819((6.3 per 1,000) * 447,465) .



Note: All rates are per 1,000 females in specified group.

KEY FINDINGS

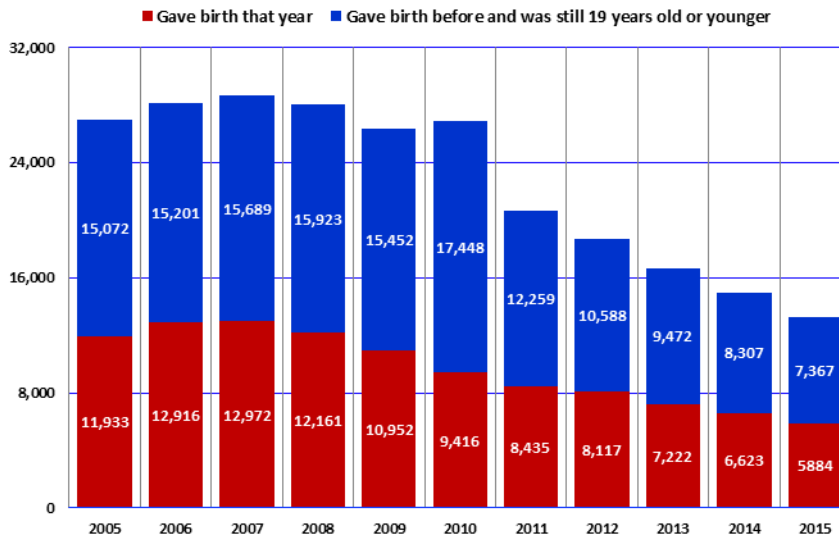
Figure 9
Proportional Contribution of Surgical and Non-Surgical Abortions
by Year among Females 19 or Younger, Arizona, 2005-2015



The proportion of non-surgical abortions to females 19 years or younger decreased from 40.6 percent in 2010 to 29.8 percent in 2015, indicating the proportion of surgical abortions decreased 4.9 percent over that period (**Figure 9**).

Note: Non-surgical: Mifepristone, Methotrexate, RU486, etc.

Figure 10
Cumulative Number of Mothers who were 19 or Younger
in Arizona by Year, 2005-2015



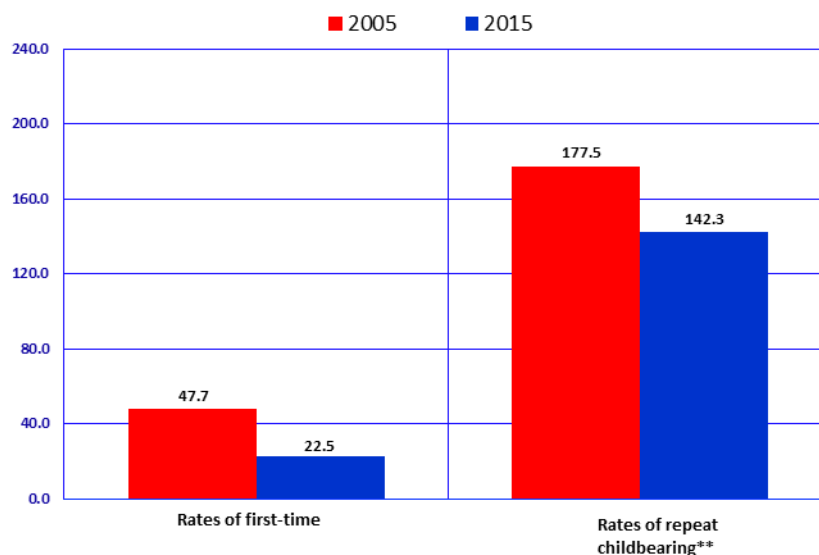
There were approximately 13,251 mothers under the age of 20 in Arizona in 2015. Among them there were the 5,884 who gave birth in 2015 and the 7,367 who gave birth prior to 2015 and were still 19 years old or younger in 2015 (**Figure 10, Table 13**). The cumulative number of mothers who were 19 years or younger in Arizona in 2015 decreased by 50.7 percent from 26,864 in 2010.

KEY FINDINGS

Figure 11
Rates of First and Repeat Births to Females 15-19 Years, Arizona, 2005 and 2015

The first birth rate for childless teenagers has dropped 52.8 percent from 47.7 first-time births per 1,000 females 15-19 years old in 2005 to 22.5 per 1,000 in 2015 (**Figure 12**).

The repeat birth rates for teenagers who had already had a child decreased by 19.8 percent from 177.5 in 2005 to 142.3 per 1,000 females 15-19 years old in 2015 who had a previous birth (**Figure 12**).



Notes: * Number of first births per 1,000 females 15-19 years old who have not had a birth; ** Number of repeat births per 1,000 females 15-19 years old who have had a previous birth; See *Appendix "How to compute rates of first and repeat childbearing."*

Figure 12
Births to Mothers 19 or Younger by Marital Status, Arizona, 1995, 2005, and 2015

Unwed mothers have accounted for an increasing annual proportion of births throughout the 1990s and 2000s. Two decades ago, more than 7 out of 10 teenage mothers were unmarried (**Figure 13**). In 2015, non-marital births accounted for 89.6 percent of births to mothers 19 years or younger.

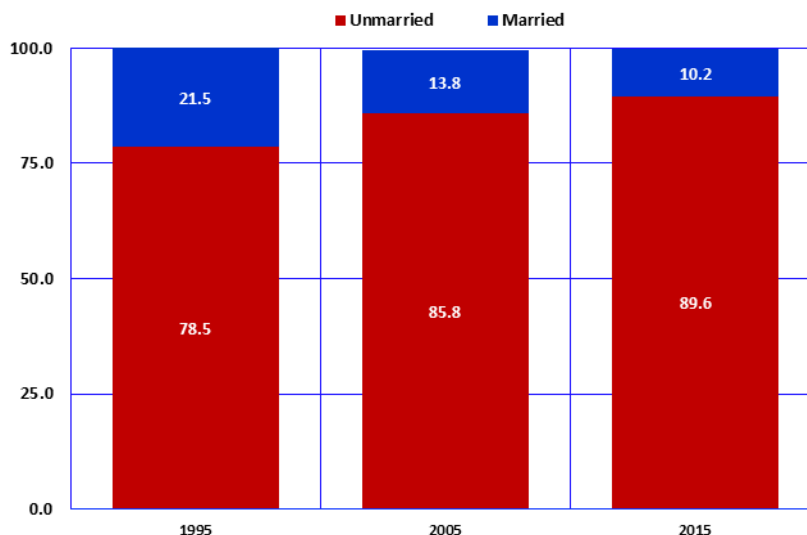
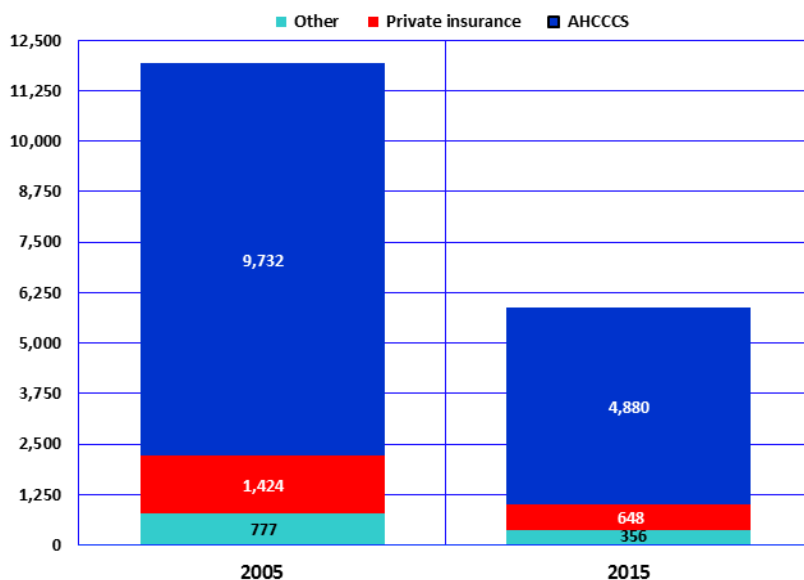
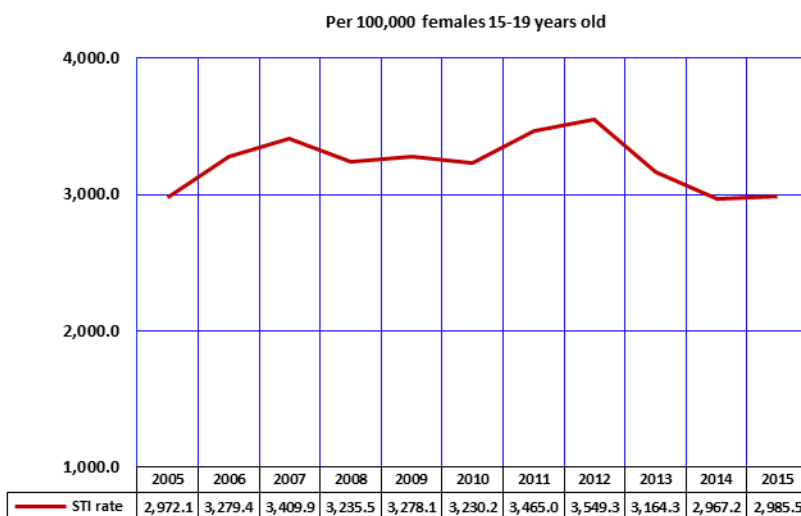


Figure 13
Number of Births to Mothers 19 or Younger by Payee, Arizona, 2005 and 2015



The total number of births to mothers 19 years or younger decreased by 50.7 percent from 11,933 in 2005 to 5,884 in 2015 (**Table 1**). In contrast, the proportional share of births paid for by the Arizona Health Care Cost Containment System (AHCCCS, the State's Medicaid program) increased from 81.6 percent in 2005 to 82.9 percent in 2015 (**Figure 13**).

Figure 14
Trends in the Incidence of Sexually Transmitted Infections* among Females 15-19 Years, Arizona, 2005-2015



In each year from 2007 to 2012, the total number of sexually transmitted infections (STI) among females aged 19 or younger exceeded 7,300, but fell to 6,723 in 2014, then increased to 6,872 in 2015 (**Table 15**). Even with the recent decline, the rate of STI among females 15-19 years old increased 0.5 percent from 2,972.1 cases per 100,000 in 2005 to a rate of 2,985.5 per 100,000 in 2015.

These STIs include *chlamydia* and *syphilis*. *Chlamydia* can cause sterility in the affected mother and eye infections and pneumonia in the newborn. *Syphilis* can cause blindness and maternal and/or infant death.

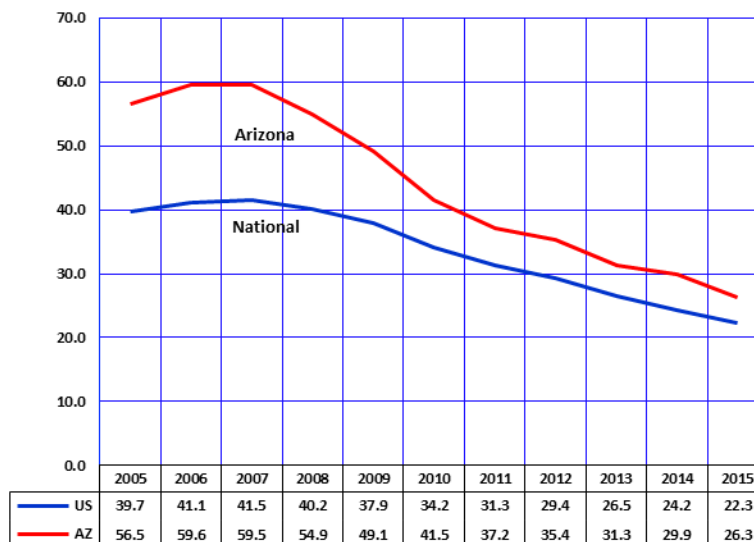
Notes: * The sum of annually reported cases of gonorrhea, chlamydia, and early syphilis.
 Source: Bureau of Epidemiology and Disease Control Services, Office of Infectious Disease Services.

KEY FINDINGS

Figure 15
Birth Rates for Teenagers 15-19 Years, Nationally and in Arizona, 2005-2015

In each year from 2005 to 2015, birth rates for Arizona teenagers 15-19 years old exceeded the rates of their national peers (**Figure 15, Table 11**).

In Arizona, Hispanic or Latino females 15-19 years old, a high-fertility group, accounted for 38.0 percent of females aged 15-19 years in 2015. A high proportional representation of Hispanic or Latino females in Arizona puts upward pressure on the overall teen birth rate.

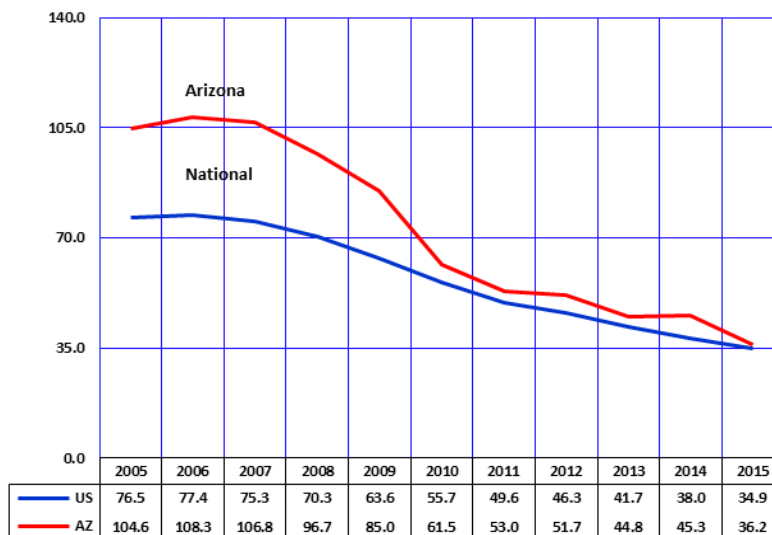


Note: The number of births per 1,000 females 15-19 years old.

Figure 16
Birth Rates for Hispanic or Latino Teenagers 15-19 Years, Nationally, and in Arizona, 2005-2015

In 2015, Hispanics or Latino teens aged 15-19 years disproportionately accounted for 57.5 percent of births to mothers in this age group in Arizona (3,381 out of 5,884; see **Table 6** and **Table 7**).

Historically the birth rates among Hispanic or Latino teenagers have been higher in Arizona than nationally. In 2015, the national birth rate for Hispanic teenagers decreased 8.2 percent from 2014, making Arizona's rate 3.7 percent higher than the national rate in 2015.



Note: The number of births per 1,000 females 15-19 years old.

TEENAGE PREGNANCY, ARIZONA, 2005-2015

DATA TABLES

**TABLE 1
PREGNANCIES AND PREGNANCY OUTCOME BY AGE GROUP AND YEAR,
FEMALES 19 OR YOUNGER, ARIZONA, 2005-2015**

Pregnancy outcome by year	Total, females 19 years or younger	10-14 years	15-19 years old		
			Total, 15-19 years	15-17 years	18-19 years
ALL PREGNANCIES					
2005	13,898	239	13,659	4,790	8,869
2006	14,918	242	14,676	5,105	9,571
2007	15,038	325	14,713	4,975	9,738
2008	14,047	230	13,817	4,740	9,077
2009	12,537	156	12,381	3,945	8,436
2010	10,980	150	10,830	3,363	7,467
2011	10,269	150	10,119	2,939	7,180
2012	9,710	116	9,594	2,860	6,734
2013	8,715	91	8,624	2,385	6,239
2014	7,924	68	7,856	2,125	5,731
2015	7,121	66	7,055	1,887	5,168
LIVE BIRTHS					
2005	11,933	185	11,748	4,179	7,569
2006	12,916	170	12,746	4,450	8,296
2007	12,972	180	12,792	4,361	8,431
2008	12,161	161	12,000	4,151	7,849
2009	10,952	132	10,820	3,501	7,319
2010	9,416	105	9,311	2,910	6,401
2011	8,435	101	8,334	2,447	5,887
2012	8,117	67	8,050	2,430	5,620
2013	7,222	71	7,151	1,985	5,166
2014	6,623	46	6,577	1,770	4,807
2015	5,884	41	5,843	1,582	4,261
ABORTIONS					
2005	1,892	54	1,838	582	1,256
2006	1,919	69	1,850	624	1,226
2007	1,979	142	1,837	576	1,261
2008	1,813	67	1,746	567	1,179
2009	1,519	24	1,495	418	1,077
2010	1,512	44	1,468	435	1,033
2011	1,785	49	1,736	478	1,258
2012	1,539	48	1,491	414	1,077
2013	1,441	20	1,421	382	1,039
2014	1,249	22	1,227	330	897
2015	1,189	25	1,164	287	877
FETAL LOSSES					
2005	73	0	73	29	44
2006	80†	*	80	31	49
2007	90†	*	84	38	46
2008	70†	*	71	22	49
2009	66	0	66	26	40
2010	50†	*	51	18	33
2011	49	0	49	14	35
2012	50†	*	53	16	37
2013	52	0	52	18	34
2014	52	0	52	25	27
2015	48	0	48	18	30

Notes: * Cell suppressed due to non-zero count less than 6; † Sum rounded to nearest tens unit due to non-zero addend less than 6.

**TABLE 2
PREGNANCY RATES^a BY PREGNANCY OUTCOME, AGE GROUP, AND YEAR,
FEMALES 19 OR YOUNGER, ARIZONA, 2005-2015**

Pregnancy outcome by year	Total, females 19 years or younger	10-14 years	15-19 years old		
			Total, 15-19 years	15-17 years	18-19 years
ALL PREGNANCIES					
2005	32.7	1.1	65.6	39.1	103.6
2006	34.1	1.1	68.7	39.0	115.6
2007	34.4	1.5	68.4	36.9	121.4
2008	31.6	1.0	63.2	34.6	111.3
2009	28.0	0.7	56.1	28.5	102.5
2010	24.7	0.7	48.3	25.5	80.8
2011	23.0	0.7	44.8	22.1	77.2
2012	21.6	0.5	42.2	21.8	70.2
2013	19.2	0.4	37.7	18.0	64.8
2014	17.8	0.3	35.7	16.1	65.2
2015	15.9	0.3	31.8	14.1	58.4
LIVE BIRTHS					
2005	28.1	0.9	56.5	34.1	88.4
2006	29.6	0.8	59.6	34.0	100.2
2007	29.7	0.8	59.5	32.3	105.1
2008	27.4	0.7	54.9	30.3	96.3
2009	24.4	0.6	49.1	25.3	89.0
2010	21.2	0.5	41.5	22.1	69.2
2011	19.0	0.5	37.2	18.6	63.7
2012	18.0	0.3	35.4	18.5	58.6
2013	15.9	0.3	31.3	15.0	53.6
2014	14.9	0.2	29.9	13.4	54.7
2015	13.1	0.2	26.3	11.8	48.2
ABORTIONS					
2005	4.5	0.2	8.8	4.8	14.7
2006	4.4	0.3	8.7	4.8	14.8
2007	4.5	0.6	8.5	4.3	15.7
2008	4.1	0.3	8.0	4.1	14.5
2009	3.4	0.1	6.8	3.0	13.1
2010	3.4	0.2	6.5	3.3	11.2
2011	4.0	0.2	7.7	3.6	13.5
2012	3.4	0.2	6.6	3.1	11.2
2013	3.2	0.1	6.2	2.9	10.8
2014	2.8	0.1	5.6	2.5	10.2
2015	2.7	0.1	5.2	2.1	9.9
FETAL LOSSES					
2005	0.2	0.0	0.4	0.2	0.5
2006	0.2	**	0.4	0.2	0.6
2007	0.2	**	0.4	0.3	0.6
2008	0.2	**	0.3	0.2	0.6
2009	0.2	0.0	0.3	0.2	0.5
2010	0.1	**	0.2	0.1	0.4
2011	0.1	0.0	0.2	0.1	0.4
2012	0.1	**	0.2	0.1	0.4
2013	0.1	0.0	0.2	0.1	0.4
2014	0.1	0.0	0.2	0.2	0.3
2015	0.1	0.0	0.2	0.1	0.3

Notes: ** Cell suppressed due to rate/ratio/percent based on non-zero count less than 6; ^a The number of pregnancies (live births + abortions + fetal deaths) per 1,000 females in specified age group; 0.0: Quantity more than zero but less than 0.05.

**TABLE 3
LIVE BIRTHS TO FEMALES 19 OR YOUNGER BY AGE GROUP, RACE/ETHNICITY,
AND YEAR, ARIZONA, 2005-2015**

Racial/ethnic group and year	Total, females 19 years or younger	10-14 years	15-19 years old		
			Total, 15-19 years	15-17 years	18-19 years
WHITE NON-HISPANIC					
2005	2,744	17	2,727	711	2,016
2006	3,209	19	3,190	852	2,338
2007	3,100	26	3,074	779	2,295
2008	2,993	15	2,978	769	2,209
2009	2,715	20	2,695	649	2,046
2010	2,386	12	2,374	541	1,833
2011	2,089	13	2,076	494	1,582
2012	1,977	8	1,969	475	1,494
2013	1,781	8	1,773	365	1,408
2014	1,757	8	1,749	344	1,405
2015	1,530 [†]	*	1,526	339	1,187
HISPANIC OR LATINO					
2005	7,188	137	7,051	2,721	4,330
2006	7,738	123	7,615	2,923	4,692
2007	7,782	115	7,667	2,892	4,775
2008	7,168	111	7,057	2,724	4,333
2009	6,341	87	6,254	2,253	4,001
2010	5,348	68	5,280	1,859	3,421
2011	4,631	61	4,570	1,467	3,103
2012	4,627	46	4,581	1,528	3,053
2013	4,080	47	4,033	1,244	2,789
2014	3,813	23	3,790	1,115	2,675
2015	3,409	28	3,381	972	2,409
BLACK OR AFRICAN AMERICAN					
2005	569	8	561	199	362
2006	601	7	594	187	407
2007	621	12	609	195	414
2008	656	12	644	203	441
2009	603	6	597	181	416
2010	562	10	552	151	401
2011	561	10	551	152	399
2012	540 [†]	*	539	159	380
2013	507	6	501	122	379
2014	390 [†]	*	389	102	287
2015	310 [†]	*	311	77	234
AMERICAN INDIAN OR ALASKA NATIVE					
2005	1,204	21	1,183	478	705
2006	1,216	19	1,197	430	767
2007	1,285	26	1,259	445	814
2008	1,185	22	1,163	408	755
2009	1,170	17	1,153	394	759
2010	988	14	974	331	643
2011	987	14	973	293	680
2012	890	7	883	251	632
2013	775	8	767	243	524
2014	602	9	593	196	397
2015	569	7	562	177	385
ASIAN OR PACIFIC ISLANDER					
2005	100 [†]	*	95	28	67
2006	90 [†]	*	91	28	63
2007	103	0	103	31	72
2008	110 [†]	*	112	26	86
2009	90 [†]	*	86	18	68
2010	100 [†]	*	102	23	79
2011	110 [†]	*	109	26	83
2012	80 [†]	*	78	17	61
2013	80 [†]	*	77	11	66
2014	60 [†]	*	56	13	43
2015	63	0	63	17	46

Notes: * Cell suppressed due to non-zero count less than 6; [†] Sum rounded to nearest tens unit due to non-zero addend less than 6.

**TABLE 4
ABORTIONS TO FEMALES 19 OR YOUNGER BY AGE GROUP, RACE/ETHNICITY,
AND YEAR, ARIZONA, 2005-2015**

Racial/ethnic group and year	Total, females 19 years or younger	10-14 years	15-19 years old		
			Total, 15-19 years	15-17 years	18-19 years
WHITE NON-HISPANIC					
2005	867	15	852	278	574
2006	917	28	889	296	593
2007	982	71	911	282	629
2008	841	21	820	266	554
2009	720	11	709	207	502
2010	694	16	678	198	480
2011	289	10	279	80	199
2012	238	6	232	65	167
2013	257	6	251	66	185
2014	488	7	481	133	348
2015	488	6	482	111	371
HISPANIC OR LATINO					
2005	522	21	501	151	350
2006	609	24	585	193	392
2007	710	44	666	210	456
2008	561	34	527	173	354
2009	525	8	517	136	381
2010	532	16	516	151	365
2011	638	17	621	179	442
2012	441	12	429	138	291
2013	509	6	503	136	367
2014	531	7	524	134	390
2015	467	13	454	118	336
BLACK OR AFRICAN AMERICAN					
2005	110†	*	109	32	77
2006	124	9	115	48	67
2007	136	13	123	42	81
2008	140†	*	138	43	95
2009	110†	*	107	28	79
2010	70†	*	66	24	42
2011	17	0	20†	*	13
2012	10†	*	10†	6	*
2013	20†	*	22	8	14
2014	90†	*	88	34	54
2015	90†	*	83	25	58
AMERICAN INDIAN OR ALASKA NATIVE					
2005	80†	*	72	21	51
2006	60†	*	54	24	30
2007	63	8	55	22	33
2008	50†	*	52	17	35
2009	52	0	52	22	30
2010	40†	*	34	13	21
2011	10†	0	10†	*	*
2012	0†	0	0†	*	*
2013	8	0	10†	*	*
2014	30†	*	20†	*	18
2015	50†	*	47	13	34
ASIAN OR PACIFIC ISLANDER					
2005	35	0	35	10	25
2006	40†	*	37	11	26
2007	60†	*	59	8	51
2008	40†	*	34	12	22
2009	40†	*	39	8	31
2010	14	0	10†	*	9
2011	10†	*	0†	0	*
2012	9	0	10†	*	7
2013	0†	0	0†	*	*
2014	40†	*	34	10	24
2015	28	0	30†	*	25

Notes: * Cell suppressed due to non-zero count less than 6; † Sum rounded to nearest tens unit due to non-zero addend less than 6.

**TABLE 5
NUMBER OF PREGNANCIES^a BY PREGNANCY OUTCOME, RACE/ETHNICITY, AND YEAR AMONG FEMALES AGED 17 AND YOUNGER
WITH RATES^b, ARIZONA, 2005-2015**

Race/ethnicity Pregnancy outcome	2005	2006	2007	2008	2009	2010	2011	2012	2013	2014	2015	2015 Rates
WHITE^c NON-HISPANIC, total:	1,028	1,204	1,165	1,074	894	770	600	564	448	496	462	3.0
Births	728	871	805	784	669	553	507	483	373	352	344	2.2
Abortions	293	324	353	287	218	214	90	71	72	140	117	0.8
HISPANIC OR LATINO, total:	3,043	3,281	3,286	3,057	2,496	2,106	1,731	1,728	1,443	1,292	1,144	7.4
Births	2,858	3,046	3,007	2,835	2,340	1,927	1,528	1,574	1,291	1,138	1,000	6.5
Abortions	172	217	254	207	144	167	196	150	142	141	131	0.8
BLACK OR AFRICAN AMERICAN, total:	247	255	268	266	221	189	170 [†]	174	140	145	106	5.5
Births	207	194	207	215	187	161	162	164	128	107	78	4.1
Abortions	37	57	55	48	31	25	*	9	9	36	27	1.4
AMERICAN INDIAN OR ALASKA NATIVE, total:	530	477	504	452	436	361	310 [†]	260 [†]	260 [†]	217	204	10.9
Births	499	449	471	430	411	345	307	258	251	205	184	9.8
Abortions	25	25	30	19	22	15	*	*	*	7	17	0.9
ASIAN OR PACIFIC ISLANDER, total:	39	43	43	41	30	30 [†]	30 [†]	20 [†]	20 [†]	25	20 [†]	1.7
Births	29	29	31	27	20	24	28	18	13	14	17	1.5
Abortions	10	14	12	14	9	*	*	*	*	11	*	**
ALL RACIAL/ETHNIC GROUPS^d, total:	5,029	5,347	5,300	4,970	4,101	3,513	3,089	2,976	2,476	2,193	1,953	5.4
Births	4,364	4,620	4,541	4,312	3,633	3,015	2,548	2,497	2,056	1,816	1,623	4.5
Abortions	636	693	718	634	442	479	527	463	402	352	312	0.9
Pregnancy rate, total:	14.8	15.1	14.8	13.7	11.2	10.0	8.7	8.4	6.9	6.1	5.4	
Fertility rate^e	12.9	13.0	12.7	11.9	9.9	8.6	7.2	7.1	5.8	5.1	4.5	
Abortion rate	1.9	2.0	2.0	1.7	1.2	1.4	1.5	1.3	1.1	1.0	0.9	

Notes: * Cell suppressed due to non-zero count less than 6; ** Cell suppressed due to rate/ratio/percent based on non-zero count less than 6; [†] Sum rounded to nearest tens unit due to non-zero addend less than 6; ^a Fetal deaths are included in the total counts of pregnancies; ^b All rates per 1,000 females 10-17 years old; ^c Not of Hispanic origin; ^d Includes other and unspecified ethnicity; ^e Number of births per 1,000 females 10-17 years old.

**TABLE 6
NUMBER OF PREGNANCIES^a BY PREGNANCY OUTCOME, RACE/ETHNICITY, AND YEAR AMONG FEMALES 15-17 YEARS OLD
WITH RATES^b, ARIZONA, 2005-2015**

Race/ethnicity Pregnancy outcome	2005	2006	2007	2008	2009	2010	2011	2012	2013	2014	2015	2015 Rates
WHITE^c NON-HISPANIC, total:	996	1,157	1,067	1,038	863	742	577	549	434	481	451	7.7
Births	711	852	779	769	649	541	494	475	365	344	339	5.8
Abortions	278	296	282	266	207	198	80	65	66	133	111	1.9
HISPANIC OR LATINO, total:	2,885	3,131	3,126	2,911	2,401	2,021	1,653	1,670	1,390	1,262	1,103	19.5
Births	2,721	2,923	2,892	2,724	2,253	1,859	1,467	1,528	1,244	1,115	972	17.2
Abortions	151	193	210	173	136	151	179	138	136	134	118	2.1
BLACK OR AFRICAN AMERICAN, total:	234	239	242	248	212	178	160 [†]	166	133	138	103	14.2
Births	199	187	195	203	181	151	152	159	122	102	77	10.6
Abortions	32	48	42	43	28	24	*	6	8	34	25	3.4
AMERICAN INDIAN OR ALASKA NATIVE, total:	505	457	470	428	419	345	300 [†]	250 [†]	250 [†]	210 [†]	193	27.3
Births	478	430	445	408	394	331	293	251	243	196	177	25.0
Abortions	21	24	22	17	22	13	*	*	*	*	13	1.8
ASIAN OR PACIFIC ISLANDER, total:	38	39	39	38	30 [†]	30 [†]	26	20 [†]	10 [†]	23	20 [†]	4.8
Births	28	28	31	26	18	23	26	17	11	13	17	4.1
Abortions	10	11	8	12	*	*	0	*	*	10	*	**
ALL RACIAL/ETHNIC GROUPS^d, total:	4,790	5,105	4,975	4,740	3,945	3,363	2,939	2,860	2,385	2,125	1,887	14.1
Births	4,179	4,450	4,361	4,151	3,501	2,910	2,447	2,430	1,985	1,770	1,582	11.8
Abortions	582	624	576	567	418	435	478	414	382	330	287	2.1
Pregnancy rate, total:	39.1	39.0	36.9	34.6	28.5	25.5	22.1	21.8	18.0	16.1	14.1	
Fertility rate^e	34.1	34.0	32.3	30.3	25.3	22.1	18.4	18.5	15.0	13.4	11.8	
Abortion rate	4.8	4.8	4.3	4.1	3.0	3.3	3.6	3.1	2.9	2.5	2.1	

Notes: * Cell suppressed due to non-zero count less than 6; ** Cell suppressed due to rate/ratio/percent based on non-zero count less than 6; [†] Sum rounded to nearest tens unit due to non-zero addend less than 6; ^a Fetal deaths are included in the total counts of pregnancies; ^b All rates per 1,000 females 15-17 years old; ^c Not of Hispanic origin; ^d Includes other and unspecified ethnicity; ^e Number of births per 1,000 females 15-17 years old.

**TABLE 7
NUMBER OF PREGNANCIES^a BY PREGNANCY OUTCOME, RACE/ETHNICITY, AND YEAR AMONG FEMALES 18-19 YEARS OLD
WITH RATES^b, ARIZONA, 2005-2015**

Race/ethnicity Pregnancy outcome	2005	2006	2007	2008	2009	2010	2011	2012	2013	2014	2015	2015 Rates
WHITE^c NON-HISPANIC, total:	2,603	2,944	2,936	2,778	2,560	2,316	1,792	1,675	1,602	1,759	1,562	40.2
Births	2,016	2,338	2,295	2,209	2,046	1,833	1,582	1,494	1,408	1,405	1,187	30.5
Abortions	574	593	629	554	502	480	199	167	185	348	371	9.5
HISPANIC OR LATINO, total:	4,705	5,115	5,259	4,707	4,400	3,812	3,566	3,357	3,175	3,078	2,764	74.7
Births	4,330	4,692	4,775	4,333	4,001	3,421	3,103	3,053	2,789	2,675	2,409	65.1
Abortions	350	392	456	354	381	365	442	291	367	390	336	9.1
BLACK OR AFRICAN AMERICAN, total:	441	476	498	546	501	446	413	390†	397	345	294	59.8
Births	362	407	414	441	416	401	399	380	379	287	234	47.6
Abortions	77	67	81	95	79	42	13	*	14	54	58	11.8
AMERICAN INDIAN OR ALASKA NATIVE, total:	759	800	849	794	793	664	690†	640†	530†	417	423	90.8
Births	705	767	814	755	759	643	680	632	524	397	385	82.7
Abortions	51	30	33	35	30	21	*	*	*	18	34	7.3
ASIAN OR PACIFIC ISLANDER, total:	93	89	124	108	99	88	90†	68	70†	67	72	23.8
Births	67	63	72	86	68	79	83	61	66	43	46	15.2
Abortions	25	26	51	22	31	9	*	7	*	24	25	8.3
ALL RACIAL/ETHNIC GROUPS^d, total:	8,869	9,571	9,738	9,077	8,436	7,467	7,180	6,734	6,239	5,731	5,168	58.4
Births	7,569	8,296	8,431	7,849	7,319	6,401	5,887	5,620	5,166	4,807	4,261	48.2
Abortions	1,256	1,226	1,261	1,179	1,077	1,033	1,258	1,077	1,039	897	877	9.9
Pregnancy rate, total:	103.6	115.6	121.4	111.3	102.5	80.8	77.2	70.2	64.8	65.2	58.4	
Fertility rate^e	88.4	100.2	105.1	96.3	89.0	69.2	63.3	58.6	53.6	54.7	48.2	
Abortion rate	14.7	14.8	15.7	14.5	13.1	11.2	13.5	11.2	10.8	10.2	9.9	

Notes: * Cell suppressed due to non-zero count less than 6; † Sum rounded to nearest tens unit due to non-zero addend less than 6; ^a Fetal deaths are included in the total counts of pregnancies; ^b All rates per 1,000 females 18-19 years old; ^c Not of Hispanic origin; ^d Includes other and unspecified ethnicity; ^e Number of births per 1,000 females 18-19 years old.

**TABLE 8
NUMBER OF PREGNANCIES^a BY PREGNANCY OUTCOME, RACE/ETHNICITY, AND YEAR AMONG FEMALES 19 AND YOUNGER,
WITH RATES^b, ARIZONA, 2005-2015**

Race/ethnicity Pregnancy outcome	2005	2006	2007	2008	2009	2010	2011	2012	2013	2014	2015	2015 Rates
WHITE^c NON-HISPANIC, total:	3,631	4,148	4,101	3,852	3,454	3,086	2,392	2,239	2,050	2,255	2,024	10.5
Births	2,744	3,209	3,100	2,993	2,715	2,386	2,089	1,977	1,781	1,757	1,531	7.9
Abortions	867	917	982	841	720	694	289	238	257	488	488	2.5
HISPANIC OR LATINO, total:	7,748	8,396	8,545	7,764	6,896	5,918	5,297	5,085	4,618	4,370	3,908	20.4
Births	7,188	7,738	7,782	7,168	6,341	5,348	4,631	4,627	4,080	3,813	3,409	17.8
Abortions	522	609	710	561	525	532	638	441	509	531	467	2.4
BLACK OR AFRICAN AMERICAN, total:	688	731	766	812	722	635	580	562	537	490	400	16.6
Births	569	601	621	656	603	562	561	544	507	394	312	12.9
Abortions	114	124	136	143	110	67	17	14	23	90	85	3.5
AMERICAN INDIAN OR ALASKA NATIVE, total:	1,289	1,277	1,353	1,246	1,229	1,025	1,000 [†]	900 [†]	787	634	627	26.8
Births	1,204	1,216	1,285	1,185	1,170	988	987	890	775	602	569	24.3
Abortions	76	55	63	54	52	36	*	*	8	25	51	2.2
ASIAN OR PACIFIC ISLANDER, total:	132	132	167	149	129	117	120 [†]	88	80 [†]	92	92	6.3
Births	96	92	103	113	88	103	111	79	79	57	63	4.3
Abortions	35	40	63	36	40	14	*	9	*	35	28	1.9
ALL RACIAL/ETHNIC GROUPS^d, total:	13,898	14,918	15,038	14,047	12,537	10,980	10,269	9,710	8,715	7,924	7,121	15.9
Births	11,933	12,916	12,972	12,161	10,952	9,416	8,435	8,117	7,222	6,623	5,884	13.1
Abortions	1,892	1,919	1,979	1,813	1,519	1,512	1,785	1,539	1,441	1,249	1,189	2.7
Pregnancy rate, total:	32.7	34.1	34.4	31.6	28.0	24.7	23.0	21.6	19.2	17.8	15.9	
Fertility rate^e	28.1	29.6	29.7	27.4	24.4	21.2	18.9	18.0	15.9	14.9	13.1	
Abortion rate	4.5	4.4	4.5	4.1	3.4	3.4	4.0	3.4	3.2	2.8	2.7	

Notes: * Cell suppressed due to non-zero count less than 6; [†] Sum rounded to nearest tens unit due to non-zero addend less than 6; [§] Fetal deaths are included in the total counts of pregnancies; ^b All rates per 1,000 females 19 or younger; ^c Not of Hispanic origin; ^d Includes other and unspecified ethnicity; ^e Number of births per 1,000 females 19 or younger.

**TABLE 9
TRENDS IN PREGNANCY RATES^a BY COUNTY OF RESIDENCE AMONG FEMALES 10-17 AND 18-19 YEARS OLD,
ARIZONA, 2005-2015**

	ARIZONA	APACHE	COCHISE	COCONINO	GILA	GRAHAM	GREENLEE	LA PAZ	MARICOPA	MOHAVE	NAVAJO	PIMA	PINAL	SANTA CRUZ	YAVAPAI	YUMA		
19 Years or Younger	2005	32.7	25.9	30.0	27.7	38.8	20.9	31.0	49.8	33.9	32.1	33.1	30.6	33.5	30.7	25.7	37.0	
	2006	34.1	25.6	24.2	31.0	37.7	35.5	24.7	30.0	35.4	33.0	30.0	32.9	34.1	32.9	29.6	38.0	
	2007	34.4	27.5	29.1	33.2	41.7	40.1	25.4	50.9	35.4	31.9	33.7	30.5	37.4	32.2	33.0	37.8	
	2008	31.6	25.3	27.2	28.6	45.9	33.2	33.2	38.6	32.5	28.1	36.3	29.0	31.3	31.5	26.9	35.1	
	2009	28.0	27.7	28.7	27.6	40.8	33.7	41.2	27.8	27.4	25.9	33.2	27.0	27.6	29.1	25.0	36.1	
	2010	24.7	26.7	27.5	22.5	39.7	33.3	35.7	38.1	23.7	24.6	32.8	24.7	22.8	30.5	21.4	34.1	
	2011	23.0	23.6	24.7	20.3	35.9	28.5	34.1	31.9	22.4	18.9	33.4	22.6	21.7	27.9	19.9	30.1	
	2012	21.6	21.6	24.0	18.0	29.9	29.2	18.9	25.3	20.7	19.2	29.8	21.4	20.6	29.0	18.7	29.0	
	2013	19.2	19.1	18.9	16.2	32.0	26.7	28.8	37.6	18.4	15.8	23.3	19.2	16.4	20.6	16.7	25.1	
	2014	17.8	17.7	18.4	14.7	29.0	27.1	26.8	33.4	17.4	17.5	21.8	16.9	15.5	20.0	17.2	19.7	
	2015	15.9	13.7	20.0	14.4	25.6	23.7	20.5	22.9	15.3	14.7	21.4	15.0	15.1	13.6	16.4	18.2	
	18-19 Years	2005	103.6	105.4	110.0	79.5	150.5	56.7	174.8	148.7	106.5	134.0	138.2	83.7	119.8	111.8	104.1	122.2
		2006	115.6	87.9	71.1	84.0	139.8	95.6	69.0	63.0	125.0	142.1	99.4	95.8	129.3	108.5	109.2	122.8
		2007	121.4	89.4	99.8	81.2	164.0	103.4	122.4	242.8	131.9	157.6	125.8	89.6	144.9	102.8	129.9	129.8
		2008	111.3	89.5	92.4	72.2	165.9	94.7	133.3	156.1	120.0	135.7	135.7	86.5	121.8	111.6	100.1	121.7
2009		102.5	100.2	102.7	68.9	160.2	93.2	203.9	127.2	106.0	129.2	132.3	82.3	108.4	115.7	101.3	119.9	
2010		80.8	96.6	90.6	40.2	137.9	96.0	122.4	177.8	80.3	96.5	122.7	68.7	96.8	94.2	84.5	114.7	
2011		77.2	94.2	78.9	36.2	132.6	81.7	163.3	127.8	78.4	75.9	121.1	64.3	94.7	104.2	71.3	109.3	
2012		70.2	79.6	80.2	33.4	105.8	95.2	64.7	87.7	69.3	69.6	115.7	61.9	82.2	97.9	64.6	90.1	
2013		64.8	68.5	65.2	30.8	133.0	103.2	108.8	146.1	64.2	59.4	92.9	54.6	67.7	92.4	62.2	83.0	
2014		65.2	66.4	66.7	25.8	114.8	108.7	142.9	126.4	68.3	79.5	81.0	48.7	70.8	66.9	75.5	72.0	
2015		58.4	43.9	77.0	25.9	105.7	95.0	86.2	77.3	59.5	67.9	78.9	45.9	71.4	50.9	64.5	69.9	
10-17 Years		2005	14.8	11.9	11.7	12.1	18.2	9.0	**	30.7	15.7	11.5	14.4	14.0	14.9	15.2	8.6	17.1
		2006	15.1	10.8	12.0	14.1	16.6	17.6	**	13.1	15.7	12.4	14.9	14.7	13.4	16.5	11.8	16.6
		2007	14.8	12.5	12.0	16.3	16.2	19.3	**	15.8	15.3	10.7	14.4	13.6	16.4	17.7	12.8	16.0
		2008	13.7	9.7	11.3	13.2	21.0	12.9	16.2	17.0	14.3	9.5	15.5	12.5	13.6	15.0	10.9	14.6
	2009	11.2	10.1	10.8	13.0	15.9	14.2	13.3	9.5	11.0	8.1	12.5	11.2	11.8	11.4	8.4	16.1	
	2010	10.0	11.0	10.8	11.5	18.1	11.9	19.3	**	9.5	8.1	12.5	10.3	8.6	17.1	6.6	14.9	
	2011	8.7	7.8	10.4	10.6	14.6	10.3	**	10.1	8.4	5.8	13.6	9.0	7.7	11.9	7.8	11.2	
	2012	8.4	7.7	9.2	8.3	11.7	12.2	**	8.9	8.1	6.3	10.4	8.0	7.2	15.0	7.4	12.6	
	2013	6.9	8.1	6.9	7.3	10.7	10.0	10.8	12.8	6.6	4.4	7.1	7.4	5.3	7.7	5.4	10.1	
	2014	6.1	6.0	6.4	7.1	9.9	9.5	**	11.6	5.9	4.8	8.8	6.6	5.1	9.1	4.3	6.7	
	2015	5.4	6.8	6.3	6.2	9.5	8.1	**	10.3	5.2	3.9	9.7	5.2	4.7	5.2	5.3	5.7	

Notes: ** Cell suppressed due to rate/ratio/percent based on count less than 6; ^a Number of pregnancies per 1,000 females in specified group.

**TABLE 10
LIVE BIRTHS TO FEMALES 19 OR YOUNGER AS A PERCENTAGE OF TOTAL LIVE BIRTHS BY AREA, RACE/ETHNICITY,
AND YEAR, ARIZONA, 2005-2015**

Group	2005	2006	2007	2008	2009	2010	2011	2012	2013	2014	2015
ARIZONA, TOTAL^a											
# Births (all ages)	95,798	102,042	102,687	99,215	92,616	87,053	85,190	85,725	84,963	86,648	85,024
# Births to teenagers	11,933	12,916	12,972	12,161	10,952	9,416	8,535	8,117	7,222	6,623	5,884
% Births to teenagers	12.5	12.7	12.6	12.2	11.8	10.8	10.0	9.5	8.5	7.6	6.9
URBAN COUNTIES^b											
# Births (all ages)	82,141	87,910	88,266	85,263	79,046	74,624	74,040	74,128	73,493	74,677	73,547
# Births to teenagers	9,827	10,809	10,693	10,013	8,867	7,690	6,886	6,697	6,011	5,447	4,856
% Births to teenagers	12.0	12.3	12.1	11.7	11.2	10.3	9.3	9.0	8.2	7.3	6.6
RURAL COUNTIES											
# Births (all ages)	13,603	14,083	14,413	13,952	13,570	12,429	12,150	11,597	11,470	11,955	11,467
# Births to teenagers	2,103	2,100	2,279	2,148	2,085	1,726	1,549	1,420	1,211	1,175	1,028
% Births to teenagers	15.5	14.9	15.8	15.3	15.4	13.9	12.7	12.2	10.6	9.8	9.0
WHITE NON-HISPANIC											
# Births (all ages)	39,657	43,013	42,216	41,925	39,781	38,777	38,294	38,670	38,220	40,097	38,180
# Births to teenagers	2,744	3,209	3,100	2,993	2,715	2,386	2,089	1,977	1,781	1,757	1,531
% Births to teenagers	6.9	7.5	7.3	7.1	6.8	6.2	5.5	5.1	4.7	4.4	4.0
HISPANIC OR LATINO											
# Births (all ages)	42,156	44,862	45,731	42,639	38,362	34,333	32,398	33,146	33,075	33,715	34,264
# Births to teenagers	7,188	7,738	7,782	7,168	6,341	5,348	4,631	4,627	4,080	3,813	3,409
% Births to teenagers	17.0	17.2	17.0	16.8	16.5	15.6	14.3	14.0	12.3	11.3	9.9
BLACK OR AFRICAN AMERICAN											
# Births (all ages)	3,450	3,864	4,165	4,301	4,378	4,328	4,366	4,715	4,726	4,522	4,361
# Births to teenagers	569	601	621	656	603	562	561	544	507	394	312
% Births to teenagers	16.5	15.6	14.9	15.2	13.8	13.0	12.8	11.5	8.7	8.7	7.2
AMERICAN INDIAN OR ALASKA NATIVE											
# Births (all ages)	6,293	6,364	6,408	6,362	6,170	5,815	5,830	5,569	5,476	5,145	4,984
# Births to teenagers	1,204	1,216	1,285	1,185	1,170	988	987	890	775	602	569
% Births to teenagers	19.1	19.1	20.0	18.6	19.0	17.0	16.9	16.0	14.2	11.7	11.4
ASIAN OR PACIFIC ISLANDER											
# Births (all ages)	2,805	3,136	3,412	3,425	3,396	3,293	3,505	3,625	3,466	3,169	3,235
# Births to teenagers	96	92	103	113	88	103	111	79	79	57	63
% Births to teenagers	3.4	2.9	3.0	3.2	2.6	3.1	3.2	2.2	2.3	1.8	1.9

Notes: ^a Includes records for ethnic groups other than White Non-Hispanic, Hispanic or Latino, Black or African American, American Indian or Alaska Native, or Asian or Pacific Islander;
^b Urban = Maricopa, Pima, Pinal, and Yuma. The remaining counties comprise Arizona's rural areas.

**TABLE 11
BIRTH RATES BY AGE GROUP FOR FEMALES 19 OR YOUNGER,
ARIZONA, AND UNITED STATES, 2005-2015**

Year	10-14 years		15 - 19 years old					
			Total		15-17 years		18-19 years	
	AZ	U.S.	AZ	U.S.	AZ	U.S.	AZ	U.S.
2005	0.9	0.6	56.5	39.7	34.1	21.1	88.4	68.4
2006	0.8	0.6	59.6	41.1	34.0	21.6	100.2	71.2
2007	0.8	0.6	59.5	41.5	32.3	21.7	105.1	71.7
2008	0.7	0.6	54.9	40.2	30.3	21.1	96.3	68.2
2009	0.6	0.5	49.1	37.9	25.3	19.6	89.0	64.0
2010	0.5	0.4	41.5	34.2	22.1	17.3	69.2	58.2
2011	0.5	0.4	37.2	31.3	18.6	15.4	63.7	54.1
2012	0.3	0.4	35.4	29.4	18.5	14.1	58.6	51.4
2013	0.3	0.3	31.3	26.5	15.0	12.3	53.6	47.1
2014	0.2	0.3	29.9	24.2	13.4	10.9	54.7	43.8
2015	0.2	0.2	26.3	22.3	11.8	9.9	48.2	40.7

Note: The U.S. data is from the National Vital Statistics reports published by the National Center for Health Statistics.

**TABLE 12
REPEAT PREGNANCIES AMONG TEENAGE MOTHERS GIVING BIRTH BY AGE AND YEAR, ARIZONA, 2005-2015**

Mother's age	Pregnancies	Year										
		2005	2006	2007	2008	2009	2010	2011	2012	2013	2014	2015
15	Total	603	593	604	570	446	339	249	293	220 [†]	184	193
	Previous pregnancies	559	558	553	553	428	317	239	283	217	173	193
	One or more	44	35	51	17	18	22	10	8	*	10	0
16	Unknown	0	0	0	0	0	0	0	*	*	*	0
	Total	1,317	1,448	1,360	1,250	1,107	937	792	774	609	531	472
	Previous pregnancies	1,167	1,290	1,199	1,146	988	848	743	732	571	511	441
17	One or more	150	158	161	104	119	89	49	42	38	20	31
	Unknown	0	0	0	0	0	0	0	0	0	0	0
	Total	2,259	2,409	2,397	2,331	1,948	1,634	1,406	1,363	1,153	1,055	917
18	Previous pregnancies	1,791	1,905	1,895	1,983	1,598	1,343	1,197	1,218	1,022	938	835
	One or more	468	502	502	348	350	291	209	145	129	116	82
	Unknown	0	*	0	0	0	0	0	0	*	*	0
19	Total	3,351	3,523	3,661	3,376	3,078	2,647	2,399	2,281	2,012	1,886	1,620
	Previous pregnancies	2,411	2,519	2,645	2,576	2,226	1,967	1,901	1,845	1,658	1,545	1,365
	One or more	940	1,004	1,016	799	851	680	498	434	351	341	255
19	Unknown	0	0	0	*	*	0	0	*	*	0	0
	Total	4,218	4,773	4,770	4,473	4,241	3,754	3,488	3,339	3,154	2,921	2,641
	Previous pregnancies	2,631	2,961	2,980	3,065	2,667	2,459	2,414	2,444	2,376	2,233	2,017
19	One or more	1,586	1,812	1,790	1,407	1,570	1,295	1,074	892	777	687	622
	Unknown	*	0	0	*	*	0	0	*	*	*	*

Notes: * Cell suppressed due to non-zero count less than 6; † Sum rounded to nearest tens unit due to non-zero addend less than 6.

**TABLE 13
CUMULATIVE NUMBER OF MOTHERS WHO WERE 19 OR YOUNGER IN ARIZONA IN 2015**

Year Baby Was Born	MOTHER'S AGE WHEN BABY WAS BORN										Mother was 19 or younger in 2015	
	10	11	12	13	14	15	16	17	18	19		
2006	0											0
2007	0	0										0†
2008	0	*	*									0†
2009	0	0	*	15								20†
2010	0	*	*	11	92							110†
2011	0	0	*	7	93	249						350†
2012	0	0	*	*	61	293	774					1,130†
2013	0	0	*	15	55	223	609	1,153				2,060†
2014	0	0	0	6	40	184	531	1,055	1,886			3,702
2015	0	0	0	*	38	193	472	917	1,620	2,641		5,880†
Cumulative number of mothers 19 or younger	0	0†	10†	60†	379	1,142	2,386	3,125	3,506	2,641		13,250†

Notes: * Cell suppressed due to non-zero count less than 6; † Sum rounded to nearest tens unit due to non-zero addend less than 6; The above table focuses on the 2015 cohort of Arizona mothers who were 19 or younger that year. Among them are those who gave birth in 2015 and those who gave birth prior to 2015 and were still 19 or less years old in 2015. The numbers below the main diagonal (and below the stair-like line) represent the number of mothers meeting either one of the above criteria. The last column to the right gives the cumulative total for 2015 by the year the baby was born. For example, from among those girls and adolescents who had their baby in 2009, about 20 remained in their teens in 2015. The bottom row gives the cumulative total by mother's age when the baby was born. For example, among the 13,251 mothers under 20 in Arizona in 2015, around 10 had given birth when 13 years old. Excluded from the cumulative totals and not shown above the main diagonal (and above stair-like line) are the number of mothers who were 19 years old or younger when the baby was born, but who were no longer under the age 20 by 2015. For example, mothers who were 11 years old in 2006 were 20 years old in 2015. The figures in Table 13 are unadjusted for in-and-out migration, as well as mortality of mothers, in the period of 2006-2015. For simplicity, the number of mothers equals the number of babies (i.e., no adjustment was made for multiple birth events).

**TABLE 14
TRENDS IN TEEN PREGNANCY RATES BY RACE/ETHNICITY AND AGE GROUP,
ARIZONA, 2005-2015**

	Total, females 19 years or younger	10-14 years	15-19 years	15-17 years	18-19 years
WHITE NON-HISPANIC					
2005	15.8	0.3	31.6	14.9	55.1
2006	18.9	0.4	37.2	17.2	68.6
2007	19.0	0.9	36.3	15.6	70.3
2008	17.5	0.3	34.1	14.9	65.3
2009	15.6	0.3	30.3	12.3	59.6
2010	15.9	0.3	30.5	12.9	53.9
2011	11.8	0.2	22.8	9.6	40.8
2012	10.7	0.1	20.6	9.0	35.6
2013	9.8	0.1	18.9	7.1	34.0
2014	11.6	0.2	23.0	8.2	45.5
2015	10.5	**	20.6	7.7	40.2
HISPANIC OR LATINO					
2005	55.5	2.2	112.5	72.9	168.9
2006	56.0	1.9	117.3	72.7	188.1
2007	55.3	1.9	116.8	68.5	201.2
2008	49.4	1.7	104.4	62.7	177.2
2009	43.5	1.1	92.4	51.3	164.2
2010	33.8	0.9	67.9	38.9	112.6
2011	30.2	0.9	60.5	31.8	104.0
2012	28.0	0.6	56.7	31.6	93.8
2013	25.0	0.6	50.7	25.9	87.4
2014	25.4	0.3	51.9	25.2	91.7
2015	20.4	0.4	41.4	19.5	74.7
BLACK OR AFRICAN AMERICAN					
2005	43.5	1.6	89.0	51.6	144.8
2006	32.6	1.4	67.2	36.1	118.1
2007	36.1	2.3	73.9	36.9	144.1
2008	37.7	1.6	78.1	37.2	155.7
2009	33.3	0.8	69.5	31.6	141.7
2010	29.5	1.1	56.1	27.3	97.0
2011	24.9	0.9	47.7	22.3	84.0
2012	26.2	**	49.8	26.2	81.2
2013	25.1	0.7	47.5	20.9	82.9
2014	16.9	**	33.3	15.9	59.4
2015	16.6	**	32.6	14.2	59.8
AMERICAN INDIAN OR ALASKA NATIVE					
2005	40.8	1.5	85.8	55.0	137.0
2006	36.2	1.1	71.1	41.5	119.8
2007	39.1	2.0	73.8	42.4	124.9
2008	35.5	1.4	67.4	38.1	115.2
2009	34.7	1.0	66.2	36.9	114.0
2010	37.0	1.2	69.5	40.5	111.0
2011	29.2	0.8	55.7	28.8	94.2
2012	33.6	0.5	65.5	32.2	110.7
2013	29.7	0.6	58.6	31.5	98.0
2014	19.2	0.7	37.8	21.0	62.7
2015	26.8	0.9	52.5	27.3	90.8
ASIAN OR PACIFIC ISLANDER					
2005	16.2	**	30.4	16.2	47.6
2006	12.9	**	25.7	13.0	45.0
2007	15.3	0.0	31.1	12.0	62.2
2008	13.5	**	27.6	11.6	53.5
2009	11.6	**	23.6	8.2	48.7
2010	9.9	**	19.9	8.3	35.5
2011	9.1	**	18.0	7.2	32.7
2012	7.5	**	14.6	5.6	26.6
2013	6.8	**	13.2	3.7	25.5
2014	5.5	**	10.9	4.6	20.3
2015	6.3	0.0	12.8	4.8	23.8

Note: ** Cell suppressed due to rate/ratio/percent based on non-zero count less than 6.

**TABLE 15
TRENDS IN SEXUALLY TRANSMITTED INFECTIONS BY AGE GROUP AND YEAR AMONG FEMALES 10-19 YEARS,
ARIZONA, 2005-2015**

	2005	2006	2007	2008	2009	2010	2011	2012	2013	2014	2015
10-14 years											
Diagnosed with:											
Gonorrhea	40	40	32	19	26	22	27	21	21	16	30
Chlamydia	210	224	278	249	224	223	208	197	135	143	131
Early syphilis	0	0	*	*	0	0	0	0	0	0	0
Total reported infections	250	264	310 [†]	270 [†]	250	245	235	218	156	159	161
15-19 years											
Diagnosed with:											
Gonorrhea	721	804	709	468	453	529	691	813	702	679	751
Chlamydia	5,451	6,188	6,600	6,595	6,771	6,666	7,073	6,882	6,213	5,876	5,952
Early syphilis	13	16	25	8	6	10	8	6	6	9	8
Total reported infections	6,185	7,008	7,334	7,071	7,230	7,205	7,772	7,701	6,921	6,564	6,711

Notes: * Cell suppressed due to non-zero count less than 6; † Sum rounded to nearest tens unit due to non-zero addend less than 6; Information about the number of reported cases of gonorrhea, chlamydia, and early syphilis was provided by STD Program in the Office of Infectious Diseases (see Table 3B-3 in the Arizona Health Status and Vital Statistics annual reports).

**TABLE 16
TRENDS IN THE INCIDENCE RATES^a OF SEXUALLY TRANSMITTED INFECTIONS BY AGE GROUP AND YEAR AMONG
FEMALES 10-19 YEARS, ARIZONA, 2005-2015**

	2005	2006	2007	2008	2009	2010	2011	2012	2013	2014	2015
10-14 years											
Diagnosed with:											
Gonorrhea	18.5	17.9	14.4	8.4	11.4	10.0	12.3	9.4	9.4	7.1	13.3
Chlamydia	97.1	100.3	125.1	110.3	98.3	101.5	94.7	88.5	60.4	63.7	58.3
Early syphilis	0.0	0.0	**	**	0.0	0.0	0.0	0.0	0.0	0.0	0.0
Total reported infections	124.6	118.2	140.0	119.1	109.7	111.5	107.0	97.9	69.8	70.8	71.6
15-19 years											
Diagnosed with:											
Gonorrhea	346.5	376.2	329.6	214.1	205.4	253.8	308.1	374.7	321.0	306.9	334.1
Chlamydia	2,619.4	2,895.7	3,068.6	3,017.7	3,070.0	2,971.9	3,153.3	3,171.8	2,840.6	2,656.2	2,647.8
Early syphilis	6.2	7.5	11.6	3.7	2.7	4.5	3.6	2.8	2.7	4.1	3.6
Total reported infections	2,972.1	3,279.4	3,409.9	3,235.5	3,278.1	3,230.2	3,465.0	3,549.3	3,164.3	2,967.2	2,985.5

Notes: ** Cell suppressed due to rate/ratio/percent based on non-zero count less than 6; ^a Number of cases per 100,000 females in specified age group.

**TABLE 17
PREGNANCIES AND PREGNANCY RATES OF FEMALES 19 OR YOUNGER
BY COUNTY OF RESIDENCE, ARIZONA, 2015**

County of residence	NUMBER OF PREGNANCIES ^a				
	Total, females 19 years or younger	10-14 years	15-19 years old		
			Total, 15-19 years	15-17 years	18-19 years
Apache	80†	*	80	32	48
Cochise	150†	*	151	37	114
Coconino	160†	*	161	39	122
Gila	80†	*	74	22	52
Graham	70†	*	66	17	49
Greenlee	15	0	20†	*	10
La Paz	22	0	22	8	14
Maricopa	4,235	34	4,201	1,131	3,070
Mohave	156	0	156	34	122
Navajo	170†	*	167	60	107
Pima	960	12	948	240	708
Pinal	390†	*	389	100	289
Santa Cruz	55	0	55	17	38
Yavapai	180†	*	174	44	130
Yuma	280†	*	274	68	206
TOTAL STATE	7,121	70†	7,055	1,890†	5,168

County of residence	PREGNANCY RATES ^b				
	Total, females 19 years or younger	10-14 years	15-19 years old		
			Total 15-19 years	15-17 years	18-19 years
Apache	13.7	**	27.9	18.1	43.9
Cochise	20.0	**	40.2	16.2	77.0
Coconino	14.4	**	22.3	15.5	25.9
Gila	25.6	**	53.2	24.4	105.7
Graham	23.7	**	47.7	19.6	95.0
Greenlee	20.5	0.0	42.0	**	86.2
La Paz	22.9	0.0	45.7	26.7	77.3
Maricopa	15.3	0.2	31.1	13.5	59.5
Mohave	14.7	0.0	30.4	10.2	67.9
Navajo	21.4	**	43.0	23.7	78.9
Pima	15.0	0.4	28.2	13.2	45.9
Pinal	15.1	**	32.5	12.6	71.4
Santa Cruz	13.6	0.0	27.9	13.9	50.9
Yavapai	16.4	**	32.2	13.0	64.5
Yuma	18.2	**	36.6	15.0	69.9
TOTAL STATE	15.9	0.3	31.8	14.1	58.4

Notes: * Cell suppressed due to non-zero count less than 6; ** Cell suppressed due to rate/ratio/percent based on non-zero count less than 6; † Sum rounded to nearest tens unit due to non-zero addend less than 6; ^a The sum of live births, fetal deaths and abortions; ^b The number of pregnancies per 1,000 females in specified group.

TABLE 18
BIRTHS AND BIRTH RATES, FEMALES 19 OR YOUNGER BY COUNTY OF RESIDENCE,
ARIZONA, 2015

County of residence	NUMBER OF BIRTHS				
	Total, females 19 years or younger	10-14 years	15-19 years old		
			Total 15-19 years	15-17 years	18-19 years
Apache	80†	*	79	31	48
Cochise	140†	*	139	34	105
Coconino	130†	*	130	32	98
Gila	64	0	64	20	44
Graham	60†	*	61	15	46
Greenlee	14	0	10†	*	9
La Paz	21	0	21	7	14
Maricopa	3,476	21	3,455	952	2,503
Mohave	154	0	154	33	121
Navajo	170†	*	163	58	105
Pima	784	9	775	196	579
Pinal	330†	*	329	83	246
Santa Cruz	52	0	52	17	35
Yavapai	140†	*	143	33	110
Yuma	270†	*	264	66	198
TOTAL STATE	5,884	40†	5,843	1,580†	4,261

County of residence	BIRTH RATES ^a				
	Total, females 19 years or younger	10-14 years	15-19 years old		
			Total 15-19 years	15-17 years	18-19 years
Apache	13.5	**	27.6	17.5	43.9
Cochise	18.3	**	37.0	14.9	70.9
Coconino	11.6	**	18.0	12.7	20.8
Gila	21.9	0.0	46.0	22.2	89.4
Graham	21.9	**	44.1	17.3	89.1
Greenlee	19.1	0.0	39.2	**	77.6
La Paz	21.9	0.0	43.7	23.3	77.3
Maricopa	12.6	0.1	25.5	11.4	48.6
Mohave	14.5	0.0	30.0	9.9	67.3
Navajo	20.7	**	41.9	22.9	77.4
Pima	12.2	0.3	23.1	10.8	37.5
Pinal	12.7	**	27.5	10.5	60.8
Santa Cruz	12.9	0.0	26.4	13.9	46.9
Yavapai	13.4	**	26.5	9.7	54.6
Yuma	17.5	**	35.2	14.5	67.2
TOTAL STATE	13.1	0.2	26.3	11.8	48.2

Notes: * Cell suppressed due to non-zero count less than 6; ** Cell suppressed due to rate/ratio/percent based on non-zero count less than 6; † Sum rounded to nearest tens unit due to non-zero addend less than 6; ^a The number of births per 1,000 females in specified group.

**TABLE 19
PREGNANCY RATES^a AND NUMBER OF LIVE BIRTHS, FETAL DEATHS, AND
ABORTIONS TO TEENS BY INDIVIDUAL AGE, ARIZONA, 2015**

Age	Population	PREGNANCIES BY OUTCOME			TOTAL PREGNANCIES	
		Live births	Induced terminations of pregnancy (or abortions)	Spontaneous fetal losses	Number	Rate
10	44,397	0	0	0	0	0.0
11	44,897	0	0	0	0	0.0
12	44,460	0	*	0	*	**
13	45,537	*	8	0	11	0.2
14	46,012	38	15	0	53	1.2
10-14	225,303	40 [†]	30 [†]	0	70 [†]	0.3
15	44,807	193	50	*	247	5.5
16	44,389	472	85	*	560	12.6
17	44,489	917	152	11	1,080	24.3
15-17	133,685	1,582	287	20 [†]	1,887	14.1
18	44,477	1,620	352	7	1,979	44.5
19	44,000	2,641	525	23	3,189	72.5
18-19	88,477	4,261	877	30	5,168	58.4
Total 10-19	447,465	5,884	1,189	48	7,121	15.9

Notes: * Cell suppressed due to non-zero count less than 6; ** Cell suppressed due to rate/ratio/percent based on non-zero count less than 6; [†] Sum rounded to nearest tens unit due to non-zero addend less than 6; ^a Rates per 1,000 female population in specific group.

**TABLE 20
BIRTHS TO FEMALES 19 OR YOUNGER BY AGE AND COUNTY OF RESIDENCE,
ARIZONA, 2015**

	Total	Mother's age							
		12	13	14	15	16	17	18	19
TOTAL	5,880†	0	0†	40†	190†	470†	920†	1,620†	2,640†
Apache	80†	0	0	*	6	12	13	23	25
Cochise	140†	0	0	*	*	14	18	45	60
Coconino	130†	0	0	*	*	8	21	43	55
Gila	60†	0	0	0	*	8	9	12	32
Graham	60†	0	0	*	*	*	8	18	28
Geenlee	10†	0	0	0	*	*	*	6	*
La Paz	20†	0	0	0	0	*	*	*	10
Maricopa	3,480†	0	*	19	116	279	557	949	1,554
Mohave	150†	0	0	0	*	7	24	41	80
Navajo	170†	0	0	*	7	18	33	52	53
Pima	780†	0	*	8	25	63	108	206	373
Pinal	330†	0	0	*	11	28	44	96	150
Santa Cruz	50†	0	0	0	*	*	8	12	23
Yavapai	140†	0	0	*	0	7	26	43	67
Yuma	270†	0	0	*	11	14	41	70	128
Unknown	0	0	0	0	0	0	0	0	0

Note: * Cell suppressed due to non-zero count less than 6; † Sum rounded to nearest tens unit due to non-zero addend less than 6.

**TABLE 21
ABORTIONS TO FEMALES 19 OR YOUNGER BY AGE AND COUNTY OF RESIDENCE,
ARIZONA, 2015**

	Total	11	12	13	14	15	16	17	18	19
TOTAL	1,190†	0	0†	10†	20†	50†	90†	150†	350†	530†
Apache	0†	0	0	0	0	0	*	0	0	0
Cochise	10†	0	0	0	*	*	0	*	*	*
Coconino	30†	0	0	*	0	*	*	*	10	14
Gila	10†	0	0	0	*	0	*	*	*	*
Graham	10†	0	0	0	0	0	*	*	*	*
Greenlee	0†	0	0	0	0	0	0	0	0	*
La Paz	0†	0	0	0	0	0	0	*	0	0
Maricopa	730†	0	*	*	7	31	50	89	219	327
Mohave	0†	0	0	0	0	0	0	0	0	*
Navajo	10†	0	0	*	*	0	0	*	*	*
Pima	170†	0	0	*	*	7	12	23	49	77
Pinal	60†	0	0	0	*	*	*	7	17	24
Santa Cruz	0†	0	0	0	0	0	0	0	*	*
Yavapai	30†	0	0	0	*	*	*	6	7	13
Yuma	10†	0	0	0	0	0	0	0	*	*
Unknown	120†	0	0	*	*	*	9	19	40	49

Notes: * Cell suppressed due to non-zero count less than 6; † Sum rounded to nearest tens unit due to non-zero addend less than 6.

**TABLE 22
SOURCES OF PAYMENT FOR LABOR AND DELIVERY, FEMALES 19 OR YOUNGER
BY AGE AND COUNTY OF RESIDENCE, ARIZONA, 2015**

	Total	AHCCCS	IHS	Private insurance	Self-pay	Unknown
TOTAL	5,884	4,880	140†	650†	200†	20†
Apache	80†	55	21	*	*	0
Cochise	140	109	0	22	9	0
Coconino	130†	116	*	8	*	*
Gila	60†	46	12	*	*	0
Graham	60†	35	15	11	*	0
Greenlee	10†	8	0	*	*	0
La Paz	20†	14	*	*	0	0
Maricopa	3,476	2,960	38	365	102	11
Mohave	150†	134	0	16	*	0
Navajo	170†	145	*	16	0	*
Pima	784	603	27	123	30	*
Pinal	331	269	12	40	9	*
Santa Cruz	50†	48	0	*	*	0
Yavapai	140†	124	*	16	*	0
Yuma	270†	214	*	18	31	0
Unknown	0	0	0	0	0	0

Notes: * Cell suppressed due to non-zero count less than 6; † Sum rounded to nearest tens unit due to non-zero addend less than 6.

**TABLE 23
SOURCES OF PAYMENT FOR LABOR AND DELIVERY, FEMALES 19 OR YOUNGER
BY AGE GROUP, ARIZONA, 2015**

		Total	Mother's age group			
			<15	15-17	18-19	
Total	Count	5,880 [†]	40 [†]	1,580 [†]	4,261	
Payee for births	AHCCCS	Count	35	1,293	3,552	
		Percent	82.9	85.4	81.7	83.4
	IHS	Count	140 [†]	*	46	90
		Percent	2.3	**	2.9	2.1
	Private insurance	Count	650 [†]	*	168	478
		Percent	11.0	**	10.6	11.2
	Self-pay	Count	200 [†]	*	71	130
		Percent	3.5	**	4.5	3.1
	Unknown	Count	20 [†]	0	*	11
		Percent	0.3	0.0	0.0	0.3

Notes: * Cell suppressed due to non-zero count less than 6; ** Cell suppressed due to rate/ratio/percent based on non-zero count less than 6; [†] Sum rounded to nearest tens unit due to non-zero addend less than 6.

**TABLE 24
TEENAGE BIRTHS BY NUMBER OF PREVIOUS PREGNANCIES BY AGE GROUP,
ARIZONA, 2015**

		Total	Mother's age group			
			<15	15-17	18-19	
Total	Count	5,880†	41	1,582	4,260†	
Total prior pregnancies	None	Count	4,892	41	1,469	3,382
		Percent	83.1	100.0	92.9	79.4
	1	Count	856	0	107	749
		Percent	14.5	0.0	6.8	17.6
	2	Count	123	0	6	117
		Percent	2.1	0.0	0.4	2.7
	3	Count	9	0	0	9
		Percent	0.2	0.0	0.0	0.2
	4 or more	Count	0†	0	0	*
		Percent	0.0	0.0	0.0	0.0
	Unknown	Count	0†	0	0	*
		Percent	0.0	0.0	0.0	0.0

**TABLE 25
TEENAGE BIRTHS BY MARITAL STATUS AND AGE GROUP,
ARIZONA, 2015**

		Total	Mother's age group			
			<15	15-17	18-19	
Total	Count	5,884	41	1,580†	4,261	
Marital status	Married	Count	601	0	78	523
		Percent	10.2	0.0	4.9	12.3
	Unmarried	Count	5,271	41	1,502	3,728
		Percent	89.6	100.0	94.9	87.5
	Other	Count	10†	0	*	10
		Percent	0.2	0.0	**	0.2

**TABLE 26
TEENAGE BIRTHS BY MOTHER'S EDUCATION AND AGE GROUP
ARIZONA, 2015**

		Total	Mother's age group			
			<15	15-17	18-19	
Total	Count	5,880†	41	1,580†	4,260†	
Mother's education	8th Grade or Less	Count	273	29	118	126
		Percent	4.6	70.7	7.5	3.0
	Some High School	Count	3,128	12	1,314	1,802
		Percent	53.2	29.3	83.1	42.3
	High School / GED	Count	1,875	0	126	1,749
		Percent	31.9	0.0	8.0	41.0
	Some College	Count	547	0	13	534
		Percent	9.3	0.0	0.8	12.5
	Associate Degree	Count	40†	0	*	34
		Percent	0.6	0.0	0.0	0.8
	Bachelor's Degree	Count	0†	0	*	*
		Percent	**	0.0	0.0	**
	Postgraduate Education	Count	0.0	0.0	0.0	0.0
		Percent	0.0	0.0	0.0	0.0
	Unknown	Count	24	0	9	15
		Percent	0.4	0.0	0.6	0.4

Notes: * Cell suppressed due to non-zero count less than 6; ** Cell suppressed due to rate/ratio/percent based on non-zero count less than 6; † Sum rounded to nearest tens unit due to non-zero addend less than 6.

**TABLE 27
TEENAGE BIRTHS BY TRIMESTER OF ENTRY INTO PRENATAL CARE
AND AGE GROUP, ARIZONA, 2015**

		Total	Mother's age group			
			<15	15-17	18-19	
Total	Count	5,884	40†	1,582	4,261	
Prenatal care	No care	Count	*	70	157	
		Percent	**	4.4	3.7	
	1st trimester	Count	3,131	14	780	2,337
		Percent	53.2	34.1	49.3	54.8
	2nd trimester	Count	1,622	12	467	1,143
		Percent	27.6	29.3	29.5	26.8
	3rd trimester	Count	596	10	176	410
		Percent	10.1	24.4	11.1	9.6
	Unknown	Count	300†	*	89	214
		Percent	5.2	**	5.6	5.0

**TABLE 28
TEENAGE BIRTHS BY NUMBER OF PRENATAL VISITS AND AGE GROUP,
ARIZONA, 2015**

		Total	Mother's age group			
			<15	15-17	18-19	
Total	Count	5,884	40†	1,582	4,261	
Prenatal visits	No visits	Count	*	70	157	
		Percent	**	4.4	3.7	
	1-4 visits	Count	473	7	143	323
		Percent	8.0	17.1	9.0	7.6
	5-8 visits	Count	1,255	11	349	895
		Percent	21.3	26.8	22.1	21.0
	9-12 visits	Count	2,695	18	709	1,968
		Percent	45.8	43.9	44.8	46.2
	13+ visits	Count	1,170†	*	294	872
		Percent	19.8	**	18.6	20.5
	Unknown	Count	63	0	17	46
		Percent	1.1	0.0	1.1	1.1

Notes: * Cell suppressed due to non-zero count less than 6; ** Cell suppressed due to rate/ratio/percent based on non-zero count less than 6; † Sum rounded to nearest tens unit due to non-zero addend less than 6.

**TABLE 29
TOBACCO USE DURING PREGNANCY AMONG FEMALES 19 OR YOUNGER BY AGE GROUP,
19 OR YOUNGER BY AGE GROUP, ARIZONA, 2015**

		Total	Mother's age group			
			<15	15-17	18-19	
Total	Count	5,884	41	1,580 [†]	4,261	
Substance use	Nonsmoker	Count	41	1,535	4,023	
		Percent	95.2	100.0	97.0	94.4
	Light smoker	Count	179	0	33	146
		Percent	3.0	0.0	2.1	3.4
	Heavy smoker	Count	92	0	12	80
		Percent	1.6	0.0	0.8	1.9
	Unknown	Count	10 [†]	0	*	12
		Percent	0.2	0.0	**	0.3

Notes: * Cell suppressed due to non-zero count less than 6; ** Cell suppressed due to rate/ratio/percent based on non-zero count less than 6; [†] Sum rounded to nearest tens unit due to non-zero addend less than 6.

**TABLE 30
RISK FOR LOW-BIRTHWEIGHT (LBW) BIRTHS BY SELECTED CHARACTERISTICS OF FEMALES 19 OR YOUNGER,
ARIZONA, 2015**

	Mother's age group									
	<15				15-17				18-19	
	Total births	LBW births Count	LBW births Percent	Total births	LBW births Count	LBW births Percent	Total births	LBW births Count	LBW births Percent	
Race/ethnicity	White non-Hispanic	5	*	**	339	39	11.5	1,187	99	8.3
	Hispanic or Latino	28	*	**	972	86	8.8	2,409	168	7.0
	Black or African American	1	0	0.0	77	11	14.3	234	26	11.1
	American Indian or Alaska Native	7	0	0.0	177	10	5.6	385	27	7.0
	Asian	0	0	0.0	17	*	**	46	*	**
		41	*	**	1,535	141	9.2	4,023	307	7.6
Smoking during pregnancy	Nonsmoker	0	0	0.0	33	*	**	146	11	7.5
	Light smoker	0	0	0.0	12	*	**	80	*	**
	Heavy smoker	0	0	0.0	2	0	0.0	12	*	**
	Unknown	0	0	0.0	2	0	0.0	12	*	**
Payee for births	AHCCCS	35	*	**	1,293	120	9.3	3,552	268	7.5
	IHS	2	0	0.0	46	0	0.0	90	6	6.7
	Private insurance	2	0	0.0	168	19	11.3	478	40	8.4
	Self-pay	2	*	**	71	8	11.3	130	7	5.4
	Unknown	0	0	0.0	4	0	0.0	11	*	**
		5	*	**	153	103	67.3	386	210	54.4
Length of gestation	36 weeks or less	36	*	**	1,428	44	28.0	3,871	114	3.0
	37 weeks or more	0	0	0.0	1	0	0.0	4	0	0.0
	Unknown	7	*	**	143	24	16.8	323	52	16.1
Prenatal visits	Less than 5	30	*	**	1,352	114	25.8	3,735	243	20.1
	5 or more	0	0	0.0	17	0	0.0	46	8	17.4
	Unknown	0	0	0.0	17	0	0.0	46	8	17.4

Notes: * Cell suppressed due to non-zero count less than 6; ** Cell suppressed due to rate/ratio/percent based on non-zero count less than 6.

TABLE 31
POPULATION OF FEMALES 19 OR YOUNGER, NUMBER OF PREGNANCIES AND PREGNANCY RATES BY AGE GROUP, AND RACE/ETHNICITY, ARIZONA, 2015

	POPULATION				
	All 19 years or younger	10-14 years	15-19 years	15-17 years	18-19 years
All groups	447,465	225,303	222,162	133,685	88,477
White non-Hispanic	193,599	96,035	97,564	58,663	38,901
Hispanic or Latino	191,729	98,232	93,497	56,515	36,982
Black or African American	24,129	11,960	12,169	7,254	4,915
American Indian or Alaska Native	23,381	11,646	11,735	7,077	4,658
Asian or Pacific Islander	14,627	7,430	7,197	4,176	3,021

Note: The 2015 population denominators are population estimates.

	NUMBER OF PREGNANCIES				
	All 19 years or younger	10-14 years	15-19 years	15-17 years	18-19 years
All groups	7,121	70 [†]	7,055	1,887	5,168
White non-Hispanic	2,024	11	2,013	451	1,562
Hispanic or Latino	3,908	41	3,867	1,103	2,764
Black or African American	400 [†]	*	397	103	294
American Indian or Alaska Native	627	11	616	193	423
Asian or Pacific Islander	92	0	92	20	72

	PREGNANCY RATES PER 1,000 FEMALES				
	All 19 years or younger	10-14 years	15-19 years	15-17 years	18-19 years
All groups	15.9	0.3	31.8	14.1	58.4
White non-Hispanic	10.5	0.1	20.6	7.7	40.2
Hispanic or Latino	20.4	0.4	41.4	19.5	74.7
Black or African American	16.6	**	32.6	14.2	59.8
American Indian or Alaska Native	26.8	0.9	52.5	27.3	90.8
Asian or Pacific Islander	6.3	0.0	12.8	4.8	23.8

Notes: * Cell suppressed due to non-zero count less than 6; ** Cell suppressed due to rate/ratio/percent based on non-zero count less than 6; [†] sum rounded to nearest tens unit due to addend less than 6.

**TABLE 32
POPULATION OF FEMALES 19 OR YOUNGER BY COUNTY OF RESIDENCE, ARIZONA, 2015**

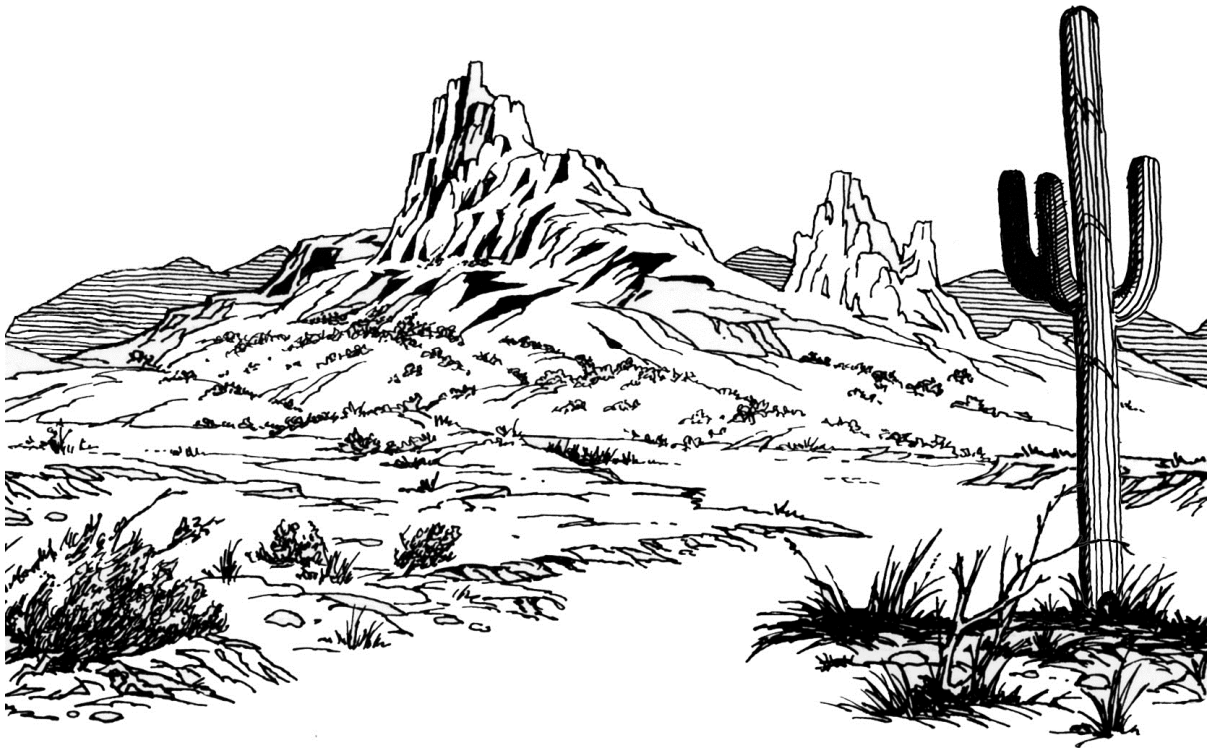
	All 19 years or younger	10-14 years	15-19 years		
			15-19 years	15-17 years	18-19 years
ARIZONA	447,465	225,303	222,162	133,685	88,477
Apache	5,918	3,052	2,866	1,772	1,094
Cochise	7,642	3,884	3,758	2,278	1,480
Coconino	11,311	4,084	7,227	2,523	4,704
Gila	2,925	1,533	1,392	900	492
Graham	2,872	1,488	1,384	868	516
Greenlee	733	376	357	241	116
La Paz	961	480	481	300	181
Maricopa	276,546	141,268	135,278	83,723	51,555
Mohave	10,622	5,484	5,138	3,341	1,797
Navajo	7,989	4,102	3,887	2,530	1,357
Pima	64,047	30,488	33,559	18,128	15,431
Pinal	25,969	14,001	11,968	7,920	4,048
Santa Cruz	4,042	2,074	1,968	1,222	746
Yavapai	10,741	5,336	5,405	3,391	2,014
Yuma	15,147	7,653	7,494	4,548	2,946

Note: Population denominator tables can be found:
<http://www.azdhs.gov/plan/>

**APPENDIX
HOW TO COMPUTE THE RATES OF FIRST AND REPEAT CHILDBEARING**

	2005	2006	2007	2008	2009	2010	2011	2012	2013	2014	2015	Comments
A. The number of females 15-19 years old	208,105	213,698	215,079	218,545	220,555	224,302	225,857	227,395	228,652	220,134	222,162	Genus enumerations for 2010; population estimates for 2005-2015.
B. The number of births to females 15-19 years old	11,748	12,746	12,792	12,000	10,820	9,311	8,334	8,050	7,151	6,577	5,843	Based on the birth database.
C. The rate of births (B/A)*1,000	56.5	59.6	59.4	54.9	49.1	41.5	36.9	35.4	31.3	29.9	26.3	The number of births per 1,000 females 15-19 years old.
D. Cumulative number of mothers who gave birth when 15-19 years old	25,761	26,916	27,486	26,958	25,352	25,892	19,816	17,929	16,031	14,384	12,800	Mothers who gave birth when 15-19 years old. As an example, the 2015 cohort of mothers who were 15-19 years old includes 5,843 who gave birth that year and 7,367 who gave birth prior to 2015 and were still 15-19 years old in 2015 (Table 13).
E. The number of females 15-19 years old who had a birth previously (D-B)	14,013	14,170	14,694	14,958	14,532	16,581	11,482	9,879	8,880	7,807	6,957	The cumulative number of mothers 15-19 years old (Table 13) minus those who gave birth that year.
F. The number of repeat births to females 15-19 years old who had a birth previously	2,488	2,864	2,800	2,658	2,252	1,898	1,639	1,521	1,300	1,161	990	Table 1B-23 in "Arizona Health Status and Vital Statistics" annual report.
G. The rate of repeat childbearing (F/E)*1,000	177.5	202.1	190.6	177.7	155.0	114.5	142.7	154.0	146.4	148.7	142.3	The number of repeat births per 1,000 females 15-19 years old who had a birth previously.
H. The number of females 15-19 years old who did not have a birth previously (A-E)	194,092	199,528	200,385	203,587	206,023	207,721	214,375	217,516	219,772	212,327	215,205	All 15-19 years old - those who gave birth previously.
I. The number of first-time births to females 15-19 years old who did not have a birth previously	9,259	9,880	9,992	9,342	8,568	7,409	6,683	6,522	5,844	5,414	4,851	Table 1B-23 in "Arizona Health Status and Vital Statistics" annual report.
J. The rate of first-time births (I/H)*1,000	47.7	49.5	49.9	45.9	41.6	35.7	31.2	30.0	26.6	25.5	22.5	The number of first-time births per 1,000 females 15-19 years old who did not have a birth previously.

Our Web site at <http://www.azdhs.gov/plan> provides access to a wide range of statistical information about the health status of Arizonans. The Arizona Health Status and Vital Statistics annual report examines trends in natality, mortality, and morbidity towards established health objectives. In addition to the print and original online versions, the 2015 report is made available as a mobile-friendly e-book. Additional reports and studies include Advance Vital Statistics by County of Residence, Injury Mortality among Arizona Residents (accidents, suicides, homicides, legal intervention, firearm-related fatalities, drug-related deaths, drowning deaths, falls among Arizonans 65 years or older), Hospital Inpatient and Emergency Room Statistics (first-listed diagnosis, procedures, mental disorders, asthma, diabetes, influenza and pneumonia, and substance abuse), Community Vital Statistics, Teenage Pregnancy, Differences in Health Status Among Racial/Ethnic Groups, and Health Status Profile of American Indians in Arizona.



ARIZONA DEPARTMENT OF HEALTH SERVICES
Bureau of Public Health Statistics
Population Health and Vital Statistics Section