

# **TEENAGE PREGNANCY ARIZONA, 2006-2016**



ARIZONA DEPARTMENT  
OF HEALTH SERVICES

~ Health and Wellness for all Arizonans ~



**Doug A. Ducey, Governor**  
**State of Arizona**

**Cara M. Christ, M.D., M.S., Director**  
**Arizona Department of Health Services**

**ARIZONA DEPARTMENT OF HEALTH SERVICES  
BUREAU OF PUBLIC HEALTH STATISTICS  
POPULATION HEALTH AND VITAL STATISTICS SECTION**

150 North 18th Avenue, Suite 550

Phoenix, Arizona 85007

Phone: 602-542-7333; FAX: 602-542-2940

<http://pub.azdhs.gov/health-stats>

**This publication can be made available in alternative format.  
Please contact the Bureau of Public Health Statistics  
at 602-542-7333 (voice) or call 1-800-367-8939 (TDD).**

***The Arizona Department of Health Services is  
an Equal Employment Opportunity Agency.***

***Permission to quote from or reproduce materials from this  
publication is granted when due acknowledgment is made.***

# **TEENAGE PREGNANCY, ARIZONA, 2006-2016**

---

**by**

**Marguerite L. Sagna, Ph.D., Arizona Vital Statistician  
Sanhita Gupta, Vital Statistics Health Management Analyst  
Clare Torres, Senior Health Data Analyst**

**January 2018**



# TEENAGE PREGNANCY, ARIZONA, 2006-2016

## Table of Contents

<b>PURPOSE</b> .....	<b>1</b>
<b>METHODS AND SOURCES</b> .....	<b>1</b>
<b>DATA ORGANIZATION</b> .....	<b>1</b>
<b>COMPARATIVE NATIONAL AND STATE DATA</b> .....	<b>2</b>
<b>KEY FINDINGS</b> .....	<b>2</b>
<b>DATA TABLES</b> .....	<b>11</b>

## List of Figures

<b>Figure 1</b> .....	<b>3</b>
PREGNANCY RATES BY AGE GROUP AND YEAR AMONG FEMALES 19 OR YOUNGER, ARIZONA, 2006-2016	
<b>Figure 2</b> .....	<b>3</b>
TRENDS IN THE NUMBER OF PREGNANCIES AND PREGNANCY RATES AMONG FEMALES 19 OR YOUNGER, ARIZONA, 2006-2016	
<b>Figure 3</b> .....	<b>4</b>
TRENDS IN THE NUMBER OF PREGNANCIES BY RACE/ETHNICITY AMONG FEMALES 19 OR YOUNGER, ARIZONA, 2006-2016	
<b>Figure 4</b> .....	<b>4</b>
COMPARISON OF PREGNANCY RATES BY YEAR AMONG HISPANIC OR LATINOS AND ALL FEMALES 19 OR YOUNGER, ARIZONA, 2006-2016	
<b>Figure 5</b> .....	<b>5</b>
COMPARISON OF PREGNANCY RATES BY YEAR AMONG WHITE NON-HISPANICS AND ALL FEMALES 19 OR YOUNGER, ARIZONA, 2006-2016	
<b>Figure 6</b> .....	<b>5</b>
COMPARISON OF PREGNANCY RATES BY YEAR AMONG AMERICAN INDIAN OR ALASKA NATIVES AND ALL FEMALES 19 OR YOUNGER, ARIZONA, 2006-2016	
<b>Figure 7</b> .....	<b>6</b>
COMPARISON OF PREGNANCY RATES BY YEAR AMONG BLACK OR AFRICAN AMERICANS AND ALL FEMALES 19 OR YOUNGER, ARIZONA, 2006-2016	
<b>Figure 8</b> .....	<b>6</b>
COMPARISON OF PREGNANCY RATES BY YEAR AMONG ASIAN OR PACIFIC ISLANDERS AND ALL FEMALES 19 OR YOUNGER, ARIZONA, 2006-2016	
<b>Figure 9</b> .....	<b>7</b>
PROPORTIONAL CONTRIBUTION OF SURGICAL AND NON-SURGICAL ABORTIONS BY YEAR AMONG FEMALES 19 OR YOUNGER, ARIZONA, 2006-2016	
<b>Figure 10</b> .....	<b>7</b>
CUMULATIVE NUMBER OF MOTHERS WHO WERE 19 OR YOUNGER IN ARIZONA BY YEAR, 2006-2016	
<b>Figure 11</b> .....	<b>8</b>
RATES OF FIRST AND REPEAT BIRTHS TO FEMALES 15-19 YEARS, ARIZONA, 2006 AND 2016	
<b>Figure 12</b> .....	<b>8</b>
BIRTHS TO MOTHERS 19 OR YOUNGER BY MARITAL STATUS, ARIZONA, 1996, 2006, AND 2016	
<b>Figure 13</b> .....	<b>9</b>
NUMBER OF BIRTHS TO MOTHERS 19 OR YOUNGER BY PAYER, ARIZONA, 2006 AND 2016	
<b>Figure 14</b> .....	<b>9</b>
TRENDS IN THE INCIDENCE OF SEXUALLY TRANSMITTED INFECTIONS AMONG FEMALES 15-19 YEARS, ARIZONA, 2006-2016	
<b>Figure 15</b> .....	<b>10</b>
BIRTH RATES FOR TEENAGERS 15-19 YEARS, NATIONALLY AND IN ARIZONA, 2006-2016	
<b>Figure 16</b> .....	<b>10</b>
BIRTH RATES FOR HISPANIC OR LATINO TEENAGERS 15-19 YEARS, NATIONALLY AND IN ARIZONA, 2006-2016	

## List of Tables

<b>Table 1</b> .....	12
PREGNANCIES AND PREGNANCY OUTCOME BY AGE GROUP AND YEAR, FEMALES 19 OR YOUNGER, ARIZONA, 2006-2016	
<b>Table 2</b> .....	13
PREGNANCY RATES BY PREGNANCY OUTCOME, AGE GROUP, AND YEAR, FEMALES 19 OR YOUNGER, ARIZONA, 2006-2016	
<b>Table 3</b> .....	14
LIVE BIRTHS TO FEMALES 19 OR YOUNGER BY AGE GROUP, RACE/ETHNICITY, AND YEAR, ARIZONA, 2006-2016	
<b>Table 4</b> .....	15
ABORTIONS TO FEMALES 19 OR YOUNGER BY AGE GROUP, RACE/ETHNICITY, AND YEAR, ARIZONA, 2006-2016	
<b>Table 5</b> .....	16
NUMBER OF PREGNANCIES BY PREGNANCY OUTCOME, RACE/ETHNICITY, AND YEAR AMONG FEMALES AGE 17 OR YOUNGER WITH RATES, ARIZONA, 2006-2016	
<b>Table 6</b> .....	17
NUMBER OF PREGNANCIES BY PREGNANCY OUTCOME, RACE/ETHNICITY, AND YEAR AMONG FEMALES 15-17 YEARS OLD WITH RATES, ARIZONA, 2006-2016	
<b>Table 7</b> .....	18
NUMBER OF PREGNANCIES BY PREGNANCY OUTCOME, RACE/ETHNICITY, AND YEAR AMONG FEMALES 18-19 YEARS OLD WITH RATES, ARIZONA, 2006-2016	
<b>Table 8</b> .....	19
NUMBER OF PREGNANCIES BY PREGNANCY OUTCOME, RACE/ETHNICITY, AND YEAR AMONG FEMALES 19 OR YOUNGER WITH RATES, ARIZONA, 2006-2016	
<b>Table 9</b> .....	20
TRENDS IN PREGNANCY RATES BY COUNTY OF RESIDENCE AMONG FEMALES 10-17 YEARS, 18-19 YEARS, AND 19 YEARS OR YOUNGER, ARIZONA, 2006-2016	
<b>Table 10</b> .....	21
LIVE BIRTHS TO FEMALES 19 OR YOUNGER AS A PERCENTAGE OF TOTAL LIVE BIRTHS BY AREA, RACE/ETHNICITY, AND YEAR, ARIZONA, 2006-2016	
<b>Table 11</b> .....	22
BIRTH RATES BY AGE GROUP FOR FEMALES 19 OR YOUNGER, ARIZONA AND UNITED STATES, 2006-2016	
<b>Table 12</b> .....	23
REPEAT PREGNANCIES AMONG TEENAGE MOTHERS GIVING BIRTH BY AGE AND YEAR, ARIZONA, 2006-2016	
<b>Table 13</b> .....	24
CUMULATIVE NUMBER OF MOTHERS WHO WERE 19 OR YOUNGER IN ARIZONA IN 2016	
<b>Table 14</b> .....	25
TRENDS IN TEEN PREGNANCY RATES BY RACE/ETHNICITY AND AGE GROUP, ARIZONA, 2006-2016	
<b>Table 15</b> .....	26
TRENDS IN SEXUALLY TRANSMITTED INFECTIONS BY AGE GROUP AND YEAR AMONG FEMALES 10-19 YEARS, ARIZONA, 2006-2016	
<b>Table 16</b> .....	27
TRENDS IN THE INCIDENCE RATES OF SEXUALLY TRANSMITTED INFECTIONS BY AGE GROUP AND YEAR AMONG FEMALES 10-19 YEARS, ARIZONA, 2006-2016	
<b>Table 17</b> .....	28
PREGNANCIES AND PREGNANCY RATES OF FEMALES 19 OR YOUNGER BY COUNTY OF RESIDENCE, ARIZONA, 2016	
<b>Table 18</b> .....	29
BIRTHS AND BIRTH RATES, FEMALES 19 OR YOUNGER BY COUNTY OF RESIDENCE, ARIZONA, 2016	
<b>Table 19</b> .....	30
PREGNANCY RATES AND NUMBER OF LIVE BIRTHS, FETAL DEATHS, AND ABORTIONS TO TEENS BY INDIVIDUAL AGE, ARIZONA, 2016	
<b>Table 20</b> .....	31
BIRTHS TO FEMALES 19 OR YOUNGER BY AGE AND COUNTY OF RESIDENCE, ARIZONA, 2016	
<b>Table 21</b> .....	32
ABORTIONS TO FEMALES 19 OR YOUNGER BY AGE AND COUNTY OF RESIDENCE, ARIZONA, 2016	

## List of Tables (continued)

<b>Table 22</b> .....	33
SOURCES OF PAYMENT FOR LABOR AND DELIVERY, FEMALES 19 OR YOUNGER BY AGE, AND COUNTY OF RESIDENCE, ARIZONA, 2016	
<b>Table 23</b> .....	34
SOURCES OF PAYMENT FOR LABOR AND DELIVERY, FEMALES 19 OR YOUNGER BY AGE GROUP, ARIZONA, 2016	
<b>Table 24</b> .....	35
TEENAGE BIRTHS BY NUMBER OF PREVIOUS PREGNANCIES BY AGE GROUP, ARIZONA, 2016	
<b>Table 25</b> .....	35
TEENAGE BIRTHS BY MARITAL STATUS AND AGE GROUP, ARIZONA, 2016	
<b>Table 26</b> .....	35
TEENAGE BIRTHS BY MOTHER'S EDUCATION AND AGE GROUP, ARIZONA, 2016	
<b>Table 27</b> .....	36
TEENAGE BIRTHS BY TRIMESTER OF ENTRY INTO PRENATAL CARE AND AGE GROUP, ARIZONA, 2016	
<b>Table 28</b> .....	36
TEENAGE BIRTHS BY NUMBER OF PRENATAL VISITS AND AGE GROUP, ARIZONA, 2016	
<b>Table 29</b> .....	37
TOBACCO AND/OR ALCOHOL USE DURING PREGNANCY AMONG FEMALES 19 OR YOUNGER BY AGE GROUP, ARIZONA, 2016	
<b>Table 30</b> .....	38
RISK FOR LOW-BIRTHWEIGHT (LBW) BIRTHS BY SELECTED CHARACTERISTICS OF FEMALES 19 OR YOUNGER, ARIZONA, 2016	
<b>Table 31</b> .....	39
POPULATION OF FEMALES 19 OR YOUNGER, NUMBER OF PREGNANCIES AND PREGNANCY RATES BY AGE GROUP, AND RACE/ETHNICITY, ARIZONA, 2016	
<b>Table 32</b> .....	40
POPULATION OF FEMALES 19 OR YOUNGER BY COUNTY OF RESIDENCE, ARIZONA, 2016	
<b>Appendix</b> .....	41
HOW TO COMPUTE THE RATES OF FIRST AND REPEAT CHILDBEARING	





## PURPOSE

This report is the annual update of information about pregnancies among females under age 20. The data for 2016 is placed in a temporal context by comparing it with the data from the preceding years. Earlier reports are available online at <http://pub.azdhs.gov/health-stats/report/tp/index.php>.

## METHODS AND SOURCES

In this report, pregnancies are measured as the sum of three components: live births, fetal deaths (or stillbirths), and reported abortions to Arizona resident women, unless otherwise specified. Not included are spontaneous fetal losses that occur at less than 20 weeks of gestation. Induced terminations of pregnancy do not include those performed out-of-state to Arizona residents, since they are not reported in Arizona. Pregnancy statistics for Arizona are not available on a sub-county level.

Teens are defined as 10-14 year old preadolescents and adolescents 15-19 years of age. Where possible, the data presented distinguishes 18-19 year old teenagers from those aged 15-17 and girls less than 15 years of age.

The primary source documents for the data are the certificates of live births, certificates of fetal deaths, and reports of induced terminations of pregnancy filed with the Arizona Department of Health Services.

The population denominators for Arizona's resident females used to calculate rates for 2003-2009 and 2011-2016 are population estimates of Arizona resident females aged 10-19 years. The 2010 denominators are the actual census enumerations from the U.S. Census Bureau. Detailed information about the assumptions and specific data sources is available online at <http://pub.azdhs.gov/health-stats/menu/info/pop/index.php>.

The 2016 Teenage Pregnancy report suppresses information in tables with small cell sizes. To protect the anonymity of the individuals included in this report, cells in tables with five or fewer observations are denoted by an asterisk (\*), cells containing rates based on counts of five or fewer are denoted by a double-asterisk (\*\*), and cells containing sums based on addends of five or fewer are rounded to the nearest tens-unit and denoted by a dagger (†).

## DATA ORGANIZATION

Tables 1-14 present annual numbers and rates of pregnancy, fertility, and abortion by year from 2006 to 2016 for Arizona teens. Information is presented for specific age groups and by race/ethnicity. Temporal trends and changes may be assessed from this data. Proportional contribution of teen births to all births is shown in Table 10 by area of residence and race/ethnic group in Arizona from 2006 to 2016. Table 11 compares birth rates in Arizona to those in the United States. The annual numbers of repeat pregnancies among teenage mothers are shown by age and year from 2006 to 2016 in Table 12.

Table 14 presents teen pregnancy rates by race/ethnicity and age group by year from 2006 to 2016. Table 15 provides information about the incidence of sexually transmitted infections among females 10-14 and 15-19 years old in Arizona in 2006-2016. Table 16 shows the incidence rates by year from 2006 to 2016.

Frequency counts, proportions, and rates in Tables 17-32 all apply to the 2016 data. Tables 17-18 and 20-22 provide data by county of residence. Table 19 presents pregnancy rates by single year of age among females 19 and younger. Live births to teenage mothers are also reported in Tables 23-30 by source of payment for labor and delivery, previous pregnancies, marital status, education, trimester of entry into prenatal care, number of prenatal visits, tobacco use during pregnancy, and risk for low-birthweight by selected characteristics. The 2016 population denominators for Arizona resident females by age group and race/ethnicity, as well as by age group and county of residence, are presented in Table 31 and Table 32. The *Appendix* demonstrates "How to compute the rates of first and repeat childbearing" using the annual data for 2006-2016.

## COMPARATIVE NATIONAL AND STATE DATA

Timely, comparable, and reliable teen pregnancy statistics for other States and the Nation provide meaningful comparisons to place Arizona's teenage birth experiences in context. The Center for Disease Control (CDC) provides a useful source of information on national pregnancy outcomes. The most recent national abortion data provided by the CDC available is for 2013<sup>1</sup> and the most recent fetal death data distributed by the CDC is available for 2014<sup>2</sup>. Another source of national data on reproductive health is the Guttmacher Institute. The latest report<sup>3</sup>, published by the Institute in April 2016, covers statistics available on the incidence of teen pregnancy, birth and abortion in the United States for 2011, with trend analysis since 1973. The authors present the complete count of births provided by every state to the NCHS in combination with the estimated numbers of abortions, early miscarriages, and fetal deaths. The number of abortions is estimated from surveys the Alan Guttmacher Institute conducts of known abortion providers (i.e. these data are by the place of occurrence and not by the woman's place of residence). The fetal loss estimates – including early miscarriages before 20 weeks of gestation (and estimated as 20% of live births plus 10% of abortions) - are from pregnancy history information collected by the National Survey of Family Growth (NSFG). Unlike vital statistics reports of fetal losses occurring at gestations of 20 weeks or more, NSFG include all gestations. Since the majority of fetal losses occur early in pregnancy before the reporting requirements for fetal deaths are in effect, their inclusion dramatically raises both the fetal loss rate and the pregnancy rate. The National Survey of Family Growth data are not state-specific. The pregnancy rates for Arizona teens cannot be compared with the rates for their peers nationally.

No comparable state-by-state teen pregnancy data for 2006 – 2016 are available at this time.

## KEY FINDINGS

The following section presents some illustrative findings contained in the figures and tables of the report. It is not intended to be an exhaustive analysis of the tabulated data.

- **In 2016, the pregnancy rate of 14.9 pregnancies per 1,000 females 19 years or younger was 56.2 percent lower than the rate of 34.1 per 1,000 in 2006. The teen pregnancy rate of 14.9 per 1,000 females 19 years or younger was the lowest teen pregnancy rate since at least 1983.**
- **It is only since 2008 that the reduction in the number of teen pregnancies was accompanied by an equally impressive decline in pregnancy rates.**
- **Historically, the declines in teenage pregnancy have been steeper for younger than for older teenagers, but recently are becoming more closely aligned. The rate for teenagers 15-17 years dropped steeply by 67.7 percent from 39.0 per 1,000 in 2006 to 12.6 in 2016. The rate for older teenagers (aged 18-19 years) fell by 52.4 percent from 115.6 per 1,000 in 2006 to 55.0 per 1,000 in 2016.**
- **The 2016 teen pregnancy rate of 14.9 per 1,000 was based on 6,724 pregnancies occurring among 450,084 females aged 10-19 years. The number of 6,724 teen pregnancies in 2016 was 5.6 percent lower than 2015 and was the lowest number of teen pregnancies since 1984.**
- **From 2007 to 2016, the number of teen pregnancies declined most among Hispanic or Latino teens (56.4 percent), followed by declines among American Indians (57.2 percent), and White non-Hispanic teens (55.3 percent).**
- **In 2016, Hispanic or Latino females accounted for 55.4 percent of all pregnancies in this age group, followed by White non-Hispanics (27.3 percent).**
- **In each year from 2006 to 2016, the pregnancy rates of Hispanic or Latino females were consistently greater than the average rates for all females 19 years or younger in Arizona. In 2016, the Hispanic rate exceeded the average rate for all groups by 28.9 percent.**
- **If the 2016 "risk of pregnancy" for Asian teens (i.e., their pregnancy rate of 5.0 per 1,000), were to be applied to all Arizona females 19 years or younger, it would reduce the number of Arizona teen pregnancies from 6,724 to just 2,250 ((5.0 per 1,000) \* 450,084).**
- **The first birth rate for childless teenagers has dropped 58.7 percent from 49.5 first-time births per 1,000 females 15-19 years old in 2006 to 20.4 per 1,000 in 2016.**
- **The repeat birth rates for teenagers who had already had a child decreased by 30.1 percent from 202.1 in 2006 to 141.2 per 1,000 females 15-19 years old in 2016, who had a previous birth.**
- **Unwed mothers have accounted for an increasing annual proportion of births throughout the 1990s and 2000s. In 2016, non-marital births accounted for 89.7 percent of births to mothers 19 years or younger.**
- **The total number of births to mothers 19 years or younger decreased by 58.3 percent from 12,916 in 2006 to 5,390 in 2016. In contrast, the proportional share of births paid for by the Arizona Health Care Cost Containment System (AHCCCS, the State's Medicaid program) increased from 79.9 percent in 2006 to 83.4 percent in 2016.**

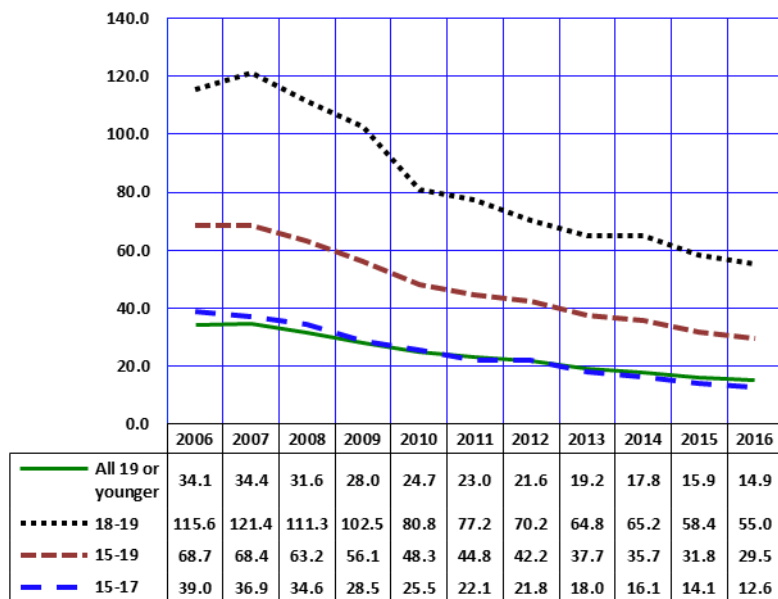
<sup>1</sup><https://www.cdc.gov/mmwr/volumes/65/ss/ss6512a1.htm>

<sup>2</sup>[https://www.cdc.gov/nchs/nvss/fetal\\_death.htm](https://www.cdc.gov/nchs/nvss/fetal_death.htm)

<sup>3</sup><https://www.guttmacher.org/report/us-teen-pregnancy-trends-2011>

KEY FINDINGS

**Figure 1**  
Pregnancy Rates by Age Group and Year among Females 19 or Younger, Arizona, 2006-2016

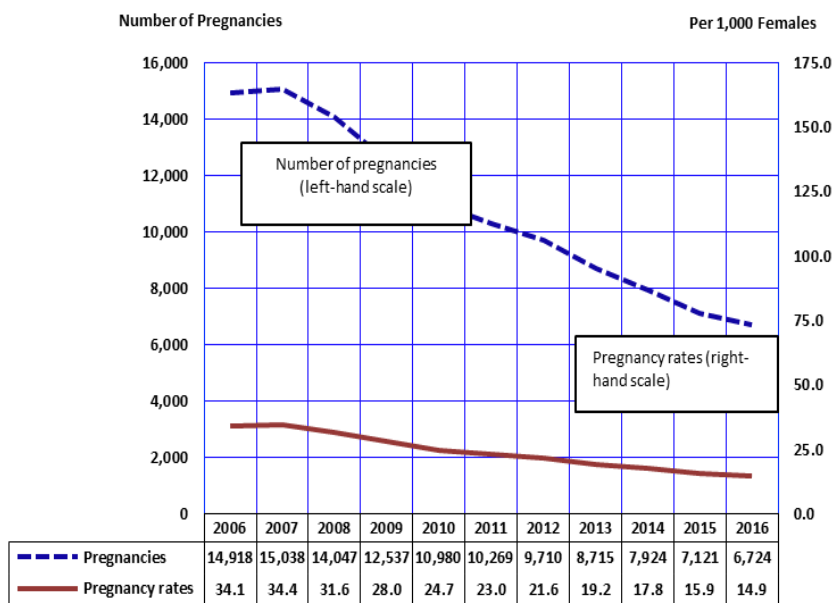


Teenage pregnancy rates dropped 56.2 percent overall from 2006 to 2016. (Figure 1, Table 2). The declines in teenage pregnancy have been much steeper for younger than for older teenagers. The rate for teenagers 15-17 years dropped steeply by 67.7 percent from 39.0 per 1,000 in 2006 to 12.6 in 2016. The rate for older teenagers (aged 18-19 years) fell by 52.4 percent from 115.6 per 1,000 in 2006 to 55.0 per 1,000 in 2016.

From 2007 to 2016, birth rate of teenagers 19 years old or younger declined; fetal losses rate fell and remained pretty stable at 0.1 per 1,000 females, while the abortion rate increased from 2010 to 2011 and returned to 3.4 per 1,000 females in 2012 then declined at 2.9 per 1,000 females in 2016 (Table 2). The increase in the teenage abortion rate from 2010 to 2011 is likely attributable to changes in abortion reporting requirements that took effect in 2011.

Note: All rates are per 1,000 females in specified group.

**Figure 2**  
Trends in the Number of Pregnancies and Pregnancy Rates among Females 19 or Younger, Arizona, 2006-2016



Trends in the number of pregnancies to teenage women do not always parallel the pregnancy rate. The teen pregnancy rate measures the proportion of teenagers becoming pregnant in a given year; in other words, the relative "risk for pregnancy" in a population "at risk." The number of pregnancies is, however, also determined by the size of the population "at risk," or in this case by the number of teenage females in the population.

The 2016 teen pregnancy rate of 14.9 per 1,000 was based on 6,724 pregnancies occurring among 450,084 females aged 10-19 years. The number of 6,724 teen pregnancies in 2016 was 5.6 percent lower than 2015 and was the lowest number of teen pregnancies since 1984.

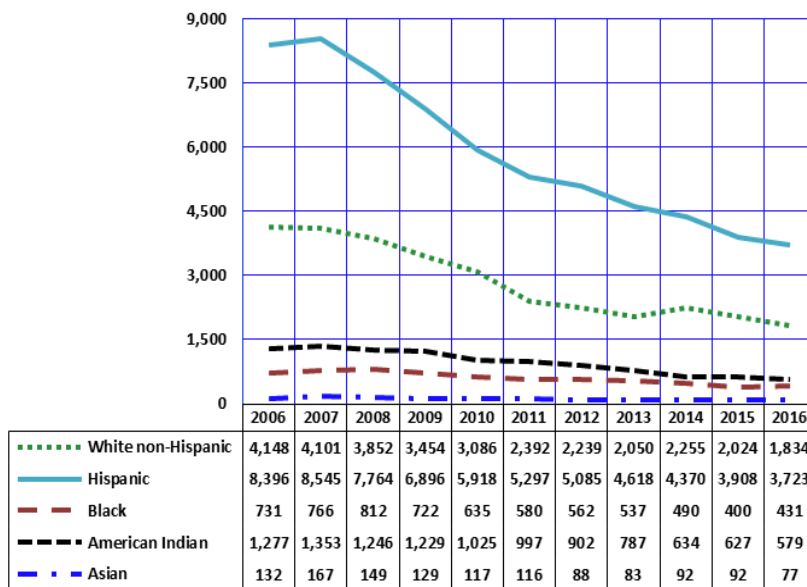
Note: Pregnancy rate = the number of pregnancies per 1,000 females in specified group.

KEY FINDINGS

**Figure 3**  
Trends in the Number of Pregnancies\* by Race/Ethnicity among Females 19 or Younger, Arizona, 2006-2016

The number of pregnancies to Hispanic females aged 19 years or younger exceeded the number of pregnancies among White non-Hispanic peers in every year since 1994 (Figure 3 and Table 8 in this report show only the data for 2006-2016). In 2016, Hispanic or Latino females accounted for 55.4 percent of all pregnancies in this age group, followed by White non-Hispanics (27.3 percent). Black or African American, Asian or Pacific Islander, and American Indian females aged 19 years or younger accounted for a larger share of pregnancies in 2016 (16.2 percent) than they did in 2006 (14.3 percent).

From 2007 to 2016, the number of teen pregnancies declined particularly steeply for American Indians (57.2 percent), Hispanic or Latino (56.4 percent), and White non-Hispanic (55.3 percent).



Note: The sum of live births + induced abortions + spontaneous fetal deaths.

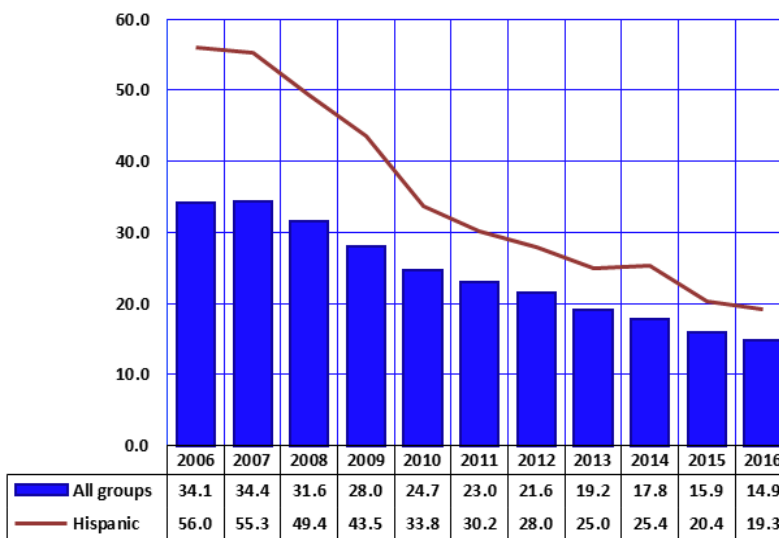
**Figure 4**  
Comparison of Pregnancy Rates by Year among Hispanic or Latinos and all Females 19 or Younger, Arizona, 2006-2016

The teen pregnancy rates for all race and ethnic groups were lower in 2016 than in 2006 (Figure 1). However, the temporal trends in annual teen pregnancy rates differed considerably by race/ ethnicity.

Figures 4, 5, 6, 7, and 8 reveal race/ ethnicity-specific trends in teen pregnancy rates in Arizona in 2006-2016.

From 2006 to 2016, the teenage pregnancy rate for Hispanic or Latino women declined more than 50 percent (65.6 percent), with the majority of the decline occurring between 2007 and 2016 (Figure 4).

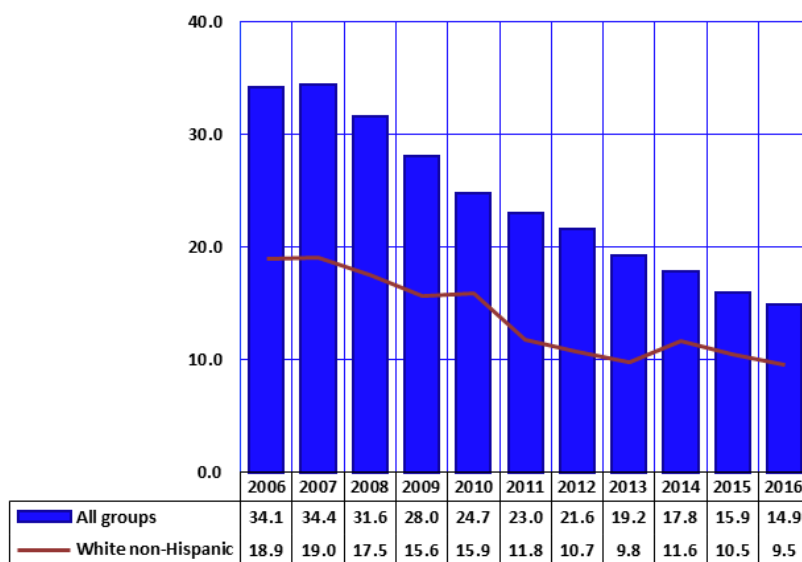
In each year from 2006 to 2016, the pregnancy rates of Hispanic or Latino females were consistently greater than the average rates for all females 19 years or younger in Arizona. In 2016, the Hispanic rate exceeded the average rate for all groups by 29.5 percent.



Note: All rates are per 1,000 females in specified group.

KEY FINDINGS

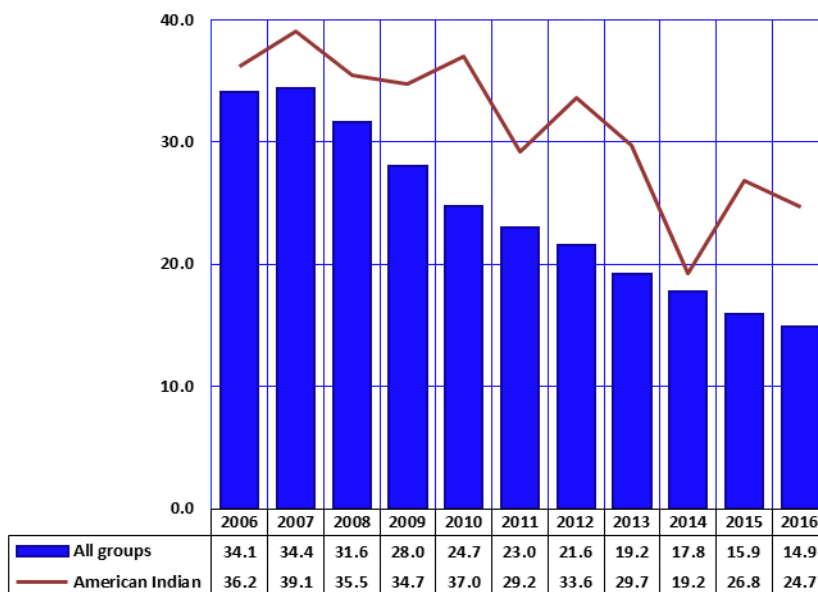
**Figure 5**  
**Comparison of Pregnancy Rates by Year among White non-Hispanics**  
**and all Females 19 or Younger, Arizona, 2006-2016**



The pregnancy rate for White non-Hispanics has substantially declined from 2006 to 2016 (49.7 percent) save for an increase from 2006 to 2008 (Figure 5). In each year from 2006 to 2016, the pregnancy rates for White non-Hispanic females were lower than the average rates for all females 19 years or younger in Arizona.

Note: All rates are per 1,000 females in specified group.

**Figure 6**  
**Comparison of Pregnancy Rates by Year among American Indian**  
**or Alaska Natives and all Females 19 or Younger, Arizona, 2006-2016**



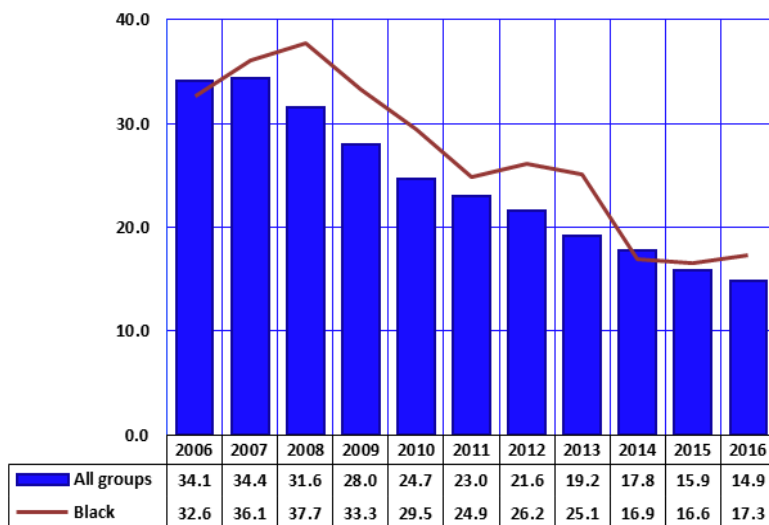
The pregnancy rate among American Indian females 19 years or younger varied somewhat erratically from 2006 to 2016, showing a 21.1 percent decrease from 2010 to 2011, a 15.1 percent increase from 2011 to 2012, a 35.4 decline from 2013 to 2014, an increase in 2015, then again a 7.8 decrease in 2016 (Figure 6). The American Indian teenage pregnancy rate was higher than the average for all groups from 2006 to 2016.

Note: All rates are per 1,000 females in specified group.

KEY FINDINGS

**Figure 7**  
**Comparison of Pregnancy Rates by Year among Black or African Americans and all Females 19 or Younger, Arizona, 2006-2016**

Pregnancy rates for Black or African American females 19 years or younger decreased from 32.6 per 1,000 in 2006 to 17.3 per 1,000 in 2016 (Figure 7). Excluding 2006 and 2014, the pregnancy rates for Black or African American teenagers exceeded the pregnancy rate for all groups.

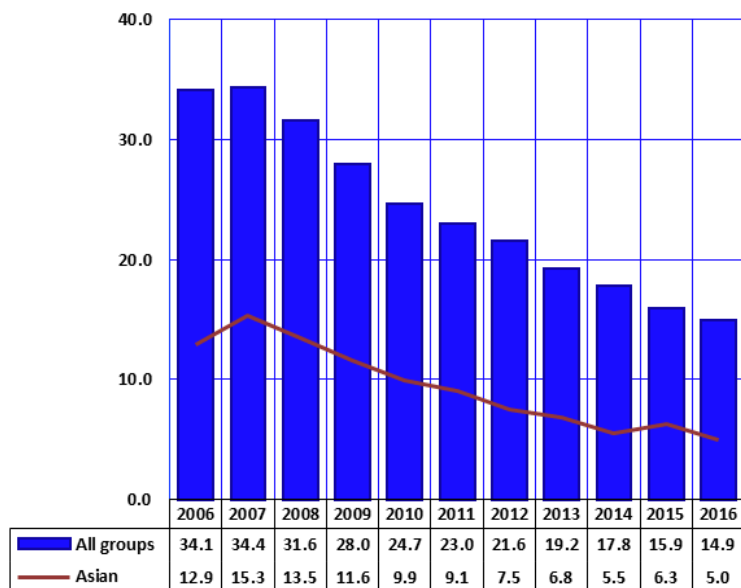


Note: All rates are per 1,000 females in specified group.

**Figure 8**  
**Comparison of Pregnancy Rates by Year among Asian or Pacific Islanders and all Females 19 or Younger, Arizona, 2006-2016**

In each year from 2006 to 2016, the pregnancy rates for Asian or Pacific Islander females 19 years or younger were substantially lower than the average rates among all females 19 years or younger in Arizona (Figure 8). In 2016, the Asian rate (5.0 per 1,000) was 66.5 percent lower than the rate for all groups (14.9 per 1,000).

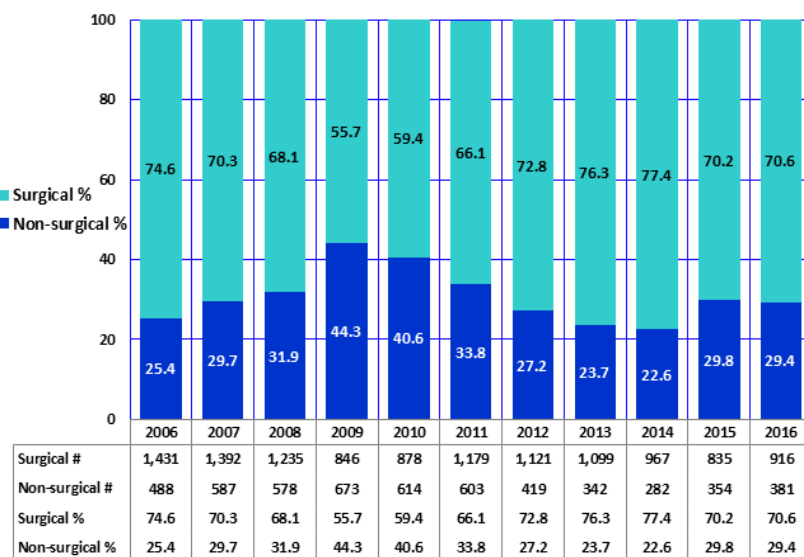
If the 2016 "risk for pregnancy" of Asian teens (i.e., their pregnancy rate) applied to all Arizona females 19 years or younger, the number of teen pregnancies in the State would have been reduced from 6,724 to approximately 2,250 ((5.0 per 1,000) \* 450,084).



Note: All rates are per 1,000 females in specified group.

KEY FINDINGS

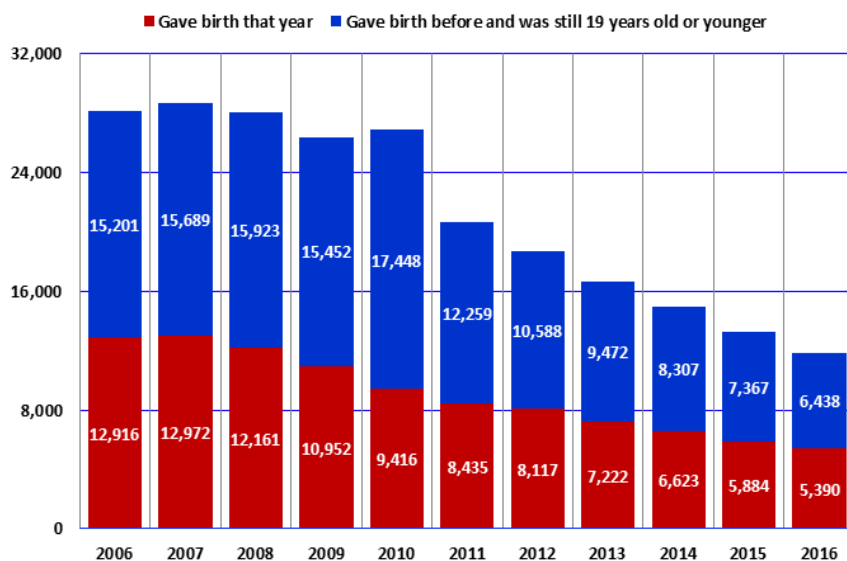
**Figure 9**  
**Proportional Contribution of Surgical and Non-Surgical Abortions**  
**by Year among Females 19 or Younger, Arizona, 2006-2016**



The proportion of non-surgical abortions to females 19 years or younger decreased from 40.6 percent in 2010 to 29.4 percent in 2016, indicating the proportion of surgical abortions decreased 4.3 percent over that period (Figure 9).

Note: Non-surgical - Mifepristone, Methotrexate, RU486, etc.

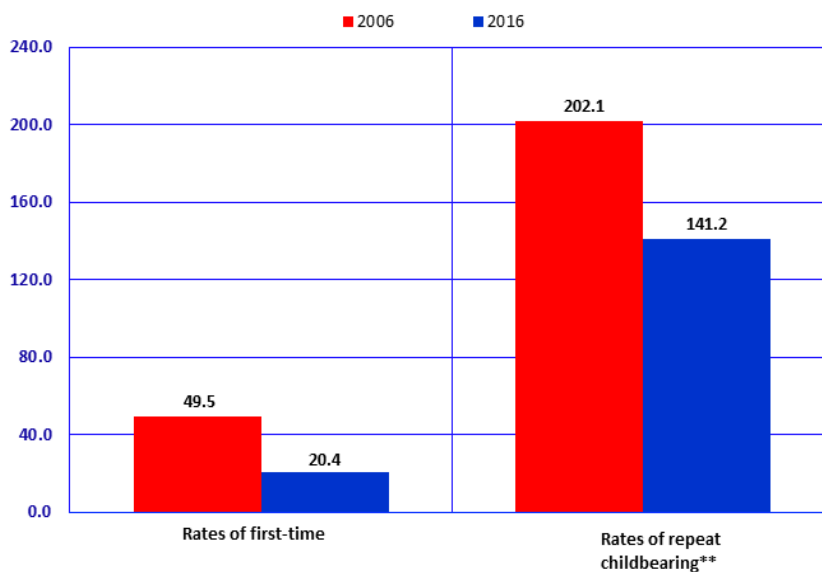
**Figure 10**  
**Cumulative Number of Mothers who were 19 or Younger**  
**in Arizona by Year, 2006-2016**



There were approximately 11,828 mothers under the age of 20 in Arizona in 2016. Among them there were the 5,390 who gave birth in 2016 and the 6,438 who gave birth prior to 2016 and were still 19 years old or younger in 2016 (Figure 10, Table 13). The cumulative number of mothers who were 19 years or younger in Arizona in 2016 decreased by 56.0 percent from 26,864 in 2010.

KEY FINDINGS

**Figure 11**  
Rates of First and Repeat Births to Females 15-19 Years, Arizona, 2006 and 2016

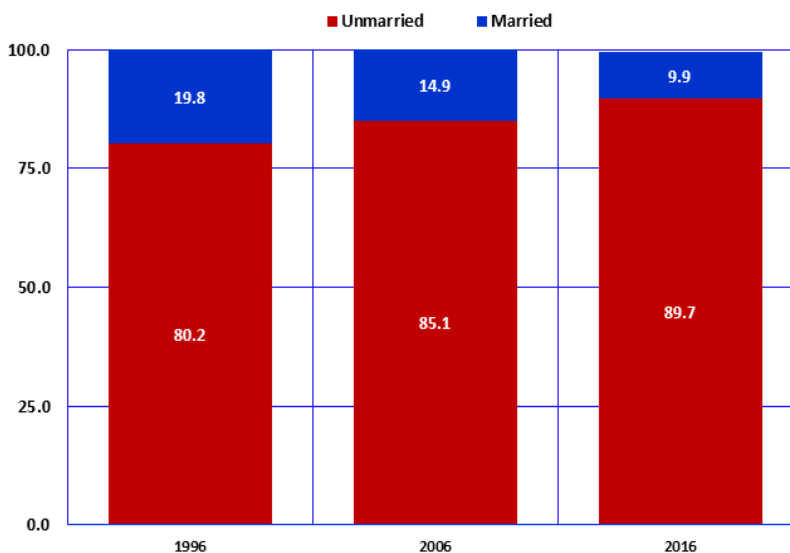


The first birth rate for childless teenagers has dropped 58.7 percent from 49.5 first-time births per 1,000 females 15-19 years old in 2006 to 20.4 per 1,000 in 2016 (Figure 12).

The repeat birth rates for teenagers who had already had a child decreased by 30.1 percent from 202.1 in 2006 to 141.2 per 1,000 females 15-19 years old in 2016 who had a previous birth (Figure 12).

Notes: \* Number of first births per 1,000 females 15-19 years old who have not had a birth; \*\* Number of repeat births per 1,000 females 15-19 years old who have had a previous birth; See Appendix "How to compute rates of first and repeat childbearing."

**Figure 12**  
Births to Mothers 19 or Younger by Marital Status, Arizona, 1996, 2006, and 2016

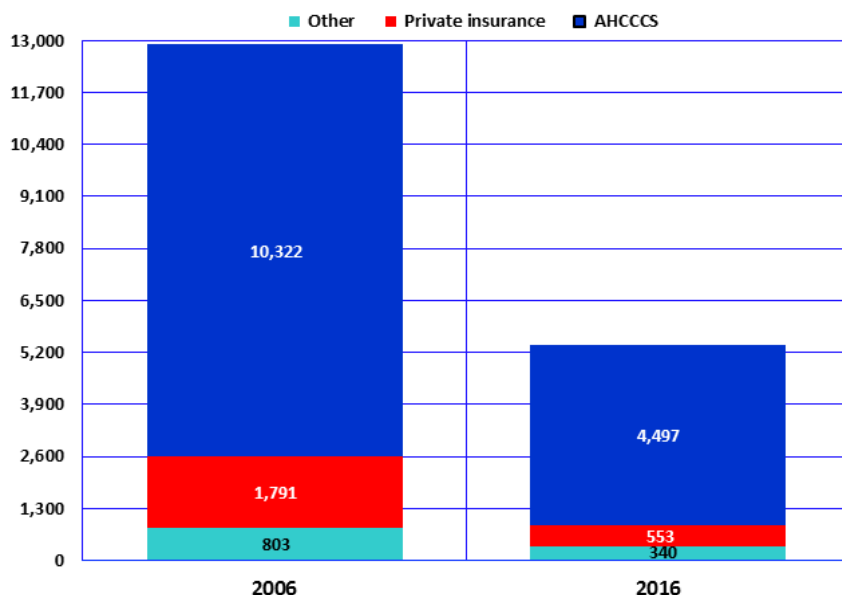


Unwed mothers have accounted for an increasing annual proportion of births throughout the 1990s and 2000s. Two decades ago, more than 7 out of 10 teenage mothers were unmarried (Figure 13). In 2016, non-marital births accounted for 89.7 percent of births to mothers 19 years or younger.



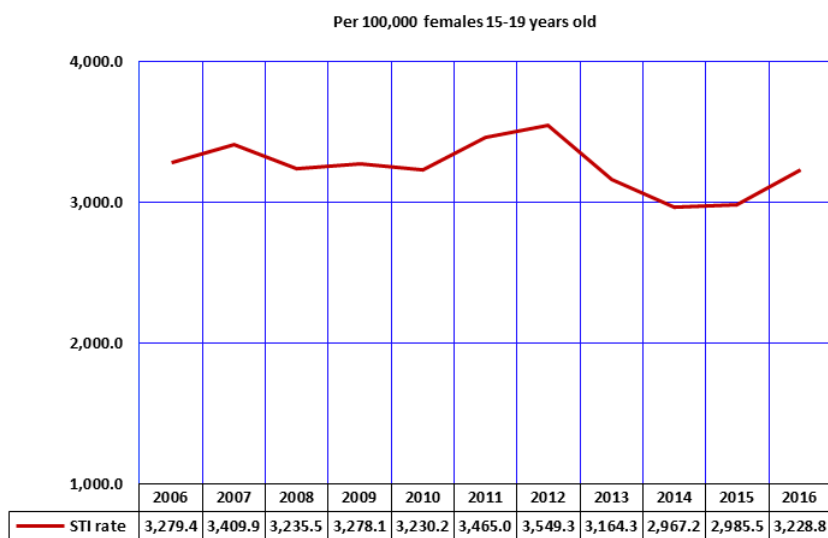
KEY FINDINGS

**Figure 13**  
**Number of Births to Mothers 19 or Younger by Payer, Arizona, 2006 and 2016**



The total number of births to mothers 19 years or younger decreased by 58.3 percent from 12,916 in 2006 to 5,390 in 2016 (Table 1). In contrast, the proportional share of births paid for by the Arizona Health Care Cost Containment System (AHCCCS, the State’s Medicaid program) increased from 79.9 percent in 2006 to 83.4 percent in 2016 (Figure 13).

**Figure 14**  
**Trends in the Incidence of Sexually Transmitted Infections\* among Females 15-19 Years, Arizona, 2006-2016**



In each year from 2007 to 2012, the total number of sexually transmitted infections (STI) among females aged 19 or younger exceeded 7,300, but fell to 6,723 in 2014, then increased to 6,872 in 2015, to 7,452 in 2016. (Table 15). Among females 15-19 years, the rate of 2016 was also higher than 2015, but 1.5 percent lower than the rate of 2006.

These STIs include *chlamydia* and *syphilis*. *Chlamydia* can cause sterility in the affected mother and eye infections and pneumonia in the newborn. *Syphilis* can cause blindness and maternal and/or infant death.

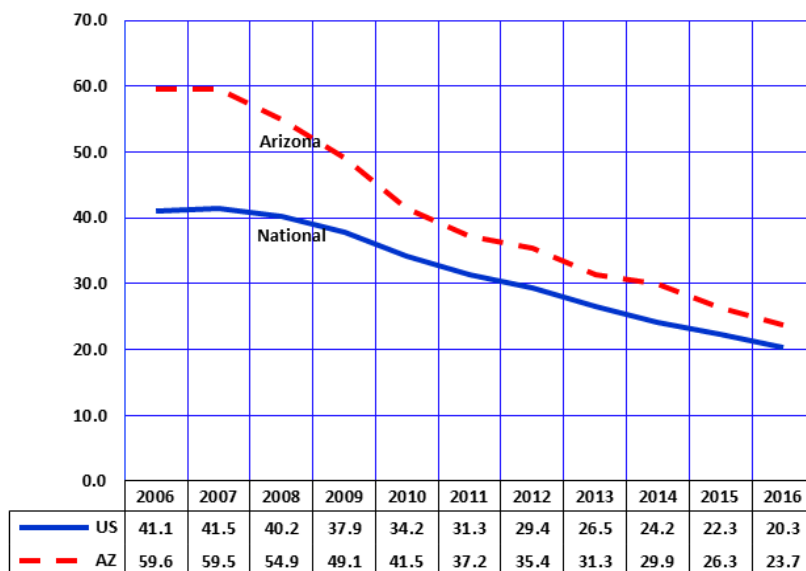
Note: \* The sum of annually reported cases of gonorrhea, chlamydia, and early syphilis.  
 Source: Bureau of Epidemiology and Disease Control Services, Office of Infectious Disease Services.

KEY FINDINGS

**Figure 15**  
**Birth Rates for Teenagers 15-19 Years, Nationally and in Arizona, 2006-2016**

In each year from 2006 to 2016, birth rates for Arizona teenagers 15-19 years old exceeded the rates of their national peers (Figure 15, Table 11).

In Arizona, Hispanic or Latino females 15-19 years old, a high-fertility group, accounted for 32.6 percent of females aged 15-19 years in 2016. A high proportional representation of Hispanic or Latino females in Arizona puts upward pressure on the overall teen birth rate.

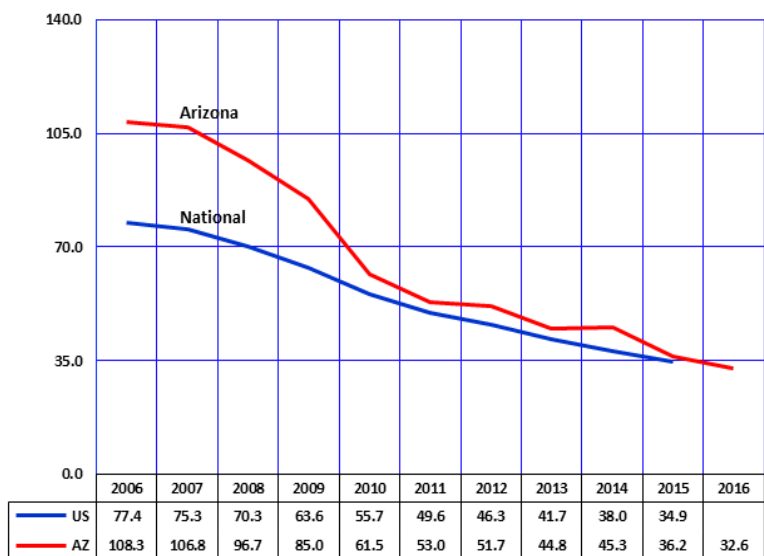


Note: The number of births per 1,000 females 15-19 years old.

**Figure 16**  
**Birth Rates for Hispanic or Latino Teenagers 15-19 Years, Nationally, and in Arizona, 2006-2016**

In 2016, Hispanics or Latino teens aged 15-19 years disproportionately accounted for 57.6 percent of births to mothers in this age group in Arizona (3,104 out of 5,390; see Table 6 and Table 7).

Historically the birth rates among Hispanic or Latino teenagers have been higher in Arizona than nationally.



Notes: The number of births per 1,000 females 15-19 years old; the U.S. birth rate for Hispanic teens 15-19 years was not available at the time of the preparation of this report.

**TEENAGE PREGNANCY, ARIZONA, 2006-2016**

# **DATA TABLES**

**TABLE 1  
PREGNANCIES AND PREGNANCY OUTCOME BY AGE GROUP AND YEAR,  
FEMALES 19 OR YOUNGER, ARIZONA, 2006-2016**

Pregnancy outcome by year	Total, females 19 years or younger	10-14 years	15-19 years old		
			Total, 15-19 years	15-17 years	18-19 years
<b>ALL PREGNANCIES</b>					
2006	14,918	242	14,676	5,105	9,571
2007	15,038	325	14,713	4,975	9,738
2008	14,047	230	13,817	4,740	9,077
2009	12,537	156	12,381	3,945	8,436
2010	10,980	150	10,830	3,363	7,467
2011	10,269	150	10,119	2,939	7,180
2012	9,710	116	9,594	2,860	6,734
2013	8,715	91	8,624	2,385	6,239
2014	7,924	68	7,856	2,125	5,731
2015	7,121	66	7,055	1,887	5,168
2016	6,724	85	6,639	1,707	4,932
<b>LIVE BIRTHS</b>					
2006	12,916	170	12,746	4,450	8,296
2007	12,972	180	12,792	4,361	8,431
2008	12,161	161	12,000	4,151	7,849
2009	10,952	132	10,820	3,501	7,319
2010	9,416	105	9,311	2,910	6,401
2011	8,435	101	8,334	2,447	5,887
2012	8,117	67	8,050	2,430	5,620
2013	7,222	71	7,151	1,985	5,166
2014	6,623	46	6,577	1,770	4,807
2015	5,884	41	5,843	1,582	4,261
2016	5,390	54	5,336	1,420	3,916
<b>ABORTIONS</b>					
2006	1,919	69	1,850	624	1,226
2007	1,979	142	1,837	576	1,261
2008	1,813	67	1,746	567	1,179
2009	1,519	24	1,495	418	1,077
2010	1,512	44	1,468	435	1,033
2011	1,785	49	1,736	478	1,258
2012	1,539	48	1,491	414	1,077
2013	1,441	20	1,421	382	1,039
2014	1,249	22	1,227	330	897
2015	1,189	25	1,164	287	877
2016	1,297	31	1,266	277	989
<b>FETAL LOSSES</b>					
2006	80 <sup>†</sup>	*	80	31	49
2007	90 <sup>†</sup>	*	84	38	46
2008	70 <sup>†</sup>	*	71	22	49
2009	66	0	66	26	40
2010	50 <sup>†</sup>	*	51	18	33
2011	49	0	49	14	35
2012	50 <sup>†</sup>	*	53	16	37
2013	52	0	52	18	34
2014	52	0	52	25	27
2015	48	0	48	18	30
2016	37	0	37	10	27

Notes: \* Cell suppressed due to non-zero count less than 6; <sup>†</sup> Sum rounded to nearest tens unit due to non-zero addend less than 6.

**TABLE 2**  
**PREGNANCY RATES<sup>a</sup> BY PREGNANCY OUTCOME, AGE GROUP, AND YEAR,**  
**FEMALES 19 OR YOUNGER, ARIZONA, 2006-2016**

Pregnancy outcome by year	Total, females 19 years or younger	10-14 years	15-19 years old		
			Total, 15-19 years	15-17 years	18-19 years
<b>ALL PREGNANCIES</b>					
2006	34.1	1.1	68.7	39.0	115.6
2007	34.4	1.5	68.4	36.9	121.4
2008	31.6	1.0	63.2	34.6	111.3
2009	28.0	0.7	56.1	28.5	102.5
2010	24.7	0.7	48.3	25.5	80.8
2011	23.0	0.7	44.8	22.1	77.2
2012	21.6	0.5	42.2	21.8	70.2
2013	19.2	0.4	37.7	18.0	64.8
2014	17.8	0.3	35.7	16.1	65.2
2015	15.9	0.3	31.8	14.1	58.4
2016	14.9	0.4	29.5	12.6	55.0
<b>LIVE BIRTHS</b>					
2006	29.6	0.8	59.6	34.0	100.2
2007	29.7	0.8	59.5	32.3	105.1
2008	27.4	0.7	54.9	30.3	96.3
2009	24.4	0.6	49.1	25.3	89.0
2010	21.2	0.5	41.5	22.1	69.2
2011	19.0	0.5	37.2	18.6	63.7
2012	18.0	0.3	35.4	18.5	58.6
2013	15.9	0.3	31.3	15.0	53.6
2014	14.9	0.2	29.9	13.4	54.7
2015	13.1	0.2	26.3	11.8	48.2
2016	12.0	0.2	23.7	10.5	43.7
<b>ABORTIONS</b>					
2006	4.4	0.3	8.7	4.8	14.8
2007	4.5	0.6	8.5	4.3	15.7
2008	4.1	0.3	8.0	4.1	14.5
2009	3.4	0.1	6.8	3.0	13.1
2010	3.4	0.2	6.5	3.3	11.2
2011	4.0	0.2	7.7	3.6	13.5
2012	3.4	0.2	6.6	3.1	11.2
2013	3.2	0.1	6.2	2.9	10.8
2014	2.8	0.1	5.6	2.5	10.2
2015	2.7	0.1	5.2	2.1	9.9
2016	2.9	0.1	5.6	2.0	11.0
<b>FETAL LOSSES</b>					
2006	0.2	**	0.4	0.2	0.6
2007	0.2	**	0.4	0.3	0.6
2008	0.2	**	0.3	0.2	0.6
2009	0.2	0.0	0.3	0.2	0.5
2010	0.1	**	0.2	0.1	0.4
2011	0.1	0.0	0.2	0.1	0.4
2012	0.1	**	0.2	0.1	0.4
2013	0.1	0.0	0.2	0.1	0.4
2014	0.1	0.0	0.2	0.2	0.3
2015	0.1	0.0	0.2	0.1	0.3
2016	0.1	0.0	0.2	0.1	0.3

Notes: \*\* Cell suppressed due to rate/ratio/percent based on non-zero count less than 6; <sup>a</sup> The number of pregnancies (live births + abortions + fetal deaths) per 1,000 females in specified age group; 0.0: Quantity more than zero but less than 0.05.

**TABLE 3  
LIVE BIRTHS TO FEMALES 19 OR YOUNGER BY AGE GROUP, RACE/ETHNICITY,  
AND YEAR, ARIZONA, 2006-2016**

Racial/ethnic group and year	Total, females 19 years or younger	10-14 years	15-19 years old		
			Total, 15-19 years	15-17 years	18-19 years
<b>WHITE NON-HISPANIC</b>					
2006	3,209	19	3,190	852	2,338
2007	3,100	26	3,074	779	2,295
2008	2,993	15	2,978	769	2,209
2009	2,715	20	2,695	649	2,046
2010	2,386	12	2,374	541	1,833
2011	2,089	13	2,076	494	1,582
2012	1,977	8	1,969	475	1,494
2013	1,781	8	1,773	365	1,408
2014	1,757	8	1,749	344	1,405
2015	1,530†	*	1,526	339	1,187
2016	1,347	8	1,339	283	1,056
<b>HISPANIC OR LATINO</b>					
2006	7,738	123	7,615	2,923	4,692
2007	7,782	115	7,667	2,892	4,775
2008	7,168	111	7,057	2,724	4,333
2009	6,341	87	6,254	2,253	4,001
2010	5,348	68	5,280	1,859	3,421
2011	4,631	61	4,570	1,467	3,103
2012	4,627	46	4,581	1,528	3,053
2013	4,080	47	4,033	1,244	2,789
2014	3,813	23	3,790	1,115	2,675
2015	3,409	28	3,381	972	2,409
2016	3,136	32	3,104	877	2,227
<b>BLACK OR AFRICAN AMERICAN</b>					
2006	601	7	594	187	407
2007	621	12	609	195	414
2008	656	12	644	203	441
2009	603	6	597	181	416
2010	562	10	552	151	401
2011	561	10	551	152	399
2012	540†	*	539	159	380
2013	507	6	501	122	379
2014	390†	*	389	102	287
2015	310†	*	311	77	234
2016	320†	*	313	81	232
<b>AMERICAN INDIAN OR ALASKA NATIVE</b>					
2006	1,216	19	1,197	430	767
2007	1,285	26	1,259	445	814
2008	1,185	22	1,163	408	755
2009	1,170	17	1,153	394	759
2010	988	14	974	331	643
2011	987	14	973	293	680
2012	890	7	883	251	632
2013	775	8	767	243	524
2014	602	9	593	196	397
2015	569	7	562	177	385
2016	540	11	529	167	362
<b>ASIAN OR PACIFIC ISLANDER</b>					
2006	90†	*	91	28	63
2007	103	0	103	31	72
2008	110†	*	112	26	86
2009	90†	*	86	18	68
2010	100†	*	102	23	79
2011	110†	*	109	26	83
2012	80†	*	78	17	61
2013	80†	*	77	11	66
2014	60†	*	56	13	43
2015	63	0	63	17	46
2016	51	0	51	12	39

Notes: \* Cell suppressed due to non-zero count less than 6; † Sum rounded to nearest tens unit due to non-zero addend less than 6.

**TABLE 4  
ABORTIONS TO FEMALES 19 OR YOUNGER BY AGE GROUP, RACE/ETHNICITY,  
AND YEAR, ARIZONA, 2006-2016**

Racial/ethnic group and year	Total, females 19 years or younger	10-14 years	15-19 years old		
			Total, 15-19 years	15-17 years	18-19 years
<b>WHITE NON-HISPANIC</b>					
2006	917	28	889	296	593
2007	982	71	911	282	629
2008	841	21	820	266	554
2009	720	11	709	207	502
2010	694	16	678	198	480
2011	289	10	279	80	199
2012	238	6	232	65	167
2013	257	6	251	66	185
2014	488	7	481	133	348
2015	488	6	482	111	371
2016	476	11	465	96	369
<b>HISPANIC OR LATINO</b>					
2006	609	24	585	193	392
2007	710	44	666	210	456
2008	561	34	527	173	354
2009	525	8	517	136	381
2010	532	16	516	151	365
2011	638	17	621	179	442
2012	441	12	429	138	291
2013	509	6	503	136	367
2014	531	7	524	134	390
2015	467	13	454	118	336
2016	564	8	556	131	425
<b>BLACK OR AFRICAN AMERICAN</b>					
2006	124	9	115	48	67
2007	136	13	123	42	81
2008	140†	*	138	43	95
2009	110†	*	107	28	79
2010	70†	*	66	24	42
2011	17	0	20†	*	13
2012	10†	*	10†	6	*
2013	20†	*	22	8	14
2014	90†	*	88	34	54
2015	90†	*	83	25	58
2016	110†	*	109	23	86
<b>AMERICAN INDIAN OR ALASKA NATIVE</b>					
2006	60†	*	54	24	30
2007	63	8	55	22	33
2008	50†	*	52	17	35
2009	52	0	52	22	30
2010	40†	*	34	13	21
2011	10†	0	10†	*	*
2012	0†	0	0†	*	*
2013	8	0	10†	*	*
2014	30†	*	20†	*	18
2015	50†	*	47	13	34
2016	40†	*	36	11	25
<b>ASIAN OR PACIFIC ISLANDER</b>					
2006	40†	*	37	11	26
2007	60†	*	59	8	51
2008	40†	*	34	12	22
2009	40†	*	39	8	31
2010	14	0	10†	*	9
2011	10†	*	0†	0	*
2012	9	0	10†	*	7
2013	0†	0	0†	*	*
2014	40†	*	34	10	24
2015	28	0	30†	*	25
2016	30†	*	30†	*	22

Notes: \* Cell suppressed due to non-zero count less than 6; † Sum rounded to nearest tens unit due to non-zero addend less than 6.

**TABLE 5  
NUMBER OF PREGNANCIES<sup>a</sup> BY PREGNANCY OUTCOME, RACE/ETHNICITY, AND YEAR AMONG FEMALES AGED 17 AND YOUNGER  
WITH RATES<sup>b</sup>, ARIZONA, 2006-2016**

Race/ethnicity Pregnancy outcome	2006	2007	2008	2009	2010	2011	2012	2013	2014	2015	2016	2016 Rates
<b>WHITE<sup>c</sup> NON-HISPANIC, total:</b>	1,204	1,165	1,074	894	770	600	564	448	496	462	401	2.6
Births	871	805	784	669	553	507	483	373	352	344	291	1.9
Abortions	324	353	287	218	214	90	71	72	140	117	107	0.7
<b>HISPANIC OR LATINO, total:</b>	3,281	3,286	3,057	2,496	2,106	1,731	1,728	1,443	1,292	1,144	1,055	6.8
Births	3,046	3,007	2,835	2,340	1,927	1,528	1,574	1,291	1,138	1,000	909	5.8
Abortions	217	254	207	144	167	196	150	142	141	131	139	0.9
<b>BLACK OR AFRICAN AMERICAN, total:</b>	255	268	266	221	189	170 <sup>†</sup>	174	140	145	106	111	5.6
Births	194	207	215	187	161	162	164	128	107	78	84	4.2
Abortions	57	55	48	31	25	*	9	9	36	27	27	1.4
<b>AMERICAN INDIAN OR ALASKA NATIVE, total:</b>	477	504	452	436	361	310 <sup>†</sup>	260 <sup>†</sup>	260 <sup>†</sup>	217	204	191	10.2
Births	449	471	430	411	345	307	258	251	205	184	178	9.5
Abortions	25	30	19	22	15	*	*	*	7	17	13	0.7
<b>ASIAN OR PACIFIC ISLANDER, total:</b>	43	43	41	30	30 <sup>†</sup>	30 <sup>†</sup>	20 <sup>†</sup>	20 <sup>†</sup>	25	20 <sup>†</sup>	20 <sup>†</sup>	1.3
Births	29	31	27	20	24	28	18	13	14	17	12	1.0
Abortions	14	12	14	9	*	*	*	*	11	*	*	**
<b>ALL RACIAL/ETHNIC GROUPS<sup>d</sup>, total:</b>	5,347	5,300	4,970	4,101	3,513	3,089	2,976	2,476	2,193	1,953	1,792	5.0
Births	4,620	4,541	4,312	3,633	3,015	2,548	2,497	2,056	1,816	1,623	1,474	4.1
Abortions	693	718	634	442	479	527	463	402	352	312	308	0.9
<b>Pregnancy rate, total:</b>	15.1	14.8	13.7	11.2	10.0	8.7	8.4	6.9	6.1	5.4	5.0	
<b>Fertility rate<sup>e</sup></b>	13.0	12.7	11.9	9.9	8.6	7.2	7.1	5.8	5.1	4.5	4.1	
<b>Abortion rate</b>	2.0	2.0	1.7	1.2	1.4	1.5	1.3	1.1	1.0	0.9	0.9	

Notes: \* Cell suppressed due to non-zero count less than 6; \*\* Cell suppressed due to rate/ratio/percent based on non-zero count less than 6; <sup>†</sup> Sum rounded to nearest tens unit due to non-zero addend less than 6; <sup>‡</sup> Fetal deaths are included in the total counts of pregnancies; <sup>b</sup> All rates per 1,000 females 10-17 years old; <sup>c</sup> Not of Hispanic origin; <sup>d</sup> Includes other and unspecified ethnicity; <sup>e</sup> Number of births per 1,000 females 10-17 years old.



**TABLE 6  
NUMBER OF PREGNANCIES<sup>a</sup> BY PREGNANCY OUTCOME, RACE/ETHNICITY, AND YEAR AMONG FEMALES 15-17 YEARS OLD  
WITH RATES<sup>b</sup>, ARIZONA, 2006-2016**

Race/ethnicity Pregnancy outcome	2006	2007	2008	2009	2010	2011	2012	2013	2014	2015	2016	2016 Rates
<b>WHITE<sup>c</sup> NON-HISPANIC, total:</b>	1,157	1,067	1,038	863	742	577	549	434	481	451	382	6.5
Births	852	779	769	649	541	494	475	365	344	339	283	4.8
Abortions	296	282	266	207	198	80	65	66	133	111	96	1.6
<b>HISPANIC OR LATINO, total:</b>	3,131	3,126	2,911	2,401	2,021	1,653	1,670	1,390	1,262	1,103	1,015	17.6
Births	2,923	2,892	2,724	2,253	1,859	1,467	1,528	1,244	1,115	972	877	15.2
Abortions	193	210	173	136	151	179	138	136	134	118	131	2.3
<b>BLACK OR AFRICAN AMERICAN, total:</b>	239	242	248	212	178	160 <sup>†</sup>	166	133	138	103	104	14.0
Births	187	195	203	181	151	152	159	122	102	77	81	10.9
Abortions	48	42	43	28	24	*	6	8	34	25	23	3.1
<b>AMERICAN INDIAN OR ALASKA NATIVE, total:</b>	457	470	428	419	345	300 <sup>†</sup>	250 <sup>†</sup>	250 <sup>†</sup>	210 <sup>†</sup>	193	178	24.8
Births	430	445	408	394	331	293	251	243	196	177	167	23.2
Abortions	24	22	17	22	13	*	*	*	*	13	11	1.5
<b>ASIAN OR PACIFIC ISLANDER, total:</b>	39	39	38	30 <sup>†</sup>	30 <sup>†</sup>	26	20 <sup>†</sup>	10 <sup>†</sup>	23	20 <sup>†</sup>	20 <sup>†</sup>	3.4
Births	28	31	26	18	23	26	17	11	13	17	12	2.7
Abortions	11	8	12	*	*	0	*	*	10	*	*	**
<b>ALL RACIAL/ETHNIC GROUPS<sup>d</sup>, total:</b>	5,105	4,975	4,740	3,945	3,363	2,939	2,860	2,385	2,125	1,887	1,707	12.6
Births	4,450	4,361	4,151	3,501	2,910	2,447	2,430	1,985	1,770	1,582	1,420	10.5
Abortions	624	576	567	418	435	478	414	382	330	287	277	2.0
<b>Pregnancy rate, total:</b>	<b>39.0</b>	<b>36.9</b>	<b>34.6</b>	<b>28.5</b>	<b>25.5</b>	<b>22.1</b>	<b>21.8</b>	<b>18.0</b>	<b>16.1</b>	<b>14.1</b>	<b>12.6</b>	
<b>Fertility rate<sup>e</sup></b>	<b>34.0</b>	<b>32.3</b>	<b>30.3</b>	<b>25.3</b>	<b>22.1</b>	<b>18.4</b>	<b>18.5</b>	<b>15.0</b>	<b>13.4</b>	<b>11.8</b>	<b>10.5</b>	
<b>Abortion rate</b>	<b>4.8</b>	<b>4.3</b>	<b>4.1</b>	<b>3.0</b>	<b>3.3</b>	<b>3.6</b>	<b>3.1</b>	<b>2.9</b>	<b>2.5</b>	<b>2.1</b>	<b>2.0</b>	

Notes: \* Cell suppressed due to non-zero count less than 6; \*\* Cell suppressed due to rate/ratio/percent based on non-zero count less than 6; <sup>†</sup> Sum rounded to nearest tens unit due to non-zero addend less than 6; <sup>‡</sup> Fetal deaths are included in the total counts of pregnancies; <sup>b</sup> All rates per 1,000 females 15-17 years old; <sup>c</sup> Not of Hispanic origin; <sup>d</sup> Includes other and unspecified ethnicity; <sup>e</sup> Number of births per 1,000 females 15-17 years old.

**TABLE 7  
NUMBER OF PREGNANCIES<sup>a</sup> BY PREGNANCY OUTCOME, RACE/ETHNICITY, AND YEAR AMONG FEMALES 18-19 YEARS OLD  
WITH RATES<sup>b</sup>, ARIZONA, 2006-2016**

Race/ethnicity Pregnancy outcome	2006	2007	2008	2009	2010	2011	2012	2013	2014	2015	2016	2016 Rates
<b>WHITE<sup>c</sup> NON-HISPANIC, total:</b>	2,944	2,936	2,778	2,560	2,316	1,792	1,675	1,602	1,759	1,562	1,433	36.4
Births	2,338	2,295	2,209	2,046	1,833	1,582	1,494	1,408	1,405	1,187	1,056	26.8
Abortions	593	629	554	502	480	199	167	185	348	371	369	9.4
<b>HISPANIC OR LATINO, total:</b>	5,115	5,259	4,707	4,400	3,812	3,566	3,357	3,175	3,078	2,764	2,668	71.5
Births	4,692	4,775	4,333	4,001	3,421	3,103	3,053	2,789	2,675	2,409	2,227	59.7
Abortions	392	456	354	381	365	442	291	367	390	336	425	11.4
<b>BLACK OR AFRICAN AMERICAN, total:</b>	476	498	546	501	446	413	390 <sup>†</sup>	397	345	294	320	63.5
Births	407	414	441	416	401	399	380	379	287	234	232	46.0
Abortions	67	81	95	79	42	13	*	14	54	58	86	17.1
<b>AMERICAN INDIAN OR ALASKA NATIVE, total:</b>	800	849	794	793	664	690 <sup>†</sup>	640 <sup>†</sup>	530 <sup>†</sup>	417	423	388	83.9
Births	767	814	755	759	643	680	632	524	397	385	362	78.3
Abortions	30	33	35	30	21	*	*	*	18	34	25	5.4
<b>ASIAN OR PACIFIC ISLANDER, total:</b>	89	124	108	99	88	90 <sup>†</sup>	68	70 <sup>†</sup>	67	72	61	19.0
Births	63	72	86	68	79	83	61	66	43	46	39	12.1
Abortions	26	51	22	31	9	*	7	*	24	25	22	6.8
<b>ALL RACIAL/ETHNIC GROUPS<sup>d</sup>, total:</b>	9,571	9,738	9,077	8,436	7,467	7,180	6,734	6,239	5,731	5,168	4,932	55.0
Births	8,296	8,431	7,849	7,319	6,401	5,887	5,620	5,166	4,807	4,261	3,916	43.7
Abortions	1,226	1,261	1,179	1,077	1,033	1,258	1,077	1,039	897	877	989	11.0
<b>Pregnancy rate, total:</b>	<b>115.6</b>	<b>121.4</b>	<b>111.3</b>	<b>102.5</b>	<b>80.8</b>	<b>77.2</b>	<b>70.2</b>	<b>64.8</b>	<b>65.2</b>	<b>58.4</b>	<b>55.0</b>	
<b>Fertility rate<sup>e</sup></b>	<b>100.2</b>	<b>105.1</b>	<b>96.3</b>	<b>89.0</b>	<b>69.2</b>	<b>63.3</b>	<b>58.6</b>	<b>53.6</b>	<b>54.7</b>	<b>48.2</b>	<b>43.7</b>	
<b>Abortion rate</b>	<b>14.8</b>	<b>15.7</b>	<b>14.5</b>	<b>13.1</b>	<b>11.2</b>	<b>13.5</b>	<b>11.2</b>	<b>10.8</b>	<b>10.2</b>	<b>9.9</b>	<b>11.0</b>	

Notes: \* Cell suppressed due to non-zero count less than 6; <sup>†</sup> Sum rounded to nearest tens unit due to non-zero addend less than 6; <sup>a</sup> Fetal deaths are included in the total counts of pregnancies; <sup>b</sup> All rates per 1,000 females 18-19 years old; <sup>c</sup> Not of Hispanic origin; <sup>d</sup> Includes other and unspecified ethnicity; <sup>e</sup> Number of births per 1,000 females 18-19 years old.

**TABLE 8  
NUMBER OF PREGNANCIES<sup>a</sup> BY PREGNANCY OUTCOME, RACE/ETHNICITY, AND YEAR AMONG FEMALES 19 AND YOUNGER,  
WITH RATES<sup>b</sup>, ARIZONA, 2006-2016**

Race/ethnicity Pregnancy outcome	2006	2007	2008	2009	2010	2011	2012	2013	2014	2015	2016	2016 Rates
<b>WHITE<sup>c</sup> NON-HISPANIC, total:</b>	4,148	4,101	3,852	3,454	3,086	2,392	2,239	2,050	2,255	2,024	1,834	9.5
Births	3,209	3,100	2,993	2,715	2,386	2,089	1,977	1,781	1,757	1,531	1,347	7.0
Abortions	917	982	841	720	694	289	238	257	488	488	476	2.5
<b>HISPANIC OR LATINO, total:</b>	8,396	8,545	7,764	6,896	5,918	5,297	5,085	4,618	4,370	3,908	3,723	19.3
Births	7,738	7,782	7,168	6,341	5,348	4,631	4,627	4,080	3,813	3,409	3,136	16.2
Abortions	609	710	561	525	532	638	441	509	531	467	564	2.9
<b>BLACK OR AFRICAN AMERICAN, total:</b>	731	766	812	722	635	580	562	537	490	400	431	17.3
Births	601	621	656	603	562	561	544	507	394	312	316	12.7
Abortions	124	136	143	110	67	17	14	23	90	85	113	4.5
<b>AMERICAN INDIAN OR ALASKA NATIVE, total:</b>	1,277	1,353	1,246	1,229	1,025	1,000 <sup>†</sup>	900 <sup>†</sup>	787	634	627	579	24.7
Births	1,216	1,285	1,185	1,170	988	987	890	775	602	569	540	23.1
Abortions	55	63	54	52	36	*	*	8	25	51	38	1.6
<b>ASIAN OR PACIFIC ISLANDER, total:</b>	132	167	149	129	117	120 <sup>†</sup>	88	80 <sup>†</sup>	92	92	77	5.0
Births	92	103	113	88	103	111	79	79	57	63	51	3.3
Abortions	40	63	36	40	14	*	9	*	35	28	26	1.7
<b>ALL RACIAL/ETHNIC GROUPS<sup>d</sup>, total:</b>	14,918	15,038	14,047	12,537	10,980	10,269	9,710	8,715	7,924	7,121	6,724	14.9
Births	12,916	12,972	12,161	10,952	9,416	8,435	8,117	7,222	6,623	5,884	5,390	12.0
Abortions	1,919	1,979	1,813	1,519	1,512	1,785	1,539	1,441	1,249	1,189	1,297	2.9
<b>Pregnancy rate, total:</b>	<b>34.1</b>	<b>34.4</b>	<b>31.6</b>	<b>28.0</b>	<b>24.7</b>	<b>23.0</b>	<b>21.6</b>	<b>19.2</b>	<b>17.8</b>	<b>15.9</b>	<b>14.9</b>	
<b>Fertility rate<sup>e</sup></b>	<b>29.6</b>	<b>29.7</b>	<b>27.4</b>	<b>24.4</b>	<b>21.2</b>	<b>18.9</b>	<b>18.0</b>	<b>15.9</b>	<b>14.9</b>	<b>13.1</b>	<b>12.0</b>	
<b>Abortion rate</b>	<b>4.4</b>	<b>4.5</b>	<b>4.1</b>	<b>3.4</b>	<b>3.4</b>	<b>4.0</b>	<b>3.4</b>	<b>3.2</b>	<b>2.8</b>	<b>2.7</b>	<b>2.9</b>	

Notes: \* Cell suppressed due to non-zero count less than 6; <sup>†</sup> Sum rounded to nearest tens unit due to non-zero addend less than 6; <sup>a</sup> Fetal deaths are included in the total counts of pregnancies; <sup>b</sup> All rates per 1,000 females 19 or younger; <sup>c</sup> Not of Hispanic origin; <sup>d</sup> Includes other and unspecified ethnicity; <sup>e</sup> Number of births per 1,000 females 19 or younger.

**TABLE 9  
TRENDS IN PREGNANCY RATES<sup>a</sup> BY COUNTY OF RESIDENCE AMONG FEMALES 10-17 AND 18-19 YEARS OLD,  
ARIZONA, 2006-2016**

	ARIZONA	APACHE	COCHISE	COCONINO	GILA	GRAHAM	GREENLEE	LA PAZ	MARICOPA	MOHAVE	NAVAJO	PIMA	PINAL	SANTA CRUZ	YAVAPAI	YUMA	
<b>19 Years or Younger</b>	2006	34.1	25.6	24.2	31.0	37.7	35.5	24.7	30.0	35.4	33.0	30.0	32.9	34.1	32.9	29.6	38.0
	2007	34.4	27.5	29.1	33.2	41.7	40.1	25.4	50.9	35.4	31.9	33.7	30.5	37.4	32.2	33.0	37.8
	2008	31.6	25.3	27.2	28.6	45.9	33.2	33.2	38.6	32.5	28.1	36.3	29.0	31.3	31.5	26.9	35.1
	2009	28.0	27.7	28.7	27.6	40.8	33.7	41.2	27.8	27.4	25.9	33.2	27.0	27.6	29.1	25.0	36.1
	2010	24.7	26.7	27.5	22.5	39.7	33.3	35.7	38.1	23.7	24.6	32.8	24.7	22.8	30.5	21.4	34.1
	2011	23.0	23.6	24.7	20.3	35.9	28.5	34.1	31.9	22.4	18.9	33.4	22.6	21.7	27.9	19.9	30.1
	2012	21.6	21.6	24.0	18.0	29.9	29.2	18.9	25.3	20.7	19.2	29.8	21.4	20.6	29.0	18.7	29.0
2013	19.2	19.1	18.9	16.2	32.0	26.7	28.8	37.6	18.4	15.8	23.3	19.2	16.4	20.6	16.7	25.1	
2014	17.8	17.7	18.4	14.7	29.0	27.1	26.8	33.4	17.4	17.5	21.8	16.9	15.5	20.0	17.2	19.7	
2015	15.9	13.7	20.0	14.4	25.6	23.7	20.5	22.9	15.3	14.7	21.4	15.0	15.1	13.6	16.4	18.2	
2016	14.9	17.2	18.8	13.0	31.3	18.2	21.5	20.7	14.4	13.5	19.3	14.2	12.9	18.1	13.5	17.5	
<b>18-19 Years</b>	2006	115.6	87.9	71.1	84.0	139.8	95.6	69.0	63.0	125.0	142.1	99.4	95.8	129.3	108.5	109.2	122.8
	2007	121.4	89.4	99.8	81.2	164.0	103.4	122.4	242.8	131.9	157.6	125.8	89.6	144.9	102.8	129.9	129.8
	2008	111.3	89.5	92.4	72.2	165.9	94.7	133.3	156.1	120.0	135.7	135.7	86.5	121.8	111.6	100.1	121.7
	2009	102.5	100.2	102.7	68.9	160.2	93.2	203.9	127.2	106.0	129.2	132.3	82.3	108.4	115.7	101.3	119.9
	2010	80.8	96.6	90.6	40.2	137.9	96.0	122.4	177.8	80.3	96.5	122.7	68.7	96.8	94.2	84.5	114.7
	2011	77.2	94.2	78.9	36.2	132.6	81.7	163.3	127.8	78.4	75.9	121.1	64.3	94.7	104.2	71.3	109.3
	2012	70.2	79.6	80.2	33.4	105.8	95.2	64.7	87.7	69.3	69.6	115.7	61.9	82.2	97.9	64.6	90.1
2013	64.8	68.5	65.2	30.8	133.0	103.2	108.8	146.1	64.2	59.4	92.9	54.6	67.7	92.4	62.2	83.0	
2014	65.2	66.4	66.7	25.8	114.8	108.7	142.9	126.4	68.3	79.5	81.0	48.7	70.8	66.9	75.5	72.0	
2015	58.4	43.9	77.0	25.9	105.7	95.0	86.2	77.3	59.5	67.9	78.9	45.9	71.4	50.9	64.5	69.9	
2016	55.0	68.1	73.0	21.3	114.2	70.6	84.5	94.9	56.4	63.2	70.2	43.5	58.9	69.3	55.1	63.1	
<b>10-17 Years</b>	2006	15.1	10.8	12.0	14.1	16.6	17.6	**	13.1	15.7	12.4	14.9	14.7	13.4	16.5	11.8	16.6
	2007	14.8	12.5	12.0	16.3	16.2	19.3	**	15.8	15.3	10.7	14.4	13.6	16.4	17.7	12.8	16.0
	2008	13.7	9.7	11.3	13.2	21.0	12.9	16.2	17.0	14.3	9.5	15.5	12.5	13.6	15.0	10.9	14.6
	2009	11.2	10.1	10.8	13.0	15.9	14.2	13.3	9.5	11.0	8.1	12.5	11.2	11.8	11.4	8.4	16.1
	2010	10.0	11.0	10.8	11.5	18.1	11.9	19.3	**	9.5	8.1	12.5	10.3	8.6	17.1	6.6	14.9
	2011	8.7	7.8	10.4	10.6	14.6	10.3	**	10.1	8.4	5.8	13.6	9.0	7.7	11.9	7.8	11.2
	2012	8.4	7.7	9.2	8.3	11.7	12.2	**	8.9	8.1	6.3	10.4	8.0	7.2	15.0	7.4	12.6
2013	6.9	8.1	6.9	7.3	10.7	10.0	10.8	12.8	6.6	4.4	7.1	7.4	5.3	7.7	5.4	10.1	
2014	6.1	6.0	6.4	7.1	9.9	9.5	**	11.6	5.9	4.8	8.8	6.6	5.1	9.1	4.3	6.7	
2015	5.4	6.8	6.3	6.2	9.5	8.1	**	10.3	5.2	3.9	9.7	5.2	4.7	5.2	5.3	5.7	
2016	5.0	6.5	6.3	6.9	13.7	6.4	**	**	4.6	3.4	8.8	4.8	4.3	6.9	3.8	6.7	

Notes: \*\* Cell suppressed due to rate/ratio/percent based on count less than 6; <sup>a</sup> Number of pregnancies per 1,000 females in specified group.

**TABLE 10  
LIVE BIRTHS TO FEMALES 19 OR YOUNGER AS A PERCENTAGE OF TOTAL LIVE BIRTHS BY AREA, RACE/ETHNICITY,  
AND YEAR, ARIZONA, 2006-2016**

Group	2006	2007	2008	2009	2010	2011	2012	2013	2014	2015	2016
<b>ARIZONA, TOTAL<sup>a</sup></b>											
# Births (all ages)	102,042	102,687	99,215	92,616	87,053	85,190	85,725	84,963	86,648	85,024	84,404
# Births to teenagers	12,916	12,972	12,161	10,952	9,416	8,535	8,117	7,222	6,623	5,884	5,390
% Births to teenagers	12.7	12.6	12.2	11.8	10.8	10.0	9.5	8.5	7.6	6.9	6.4
<b>URBAN COUNTIES<sup>b</sup></b>											
# Births (all ages)	87,910	88,266	85,263	79,046	74,624	74,040	74,128	73,493	74,677	73,547	72,899
# Births to teenagers	10,809	10,693	10,013	8,867	7,690	6,886	6,697	6,011	5,447	4,856	4,412
% Births to teenagers	12.3	12.1	11.7	11.2	10.3	9.3	9.0	8.2	7.3	6.6	6.1
<b>RURAL COUNTIES</b>											
# Births (all ages)	14,083	14,413	13,952	13,570	12,429	12,150	11,597	11,470	11,955	11,467	11,502
# Births to teenagers	2,100	2,279	2,148	2,085	1,726	1,549	1,420	1,211	1,175	1,028	978
% Births to teenagers	14.9	15.8	15.3	15.4	13.9	12.7	12.2	10.6	9.8	9.0	8.5
<b>WHITE NON-HISPANIC</b>											
# Births (all ages)	43,013	42,216	41,925	39,781	38,777	38,294	38,670	38,220	40,097	38,180	37,762
# Births to teenagers	3,209	3,100	2,993	2,715	2,386	2,089	1,977	1,781	1,757	1,531	1,347
% Births to teenagers	7.5	7.3	7.1	6.8	6.2	5.5	5.1	4.7	4.4	4.0	3.6
<b>HISPANIC OR LATINO</b>											
# Births (all ages)	44,862	45,731	42,639	38,362	34,333	32,398	33,146	33,075	33,715	34,264	33,874
# Births to teenagers	7,738	7,782	7,168	6,341	5,348	4,631	4,627	4,080	3,813	3,409	3,136
% Births to teenagers	17.2	17.0	16.8	16.5	15.6	14.3	14.0	12.3	11.3	9.9	9.3
<b>BLACK OR AFRICAN AMERICAN</b>											
# Births (all ages)	3,864	4,165	4,301	4,378	4,328	4,366	4,715	4,726	4,522	4,361	4,388
# Births to teenagers	601	621	656	603	562	561	544	507	394	312	316
% Births to teenagers	15.6	14.9	15.2	13.8	13.0	12.8	11.5	8.7	8.7	7.2	7.2
<b>AMERICAN INDIAN OR ALASKA NATIVE</b>											
# Births (all ages)	6,364	6,408	6,362	6,170	5,815	5,830	5,569	5,476	5,145	4,984	5,030
# Births to teenagers	1,216	1,285	1,185	1,170	988	987	890	775	602	569	540
% Births to teenagers	19.1	20.0	18.6	19.0	17.0	16.9	16.0	14.2	11.7	11.4	10.7
<b>ASIAN OR PACIFIC ISLANDER</b>											
# Births (all ages)	3,136	3,412	3,425	3,396	3,293	3,505	3,625	3,466	3,169	3,235	3,350
# Births to teenagers	92	103	113	88	103	111	79	79	57	63	51
% Births to teenagers	2.9	3.0	3.2	2.6	3.1	3.2	2.2	2.3	1.8	1.9	1.5

Notes: <sup>a</sup> Includes records for ethnic groups other than White Non-Hispanic, Hispanic or Latino, Black or African American, American Indian or Alaska Native, or Asian or Pacific Islander; <sup>b</sup> Urban = Maricopa, Pima, Pinal, and Yuma. The remaining counties comprise Arizona's rural areas.

**TABLE 11  
BIRTH RATES BY AGE GROUP FOR FEMALES 19 OR YOUNGER,  
ARIZONA, AND UNITED STATES, 2006-2016**

Year	10-14 years		15 - 19 years old					
			Total		15-17 years		18-19 years	
	AZ	U.S.	AZ	U.S.	AZ	U.S.	AZ	U.S.
2006	0.8	0.6	59.6	41.1	34.0	21.6	100.2	71.2
2007	0.8	0.6	59.5	41.5	32.3	21.7	105.1	71.7
2008	0.7	0.6	54.9	40.2	30.3	21.1	96.3	68.2
2009	0.6	0.5	49.1	37.9	25.3	19.6	89.0	64.0
2010	0.5	0.4	41.5	34.2	22.1	17.3	69.2	58.2
2011	0.5	0.4	37.2	31.3	18.6	15.4	63.7	54.1
2012	0.3	0.4	35.4	29.4	18.5	14.1	58.6	51.4
2013	0.3	0.3	31.3	26.5	15.0	12.3	53.6	47.1
2014	0.2	0.3	29.9	24.2	13.4	10.9	54.7	43.8
2015	0.2	0.2	26.3	22.3	11.8	9.9	48.2	40.7
2016	0.2	0.2	23.7	20.3	10.5	8.8	43.7	37.5

Note: The U.S. data is from the National Vital Statistics reports published by the National Center for Health Statistics.

**TABLE 12  
REPEAT PREGNANCIES AMONG TEENAGE MOTHERS GIVING BIRTH BY AGE AND YEAR, ARIZONA, 2006-2016**

Mother's age	Pregnancies	Year										
		2006	2007	2008	2009	2010	2011	2012	2013	2014	2015	2016
15	Total	593	604	570	446	339	249	293	220†	184	193	170†
	Previous pregnancies	558	553	553	428	317	239	283	217	173	193	163
	None	35	51	17	18	22	10	8	*	10	0	*
16	Unknown	0	0	0	0	0	0	*	*	*	0	0
	Total	1,448	1,360	1,250	1,107	937	792	774	609	531	472	426
	Previous pregnancies	1,290	1,199	1,146	988	848	743	732	571	511	441	403
17	None	158	161	104	119	89	49	42	38	20	31	22
	One or more	0	0	0	0	0	0	0	0	0	0	*
	Unknown	0	0	0	0	0	0	0	0	0	0	0
18	Total	2,409	2,397	2,331	1,948	1,634	1,406	1,363	1,153	1,055	917	827
	Previous pregnancies	1,905	1,895	1,983	1,598	1,343	1,197	1,218	1,022	938	835	750
	None	502	502	348	350	291	209	145	129	116	82	77
19	One or more	*	0	0	0	0	0	0	*	*	0	0
	Total	3,523	3,661	3,376	3,078	2,647	2,399	2,281	2,012	1,886	1,620	1,537
	Previous pregnancies	2,519	2,645	2,576	2,226	1,967	1,901	1,845	1,658	1,545	1,365	1,276
20	None	1,004	1,016	799	851	680	498	434	351	341	255	260
	One or more	0	0	*	*	0	0	*	*	0	0	*
	Unknown	0	0	0	0	0	0	0	0	0	0	0
21	Total	4,773	4,770	4,473	4,241	3,754	3,488	3,339	3,154	2,921	2,641	2,379
	Previous pregnancies	2,961	2,980	3,065	2,667	2,459	2,414	2,444	2,376	2,233	2,017	1,873
	None	1,812	1,790	1,407	1,570	1,295	1,074	892	777	687	622	506
22	One or more	0	0	*	*	0	0	*	*	*	*	0
	Total	0	0	0	0	0	0	0	0	0	0	0
	Unknown	0	0	0	0	0	0	0	0	0	0	0

Notes: \* Cell suppressed due to non-zero count less than 6; † Sum rounded to nearest tens unit due to non-zero addend less than 6.

**TABLE 13  
CUMULATIVE NUMBER OF MOTHERS WHO WERE 19 OR YOUNGER IN ARIZONA IN 2016**

Year Baby Was Born	MOTHER'S AGE WHEN BABY WAS BORN										Mother was 19 or younger in 2016	
	10	11	12	13	14	15	16	17	18	19		
2007	0											0†
2008	0	*										0†
2009	0	0	*									0†
2010	0	*	*	11								10†
2011	0	0	*	7	93							100†
2012	0	0	*	*	61	293						360†
2013	0	0	*	15	55	223	609					900†
2014	0	0	0	6	40	184	531	1,055				1,816
2015	0	0	0	*	38	193	472	917	1,620			3,240†
2016	0	0	*	9	44	167	426	827	1,537	2,379		5,390†
<b>Cumulative number of mothers 19 or younger</b>	<b>0</b>	<b>0†</b>	<b>10†</b>	<b>50†</b>	<b>331</b>	<b>1,060</b>	<b>2,038</b>	<b>2,799</b>	<b>3,157</b>	<b>2,379</b>		<b>11,830†</b>

Notes: \* Cell suppressed due to non-zero count less than 6; † Sum rounded to nearest tens unit due to non-zero addend less than 6; The above table focuses on the 2016 cohort of Arizona mothers who were 19 or younger that year. Among them are those who gave birth in 2016 and those who gave birth prior to 2016 and were still 19 or less years old in 2016. The numbers below the main diagonal (and below the stair-like line) represent the number of mothers meeting either one of the above criteria. The last column to the right gives the cumulative total for 2016 by the year the baby was born. For example, from among those girls and adolescents who had their baby in 2010, about 10 remained in their teens in 2016. The bottom row gives the cumulative total by mother's age when the baby was born. For example, among the 11,828 mothers under 20 in Arizona in 2016, around 10 had given birth when 13 years old. Excluded from the cumulative totals and not shown above the main diagonal (and above stair-like line) are the number of mothers who were 19 years old or younger when the baby was born, but who were no longer under the age 20 by 2016. For example, mothers who were 11 years old in 2007 were 20 years old in 2016. The figures in Table 13 are unadjusted for in-and-out migration, as well as mortality of mothers, in the period of 2007-2016. For simplicity, the number of mothers equals the number of babies (i.e., no adjustment was made for multiple birth events).



**TABLE 14  
TRENDS IN TEEN PREGNANCY RATES BY RACE/ETHNICITY AND AGE GROUP,  
ARIZONA, 2006-2016**

	<b>Total, females 19 years or younger</b>	<b>10-14 years</b>	<b>15-19 years</b>	<b>15-17 years</b>	<b>18-19 years</b>
<b>WHITE NON-HISPANIC</b>					
<b>2006</b>	18.9	0.4	37.2	17.2	68.6
<b>2007</b>	19.0	0.9	36.3	15.6	70.3
<b>2008</b>	17.5	0.3	34.1	14.9	65.3
<b>2009</b>	15.6	0.3	30.3	12.3	59.6
<b>2010</b>	15.9	0.3	30.5	12.9	53.9
<b>2011</b>	11.8	0.2	22.8	9.6	40.8
<b>2012</b>	10.7	0.1	20.6	9.0	35.6
<b>2013</b>	9.8	0.1	18.9	7.1	34.0
<b>2014</b>	11.6	0.2	23.0	8.2	45.5
<b>2015</b>	10.5	**	20.6	7.7	40.2
<b>2016</b>	9.5	0.2	18.5	6.5	36.4
<b>HISPANIC OR LATINO</b>					
<b>2006</b>	56.0	1.9	117.3	72.7	188.1
<b>2007</b>	55.3	1.9	116.8	68.5	201.2
<b>2008</b>	49.4	1.7	104.4	62.7	177.2
<b>2009</b>	43.5	1.1	92.4	51.3	164.2
<b>2010</b>	33.8	0.9	67.9	38.9	112.6
<b>2011</b>	30.2	0.9	60.5	31.8	104.0
<b>2012</b>	28.0	0.6	56.7	31.6	93.8
<b>2013</b>	25.0	0.6	50.7	25.9	87.4
<b>2014</b>	25.4	0.3	51.9	25.2	91.7
<b>2015</b>	20.4	0.4	41.4	19.5	74.7
<b>2016</b>	19.3	0.4	38.7	17.6	71.5
<b>BLACK OR AFRICAN AMERICAN</b>					
<b>2006</b>	32.6	1.4	67.2	36.1	118.1
<b>2007</b>	36.1	2.3	73.9	36.9	144.1
<b>2008</b>	37.7	1.6	78.1	37.2	155.7
<b>2009</b>	33.3	0.8	69.5	31.6	141.7
<b>2010</b>	29.5	1.1	56.1	27.3	97.0
<b>2011</b>	24.9	0.9	47.7	22.3	84.0
<b>2012</b>	26.2	**	49.8	26.2	81.2
<b>2013</b>	25.1	0.7	47.5	20.9	82.9
<b>2014</b>	16.9	**	33.3	15.9	59.4
<b>2015</b>	16.6	**	32.6	14.2	59.8
<b>2016</b>	17.3	**	34.0	14.0	63.5
<b>AMERICAN INDIAN OR ALASKA NATIVE</b>					
<b>2006</b>	36.2	1.1	71.1	41.5	119.8
<b>2007</b>	39.1	2.0	73.8	42.4	124.9
<b>2008</b>	35.5	1.4	67.4	38.1	115.2
<b>2009</b>	34.7	1.0	66.2	36.9	114.0
<b>2010</b>	37.0	1.2	69.5	40.5	111.0
<b>2011</b>	29.2	0.8	55.7	28.8	94.2
<b>2012</b>	33.6	0.5	65.5	32.2	110.7
<b>2013</b>	29.7	0.6	58.6	31.5	98.0
<b>2014</b>	19.2	0.7	37.8	21.0	62.7
<b>2015</b>	26.8	0.9	52.5	27.3	90.8
<b>2016</b>	24.7	1.1	47.9	24.8	83.9
<b>ASIAN OR PACIFIC ISLANDER</b>					
<b>2006</b>	12.9	**	25.7	13.0	45.0
<b>2007</b>	15.3	0.0	31.1	12.0	62.2
<b>2008</b>	13.5	**	27.6	11.6	53.5
<b>2009</b>	11.6	**	23.6	8.2	48.7
<b>2010</b>	9.9	**	19.9	8.3	35.5
<b>2011</b>	9.1	**	18.0	7.2	32.7
<b>2012</b>	7.5	**	14.6	5.6	26.6
<b>2013</b>	6.8	**	13.2	3.7	25.5
<b>2014</b>	5.5	**	10.9	4.6	20.3
<b>2015</b>	6.3	0.0	12.8	4.8	23.8
<b>2016</b>	5.0	0.0	10.0	3.4	19.0

Note: \*\* Cell suppressed due to rate/ratio/percent based on non-zero count less than 6.

**TABLE 15  
TRENDS IN SEXUALLY TRANSMITTED INFECTIONS BY AGE GROUP AND YEAR AMONG FEMALES 10-19 YEARS,  
ARIZONA, 2006-2016**

	2006	2007	2008	2009	2010	2011	2012	2013	2014	2015	2016
<b>10-14 years</b>											
<b>Diagnosed with:</b>											
<b>Gonorrhea</b>	40	32	19	26	22	27	21	21	16	30	38
<b>Chlamydia</b>	224	278	249	224	223	208	197	135	143	131	166
<b>Early syphilis</b>	0	*	*	0	0	0	0	0	0	0	0
<b>Total reported infections</b>	264	310 <sup>†</sup>	270 <sup>†</sup>	250	245	235	218	156	159	161	204
<b>15-19 years</b>											
<b>Diagnosed with:</b>											
<b>Gonorrhea</b>	804	709	468	453	529	691	813	702	679	751	856
<b>Chlamydia</b>	6,188	6,600	6,595	6,771	6,666	7,073	6,882	6,213	5,876	5,952	6,385
<b>Early syphilis</b>	16	25	8	6	10	8	6	6	9	8	7
<b>Total reported infections</b>	7,008	7,334	7,071	7,230	7,205	7,772	7,701	6,921	6,564	6,711	7,248

Notes: \* Cell suppressed due to non-zero count less than 6; † Sum rounded to nearest tens unit due to non-zero addend less than 6; Information about the number of reported cases of gonorrhea, chlamydia, and early syphilis was provided by STD Program in the Office of Infectious Diseases (see Table 3B-3 in the Arizona Health Status and Vital Statistics annual reports).

**TABLE 16  
TRENDS IN THE INCIDENCE RATES<sup>a</sup> OF SEXUALLY TRANSMITTED INFECTIONS BY AGE GROUP AND YEAR AMONG  
FEMALES 10-19 YEARS, ARIZONA, 2006-2016**

	2006	2007	2008	2009	2010	2011	2012	2013	2014	2015	2016
<b>10-14 years</b>											
<b>Diagnosed with:</b>											
<b>Gonorrhea</b>	17.9	14.4	8.4	11.4	10.0	12.3	9.4	9.4	7.1	13.3	16.9
<b>Chlamydia</b>	100.3	125.1	110.3	98.3	101.5	94.7	88.5	60.4	63.7	58.3	73.9
<b>Early syphilis</b>	0.0	**	**	0.0	0.0	0.0	0.0	0.0	0.0	0.0	0.0
<b>Total reported infections</b>	118.2	140.0	119.1	109.7	111.5	107.0	97.9	69.8	70.8	71.6	90.8
<b>15-19 years</b>											
<b>Diagnosed with:</b>											
<b>Gonorrhea</b>	376.2	329.6	214.1	205.4	253.8	308.1	374.7	321.0	306.9	334.1	380.8
<b>Chlamydia</b>	2,895.7	3,068.6	3,017.7	3,070.0	2,971.9	3,153.3	3,171.8	2,840.6	2,656.2	2,647.8	2,840.4
<b>Early syphilis</b>	7.5	11.6	3.7	2.7	4.5	3.6	2.8	2.7	4.1	3.6	7.6
<b>Total reported infections</b>	3,279.4	3,409.9	3,235.5	3,278.1	3,230.2	3,465.0	3,549.3	3,164.3	2,967.2	2,985.5	3,228.8

Notes: \*\* Cell suppressed due to rate/ratio/percent based on non-zero count less than 6; <sup>a</sup> Number of cases per 100,000 females in specified age group.

**TABLE 17  
PREGNANCIES AND PREGNANCY RATES OF FEMALES 19 OR YOUNGER  
BY COUNTY OF RESIDENCE, ARIZONA, 2016**

County of residence	NUMBER OF PREGNANCIES <sup>a</sup>				
	Total, females 19 years or younger	10-14 years	15-19 years old		
			Total, 15-19 years	15-17 years	18-19 years
Apache	100†	*	97	28	69
Cochise	140†	*	139	37	102
Coconino	150†	*	147	44	103
Gila	90†	*	88	30	58
Graham	50†	*	50	13	37
Greenlee	17	0	20†	*	12
La Paz	19	0	20†	*	15
Maricopa	4,021	48	3,973	996	2,977
Mohave	140†	*	140	28	112
Navajo	155	0	155	59	96
Pima	901	11	890	223	667
Pinal	337	6	331	88	243
Santa Cruz	70†	*	73	22	51
Yavapai	150†	*	142	30	112
Yuma	260†	*	260	79	181
<b>TOTAL STATE</b>	<b>6,724</b>	<b>90†</b>	<b>6,639</b>	<b>1,710†</b>	<b>4,932</b>

County of residence	PREGNANCY RATES <sup>b</sup>				
	Total, females 19 years or younger	10-14 years	15-19 years old		
			Total 15-19 years	15-17 years	18-19 years
Apache	17.2	**	34.2	15.3	68.1
Cochise	18.8	**	37.9	16.3	73.0
Coconino	13.0	**	20.1	17.7	21.3
Gila	31.3	**	62.9	33.7	114.2
Graham	18.2	**	35.0	14.4	70.6
Greenlee	21.5	0.0	43.0	**	84.5
La Paz	20.7	0.0	42.9	**	94.9
Maricopa	14.4	0.3	28.8	11.7	56.4
Mohave	13.5	**	26.9	8.1	63.2
Navajo	19.3	0.0	40.0	23.5	70.2
Pima	14.2	0.4	26.5	12.2	43.5
Pinal	12.9	0.4	27.1	10.9	58.9
Santa Cruz	18.1	**	36.6	17.5	69.3
Yavapai	13.5	**	26.4	9.0	55.1
Yuma	17.5	**	35.3	17.6	63.1
<b>TOTAL STATE</b>	<b>14.9</b>	<b>0.4</b>	<b>29.5</b>	<b>12.6</b>	<b>55.0</b>

Notes: \* Cell suppressed due to non-zero count less than 6; \*\* Cell suppressed due to rate/ratio/percent based on non-zero count less than 6; † Sum rounded to nearest tens unit due to non-zero addend less than 6; <sup>a</sup> The sum of live births, fetal deaths and abortions; <sup>b</sup> The number of pregnancies per 1,000 females in specified group.

**TABLE 18**  
**BIRTHS AND BIRTH RATES, FEMALES 19 OR YOUNGER BY COUNTY OF RESIDENCE,**  
**ARIZONA, 2016**

County of residence	NUMBER OF BIRTHS				
	Total, females 19 years or younger	10-14 years	15-19 years old		
			Total 15-19 years	15-17 years	18-19 years
Apache	100†	*	96	28	68
Cochise	125	0	125	30	95
Coconino	120†	*	118	37	81
Gila	80†	*	74	30	44
Graham	50†	*	46	11	35
Greenlee	15	0	20†	*	11
La Paz	19	0	20†	*	15
Maricopa	3,150	29	3,121	819	2,302
Mohave	140†	*	135	26	109
Navajo	149	0	149	55	94
Pima	723	6	717	181	536
Pinal	290†	*	285	76	209
Santa Cruz	70†	*	69	20	49
Yavapai	120†	*	118	22	96
Yuma	250†	*	249	77	172
<b>TOTAL STATE</b>	<b>5,390</b>	<b>50†</b>	<b>5,336</b>	<b>1,420†</b>	<b>3,916</b>

County of residence	BIRTH RATES <sup>a</sup>				
	Total, females 19 years or younger	10-14 years	15-19 years old		
			Total 15-19 years	15-17 years	18-19 years
Apache	17.0	**	33.8	15.3	67.1
Cochise	16.8	0.0	34.1	13.2	68.0
Coconino	10.5	**	16.1	14.8	16.8
Gila	26.5	**	52.9	33.7	86.6
Graham	16.8	**	32.2	12.2	66.8
Greenlee	19.0	0.0	38.0	**	77.5
La Paz	20.7	0.0	42.9	**	94.9
Maricopa	11.3	0.2	22.6	9.6	43.6
Mohave	13.0	**	25.9	7.6	61.5
Navajo	18.5	0.0	38.4	21.9	68.7
Pima	11.4	0.2	21.3	9.9	35.0
Pinal	11.0	**	23.4	9.4	50.7
Santa Cruz	17.1	**	34.6	15.9	66.6
Yavapai	11.2	**	21.9	6.6	47.2
Yuma	16.8	**	33.8	17.1	60.0
<b>TOTAL STATE</b>	<b>12.0</b>	<b>0.2</b>	<b>23.7</b>	<b>10.5</b>	<b>43.7</b>

Notes: \* Cell suppressed due to non-zero count less than 6; \*\* Cell suppressed due to rate/ratio/percent based on non-zero count less than 6; † Sum rounded to nearest tens unit due to non-zero addend less than 6; <sup>a</sup> The number of births per 1,000 females in specified group.

**TABLE 19  
PREGNANCY RATES<sup>a</sup> AND NUMBER OF LIVE BIRTHS, FETAL DEATHS, AND  
ABORTIONS TO TEENS BY INDIVIDUAL AGE, ARIZONA, 2016**

Age	Population	PREGNANCIES BY OUTCOME			TOTAL PREGNANCIES	
		Live births	Induced terminations of pregnancy (or abortions)	Spontaneous fetal losses	Number	Rate
<b>10</b>	45,399	0	*	0	*	**
<b>11</b>	44,420	0	0	0	0	<b>0.0</b>
<b>12</b>	45,022	*	6	0	7	<b>0.2</b>
<b>13</b>	44,635	9	*	0	12	<b>0.3</b>
<b>14</b>	45,498	44	20	0	64	<b>1.4</b>
<b>10-14</b>	224,974	50 <sup>†</sup>	30 <sup>†</sup>	0	90 <sup>†</sup>	<b>0.4</b>
<b>15</b>	46,040	167	35	*	203	<b>4.4</b>
<b>16</b>	44,961	426	85	*	513	<b>11.4</b>
<b>17</b>	44,505	827	157	7	991	<b>22.3</b>
<b>15-17</b>	135,506	1,420	277	10 <sup>†</sup>	1,707	<b>12.6</b>
<b>18</b>	45,206	1,537	410	13	1,960	<b>43.4</b>
<b>19</b>	44,398	2,379	579	14	2,972	<b>66.9</b>
<b>18-19</b>	89,604	3,916	989	27	4,932	<b>55.0</b>
<b>Total 10-19</b>	450,084	5,390	1,297	37	6,724	<b>14.9</b>

Notes: \* Cell suppressed due to non-zero count less than 6; \*\* Cell suppressed due to rate/ratio/percent based on non-zero count less than 6; <sup>†</sup> Sum rounded to nearest tens unit due to non-zero addend less than 6; <sup>a</sup> Rates per 1,000 female population in specific group.

**TABLE 20  
BIRTHS TO FEMALES 19 OR YOUNGER BY AGE AND COUNTY OF RESIDENCE,  
ARIZONA, 2016**

	Total	Mother's age							
		12	13	14	15	16	17	18	19
<b>TOTAL</b>	5,390†	0†	10†	40†	170†	430†	830†	1,540†	2,379
<b>Apache</b>	100†	0	*	*	*	9	18	37	31
<b>Cochise</b>	130†	0	0	0	*	6	23	33	62
<b>Coconino</b>	120†	0	0	*	9	11	17	27	54
<b>Gila</b>	80†	0	0	*	7	8	15	23	21
<b>Graham</b>	50†	*	0	*	*	*	7	14	21
<b>Geenlee</b>	20†	0	0	0	0	*	*	*	7
<b>La Paz</b>	20†	0	0	0	*	0	*	*	12
<b>Maricopa</b>	3,150†	0	*	24	99	243	477	925	1,377
<b>Mohave</b>	140†	0	0	*	*	6	19	40	69
<b>Navajo</b>	150†	0	0	0	*	16	34	40	54
<b>Pima</b>	723	0	0	6	17	54	110	190	346
<b>Pinal</b>	290†	0	*	*	9	26	41	85	124
<b>Santa Cruz</b>	70†	0	0	*	*	11	8	19	30
<b>Yavapai</b>	120†	0	*	*	*	9	11	38	58
<b>Yuma</b>	250†	0	0	*	12	23	42	59	113

Note: \* Cell suppressed due to non-zero count less than 6; † Sum rounded to nearest tens unit due to non-zero addend less than 6.

**TABLE 21  
ABORTIONS TO FEMALES 19 OR YOUNGER BY AGE AND COUNTY OF RESIDENCE,  
ARIZONA, 2016**

	<b>Total</b>	<b>10</b>	<b>11</b>	<b>12</b>	<b>13</b>	<b>14</b>	<b>15</b>	<b>16</b>	<b>17</b>	<b>18</b>	<b>19</b>
<b>TOTAL</b>	1,300†	0†	0	10†	0†	20†	40†	90†	160†	410†	580†
<b>Apache</b>	0†	0	0	0	0	0	0	0	0	*	0
<b>Cochise</b>	10†	0	0	0	0	*	0	*	*	*	*
<b>Coconino</b>	30†	0	0	0	0	0	*	*	*	*	15
<b>Gila</b>	10†	0	0	0	0	0	0	0	0	*	10
<b>Graham</b>	0†	0	0	0	0	0	0	0	*	*	*
<b>Greenlee</b>	0†	0	0	0	0	0	0	*	0	0	0
<b>La Paz</b>	0	0	0	0	0	0	0	0	0	0	0
<b>Maricopa</b>	850†	*	0	*	*	14	24	48	102	273	388
<b>Mohave</b>	0†	0	0	0	0	0	0	0	0	*	*
<b>Navajo</b>	10†	0	0	0	0	0	0	*	*	0	*
<b>Pima</b>	170†	*	0	*	0	0	*	15	20	50	77
<b>Pinal</b>	50†	0	0	0	0	*	0	*	8	11	22
<b>Santa Cruz</b>	0†	0	0	0	0	0	0	*	*	*	*
<b>Yavapai</b>	20†	0	0	0	0	*	*	*	*	7	8
<b>Yuma</b>	10†	0	0	0	0	0	*	*	0	*	7
<b>Unknown</b>	120†	0	0	0	*	*	*	*	14	53	44

Notes: \* Cell suppressed due to non-zero count less than 6; † Sum rounded to nearest tens unit due to non-zero addend less than 6.



**TABLE 22  
SOURCES OF PAYMENT FOR LABOR AND DELIVERY, FEMALES 19 OR YOUNGER  
BY AGE AND COUNTY OF RESIDENCE, ARIZONA, 2016**

	<b>Total</b>	<b>AHCCCS</b>	<b>IHS</b>	<b>Private insurance</b>	<b>Self-pay</b>	<b>Unknown</b>
<b>TOTAL</b>	5,390	4,497	120†	550†	200†	20†
<b>Apache</b>	100†	74	23	*	0	0
<b>Cochise</b>	125	96	0	7	21	*
<b>Coconino</b>	120†	101	6	10	*	0
<b>Gila</b>	80†	57	13	*	*	0
<b>Graham</b>	48	29	7	6	6	0
<b>Greenlee</b>	20†	6	0	*	6	0
<b>La Paz</b>	20†	15	*	*	*	0
<b>Maricopa</b>	3,150	2,748	18	287	86	11
<b>Mohave</b>	140†	114	*	16	*	*
<b>Navajo</b>	150†	126	6	14	*	*
<b>Pima</b>	723	535	26	128	34	0
<b>Pinal</b>	288	220	18	43	7	0
<b>Santa Cruz</b>	70†	62	0	*	*	*
<b>Yavapai</b>	120†	107	*	11	*	0
<b>Yuma</b>	250†	207	*	17	25	0

Notes: \* Cell suppressed due to non-zero count less than 6; † Sum rounded to nearest tens unit due to non-zero addend less than 6.

**TABLE 23**  
**SOURCES OF PAYMENT FOR LABOR AND DELIVERY, FEMALES 19 OR YOUNGER**  
**BY AGE GROUP, ARIZONA, 2016**

		Total	Mother's age group			
			<15	15-17	18-19	
<b>Total</b>	<b>Count</b>	5,390 <sup>†</sup>	50 <sup>†</sup>	1,420 <sup>†</sup>	3,916	
<b>Payer for births</b>	<b>AHCCCS</b>	<b>Count</b>	44	1,185	3,268	
		<b>Percent</b>	83.4	81.5	83.5	
	<b>IHS</b>	<b>Count</b>	120 <sup>†</sup>	*	46	73
		<b>Percent</b>	2.3	**	3.2	1.9
	<b>Private insurance</b>	<b>Count</b>	550 <sup>†</sup>	*	114	435
		<b>Percent</b>	10.3	**	8.0	11.1
	<b>Self-pay</b>	<b>Count</b>	200 <sup>†</sup>	*	70	129
		<b>Percent</b>	3.7	**	4.9	3.3
	<b>Unknown</b>	<b>Count</b>	20 <sup>†</sup>	0	*	11
		<b>Percent</b>	0.3	0.0	0.0	0.3

Notes: \* Cell suppressed due to non-zero count less than 6; \*\* Cell suppressed due to rate/ratio/percent based on non-zero count less than 6; <sup>†</sup> Sum rounded to nearest tens unit due to non-zero addend less than 6.

**TABLE 24  
TEENAGE BIRTHS BY NUMBER OF PREVIOUS PREGNANCIES BY AGE GROUP,  
ARIZONA, 2016**

		Total	Mother's age group			
			<15	15-17	18-19	
<b>Total</b>	<b>Count</b>	5,390 <sup>†</sup>	54	1,420 <sup>†</sup>	3,920 <sup>†</sup>	
<b>Total prior pregnancies</b>	<b>None</b>	<b>Count</b>	4,519	54	1,316	3,149
		<b>Percent</b>	83.8	100.0	92.7	80.4
	<b>1</b>	<b>Count</b>	742	0	93	649
		<b>Percent</b>	13.8	0.0	6.5	16.6
	<b>2</b>	<b>Count</b>	116	0	9	107
		<b>Percent</b>	2.2	0.0	0.6	2.7
	<b>3</b>	<b>Count</b>	10 <sup>†</sup>	0	*	7
		<b>Percent</b>	0.1	0.0	0.0	0.2
	<b>4 or more</b>	<b>Count</b>	0 <sup>†</sup>	0	0	*
		<b>Percent</b>	0.0	0.0	0.0	0.0
	<b>Unknown</b>	<b>Count</b>	0 <sup>†</sup>	0	*	*
		<b>Percent</b>	0.0	0.0	0.0	0.0

**TABLE 25  
TEENAGE BIRTHS BY MARITAL STATUS AND AGE GROUP,  
ARIZONA, 2016**

		Total	Mother's age group			
			<15	15-17	18-19	
<b>Total</b>	<b>Count</b>	5,390	54	1,420 <sup>†</sup>	3,916	
<b>Marital status</b>	<b>Married</b>	<b>Count</b>	534	0	61	473
		<b>Percent</b>	9.9	0.0	4.3	12.1
	<b>Unmarried</b>	<b>Count</b>	4,836	54	1,355	3,427
		<b>Percent</b>	89.7	100.0	95.4	87.5
	<b>Other</b>	<b>Count</b>	20 <sup>†</sup>	0	*	16
		<b>Percent</b>	0.4	0.0	**	0.4

**TABLE 26  
TEENAGE BIRTHS BY MOTHER'S EDUCATION AND AGE GROUP  
ARIZONA, 2016**

		Total	Mother's age group			
			<15	15-17	18-19	
<b>Total</b>	<b>Count</b>	5,390 <sup>†</sup>	54	1,420	3,920 <sup>†</sup>	
<b>Mother's education</b>	<b>8th Grade or Less</b>	<b>Count</b>	246	32	112	102
		<b>Percent</b>	4.6	59.3	7.9	2.6
	<b>Some High School</b>	<b>Count</b>	2,826	21	1,158	1,647
		<b>Percent</b>	52.4	38.9	81.5	42.1
	<b>High School / GED</b>	<b>Count</b>	1,763	0	130	1,633
		<b>Percent</b>	32.7	0.0	9.2	41.7
	<b>Some College</b>	<b>Count</b>	481	0	12	469
		<b>Percent</b>	8.9	0.0	0.8	12.0
	<b>Associate Degree</b>	<b>Count</b>	34	0	0	34
		<b>Percent</b>	0.6	0.0	0.0	0.9
	<b>Bachelor's Degree</b>	<b>Count</b>	0 <sup>†</sup>	0	0	*
		<b>Percent</b>	**	0.0	0.0	**
	<b>Postgraduate Education</b>	<b>Count</b>	0.0	0.0	0.0	0.0
		<b>Percent</b>	0.0	0.0	0.0	0.0
	<b>Unknown</b>	<b>Count</b>	40 <sup>†</sup>	*	8	30
		<b>Percent</b>	0.7	**	0.6	0.8

Notes: \* Cell suppressed due to non-zero count less than 6; \*\* Cell suppressed due to rate/ratio/percent based on non-zero count less than 6; <sup>†</sup> Sum rounded to nearest tens unit due to non-zero addend less than 6.

**TABLE 27  
TEENAGE BIRTHS BY TRIMESTER OF ENTRY INTO PRENATAL CARE  
AND AGE GROUP, ARIZONA, 2016**

		Total	Mother's age group			
			<15	15-17	18-19	
<b>Total</b>	<b>Count</b>	5,390	50†	1,420	3,916	
<b>Prenatal care</b>	<b>No care</b>	<b>Count</b>	*	70	141	
		<b>Percent</b>	**	4.9	3.6	
	<b>1st trimester</b>	<b>Count</b>	2,864	17	671	2,176
		<b>Percent</b>	53.1	31.5	47.3	55.6
	<b>2nd trimester</b>	<b>Count</b>	1,463	15	435	1,013
		<b>Percent</b>	27.1	27.8	30.6	25.9
	<b>3rd trimester</b>	<b>Count</b>	598	15	180	403
		<b>Percent</b>	11.1	27.8	12.7	10.3
	<b>Unknown</b>	<b>Count</b>	250†	*	64	183
		<b>Percent</b>	4.7	**	4.5	4.7

**TABLE 28  
TEENAGE BIRTHS BY NUMBER OF PRENATAL VISITS AND AGE GROUP,  
ARIZONA, 2016**

		Total	Mother's age group			
			<15	15-17	18-19	
<b>Total</b>	<b>Count</b>	5,390	50†	1,420	3,916	
<b>Prenatal visits</b>	<b>No visits</b>	<b>Count</b>	*	70	141	
		<b>Percent</b>	4.0	**	4.9	3.6
	<b>1-4 visits</b>	<b>Count</b>	442	8	141	293
		<b>Percent</b>	8.2	14.8	9.9	7.5
	<b>5-8 visits</b>	<b>Count</b>	1,222	14	349	859
		<b>Percent</b>	22.7	25.9	24.6	21.9
	<b>9-12 visits</b>	<b>Count</b>	2,381	20	592	1,769
		<b>Percent</b>	44.2	37.0	41.7	45.2
	<b>13+ visits</b>	<b>Count</b>	1,045	10	238	797
		<b>Percent</b>	19.4	18.5	16.8	20.4
	<b>Unknown</b>	<b>Count</b>	87	0	30	57
		<b>Percent</b>	1.6	0.0	2.1	1.5

Notes: \* Cell suppressed due to non-zero count less than 6; \*\* Cell suppressed due to rate/ratio/percent based on non-zero count less than 6; † Sum rounded to nearest tens unit due to non-zero addend less than 6.

**TABLE 29  
TOBACCO USE DURING PREGNANCY AMONG FEMALES 19 OR YOUNGER BY  
AGE GROUP, ARIZONA, 2016**

		Total	Mother's age group			
			<15	15-17	18-19	
<b>Total</b>	<b>Count</b>	5,390	54	1,420	3,916	
<b>Substance use</b>	<b>Nonsmoker</b>	<b>Count</b>	5,132	54	1,372	3,706
		<b>Percent</b>	95.2	100.0	96.6	94.6
	<b>Light smoker</b>	<b>Count</b>	149	0	28	121
		<b>Percent</b>	2.8	0.0	2.0	3.1
	<b>Heavy smoker</b>	<b>Count</b>	58	0	7	51
		<b>Percent</b>	1.1	0.0	0.5	1.3
	<b>Unknown</b>	<b>Count</b>	51	0	13	38
		<b>Percent</b>	0.9	0.0	0.9	1.0

**TABLE 30  
RISK FOR LOW-BIRTHWEIGHT (LBW) BIRTHS BY SELECTED CHARACTERISTICS OF FEMALES 19 OR YOUNGER,  
ARIZONA, 2016**

	Mother's age group									
	<15			15-17			18-19			
	Total births	LBW births Count	Percent	Total births	LBW births Count	Percent	Total births	LBW births Count	Percent	
<b>Race/ethnicity</b>	White non-Hispanic	8	*	**	283	19	6.7	1,056	92	8.7
	Hispanic or Latino	32	*	**	877	66	7.5	2,227	168	7.5
	Black or African American	3	0	0.0	81	15	18.5	232	33	14.2
	American Indian or Alaska Native	11	0	0.0	167	12	7.2	362	19	5.2
	Asian	0	0	0.0	12	0	0.0	39	*	**
		54	*	**	1,372	108	7.9	3,706	291	7.9
<b>Smoking during pregnancy</b>	Nonsmoker	0	0	0.0	28	*	**	121	16	13.2
	Light smoker	0	0	0.0	7	0	0.0	51	*	**
	Heavy smoker	0	0	0.0	13	0	0.0	38	7	18.4
	Unknown	0	0	0.0	1,185	95	8.0	3,268	261	8.0
<b>Payer for births</b>	AHCCCS	44	5	0.0	46	*	**	73	7	9.6
	IHS	4	0	0.0	114	7	6.1	435	35	8.0
	Private insurance	1	0	0.0	70	*	**	129	11	8.5
	Self-pay	0	0	0.0	5	*	**	11	*	**
	Unknown	9	*	**	115	66	57.4	324	183	56.5
		45	0	0.0	1,300	43	3.3	3,580	130	3.6
<b>Length of gestation</b>	36 weeks or less	0	0	0.0	5	*	**	12	*	**
	37 weeks or more	10	*	**	211	29	13.7	434	53	12.2
	Unknown	44	*	**	1,179	77	6.5	3,425	249	7.3
<b>Prenatal visits</b>	Less than 5	0	0	0.0	30	6	20.0	57	13	22.8
	5 or more	0	0	0.0						
<b>Unknown</b>										

Notes: \* Cell suppressed due to non-zero count less than 6; \*\* Cell suppressed due to rate/ratio/percent based on non-zero count less than 6.

**TABLE 31  
POPULATION OF FEMALES 19 OR YOUNGER, NUMBER OF PREGNANCIES AND PREGNANCY  
RATES BY AGE GROUP, AND RACE/ETHNICITY, ARIZONA, 2016**

	POPULATION				
	All 19 years or younger	10-14 years	15-19 years	15-17 years	18-19 years
<b>All groups</b>	450,084	224,974	225,110	135,506	89,604
<b>White non-Hispanic</b>	193,090	94,936	98,154	58,746	39,408
<b>Hispanic or Latino</b>	193,357	98,285	95,072	57,759	37,313
<b>Black or African American</b>	24,911	12,432	12,479	7,436	5,043
<b>American Indian or Alaska Native</b>	23,423	11,614	11,809	7,183	4,626
<b>Asian or Pacific Islander</b>	15,303	7,707	7,596	4,382	3,214

Note: The 2015 population denominators are population estimates.

	NUMBER OF PREGNANCIES				
	All 19 years or younger	10-14 years	15-19 years	15-17 years	18-19 years
<b>All groups</b>	6,724	90 <sup>†</sup>	6,639	1,707	4,932
<b>White non-Hispanic</b>	1,834	19	1,815	382	1,433
<b>Hispanic or Latino</b>	3,723	40	3,683	1,015	2,668
<b>Black or African American</b>	431	7	424	104	320
<b>American Indian or Alaska Native</b>	579	13	566	178	388
<b>Asian or Pacific Islander</b>	80 <sup>†</sup>	*	76	15	61

	PREGNANCY RATES PER 1,000 FEMALES				
	All 19 years or younger	10-14 years	15-19 years	15-17 years	18-19 years
<b>All groups</b>	14.9	0.4	29.5	12.6	55.0
<b>White non-Hispanic</b>	9.5	0.2	18.5	6.5	36.4
<b>Hispanic or Latino</b>	19.3	0.4	38.7	17.6	71.5
<b>Black or African American</b>	17.3	0.6	34.0	14.0	63.5
<b>American Indian or Alaska Native</b>	24.7	1.1	47.9	24.8	83.9
<b>Asian or Pacific Islander</b>	5.0	**	10.0	3.4	19.0

Notes: \* Cell suppressed due to non-zero count less than 6; \*\* Cell suppressed due to rate/ratio/percent based on non-zero count less than 6; <sup>†</sup> sum rounded to nearest tens unit due to addend less than 6.

**TABLE 32  
POPULATION OF FEMALES 19 OR YOUNGER BY COUNTY OF RESIDENCE, ARIZONA, 2016**

	All 19 years or younger	10-14 years	15-19 years		
			15-19 years	15-17 years	18-19 years
<b>ARIZONA</b>	450,084	224,974	225,110	135,506	89,604
<b>Apache</b>	5,811	2,973	2,838	1,825	1,013
<b>Cochise</b>	7,445	3,779	3,666	2,269	1,397
<b>Coconino</b>	11,380	4,057	7,323	2,492	4,831
<b>Gila</b>	2,910	1,511	1,399	891	508
<b>Graham</b>	2,859	1,431	1,428	904	524
<b>Greenlee</b>	789	394	395	253	142
<b>La Paz</b>	919	476	443	285	158
<b>Maricopa</b>	279,838	141,857	137,981	85,174	52,807
<b>Mohave</b>	10,543	5,329	5,214	3,442	1,772
<b>Navajo</b>	8,044	4,165	3,879	2,511	1,368
<b>Pima</b>	63,616	30,020	33,596	18,273	15,323
<b>Pinal</b>	26,163	13,962	12,201	8,078	4,123
<b>Santa Cruz</b>	4,083	2,088	1,995	1,259	736
<b>Yavapai</b>	10,722	5,338	5,384	3,350	2,034
<b>Yuma</b>	14,962	7,594	7,368	4,500	2,868

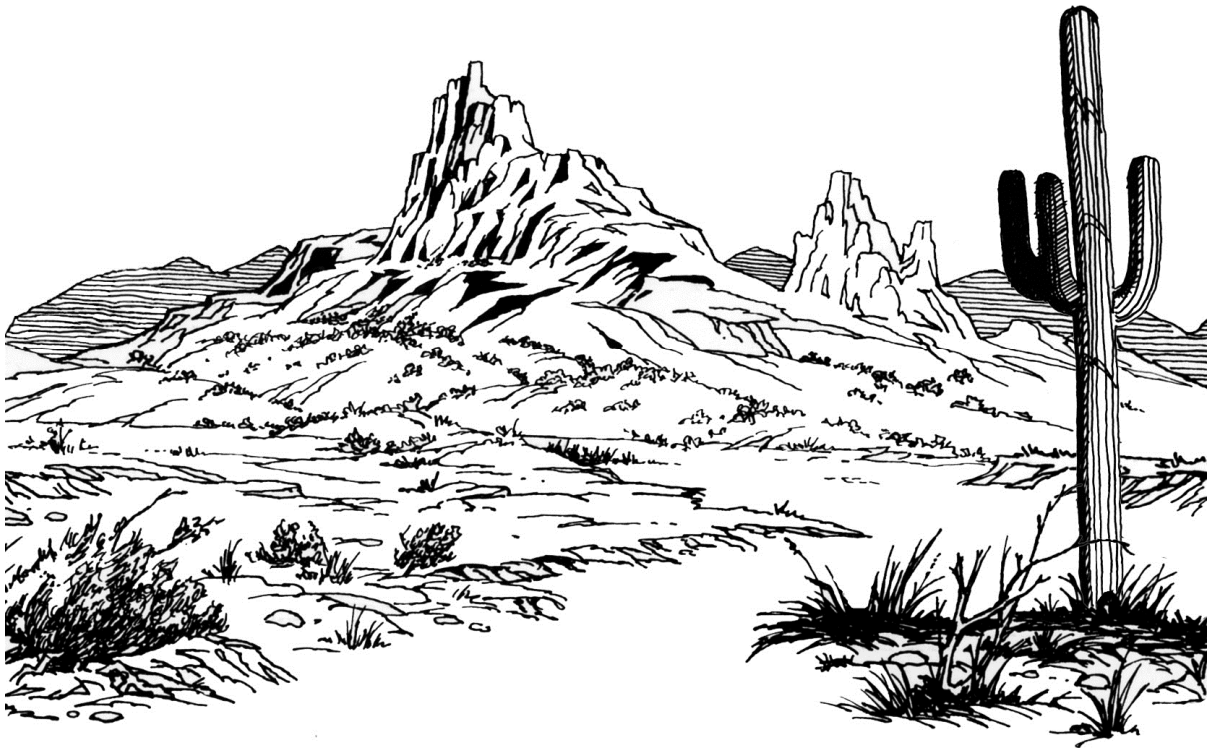
Note: Population denominator tables can be found: <http://pub.azdhs.gov/health-stats>



**APPENDIX  
HOW TO COMPUTE THE RATES OF FIRST AND REPEAT CHILDBEARING**

	2006	2007	2008	2009	2010	2011	2012	2013	2014	2015	2016	Comments
A. The number of females 15-19 years old	213,698	215,079	218,545	220,555	224,302	225,857	227,395	228,652	220,134	222,162	225,110	2010; population estimates for 2005-2015.
B. The number of births to females 15-19 years old	12,746	12,792	12,000	10,820	9,311	8,334	8,050	7,151	6,577	5,843	5,336	Based on the birth database.
C. The rate of births (B/A)*1,000	<b>59.6</b>	<b>59.4</b>	<b>54.9</b>	<b>49.1</b>	<b>41.5</b>	<b>36.9</b>	<b>35.4</b>	<b>31.3</b>	<b>29.9</b>	<b>26.3</b>	<b>23.7</b>	The number of births per 1,000 females 15-19 years old.
D. Cumulative number of mothers who gave birth when 15-19 years old	26,916	27,486	26,958	25,352	25,892	19,816	17,929	16,031	14,384	12,800	11,433	Mothers who gave birth when 15-19 years old. As an example, the 2015 cohort of mothers who were 15-19 years old includes 5,843 who gave birth that year and 7,367 who gave birth prior to 2015 and were still 15-19 years old in 2015 (Table 13).
E. The number of females 15-19 years old who had a birth previously (D-B)	14,170	14,694	14,958	14,532	16,581	11,482	9,879	8,880	7,807	6,957	6,097	The cumulative number of mothers 15-19 years old (Table 13) minus those who gave birth that year.
F. The number of repeat births to females 15-19 years old who had a birth previously	2,864	2,800	2,658	2,252	1,898	1,639	1,521	1,300	1,161	990	861	Table 1B-23 in "Arizona Health Status and Vital Statistics" annual report.
G. The rate of repeat childbearing (F/E)*1,000	<b>202.1</b>	<b>190.6</b>	<b>177.7</b>	<b>155.0</b>	<b>114.5</b>	<b>142.7</b>	<b>154.0</b>	<b>146.4</b>	<b>148.7</b>	<b>142.3</b>	<b>141.2</b>	The number of repeat births per 1,000 females 15-19 years old who had a birth previously.
H. The number of females 15-19 years old who did not have a birth previously (A-E)	199,528	200,385	203,587	206,023	207,721	214,375	217,516	219,772	212,327	215,205	219,013	All 15-19 years old - those who gave birth previously.
I. The number of first-time births to females 15-19 years old who did not have a birth previously	9,880	9,992	9,342	8,568	7,409	6,683	6,522	5,844	5,414	4,851	4,474	Table 1B-23 in "Arizona Health Status and Vital Statistics" annual report.
J. The rate of first-time births (I/H)*1,000	<b>49.5</b>	<b>49.9</b>	<b>45.9</b>	<b>41.6</b>	<b>35.7</b>	<b>31.2</b>	<b>30.0</b>	<b>26.6</b>	<b>25.5</b>	<b>22.5</b>	<b>20.4</b>	The number of first-time births per 1,000 females 15-19 years old who did not have a birth previously.

Our Web site at <http://www.azdhs.gov/plan> provides access to a wide range of statistical information about the health status of Arizonans. The Arizona Health Status and Vital Statistics annual report examines trends in natality, mortality, and morbidity towards established health objectives. In addition to the print and original online versions, the 2016 report is made available as a mobile-friendly e-book. Additional reports and studies include Advance Vital Statistics by County of Residence, Injury Mortality among Arizona Residents (accidents, suicides, homicides, legal intervention, firearm-related fatalities, drug-related deaths, drowning deaths, falls among Arizonans 65 years or older), Hospital Inpatient and Emergency Room Statistics (first-listed diagnosis, procedures, mental disorders, asthma, diabetes, influenza and pneumonia, and substance abuse), Community Vital Statistics, Teenage Pregnancy, Differences in Health Status Among Racial/Ethnic Groups, and Health Status Profile of American Indians in Arizona.



**ARIZONA DEPARTMENT OF HEALTH SERVICES**  
**Bureau of Public Health Statistics**  
**Population Health and Vital Statistics Section**