

ARIZONA DEPARTMENT  
OF HEALTH SERVICES

~ Health and Wellness for all Arizonans ~



**Doug A. Ducey, Governor**  
**State of Arizona**

**Cara M. Christ, M.D., M.S., Director**  
**Arizona Department of Health Services**

**ARIZONA DEPARTMENT OF HEALTH SERVICES  
BUREAU OF PUBLIC HEALTH STATISTICS  
POPULATION HEALTH AND VITAL STATISTICS SECTION**

150 North 18th Avenue, Suite 550  
Phoenix, Arizona 85007  
Phone: 602-542-7333; FAX: 602-542-2940  
<http://pub.azdhs.gov/health-stats>

**This publication can be made available in alternative format.  
Please contact the Bureau of Public Health Statistics  
at 602-542-7333 (voice) or call 1-800-367-8939 (TDD).**

***The Arizona Department of Health Services is  
an Equal Employment Opportunity Agency.***

***Permission to quote from or reproduce materials from this  
publication is granted when due acknowledgment is made.***

# **TEENAGE PREGNANCY, ARIZONA, 2008-2018**

---

**by**

**Marguerite L. S. Kemp, Ph.D., Arizona Vital Statistician  
Yan Huang, M.S., Vital Statistics Health Management Analyst  
Clare Torres, Senior Health Data Analyst**

**January 2020**



# TEENAGE PREGNANCY, ARIZONA, 2008-2018

## Table of Contents

<b>PURPOSE</b> .....	<b>1</b>
<b>METHODS AND SOURCES</b> .....	<b>1</b>
<b>DATA ORGANIZATION</b> .....	<b>1</b>
<b>COMPARATIVE NATIONAL AND STATE DATA</b> .....	<b>2</b>
<b>KEY FINDINGS</b> .....	<b>2</b>
<b>DATA TABLES</b> .....	<b>11</b>

## List of Figures

<b>Figure 1</b> .....	<b>3</b>
PREGNANCY RATES BY AGE GROUP AND YEAR AMONG FEMALES 19 OR YOUNGER, ARIZONA, 2008-2018	
<b>Figure 2</b> .....	<b>3</b>
TRENDS IN THE NUMBER OF PREGNANCIES AND PREGNANCY RATES AMONG FEMALES 19 OR YOUNGER, ARIZONA, 2008-2018	
<b>Figure 3</b> .....	<b>4</b>
TRENDS IN THE NUMBER OF PREGNANCIES BY RACE/ETHNICITY AMONG FEMALES 19 OR YOUNGER, ARIZONA, 2008-2018	
<b>Figure 4</b> .....	<b>4</b>
COMPARISON OF PREGNANCY RATES BY YEAR AMONG HISPANIC OR LATINOS AND ALL FEMALES 19 OR YOUNGER, ARIZONA, 2008-2018	
<b>Figure 5</b> .....	<b>5</b>
COMPARISON OF PREGNANCY RATES BY YEAR AMONG WHITE NON-HISPANICS AND ALL FEMALES 19 OR YOUNGER, ARIZONA, 2008-2018	
<b>Figure 6</b> .....	<b>5</b>
COMPARISON OF PREGNANCY RATES BY YEAR AMONG AMERICAN INDIAN OR ALASKA NATIVES AND ALL FEMALES 19 OR YOUNGER, ARIZONA, 2008-2018	
<b>Figure 7</b> .....	<b>6</b>
COMPARISON OF PREGNANCY RATES BY YEAR AMONG BLACK OR AFRICAN AMERICANS AND ALL FEMALES 19 OR YOUNGER, ARIZONA, 2008-2018	
<b>Figure 8</b> .....	<b>6</b>
COMPARISON OF PREGNANCY RATES BY YEAR AMONG ASIAN OR PACIFIC ISLANDERS AND ALL FEMALES 19 OR YOUNGER, ARIZONA, 2008-2018	
<b>Figure 9</b> .....	<b>7</b>
PROPORTIONAL CONTRIBUTION OF SURGICAL AND NON-SURGICAL ABORTIONS BY YEAR AMONG FEMALES 19 OR YOUNGER, ARIZONA, 2008-2018	
<b>Figure 10</b> .....	<b>7</b>
CUMULATIVE NUMBER OF MOTHERS WHO WERE 19 OR YOUNGER IN ARIZONA BY YEAR, 2008-2018	
<b>Figure 11</b> .....	<b>8</b>
RATES OF FIRST AND REPEAT BIRTHS TO FEMALES 15-19 YEARS, ARIZONA, 2008 AND 2018	
<b>Figure 12</b> .....	<b>8</b>
BIRTHS TO MOTHERS 19 OR YOUNGER BY MARITAL STATUS, ARIZONA, 1998, 2008, AND 2018	
<b>Figure 13</b> .....	<b>9</b>
NUMBER OF BIRTHS TO MOTHERS 19 OR YOUNGER BY PAYER, ARIZONA, 2008 AND 2018	
<b>Figure 14</b> .....	<b>9</b>
TRENDS IN THE INCIDENCE OF SEXUALLY TRANSMITTED INFECTIONS AMONG FEMALES 15-19 YEARS, ARIZONA, 2008-2018	
<b>Figure 15</b> .....	<b>10</b>
BIRTH RATES FOR TEENAGERS 15-19 YEARS, NATIONALLY AND IN ARIZONA, 2008-2018	
<b>Figure 16</b> .....	<b>10</b>
BIRTH RATES FOR HISPANIC OR LATINO TEENAGERS 15-19 YEARS, NATIONALLY AND IN ARIZONA, 2008-2018	

## List of Tables

<b>Table 1</b> .....	12
PREGNANCIES AND PREGNANCY OUTCOME BY AGE GROUP AND YEAR, FEMALES 19 OR YOUNGER, ARIZONA, 2008-2018	
<b>Table 2</b> .....	13
PREGNANCY RATES BY PREGNANCY OUTCOME, AGE GROUP, AND YEAR, FEMALES 19 OR YOUNGER, ARIZONA, 2008-2018	
<b>Table 3</b> .....	14
LIVE BIRTHS TO FEMALES 19 OR YOUNGER BY AGE GROUP, RACE/ETHNICITY, AND YEAR, ARIZONA, 2008-2018	
<b>Table 4</b> .....	15
ABORTIONS TO FEMALES 19 OR YOUNGER BY AGE GROUP, RACE/ETHNICITY, AND YEAR, ARIZONA, 2008-2018	
<b>Table 5</b> .....	16
NUMBER OF PREGNANCIES BY PREGNANCY OUTCOME, RACE/ETHNICITY, AND YEAR AMONG FEMALES AGE 17 OR YOUNGER WITH RATES, ARIZONA, 2008-2018	
<b>Table 6</b> .....	17
NUMBER OF PREGNANCIES BY PREGNANCY OUTCOME, RACE/ETHNICITY, AND YEAR AMONG FEMALES 15-17 YEARS OLD WITH RATES, ARIZONA, 2008-2018	
<b>Table 7</b> .....	18
NUMBER OF PREGNANCIES BY PREGNANCY OUTCOME, RACE/ETHNICITY, AND YEAR AMONG FEMALES 18-19 YEARS OLD WITH RATES, ARIZONA, 2008-2018	
<b>Table 8</b> .....	19
NUMBER OF PREGNANCIES BY PREGNANCY OUTCOME, RACE/ETHNICITY, AND YEAR AMONG FEMALES 19 OR YOUNGER WITH RATES, ARIZONA, 2008-2018	
<b>Table 9</b> .....	20
TRENDS IN PREGNANCY RATES BY COUNTY OF RESIDENCE AMONG FEMALES 10-17 YEARS, 18-19 YEARS, AND 19 YEARS OR YOUNGER, ARIZONA, 2008-2018	
<b>Table 10</b> .....	21
LIVE BIRTHS TO FEMALES 19 OR YOUNGER AS A PERCENTAGE OF TOTAL LIVE BIRTHS BY AREA, RACE/ETHNICITY, AND YEAR, ARIZONA, 2008-2018	
<b>Table 11</b> .....	22
BIRTH RATES BY AGE GROUP FOR FEMALES 19 OR YOUNGER, ARIZONA AND UNITED STATES, 2008-2018	
<b>Table 12</b> .....	23
REPEAT PREGNANCIES AMONG TEENAGE MOTHERS GIVING BIRTH BY AGE AND YEAR, ARIZONA, 2008-2018	
<b>Table 13</b> .....	24
CUMULATIVE NUMBER OF MOTHERS WHO WERE 19 OR YOUNGER IN ARIZONA IN 2018	
<b>Table 14</b> .....	25
TRENDS IN TEEN PREGNANCY RATES BY RACE/ETHNICITY AND AGE GROUP, ARIZONA, 2008-2018	
<b>Table 15</b> .....	26
TRENDS IN SEXUALLY TRANSMITTED INFECTIONS BY AGE GROUP AND YEAR AMONG FEMALES 10-19 YEARS, ARIZONA, 2008-2018	
<b>Table 16</b> .....	27
TRENDS IN THE INCIDENCE RATES OF SEXUALLY TRANSMITTED INFECTIONS BY AGE GROUP AND YEAR AMONG FEMALES 10-19 YEARS, ARIZONA, 2008-2018	
<b>Table 17</b> .....	28
PREGNANCIES AND PREGNANCY RATES OF FEMALES 19 OR YOUNGER BY COUNTY OF RESIDENCE, ARIZONA, 2018	
<b>Table 18</b> .....	29
BIRTHS AND BIRTH RATES, FEMALES 19 OR YOUNGER BY COUNTY OF RESIDENCE, ARIZONA, 2018	
<b>Table 19</b> .....	30
PREGNANCY RATES AND NUMBER OF LIVE BIRTHS, FETAL DEATHS, AND ABORTIONS TO TEENS BY INDIVIDUAL AGE, ARIZONA, 2018	
<b>Table 20</b> .....	31
BIRTHS TO FEMALES 19 OR YOUNGER BY AGE AND COUNTY OF RESIDENCE, ARIZONA, 2018	
<b>Table 21</b> .....	32
ABORTIONS TO FEMALES 19 OR YOUNGER BY AGE AND COUNTY OF RESIDENCE, ARIZONA, 2018	

## List of Tables (continued)

<b>Table 22</b> .....	33
SOURCES OF PAYMENT FOR LABOR AND DELIVERY, FEMALES 19 OR YOUNGER BY AGE, AND COUNTY OF RESIDENCE, ARIZONA, 2018	
<b>Table 23</b> .....	34
SOURCES OF PAYMENT FOR LABOR AND DELIVERY, FEMALES 19 OR YOUNGER BY AGE GROUP, ARIZONA, 2018	
<b>Table 24</b> .....	35
TEENAGE BIRTHS BY NUMBER OF PREVIOUS PREGNANCIES BY AGE GROUP, ARIZONA, 2018	
<b>Table 25</b> .....	35
TEENAGE BIRTHS BY MARITAL STATUS AND AGE GROUP, ARIZONA, 2018	
<b>Table 26</b> .....	35
TEENAGE BIRTHS BY MOTHER'S EDUCATION AND AGE GROUP, ARIZONA, 2018	
<b>Table 27</b> .....	36
TEENAGE BIRTHS BY TRIMESTER OF ENTRY INTO PRENATAL CARE AND AGE GROUP, ARIZONA, 2018	
<b>Table 28</b> .....	36
TEENAGE BIRTHS BY NUMBER OF PRENATAL VISITS AND AGE GROUP, ARIZONA, 2018	
<b>Table 29</b> .....	37
TOBACCO AND/OR ALCOHOL USE DURING PREGNANCY AMONG FEMALES 19 OR YOUNGER BY AGE GROUP, ARIZONA, 2018	
<b>Table 30</b> .....	38
RISK FOR LOW-BIRTHWEIGHT (LBW) BIRTHS BY SELECTED CHARACTERISTICS OF FEMALES 19 OR YOUNGER, ARIZONA, 2018	
<b>Table 31</b> .....	39
POPULATION OF FEMALES 19 OR YOUNGER, NUMBER OF PREGNANCIES AND PREGNANCY RATES BY AGE GROUP, AND RACE/ETHNICITY, ARIZONA, 2018	
<b>Table 32</b> .....	40
POPULATION OF FEMALES 19 OR YOUNGER BY COUNTY OF RESIDENCE, ARIZONA, 2018	
<b>Appendix</b> .....	41
HOW TO COMPUTE THE RATES OF FIRST AND REPEAT CHILDBEARING	





## PURPOSE

This report is the annual update of information about pregnancies among females under age 20. The data for 2018 is placed in a temporal context by comparing it with the data from the preceding years. Earlier reports are available online at <http://pub.azdhs.gov/health-stats/report/tp/index.php>.

## METHODS AND SOURCES

In this report, pregnancies are measured as the sum of three components: live births, fetal deaths (or stillbirths), and reported abortions to Arizona resident women, unless otherwise specified. Not included are spontaneous fetal losses that occur at less than 20 weeks of gestation. Induced terminations of pregnancy do not include those performed out-of-state to Arizona residents, since they are not reported in Arizona. Pregnancy statistics for Arizona are not available on a sub-county level.

Teens are defined as 10-14 year old preadolescents and adolescents 15-19 years of age. Where possible, the data presented distinguishes 18-19 year old teenagers from those aged 15-17 and girls less than 15 years of age.

The primary source documents for the data are the certificates of live births, certificates of fetal deaths, and reports of induced terminations of pregnancy filed with the Arizona Department of Health Services.

The population denominators for Arizona's resident females used to calculate rates for 2003-2009 and 2011-2018 are population estimates of Arizona resident females aged 10-19 years. The 2010 denominators are the actual census enumerations from the U.S. Census Bureau. Detailed information about the assumptions and specific data sources is available online at <http://pub.azdhs.gov/health-stats/menu/info/pop/index.php>.

The 2018 Teenage Pregnancy report suppresses information in tables with small cell sizes. To protect the anonymity of the individuals included in this report, cells in tables with five or fewer observations are denoted by an asterisk (\*), cells containing rates based on counts of five or fewer are denoted by a double-asterisk (\*\*), and cells containing sums based on addends of five or fewer are rounded to the nearest tens-unit and denoted by a dagger (†).

## DATA ORGANIZATION

Tables 1-14 present annual numbers and rates of pregnancy, fertility, and abortion by year from 2008 to 2018 for Arizona teens. Information is presented for specific age groups and by race/ethnicity. Temporal trends and changes may be assessed from this data. Proportional contribution of teen births to all births is shown in Table 10 by area of residence and race/ethnic group in Arizona from 2008 to 2018. Table 11 compares birth rates in Arizona to those in the United States. The annual numbers of repeat pregnancies among teenage mothers are shown by age and year from 2008 to 2018 in Table 12.

Table 14 presents teen pregnancy rates by race/ethnicity and age group by year from 2008 to 2018. Table 15 provides information about the incidence of sexually transmitted infections among females 10-14 and 15-19 years old in Arizona in 2008-2018. Table 16 shows the incidence rates by year from 2008 to 2018.

Frequency counts, proportions, and rates in Tables 17-32 all apply to the 2018 data. Tables 17-18 and 20-22 provide data by county of residence. Table 19 presents pregnancy rates by single year of age among females 19 and younger. Live births to teenage mothers are also reported in Tables 23-30 by source of payment for labor and delivery, previous pregnancies, marital status, education, trimester of entry into prenatal care, number of prenatal visits, tobacco use during pregnancy, and risk for low-birthweight by selected characteristics. The 2018 population denominators for Arizona resident females by age group and race/ethnicity, as well as by age group and county of residence, are presented in Table 31 and Table 32. The *Appendix* demonstrates "How to compute the rates of first and repeat childbearing" using the annual data for 2008-2018.

## COMPARATIVE NATIONAL AND STATE DATA

Timely, comparable, and reliable teen pregnancy statistics for other States and the Nation provide meaningful comparisons to place Arizona's teenage birth experiences in context. The Center for Disease Control (CDC) provides a useful source of information on national pregnancy outcomes. The most recent national abortion data provided by the CDC available is for 2015<sup>1</sup> and the most recent fetal death report published by the CDC presents statistics from 2014 through 2016<sup>2</sup>. Another source of national data on reproductive health is the Guttmacher Institute. The latest report<sup>3</sup>, published by the Institute in September 2017, covers statistics available on the incidence of teen pregnancy, birth and abortion in the United States for 2013, with trend analysis since 1975. The authors present the complete count of births provided by every state to the NCHS in combination with the estimated numbers of abortions, early miscarriages, and fetal deaths. The number of abortions is estimated from surveys the Alan Guttmacher Institute conducts of known abortion providers (i.e. these data are by the place of occurrence and not by the woman's place of residence). The fetal loss estimates – including early miscarriages before 20 weeks of gestation (and estimated as 20% of live births plus 10% of abortions) - are from pregnancy history information collected by the National Survey of Family Growth (NSFG). Unlike vital statistics reports of fetal losses occurring at gestations of 20 weeks or more, NSFG include all gestations. Since the majority of fetal losses occur early in pregnancy before the reporting requirements for fetal deaths are in effect, their inclusion dramatically raises both the fetal loss rate and the pregnancy rate. The National Survey of Family Growth data are not state-specific. Arizona teen pregnancy rates cannot be compared with the rates of their peers nationally. No comparable state-by-state teen pregnancy data for 2008 – 2018 are available at this time.

## KEY FINDINGS

The following section presents some illustrative findings contained in the figures and tables of the report. It is not intended to be an exhaustive analysis of the tabulated data.

- **In 2018, the pregnancy rate of 12.6 pregnancies per 1,000 females 19 years or younger was 60.0 percent lower than the rate of 31.6 per 1,000 in 2008. The teen pregnancy rate of 12.6 per 1,000 females 19 years or younger was the lowest teen pregnancy rate since at least 1983.**
- **It is only since 2008 that the reduction in the number of teen pregnancies was accompanied by an equally impressive decline in pregnancy rates.**
- **Historically, the declines in teenage pregnancy have been steeper for younger teenagers than for their older counterparts, but recently are becoming more closely aligned. The rate for teenagers 15-17 years dropped steeply by 68.8 percent from 34.6 per 1,000 in 2008 to 10.8 in 2018. The rate for older teenagers (aged 18-19 years) fell by 58.2 percent from 111.3 per 1,000 in 2008 to 46.6 per 1,000 in 2018.**
- **The 2018 teen pregnancy rate of 12.6 per 1,000 was based on 5,829 pregnancies occurring among 460,830 females aged 10-19 years. The number of 5,829 teen pregnancies in 2018 was 6.8 percent lower than 2017 and was the lowest number of teen pregnancies since 1984.**
- **From 2008 to 2018, the number of teen pregnancies declined most among White non-Hispanic teens (61.2 percent), followed by declines among American Indians (60.3 percent), and Hispanic or Latino teens (57.1 percent).**
- **In 2018, Hispanic or Latino females accounted for 57.1 percent of all pregnancies in this age group, followed by White non-Hispanics (25.6 percent).**
- **In each year from 2008 to 2018, the pregnancy rates of Hispanic or Latino females were consistently greater than the average rates for all females 19 years or younger in Arizona. In 2018, the Hispanic rate exceeded the average rate for all groups by 30.9 percent.**
- **If the 2018 "risk of pregnancy" for Asian teens (i.e., their pregnancy rate of 4.6 per 1,000), were to be applied to all Arizona females 19 years or younger, it would reduce the number of Arizona teen pregnancies from 5,829 to just 2,120 ((4.6 per 1,000) \* 460,830).**
- **The first birth rate for childless teenagers has dropped 62.2 percent from 45.9 first-time births per 1,000 females 15-19 years old in 2008 to 17.4 per 1,000 in 2018.**
- **The repeat birth rates for teenagers who had already had a child decreased by 18.9 percent from 177.7 in 2008 to 144.2 per 1,000 females 15-19 years old in 2018, who had a previous birth.**
- **Unwed mothers have accounted for an increasing annual proportion of births throughout the 1990s and 2000s. In 2018, non-marital births accounted for 89.9 percent of births to mothers 19 years or younger.**
- **The total number of births to mothers 19 years or younger decreased by 61.7 percent from 12,161 in 2008 to 4,659 in 2018. In contrast, the proportional share of births paid for by the Arizona Health Care Cost Containment System (AHCCCS, the State's Medicaid program) increased from 81.6 percent in 2008 to 82.3 percent in 2018.**

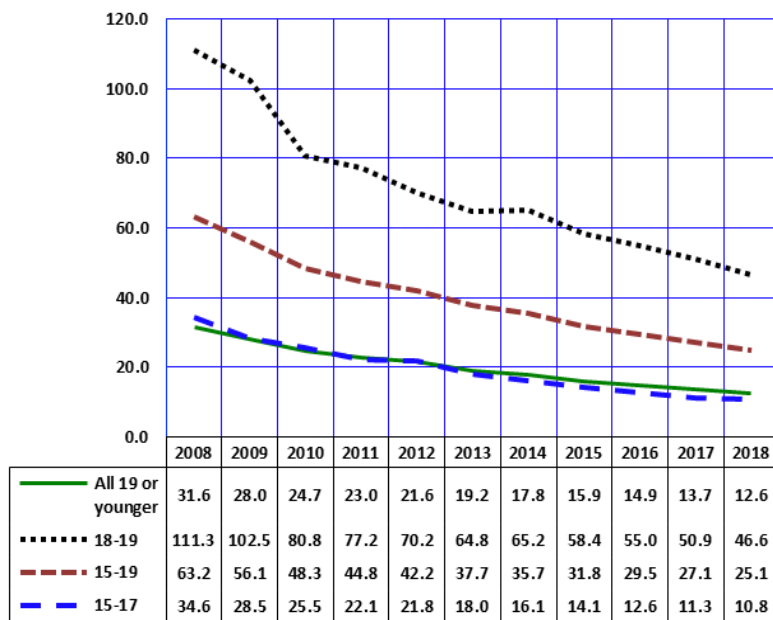
<sup>1</sup> [https://www.cdc.gov/mmwr/volumes/68/ss/ss6811a1.htm?s\\_cid=ss6811a1](https://www.cdc.gov/mmwr/volumes/68/ss/ss6811a1.htm?s_cid=ss6811a1)

<sup>2</sup> <https://www.cdc.gov/nchs/products/databriefs/db316.htm>

<sup>3</sup> <https://www.guttmacher.org/report/us-adolescent-pregnancy-trends-2013>

KEY FINDINGS

**Figure 1**  
Pregnancy Rates by Age Group and Year among Females 19 or Younger, Arizona, 2008-2018

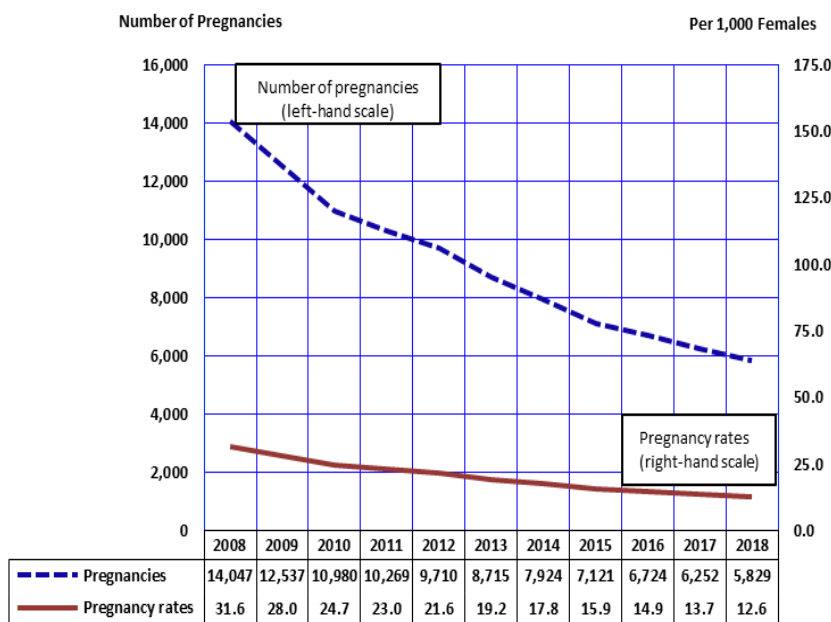


Note: All rates are per 1,000 females in specified group.

Teenage pregnancy rates dropped 60.0 percent overall from 2008 to 2018. (Figure 1, Table 2). The declines in teenage pregnancy have been much steeper for younger than for older teenagers. The rate for teenagers 15-17 years dropped steeply by 68.8 percent from 34.6 per 1,000 in 2008 to 10.8 in 2018. The rate for older teenagers (aged 18-19 years) fell by 58.2 percent from 111.3 per 1,000 in 2008 to 46.6 per 1,000 in 2018.

From 2008 to 2018, birth rate of teenagers 19 years old or younger declined; fetal losses rate fell and remained pretty stable at 0.1 per 1,000 females, while the abortion rate increased from 2010 to 2011 and returned to 3.4 per 1,000 females in 2018 (Table 2). The increase in the teenage abortion rate from 2010 to 2011 is likely attributable to changes in abortion reporting requirements that took effect in 2011.

**Figure 2**  
Trends in the Number of Pregnancies and Pregnancy Rates among Females 19 or Younger, Arizona, 2008-2018



Note: Pregnancy rate = the number of pregnancies per 1,000 females in specified group.

Trends in the number of pregnancies to teenage women do not always parallel the pregnancy rate. The teen pregnancy rate measures the proportion of teenagers becoming pregnant in a given year; in other words, the relative "risk for pregnancy" in a population "at risk." The number of pregnancies is, however, also determined by the size of the population "at risk," or in this case by the number of teenage females in the population.

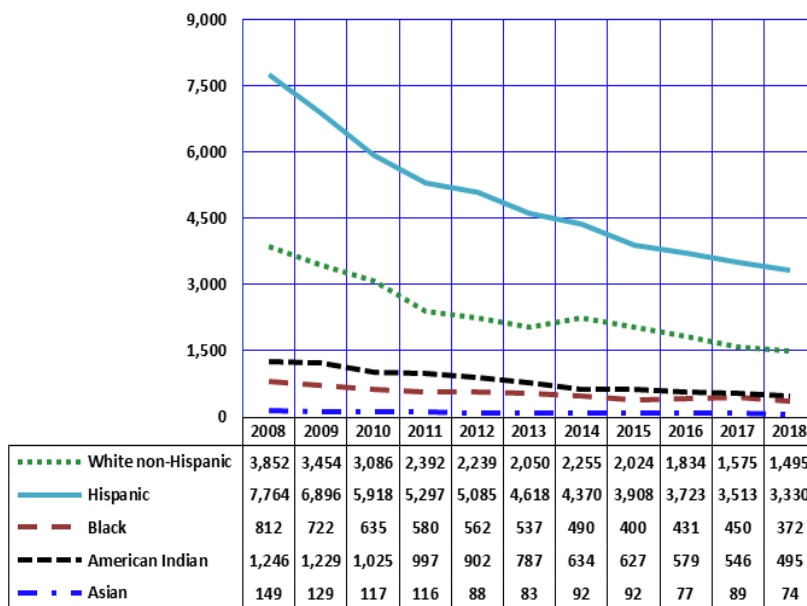
The 2018 teen pregnancy rate of 12.6 per 1,000 was based on 5,829 pregnancies occurring among 460,830 females aged 10-19 years. The number of 5,829 teen pregnancies in 2018 was 6.8 percent lower than 2017 and was the lowest number of teen pregnancies since 1984.

KEY FINDINGS

The number of pregnancies to Hispanic females aged 19 years or younger exceeded the number of pregnancies among White non-Hispanic peers in every year since 1994 (**Figure 3** and **Table 8** in this report show only the data for 2008-2018). In 2018, Hispanic or Latino females accounted for 57.1 percent of all pregnancies in this age group, followed by White non-Hispanics (25.6 percent). Black or African American, Asian or Pacific Islander, and American Indian females aged 19 years or younger accounted for a larger share of pregnancies in 2018 (16.1 percent) than they did in 2008 (15.7 percent).

From 2008 to 2018, the number of teen pregnancies declined particularly steeply for White non-Hispanic (61.2 percent), American Indians (60.3 percent), and Hispanic or Latino (57.1 percent).

**Figure 3**  
Trends in the Number of Pregnancies\* by Race/Ethnicity among Females 19 or Younger, Arizona, 2008-2018



Note: The sum of live births + induced abortions + spontaneous fetal deaths.

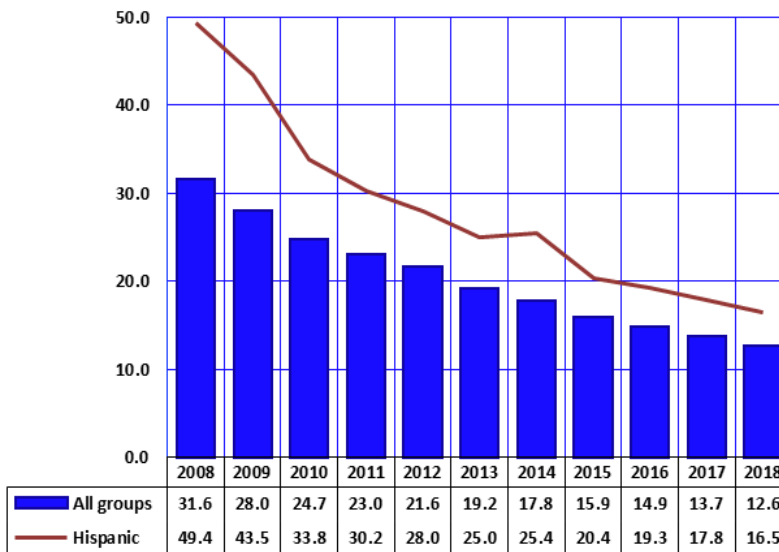
**Figure 4**  
Comparison of Pregnancy Rates by Year among Hispanic or Latinos and all Females 19 or Younger, Arizona, 2008-2018

The teen pregnancy rates for all race and ethnic groups were lower in 2018 than in 2008 (**Figure 1**). However, the temporal trends in annual teen pregnancy rates differed considerably by race/ethnicity.

**Figures 4, 5, 6, 7, and 8** reveal race/ethnicity-specific trends in teen pregnancy rates in Arizona in 2008-2018.

From 2008 to 2018, the teenage pregnancy rate for Hispanic or Latino women declined more than 50 percent (66.6 percent), with the majority of the decline occurring between 2008 and 2018 (**Figure 4**).

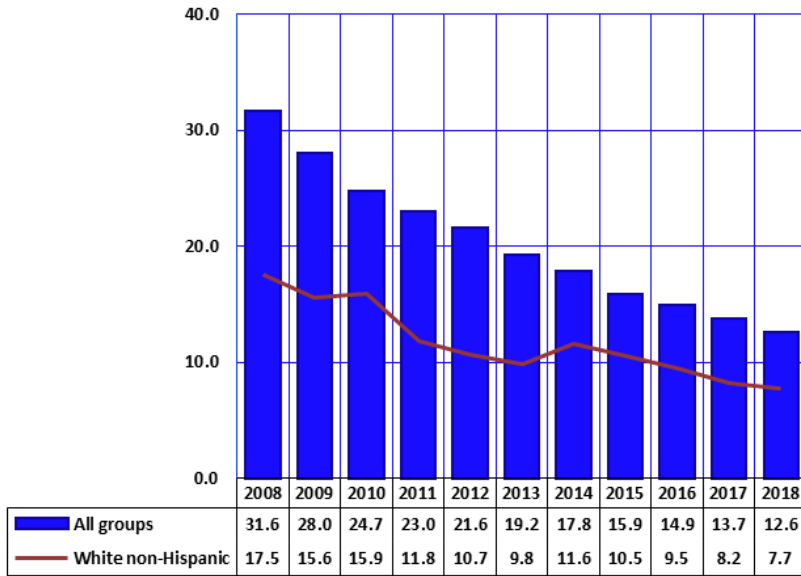
In each year from 2008 to 2018, the pregnancy rates of Hispanic or Latino females were consistently greater than the average rates for all females 19 years or younger in Arizona. In 2018, the Hispanic rate exceeded the average rate for all groups by 31.0 percent.



Note: All rates are per 1,000 females in specified group.

KEY FINDINGS

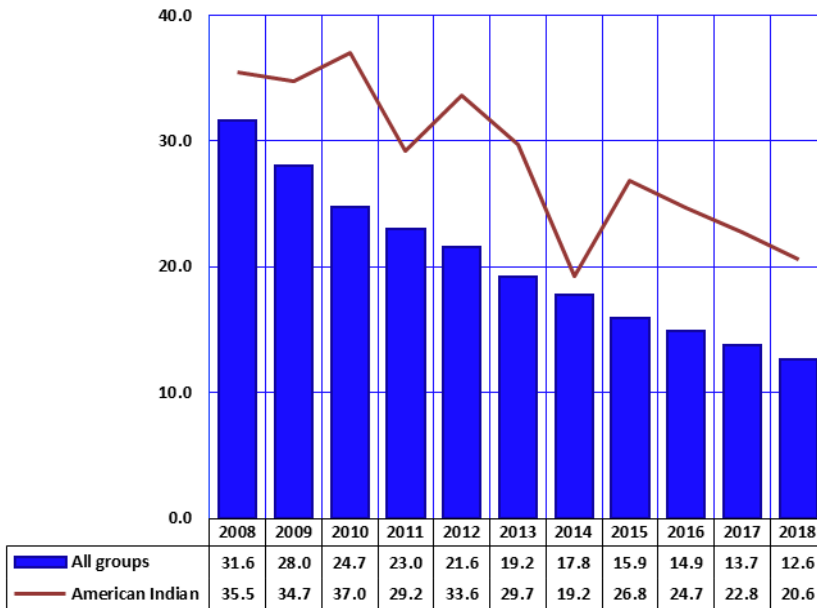
**Figure 5**  
**Comparison of Pregnancy Rates by Year among White non-Hispanics**  
**and all Females 19 or Younger, Arizona, 2008-2018**



The pregnancy rate for White non-Hispanics has gradually declined from 2008 to 2018 (56.0 percent), with the exception of slight increases in 2010 and 2014 (Figure 5). In each year from 2008 to 2018, the pregnancy rates for White non-Hispanic females were lower than the average rates for all females 19 years or younger in Arizona.

Note: All rates are per 1,000 females in specified group.

**Figure 6**  
**Comparison of Pregnancy Rates by Year among American Indian**  
**or Alaska Natives and all Females 19 or Younger, Arizona, 2008-2018**



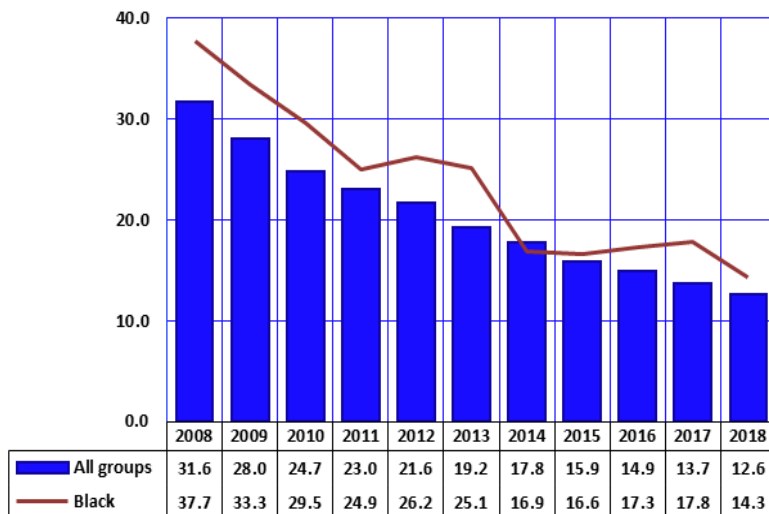
The pregnancy rate among American Indian females 19 years or younger varied somewhat erratically from 2008 to 2018, showing a 21.1 percent decrease from 2010 to 2011, followed by a 15.1 percent increase from 2011 to 2012, a 35.4 percent decline from 2013 to 2014, an increase in 2015, and then a decline afterwards (Figure 6). The American Indian teenage pregnancy rate was higher than the average for all groups from 2008 to 2018.

Note: Pregnancy rate = the number of pregnancies per 1,000 females in specified group.

KEY FINDINGS

**Figure 7**  
**Comparison of Pregnancy Rates by Year among Black or African Americans and all Females 19 or Younger, Arizona, 2008-2018**

Pregnancy rates for Black or African American females 19 years or younger decreased from 37.7 per 1,000 in 2008 to 14.3 per 1,000 in 2018 (**Figure 7**). Excluding 2014, the pregnancy rates for Black or African American teenagers exceeded the pregnancy rate for all groups.

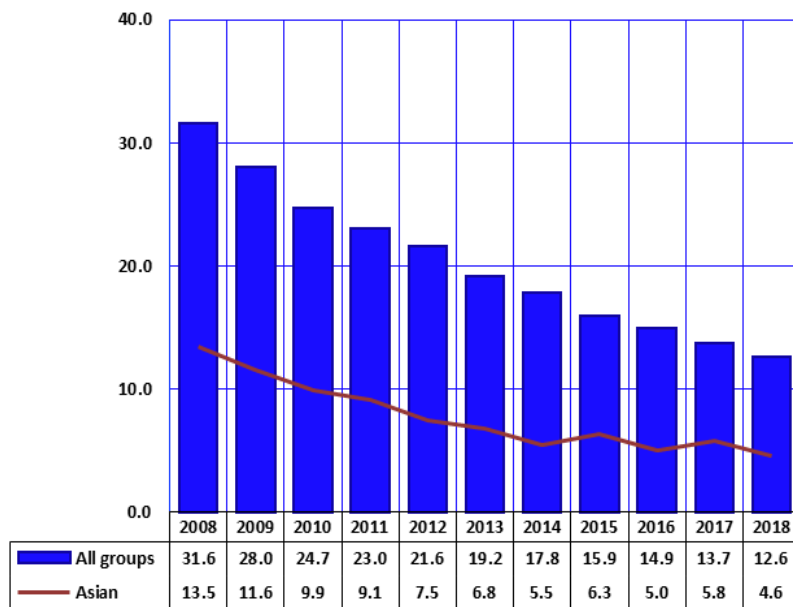


Note: All rates are per 1,000 females in specified group.

**Figure 8**  
**Comparison of Pregnancy Rates by Year among Asian or Pacific Islanders and all Females 19 or Younger, Arizona, 2008-2018**

In each year from 2008 to 2018, the pregnancy rates for Asian or Pacific Islander females 19 years or younger were substantially lower than the average rates among all females 19 years or younger in Arizona (**Figure 8**). In 2018, the Asian rate (4.6 per 1,000) was 63.5 percent lower than the rate for all groups (12.6 per 1,000).

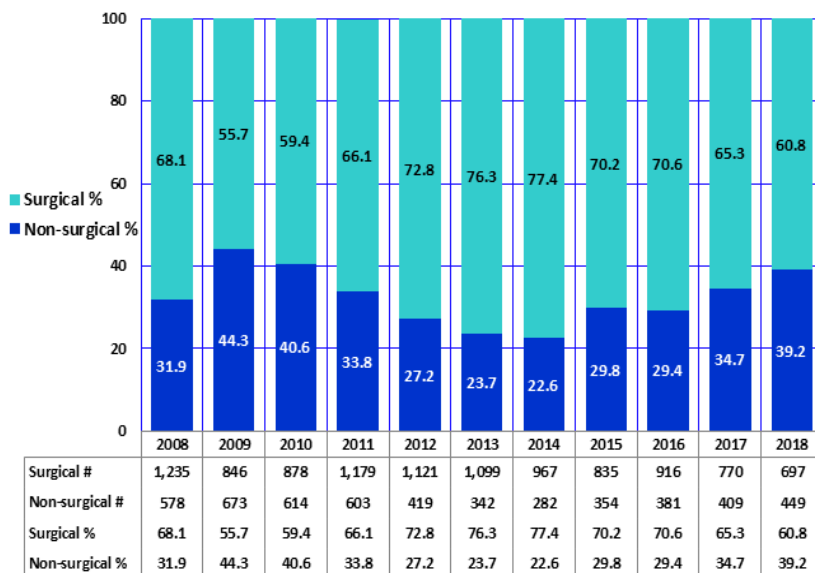
If the 2018 “risk for pregnancy” of Asian teens (i.e., their pregnancy rate) applied to all Arizona females 19 years or younger, the number of teen pregnancies in the State would have been reduced from 5,829 to approximately 2,120 ((4.6/1,000) \* 460,830).



Note: All rates are per 1,000 females in specified group.

KEY FINDINGS

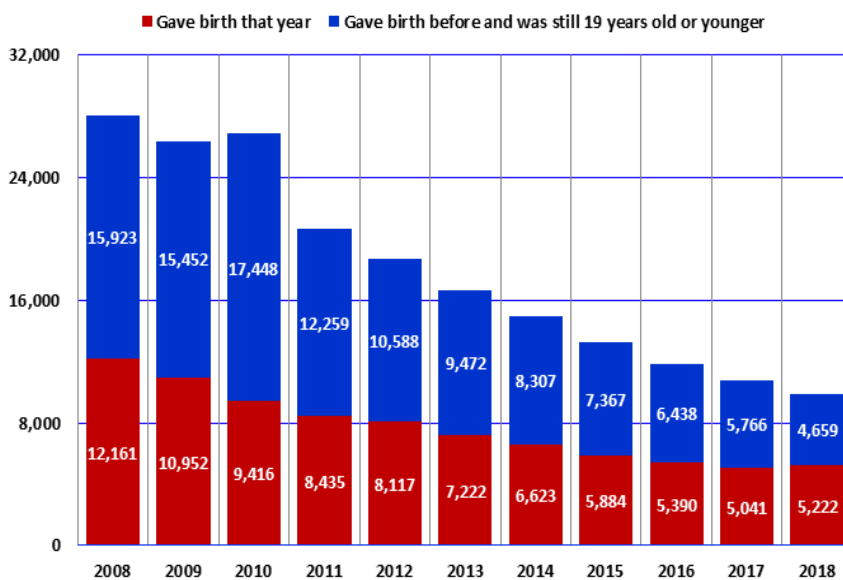
**Figure 9**  
**Proportional Contribution of Surgical and Non-Surgical Abortions**  
**by Year among Females 19 or Younger, Arizona, 2008-2018**



The proportion of non-surgical abortions to females 19 years or younger increased 22.9 percent from 2008 (31.9 percent) to 2018 (39.2 percent), while the proportion of surgical abortions decreased 10.7 percent over that period (**Figure 9**).

Note: Non-surgical - Mifepristone, Methotrexate, RU486, etc.

**Figure 10**  
**Cumulative Number of Mothers who were 19 or Younger**  
**in Arizona by Year, 2008-2018**



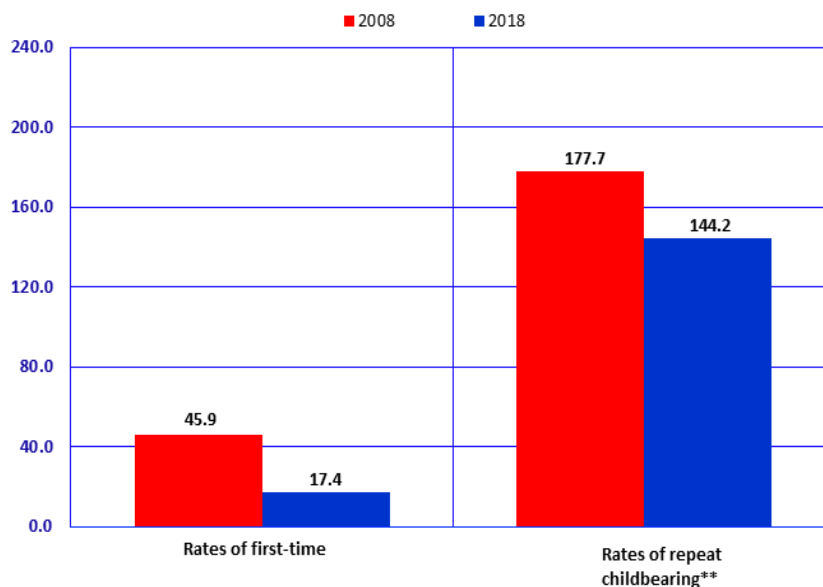
There were approximately 9,881 mothers under the age of 20 in Arizona in 2018. Among them there were the 4,659 who gave birth in 2018 and the 5,222 who gave birth prior to 2018 and were still 19 years old or younger in 2018 (**Figure 10, Table 13**). The cumulative number of mothers who were 19 years or younger in Arizona in 2018 decreased by 64.8 percent from 28,084 in 2008.

KEY FINDINGS

**Figure 11**  
**Rates of First and Repeat Births to Females 15-19 Years, Arizona, 2008 and 2018**

The first birth rate for childless teenagers has dropped 62.1 percent from 45.9 first-time births per 1,000 females 15-19 years old in 2008 to 17.4 per 1,000 in 2018 (**Figure 12**).

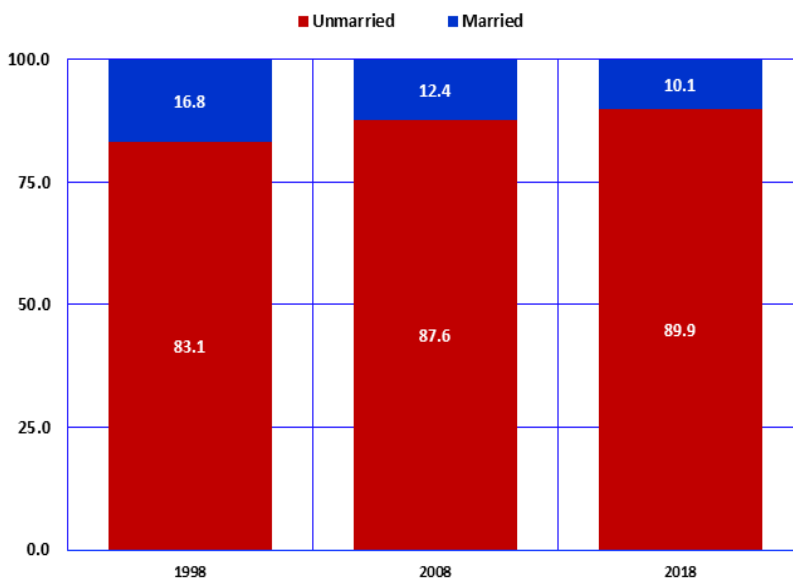
The repeat birth rates for teenagers who had already had a child decreased by 18.9 percent from 177.7 in 2008 to 144.2 per 1,000 females 15-19 years old in 2018 who had a previous birth (**Figure 12**).



Notes: \* Number of first births per 1,000 females 15-19 years old who have not had a birth; \*\* Number of repeat births per 1,000 females 15-19 years old who have had a previous birth; See Appendix "How to compute rates of first and repeat childbearing."

**Figure 12**  
**Births to Mothers 19 or Younger by Marital Status, Arizona, 1998, 2008, and 2018**

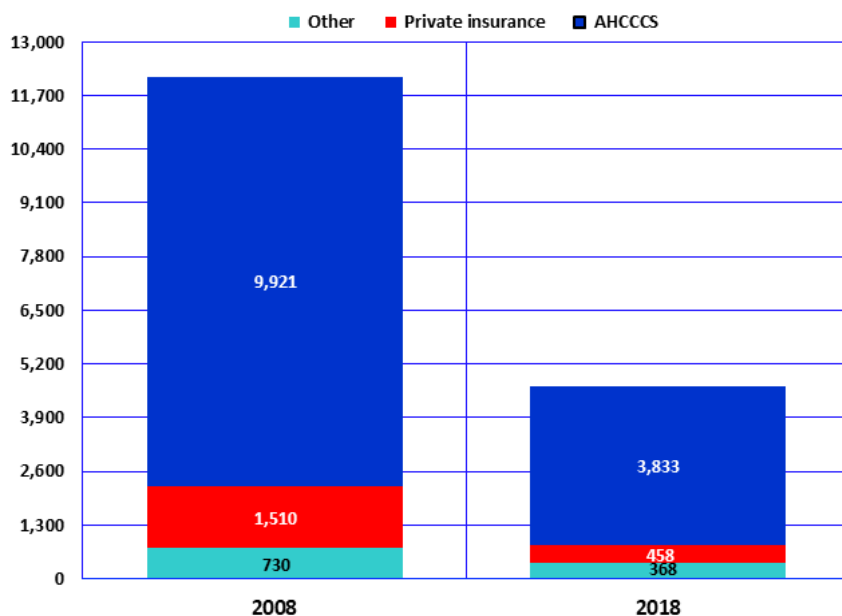
Unwed mothers have accounted for an increasing annual proportion of births throughout the 1990s and 2000s. Two decades ago, more than 7 out of 10 teenage mothers were unmarried (**Figure 13**). In 2018, non-marital births accounted for 89.9 percent of births to mothers 19 years or younger.





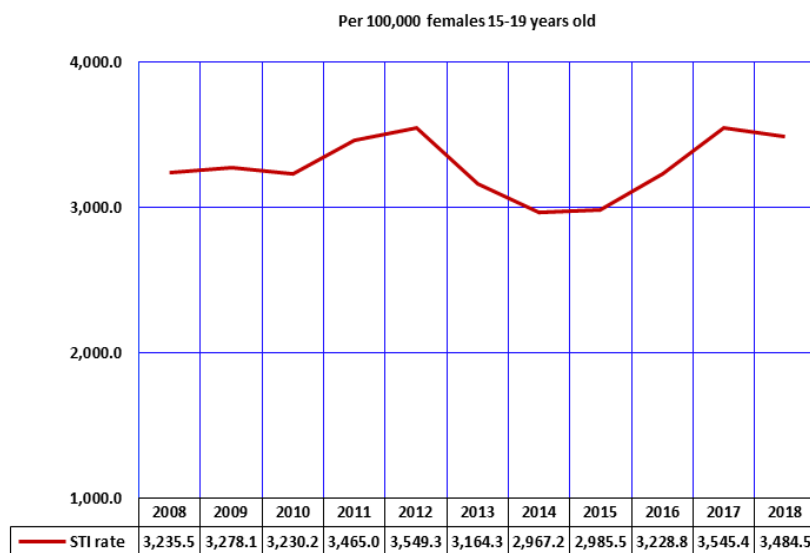
KEY FINDINGS

**Figure 13**  
**Number of Births to Mothers 19 or Younger by Payer, Arizona, 2008 and 2018**



The total number of births to mothers 19 years or younger decreased by 61.7 percent from 12,161 in 2008 to 4,659 in 2018 (**Table 1**). In contrast, the proportional share of births paid for by the Arizona Health Care Cost Containment System (AHCCCS, the State’s Medicaid program) increased from 81.6 percent in 2008 to 82.3 percent in 2018 (**Figure 13**).

**Figure 14**  
**Trends in the Incidence of Sexually Transmitted Infections\* among Females 15-19 Years, Arizona, 2008-2018**



In each year from 2008 to 2012, the total number of sexually transmitted infections (STI) among females aged 19 or younger exceeded 7,300, but fell to 6,723 in 2014, then increased to 8,222 in 2018 (**Table 15**). Among females 15-19 years, the rate of 2018 was lower than 2017, and 7.7 percent higher than the rate of 2008.

These STIs are a significant public health concern. *Chlamydia* can cause sterility in the affected mother as well as eye infections and pneumonia in the newborn. The complications of *Syphilis* are not to be underestimated as the disease can lead to blindness and maternal and/or infant death.

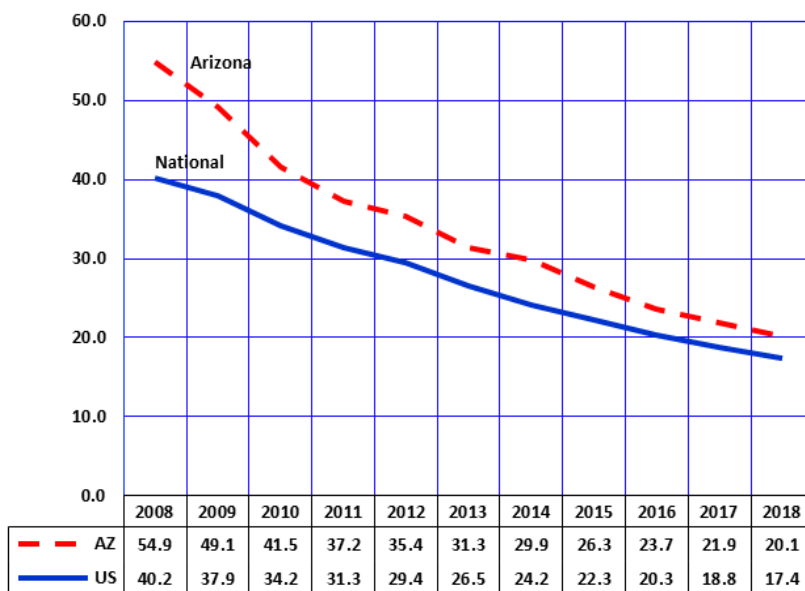
Note: \* The sum of annually reported cases of gonorrhea, chlamydia, and early syphilis.  
 Source: Bureau of Epidemiology and Disease Control Services, Office of Infectious Disease Services.

KEY FINDINGS

**Figure 15**  
**Birth Rates for Teenagers 15-19 Years, Nationally and in Arizona, 2008-2018**

In each year from 2008 to 2018, birth rates for Arizona teenagers 15-19 years old exceeded the rates of their national peers (**Figure 15, Table 11**).

In Arizona, Hispanic or Latino females 15-19 years old, a high-fertility group, accounted for 28.0 percent of females aged 15-19 years in 2018. A high proportional representation of Hispanic or Latino females in Arizona puts upward pressure on the overall teen birth rate.

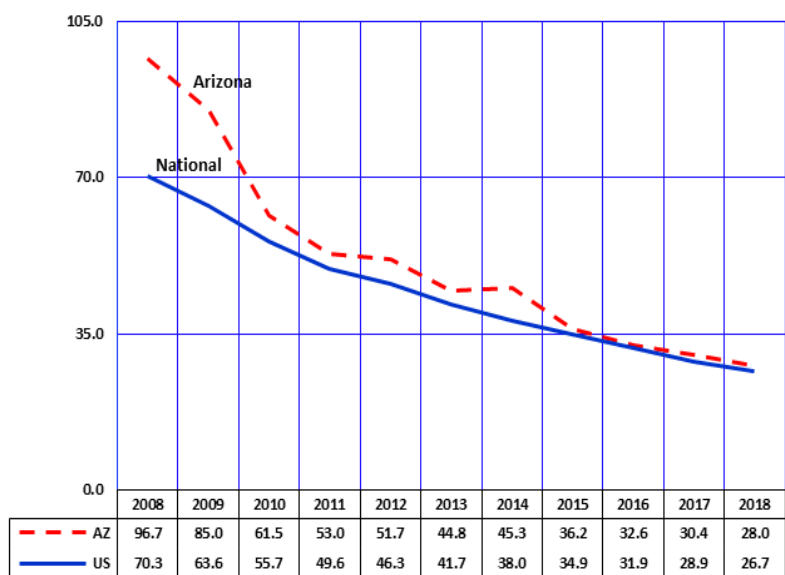


Note: The number of births per 1,000 females 15-19 years old.

**Figure 16**  
**Birth Rates for Hispanic or Latino Teenagers 15-19 Years, Nationally, and in Arizona, 2008-2018**

In 2018, Hispanics or Latino teens aged 15-19 years disproportionately accounted for 59.6 percent of births to mothers in this age group in Arizona (2,777 out of 4,659; see **Table 6** and **Table 7**).

Historically the birth rates among Hispanic or Latino teenagers have been higher in Arizona than nationally.



Notes: The number of births per 1,000 females 15-19 years old; the U.S. birth rate for Hispanic teens 15-19 years was not available at the time of the preparation of this report.

**TEENAGE PREGNANCY, ARIZONA, 2008-2018**

# **DATA TABLES**

**TABLE 1  
PREGNANCIES AND PREGNANCY OUTCOME BY AGE GROUP AND YEAR,  
FEMALES 19 OR YOUNGER, ARIZONA, 2008-2018**

Pregnancy outcome by year	Total, females 19 years or younger	10-14 years	15-19 years old		
			Total, 15-19 years	15-17 years	18-19 years
<b>ALL PREGNANCIES</b>					
2008	14,047	230	13,817	4,740	9,077
2009	12,537	156	12,381	3,945	8,436
2010	10,980	150	10,830	3,363	7,467
2011	10,269	150	10,119	2,939	7,180
2012	9,710	116	9,594	2,860	6,734
2013	8,715	91	8,624	2,385	6,239
2014	7,924	68	7,856	2,125	5,731
2015	7,121	66	7,055	1,887	5,168
2016	6,724	85	6,639	1,707	4,932
2017	6,252	65	6,187	1,554	4,633
2018	5,829	57	5,772	1,491	4,281
<b>LIVE BIRTHS</b>					
2008	12,161	161	12,000	4,151	7,849
2009	10,952	132	10,820	3,501	7,319
2010	9,416	105	9,311	2,910	6,401
2011	8,435	101	8,334	2,447	5,887
2012	8,117	67	8,050	2,430	5,620
2013	7,222	71	7,151	1,985	5,166
2014	6,623	46	6,577	1,770	4,807
2015	5,884	41	5,843	1,582	4,261
2016	5,390	54	5,336	1,420	3,916
2017	5,041	36	5,005	1,280	3,725
2018	4,659	29	4,630	1,212	3,418
<b>ABORTIONS</b>					
2008	1,813	67	1,746	567	1,179
2009	1,519	24	1,495	418	1,077
2010	1,512	44	1,468	435	1,033
2011	1,785	49	1,736	478	1,258
2012	1,539	48	1,491	414	1,077
2013	1,441	20	1,421	382	1,039
2014	1,249	22	1,227	330	897
2015	1,189	25	1,164	287	877
2016	1,297	31	1,266	277	989
2017	1,179	29	1,150	267	883
2018	1,146	28	1,118	271	847
<b>FETAL LOSSES</b>					
2008	70 <sup>†</sup>	*	71	22	49
2009	66	0	66	26	40
2010	50 <sup>†</sup>	*	51	18	33
2011	49	0	49	14	35
2012	50 <sup>†</sup>	*	53	16	37
2013	52	0	52	18	34
2014	52	0	52	25	27
2015	48	0	48	18	30
2016	37	0	37	10	27
2017	32	0	32	7	25
2018	24	0	24	8	16

Notes: \* Cell suppressed due to non-zero count less than 6; <sup>†</sup> Sum rounded to nearest tens unit due to non-zero addend less than 6.

**TABLE 2**  
**PREGNANCY RATES<sup>a</sup> BY PREGNANCY OUTCOME, AGE GROUP, AND YEAR,**  
**FEMALES 19 OR YOUNGER, ARIZONA, 2008-2018**

Pregnancy outcome by year	Total, females 19 years or younger	10-14 years	15-19 years old		
			Total, 15-19 years	15-17 years	18-19 years
<b>ALL PREGNANCIES</b>					
2008	31.6	1.0	63.2	34.6	111.3
2009	28.0	0.7	56.1	28.5	102.5
2010	24.7	0.7	48.3	25.5	80.8
2011	23.0	0.7	44.8	22.1	77.2
2012	21.6	0.5	42.2	21.8	70.2
2013	19.2	0.4	37.7	18.0	64.8
2014	17.8	0.3	35.7	16.1	65.2
2015	15.9	0.3	31.8	14.1	58.4
2016	14.9	0.4	29.5	12.6	55.0
2017	13.7	0.3	27.1	11.3	50.9
2018	12.6	0.2	25.1	10.8	46.6
<b>LIVE BIRTHS</b>					
2008	27.4	0.7	54.9	30.3	96.3
2009	24.4	0.6	49.1	25.3	89.0
2010	21.2	0.5	41.5	22.1	69.2
2011	19.0	0.5	37.2	18.6	63.7
2012	18.0	0.3	35.4	18.5	58.6
2013	15.9	0.3	31.3	15.0	53.6
2014	14.9	0.2	29.9	13.4	54.7
2015	13.1	0.2	26.3	11.8	48.2
2016	12.0	0.2	23.7	10.5	43.7
2017	11.1	0.2	21.9	9.3	41.0
2018	10.1	0.1	20.1	8.8	37.2
<b>ABORTIONS</b>					
2008	4.1	0.3	8.0	4.1	14.5
2009	3.4	0.1	6.8	3.0	13.1
2010	3.4	0.2	6.5	3.3	11.2
2011	4.0	0.2	7.7	3.6	13.5
2012	3.4	0.2	6.6	3.1	11.2
2013	3.2	0.1	6.2	2.9	10.8
2014	2.8	0.1	5.6	2.5	10.2
2015	2.7	0.1	5.2	2.1	9.9
2016	2.9	0.1	5.6	2.0	11.0
2017	2.6	0.1	5.0	1.9	9.7
2018	2.5	0.1	4.9	2.0	9.2
<b>FETAL LOSSES</b>					
2008	0.2	**	0.3	0.2	0.6
2009	0.2	0.0	0.3	0.2	0.5
2010	0.1	**	0.2	0.1	0.4
2011	0.1	0.0	0.2	0.1	0.4
2012	0.1	**	0.2	0.1	0.4
2013	0.1	0.0	0.2	0.1	0.4
2014	0.1	0.0	0.2	0.2	0.3
2015	0.1	0.0	0.2	0.1	0.3
2016	0.1	0.0	0.2	0.1	0.3
2017	0.1	0.0	0.1	0.1	0.3
2018	0.1	0.0	0.1	0.1	0.2

Notes: \*\* Cell suppressed due to rate/ratio/percent based on non-zero count less than 6; <sup>a</sup> The number of pregnancies (live births + abortions + fetal deaths) per 1,000 females in specified age group; 0.0: Quantity more than zero but less than 0.05.

**TABLE 3  
LIVE BIRTHS TO FEMALES 19 OR YOUNGER BY AGE GROUP, RACE/ETHNICITY,  
AND YEAR, ARIZONA, 2008-2018**

Racial/ethnic group and year	Total, females 19 years or younger	10-14 years	15-19 years old		
			Total, 15-19 years	15-17 years	18-19 years
<b>WHITE NON-HISPANIC</b>					
2008	2,993	15	2,978	769	2,209
2009	2,715	20	2,695	649	2,046
2010	2,386	12	2,374	541	1,833
2011	2,089	13	2,076	494	1,582
2012	1,977	8	1,969	475	1,494
2013	1,781	8	1,773	365	1,408
2014	1,757	8	1,749	344	1,405
2015	1,530†	*	1,526	339	1,187
2016	1,347	8	1,339	283	1,056
2017	1,160†	*	1,163	224	939
2018	1,090†	*	1,085	213	872
<b>HISPANIC OR LATINO</b>					
2008	7,168	111	7,057	2,724	4,333
2009	6,341	87	6,254	2,253	4,001
2010	5,348	68	5,280	1,859	3,421
2011	4,631	61	4,570	1,467	3,103
2012	4,627	46	4,581	1,528	3,053
2013	4,080	47	4,033	1,244	2,789
2014	3,813	23	3,790	1,115	2,675
2015	3,409	28	3,381	972	2,409
2016	3,136	32	3,104	877	2,227
2017	2,974	21	2,953	816	2,137
2018	2,794	17	2,777	795	1,982
<b>BLACK OR AFRICAN AMERICAN</b>					
2008	656	12	644	203	441
2009	603	6	597	181	416
2010	562	10	552	151	401
2011	561	10	551	152	399
2012	540†	*	539	159	380
2013	507	6	501	122	379
2014	390†	*	389	102	287
2015	310†	*	311	77	234
2016	320†	*	313	81	232
2017	330†	*	324	71	253
2018	270†	*	270	60	210
<b>AMERICAN INDIAN OR ALASKA NATIVE</b>					
2008	1,185	22	1,163	408	755
2009	1,170	17	1,153	394	759
2010	988	14	974	331	643
2011	987	14	973	293	680
2012	890	7	883	251	632
2013	775	8	767	243	524
2014	602	9	593	196	397
2015	569	7	562	177	385
2016	540	11	529	167	362
2017	519	8	511	163	348
2018	463	7	456	134	322
<b>ASIAN OR PACIFIC ISLANDER</b>					
2008	110†	*	112	26	86
2009	90†	*	86	18	68
2010	100†	*	102	23	79
2011	110†	*	109	26	83
2012	80†	*	78	17	61
2013	80†	*	77	11	66
2014	60†	*	56	13	43
2015	63	0	63	17	46
2016	51	0	51	12	39
2017	60†	*	54	6	48
2018	42	0	42	10	32

Notes: \* Cell suppressed due to non-zero count less than 6; † Sum rounded to nearest tens unit due to non-zero addend less than 6.

**TABLE 4  
ABORTIONS TO FEMALES 19 OR YOUNGER BY AGE GROUP, RACE/ETHNICITY,  
AND YEAR, ARIZONA, 2008-2018**

Racial/ethnic group and year	Total, females 19 years or younger	10-14 years	15-19 years old		
			Total, 15-19 years	15-17 years	18-19 years
<b>WHITE NON-HISPANIC</b>					
2008	841	21	820	266	554
2009	720	11	709	207	502
2010	694	16	678	198	480
2011	289	10	279	80	199
2012	238	6	232	65	167
2013	257	6	251	66	185
2014	488	7	481	133	348
2015	488	6	482	111	371
2016	476	11	465	96	369
2017	400	7	393	93	300
2018	396	11	385	93	292
<b>HISPANIC OR LATINO</b>					
2008	561	34	527	173	354
2009	525	8	517	136	381
2010	532	16	516	151	365
2011	638	17	621	179	442
2012	441	12	429	138	291
2013	509	6	503	136	367
2014	531	7	524	134	390
2015	467	13	454	118	336
2016	564	8	556	131	425
2017	526	19	507	117	390
2018	528	11	517	128	389
<b>BLACK OR AFRICAN AMERICAN</b>					
2008	140†	*	138	43	95
2009	110†	*	107	28	79
2010	70†	*	66	24	42
2011	17	0	20†	*	13
2012	10†	*	10†	6	*
2013	20†	*	22	8	14
2014	90†	*	88	34	54
2015	90†	*	83	25	58
2016	110†	*	109	23	86
2017	120†	*	116	33	83
2018	100†	*	93	28	65
<b>AMERICAN INDIAN OR ALASKA NATIVE</b>					
2008	50†	*	52	17	35
2009	52	0	52	22	30
2010	40†	*	34	13	21
2011	10†	0	10†	*	*
2012	0†	0	0†	*	*
2013	8	0	10†	*	*
2014	30†	*	20†	*	18
2015	50†	*	47	13	34
2016	40†	*	36	11	25
2017	20†	*	20†	*	18
2018	30†	*	30†	*	25
<b>ASIAN OR PACIFIC ISLANDER</b>					
2008	40†	*	34	12	22
2009	40†	*	39	8	31
2010	14	0	10†	*	9
2011	10†	*	0†	0	*
2012	9	0	10†	*	7
2013	0†	0	0†	*	*
2014	40†	*	34	10	24
2015	28	0	30†	*	25
2016	30†	*	30†	*	22
2017	34	0	30†	*	31
2018	30†	*	30†	*	30

Notes: \* Cell suppressed due to non-zero count less than 6; † Sum rounded to nearest tens unit due to non-zero addend less than 6.

**TABLE 5  
NUMBER OF PREGNANCIES<sup>a</sup> BY PREGNANCY OUTCOME, RACE/ETHNICITY, AND YEAR AMONG FEMALES AGED 17 AND YOUNGER  
WITH RATES<sup>b</sup>, ARIZONA, 2008-2018**

Race/ethnicity Pregnancy outcome	2008	2009	2010	2011	2012	2013	2014	2015	2016	2017	2018	2018 Rates
<b>WHITE<sup>c</sup> NON-HISPANIC, total:</b>	1,074	894	770	600	564	448	496	462	401	327	325	<b>2.1</b>
Births	784	669	553	507	483	373	352	344	291	225	217	<b>1.4</b>
Abortions	287	218	214	90	71	72	140	117	107	100	104	<b>0.7</b>
<b>HISPANIC OR LATINO, total:</b>	3,057	2,496	2,106	1,731	1,728	1,443	1,292	1,144	1,055	976	953	<b>5.9</b>
Births	2,835	2,340	1,927	1,528	1,574	1,291	1,138	1,000	909	837	812	<b>5.0</b>
Abortions	207	144	167	196	150	142	141	131	139	136	139	<b>0.9</b>
<b>BLACK OR AFRICAN AMERICAN, total:</b>	266	221	189	170 <sup>†</sup>	174	140	145	106	111	111	94	<b>4.5</b>
Births	215	187	161	162	164	128	107	78	84	76	61	<b>2.9</b>
Abortions	48	31	25	*	9	9	36	27	27	34	31	<b>1.5</b>
<b>AMERICAN INDIAN OR ALASKA NATIVE, total:</b>	452	436	361	310 <sup>†</sup>	260 <sup>†</sup>	260 <sup>†</sup>	217	204	191	180 <sup>†</sup>	147	<b>7.6</b>
Births	430	411	345	307	258	251	205	184	178	171	141	<b>7.3</b>
Abortions	19	22	15	*	*	*	7	17	13	*	6	<b>0.3</b>
<b>ASIAN OR PACIFIC ISLANDER, total:</b>	41	30	30 <sup>†</sup>	30 <sup>†</sup>	20 <sup>†</sup>	20 <sup>†</sup>	25	20 <sup>†</sup>	20 <sup>†</sup>	10 <sup>†</sup>	10 <sup>†</sup>	<b>0.9</b>
Births	27	20	24	28	18	13	14	17	12	7	10	<b>0.8</b>
Abortions	14	9	*	*	*	*	11	*	*	*	*	<b>**</b>
<b>ALL RACIAL/ETHNIC GROUPS<sup>d</sup>, total:</b>	4,970	4,101	3,513	3,089	2,976	2,476	2,193	1,953	1,792	1,619	1,548	<b>4.2</b>
Births	4,312	3,633	3,015	2,548	2,497	2,056	1,816	1,623	1,474	1,316	1,241	<b>3.4</b>
Abortions	634	442	479	527	463	402	352	312	308	296	299	<b>0.8</b>
<b>Pregnancy rate, total:</b>	<b>13.7</b>	<b>11.2</b>	<b>10.0</b>	<b>8.7</b>	<b>8.4</b>	<b>6.9</b>	<b>6.1</b>	<b>5.4</b>	<b>5.0</b>	<b>4.4</b>	<b>4.2</b>	
<b>Fertility rate<sup>e</sup></b>	<b>11.9</b>	<b>9.9</b>	<b>8.6</b>	<b>7.2</b>	<b>7.1</b>	<b>5.8</b>	<b>5.1</b>	<b>4.5</b>	<b>4.1</b>	<b>3.6</b>	<b>3.4</b>	
<b>Abortion rate</b>	<b>1.7</b>	<b>1.2</b>	<b>1.4</b>	<b>1.5</b>	<b>1.3</b>	<b>1.1</b>	<b>1.0</b>	<b>0.9</b>	<b>0.9</b>	<b>0.8</b>	<b>0.8</b>	

Notes: \* Cell suppressed due to non-zero count less than 6; \*\* Cell suppressed due to rate/ratio/percent based on non-zero count less than 6; <sup>†</sup> Sum rounded to nearest tens unit due to non-zero addend less than 6; <sup>‡</sup> Fetal deaths are included in the total counts of pregnancies; <sup>b</sup> All rates per 1,000 females 10-17 years old; <sup>c</sup> Not of Hispanic origin; <sup>d</sup> Includes other and unspecified ethnicity; <sup>e</sup> Number of births per 1,000 females 10-17 years old.



**TABLE 6  
NUMBER OF PREGNANCIES<sup>a</sup> BY PREGNANCY OUTCOME, RACE/ETHNICITY, AND YEAR AMONG FEMALES 15-17 YEARS OLD  
WITH RATES<sup>b</sup>, ARIZONA, 2008-2018**

Race/ethnicity Pregnancy outcome	2008	2009	2010	2011	2012	2013	2014	2015	2016	2017	2018	2018 Rates
<b>WHITE<sup>c</sup> NON-HISPANIC, total:</b>	1,038	863	742	577	549	434	481	451	382	319	310	<b>5.3</b>
Births	769	649	541	494	475	365	344	339	283	224	213	<b>3.6</b>
Abortions	266	207	198	80	65	66	133	111	96	93	93	<b>1.6</b>
<b>HISPANIC OR LATINO, total:</b>	2,911	2,401	2,021	1,653	1,670	1,390	1,262	1,103	1,015	936	925	<b>15.4</b>
Births	2,724	2,253	1,859	1,467	1,528	1,244	1,115	972	877	816	795	<b>13.3</b>
Abortions	173	136	151	179	138	136	134	118	131	117	128	<b>2.1</b>
<b>BLACK OR AFRICAN AMERICAN, total:</b>	248	212	178	160 <sup>†</sup>	166	133	138	103	104	105	90	<b>11.6</b>
Births	203	181	151	152	159	122	102	77	81	71	60	<b>7.7</b>
Abortions	43	28	24	*	6	8	34	25	23	33	28	<b>3.6</b>
<b>AMERICAN INDIAN OR ALASKA NATIVE, total:</b>	428	419	345	300 <sup>†</sup>	250 <sup>†</sup>	250 <sup>†</sup>	210 <sup>†</sup>	193	178	170 <sup>†</sup>	140 <sup>†</sup>	<b>19.8</b>
Births	408	394	331	293	251	243	196	177	167	163	134	<b>19.1</b>
Abortions	17	22	13	*	*	*	*	13	11	*	*	<b>**</b>
<b>ASIAN OR PACIFIC ISLANDER, total:</b>	38	30 <sup>†</sup>	30 <sup>†</sup>	26	20 <sup>†</sup>	10 <sup>†</sup>	23	20 <sup>†</sup>	20 <sup>†</sup>	10 <sup>†</sup>	10 <sup>†</sup>	<b>2.3</b>
Births	26	18	23	26	17	11	13	17	12	6	10	<b>2.1</b>
Abortions	12	*	*	0	*	*	10	*	*	*	*	<b>**</b>
<b>ALL RACIAL/ETHNIC GROUPS<sup>d</sup>, total:</b>	4,740	3,945	3,363	2,939	2,860	2,385	2,125	1,887	1,707	1,554	1,491	<b>10.8</b>
Births	4,151	3,501	2,910	2,447	2,430	1,985	1,770	1,582	1,420	1,280	1,212	<b>8.8</b>
Abortions	567	418	435	478	414	382	330	287	277	267	271	<b>2.0</b>
<b>Pregnancy rate, total:</b>	<b>34.6</b>	<b>28.5</b>	<b>25.5</b>	<b>22.1</b>	<b>21.8</b>	<b>18.0</b>	<b>16.1</b>	<b>14.1</b>	<b>12.6</b>	<b>11.3</b>	<b>10.8</b>	
<b>Fertility rate<sup>e</sup></b>	<b>30.3</b>	<b>25.3</b>	<b>22.1</b>	<b>18.4</b>	<b>18.5</b>	<b>15.0</b>	<b>13.4</b>	<b>11.8</b>	<b>10.5</b>	<b>9.3</b>	<b>8.8</b>	
<b>Abortion rate</b>	<b>4.1</b>	<b>3.0</b>	<b>3.3</b>	<b>3.6</b>	<b>3.1</b>	<b>2.9</b>	<b>2.5</b>	<b>2.1</b>	<b>2.0</b>	<b>1.9</b>	<b>2.0</b>	

Notes: \* Cell suppressed due to non-zero count less than 6; \*\* Cell suppressed due to rate/ratio/percent based on non-zero count less than 6; <sup>†</sup> Sum rounded to nearest tens unit due to non-zero addend less than 6; <sup>‡</sup> Fetal deaths are included in the total counts of pregnancies; <sup>b</sup> All rates per 1,000 females 15-17 years old; <sup>c</sup> Not of Hispanic origin; <sup>d</sup> Includes other and unspecified ethnicity; <sup>e</sup> Number of births per 1,000 females 15-17 years old.

**TABLE 7  
NUMBER OF PREGNANCIES<sup>a</sup> BY PREGNANCY OUTCOME, RACE/ETHNICITY, AND YEAR AMONG FEMALES 18-19 YEARS OLD  
WITH RATES<sup>b</sup>, ARIZONA, 2008-2018**

Race/ethnicity Pregnancy outcome	2008	2009	2010	2011	2012	2013	2014	2015	2016	2017	2018	2018 Rates
<b>WHITE<sup>c</sup> NON-HISPANIC, total:</b>	2,778	2,560	2,316	1,792	1,675	1,602	1,759	1,562	1,433	1,248	1,170	<b>29.7</b>
Births	2,209	2,046	1,833	1,582	1,494	1,408	1,405	1,187	1,056	939	872	<b>22.1</b>
Abortions	554	502	480	199	167	185	348	371	369	300	292	<b>7.4</b>
<b>HISPANIC OR LATINO, total:</b>	4,707	4,400	3,812	3,566	3,357	3,175	3,078	2,764	2,668	2,537	2,377	<b>60.8</b>
Births	4,333	4,001	3,421	3,103	3,053	2,789	2,675	2,409	2,227	2,137	1,982	<b>50.7</b>
Abortions	354	381	365	442	291	367	390	336	425	390	389	<b>9.9</b>
<b>BLACK OR AFRICAN AMERICAN, total:</b>	546	501	446	413	390 <sup>†</sup>	397	345	294	320	339	278	<b>52.9</b>
Births	441	416	401	399	380	379	287	234	232	253	210	<b>40.0</b>
Abortions	95	79	42	13	*	14	54	58	86	83	65	<b>12.4</b>
<b>AMERICAN INDIAN OR ALASKA NATIVE, total:</b>	794	793	664	690 <sup>†</sup>	640 <sup>†</sup>	530 <sup>†</sup>	417	423	388	369	348	<b>74.1</b>
Births	755	759	643	680	632	524	397	385	362	348	322	<b>68.6</b>
Abortions	35	30	21	*	*	*	18	34	25	18	25	<b>5.3</b>
<b>ASIAN OR PACIFIC ISLANDER, total:</b>	108	99	88	90 <sup>†</sup>	68	70 <sup>†</sup>	67	72	61	79	62	<b>17.8</b>
Births	86	68	79	83	61	66	43	46	39	48	32	<b>9.2</b>
Abortions	22	31	9	*	7	*	24	25	22	31	30	<b>8.6</b>
<b>ALL RACIAL/ETHNIC GROUPS<sup>d</sup>, total:</b>	9,077	8,436	7,467	7,180	6,734	6,239	5,731	5,168	4,932	4,633	4,281	<b>46.6</b>
Births	7,849	7,319	6,401	5,887	5,620	5,166	4,807	4,261	3,916	3,725	3,418	<b>37.2</b>
Abortions	1,179	1,077	1,033	1,258	1,077	1,039	897	877	989	883	847	<b>9.2</b>
<b>Pregnancy rate, total:</b>	<b>111.3</b>	<b>102.5</b>	<b>80.8</b>	<b>77.2</b>	<b>70.2</b>	<b>64.8</b>	<b>65.2</b>	<b>58.4</b>	<b>55.0</b>	<b>50.9</b>	<b>46.6</b>	
<b>Fertility rate<sup>e</sup></b>	<b>96.3</b>	<b>89.0</b>	<b>69.2</b>	<b>63.3</b>	<b>58.6</b>	<b>53.6</b>	<b>54.7</b>	<b>48.2</b>	<b>43.7</b>	<b>41.0</b>	<b>37.2</b>	
<b>Abortion rate</b>	<b>14.5</b>	<b>13.1</b>	<b>11.2</b>	<b>13.5</b>	<b>11.2</b>	<b>10.8</b>	<b>10.2</b>	<b>9.9</b>	<b>11.0</b>	<b>9.7</b>	<b>9.2</b>	

Notes: \* Cell suppressed due to non-zero count less than 6; <sup>†</sup> Sum rounded to nearest tens unit due to non-zero addend less than 6; <sup>a</sup> Fetal deaths are included in the total counts of pregnancies; <sup>b</sup> All rates per 1,000 females 18-19 years old; <sup>c</sup> Not of Hispanic origin; <sup>d</sup> Includes other and unspecified ethnicity; <sup>e</sup> Number of births per 1,000 females 18-19 years old.

**TABLE 8  
NUMBER OF PREGNANCIES<sup>a</sup> BY PREGNANCY OUTCOME, RACE/ETHNICITY, AND YEAR AMONG FEMALES 19 AND YOUNGER,  
WITH RATES<sup>b</sup>, ARIZONA, 2008-2018**

Race/ethnicity Pregnancy outcome	2008	2009	2010	2011	2012	2013	2014	2015	2016	2017	2018	2018 Rates
<b>WHITE<sup>c</sup> NON-HISPANIC, total:</b>	3,852	3,454	3,086	2,392	2,239	2,050	2,255	2,024	1,834	1,575	1,495	<b>7.7</b>
Births	2,993	2,715	2,386	2,089	1,977	1,781	1,757	1,531	1,347	1,164	1,089	<b>5.6</b>
Abortions	841	720	694	289	238	257	488	488	476	400	396	<b>2.1</b>
<b>HISPANIC OR LATINO, total:</b>	7,764	6,896	5,918	5,297	5,085	4,618	4,370	3,908	3,723	3,513	3,330	<b>16.5</b>
Births	7,168	6,341	5,348	4,631	4,627	4,080	3,813	3,409	3,136	2,974	2,794	<b>13.9</b>
Abortions	561	525	532	638	441	509	531	467	564	526	528	<b>2.6</b>
<b>BLACK OR AFRICAN AMERICAN, total:</b>	812	722	635	580	562	537	490	400	431	450	372	<b>14.3</b>
Births	656	603	562	561	544	507	394	312	316	329	271	<b>10.4</b>
Abortions	143	110	67	17	14	23	90	85	113	117	96	<b>3.7</b>
<b>AMERICAN INDIAN OR ALASKA NATIVE, total:</b>	1,246	1,229	1,025	1,000 <sup>†</sup>	900 <sup>†</sup>	787	634	627	579	546	495	<b>20.6</b>
Births	1,185	1,170	988	987	890	775	602	569	540	519	463	<b>19.2</b>
Abortions	54	52	36	*	*	8	25	51	38	23	31	<b>1.3</b>
<b>ASIAN OR PACIFIC ISLANDER, total:</b>	149	129	117	120 <sup>†</sup>	88	80 <sup>†</sup>	92	92	77	89	74	<b>4.6</b>
Births	113	88	103	111	79	79	57	63	51	55	42	<b>2.6</b>
Abortions	36	40	14	*	9	*	35	28	26	34	32	<b>2.0</b>
<b>ALL RACIAL/ETHNIC GROUPS<sup>d</sup>, total:</b>	14,047	12,537	10,980	10,269	9,710	8,715	7,924	7,121	6,724	6,252	5,829	<b>12.6</b>
Births	12,161	10,952	9,416	8,435	8,117	7,222	6,623	5,884	5,390	5,041	4,659	<b>10.1</b>
Abortions	1,813	1,519	1,512	1,785	1,539	1,441	1,249	1,189	1,297	1,179	1,146	<b>2.5</b>
<b>Pregnancy rate, total:</b>	<b>31.6</b>	<b>28.0</b>	<b>24.7</b>	<b>23.0</b>	<b>21.6</b>	<b>19.2</b>	<b>17.8</b>	<b>15.9</b>	<b>14.9</b>	<b>13.7</b>	<b>12.6</b>	
<b>Fertility rate<sup>e</sup></b>	<b>27.4</b>	<b>24.4</b>	<b>21.2</b>	<b>18.9</b>	<b>18.0</b>	<b>15.9</b>	<b>14.9</b>	<b>13.1</b>	<b>12.0</b>	<b>11.1</b>	<b>10.1</b>	
<b>Abortion rate</b>	<b>4.1</b>	<b>3.4</b>	<b>3.4</b>	<b>4.0</b>	<b>3.4</b>	<b>3.2</b>	<b>2.8</b>	<b>2.7</b>	<b>2.9</b>	<b>2.6</b>	<b>2.5</b>	

Notes: \* Cell suppressed due to non-zero count less than 6; <sup>†</sup> Sum rounded to nearest tens unit due to non-zero addend less than 6; <sup>a</sup> Fetal deaths are included in the total counts of pregnancies; <sup>b</sup> All rates per 1,000 females 19 or younger; <sup>c</sup> Not of Hispanic origin; <sup>d</sup> Includes other and unspecified ethnicity; <sup>e</sup> Number of births per 1,000 females 19 or younger.

**TABLE 9  
TRENDS IN PREGNANCY RATES<sup>a</sup> BY COUNTY OF RESIDENCE AMONG FEMALES 10-17 AND 18-19 YEARS OLD,  
ARIZONA, 2008-2018**

	ARIZONA	APACHE	COCHISE	COCONINO	GILA	GRAHAM	GREENLEE	LA PAZ	MARICOPA	MOHAVE	NAVAJO	PIMA	PINAL	SANTA CRUZ	YAVAPAI	YUMA
<b>2008</b>	31.6	25.3	27.2	28.6	45.9	33.2	33.2	38.6	32.5	28.1	36.3	29.0	31.3	31.5	26.9	35.1
<b>2009</b>	28.0	27.7	28.7	27.6	40.8	33.7	41.2	27.8	27.4	25.9	33.2	27.0	27.6	29.1	25.0	36.1
<b>2010</b>	24.7	26.7	27.5	22.5	39.7	33.3	35.7	38.1	23.7	24.6	32.8	24.7	22.8	30.5	21.4	34.1
<b>2011</b>	23.0	23.6	24.7	20.3	35.9	28.5	34.1	31.9	22.4	18.9	33.4	22.6	21.7	27.9	19.9	30.1
<b>2012</b>	21.6	21.6	24.0	18.0	29.9	29.2	18.9	25.3	20.7	19.2	29.8	21.4	20.6	29.0	18.7	29.0
<b>2013</b>	19.2	19.1	18.9	16.2	32.0	26.7	28.8	37.6	18.4	15.8	23.3	19.2	16.4	20.6	16.7	25.1
<b>2014</b>	17.8	17.7	18.4	14.7	29.0	27.1	26.8	33.4	17.4	17.5	21.8	16.9	15.5	20.0	17.2	19.7
<b>2015</b>	15.9	13.7	20.0	14.4	25.6	23.7	20.5	22.9	15.3	14.7	21.4	15.0	15.1	13.6	16.4	18.2
<b>2016</b>	14.9	17.2	18.8	13.0	31.3	18.2	21.5	20.7	14.4	13.5	19.3	14.2	12.9	18.1	13.5	17.5
<b>2017</b>	13.7	15.7	14.3	12.6	22.0	16.6	15.3	18.0	13.2	13.6	19.5	13.1	13.5	12.7	15.1	13.9
<b>2018</b>	12.6	13.0	14.4	9.2	21.6	17.6	11.0	20.2	11.9	11.2	16.2	11.6	12.4	11.9	13.3	17.7
<b>2008</b>	111.3	89.5	92.4	72.2	165.9	94.7	133.3	156.1	120.0	135.7	135.7	86.5	121.8	111.6	100.1	121.7
<b>2009</b>	102.5	100.2	102.7	68.9	160.2	93.2	203.9	127.2	106.0	129.2	132.3	82.3	108.4	115.7	101.3	119.9
<b>2010</b>	80.8	96.6	90.6	40.2	137.9	96.0	122.4	177.8	80.3	96.5	122.7	68.7	96.8	94.2	84.5	114.7
<b>2011</b>	77.2	94.2	78.9	36.2	132.6	81.7	163.3	127.8	78.4	75.9	121.1	64.3	94.7	104.2	71.3	109.3
<b>2012</b>	70.2	79.6	80.2	33.4	105.8	95.2	64.7	87.7	69.3	69.6	115.7	61.9	82.2	97.9	64.6	90.1
<b>2013</b>	64.8	68.5	65.2	30.8	133.0	103.2	108.8	146.1	64.2	59.4	92.9	54.6	67.7	92.4	62.2	83.0
<b>2014</b>	65.2	66.4	66.7	25.8	114.8	108.7	142.9	126.4	68.3	79.5	81.0	48.7	70.8	66.9	75.5	72.0
<b>2015</b>	58.4	43.9	77.0	25.9	105.7	95.0	86.2	77.3	59.5	67.9	78.9	45.9	71.4	50.9	64.5	69.9
<b>2016</b>	55.0	68.1	73.0	21.3	114.2	70.6	84.5	94.9	56.4	63.2	70.2	43.5	58.9	69.3	55.1	63.1
<b>2017</b>	50.9	62.1	55.4	22.6	97.0	61.5	67.2	80.5	51.7	67.4	76.3	39.1	64.0	61.0	61.3	50.3
<b>2018</b>	46.6	58.2	56.6	14.9	84.3	60.8	46.9	80.0	46.5	52.5	64.4	35.3	55.2	53.1	52.8	63.3
<b>2008</b>	13.7	9.7	11.3	13.2	21.0	12.9	16.2	17.0	14.3	9.5	15.5	12.5	13.6	15.0	10.9	14.6
<b>2009</b>	11.2	10.1	10.8	13.0	15.9	14.2	13.3	9.5	11.0	8.1	12.5	11.2	11.8	11.4	8.4	16.1
<b>2010</b>	10.0	11.0	10.8	11.5	18.1	11.9	19.3	**	9.5	8.1	12.5	10.3	8.6	17.1	6.6	14.9
<b>2011</b>	8.7	7.8	10.4	10.6	14.6	10.3	**	10.1	8.4	5.8	13.6	9.0	7.7	11.9	7.8	11.2
<b>2012</b>	8.4	7.7	9.2	8.3	11.7	12.2	**	8.9	8.1	6.3	10.4	8.0	7.2	15.0	7.4	12.6
<b>2013</b>	6.9	8.1	6.9	7.3	10.7	10.0	10.8	12.8	6.6	4.4	7.1	7.4	5.3	7.7	5.4	10.1
<b>2014</b>	6.1	6.0	6.4	7.1	9.9	9.5	**	11.6	5.9	4.8	8.8	6.6	5.1	9.1	4.3	6.7
<b>2015</b>	5.4	6.8	6.3	6.2	9.5	8.1	**	10.3	5.2	3.9	9.7	5.2	4.7	5.2	5.3	5.7
<b>2016</b>	5.0	6.5	6.3	6.9	13.7	6.4	**	**	4.6	3.4	8.8	4.8	4.3	6.9	3.8	6.7
<b>2017</b>	4.4	6.1	5.0	5.2	5.9	6.7	**	**	4.1	3.0	8.1	4.9	3.8	2.3	4.1	5.2
<b>2018</b>	4.2	3.1	4.6	4.9	8.4	7.4	**	**	3.9	2.9	6.6	3.9	3.9	2.7	4.3	7.0

Notes: \*\* Cell suppressed due to rate/ratio/percent based on count less than 6; <sup>a</sup> Number of pregnancies per 1,000 females in specified group.

**TABLE 10  
LIVE BIRTHS TO FEMALES 19 OR YOUNGER AS A PERCENTAGE OF TOTAL LIVE BIRTHS BY AREA, RACE/ETHNICITY,  
AND YEAR, ARIZONA, 2008-2018**

Group	2008	2009	2010	2011	2012	2013	2014	2015	2016	2017	2018
<b>ARIZONA, TOTAL<sup>a</sup></b>											
# Births (all ages)	99,215	92,616	87,053	85,190	85,725	84,963	86,648	85,024	84,404	81,664	80,539
# Births to teenagers	12,161	10,952	9,416	8,535	8,117	7,222	6,623	5,884	5,390	5,041	4,659
% Births to teenagers	12.2	11.8	10.8	10.0	9.5	8.5	7.6	6.9	6.4	6.2	5.8
<b>URBAN COUNTIES<sup>b</sup></b>											
# Births (all ages)	85,263	79,046	74,624	74,040	74,128	73,493	74,677	73,547	72,899	70,780	69,890
# Births to teenagers	10,013	8,867	7,690	6,886	6,697	6,011	5,447	4,856	4,412	4,139	3,860
% Births to teenagers	11.7	11.2	10.3	9.3	9.0	8.2	7.3	6.6	6.1	5.8	5.5
<b>RURAL COUNTIES</b>											
# Births (all ages)	13,952	13,570	12,429	12,150	11,597	11,470	11,955	11,467	11,502	10,873	10,640
# Births to teenagers	2,148	2,085	1,726	1,549	1,420	1,211	1,175	1,028	978	901	799
% Births to teenagers	15.3	15.4	13.9	12.7	12.2	10.6	9.8	9.0	8.5	8.3	7.5
<b>WHITE NON-HISPANIC</b>											
# Births (all ages)	41,925	39,781	38,777	38,294	38,670	38,220	40,097	38,180	37,762	35,685	34,909
# Births to teenagers	2,993	2,715	2,386	2,089	1,977	1,781	1,757	1,531	1,347	1,164	1,089
% Births to teenagers	7.1	6.8	6.2	5.5	5.1	4.7	4.4	4.0	3.6	3.3	3.1
<b>HISPANIC OR LATINO</b>											
# Births (all ages)	42,639	38,362	34,333	32,398	33,146	33,075	33,715	34,264	33,874	33,191	32,995
# Births to teenagers	7,168	6,341	5,348	4,631	4,627	4,080	3,813	3,409	3,136	2,974	2,794
% Births to teenagers	16.8	16.5	15.6	14.3	14.0	12.3	11.3	9.9	9.3	9.0	8.5
<b>BLACK OR AFRICAN AMERICAN</b>											
# Births (all ages)	4,301	4,378	4,328	4,366	4,715	4,726	4,522	4,361	4,388	4,595	4,655
# Births to teenagers	656	603	562	561	544	507	394	312	316	329	271
% Births to teenagers	15.2	13.8	13.0	12.8	11.5	8.7	8.7	7.2	7.2	7.2	5.8
<b>AMERICAN INDIAN OR ALASKA NATIVE</b>											
# Births (all ages)	6,362	6,170	5,815	5,830	5,569	5,476	5,145	4,984	5,030	4,866	4,709
# Births to teenagers	1,185	1,170	988	987	890	775	602	569	540	519	463
% Births to teenagers	18.6	19.0	17.0	16.9	16.0	14.2	11.7	11.4	10.7	10.7	9.8
<b>ASIAN OR PACIFIC ISLANDER</b>											
# Births (all ages)	3,425	3,396	3,293	3,505	3,625	3,466	3,169	3,235	3,350	3,327	3,271
# Births to teenagers	113	88	103	111	79	79	57	63	51	55	42
% Births to teenagers	3.2	2.6	3.1	3.2	2.2	2.3	1.8	1.9	1.5	1.7	1.3

Notes: <sup>a</sup> Includes records for ethnic groups other than White Non-Hispanic, Hispanic or Latino, Black or African American, American Indian or Alaska Native, or Asian or Pacific Islander; <sup>b</sup> Urban = Maricopa, Pima, Pinal, and Yuma. The remaining counties comprise Arizona's rural areas.

**TABLE 11  
BIRTH RATES BY AGE GROUP FOR FEMALES 19 OR YOUNGER,  
ARIZONA, AND UNITED STATES, 2008-2018**

Year	10-14 years		15 - 19 years old					
			Total		15-17 years		18-19 years	
	AZ	U.S.	AZ	U.S.	AZ	U.S.	AZ	U.S.
<b>2008</b>	0.7	0.6	54.9	40.2	30.3	21.1	96.3	68.2
<b>2009</b>	0.6	0.5	49.1	37.9	25.3	19.6	89.0	64.0
<b>2010</b>	0.5	0.4	41.5	34.2	22.1	17.3	69.2	58.2
<b>2011</b>	0.5	0.4	37.2	31.3	18.6	15.4	63.7	54.1
<b>2012</b>	0.3	0.4	35.4	29.4	18.5	14.1	58.6	51.4
<b>2013</b>	0.3	0.3	31.3	26.5	15.0	12.3	53.6	47.1
<b>2014</b>	0.2	0.3	29.9	24.2	13.4	10.9	54.7	43.8
<b>2015</b>	0.2	0.2	26.3	22.3	11.8	9.9	48.2	40.7
<b>2016</b>	0.2	0.2	23.7	20.3	10.5	8.8	43.7	37.5
<b>2017</b>	0.2	0.2	21.9	18.8	9.3	7.9	41.0	35.1
<b>2018</b>	0.1	0.2	20.1	17.4	8.8	7.2	37.2	32.3

Note: The U.S. data is from the National Vital Statistics reports published by the National Center for Health Statistics.

**TABLE 12  
REPEAT PREGNANCIES AMONG TEENAGE MOTHERS GIVING BIRTH BY AGE, AND YEAR, ARIZONA, 2008-2018**

Mother's age	Pregnancies	Year										
		2008	2009	2010	2011	2012	2013	2014	2015	2016	2017	2018
15	<b>Total</b>	570	446	339	249	293	220†	184	193	170†	148	140†
	<b>Previous pregnancies</b>	553	428	317	239	283	217	173	193	163	142	137
	<b>One or more</b>	17	18	22	10	8	*	10	0	*	6	*
16	<b>Unknown</b>	0	0	0	0	*	*	*	0	0	0	0
	<b>Total</b>	1,250	1,107	937	792	774	609	531	472	426	389	375
	<b>Previous pregnancies</b>	1,146	988	848	743	732	571	511	441	403	369	355
17	<b>One or more</b>	104	119	89	49	42	38	20	31	22	19	20
	<b>Unknown</b>	0	0	0	0	0	0	0	0	*	*	0
	<b>Total</b>	2,331	1,948	1,634	1,406	1,363	1,153	1,055	917	827	743	697
18	<b>Previous pregnancies</b>	1,983	1,598	1,343	1,197	1,218	1,022	938	835	750	676	628
	<b>One or more</b>	348	350	291	209	145	129	116	82	77	67	69
	<b>Unknown</b>	0	0	0	0	0	*	*	0	0	0	0
19	<b>Total</b>	3,376	3,078	2,647	2,399	2,281	2,012	1,886	1,620	1,537	1,417	1,294
	<b>Previous pregnancies</b>	2,576	2,226	1,967	1,901	1,845	1,658	1,545	1,365	1,276	1,179	1,111
	<b>One or more</b>	799	851	680	498	434	351	341	255	260	238	183
19	<b>Unknown</b>	*	*	0	0	*	*	0	0	*	0	0
	<b>Total</b>	4,473	4,241	3,754	3,488	3,339	3,154	2,921	2,641	2,379	2,308	2,124
	<b>Previous pregnancies</b>	3,065	2,667	2,459	2,414	2,444	2,376	2,233	2,017	1,873	1,817	1,674
19	<b>One or more</b>	1,407	1,570	1,295	1,074	892	777	687	622	506	490	450
	<b>Unknown</b>	*	*	0	0	*	*	*	*	0	*	0

Notes: \* Cell suppressed due to non-zero count less than 6; † Sum rounded to nearest tens unit due to non-zero addend less than 6.

**TABLE 13  
CUMULATIVE NUMBER OF MOTHERS WHO WERE 19 OR YOUNGER IN ARIZONA IN 2018**

Year Baby Was Born	MOTHER'S AGE WHEN BABY WAS BORN										Mother was 19 or younger in 2018	
	10	11	12	13	14	15	16	17	18	19		
2009	0											0†
2010	0	*										0†
2011	0	0	*									0†
2012	0	0	0	*								10†
2013	0	0	0	0	15	55						70†
2014	0	0	0	0	6	40	184					230
2015	0	0	0	0	*	38	193	472				710†
2016	0	0	0	0	9	44	167	426	827			1,470†
2017	0	0	0	0	6	30	148	389	743	1417		2,733
2018	0	0	0	0	*	24	140	375	697	1294	2124	4,660†
<b>Cumulative number of mothers 19 or younger</b>	<b>0</b>	<b>0†</b>	<b>10†</b>	<b>50†</b>	<b>231</b>	<b>832</b>	<b>1,662</b>	<b>2,267</b>	<b>2,711</b>	<b>2,124</b>	<b>2,124</b>	<b>9,880†</b>

Notes: \* Cell suppressed due to non-zero count less than 6; † Sum rounded to nearest tens unit due to non-zero addend less than 6; The above table focuses on the 2018 cohort of Arizona mothers who were 19 or younger that year. Among them are those who gave birth in 2018 and those who gave birth prior to 2018 and were still 19 or less years old in 2018. The numbers below the main diagonal (and below the stair-like line) represent the number of mothers meeting either one of the above criteria. The last column to the right gives the cumulative total for 2018 by the year the baby was born. For example, from among those girls and adolescents who had their baby in 2010, about 10† remained in their teens in 2018. The bottom row gives the cumulative total by mother's age when the baby was born. For example, among the 9,880† mothers under 20 in Arizona in 2018, around 10† had given birth when 13 years old. Excluded from the cumulative totals and not shown above the main diagonal (and above stair-like line) are the number of mothers who were 19 years old or younger when the baby was born, but who were no longer under the age 20 by 2018. For example, mothers who were 11 years old in 2009 were 20 years old in 2018. The figures in Table 13 are unadjusted for in-and-out migration, as well as mortality of mothers, in the period of 2009-2018. For simplicity, the number of mothers equals the number of babies (i.e., no adjustment was made for multiple birth events).



**TABLE 14  
TRENDS IN TEEN PREGNANCY RATES BY RACE/ETHNICITY AND AGE GROUP,  
ARIZONA, 2008-2018**

	<b>Total, females 19 years or younger</b>	<b>10-14 years</b>	<b>15-19 years</b>	<b>15-17 years</b>	<b>18-19 years</b>
<b>WHITE NON-HISPANIC</b>					
<b>2008</b>	17.5	0.3	34.1	14.9	65.3
<b>2009</b>	15.6	0.3	30.3	12.3	59.6
<b>2010</b>	15.9	0.3	30.5	12.9	53.9
<b>2011</b>	11.8	0.2	22.8	9.6	40.8
<b>2012</b>	10.7	0.1	20.6	9.0	35.6
<b>2013</b>	9.8	0.1	18.9	7.1	34.0
<b>2014</b>	11.6	0.2	23.0	8.2	45.5
<b>2015</b>	10.5	**	20.6	7.7	40.2
<b>2016</b>	9.5	0.2	18.5	6.5	36.4
<b>2017</b>	8.2	**	15.8	5.4	31.5
<b>2018</b>	7.7	**	15.1	5.3	29.7
<b>HISPANIC OR LATINO</b>					
<b>2008</b>	49.4	1.7	104.4	62.7	177.2
<b>2009</b>	43.5	1.1	92.4	51.3	164.2
<b>2010</b>	33.8	0.9	67.9	38.9	112.6
<b>2011</b>	30.2	0.9	60.5	31.8	104.0
<b>2012</b>	28.0	0.6	56.7	31.6	93.8
<b>2013</b>	25.0	0.6	50.7	25.9	87.4
<b>2014</b>	25.4	0.3	51.9	25.2	91.7
<b>2015</b>	20.4	0.4	41.4	19.5	74.7
<b>2016</b>	19.3	0.4	38.7	17.6	71.5
<b>2017</b>	17.8	0.4	35.7	15.8	66.5
<b>2018</b>	16.5	0.3	33.3	15.4	60.8
<b>BLACK OR AFRICAN AMERICAN</b>					
<b>2008</b>	37.7	1.6	78.1	37.2	155.7
<b>2009</b>	33.3	0.8	69.5	31.6	141.7
<b>2010</b>	29.5	1.1	56.1	27.3	97.0
<b>2011</b>	24.9	0.9	47.7	22.3	84.0
<b>2012</b>	26.2	**	49.8	26.2	81.2
<b>2013</b>	25.1	0.7	47.5	20.9	82.9
<b>2014</b>	16.9	**	33.3	15.9	59.4
<b>2015</b>	16.6	**	32.6	14.2	59.8
<b>2016</b>	17.3	**	34.0	14.0	63.5
<b>2017</b>	17.8	**	34.9	14.0	64.9
<b>2018</b>	14.3	**	28.3	11.6	52.9
<b>AMERICAN INDIAN OR ALASKA NATIVE</b>					
<b>2008</b>	35.5	1.4	67.4	38.1	115.2
<b>2009</b>	34.7	1.0	66.2	36.9	114.0
<b>2010</b>	37.0	1.2	69.5	40.5	111.0
<b>2011</b>	29.2	0.8	55.7	28.8	94.2
<b>2012</b>	33.6	0.5	65.5	32.2	110.7
<b>2013</b>	29.7	0.6	58.6	31.5	98.0
<b>2014</b>	19.2	0.7	37.8	21.0	62.7
<b>2015</b>	26.8	0.9	52.5	27.3	90.8
<b>2016</b>	24.7	1.1	47.9	24.8	83.9
<b>2017</b>	22.8	0.7	45.2	23.3	78.9
<b>2018</b>	20.6	0.6	41.5	19.8	74.1
<b>ASIAN OR PACIFIC ISLANDER</b>					
<b>2008</b>	13.5	**	27.6	11.6	53.5
<b>2009</b>	11.6	**	23.6	8.2	48.7
<b>2010</b>	9.9	**	19.9	8.3	35.5
<b>2011</b>	9.1	**	18.0	7.2	32.7
<b>2012</b>	7.5	**	14.6	5.6	26.6
<b>2013</b>	6.8	**	13.2	3.7	25.5
<b>2014</b>	5.5	**	10.9	4.6	20.3
<b>2015</b>	6.3	0.0	12.8	4.8	23.8
<b>2016</b>	5.0	0.0	10.0	3.4	19.0
<b>2017</b>	5.8	**	11.3	2.0	24.2
<b>2018</b>	4.6	0.0	8.8	2.3	17.8

Note: \*\* Cell suppressed due to rate/ratio/percent based on non-zero count less than 6.

**TABLE 15  
TRENDS IN SEXUALLY TRANSMITTED INFECTIONS BY AGE GROUP AND YEAR AMONG FEMALES 10-19 YEARS,  
ARIZONA, 2008-2018**

	2008	2009	2010	2011	2012	2013	2014	2015	2016	2017	2018
<b>10-14 years</b>											
<b>Diagnosed with:</b>											
<b>Gonorrhea</b>	19	26	22	27	21	21	16	30	38	39	32
<b>Chlamydia</b>	249	224	223	208	197	135	143	131	166	155	164
<b>Early syphilis</b>	*	0	0	0	0	0	0	0	0	*	0
<b>Total reported infections</b>	270†	250	245	235	218	156	159	161	204	200†	196
<b>15-19 years</b>											
<b>Diagnosed with:</b>											
<b>Gonorrhea</b>	468	453	529	691	813	702	679	751	856	1,024	937
<b>Chlamydia</b>	6,595	6,771	6,666	7,073	6,882	6,213	5,876	5,952	6,385	7,016	7,050
<b>Early syphilis</b>	8	6	10	8	6	6	9	8	7	23	39
<b>Total reported infections</b>	7,071	7,230	7,205	7,772	7,701	6,921	6,564	6,711	7,248	8,063	8,026

Notes: \* Cell suppressed due to non-zero count less than 6; † Sum rounded to nearest tens unit due to non-zero addend less than 6; Information about the number of reported cases of gonorrhea, chlamydia, and early syphilis was provided by STD Program in the Office of Infectious Diseases (see Table 3B-3 in the Arizona Health Status and Vital Statistics annual reports).

**TABLE 16**  
**TRENDS IN THE INCIDENCE RATES<sup>a</sup> OF SEXUALLY TRANSMITTED INFECTIONS BY AGE GROUP AND YEAR AMONG**  
**FEMALES 10-19 YEARS, ARIZONA, 2008-2018**

	2008	2009	2010	2011	2012	2013	2014	2015	2016	2017	2018
<b>10-14 years</b>											
<b>Diagnosed with:</b>											
<b>Gonorrhea</b>	8.4	11.4	10.0	12.3	9.4	9.4	7.1	13.3	16.9	17.3	13.9
<b>Chlamydia</b>	110.3	98.3	101.5	94.7	88.5	60.4	63.7	58.3	73.9	68.8	71.2
<b>Early syphilis</b>	**	0.0	0.0	0.0	0.0	0.0	0.0	0.0	0.0	**	0.0
<b>Total reported infections</b>	119.1	109.7	111.5	107.0	97.9	69.8	70.8	71.6	90.8	86.5	85.1
<b>15-19 years</b>											
<b>Diagnosed with:</b>											
<b>Gonorrhea</b>	214.1	205.4	253.8	308.1	374.7	321.0	306.9	334.1	380.8	450.3	406.8
<b>Chlamydia</b>	3,017.7	3,070.0	2,971.9	3,153.3	3,171.8	2,840.6	2,656.2	2,647.8	2,840.4	3,085.0	3,060.8
<b>Early syphilis</b>	3.7	2.7	4.5	3.6	2.8	2.7	4.1	3.6	7.6	10.1	16.9
<b>Total reported infections</b>	3,235.5	3,278.1	3,230.2	3,465.0	3,549.3	3,164.3	2,967.2	2,985.5	3,228.8	3,545.4	3,484.5

Notes: \*\* Cell suppressed due to rate/ratio/percent based on non-zero count less than 6; <sup>a</sup> Number of cases per 100,000 females in specified age group.

**TABLE 17  
PREGNANCIES AND PREGNANCY RATES OF FEMALES 19 OR YOUNGER  
BY COUNTY OF RESIDENCE, ARIZONA, 2018**

County of residence	NUMBER OF PREGNANCIES <sup>a</sup>				
	Total, females 19 years or younger	10-14 years	15-19 years old		
			Total, 15-19 years	15-17 years	18-19 years
Apache	80†	*	77	14	63
Cochise	112	0	112	29	83
Coconino	110†	*	106	31	75
Gila	60†	*	60	18	42
Graham	50	0	50	17	33
Greenlee	8	0	10†	*	6
La Paz	20†	*	20†	*	14
Maricopa	3,420	35	3,385	870	2,515
Mohave	117	0	117	25	92
Navajo	130†	*	129	41	88
Pima	750†	*	742	188	554
Pinal	340†	*	336	87	249
Santa Cruz	50†	*	48	8	40
Yavapai	144	0	144	38	106
Yuma	270	0	270	86	184
<b>TOTAL STATE</b>	<b>5,829</b>	<b>60†</b>	<b>5,772</b>	<b>1,490†</b>	<b>4,281</b>

County of residence	PREGNANCY RATES <sup>b</sup>				
	Total, females 19 years or younger	10-14 years	15-19 years old		
			Total 15-19 years	15-17 years	18-19 years
Apache	13.0	**	26.3	7.6	58.2
Cochise	14.4	0.0	29.3	12.3	56.6
Coconino	9.2	**	14.1	12.4	14.9
Gila	21.6	**	43.2	20.2	84.3
Graham	17.6	0.0	34.9	19.1	60.8
Greenlee	11.0	0.0	23.8	**	46.9
La Paz	20.2	**	40.6	**	80.0
Maricopa	11.9	0.2	24.0	10.0	46.5
Mohave	11.2	0.0	23.0	7.5	52.5
Navajo	16.2	**	33.2	16.3	64.4
Pima	11.6	**	21.5	10.0	35.3
Pinal	12.4	**	26.3	10.5	55.2
Santa Cruz	11.9	**	23.4	6.2	53.1
Yavapai	13.3	0.0	27.0	11.4	52.8
Yuma	17.7	0.0	35.7	18.5	63.3
<b>TOTAL STATE</b>	<b>12.6</b>	<b>0.2</b>	<b>25.1</b>	<b>10.8</b>	<b>46.6</b>

Notes: \* Cell suppressed due to non-zero count less than 6; \*\* Cell suppressed due to rate/ratio/percent based on non-zero count less than 6; † Sum rounded to nearest tens unit due to non-zero addend less than 6; <sup>a</sup> The sum of live births, fetal deaths and abortions; <sup>b</sup> The number of pregnancies per 1,000 females in specified group.

**TABLE 18**  
**BIRTHS AND BIRTH RATES, FEMALES 19 OR YOUNGER BY COUNTY OF RESIDENCE,**  
**ARIZONA, 2018**

County of residence	NUMBER OF BIRTHS				
	Total, females 19 years or younger	10-14 years	15-19 years old		
			Total 15-19 years	15-17 years	18-19 years
Apache	80†	*	77	14	63
Cochise	100	0	100	24	76
Coconino	90†	*	84	28	56
Gila	60†	*	55	16	39
Graham	47	0	47	16	31
Greenlee	8	0	10†	*	6
La Paz	20†	*	20†	*	12
Maricopa	2,714	17	2,697	694	2,003
Mohave	116	0	116	25	91
Navajo	130†	*	125	41	84
Pima	600†	*	592	153	439
Pinal	280†	*	283	73	210
Santa Cruz	47	0	47	8	39
Yavapai	117	0	117	29	88
Yuma	267	0	267	86	181
<b>TOTAL STATE</b>	<b>4,659</b>	<b>30†</b>	<b>4,630</b>	<b>1,210†</b>	<b>3,418</b>

County of residence	BIRTH RATES <sup>a</sup>				
	Total, females 19 years or younger	10-14 years	15-19 years old		
			Total 15-19 years	15-17 years	18-19 years
Apache	13.0	**	26.3	7.6	58.2
Cochise	12.9	0.0	26.2	10.2	51.8
Coconino	7.3	**	11.2	11.2	11.1
Gila	19.5	**	39.6	17.9	78.3
Graham	16.6	0.0	32.8	18.0	57.1
Greenlee	11.0	0.0	23.8	**	46.9
La Paz	17.0	**	33.9	**	68.6
Maricopa	9.4	0.1	19.1	8.0	37.1
Mohave	11.1	0.0	22.8	7.5	51.9
Navajo	15.7	**	32.1	16.3	61.5
Pima	9.2	**	17.1	8.1	28.0
Pinal	10.4	**	22.2	8.8	46.6
Santa Cruz	11.4	0.0	22.9	6.2	51.8
Yavapai	10.8	0.0	22.0	8.7	43.9
Yuma	17.5	0.0	35.3	18.5	62.2
<b>TOTAL STATE</b>	<b>10.1</b>	<b>0.1</b>	<b>20.1</b>	<b>8.8</b>	<b>37.2</b>

Notes: \* Cell suppressed due to non-zero count less than 6; \*\* Cell suppressed due to rate/ratio/percent based on non-zero count less than 6; † Sum rounded to nearest tens unit due to non-zero addend less than 6; <sup>a</sup> The number of births per 1,000 females in specified group.

**TABLE 19  
PREGNANCY RATES<sup>a</sup> AND NUMBER OF LIVE BIRTHS, FETAL DEATHS, AND  
ABORTIONS TO TEENS BY INDIVIDUAL AGE, ARIZONA, 2018**

Age	Population	PREGNANCIES BY OUTCOME			TOTAL PREGNANCIES	
		Live births	Induced terminations of pregnancy (or abortions)	Spontaneous fetal losses	Number	Rate
<b>10</b>	47,082	0	0	0	0	<b>0.0</b>
<b>11</b>	46,431	0	*	0	*	<b>**</b>
<b>12</b>	46,219	0	0	0	0	<b>0.0</b>
<b>13</b>	45,953	*	*	0	10	<b>0.2</b>
<b>14</b>	44,816	24	22	0	46	<b>1.0</b>
<b>10-14</b>	230,501	30 <sup>†</sup>	30 <sup>†</sup>	0	60 <sup>†</sup>	<b>0.2</b>
<b>15</b>	45,135	140	33	*	175	<b>3.9</b>
<b>16</b>	46,259	375	94	*	472	<b>10.2</b>
<b>17</b>	46,972	697	144	*	844	<b>18.0</b>
<b>15-17</b>	138,366	1,212	271	10 <sup>†</sup>	1,491	<b>10.8</b>
<b>18</b>	46,489	1,294	358	*	1,657	<b>35.6</b>
<b>19</b>	45,474	2,124	489	11	2,624	<b>57.7</b>
<b>18-19</b>	91,963	3,418	847	20 <sup>†</sup>	4,281	<b>46.6</b>
<b>Total 10-19</b>	460,830	4,659	1,146	24	5,829	<b>12.6</b>

Notes: \* Cell suppressed due to non-zero count less than 6; \*\* Cell suppressed due to rate/ratio/percent based on non-zero count less than 6; <sup>†</sup> Sum rounded to nearest tens unit due to non-zero addend less than 6; <sup>a</sup> Rates per 1,000 female population in specific group.

**TABLE 20  
BIRTHS TO FEMALES 19 OR YOUNGER BY AGE AND COUNTY OF RESIDENCE,  
ARIZONA, 2018**

	Total	Mother's age							
		12	13	14	15	16	17	18	19
<b>TOTAL</b>	4,660†	0	10†	20†	140†	380†	700†	1,290†	2,120†
<b>Apache</b>	80†	0	0	*	*	*	9	29	34
<b>Cochise</b>	100†	0	0	0	*	8	13	31	45
<b>Coconino</b>	90†	0	0	*	*	8	15	24	32
<b>Gila</b>	60†	0	0	*	*	*	11	11	28
<b>Graham</b>	50†	0	0	0	*	6	7	9	22
<b>Geenlee</b>	10†	0	0	0	0	0	*	*	*
<b>La Paz</b>	20†	0	0	*	0	0	*	*	7
<b>Maricopa</b>	2,710†	0	*	15	69	215	410	778	1,225
<b>Mohave</b>	120†	0	0	0	*	11	11	37	54
<b>Navajo</b>	130†	0	*	*	6	15	20	29	55
<b>Pima</b>	600†	0	*	*	18	48	87	149	290
<b>Pinal</b>	280†	0	*	0	12	14	47	84	126
<b>Santa Cruz</b>	50†	0	0	0	0	7	*	13	26
<b>Yavapai</b>	120†	0	0	0	*	*	20	31	57
<b>Yuma</b>	267	0	0	0	14	31	41	61	120

Notes: \* Cell suppressed due to non-zero count less than 6; † Sum rounded to nearest tens unit due to non-zero addend less than 6.

**TABLE 21  
ABORTIONS TO FEMALES 19 OR YOUNGER BY AGE AND COUNTY OF RESIDENCE,  
ARIZONA, 2018**

	<b>Total</b>	<b>10</b>	<b>11</b>	<b>12</b>	<b>13</b>	<b>14</b>	<b>15</b>	<b>16</b>	<b>17</b>	<b>18</b>	<b>19</b>
<b>TOTAL</b>	1,150†	0	0†	0	10†	20†	30†	90†	140†	360†	490†
<b>Apache</b>	0	0	0	0	0	0	0	0	0	0	0
<b>Cochise</b>	10†	0	0	0	0	0	*	*	*	*	*
<b>Coconino</b>	20†	0	0	0	0	*	*	*	0	8	11
<b>Gila</b>	10†	0	0	0	0	*	0	*	*	*	*
<b>Graham</b>	0†	0	0	0	0	0	0	0	*	0	*
<b>Greenlee</b>	0	0	0	0	0	0	0	0	0	0	0
<b>La Paz</b>	0†	0	0	0	0	0	0	*	0	*	0
<b>Maricopa</b>	690†	0	*	0	*	15	18	61	90	206	296
<b>Mohave</b>	0†	0	0	0	0	0	0	0	0	*	0
<b>Navajo</b>	0†	0	0	0	0	0	0	0	0	*	*
<b>Pima</b>	150†	0	0	0	0	*	*	7	22	47	65
<b>Pinal</b>	50†	0	0	0	*	0	*	*	9	18	19
<b>Santa Cruz</b>	0†	0	0	0	0	*	0	0	0	*	0
<b>Yavapai</b>	30†	0	0	0	0	0	*	*	*	8	9
<b>Yuma</b>	0†	0	0	0	0	0	0	0	0	*	*
<b>Unknown</b>	170†	0	0	0	*	*	*	16	14	59	78

Notes: \* Cell suppressed due to non-zero count less than 6; † Sum rounded to nearest tens unit due to non-zero addend less than 6.



**TABLE 22  
SOURCES OF PAYMENT FOR LABOR AND DELIVERY, FEMALES 19 OR YOUNGER  
BY AGE AND COUNTY OF RESIDENCE, ARIZONA, 2018**

	<b>Total</b>	<b>AHCCCS</b>	<b>IHS</b>	<b>Private insurance</b>	<b>Self-pay</b>	<b>Unknown</b>
<b>TOTAL</b>	4,659	3,833	110†	460†	160†	100†
<b>Apache</b>	80†	68	6	*	*	0
<b>Cochise</b>	100†	84	0	*	8	*
<b>Coconino</b>	90†	70	*	6	*	*
<b>Gila</b>	60†	32	19	*	*	*
<b>Graham</b>	50†	31	10	*	*	0
<b>Greenlee</b>	10†	6	*	0	*	0
<b>La Paz</b>	20†	13	*	0	0	*
<b>Maricopa</b>	2,714	2,283	17	268	75	71
<b>Mohave</b>	120†	102	*	8	*	*
<b>Navajo</b>	130†	116	*	8	0	*
<b>Pima</b>	595	467	12	84	22	10
<b>Pinal</b>	284	207	29	36	10	*
<b>Santa Cruz</b>	50†	42	0	*	*	*
<b>Yavapai</b>	120†	98	*	17	*	0
<b>Yuma</b>	270†	214	*	18	31	*

Notes: \* Cell suppressed due to non-zero count less than 6; † Sum rounded to nearest tens unit due to non-zero addend less than 6.

**TABLE 23  
SOURCES OF PAYMENT FOR LABOR AND DELIVERY, FEMALES 19 OR YOUNGER  
BY AGE GROUP, ARIZONA, 2018**

		Total	Mother's age group			
			<15	15-17	18-19	
<b>Total</b>	<b>Count</b>	4,660 <sup>†</sup>	30 <sup>†</sup>	1,212	3,418	
<b>Payer for births</b>	<b>AHCCCS</b>	<b>Count</b>	3,833	22	994	2,817
		<b>Percent</b>	82.3	75.9	82.0	82.4
	<b>IHS</b>	<b>Count</b>	110 <sup>†</sup>	*	35	70
		<b>Percent</b>	2.3	**	2.9	2.0
	<b>Private insurance</b>	<b>Count</b>	460 <sup>†</sup>	*	97	358
		<b>Percent</b>	9.8	**	8.0	10.5
	<b>Self-pay</b>	<b>Count</b>	160 <sup>†</sup>	*	56	107
		<b>Percent</b>	3.5	**	4.6	3.1
	<b>Unknown</b>	<b>Count</b>	100 <sup>†</sup>	*	30	66
		<b>Percent</b>	2.1	**	2.5	1.9

Notes: \* Cell suppressed due to non-zero count less than 6; \*\* Cell suppressed due to rate/ratio/percent based on non-zero count less than 6; <sup>†</sup> Sum rounded to nearest tens unit due to non-zero addend less than 6.

**TABLE 24  
TEENAGE BIRTHS BY NUMBER OF PREVIOUS PREGNANCIES BY AGE GROUP,  
ARIZONA, 2018**

		Total	Mother's age group			
			<15	15-17	18-19	
<b>Total</b>	<b>Count</b>	4,660†	29	1,212	3,420†	
<b>Total prior pregnancies</b>	<b>None</b>	<b>Count</b>	3,934	29	1,120	2,785
		<b>Percent</b>	84.4	100.0	92.4	81.5
	<b>1</b>	<b>Count</b>	631	0	84	547
		<b>Percent</b>	13.5	0.0	6.9	16.0
	<b>2</b>	<b>Count</b>	87	0	8	79
		<b>Percent</b>	1.9	0.0	0.7	2.3
	<b>3</b>	<b>Count</b>	0†	0	0	*
		<b>Percent</b>	0.0	0.0	0.0	0.0
	<b>4 or more</b>	<b>Count</b>	0†	0	0	*
		<b>Percent</b>	0.0	0.0	0.0	0.0
	<b>Unknown</b>	<b>Count</b>	0	0	0	0
		<b>Percent</b>	0.0	0.0	0.0	0.0

**TABLE 25  
TEENAGE BIRTHS BY MARITAL STATUS AND AGE GROUP,  
ARIZONA, 2018**

		Total	Mother's age group			
			<15	15-17	18-19	
<b>Total</b>	<b>Count</b>	4,659	29	1,210†	3,418	
<b>Marital status</b>	<b>Married</b>	<b>Count</b>	455	0	44	411
		<b>Percent</b>	9.8	0.0	3.6	12.0
	<b>Unmarried</b>	<b>Count</b>	4,188	29	1,166	2,993
		<b>Percent</b>	89.9	100.0	96.2	87.6
	<b>Other</b>	<b>Count</b>	20†	0	*	14
		<b>Percent</b>	0.3	0.0	**	0.4

**TABLE 26  
TEENAGE BIRTHS BY MOTHER'S EDUCATION AND AGE GROUP  
ARIZONA, 2018**

		Total	Mother's age group			
			<15	15-17	18-19	
<b>Total</b>	<b>Count</b>	4,660†	29	1,210†	3,420†	
<b>Mother's education</b>	<b>8th Grade or Less</b>	<b>Count</b>	249	16	114	119
		<b>Percent</b>	5.3	55.2	9.4	3.5
	<b>Some High School</b>	<b>Count</b>	2,424	13	972	1,439
		<b>Percent</b>	52.0	44.8	80.2	42.1
	<b>High School / GED</b>	<b>Count</b>	1,545	0	113	1,432
		<b>Percent</b>	33.2	0.0	9.3	41.9
	<b>Some College</b>	<b>Count</b>	390†	0	*	391
		<b>Percent</b>	8.5	0.0	0.0	11.4
	<b>Associate Degree</b>	<b>Count</b>	30†	0	*	24
		<b>Percent</b>	0.5	0.0	0.0	0.7
	<b>Bachelor's Degree</b>	<b>Count</b>	0†	0	0	*
		<b>Percent</b>	**	0.0	0.0	**
	<b>Postgraduate Education</b>	<b>Count</b>	0	0	0	0
		<b>Percent</b>	0.0	0.0	0.0	0.0
	<b>Unknown</b>	<b>Count</b>	20	0	9	11
		<b>Percent</b>	0.4	0.0	0.7	0.3

Notes: \* Cell suppressed due to non-zero count less than 6; \*\* Cell suppressed due to rate/ratio/percent based on non-zero count less than 6; † Sum rounded to nearest tens unit due to non-zero addend less than 6.

**TABLE 27  
TEENAGE BIRTHS BY TRIMESTER OF ENTRY INTO PRENATAL CARE  
AND AGE GROUP, ARIZONA, 2018**

		Total	Mother's age group			
			<15	15-17	18-19	
<b>Total</b>	<b>Count</b>	4,659	30†	1,212	3,418	
<b>Prenatal care</b>	<b>No care</b>	<b>Count</b>	*	83	140	
		<b>Percent</b>	**	6.8	4.1	
	<b>1st trimester</b>	<b>Count</b>	2,399	6	523	1,870
		<b>Percent</b>	51.5	20.7	43.2	54.7
	<b>2nd trimester</b>	<b>Count</b>	1,263	11	367	885
		<b>Percent</b>	27.1	37.9	30.3	25.9
	<b>3rd trimester</b>	<b>Count</b>	556	6	187	363
		<b>Percent</b>	11.9	20.7	15.4	10.6
	<b>Unknown</b>	<b>Count</b>	220†	*	52	160
		<b>Percent</b>	4.6	**	4.3	4.7

**TABLE 28  
TEENAGE BIRTHS BY NUMBER OF PRENATAL VISITS AND AGE GROUP,  
ARIZONA, 2018**

		Total	Mother's age group			
			<15	15-17	18-19	
<b>Total</b>	<b>Count</b>	4,659	30†	1,212	3,418	
<b>Prenatal visits</b>	<b>No visits</b>	<b>Count</b>	*	83	140	
		<b>Percent</b>	**	6.8	4.1	
	<b>1-4 visits</b>	<b>Count</b>	410†	*	117	292
		<b>Percent</b>	8.8	**	9.7	8.5
	<b>5-8 visits</b>	<b>Count</b>	1,107	10	327	770
		<b>Percent</b>	23.8	34.5	27.0	22.5
	<b>9-12 visits</b>	<b>Count</b>	1,900	10	454	1,436
		<b>Percent</b>	40.8	34.5	37.5	42.0
	<b>13+ visits</b>	<b>Count</b>	940†	*	210	730
		<b>Percent</b>	20.2	**	17.3	21.4
	<b>Unknown</b>	<b>Count</b>	70†	*	21	50
		<b>Percent</b>	1.5	**	1.7	1.5

Notes: \* Cell suppressed due to non-zero count less than 6; \*\* Cell suppressed due to rate/ratio/percent based on non-zero count less than 6; † Sum rounded to nearest tens unit due to non-zero addend less than 6.

**TABLE 29  
TOBACCO USE DURING PREGNANCY AMONG FEMALES 19 OR YOUNGER BY  
AGE GROUP, ARIZONA, 2018**

		Total	Mother's age group		
			<15	15-17	18-19
<b>Total</b>	<b>Count</b>	4,659	29	1,212	3,418
<b>Substance use</b>	<b>Nonsmoker</b>	<b>Count</b>	29	1,174	3,226
		<b>Percent</b>	95.1	100.0	96.9
	<b>Light smoker</b>	<b>Count</b>	0	19	95
		<b>Percent</b>	2.4	0.0	1.6
	<b>Heavy smoker</b>	<b>Count</b>	0	6	56
		<b>Percent</b>	1.3	0.0	0.5
	<b>Unknown</b>	<b>Count</b>	0	13	41
		<b>Percent</b>	1.2	0.0	1.1

**TABLE 30  
RISK FOR LOW-BIRTHWEIGHT (LBW) BIRTHS BY SELECTED CHARACTERISTICS OF FEMALES 19 OR YOUNGER,  
ARIZONA, 2018**

	Mother's age group											
	<15					15-17					18-19	
	Total births	LBW births		Total births	LBW births		Total births	LBW births		Total births	LBW births	
		Count	Percent		Count	Percent		Count	Percent		Count	Percent
<b>Race/ethnicity</b>												
White non-Hispanic	*	0	0.0	213	20	9.4	872	72	8.3			
Hispanic or Latino	17	*	**	795	74	9.3	1,982	144	7.3			
Black or African American	*	0	0.0	60	*	**	210	40	19.0			
American Indian or Alaska Native	7	0	0.0	134	10	7.5	322	25	7.8			
Asian	0	0	0.0	10	*	**	32	*	**			
<b>Smoking during pregnancy</b>												
Nonsmoker	29	*	**	1,174	103	8.8	3,226	259	8.0			
Light smoker	0	0	0.0	19	*	**	95	10	10.5			
Heavy smoker	0	0	0.0	6	*	**	56	6	10.7			
Unknown	0	0	0.0	13	*	**	41	10	24.4			
<b>Payer for births</b>												
AHCCCS	22	*	**	994	83	8.4	2,817	229	8.1			
IHS	*	0	0.0	35	*	**	70	6	8.6			
Private insurance	*	0	0.0	97	13	13.4	358	30	8.4			
Self-pay	*	0	0.0	56	*	**	107	10	9.3			
Unknown	*	*	**	30	*	**	66	10	15.2			
<b>Length of gestation</b>												
36 weeks or less	*	0	0.0	100	59	59.0	309	172	55.7			
37 weeks or more	26	*	**	1,107	51	4.6	3,106	112	3.6			
Unknown	0	0	0.0	*	0	0.0	*	*	**			
<b>Prenatal visits</b>												
Less than 5	6	*	**	200	31	15.5	432	72	16.7			
5 or more	22	*	**	991	78	7.9	2,936	199	6.8			
Unknown	*	0	0.0	21	*	**	50	14	28.0			

Notes: \* Cell suppressed due to non-zero count less than 6; \*\* Cell suppressed due to rate/ratio/percent based on non-zero count less than 6.

**TABLE 31  
POPULATION OF FEMALES 19 OR YOUNGER, NUMBER OF PREGNANCIES AND PREGNANCY  
RATES BY AGE GROUP, AND RACE/ETHNICITY, ARIZONA, 2018**

	POPULATION				
	All 19 years or younger	10-14 years	15-19 years	15-17 years	18-19 years
<b>All groups</b>	460,830	230,501	230,329	138,366	91,963
<b>White non-Hispanic</b>	193,168	94,980	98,188	58,764	39,424
<b>Hispanic or Latino</b>	201,368	102,270	99,098	59,987	39,111
<b>Black or African American</b>	26,041	13,030	13,011	7,756	5,255
<b>American Indian or Alaska Native</b>	24,056	12,333	11,723	7,029	4,694
<b>Asian or Pacific Islander</b>	16,197	7,888	8,309	4,830	3,479

Note: Population denominator tables can be found:

<http://pub.azdhs.gov/health-stats>

	NUMBER OF PREGNANCIES				
	All 19 years or younger	10-14 years	15-19 years	15-17 years	18-19 years
<b>All groups</b>	5,829	60 <sup>†</sup>	5,772	1,491	4,281
<b>White non-Hispanic</b>	1,495	15	1,480	310	1,170
<b>Hispanic or Latino</b>	3,330	28	3,302	925	2,377
<b>Black or African American</b>	370 <sup>†</sup>	*	368	90	278
<b>American Indian or Alaska Native</b>	495	8	487	139	348
<b>Asian or Pacific Islander</b>	70 <sup>†</sup>	*	73	11	62

	PREGNANCY RATES PER 1,000 FEMALES				
	All 19 years or younger	10-14 years	15-19 years	15-17 years	18-19 years
<b>All groups</b>	12.6	0.2	25.1	10.8	46.6
<b>White non-Hispanic</b>	7.7	0.2	15.1	5.3	29.7
<b>Hispanic or Latino</b>	16.5	0.3	33.3	15.4	60.8
<b>Black or African American</b>	14.3	**	28.3	11.6	52.9
<b>American Indian or Alaska Native</b>	20.6	0.6	41.5	19.8	74.1
<b>Asian or Pacific Islander</b>	4.6	**	8.8	2.3	17.8

Notes: \* Cell suppressed due to non-zero count less than 6; \*\* Cell suppressed due to rate/ratio/percent based on non-zero count less than 6; <sup>†</sup> Sum rounded to nearest tens unit due to addend less than 6.

**TABLE 32  
POPULATION OF FEMALES 19 OR YOUNGER BY COUNTY OF RESIDENCE, ARIZONA, 2018**

	All 19 years or younger	10-14 years	15-19 years		
			15-19 years	15-17 years	18-19 years
<b>ARIZONA</b>	460,830	230,501	230,329	138,366	91,963
<b>Apache</b>	5,982	3,055	2,927	1,844	1,083
<b>Cochise</b>	7,774	3,954	3,820	2,353	1,467
<b>Coconino</b>	11,705	4,181	7,524	2,491	5,033
<b>Gila</b>	2,877	1,487	1,390	892	498
<b>Graham</b>	2,839	1,408	1,431	888	543
<b>Greenlee</b>	730	394	336	208	128
<b>La Paz</b>	940	497	443	268	175
<b>Maricopa</b>	287,255	146,025	141,230	87,179	54,051
<b>Mohave</b>	10,422	5,327	5,095	3,343	1,752
<b>Navajo</b>	8,193	4,304	3,889	2,523	1,366
<b>Pima</b>	64,507	29,971	34,536	18,844	15,692
<b>Pinal</b>	27,431	14,673	12,758	8,250	4,508
<b>Santa Cruz</b>	4,134	2,082	2,052	1,299	753
<b>Yavapai</b>	10,791	5,461	5,330	3,324	2,006
<b>Yuma</b>	15,250	7,682	7,568	4,660	2,908

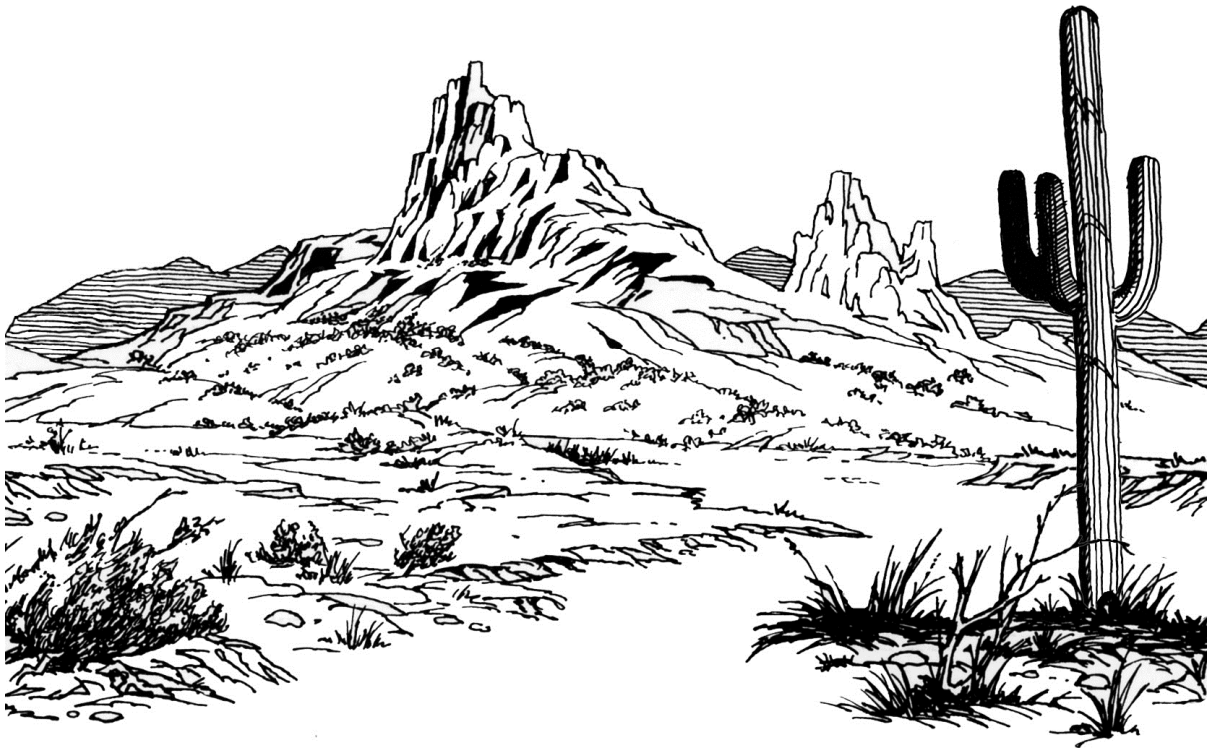
Note: Population denominator tables can be found:  
<http://pub.azdhs.gov/health-stats>



**APPENDIX  
HOW TO COMPUTE THE RATES OF FIRST AND REPEAT CHILDBEARING**

	2008	2009	2010	2011	2012	2013	2014	2015	2016	2017	2018	Comments
A. The number of females 15-19 years old	218,545	220,555	224,302	225,857	227,395	228,652	220,134	222,162	225,110	228,583	230,329	Genus enumerations for 2010; population estimates for 2008-2018.
B. The number of births to females 15-19 years old	12,000	10,820	9,311	8,334	8,050	7,151	6,577	5,843	5,336	5,005	4,630	Based on the birth database.
C. The rate of births (B/A)*1,000	<b>54.9</b>	<b>49.1</b>	<b>41.5</b>	<b>36.9</b>	<b>35.4</b>	<b>31.3</b>	<b>29.9</b>	<b>26.3</b>	<b>23.7</b>	<b>21.9</b>	<b>20.1</b>	The number of births per 1,000 females 15-19 years old.
D. Cumulative number of mothers who gave birth when 15-19 years old	26,958	25,352	25,892	19,816	17,929	16,031	14,384	12,800	11,433	10,482	9,596	Mothers who gave birth when 15-19 years old. As an example, the 2018 cohort of mothers who were 15-19 years old includes 4,630 who gave birth that year and 5,222 who gave birth prior to 2018 and were still 15-19 years old in 2018 (Table 13).
E. The number of females 15-19 years old who had a birth previously (D-B)	14,958	14,532	16,581	11,482	9,879	8,880	7,807	6,957	6,097	5,477	4,966	The cumulative number of mothers 15-19 years old (Table 13) minus those who gave birth that year.
F. The number of repeat births to females 15-19 years old who had a birth previously	2,658	2,252	1,898	1,639	1,521	1,300	1,161	990	861	811	716	Table 1B-23 in "Arizona Health Status and Vital Statistics" annual report.
G. The rate of repeat childbearing (F/E)*1,000	<b>177.7</b>	<b>155.0</b>	<b>114.5</b>	<b>142.7</b>	<b>154.0</b>	<b>146.4</b>	<b>148.7</b>	<b>142.3</b>	<b>141.2</b>	<b>148.1</b>	<b>144.2</b>	The number of repeat births per 1,000 females 15-19 years old who had a birth previously.
H. The number of females 15-19 years old who did not have a birth previously (A-E)	203,587	206,023	207,721	214,375	217,516	219,772	212,327	215,205	219,013	223,106	225,363	All 15-19 years old - those who gave birth previously.
I. The number of first-time births to females 15-19 years old who did not have a birth previously	9,342	8,568	7,409	6,683	6,522	5,844	5,414	4,851	4,474	4,193	3,914	Table 1B-23 in "Arizona Health Status and Vital Statistics" annual report.
J. The rate of first-time births (I/H)*1,000	<b>45.9</b>	<b>41.6</b>	<b>35.7</b>	<b>31.2</b>	<b>30.0</b>	<b>26.6</b>	<b>25.5</b>	<b>22.5</b>	<b>20.4</b>	<b>18.8</b>	<b>17.4</b>	The number of first-time births per 1,000 females 15-19 years old who did not have a birth previously.

Our Web site at <http://pub.azdhs.gov/health-stats> provides access to a wide range of statistical information about the health status of Arizonans. The Arizona Health Status and Vital Statistics annual report examines trends in natality, mortality, and morbidity towards established health objectives. Additional reports and studies include Advance Vital Statistics by County of Residence, Injury Mortality among Arizona Residents (accidents, suicides, homicides, legal intervention, firearm-related fatalities, drug-related deaths, drowning deaths, falls among Arizonans 65 years or older), Hospital Inpatient and Emergency Room Statistics (first-listed diagnosis, procedures, mental disorders, asthma, diabetes, influenza and pneumonia, and substance abuse), Community Vital Statistics, Teenage Pregnancy, Differences in Health Status Among Racial/Ethnic Groups, and Health Status Profile of American Indians in Arizona.



**ARIZONA DEPARTMENT OF HEALTH SERVICES**  
**Bureau of Public Health Statistics**  
**Population Health and Vital Statistics Section**