



TEENAGE PREGNANCY ARIZONA, 2012-2022



ARIZONA DEPARTMENT
OF HEALTH SERVICES

~ Health and Wellness for all Arizonans ~



**Katie Hobbs, Governor
State of Arizona**

**Jennie Cunico, Director
Arizona Department of Health Services**

**ARIZONA DEPARTMENT OF HEALTH SERVICES
BUSINESS INTELLIGENCE OFFICE
VITAL STATISTICS PROGRAM**

150 North 18th Avenue, Suite 550
Phoenix, Arizona 85007

<http://pub.azdhs.gov/health-stats>

This publication can be made available in alternative format.

**Please contact the Vital Statistics Program at
vitalstats@azdhs.gov**

***The Arizona Department of Health Services is
an Equal Employment Opportunity Agency.***

***Permission to quote from or reproduce materials from this
publication is granted when due acknowledgment is made.***

TEENAGE PREGNANCY, ARIZONA, 2012-2022

by

**Matthew Roach, MPH, Vital Statistics Manager
Yan Huang, M.S., Data Analyst
Clare Torres, Senior Health Data Analyst**

October 2024

TEENAGE PREGNANCY, ARIZONA, 2012-2022

Table of Contents

PURPOSE	1
METHODS AND SOURCES	1
DATA ORGANIZATION	1
COMPARATIVE NATIONAL AND STATE DATA	2
KEY FINDINGS	2
DATA TABLES	11

List of Figures

Figure 1	3
PREGNANCY RATES BY AGE GROUP AND YEAR AMONG FEMALES 19 OR YOUNGER, ARIZONA, 2012-2022	
Figure 2	3
TRENDS IN THE NUMBER OF PREGNANCIES AND PREGNANCY RATES AMONG FEMALES 19 OR YOUNGER, ARIZONA, 2012-2022	
Figure 3	4
TRENDS IN THE NUMBER OF PREGNANCIES BY RACE/ETHNICITY AMONG FEMALES 19 OR YOUNGER, ARIZONA, 2012-2022	
Figure 4	4
COMPARISON OF PREGNANCY RATES BY YEAR AMONG HISPANIC OR LATINOS AND ALL FEMALES 19 OR YOUNGER, ARIZONA, 2012-2022	
Figure 5	5
COMPARISON OF PREGNANCY RATES BY YEAR AMONG WHITE NON-HISPANICS AND ALL FEMALES 19 OR YOUNGER, ARIZONA, 2012-2022	
Figure 6	5
COMPARISON OF PREGNANCY RATES BY YEAR AMONG AMERICAN INDIAN OR ALASKA NATIVES AND ALL FEMALES 19 OR YOUNGER, ARIZONA, 2012-2022	
Figure 7	6
COMPARISON OF PREGNANCY RATES BY YEAR AMONG BLACK OR AFRICAN AMERICANS AND ALL FEMALES 19 OR YOUNGER, ARIZONA, 2012-2022	
Figure 8	6
COMPARISON OF PREGNANCY RATES BY YEAR AMONG ASIAN OR PACIFIC ISLANDERS AND ALL FEMALES 19 OR YOUNGER, ARIZONA, 2012-2022	
Figure 9	7
PROPORTIONAL CONTRIBUTION OF SURGICAL AND NON-SURGICAL ABORTIONS BY YEAR AMONG FEMALES 19 OR YOUNGER, ARIZONA, 2012-2022	
Figure 10	7
CUMULATIVE NUMBER OF MOTHERS WHO WERE 19 OR YOUNGER IN ARIZONA BY YEAR, 2012-2022	
Figure 11	8
RATES OF FIRST AND REPEAT BIRTHS TO FEMALES 15-19 YEARS, ARIZONA, 2012 AND 2022	
Figure 12	8
BIRTHS TO MOTHERS 19 OR YOUNGER BY MARITAL STATUS, ARIZONA, 2002, 2012, AND 2022	
Figure 13	9
NUMBER OF BIRTHS TO MOTHERS 19 OR YOUNGER BY PAYER, ARIZONA, 2012 AND 2022	
Figure 14	9
TRENDS IN THE INCIDENCE OF SEXUALLY TRANSMITTED INFECTIONS AMONG FEMALES 15-19 YEARS, ARIZONA, 2012-2022	
Figure 15	10
BIRTH RATES FOR TEENAGERS 15-19 YEARS, NATIONALLY AND IN ARIZONA, 2012-2022	
Figure 16	10
BIRTH RATES FOR HISPANIC OR LATINO TEENAGERS 15-19 YEARS, NATIONALLY AND IN ARIZONA, 2012-2022	

List of Tables

Table 1	12
PREGNANCIES AND PREGNANCY OUTCOME BY AGE GROUP AND YEAR, FEMALES 19 OR YOUNGER, ARIZONA, 2012-2022	
Table 2	13
PREGNANCY RATES BY PREGNANCY OUTCOME, AGE GROUP, AND YEAR, FEMALES 19 OR YOUNGER, ARIZONA, 2012-2022	
Table 3	14
LIVE BIRTHS TO FEMALES 19 OR YOUNGER BY AGE GROUP, RACE/ETHNICITY, AND YEAR, ARIZONA, 2012-2022	
Table 4	15
ABORTIONS TO FEMALES 19 OR YOUNGER BY AGE GROUP, RACE/ETHNICITY, AND YEAR, ARIZONA, 2012-2022	
Table 5	16
NUMBER OF PREGNANCIES BY PREGNANCY OUTCOME, RACE/ETHNICITY, AND YEAR AMONG FEMALES AGE 17 OR YOUNGER WITH RATES, ARIZONA, 2012-2022	
Table 6	17
NUMBER OF PREGNANCIES BY PREGNANCY OUTCOME, RACE/ETHNICITY, AND YEAR AMONG FEMALES 15-17 YEARS OLD WITH RATES, ARIZONA, 2012-2022	
Table 7	18
NUMBER OF PREGNANCIES BY PREGNANCY OUTCOME, RACE/ETHNICITY, AND YEAR AMONG FEMALES 18-19 YEARS OLD WITH RATES, ARIZONA, 2012-2022	
Table 8	19
NUMBER OF PREGNANCIES BY PREGNANCY OUTCOME, RACE/ETHNICITY, AND YEAR AMONG FEMALES 19 OR YOUNGER WITH RATES, ARIZONA, 2012-2022	
Table 9	20
TRENDS IN PREGNANCY RATES BY COUNTY OF RESIDENCE AMONG FEMALES 10-17 YEARS, 18-19 YEARS, AND 19 YEARS OR YOUNGER, ARIZONA, 2012-2022	
Table 10	21
LIVE BIRTHS TO FEMALES 19 OR YOUNGER AS A PERCENTAGE OF TOTAL LIVE BIRTHS BY AREA, RACE/ETHNICITY, AND YEAR, ARIZONA, 2012-2022	
Table 11	22
BIRTH RATES BY AGE GROUP FOR FEMALES 19 OR YOUNGER, ARIZONA AND UNITED STATES, 2012-2022	
Table 12	23
REPEAT PREGNANCIES AMONG TEENAGE MOTHERS GIVING BIRTH BY AGE AND YEAR, ARIZONA, 2012-2022	
Table 13	24
CUMULATIVE NUMBER OF MOTHERS WHO WERE 19 OR YOUNGER IN ARIZONA IN 2022	
Table 14	25
TRENDS IN TEEN PREGNANCY RATES BY RACE/ETHNICITY AND AGE GROUP, ARIZONA, 2012-2022	
Table 15	26
TRENDS IN SEXUALLY TRANSMITTED INFECTIONS BY AGE GROUP AND YEAR AMONG FEMALES 10-19 YEARS, ARIZONA, 2012-2022	
Table 16	27
TRENDS IN THE INCIDENCE RATES OF SEXUALLY TRANSMITTED INFECTIONS BY AGE GROUP AND YEAR AMONG FEMALES 10-19 YEARS, ARIZONA, 2012-2022	
Table 17	28
PREGNANCIES AND PREGNANCY RATES OF FEMALES 19 OR YOUNGER BY COUNTY OF RESIDENCE, ARIZONA, 2022	
Table 18	29
BIRTHS AND BIRTH RATES, FEMALES 19 OR YOUNGER BY COUNTY OF RESIDENCE, ARIZONA, 2022	
Table 19	30
PREGNANCY RATES AND NUMBER OF LIVE BIRTHS, FETAL DEATHS, AND ABORTIONS TO TEENS BY INDIVIDUAL AGE, ARIZONA, 2022	
Table 20	31
BIRTHS TO FEMALES 19 OR YOUNGER BY AGE AND COUNTY OF RESIDENCE, ARIZONA, 2022	
Table 21	32
ABORTIONS TO FEMALES 19 OR YOUNGER BY AGE AND COUNTY OF RESIDENCE, ARIZONA, 2022	

List of Tables (continued)

Table 22	33
SOURCES OF PAYMENT FOR LABOR AND DELIVERY, FEMALES 19 OR YOUNGER BY AGE, AND COUNTY OF RESIDENCE, ARIZONA, 2022	
Table 23	34
SOURCES OF PAYMENT FOR LABOR AND DELIVERY, FEMALES 19 OR YOUNGER BY AGE GROUP, ARIZONA, 2022	
Table 24	35
TEENAGE BIRTHS BY NUMBER OF PREVIOUS PREGNANCIES BY AGE GROUP, ARIZONA, 2022	
Table 25	35
TEENAGE BIRTHS BY MARITAL STATUS AND AGE GROUP, ARIZONA, 2022	
Table 26	35
TEENAGE BIRTHS BY MOTHER'S EDUCATION AND AGE GROUP, ARIZONA, 2022	
Table 27	36
TEENAGE BIRTHS BY TRIMESTER OF ENTRY INTO PRENATAL CARE AND AGE GROUP, ARIZONA, 2022	
Table 28	36
TEENAGE BIRTHS BY NUMBER OF PRENATAL VISITS AND AGE GROUP, ARIZONA, 2022	
Table 29	37
TOBACCO USE DURING PREGNANCY AMONG FEMALES 19 OR YOUNGER BY AGE GROUP, ARIZONA, 2022	
Table 30	38
RISK FOR LOW-BIRTHWEIGHT (LBW) BIRTHS BY SELECTED CHARACTERISTICS OF FEMALES 19 OR YOUNGER, ARIZONA, 2022	
Table 31	39
POPULATION OF FEMALES 19 OR YOUNGER, NUMBER OF PREGNANCIES AND PREGNANCY RATES BY AGE GROUP, AND RACE/ETHNICITY, ARIZONA, 2022	
Table 32	40
POPULATION OF FEMALES 19 OR YOUNGER BY COUNTY OF RESIDENCE, ARIZONA, 2022	
Appendix	41
HOW TO COMPUTE THE RATES OF FIRST AND REPEAT CHILDBEARING	

PURPOSE

This report is the annual update of information about pregnancies among females under age 20. The data for 2022 is placed in a temporal context by comparing it with the data from the preceding years. Earlier reports are available online at <http://pub.azdhs.gov/health-stats/report/tp/index.php>.

METHODS AND SOURCES

In this report, pregnancies are measured as the sum of three components: live births, fetal deaths (or stillbirths), and reported abortions to Arizona resident women, unless otherwise specified. Not included are spontaneous fetal losses that occur at less than 20 weeks of gestation. Induced terminations of pregnancy do not include those performed out-of-state to Arizona residents, since they are not reported in Arizona. Pregnancy statistics for Arizona are not available on a sub-county level.

Teens are defined as 10-14 year old preadolescents and adolescents 15-19 years of age. Where possible, the data presented distinguishes 18-19 year old teenagers from those aged 15-17 and girls less than 15 years of age.

The primary source documents for the data are the certificates of live births, certificates of fetal deaths, and reports of induced terminations of pregnancy filed with the Arizona Department of Health Services.

The population denominators for Arizona's resident females used to calculate rates for 2003-2009 and 2012-2022 are population estimates of Arizona resident females aged 10-19 years. The 2010 denominators are the actual census enumerations from the U.S. Census Bureau. Detailed information about the assumptions and specific data sources is available online at <http://pub.azdhs.gov/health-stats/menu/info/pop/index.php>. The 2020 denominators from the actual census enumerations from the U.S. Census Bureau were not used due to [Arizona Executive Order 2011-04](#). Executive Order 2011-04 requires state agencies to use the official population estimates from the State Demographer within the Office of Economic Opportunity.

The 2022 Teenage Pregnancy report suppresses information in tables with small cell sizes. To protect the anonymity of the individuals included in this report, cells in tables with five or fewer observations are denoted by an asterisk (*), cells containing rates based on counts of five or fewer are denoted by a double-asterisk (**), and cells containing sums based on addends of five or fewer are rounded to the nearest tens-unit and denoted by a dagger (+).

DATA ORGANIZATION

Tables 1-14 present annual numbers and rates of pregnancy, fertility, and abortion by year from 2012 to 2022 for Arizona teens. Information is presented for specific age groups and by race/ethnicity. Temporal trends and changes may be assessed from this data. Proportional contribution of teen births to all births is shown in Table 10 by area of residence and race/ethnic group in Arizona from 2012 to 2022. Table 11 compares birth rates in Arizona to those in the United States. The annual numbers of repeat pregnancies among teenage mothers are shown by age and year from 2012 to 2022 in Table 12.

Table 14 presents teen pregnancy rates by race/ethnicity and age group by year from 2012 to 2022. Table 15 provides information about the incidence of sexually transmitted infections among females 10-14 and 15-19 years old in Arizona in 2012-2022. Table 16 shows the incidence rates by year from 2012 to 2022.

Frequency counts, proportions, and rates in Tables 17-32 all apply to the 2022 data. Tables 17-18 and 20-22 provide data by county of residence. Table 19 presents pregnancy rates by single year of age among females 19 and younger. Live births to teenage mothers are also reported in Tables 23-30 by source of payment for labor and delivery, previous pregnancies, marital status, education, trimester of entry into prenatal care, number of prenatal visits, tobacco use during pregnancy, and risk for low-birthweight by selected characteristics. The 2022 population denominators for Arizona resident females by age group and race/ethnicity, as well as by age group and county of residence, are presented in Table 31 and Table 32. The *Appendix* demonstrates "How to compute the rates of first and repeat childbearing" using the annual data for 2012-2022.

COMPARATIVE NATIONAL AND STATE DATA

Timely, comparable, and reliable teen pregnancy statistics for other States and the Nation provide meaningful comparisons to place Arizona's teenage birth experiences in context. The Center for Disease Control (CDC) provides a useful source of information on national pregnancy outcomes. The most recent national abortion data provided by the CDC available is for 2021¹ and the most recent fetal death report published by the CDC presents statistics from 2020 through 2021². Another source of national data on reproductive health is the Guttmacher Institute. The latest report³, published by the Institute in October 2024 covers statistics available on the incidence of teen pregnancy, birth and abortion in the United States for 2020, with trend analysis since 1973. The authors present the complete count of births provided by every state to the NCHS in combination with the estimated numbers of abortions, early miscarriages, and fetal deaths. The number of abortions is estimated from surveys the Alan Guttmacher Institute conducts of known abortion providers (i.e. these data are by the place of occurrence and not by the woman's place of residence). The fetal loss estimates – including early miscarriages before 20 weeks of gestation (and estimated as 20% of live births plus 10% of abortions) - are from pregnancy history information collected by the National Survey of Family Growth (NSFG). Unlike vital statistics reports of fetal losses occurring at gestations of 20 weeks or more, NSFG include all gestations. Since the majority of fetal losses occur early in pregnancy before the reporting requirements for fetal deaths are in effect, their inclusion dramatically raises both the fetal loss rate and the pregnancy rate. The National Survey of Family Growth data are not state-specific. Arizona teen pregnancy rates cannot be compared with the rates of their peers nationally. No comparable state-by-state teen pregnancy data for 2012 – 2022 are available at this time.

KEY FINDINGS

The following section presents some illustrative findings contained in the figures and tables of the report. It is not intended to be an exhaustive analysis of the tabulated data.

- **In 2022, the pregnancy rate of 10.0 pregnancies per 1,000 females 19 years or younger was 53.7 percent lower than the rate of 21.6 per 1,000 in 2012. The teen pregnancy rate of 10.0 per 1,000 females 19 years or younger was the lowest teen pregnancy rate since at least 1990.**
 - **It is only since 2012 that the reduction in the number of teen pregnancies was accompanied by an equally impressive decline in pregnancy rates.**
 - **Historically, the declines in teenage pregnancy have been steeper for younger teenagers than for their older counterparts, but recently are becoming more closely aligned. The rate for teenagers 15-17 years dropped steeply by 63.8 percent from 21.8 per 1,000 in 2012 to 7.9 in 2022. The rate for older teenagers (aged 18-19 years) fell by 47.3 percent from 70.2 per 1,000 in 2012 to 37.0 per 1,000 in 2022.**
 - **The 2022 teen pregnancy rate of 10.0 per 1,000 was based on 4,702 pregnancies occurring among 469,280 females aged 10-19 years. The number of 4,702 teen pregnancies in 2022 was 4.3 percent lower than 2021 and was the lowest number of teen pregnancies since at least 1990.**
 - **In 2022, the rate of teenage pregnancies was highest in Hispanic or Latino females (13.9 per 1,000 pregnancies), followed by American Indian or Alaska Native females (13.8 per 1,000 pregnancies), Black or African American (12.5 per 1,000 pregnancies), White Non-Hispanic (5.4 per 1,000 pregnancies), and smallest in Asian (3.0 per 1,000 pregnancies).**
 - **The first birth rate for childless teenagers has dropped 56.0 percent from 30.0 first-time births per 1,000 females 15-19 years old in 2012 to 13.2 per 1,000 in 2022.**
 - **The repeat birth rates for teenagers who had already had a child decreased by 8.4 percent from 154.0 in 2012 to 141.0 per 1,000 females 15-19 years old in 2022, who had a previous birth.**
 - **Unwed mothers have accounted for an increasing annual proportion of births since the 2000s. In 2022, non-marital births accounted for 92.7 percent of births to mothers 19 years or younger.**
 - **The total number of births to mothers 19 years or younger decreased by 55.9 percent from 8,117 in 2012 to 3,576 in 2022. The proportional share of births paid for by the Arizona Health Care Cost Containment System (AHCCCS, the State's Medicaid program) decreased slightly from 83.3 percent in 2012 to 80.0 percent in 2022.**
-

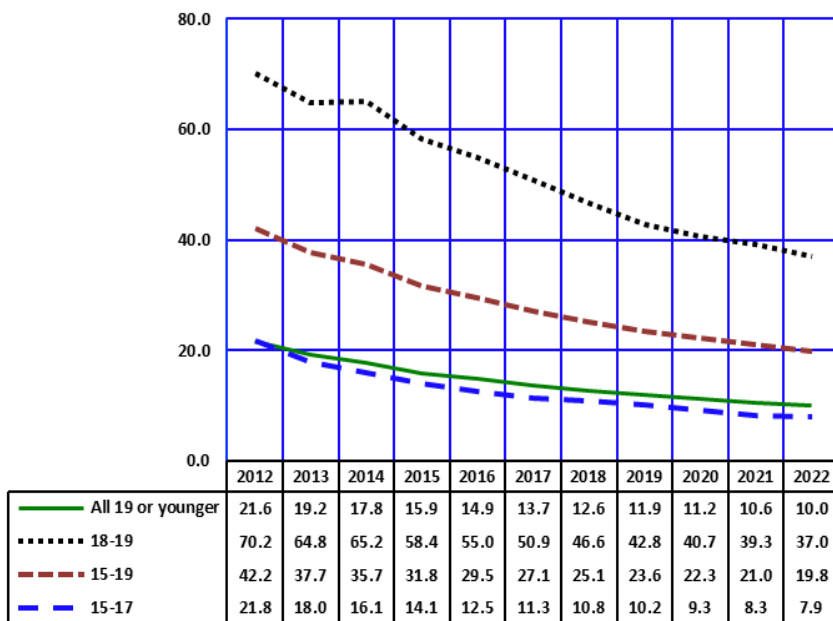
¹<https://www.cdc.gov/mmwr/volumes/72/ss/ss7209a1.htm>

²<https://www.cdc.gov/nchs/data/databriefs/db489.pdf>

³<https://www.guttmacher.org/report/pregnancies-births-abortion-in-united-states-1973-2020>

KEY FINDINGS

Figure 1
Pregnancy Rates by Age Group and Year among Females 19 or Younger, Arizona, 2012-2022

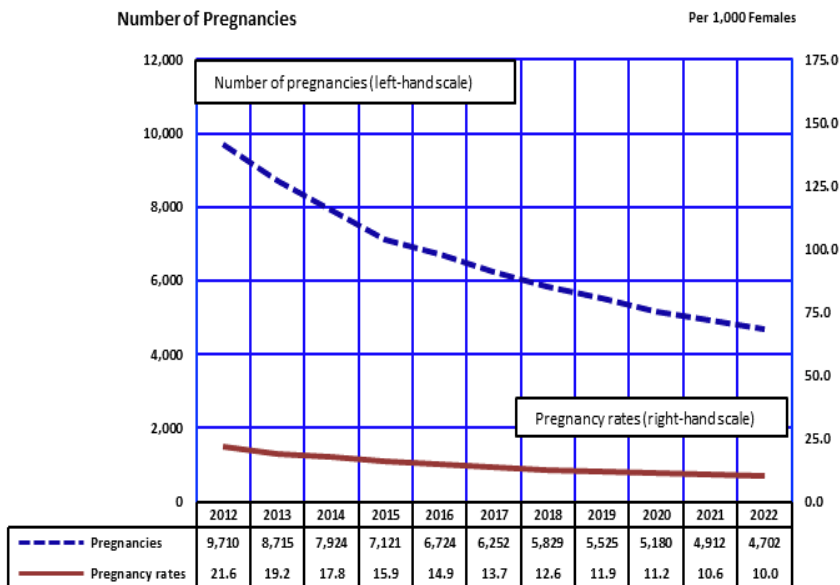


Teenage pregnancy rates dropped 53.7 percent overall from 2012 to 2022. (Figure 1, Table 2). The declines in teenage pregnancy have been much steeper for younger than for older teenagers. The rate for teenagers 15-17 years dropped steeply by 63.8 percent from 21.8 per 1,000 in 2012 to 7.9 in 2022. The rate for older teenagers (aged 18-19 years) fell by 47.3 percent from 70.2 per 1,000 in 2012 to 37.0 per 1,000 in 2022.

From 2012 to 2022, birth rate of teenagers 19 years old or younger declined; fetal losses remained stable at 0.1 per 1,000 females. The abortion rate was 3.4 in 2012, gradually decreasing to 2.5 per 1,000 females in 2018 and 2019. Subsequently, it increased to 2.6 in 2020 and further rose to 2.8 in 2021, then dropped to 2.3 in 2022. Any comparisons with previous years should consider the change in abortion reporting requirements in 2011 (Table 2).

Note: All rates are per 1,000 females in specified group.

Figure 2
Trends in the Number of Pregnancies and Pregnancy Rates among Females 19 or Younger, Arizona, 2012-2022



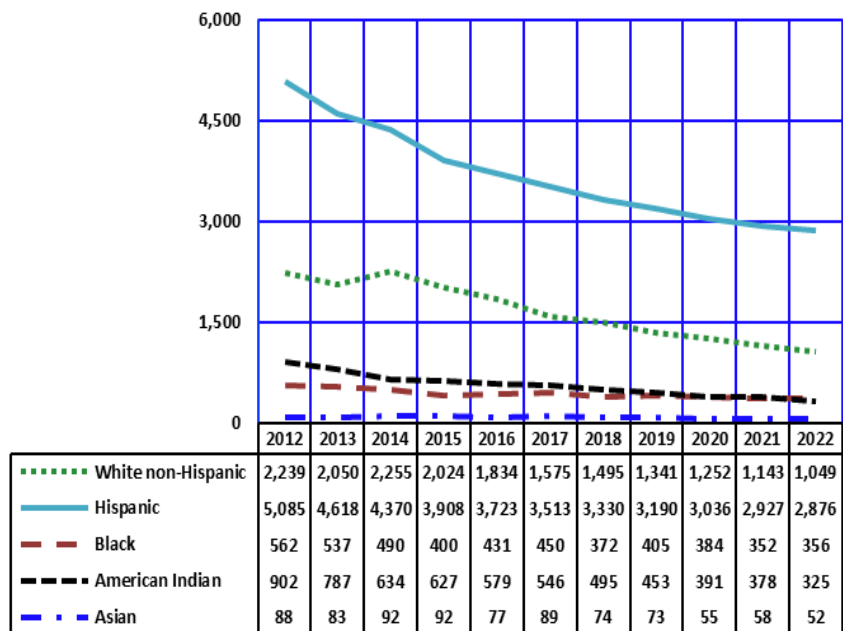
Trends in the number of pregnancies to teenage women do not always parallel the pregnancy rate. The teen pregnancy rate measures the proportion of teenagers becoming pregnant in a given year; in other words, the relative "risk for pregnancy" in a population "at risk." The number of pregnancies is, however, also determined by the size of the population "at risk," or in this case by the number of teenage females in the population.

The 2022 teen pregnancy rate of 10.0 per 1,000 was based on 4,702 pregnancies occurring among 469,280 females aged 10-19 years. The number of 4,702 teen pregnancies in 2022 was 4.3 percent lower than 2021 and was the lowest number of teen pregnancies since at least 1990 (Figure 2, Table 1).

Note: Pregnancy rate = the number of pregnancies per 1,000 females in specified group.

KEY FINDINGS

Figure 3
Trends in the Number of Pregnancies* by Race/Ethnicity among Females 19 or Younger, Arizona, 2012-2022

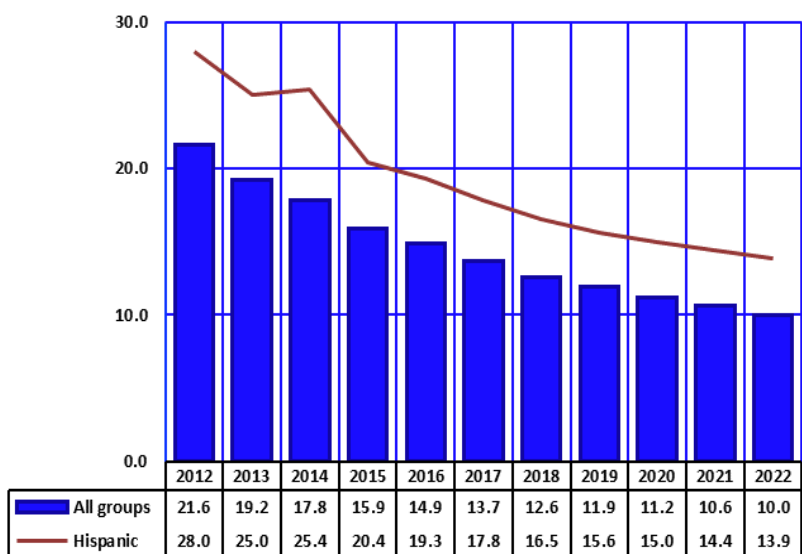


Among the total of 4,702 teenage pregnancies in 2022, 4,658 had racial/ethnic information. Hispanic or Latino females accounted for the highest percent of all pregnancies in this age group (61.2 percent), followed by White non-Hispanics (22.3 percent), Black or African Americans (7.6 percent), American Indian females (6.9 percent), and Asian or Pacific Islanders (1.1 percent).

From 2012 to 2022, the number of teen pregnancies declined particularly steeply for American Indians (64.0 percent) and White non-Hispanic (53.1 percent).

Note: The sum of live births + induced abortions + spontaneous fetal deaths.

Figure 4
Comparison of Pregnancy Rates by Year among Hispanic or Latinos and all Females 19 or Younger, Arizona, 2012-2022



The teen pregnancy rates for all race and ethnic groups were lower in 2022 than in 2012 (Figure 1). However, the temporal trends in annual teen pregnancy rates differed considerably by race/ethnicity.

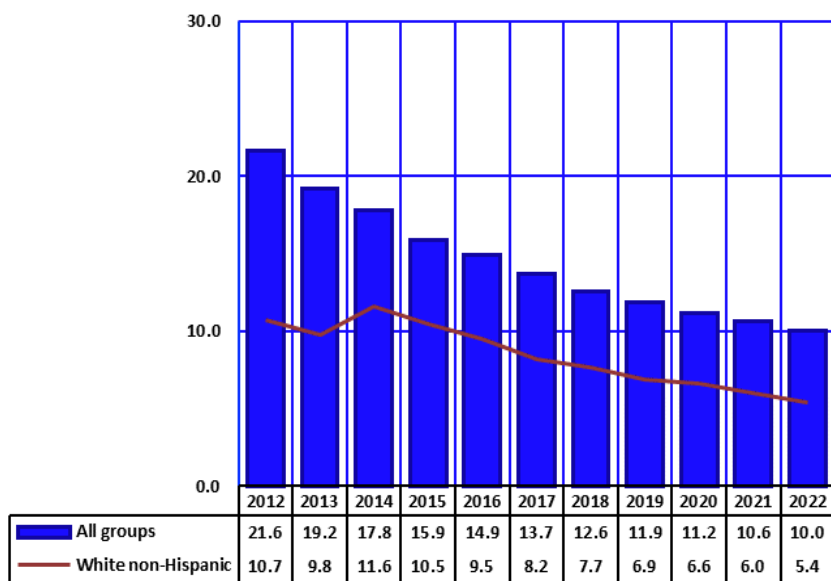
Figures 4, 5, 6, 7, and 8 reveal race/ethnicity-specific trends in teen pregnancy rates in Arizona in 2012-2022.

From 2012 to 2022, the teenage pregnancy rate for Hispanic or Latino women declined (50.4 percent) (Figure 4).

In each year from 2012 to 2022, the pregnancy rates of Hispanic or Latino females were consistently greater than the average rates for all females 19 years or younger in Arizona. In 2022, the Hispanic rate exceeded the average rate for all groups by 39.0 percent.

Note: All rates are per 1,000 females in specified group.

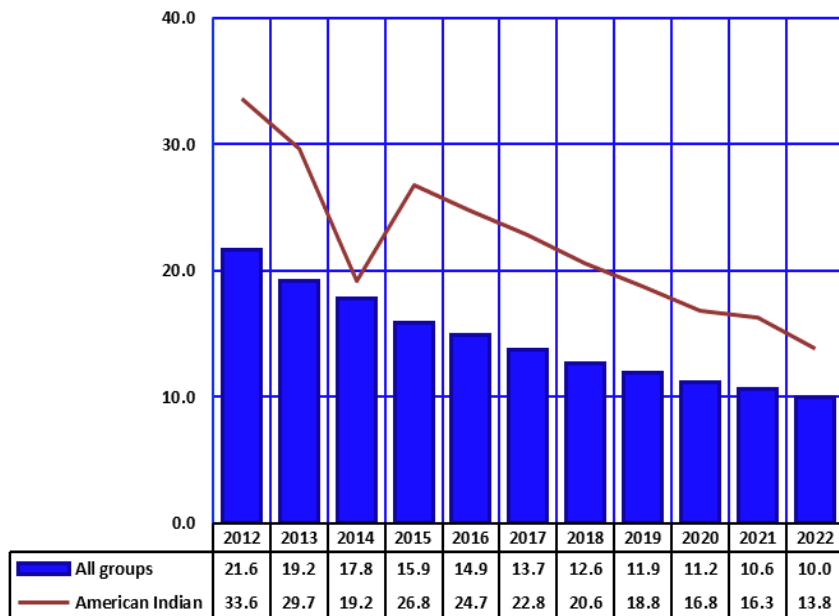
Figure 5
Comparison of Pregnancy Rates by Year among White non-Hispanics
and all Females 19 or Younger, Arizona, 2012-2022



The pregnancy rate for White non-Hispanics has gradually declined from 2012 to 2022 (49.5 percent), with the exception of slight increases in 2014 and 2015 (Figure 5). In each year from 2012 to 2022, the pregnancy rates for White non-Hispanic females were lower than the average rates for all females 19 years or younger in Arizona.

Note: All rates are per 1,000 females in specified group.

Figure 6
Comparison of Pregnancy Rates by Year among American Indian
or Alaska Natives and all Females 19 or Younger, Arizona, 2012-2022



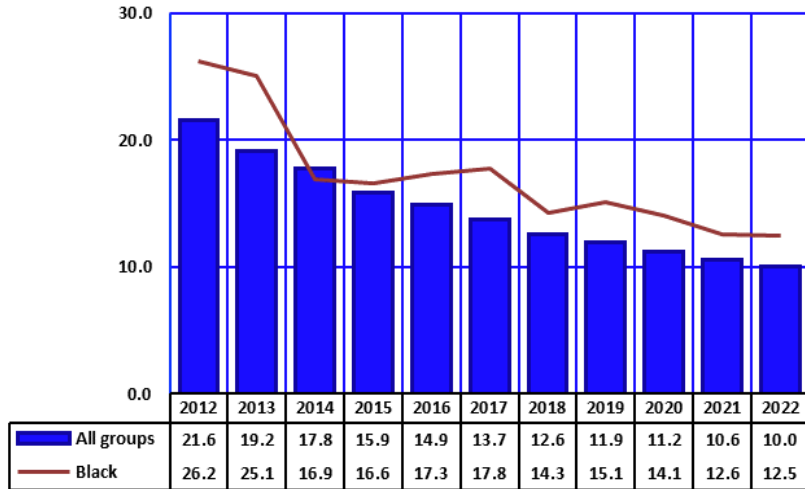
The pregnancy rate among American Indian females 19 years or younger varied somewhat erratically from 2012 to 2022, showing an 11.6 percent decrease from 2012 to 2013, a 35.4 percent decline from 2013 to 2014, and an increase in 2015 by 39.6 percent, and then a decline afterwards (Figure 6). Overall, there is a declining trend from 2012 to 2022 for American Indian teenage pregnancies, but the rate was higher than the average for all groups.

Note: Pregnancy rate = the number of pregnancies per 1,000 females in specified group.

KEY FINDINGS

Figure 7
Comparison of Pregnancy Rates by Year among Black or African Americans and all Females 19 or Younger, Arizona, 2012-2022

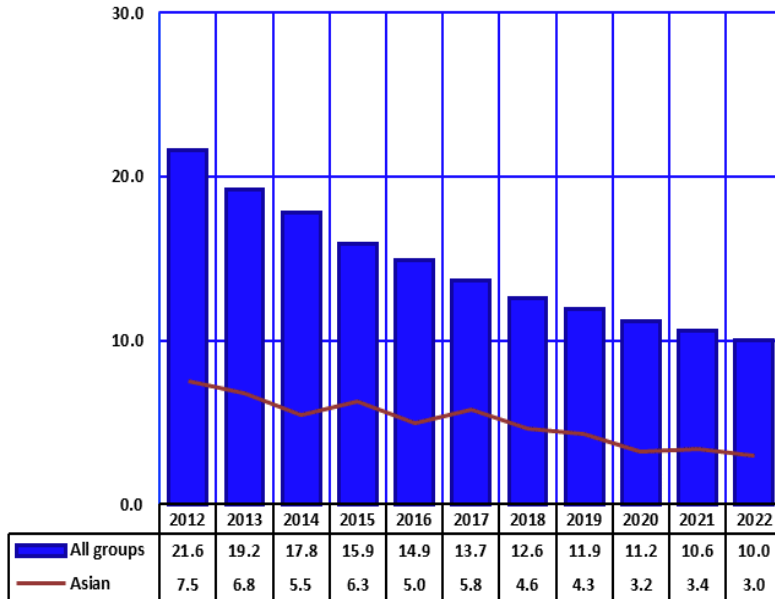
Pregnancy rates for Black or African American females 19 years or younger decreased from 26.2 per 1,000 in 2012 to 12.5 per 1,000 in 2022 (**Figure 7**). Excluding 2014, the pregnancy rates for Black or African American teenagers exceeded the pregnancy rate for all groups.



Note: All rates are per 1,000 females in specified group.

Figure 8
Comparison of Pregnancy Rates by Year among Asian or Pacific Islanders and all Females 19 or Younger, Arizona, 2012-2022

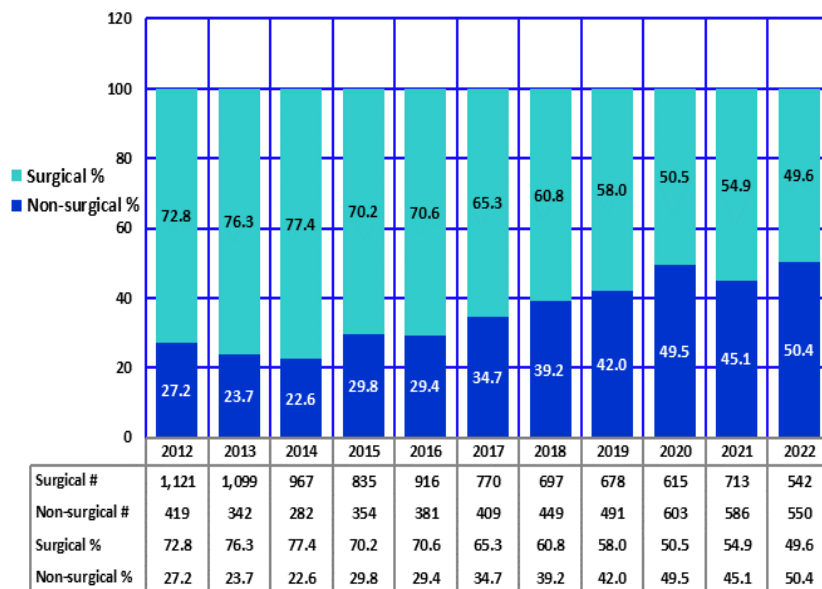
In each year from 2012 to 2022, the pregnancy rates for Asian or Pacific Islander females 19 years or younger were substantially lower than the average rates among all females 19 years or younger in Arizona (**Figure 8**). In 2022, the rate for Asian females (3.0 per 1,000) was 70.0 percent lower than the rate for all groups (10.0 per 1,000).



Note: All rates are per 1,000 females in specified group.

KEY FINDINGS

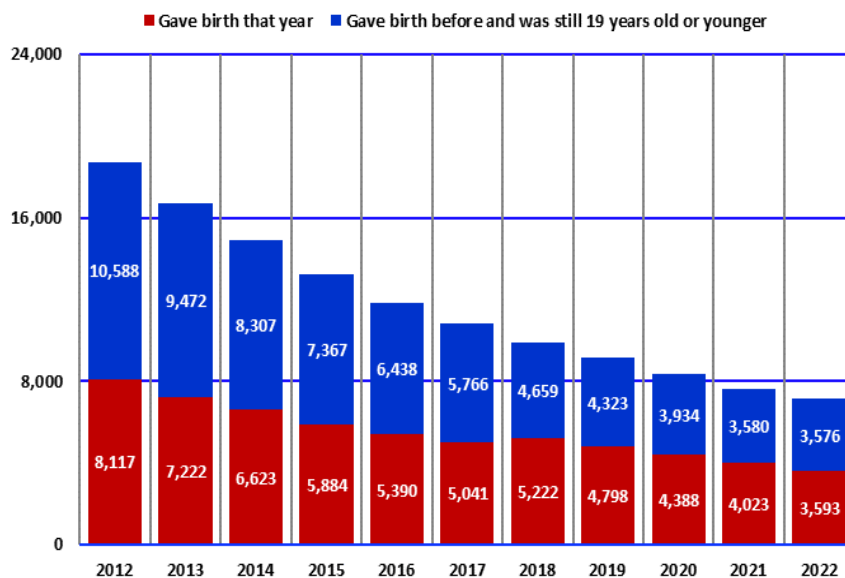
Figure 9
Proportional Contribution of Surgical and Non-Surgical Abortions
by Year among Females 19 or Younger, Arizona, 2012-2022



The proportion of non-surgical abortions to females 19 years or younger increased 85.3 percent from 2012 (27.2 percent) to 2022 (50.4 percent) in 2022, while the proportion of surgical abortions decreased 31.9 percent over that period (**Figure 9**).

Note: Non-surgical - Mifepristone, Methotrexate, RU486, etc.

Figure 10
Cumulative Number of Mothers who were 19 or Younger
in Arizona by Year, 2012-2022



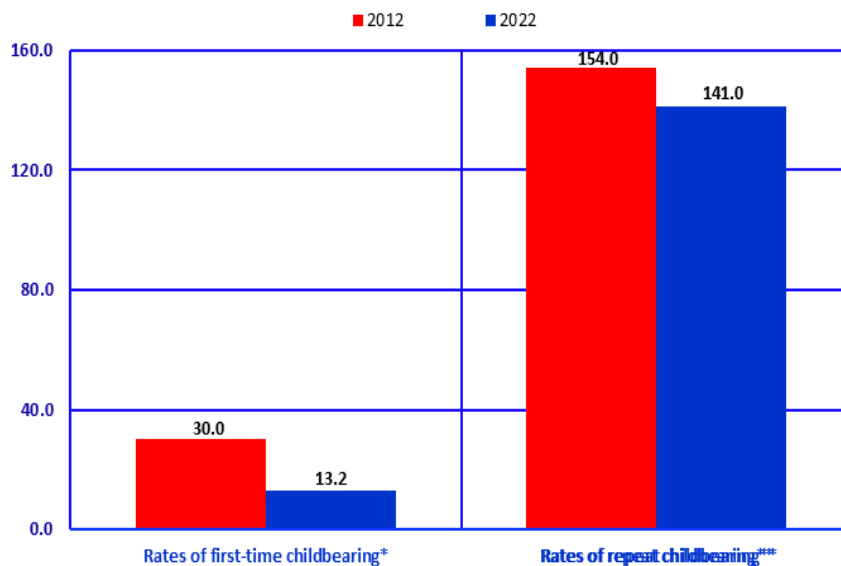
There were approximately 7,169 mothers under the age of 20 in Arizona in 2022. Among them there were the 3,593 who gave birth in 2022 and the 3,576 who gave birth prior to 2022 and were still 19 years old or younger in 2022 (**Figure 10, Table 13**). The cumulative number of mothers who were 19 years or younger in Arizona in 2022 decreased by 61.7 percent from 18,705 in 2012.

KEY FINDINGS

Figure 11
Rates of First and Repeat Births to Females 15-19 Years, Arizona, 2012 and 2022

The first birth rate for childless teenagers has dropped 56.0 percent from 30.0 first-time births per 1,000 females 15-19 years old in 2012 to 13.2 per 1,000 in 2022 (**Figure 12**).

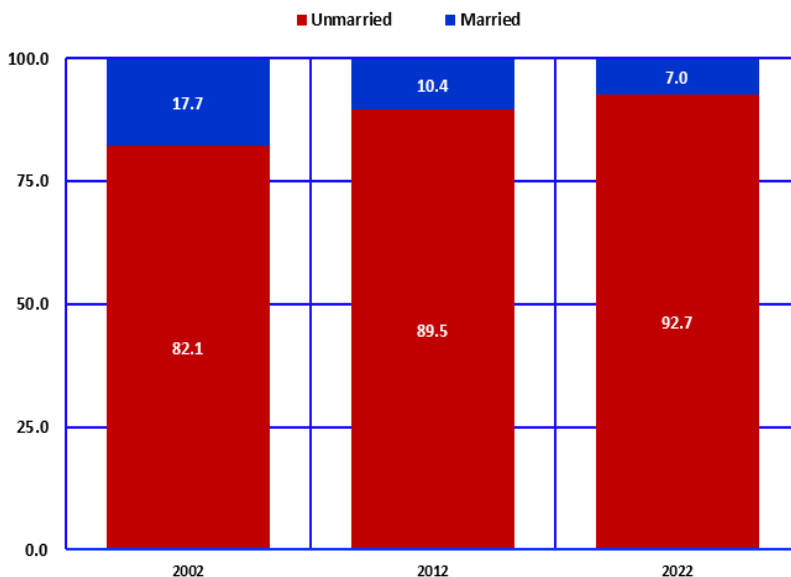
The repeat birth rates for teenagers who had already had a child decreased by 8.4 percent from 154.0 in 2012 to 141.0 per 1,000 females 15-19 years old in 2022 who had a previous birth (**Figure 12**).



Notes: * Number of first births per 1,000 females 15-19 years old who have not had a birth; ** Number of repeat births per 1,000 females 15-19 years old who have had a previous birth; See Appendix "How to compute rates of first and repeat childbearing."

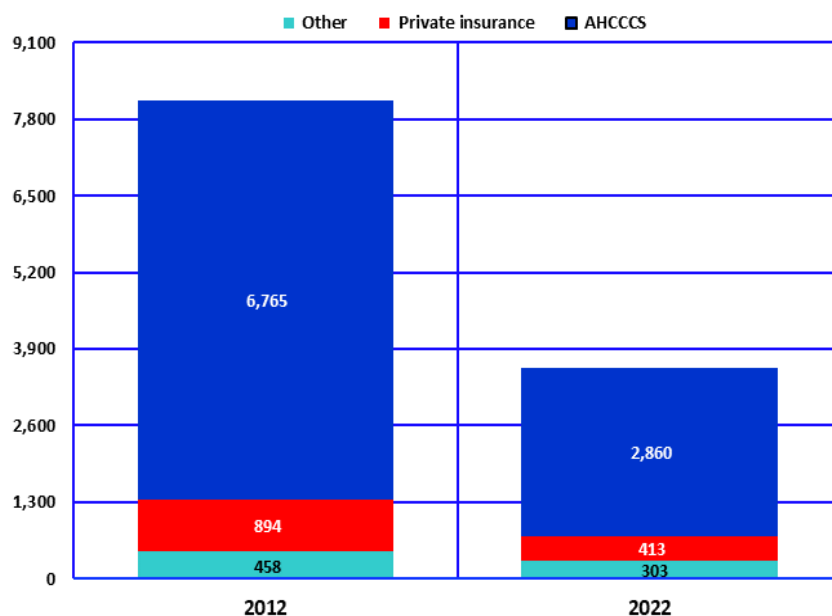
Figure 12
Births to Mothers 19 or Younger by Marital Status, Arizona, 2002, 2012, and 2022

Unwed mothers have accounted for an increasing annual proportion of births since the year 2002. Two decades ago, more than 8 out of 10 teenage mothers were unmarried (**Figure 13**). In 2022, non-marital births accounted for 92.7 percent of births to mothers 19 years or younger.



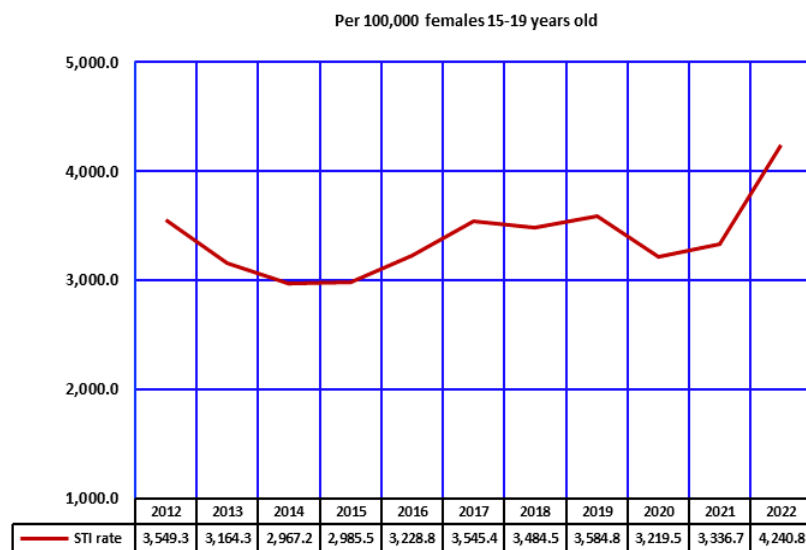
KEY FINDINGS

Figure 13
Number of Births to Mothers 19 or Younger by Payer, Arizona, 2012 and 2022



The total number of births to mothers 19 years or younger decreased by 55.9 percent from 8,117 in 2012 to 3,576 in 2022 (**Table 1**). In contrast, the proportional share of births paid for by the Arizona Health Care Cost Containment System (AHCCCS, the State's Medicaid program) decreased from 83.3 percent in 2012 to 80.0 percent in 2022 (**Figure 13**).

Figure 14
Trends in the Incidence of Sexually Transmitted Infections* among Females 15-19 Years, Arizona, 2012-2022



In each year from 2012-2022, except for 2013-2015, the total number of sexually transmitted infections (STI) among females aged 19 or younger exceeded 7,400 infections. The number decreased to the lowest number in the time period at 6,723 in 2014. In 2019 the number increased to 8,492, then dropped to 7,614 in 2020, but again increased in 2021 to 7,875 and to 10,183 in 2022, the highest of the time period (**Table 15**). Similarly, among females 15-19 years, the incidence rate per 100,000 females 15-19 years old decreased from 3,584.8 in 2019 to 3,219.5 in 2020 but again had an increase in 2021 to 3,336.7 and 4,240.8 in 2022. The 2022 incidence rate was also 19.5 percent higher than the rate of 2012.

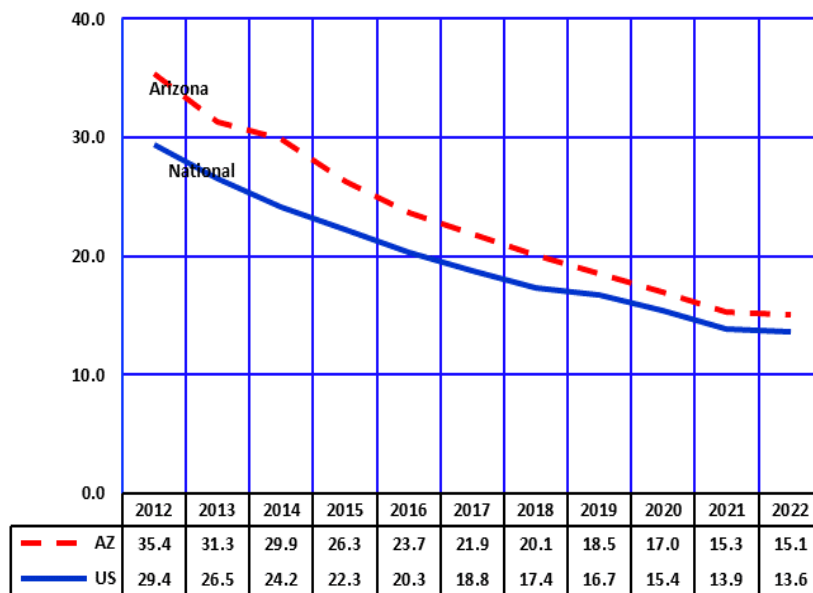
These STIs are a significant public health concern. *Chlamydia* can cause sterility in the affected mother as well as eye infections and pneumonia in the newborn. The complications of *Syphilis* are not to be underestimated as the disease can lead to blindness and maternal and/or infant death.

Note: * The sum of annually reported cases of gonorrhea, chlamydia, and early syphilis.
 Source: Bureau of Epidemiology and Disease Control Services, Office of Infectious Disease Services.

KEY FINDINGS

Figure 15
Birth Rates for Teenagers 15-19 Years, Nationally and in Arizona, 2012-2022**

In each year from 2012 to 2022, birth rates for Arizona teenagers 15-19 years old exceeded the rates of their national peers (**Figure 15, Table 11**). Both the Arizona and national teenage pregnancy rates have decreased from 2012 to 2022. The distance between Arizona and national teenage pregnancy rates has also decreased from 2012 to 2022. In 2012, Arizona's rate of 35.4 was 20.4% higher than the national rate, 29.4. By 2022, this difference reduced to 11.0%.

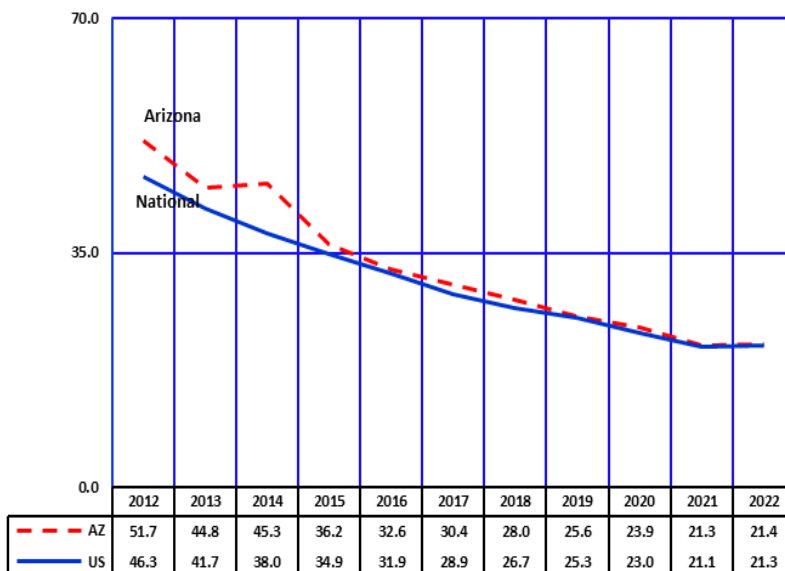


Note: The number of births per 1,000 females 15-19 years old.

Figure 16
Birth Rates for Hispanic or Latino Teenagers 15-19 Years, Nationally, and in Arizona, 2012-2022**

In the Arizona 2022 population of females aged 15-19, 43.8% identified as Hispanic or Latino. Within this age group, Hispanic or Latino females accounted for 62.3% of births in 2022, totaling 2,206 out of 3,543 (see **Table 6** and **Table 7**).

Birth rates among Hispanic or Latino teenage females have been higher in Arizona than nationally from 2012-2022, but the distance between these rates has shrunk. Birth rates among Hispanic or Latino teenage females were 11% higher in Arizona than the nation in 2012, and 1% higher than the national rate in 2022.



Notes: The number of births per 1,000 females 15-19 years old

TEENAGE PREGNANCY, ARIZONA, 2012-2022

DATA TABLES

**TABLE 1
PREGNANCIES AND PREGNANCY OUTCOME BY AGE GROUP AND YEAR,
FEMALES 19 OR YOUNGER, ARIZONA, 2012-2022**

Pregnancy outcome by year	Total, females 19 years or younger	10-14 years	15-19 years old		
			Total, 15-19 years	15-17 years	18-19 years
ALL PREGNANCIES					
2012	9,710	116	9,594	2,860	6,734
2013	8,715	91	8,624	2,385	6,239
2014	7,924	68	7,856	2,125	5,731
2015	7,121	66	7,055	1,887	5,168
2016	6,724	85	6,639	1,707	4,932
2017	6,252	65	6,187	1,554	4,633
2018	5,829	57	5,772	1,491	4,281
2019	5,525	51	5,474	1,401	4,073
2020	5,180	50	5,130	1,256	3,874
2021	4,912	63	4,849	1,131	3,718
2022	4,702	45	4,657	1,101	3,556
LIVE BIRTHS					
2012	8,117	67	8,050	2,430	5,620
2013	7,222	71	7,151	1,985	5,166
2014	6,623	46	6,577	1,770	4,807
2015	5,884	41	5,843	1,582	4,261
2016	5,390	54	5,336	1,420	3,916
2017	5,041	36	5,005	1,280	3,725
2018	4,659	29	4,630	1,212	3,418
2019	4,323	36	4,287	1,129	3,158
2020	3,934	28	3,906	995	2,911
2021	3,580	43	3,537	869	2,668
2022	3,576	33	3,543	854	2,689
ABORTIONS					
2012	1,539	48	1,491	414	1,077
2013	1,441	20	1,421	382	1,039
2014	1,249	22	1,227	330	897
2015	1,189	25	1,164	287	877
2016	1,297	31	1,266	277	989
2017	1,179	29	1,150	267	883
2018	1,146	28	1,118	271	847
2019	1,169	15	1,154	265	889
2020	1,218	20	1,198	251	947
2021	1,299	19	1,280	257	1,023
2022	1,092	12	1,080	238	842
FETAL LOSSES					
2012	50†	*	53	16	37
2013	52	0	52	18	34
2014	52	0	52	25	27
2015	48	0	48	18	30
2016	37	0	37	10	27
2017	32	0	32	7	25
2018	24	0	24	8	16
2019	33	0	33	7	26
2020	30†	*	26	10	16
2021	30†	*	30†	*	27
2022	34	0	34	9	25

Notes: * Cell suppressed due to non-zero count less than 6; † Sum rounded to nearest tens unit due to non-zero addend less than 6.

**TABLE 2
PREGNANCY RATES^a BY PREGNANCY OUTCOME, AGE GROUP, AND YEAR,
FEMALES 19 OR YOUNGER, ARIZONA, 2012-2022**

Pregnancy outcome by year	Total, females 19 years or younger	10-14 years	15-19 years old			
			Total, 15-19 years	15-17 years	18-19 years	
ALL PREGNANCIES						
2012	21.6	0.5	42.2	21.8	70.2	
2013	19.2	0.4	37.7	18.0	64.8	
2014	17.8	0.3	35.7	16.1	65.2	
2015	15.9	0.3	31.8	14.1	58.4	
2016	14.9	0.4	29.5	12.6	55.0	
2017	13.7	0.3	27.1	11.3	50.9	
2018	12.6	0.2	25.1	10.8	46.6	
2019	11.9	0.2	23.6	10.2	42.8	
2020	11.2	0.2	22.3	9.3	40.7	
2021	10.6	0.0	21.0	0.0	0.0	
2022	10.0	0.2	19.8	7.9	37.0	
LIVE BIRTHS						
2012	18.0	0.3	35.4	18.5	58.6	
2013	15.9	0.3	31.3	15.0	53.6	
2014	14.9	0.2	29.9	13.4	54.7	
2015	13.1	0.2	26.3	11.8	48.2	
2016	12.0	0.2	23.7	10.5	43.7	
2017	11.1	0.2	21.9	9.3	41.0	
2018	10.1	0.1	20.1	8.8	37.2	
2019	9.3	0.2	18.5	8.2	33.2	
2020	8.5	0.1	17.0	7.4	30.6	
2021	7.8	0.0	15.3	0.0	0.0	
2022	7.6	0.1	15.1	6.1	28.0	
ABORTIONS						
2012	3.4	0.2	6.6	3.1	11.2	
2013	3.2	0.1	6.2	2.9	10.8	
2014	2.8	0.1	5.6	2.5	10.2	
2015	2.7	0.1	5.2	2.1	9.9	
2016	2.9	0.1	5.6	2.0	11.0	
2017	2.6	0.1	5.0	1.9	9.7	
2018	2.5	0.1	4.9	2.0	9.2	
2019	2.5	0.1	5.0	1.9	9.3	
2020	2.6	0.1	5.2	1.9	9.9	
2021	2.8	0.0	5.5	0.0	0.0	
2022	2.3	0.1	4.6	1.7	8.8	
FETAL LOSSES						
2012	0.1	**	0.2	0.1	0.4	
2013	0.1	0.0	0.2	0.1	0.4	
2014	0.1	0.0	0.2	0.2	0.3	
2015	0.1	0.0	0.2	0.1	0.3	
2016	0.1	0.0	0.2	0.1	0.3	
2017	0.1	0.0	0.1	0.1	0.3	
2018	0.1	0.0	0.1	0.1	0.2	
2019	0.1	0.0	0.1	0.1	0.3	
2020	0.1	**	0.1	0.1	0.2	
2021	0.1	**	0.1	**	0.3	
2022	0.1	0.0	0.1	0.1	0.3	

Notes: ** Cell suppressed due to rate/ratio/percent based on non-zero count less than 6; ^a The number of pregnancies (live births + abortions + fetal deaths) per 1,000 females in specified age group; 0.0: Quantity more than zero but less than 0.05.

**TABLE 3
LIVE BIRTHS TO FEMALES 19 OR YOUNGER BY AGE GROUP, RACE/ETHNICITY,
AND YEAR, ARIZONA, 2012-2022**

Racial/ethnic group and year	Total, females 19 years or younger	10-14 years	15-19 years old		
			Total, 15-19 years	15-17 years	18-19 years
WHITE NON-HISPANIC					
2012	1,977	8	1,969	475	1,494
2013	1,781	8	1,773	365	1,408
2014	1,757	8	1,749	344	1,405
2015	1,530†	*	1,526	339	1,187
2016	1,347	8	1,339	283	1,056
2017	1,160†	*	1,163	224	939
2018	1,090†	*	1,085	213	872
2019	1,000†	*	995	214	781
2020	890†	*	890	166	724
2021	816	10	806	147	659
2022	770†	*	765	148	617
HISPANIC OR LATINO					
2012	4,627	46	4,581	1,528	3,053
2013	4,080	47	4,033	1,244	2,789
2014	3,813	23	3,790	1,115	2,675
2015	3,409	28	3,381	972	2,409
2016	3,136	32	3,104	877	2,227
2017	2,974	21	2,953	816	2,137
2018	2,794	17	2,777	795	1,982
2019	2,594	22	2,572	711	1,861
2020	2,413	22	2,391	650	1,741
2021	2,183	21	2,162	566	1,596
2022	2,227	21	2,206	570	1,636
BLACK OR AFRICAN AMERICAN					
2012	540†	*	539	159	380
2013	507	6	501	122	379
2014	390†	*	389	102	287
2015	310†	*	311	77	234
2016	320†	*	313	81	232
2017	330†	*	324	71	253
2018	270†	*	270	60	210
2019	280†	*	276	73	203
2020	260†	*	256	56	200
2021	220†	*	214	43	171
2022	260†	*	253	60	193
AMERICAN INDIAN OR ALASKA NATIVE					
2012	890	7	883	251	632
2013	775	8	767	243	524
2014	602	9	593	196	397
2015	569	7	562	177	385
2016	540	11	529	167	362
2017	519	8	511	163	348
2018	463	7	456	134	322
2019	410	6	404	124	280
2020	340†	*	338	112	226
2021	342	7	335	108	227
2022	294	7	287	69	218
ASIAN OR PACIFIC ISLANDER					
2012	80†	*	78	17	61
2013	80†	*	77	11	66
2014	60†	*	56	13	43
2015	63	0	63	17	46
2016	51	0	51	12	39
2017	60†	*	54	6	48
2018	42	0	42	10	32
2019	40	0	40	7	33
2020	31	0	31	11	20
2021	20†	*	20†	*	15
2022	32	0	32	7	25

Notes: * Cell suppressed due to non-zero count less than 6; † Sum rounded to nearest tens unit due to non-zero addend less than 6.

**TABLE 4
ABORTIONS TO FEMALES 19 OR YOUNGER BY AGE GROUP, RACE/ETHNICITY,
AND YEAR, ARIZONA, 2012-2022**

Racial/ethnic group and year	Total, females 19 years or younger	10-14 years	15-19 years old		
			Total, 15-19 years	15-17 years	18-19 years
WHITE NON-HISPANIC					
2012	238	6	232	65	167
2013	257	6	251	66	185
2014	488	7	481	133	348
2015	488	6	482	111	371
2016	476	11	465	96	369
2017	400	7	393	93	300
2018	396	11	385	93	292
2019	340†	*	331	75	256
2020	360†	*	354	78	276
2021	320†	*	313	64	249
2022	270†	*	270	52	218
HISPANIC OR LATINO					
2012	441	12	429	138	291
2013	509	6	503	136	367
2014	531	7	524	134	390
2015	467	13	454	118	336
2016	564	8	556	131	425
2017	526	19	507	117	390
2018	528	11	517	128	389
2019	581	8	573	136	437
2020	611	12	599	113	486
2021	730	8	722	140	582
2022	634	6	628	149	479
BLACK OR AFRICAN AMERICAN					
2012	10†	*	10†	6	*
2013	20†	*	22	8	14
2014	90†	*	88	34	54
2015	90†	*	83	25	58
2016	110†	*	109	23	86
2017	120†	*	116	33	83
2018	100†	*	93	28	65
2019	120	0	120	22	98
2020	120†	*	123	31	92
2021	130†	*	123	21	102
2022	92	0	92	22	70
AMERICAN INDIAN OR ALASKA NATIVE					
2012	0†	0	0†	*	*
2013	8	0	10†	*	*
2014	30†	*	20†	*	18
2015	50†	*	47	13	34
2016	40†	*	36	11	25
2017	20†	*	20†	*	18
2018	30†	*	30†	*	25
2019	40†	*	36	12	24
2020	40†	*	38	8	30
2021	30†	*	33	15	18
2022	28	0	30†	*	23
ASIAN OR PACIFIC ISLANDER					
2012	9	0	10†	*	7
2013	0†	0	0†	*	*
2014	40†	*	34	10	24
2015	28	0	30†	*	25
2016	30†	*	30†	*	22
2017	34	0	30†	*	31
2018	30†	*	30†	*	30
2019	32	0	30†	*	28
2020	23	0	20†	*	20
2021	40†	*	35	7	28
2022	20†	*	20†	*	15

Notes: * Cell suppressed due to non-zero count less than 6; † Sum rounded to nearest tens unit due to non-zero addend less than 6.

**TABLE 5
NUMBER OF PREGNANCIES^a BY PREGNANCY OUTCOME, RACE/ETHNICITY, AND YEAR AMONG FEMALES AGED 17 AND YOUNGER
WITH RATES^b, ARIZONA, 2012-2022**

Race/ethnicity Pregnancy outcome	2012	2013	2014	2015	2016	2017	2018	2019	2020	2021	2022	2022 Rates
WHITE^c NON-HISPANIC, total:	564	448	496	462	401	327	325	298	252	228	207	1.4
Births	483	373	352	344	291	225	217	218	167	157	149	1.0
Abortions	71	72	140	117	107	100	104	79	83	69	56	0.4
HISPANIC OR LATINO, total:	1,728	1,443	1,292	1,144	1,055	976	953	882	802	737	750	4.5
Births	1,574	1,291	1,138	1,000	909	837	812	733	672	587	591	3.6
Abortions	150	142	141	131	139	136	139	144	125	148	155	0.9
BLACK OR AFRICAN AMERICAN, total:	174	140	145	106	111	111	94	100	91	72	88	3.9
Births	164	128	107	78	84	76	61	77	57	46	64	2.8
Abortions	9	9	36	27	27	34	31	22	32	25	22	1.0
AMERICAN INDIAN OR ALASKA NATIVE, total:	260 [†]	260 [†]	217	204	191	180 [†]	147	147	128	132	80 [†]	4.3
Births	258	251	205	184	178	171	141	130	116	115	76	4.0
Abortions	*	*	7	17	13	*	6	14	9	16	*	**
ASIAN OR PACIFIC ISLANDER, total:	20 [†]	20 [†]	25	20 [†]	20 [†]	10 [†]	10 [†]	10 [†]	10 [†]	15	10 [†]	0.9
Births	18	13	14	17	12	7	10	7	11	7	7	0.5
Abortions	*	*	11	*	*	*	*	*	*	8	*	**
ALL RACIAL/ETHNIC GROUPS^d, total:	2,976	2,476	2,193	1,953	1,792	1,619	1,548	1,452	1,306	1,194	1,146	3.1
Births	2,497	2,056	1,816	1,623	1,474	1,316	1,241	1,165	1,023	912	887	2.4
Abortions	463	402	352	312	308	296	299	280	271	276	250	0.7
Pregnancy rate, total:	8.4	6.9	6.1	5.4	5.0	4.4	4.2	3.9	3.6	3.3	3.1	
Fertility rate^e	7.1	5.8	5.1	4.5	4.1	3.6	3.4	3.1	2.8	2.5	2.4	
Abortion rate	1.3	1.1	1.0	0.9	0.9	0.8	0.8	0.8	0.7	0.8	0.7	

Notes: * Cell suppressed due to non-zero count less than 6; ** Cell suppressed due to rate/ratio/percent based on non-zero count less than 6; [†] Sum rounded to nearest tens unit due to non-zero addend less than 6; ^a Fetal deaths are included in the total counts of pregnancies; ^b All rates per 1,000 females 10-17 years old; ^c Not of Hispanic origin; ^d Includes other and unspecified ethnicity; ^e Number of births per 1,000 females 10-17 years old.

**TABLE 6
NUMBER OF PREGNANCIES^a BY PREGNANCY OUTCOME, RACE/ETHNICITY, AND YEAR AMONG FEMALES 15-17 YEARS OLD
WITH RATES^b, ARIZONA, 2012-2022**

Race/ethnicity Pregnancy outcome	2012	2013	2014	2015	2016	2017	2018	2019	2020	2021	2022	2022 Rates
WHITE^c NON-HISPANIC, total:	549	434	481	451	382	319	310	290	246	213	202	3.5
Births	475	365	344	339	283	224	213	214	166	147	148	2.6
Abortions	65	66	133	111	96	93	93	75	78	64	52	0.9
HISPANIC OR LATINO, total:	1,670	1,390	1,262	1,103	1,015	936	925	852	767	707	723	11.8
Births	1,528	1,244	1,115	972	877	816	795	711	650	566	570	9.3
Abortions	138	136	134	118	131	117	128	136	113	140	149	2.4
BLACK OR AFRICAN AMERICAN, total:	166	133	138	103	104	105	90	96	88	65	84	10.3
Births	159	122	102	77	81	71	60	73	56	43	60	7.3
Abortions	6	8	34	25	23	33	28	22	31	21	22	2.7
AMERICAN INDIAN OR ALASKA NATIVE, total:	250 [†]	250 [†]	210 [†]	193	178	170 [†]	140 [†]	136	123	124	80 [†]	10.8
Births	251	243	196	177	167	163	134	124	112	108	69	9.9
Abortions	*	*	*	13	11	*	*	12	8	15	*	**
ASIAN OR PACIFIC ISLANDER, total:	20 [†]	10 [†]	23	20 [†]	20 [†]	10 [†]	10 [†]	10 [†]	10 [†]	10 [†]	10 [†]	2.2
Births	17	11	13	17	12	6	10	7	11	*	7	1.4
Abortions	*	*	10	*	*	*	*	*	*	7	*	**
ALL RACIAL/ETHNIC GROUPS^d, total:	2,860	2,385	2,125	1,887	1,707	1,554	1,491	1,401	1,256	1,131	1,101	7.9
Births	2,430	1,985	1,770	1,582	1,420	1,280	1,212	1,129	995	869	854	6.1
Abortions	414	382	330	287	277	267	271	265	251	257	238	1.7
Pregnancy rate, total:	21.8	18.0	16.1	14.1	12.6	11.3	10.8	10.2	9.3	8.3	7.9	
Fertility rate^e	18.5	15.0	13.4	11.8	10.5	9.3	8.8	8.2	7.4	6.4	6.1	
Abortion rate	3.1	2.9	2.5	2.1	2.0	1.9	2.0	1.9	1.9	1.9	1.7	

Notes: * Cell suppressed due to non-zero count less than 6; ** Cell suppressed due to rate/ratio/percent based on non-zero count less than 6; [†] Sum rounded to nearest tens unit due to non-zero addend less than 6; ^a Fetal deaths are included in the total counts of pregnancies; ^b All rates per 1,000 females 15-17 years old; ^c Not of Hispanic origin; ^d Includes other and unspecified ethnicity; ^e Number of births per 1,000 females 15-17 years old.

**TABLE 7
NUMBER OF PREGNANCIES^a BY PREGNANCY OUTCOME, RACE/ETHNICITY, AND YEAR AMONG FEMALES 18-19 YEARS OLD
WITH RATES^b, ARIZONA, 2012-2022**

Race/ethnicity Pregnancy outcome	2012	2013	2014	2015	2016	2017	2018	2019	2020	2021	2022	2022 Rates
WHITE^c NON-HISPANIC, total:	1,675	1,602	1,759	1,562	1,433	1,248	1,170	1,043	1,000	915	842	20.7
Births	1,494	1,408	1,405	1,187	1,056	939	872	781	724	659	617	15.2
Abortions	167	185	348	371	369	300	292	256	276	249	218	5.4
HISPANIC OR LATINO, total:	3,357	3,175	3,078	2,764	2,668	2,537	2,377	2,308	2,234	2,190	2,126	51.1
Births	3,053	2,789	2,675	2,409	2,227	2,137	1,982	1,861	1,741	1,596	1,636	39.4
Abortions	291	367	390	336	425	390	389	437	486	582	479	11.5
BLACK OR AFRICAN AMERICAN, total:	390 [†]	397	345	294	320	339	278	305	293	280	268	46.4
Births	380	379	287	234	232	253	210	203	200	171	193	33.4
Abortions	*	14	54	58	86	83	65	98	92	102	70	12.1
AMERICAN INDIAN OR ALASKA NATIVE, total:	640 [†]	530 [†]	417	423	388	369	347	309	263	246	243	54.7
Births	632	524	397	385	362	348	322	280	226	227	218	49.1
Abortions	*	*	18	34	25	18	25	24	30	18	23	5.2
ASIAN OR PACIFIC ISLANDER, total:	68	70 [†]	67	72	61	79	62	62	41	43	40	10.9
Births	61	66	43	46	39	48	32	33	20	15	25	6.8
Abortions	7	*	24	25	22	31	30	28	20	28	15	4.1
ALL RACIAL/ETHNIC GROUPS^d, total:	6,734	6,239	5,731	5,168	4,932	4,633	4,281	4,073	3,874	3,718	3,556	37.0
Births	5,620	5,166	4,807	4,261	3,916	3,725	3,418	3,158	2,911	2,668	2,689	28.0
Abortions	1,077	1,039	897	877	989	883	847	889	947	1,023	842	8.8
Pregnancy rate, total:	70.2	64.8	65.2	58.4	55.0	50.9	46.6	42.8	40.7	39.3	37.0	
Fertility rate^e	58.6	53.6	54.7	48.2	43.7	41.0	37.2	33.2	30.6	28.2	28.0	
Abortion rate	11.2	10.8	10.2	9.9	11.0	9.7	9.2	9.3	9.9	10.8	8.8	

Notes: * Cell suppressed due to non-zero count less than 6; [†] Sum rounded to nearest tens unit due to non-zero addend less than 6; ^a Fetal deaths are included in the total counts of pregnancies; ^b All rates per 1,000 females 18-19 years old; ^c Not of Hispanic origin; ^d Includes other and unspecified ethnicity; ^e Number of births per 1,000 females 18-19 years old.

**TABLE 8
NUMBER OF PREGNANCIES^a BY PREGNANCY OUTCOME, RACE/ETHNICITY, AND YEAR AMONG FEMALES 19 AND YOUNGER,
WITH RATES^b, ARIZONA, 2012-2022**

Race/ethnicity Pregnancy outcome	2012	2013	2014	2015	2016	2017	2018	2019	2020	2021	2022	2022 Rates
WHITE^c NON-HISPANIC, total:	2,239	2,050	2,255	2,024	1,834	1,575	1,495	1,341	1,252	1,143	1,049	5.4
Births	1,977	1,781	1,757	1,531	1,347	1,164	1,089	999	891	816	766	4.0
Abortions	238	257	488	488	476	400	396	335	359	318	274	1.4
HISPANIC OR LATINO, total:	5,085	4,618	4,370	3,908	3,723	3,513	3,330	3,190	3,036	2,927	2,876	13.9
Births	4,627	4,080	3,813	3,409	3,136	2,974	2,794	2,594	2,413	2,183	2,227	10.8
Abortions	441	509	531	467	564	526	528	581	611	730	634	3.1
BLACK OR AFRICAN AMERICAN, total:	562	537	490	400	431	450	372	405	384	352	356	12.5
Births	544	507	394	312	316	329	271	280	257	217	257	9.0
Abortions	14	23	90	85	113	117	96	120	124	127	92	3.2
AMERICAN INDIAN OR ALASKA NATIVE, total:	900 [†]	787	634	627	579	546	495	453	391	378	325	13.8
Births	890	775	602	569	540	519	463	410	342	342	294	12.5
Abortions	*	8	25	51	38	23	31	38	39	34	28	1.2
ASIAN OR PACIFIC ISLANDER, total:	88	80 [†]	92	92	77	89	74	73	55	58	52	3.0
Births	79	79	57	63	51	55	42	40	31	22	32	1.8
Abortions	9	*	35	28	26	34	32	32	23	36	20	1.1
ALL RACIAL/ETHNIC GROUPS^d, total:	9,710	8,715	7,924	7,121	6,724	6,252	5,829	5,525	5,180	4,912	4,702	10.0
Births	8,117	7,222	6,623	5,884	5,390	5,041	4,659	4,323	3,934	3,580	3,576	7.6
Abortions	1,539	1,441	1,249	1,189	1,297	1,179	1,146	1,169	1,218	1,299	1,092	2.3
Pregnancy rate, total:	21.6	19.2	17.8	15.9	14.9	13.7	12.6	11.9	11.2	10.6	10.0	
Fertility rate^e	18.0	15.9	14.9	13.1	12.0	11.1	10.1	9.3	8.5	7.8	7.6	
Abortion rate	3.4	3.2	2.8	2.7	2.9	2.6	2.5	2.5	2.6	2.8	2.3	

Notes: * Cell suppressed due to non-zero count less than 6; [†] Sum rounded to nearest tens unit due to non-zero addend less than 6; ^a Fetal deaths are included in the total counts of pregnancies; ^b All rates per 1,000 females 19 or younger; ^c Not of Hispanic origin; ^d Includes other and unspecified ethnicity; ^e Number of births per 1,000 females 19 or younger.

**TABLE 9
TRENDS IN PREGNANCY RATES^a BY COUNTY OF RESIDENCE AMONG FEMALES 10-17 AND 18-19 YEARS OLD,
ARIZONA, 2012-2022**

	ARIZONA	APACHE	COCHISE	COCONINO	GILA	GRAHAM	GREENLEE	LA PAZ	MARICOPA	MOHAVE	NAVAJO	PIMA	PINAL	SANTA CRUZ	YAVAPAI	YUMA	
10-19 YEARS	2012	21.6	24.0	18.0	29.9	29.2	18.9	25.3	20.7	19.2	29.8	21.4	20.6	29.0	18.7	29.0	
	2013	19.2	18.9	16.2	32.0	26.7	28.8	37.6	18.4	15.8	23.3	19.2	16.4	20.6	16.7	25.1	
	2014	17.8	17.7	18.4	14.7	29.0	27.1	26.8	33.4	17.4	17.5	21.8	16.9	15.5	20.0	17.2	19.7
	2015	15.9	13.7	20.0	14.4	25.6	23.7	20.5	22.9	15.3	14.7	21.4	15.0	15.1	13.6	16.4	18.2
	2016	14.9	17.2	18.8	13.0	31.3	18.2	21.5	20.7	14.4	13.5	19.3	14.2	12.9	18.1	13.5	17.5
	2017	13.7	15.7	14.3	12.6	22.0	16.6	15.3	18.0	13.2	13.6	19.5	13.1	13.5	12.7	15.1	13.9
	2018	12.6	13.0	14.4	9.2	21.6	17.6	11.0	20.2	11.9	11.2	16.2	11.6	12.4	11.9	13.3	17.7
	2019	11.9	13.4	11.2	7.2	20.5	14.9	8.4	18.2	11.2	12.0	14.4	11.8	11.5	11.0	12.3	15.9
	2020	11.2	11.1	15.1	6.3	17.8	16.1	15.6	28.1	10.9	9.0	15.0	10.5	11.4	12.7	11.6	14.2
	2021	10.6	11.3	13.0	8.2	16.6	16.5	10.9	26.7	10.1	11.2	13.7	9.8	11.6	12.3	9.6	13.9
	2022	10.0	10.7	11.9	5.3	12.8	13.0	**	19.3	9.6	11.3	12.2	9.2	11.4	16.0	9.5	14.5
18-19 YEARS	2012	70.2	79.6	80.2	33.4	105.8	95.2	87.7	69.3	69.6	115.7	61.9	82.2	97.9	64.6	90.1	
	2013	64.8	68.5	65.2	30.8	133.0	103.2	108.8	146.1	64.2	59.4	92.9	54.6	67.7	92.4	83.0	
	2014	65.2	66.4	66.7	25.8	114.8	108.7	142.9	126.4	68.3	79.5	81.0	48.7	70.8	66.9	75.5	72.0
	2015	58.4	43.9	77.0	25.9	105.7	95.0	86.2	77.3	59.5	67.9	78.9	45.9	71.4	50.9	64.5	69.9
	2016	55.0	68.1	73.0	21.3	114.2	70.6	84.5	94.9	56.4	63.2	70.2	43.5	58.9	69.3	55.1	63.1
	2017	50.9	62.1	55.4	22.6	97.0	61.5	67.2	80.5	51.7	67.4	76.3	39.1	64.0	61.0	61.3	50.3
	2018	46.6	58.2	56.6	14.9	84.3	60.8	46.9	80.0	46.5	52.5	64.4	35.3	55.2	53.1	52.8	63.3
	2019	42.8	55.2	38.3	11.0	77.4	52.6	**	80.2	43.1	55.8	55.9	35.2	50.8	37.8	46.5	60.2
	2020	40.7	43.6	61.5	9.7	75.2	51.9	92.8	144.2	41.7	39.2	67.2	32.3	47.5	53.0	50.5	50.0
	2021	39.3	39.7	47.2	12.6	59.0	67.2	60.6	133.3	39.9	48.8	57.1	30.4	55.2	41.7	36.2	48.8
	2022	37.0	49.0	42.2	9.6	54.3	51.8	**	66.7	37.3	54.2	57.4	28.4	51.8	55.9	40.0	50.4
10-17 YEARS	2012	8.4	7.7	9.2	8.3	11.7	12.2	**	8.9	8.1	6.3	10.4	8.0	7.2	15.0	7.4	12.6
	2013	6.9	8.1	6.9	7.3	10.7	10.0	10.8	12.8	6.6	4.4	7.1	7.4	5.3	7.7	5.4	10.1
	2014	6.1	6.0	6.4	7.1	9.9	9.5	**	11.6	5.9	4.8	8.8	6.6	5.1	9.1	4.3	6.7
	2015	5.4	6.8	6.3	6.2	9.5	8.1	**	10.3	5.2	3.9	9.7	5.2	4.7	5.2	5.3	5.7
	2016	5.0	6.5	6.3	6.9	13.7	6.4	**	**	4.6	3.4	8.8	4.8	4.3	6.9	3.8	6.7
	2017	4.4	6.1	5.0	5.2	5.9	6.7	**	**	4.1	3.0	8.1	4.9	3.8	2.3	4.1	5.2
	2018	4.2	3.1	4.6	4.9	8.4	7.4	**	**	3.9	2.9	6.6	3.9	3.9	2.7	4.3	7.0
	2019	3.9	3.8	4.3	4.2	9.2	5.5	**	**	3.6	2.9	6.1	4.1	3.6	4.8	4.4	5.3
	2020	3.6	3.7	4.4	3.4	6.5	7.8	**	**	3.4	2.7	5.0	3.2	4.1	3.4	2.5	5.6
	2021	3.3	5.2	4.7	4.8	8.0	5.2	**	**	2.9	3.6	5.6	3.0	3.0	5.7	3.5	5.3
	2022	3.1	2.3	4.5	1.9	4.4	4.3	**	**	2.8	2.5	3.7	2.9	3.5	7.0	2.6	5.6

Notes: ** Cell suppressed due to rate/ratio/percent based on count less than 6, ^a Number of pregnancies per 1,000 females in specified group.

**TABLE 10
LIVE BIRTHS TO FEMALES 19 OR YOUNGER AS A PERCENTAGE OF TOTAL LIVE BIRTHS BY AREA, RACE/ETHNICITY,
AND YEAR, ARIZONA, 2012-2022**

Group	2012	2013	2014	2015	2016	2017	2018	2019	2020	2021	2022
ARIZONA, TOTAL^a											
# Births (all ages)	85,725	84,963	86,648	85,024	84,404	81,664	80,539	79,183	76,781	77,857	78,355
# Births to teenagers	8,117	7,222	6,623	5,884	5,390	5,041	4,659	4,323	3,934	3,580	3,576
% Births to teenagers	9.5	8.5	7.6	6.9	6.4	6.2	5.8	5.5	5.1	4.6	4.6
URBAN COUNTIES^b											
# Births (all ages)	74,128	73,493	74,677	73,547	72,899	70,780	69,890	68,797	66,845	67,950	68,504
# Births to teenagers	6,697	6,011	5,447	4,856	4,412	4,139	3,860	3,610	3,273	2,939	2,964
% Births to teenagers	9.0	8.2	7.3	6.6	6.1	5.8	5.5	5.3	4.9	4.3	4.3
RURAL COUNTIES											
# Births (all ages)	11,597	11,470	11,955	11,467	11,502	10,873	10,640	10,368	9,881	9,810	9,798
# Births to teenagers	1,420	1,211	1,175	1,028	978	901	799	713	661	640	611
% Births to teenagers	12.2	10.6	9.8	9.0	8.5	8.3	7.5	6.9	6.7	6.5	6.2
WHITE NON-HISPANIC											
# Births (all ages)	38,670	38,220	40,097	38,180	37,762	35,685	34,909	34,118	33,101	33,851	32,792
# Births to teenagers	1,977	1,781	1,757	1,531	1,347	1,164	1,089	999	891	816	766
% Births to teenagers	5.1	4.7	4.4	4.0	3.6	3.3	3.1	2.9	2.7	2.4	2.3
HISPANIC OR LATINO											
# Births (all ages)	33,146	33,075	33,715	34,264	33,874	33,191	32,995	32,575	31,859	32,288	33,584
# Births to teenagers	4,627	4,080	3,813	3,409	3,136	2,974	2,794	2,594	2,413	2,183	2,227
% Births to teenagers	14.0	12.3	11.3	9.9	9.3	9.0	8.5	8.0	7.6	6.8	6.6
BLACK OR AFRICAN AMERICAN											
# Births (all ages)	4,715	4,726	4,522	4,361	4,388	4,595	4,655	4,865	4,766	4,795	4,847
# Births to teenagers	544	507	394	312	316	329	271	280	257	217	257
% Births to teenagers	11.5	8.7	8.7	7.2	7.2	7.2	5.8	5.8	5.4	4.5	5.3
AMERICAN INDIAN OR ALASKA NATIVE											
# Births (all ages)	5,569	5,476	5,145	4,984	5,030	4,866	4,709	4,462	4,087	3,906	4,010
# Births to teenagers	890	775	602	569	540	519	463	410	342	342	294
% Births to teenagers	16.0	14.2	11.7	11.4	10.7	10.7	9.8	9.2	8.4	8.8	7.3
ASIAN OR PACIFIC ISLANDER											
# Births (all ages)	3,625	3,466	3,169	3,235	3,350	3,327	3,271	3,163	2,968	3,017	3,122
# Births to teenagers	79	79	57	63	51	55	42	40	31	22	32
% Births to teenagers	2.2	2.3	1.8	1.9	1.5	1.7	1.3	1.3	1.0	0.7	1.0

Notes: ^a Includes records for ethnic groups other than White Non-Hispanic, Hispanic or Latino, Black or African American, American Indian or Alaska Native, or Asian or Pacific Islander; ^b Urban = Maricopa, Pima, Pinal, and Yuma. The remaining counties comprise Arizona's rural areas.

**TABLE 11
BIRTH RATES BY AGE GROUP FOR FEMALES 19 OR YOUNGER,
ARIZONA, AND UNITED STATES, 2012-2022**

Year	10-14 years		15 - 19 years old					
			Total		15-17 years		18-19 years	
	AZ	U.S.	AZ	U.S.	AZ	U.S.	AZ	U.S.
2012	0.3	0.4	35.4	29.4	18.5	14.1	58.6	51.4
2013	0.3	0.3	31.3	26.5	15.0	12.3	53.6	47.1
2014	0.2	0.3	29.9	24.2	13.4	10.9	54.7	43.8
2015	0.2	0.2	26.3	22.3	11.8	9.9	48.2	40.7
2016	0.2	0.2	23.7	20.3	10.5	8.8	43.7	37.5
2017	0.2	0.2	21.9	18.8	9.3	7.9	41.0	35.1
2018	0.1	0.2	20.1	17.4	8.8	7.2	37.2	32.3
2019	0.2	0.2	18.5	16.7	8.2	6.7	33.2	31.1
2020	0.1	0.2	17.0	15.4	7.4	6.3	30.6	28.8
2021	0.2	0.2	15.3	13.9	6.4	5.6	28.2	26.6
2022	0.1	0.2	15.1	13.6	6.1	5.6	28.0	25.8

Note: The U.S. data is from the National Vital Statistics reports published by the National Center for Health Statistics.

**TABLE 12
REPEAT PREGNANCIES AMONG TEENAGE MOTHERS GIVING BIRTH BY AGE, AND YEAR, ARIZONA, 2012-2022**

Mother's age	Pregnancies	Year										
		2012	2013	2014	2015	2016	2017	2018	2019	2020	2021	2022
15	Total	293	220 [†]	184	193	170 [†]	148	140 [†]	116	110 [†]	100 [†]	85
	Previous pregnancies	283	217	173	193	163	142	137	116	106	99	85
	One or more	8	*	10	0	*	6	*	0	*	*	0
16	Unknown	*	*	*	0	0	0	0	0	0	0	0
	Total	774	609	531	472	426	389	375	322	312	232	250
	Previous pregnancies	732	571	511	441	403	369	355	309	299	222	237
17	One or more	42	38	20	31	22	19	20	13	13	10	13
	Unknown	0	0	0	0	*	*	0	0	0	0	0
	Total	1,363	1,153	1,055	917	827	743	697	691	573	537	518
18	Previous pregnancies	1,218	1,022	938	835	750	676	628	638	532	493	465
	One or more	145	129	116	82	77	67	69	53	41	44	53
	Unknown	0	*	*	0	0	0	0	0	0	0	0
19	Total	2,281	2,012	1,886	1,620	1,537	1,417	1,294	1,140	1,050	969	975
	Previous pregnancies	1,845	1,658	1,545	1,365	1,276	1,179	1,111	1,003	937	843	848
	One or more	434	351	341	255	260	238	183	136	113	126	127
19	Unknown	*	*	0	0	*	0	0	*	0	0	0
	Total	3,339	3,154	2,921	2,641	2,379	2,308	2,124	2,018	1,861	1,699	1,714
	Previous pregnancies	2,444	2,376	2,233	2,017	1,873	1,817	1,674	1,640	1,506	1,355	1,423
19	One or more	892	777	687	622	506	490	450	378	354	344	291
	Unknown	*	*	*	*	0	*	0	0	*	0	0

Notes: * Cell suppressed due to non-zero count less than 6; † Sum rounded to nearest tens unit due to non-zero addend less than 6.

**TABLE 13
CUMULATIVE NUMBER OF MOTHERS WHO WERE 19 OR YOUNGER IN ARIZONA IN 2022**

Year Baby Was Born	MOTHER'S AGE WHEN BABY WAS BORN										Mother was 19 or younger in 2022	
	10	11	12	13	14	15	16	17	18	19		
2013	0											0†
2014	0	0										0
2015	0	0	0									0†
2016	0	0	*	9								10†
2017	0	0	0	6	30							36
2018	0	0	0	*	24	140						170†
2019	0	*	*	*	29	116	322					470†
2020	0	0	0	6	22	110	312	573				1,023
2021	0	0	0	9	34	100	232	537	969			1,881
2022	0	0	0	7	26	85	250	519	975	1714		3,576
Cumulative number of mothers 19 or younger	0	0†	0†	50†	165	551	1,116	1,629	1,944	1,714		7,170†

Notes: * Cell suppressed due to non-zero count less than 6; † Sum rounded to nearest tens unit due to non-zero addend less than 6; The above table focuses on the 2022 cohort of Arizona mothers who were 19 or younger that year. Among them are those who gave birth in 2022 and those who gave birth prior to 2022 and were still 19 or less years old in 2022. The numbers below the main diagonal (and below the stair-like line) represent the number of mothers meeting either one of the above criteria. The last column to the right gives the cumulative total for 2022 by the year the baby was born. The bottom row gives the cumulative total by mother's age when the baby was born. For example, among the 7,170† mothers under 20 in Arizona, in 2022, around 50† had given birth when 13 years old. Excluded from the cumulative totals and not shown above the main diagonal (and above stair-like line) are the number of mothers who were 19 years old or younger when the baby was born, but who were no longer under the age 20 by 2022. For example, mothers who were 11 years old in 2013 were 20 years old in 2022. The figures in Table 13 are unadjusted for in-and-out migration, as well as mortality of mothers, in the period of 2013-2022. For simplicity, the number of mothers equals the number of babies (i.e., no adjustment was made for multiple birth events).

**TABLE 14
TRENDS IN TEEN PREGNANCY RATES BY RACE/ETHNICITY AND AGE GROUP,
ARIZONA, 2012-2022**

	Total, females 19 years or younger	10-14 years	15-19 years	15-17 years	18-19 years
WHITE NON-HISPANIC					
2012	10.7	0.1	20.6	9.0	35.6
2013	9.8	0.1	18.9	7.1	34.0
2014	11.6	0.2	23.0	8.2	45.5
2015	10.5	**	20.6	7.7	40.2
2016	9.5	0.2	18.5	6.5	36.4
2017	8.2	**	15.8	5.4	31.5
2018	7.7	**	15.1	5.3	29.7
2019	6.9	**	13.6	5.0	25.7
2020	6.6	**	12.9	4.4	24.7
2021	6.0	0.2	11.7	3.8	22.8
2022	5.4	**	10.6	3.5	20.7
HISPANIC OR LATINO					
2012	28.0	0.6	56.7	31.6	93.8
2013	25.0	0.6	50.7	25.9	87.4
2014	25.4	0.3	51.9	25.2	91.7
2015	20.4	0.4	41.4	19.5	74.7
2016	19.3	0.4	38.7	17.6	71.5
2017	17.8	0.4	35.7	15.8	66.5
2018	16.5	0.3	33.3	15.4	60.8
2019	15.6	0.3	31.4	14.2	56.7
2020	15.0	0.3	30.0	12.9	54.6
2021	14.4	0.3	28.6	11.7	53.6
2022	13.9	0.3	27.7	11.8	51.1
BLACK OR AFRICAN AMERICAN					
2012	26.2	**	49.8	26.2	81.2
2013	25.1	0.7	47.5	20.9	82.9
2014	16.9	**	33.3	15.9	59.4
2015	16.6	**	32.6	14.2	59.8
2016	17.3	**	34.0	14.0	63.5
2017	17.8	**	34.9	14.0	64.9
2018	14.3	**	28.3	11.6	52.9
2019	15.1	**	30.2	12.3	55.8
2020	14.1	**	28.4	11.2	52.5
2021	12.6	**	25.1	8.1	49.3
2022	12.5	**	25.2	10.3	46.4
AMERICAN INDIAN OR ALASKA NATIVE					
2012	33.6	0.5	65.5	32.2	110.7
2013	29.7	0.6	58.6	31.5	98.0
2014	19.2	0.7	37.8	21.0	62.7
2015	26.8	0.9	52.5	27.3	90.8
2016	24.7	1.1	47.9	24.8	83.9
2017	22.8	0.7	45.2	23.3	78.9
2018	20.6	0.6	41.5	19.8	74.1
2019	18.8	0.6	38.5	20.0	64.9
2020	16.8	**	34.5	18.5	57.6
2021	16.3	0.7	32.9	18.1	56.1
2022	13.8	0.6	27.9	10.8	54.7
ASIAN OR PACIFIC ISLANDER					
2012	7.5	**	14.6	5.6	26.6
2013	6.8	**	13.2	3.7	25.5
2014	5.5	**	10.9	4.6	20.3
2015	6.3	0.0	12.8	4.8	23.8
2016	5.0	0.0	10.0	3.4	19.0
2017	5.8	**	11.3	2.0	24.2
2018	4.6	0.0	8.8	2.3	17.8
2019	4.3	0.0	8.4	2.2	16.8
2020	3.2	0.0	6.4	2.8	11.3
2021	3.4	**	6.4	**	11.9
2022	3.0	0.0	5.8	2.2	10.9

Note: ** Cell suppressed due to rate/ratio/percent based on non-zero count less than 6.

**TABLE 15
TRENDS IN SEXUALLY TRANSMITTED INFECTIONS BY AGE GROUP AND YEAR AMONG FEMALES 10-19 YEARS,
ARIZONA, 2012-2022**

	2012	2013	2014	2015	2016	2017	2018	2019	2020	2021	2022
Diagnosed with:	10-14 years										
Gonorrhea	21	21	16	30	38	39	32	24	42	36	39
Chlamydia	197	135	143	131	166	155	164	144	156	116	165
Early syphilis	0	0	0	0	0	*	0	0	0	*	*
Total reported infections	218	156	159	161	204	200 [†]	196	168	198	150 [†]	210 [†]
Diagnosed with:	15-19 years										
Gonorrhea	813	702	679	751	856	1,024	937	1,040	1,202	1,282	1,975
Chlamydia	6,882	6,213	5,876	5,952	6,385	7,016	7,050	7,242	6,170	6,386	7,877
Early syphilis	6	6	9	8	7	23	39	42	44	53	126
Total reported infections	7,701	6,921	6,564	6,711	7,248	8,063	8,026	8,324	7,416	7,721	9,978

Notes: * Cell suppressed due to non-zero count less than 6; [†] Sum rounded to nearest tens unit due to non-zero addend less than 6; Information about the number of reported cases of gonorrhea, chlamydia, and early syphilis was provided by STD Program in the Office of Infectious Diseases (see Table 3B-3 in the Arizona Health Status and Vital Statistics annual reports).

**TABLE 16
TRENDS IN THE INCIDENCE RATES^a OF SEXUALLY TRANSMITTED INFECTIONS BY AGE GROUP AND YEAR AMONG
FEMALES 10-19 YEARS, ARIZONA, 2012-2022**

	2012	2013	2014	2015	2016	2017	2018	2019	2020	2021	2022
Diagnosed with:	10-14 years										
Gonorrhea	9.4	9.4	7.1	13.3	16.9	17.3	13.9	10.3	18.2	15.6	16.7
Chlamydia	88.5	60.4	63.7	58.3	73.9	68.8	71.2	61.5	67.6	50.4	70.5
Early syphilis	0.0	0.0	0.0	0.0	0.0	**	0.0	0.0	0.0	**	**
Total reported infections	97.9	69.8	70.8	71.6	90.8	86.5	85.1	71.8	85.9	66.9	87.6
Diagnosed with:	15-19 years										
Gonorrhea	374.7	321.0	306.9	334.1	380.8	450.3	406.8	447.9	521.8	554.0	839.4
Chlamydia	3,171.8	2,840.6	2,656.2	2,647.8	2,840.4	3,085.0	3,060.8	3,118.8	2,678.6	2,759.8	3,347.8
Early syphilis	2.8	2.7	4.1	3.6	7.6	10.1	16.9	18.1	19.1	22.9	53.6
Total reported infections	3,549.3	3,164.3	2,967.2	2,985.5	3,228.8	3,545.4	3,484.5	3,584.8	3,219.5	3,336.7	4,240.8

Notes: ** Cell suppressed due to rate/ratio/percent based on non-zero count less than 6; ^a Number of cases per 100,000 females in specified age group.

TABLE 17
PREGNANCIES AND PREGNANCY RATES OF FEMALES 19 OR YOUNGER
BY COUNTY OF RESIDENCE, ARIZONA, 2022

County of residence	NUMBER OF PREGNANCIES ^a				
	Total, females 19 years or younger	10-14 years	15-19 years old		
			Total, 15-19 years	15-17 years	18-19 years
Apache	56	0	56	10	46
Cochise	90†	*	87	26	61
Coconino	60†	*	62	12	50
Gila	40†	*	33	8	25
Graham	37	0	37	10	27
Greenlee	0†	0	0†	*	*
La Paz	13	0	10†	*	8
Maricopa	2,862	24	2,838	660	2,178
Mohave	113	0	113	21	92
Navajo	90†	*	89	19	70
Pima	600†	*	597	139	458
Pinal	310†	*	311	78	233
Santa Cruz	59	0	59	21	38
Yavapai	100†	*	103	22	81
Yuma	200†	*	194	57	137
TOTAL STATE	4,702	50†	4,657	1,100†	3,560†

County of residence	PREGNANCY RATES ^b				
	Total, females 19 years or younger	10-14 years	15-19 years old		
			Total 15-19 years	15-17 years	18-19 years
Apache	10.7	0.0	22.0	6.2	49.0
Cochise	11.9	**	24.0	11.9	42.2
Coconino	5.3	**	8.0	4.8	9.6
Gila	12.8	**	25.8	9.8	54.3
Graham	13.0	0.0	26.7	11.6	51.8
Greenlee	6.2	0.0	14.2	**	**
La Paz	19.3	0.0	40.8	**	66.7
Maricopa	9.6	0.2	19.1	7.3	37.3
Mohave	11.3	0.0	23.7	6.8	54.2
Navajo	12.2	**	25.0	8.1	57.4
Pima	9.2	**	17.4	7.6	28.4
Pinal	11.4	**	24.2	9.4	51.8
Santa Cruz	16.0	0.0	32.1	18.1	55.9
Yavapai	9.5	**	19.2	6.6	40.0
Yuma	14.5	**	27.9	13.5	50.4
TOTAL STATE	10.0	0.2	19.8	7.9	37.0

Notes: * Cell suppressed due to non-zero count less than 6; ** Cell suppressed due to rate/ratio/percent based on non-zero count less than 6; † Sum rounded to nearest tens unit due to non-zero addend less than 6; ^a The sum of live births, fetal deaths and abortions; ^b The number of pregnancies per 1,000 females in specified group.

TABLE 18
BIRTHS AND BIRTH RATES, FEMALES 19 OR YOUNGER BY COUNTY OF RESIDENCE,
ARIZONA, 2022

County of residence	NUMBER OF BIRTHS				
	Total, females 19 years or younger	10-14 years	15-19 years old		
			Total 15-19 years	15-17 years	18-19 years
Apache	53	0	53	10	43
Cochise	80†	*	79	22	57
Coconino	60†	*	55	11	44
Gila	30†	*	30†	*	20
Graham	36	0	36	10	26
Greenlee	0†	0	0†	*	0
La Paz	11	0	10†	*	7
Maricopa	2,067	16	2,051	487	1,564
Mohave	112	0	112	21	91
Navajo	90†	*	85	18	67
Pima	450†	*	444	108	336
Pinal	250†	*	253	62	191
Santa Cruz	54	0	54	19	35
Yavapai	90	0	90	19	71
Yuma	200†	*	192	56	136
TOTAL STATE	3,580†	30†	3,540†	850†	2,689

County of residence	BIRTH RATES ^a				
	Total, females 19 years or younger	10-14 years	15-19 years old		
			Total 15-19 years	15-17 years	18-19 years
Apache	10.1	0.0	20.9	6.2	45.8
Cochise	10.8	**	21.8	10.1	39.4
Coconino	4.7	**	7.1	4.4	8.4
Gila	9.9	**	19.5	**	43.5
Graham	12.7	0.0	26.0	11.6	49.9
Greenlee	3.1	0.0	7.1	**	0.0
La Paz	16.3	0.0	34.5	**	58.3
Maricopa	6.9	0.1	13.8	5.4	26.8
Mohave	11.2	0.0	23.5	6.8	53.7
Navajo	11.7	**	23.8	7.7	55.0
Pima	6.9	**	12.9	5.9	20.8
Pinal	9.3	**	19.7	7.4	42.5
Santa Cruz	14.6	0.0	29.4	16.4	51.5
Yavapai	8.2	0.0	16.8	5.7	35.1
Yuma	14.3	**	27.7	13.3	50.1
TOTAL STATE	7.6	0.1	15.1	6.1	28.0

Notes: * Cell suppressed due to non-zero count less than 6; ** Cell suppressed due to rate/ratio/percent based on non-zero count less than 6; † Sum rounded to nearest tens unit due to non-zero addend less than 6; ^a The number of births per 1,000 females in specified group.

**TABLE 19
PREGNANCY RATES^a AND NUMBER OF LIVE BIRTHS, FETAL DEATHS, AND
ABORTIONS TO TEENS BY INDIVIDUAL AGE, ARIZONA, 2022**

Age	Population	PREGNANCIES BY OUTCOME			TOTAL PREGNANCIES	
		Live births	Induced terminations of pregnancy (or abortions)	Spontaneous fetal losses	Number	Rate
10	44,974	0	0	0	0	0.0
11	45,841	0	0	0	0	0.0
12	47,893	0	*	0	*	**
13	47,993	7	*	0	11	0.2
14	47,292	26	7	0	33	0.7
10-14	233,993	33	10 [†]	0	50 [†]	0.2
15	46,973	85	39	*	126	2.7
16	46,746	250	70	*	323	6.9
17	45,378	519	129	*	652	14.4
15-17	139,097	854	238	10 [†]	1,101	7.9
18	47,565	975	364	10	1,349	28.4
19	48,625	1,714	478	15	2,207	45.4
18-19	96,190	2,689	842	25	3,556	37.0
Total 10-19	469,280	3,576	1,092	34	4,702	10.0

Notes: * Cell suppressed due to non-zero count less than 6; ** Cell suppressed due to rate/ratio/percent based on non-zero count less than 6; [†] Sum rounded to nearest tens unit due to non-zero addend less than 6; ^a Rates per 1,000 female population in specific group.

**TABLE 20
BIRTHS TO FEMALES 19 OR YOUNGER BY AGE AND COUNTY OF RESIDENCE,
ARIZONA, 2022**

	Total	Mother's age								
		11	12	13	14	15	16	17	18	19
TOTAL	3,580†	0	0	10†	30†	90†	250†	520†	980†	1,710†
Apache	50†	0	0	0	0	*	*	*	12	31
Cochise	80†	0	0	0	*	*	*	13	29	28
Coconino	60†	0	0	0	*	0	*	10	19	25
Gila	30†	0	0	0	*	*	0	*	*	15
Graham	40†	0	0	0	0	0	*	6	12	14
Geenlee	0†	0	0	0	0	0	*	*	0	0
La Paz	10†	0	0	0	0	0	*	*	*	*
Maricopa	2,070†	0	0	*	12	53	146	288	564	1,000
Mohave	112	0	0	0	0	0	7	14	30	61
Navajo	90†	0	0	*	*	*	8	9	18	49
Pima	450†	0	0	*	*	12	25	71	128	208
Pinal	250†	0	0	0	*	*	18	40	63	128
Santa Cruz	50†	0	0	0	0	*	8	10	15	20
Yavapai	90†	0	0	0	0	*	8	9	22	49
Yuma	200†	0	0	0	*	6	13	37	54	82

Notes: * Cell suppressed due to non-zero count less than 6; † Sum rounded to nearest tens unit due to non-zero addend less than 6.

**TABLE 21
ABORTIONS TO FEMALES 19 OR YOUNGER BY AGE AND COUNTY OF RESIDENCE,
ARIZONA, 2022**

	Total	10	11	12	13	14	15	16	17	18	19
TOTAL	1,090†	0	0	0†	0†	10†	40†	70†	130†	360†	480†
Apache	0†	0	0	0	0	0	0	0	0	*	*
Cochise	10†	0	0	0	0	0	*	0	*	0	*
Coconino	10†	0	0	0	0	0	0	0	*	*	*
Gila	0†	0	0	0	0	0	*	0	*	0	*
Graham	0†	0	0	0	0	0	0	0	0	*	0
Greenlee	0†	0	0	0	0	0	0	0	0	*	*
La Paz	0†	0	0	0	0	0	0	*	0	0	*
Maricopa	770†	0	0	0	*	*	25	51	91	256	343
Mohave	0	0	0	0	0	0	0	0	0	0	0
Navajo	0†	0	0	0	0	0	0	*	0	*	*
Pima	150†	0	0	0	0	*	6	9	15	47	70
Pinal	60†	0	0	0	0	*	*	*	10	20	22
Santa Cruz	10†	0	0	0	0	0	0	*	*	*	*
Yavapai	10†	0	0	*	0	0	*	0	*	*	7
Yuma	0†	0	0	0	0	0	0	*	0	*	0
Unknown	60†	0	0	0	0	*	*	*	7	28	21

Notes: * Cell suppressed due to non-zero count less than 6; † Sum rounded to nearest tens unit due to non-zero addend less than 6.

**TABLE 22
SOURCES OF PAYMENT FOR LABOR AND DELIVERY, FEMALES 19 OR YOUNGER
BY AGE AND COUNTY OF RESIDENCE, ARIZONA, 2022**

	Total	AHCCCS	IHS	Private insurance	Self-pay	Unknown
TOTAL	3,580 [†]	2,860 [†]	60 [†]	410 [†]	150 [†]	90 [†]
Apache	50 [†]	44	0	*	*	*
Cochise	80 [†]	67	0	*	7	*
Coconino	60 [†]	44	0	10	*	0
Gila	27	11	9	7	0	0
Graham	40 [†]	24	*	*	7	0
Greenlee	0 [†]	*	0	0	0	0
La Paz	10 [†]	10	0	*	0	0
Maricopa	2,067	1,686	16	240	54	71
Mohave	112	95	0	7	9	*
Navajo	90 [†]	79	0	10	*	0
Pima	446	359	15	42	22	8
Pinal	250 [†]	175	16	55	*	*
Santa Cruz	50 [†]	45	0	*	7	0
Yavapai	90 [†]	67	*	14	7	*
Yuma	200 [†]	151	*	13	30	*

Notes: * Cell suppressed due to non-zero count less than 6; [†] Sum rounded to nearest tens unit due to non-zero addend less than 6.

**TABLE 23
SOURCES OF PAYMENT FOR LABOR AND DELIVERY, FEMALES 19 OR YOUNGER
BY AGE GROUP, ARIZONA, 2022**

		Total	Mother's age group			
			<15	15-17	18-19	
Total	Count	3,580 [†]	30 [†]	854	2,689	
Payer for births	AHCCCS	Count	2,860	23	665	2,172
		Percent	80.0	69.7	77.9	80.8
	IHS	Count	60 [†]	*	18	39
		Percent	1.7	**	2.1	1.5
	Private insurance	Count	410 [†]	*	95	314
		Percent	11.5	**	11.1	11.7
	Self-pay	Count	150 [†]	*	51	100
		Percent	4.3	**	6.0	3.7
	Unknown	Count	90 [†]	*	25	64
		Percent	2.5	**	2.9	2.4

Notes: * Cell suppressed due to non-zero count less than 6; ** Cell suppressed due to rate/ratio/percent based on non-zero count less than 6; [†] Sum rounded to nearest tens unit due to non-zero addend less than 6.

**TABLE 24
TEENAGE BIRTHS BY NUMBER OF PREVIOUS PREGNANCIES BY AGE GROUP,
ARIZONA, 2022**

		Total	Mother's age group			
			<15	15-17	18-19	
Total	Count	3,580†	30†	854	2,690†	
Total prior pregnancies	None	Count	3,088	30	787	2,271
		Percent	86.4	90.9	92.3	84.5
	1	Count	450†	*	66	382
		Percent	12.6	**	7.7	14.2
	2	Count	31	0	0	31
		Percent	0.9	0.0	0.0	1.2
	3	Count	0†	0	0	*
		Percent	**	0.0	0.0	**
	4 or more	Count	0†	0	0	*
		Percent	**	0.0	0.0	**
	Unknown	Count	0	0	0	0
		Percent	0.0	0.0	0.0	0.0

**TABLE 25
TEENAGE BIRTHS BY MARITAL STATUS AND AGE GROUP,
ARIZONA, 2022**

		Total	Mother's age group			
			<15	15-17	18-19	
Total	Count	3,576	33	854	2,689	
Marital status	Married	Count	252	0	8	244
		Percent	7.0	0.0	0.9	9.1
	Unmarried	Count	3,314	33	846	2,435
		Percent	92.7	100.0	99.1	90.6
	Other	Count	10	0	0	10
		Percent	0.3	0.0	0.0	0.4

**TABLE 26
TEENAGE BIRTHS BY MOTHER'S EDUCATION AND AGE GROUP
ARIZONA, 2022**

		Total	Mother's age group			
			<15	15-17	18-19	
Total	Count	3,580†	33	850†	2,690†	
Mother's education	8th Grade or Less	Count	195	19	76	100
		Percent	5.5	57.6	8.9	3.7
	Some High School	Count	1,815	13	681	1,121
		Percent	50.8	39.4	79.7	41.7
	High School / GED	Count	1,320	0	88	1,232
		Percent	36.9	0.0	10.3	45.8
	Some College	Count	210†	0	*	200
		Percent	5.7	0.0	**	7.4
	Associate Degree	Count	22	0	0	22
		Percent	0.6	0.0	0.0	0.8
	Bachelor's Degree	Count	0†	0	0	*
		Percent	**	0.0	0.0	**
	Postgraduate Education	Count	0	0	0	0
		Percent	0.0	0.0	0.0	0.0
	Unknown	Count	20†	*	*	13
		Percent	0.5	**	**	0.5

Notes: * Cell suppressed due to non-zero count less than 6; ** Cell suppressed due to rate/ratio/percent based on non-zero count less than 6; † Sum rounded to nearest tens unit due to non-zero addend less than 6.

**TABLE 27
TEENAGE BIRTHS BY TRIMESTER OF ENTRY INTO PRENATAL CARE
AND AGE GROUP, ARIZONA, 2022**

		Total	Mother's age group			
			<15	15-17	18-19	
Total	Count	3,576	33	854	2,689	
Prenatal care	No care	Count	168	6	59	103
		Percent	4.7	18.2	6.9	3.8
	1st trimester	Count	1,898	9	387	1,502
		Percent	53.1	27.3	45.3	55.9
	2nd trimester	Count	920	9	242	669
		Percent	25.7	27.3	28.3	24.9
	3rd trimester	Count	440	8	130	302
		Percent	12.3	24.2	15.2	11.2
	Unknown	Count	150†	*	36	113
		Percent	4.2	**	4.2	4.2

**TABLE 28
TEENAGE BIRTHS BY NUMBER OF PRENATAL VISITS AND AGE GROUP,
ARIZONA, 2022**

		Total	Mother's age group			
			<15	15-17	18-19	
Total	Count	3,576	30†	854	2,689	
Prenatal visits	No visits	Count	168	6	59	103
		Percent	4.7	18.2	6.9	3.8
	1-4 visits	Count	335	7	105	223
		Percent	9.4	21.2	12.3	8.3
	5-8 visits	Count	870†	*	209	656
		Percent	24.3	**	24.5	24.4
	9-12 visits	Count	1,342	10	309	1,023
		Percent	37.5	30.3	36.2	38.0
	13+ visits	Count	790†	*	155	631
		Percent	22.1	**	18.1	23.5
	Unknown	Count	70	0	17	53
		Percent	2.0	0.0	2.0	2.0

Notes: * Cell suppressed due to non-zero count less than 6; ** Cell suppressed due to rate/ratio/percent based on non-zero count less than 6; † Sum rounded to nearest tens unit due to non-zero addend less than 6.

**TABLE 29
TOBACCO USE DURING PREGNANCY AMONG FEMALES 19 OR YOUNGER BY
AGE GROUP, ARIZONA, 2022**

		Total	Mother's age group			
			<15	15-17	18-19	
Total	Count	3,576	30 [†]	850 [†]	2,689	
Substance use	Nonsmoker	Count	3,475	31	833	2,611
		Percent	97.2	93.9	97.5	97.1
	Light smoker	Count	44	0	11	33
		Percent	1.2	0.0	1.3	1.2
	Heavy smoker	Count	10 [†]	0	*	8
		Percent	0.3	0.0	**	0.3
	Unknown	Count	50 [†]	*	8	37
		Percent	1.3	**	0.9	1.4

Notes: * Cell suppressed due to non-zero count less than 6; ** Cell suppressed due to rate/ratio/percent based on non-zero count less than 6; [†] Sum rounded to nearest tens unit due to non-zero addend less than 6.

**TABLE 30
RISK FOR LOW-BIRTHWEIGHT (LBW) BIRTHS BY SELECTED CHARACTERISTICS OF FEMALES 19 OR YOUNGER,
ARIZONA, 2022**

	Mother's age group									
	<15			15-17			18-19			
	Total births	LBW births Count	LBW births Percent	Total births	LBW births Count	LBW births Percent	Total births	LBW births Count	LBW births Percent	
Race/ethnicity										
White non-Hispanic	*	0	0.0	148	17	11.5	617	69	11.2	
Hispanic or Latino	21	*	**	570	58	10.2	1,636	118	7.2	
Black or African American	*	0	0.0	60	19	31.7	193	23	11.9	
American Indian or Alaska Native	7	0	0.0	69	*	**	218	20	9.2	
Asian	0	0	0.0	7	*	**	25	*	**	
Smoking during pregnancy										
Nonsmoker	31	*	**	833	94	11.3	2,611	215	8.2	
Light smoker	0	0	0.0	11	*	**	33	*	**	
Heavy smoker	0	0	0.0	*	0	0.0	8	*	**	
Unknown	*	*	**	8	*	**	37	11	29.7	
Payer for births										
AHCCCS	23	*	**	665	78	11.7	2,172	195	9.0	
IHS	*	0	0.0	18	0	0.0	39	*	**	
Private insurance	*	0	0.0	95	13	13.7	314	25	8.0	
Self-pay	*	0	0.0	51	*	**	100	8	8.0	
Unknown	*	0	0.0	25	*	**	64	*	**	
Length of gestation										
36 weeks or less	*	*	**	84	56	66.7	242	137	56.6	
37 weeks or more	29	*	**	767	41	5.4	2,445	94	3.9	
Unknown	0	0	0.0	*	0	0.0	*	0	0.0	
Prenatal visits										
Less than 5	13	*	**	164	27	16.5	326	54	16.6	
5 or more	20	*	**	673	68	10.1	2,310	173	7.5	
Unknown	0	0	0.0	17	*	**	53	*	**	

Notes: * Cell suppressed due to non-zero count less than 6, ** Cell suppressed due to rate/ratio/percent based on non-zero count less than 6.

**TABLE 31
POPULATION OF FEMALES 19 OR YOUNGER, NUMBER OF PREGNANCIES AND PREGNANCY RATES BY AGE GROUP, AND RACE/ETHNICITY, ARIZONA, 2022**

	POPULATION				
	All 19 years or younger	10-14 years	15-19 years	15-17 years	18-19 years
All groups	469,280	233,993	235,287	139,097	96,190
White non-Hispanic	192,700	94,517	98,183	57,463	40,720
Hispanic or Latino	207,090	104,117	102,973	61,399	41,574
Black or African American	28,468	14,504	13,964	8,185	5,779
American Indian or Alaska Native	23,549	12,162	11,387	6,943	4,444
Asian or Pacific Islander	17,473	8,693	8,780	5,107	3,673

Note: Population denominator tables can be found:
<http://pub.azdhs.gov/health-stats>

	NUMBER OF PREGNANCIES				
	All 19 years or younger	10-14 years	15-19 years	15-17 years	18-19 years
All groups	4,702	50 [†]	4,657	1,101	3,556
White non-Hispanic	1,050 [†]	*	1,044	202	842
Hispanic or Latino	2,876	27	2,849	723	2,126
Black or African American	360 [†]	*	352	84	268
American Indian or Alaska Native	325	7	318	75	243
Asian or Pacific Islander	50 [†]	*	51	11	40

	PREGNANCY RATES PER 1,000 FEMALES				
	All 19 years or younger	10-14 years	15-19 years	15-17 years	18-19 years
All groups	10.0	0.2	19.8	7.9	37.0
White non-Hispanic	5.4	**	10.6	3.5	20.7
Hispanic or Latino	13.9	0.3	27.7	11.8	51.1
Black or African American	12.5	**	25.2	10.3	46.4
American Indian or Alaska Native	13.8	0.6	27.9	10.8	54.7
Asian or Pacific Islander	3.0	**	5.8	2.2	10.9

Notes: * Cell suppressed due to non-zero count less than 6; ** Cell suppressed due to rate/ratio/percent based on non-zero count less than 6; [†] Sum rounded to nearest tens unit due to addend less than 6.

**TABLE 32
POPULATION OF FEMALES 19 OR YOUNGER BY COUNTY OF RESIDENCE, ARIZONA, 2022**

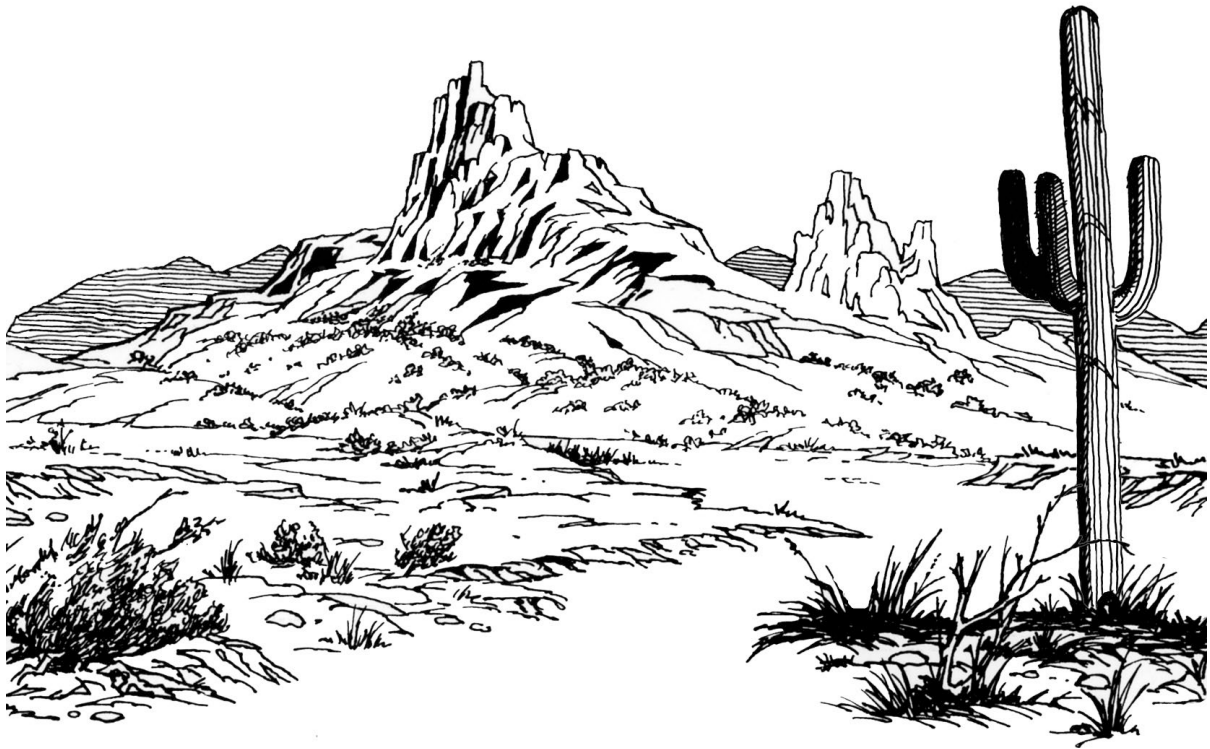
	All 19 years or younger	10-14 years	15-19 years		
			15-19 years	15-17 years	18-19 years
ARIZONA	469,280	233,993	235,287	139,097	96,190
Apache	5,238	2,698	2,540	1,601	939
Cochise	7,391	3,766	3,625	2,179	1,446
Coconino	11,939	4,228	7,711	2,476	5,235
Gila	2,730	1,451	1,279	819	460
Graham	2,842	1,456	1,386	865	521
Greenlee	644	362	282	183	99
La Paz	674	355	319	199	120
Maricopa	299,448	150,967	148,481	90,086	58,395
Mohave	10,011	5,240	4,771	3,075	1,696
Navajo	7,723	4,158	3,565	2,346	1,219
Pima	64,868	30,504	34,364	18,221	16,143
Pinal	27,386	14,560	12,826	8,329	4,497
Santa Cruz	3,695	1,857	1,838	1,158	680
Yavapai	10,955	5,598	5,357	3,334	2,023
Yuma	13,736	6,793	6,943	4,226	2,717

Note: Population denominator tables can be found: <http://pub.azdhs.gov/health-stats>

**APPENDIX
HOW TO COMPUTE THE RATES OF FIRST AND REPEAT CHILDBEARING**

	2012	2013	2014	2015	2016	2017	2018	2019	2020	2021	2022	Comments
A. The number of females 15-19 years old	227,395	228,652	220,134	222,162	225,110	228,583	230,329	232,201	230,343	231,390	235,287	Genus enumerations for 2020; population estimates for 2012-2022.
B. The number of births to females 15-19 years old	8,050	7,151	6,577	5,843	5,336	5,005	4,630	4,287	3,906	3,537	3,543	Based on the birth database.
C. The rate of births (B/A) *1,000	35.4	31.3	29.9	26.3	23.7	21.9	20.1	18.5	17.0	15.3	15.1	The number of births per 1,000 females 15-19 years old.
D. Cumulative number of mothers who gave birth when 15-19 years old	17,929	16,031	14,384	12,800	11,433	10,482	9,596	8,859	8,091	7,374	6,954	Mothers who gave birth when 15-19 years old. As an example, the 2022 cohort of mothers who were 15-19 years old includes 3,543 (B.) who gave birth that year and 5,288 who gave birth prior to 2022 and were still 15-19 years old in 2022 (Table 13).
E. The number of females 15-19 years old who had a birth previously (D-B)	9,879	8,880	7,807	6,957	6,097	5,477	4,966	4,572	4,185	3,837	3,411	The cumulative number of mothers 15-19 years old (Table 13) minus those who gave birth that year.
F. The number of repeat births to females 15-19 years old who had a birth previously	1,521	1,300	1,161	990	861	811	716	578	517	521	481	Table 1B-23 in "Arizona Health Status and Vital Statistics" annual report.
G. The rate of repeat childbearing (F/E)*1,000	154.0	146.4	148.7	142.3	141.2	148.1	144.2	126.4	123.5	135.8	141.0	The number of repeat births per 1,000 females 15-19 years old who had a birth previously.
H. The number of females 15-19 years old who did not have a birth previously (A-E)	217,516	219,772	212,327	215,205	219,013	223,106	225,363	227,629	226,158	227,553	231,876	All 15-19 years old - those who gave birth previously.
I. The number of first-time births to females 15-19 years old who did not have a birth previously	6,522	5,844	5,414	4,851	4,474	4,193	3,914	3,708	3,388	3,016	3,061	Table 1B-23 in "Arizona Health Status and Vital Statistics" annual report.
J. The rate of first-time births (I/H) *1,000	30.0	26.6	25.5	22.5	20.4	18.8	17.4	16.3	15.0	13.3	13.2	The number of first-time births per 1,000 females 15-19 years old who did not have a birth previously.

Our Web site at <http://pub.azdhs.gov/health-stats> provides access to a wide range of statistical information about the health status of Arizonans. The Arizona Health Status and Vital Statistics annual report examines trends in natality, mortality, and morbidity towards established health objectives. Additional reports and studies include Advance Vital Statistics by County of Residence, Injury Mortality among Arizona Residents (all injury, accidents, suicides, homicides, legal intervention, undetermined, firearm-related fatalities, drug-related deaths, drowning deaths, falls among Arizonans 65 years or older), Hospital Inpatient and Emergency Room Statistics (first-listed diagnosis, procedures, alcohol abuse, asthma, diabetes, substance abuse, falls, influenza and pneumonia, injury, and mental disorders), Abortions in Arizona, Community Vital Statistics, Teenage Pregnancy, Differences in Health Status Among Racial/Ethnic Groups, Health Status Profile of American Indians in Arizona, Mortality from Alzheimer's Disease, Heart Disease vs. Cancer: An Epidemiologic Transition in Mortality Risks, and Deaths from Exposure to Excessive Natural Heat Occurring in Arizona.



ARIZONA DEPARTMENT OF HEALTH SERVICES
Business Intelligence Office
Vital Statistics Program