

TEENAGE PREGNANCY

Arizona, 1993-2003



Public Health Services

**Bureau of Public Health Statistics
Health Status and Vital Statistics Section**

~ Leadership for a Healthy Arizona ~



Janet Napolitano, Governor
State of Arizona

Catherine R. Eden, Director
Arizona Department of Health Services

Health Status and Vital Statistics Section
BUREAU OF PUBLIC HEALTH STATISTICS
ARIZONA DEPARTMENT OF HEALTH SERVICES

150 North 18th Avenue, Suite 550

Phoenix, Arizona 85007

Phone: 602/542-7333; FAX: 602/542-2940

www.azdhs.gov/plan

This publication can be made available in alternative format.
Please contact the Bureau of Public Health Statistics
at 602/542-7333 (voice) or call 1-800-367-8939 (TDD).

The Arizona Department of Health Services is
an Equal Employment Opportunity Agency.

Permission to quote from or reproduce materials from this
publication is granted when due acknowledgment is made.

TEENAGE PREGNANCY, ARIZONA, 1993-2003

by

Christopher K. Mrela, Ph.D., *Assistant Registrar of Vital Statistics*
Clare Torres, *Senior Health Data Analyst*

October 2003

TEENAGE PREGNANCY, ARIZONA, 1993-2003

Table of Contents

PURPOSE	1
METHODS AND SOURCES	1
DATA ORGANIZATION	1
KEY FINDINGS	1
DATA TABLES	7

List of Figures

Figure 1	2
PREGNANCY RATES BY AGE GROUP AND YEAR AMONG FEMALES 19 AND YOUNGER, ARIZONA, 1993-2003	
Figure 2	2
TRENDS IN THE NUMBER OF PREGNANCIES AND PREGNANCY RATES AMONG FEMALES 19 YEARS AND YOUNGER, ARIZONA, 1993-2003	
Figure 3	3
TRENDS IN THE NUMBER OF PREGNANCIES BY RACE/ETHNICITY AMONG FEMALES 19 YEARS AND YOUNGER, ARIZONA, 1993-2003	
Figure 4	3
TRENDS IN THE NUMBER OF LIVE BIRTHS BY RACE/ETHNICITY AMONG FEMALES 19 YEARS AND YOUNGER, ARIZONA, 1993-2003	
Figure 5	4
TRENDS IN THE NUMBER OF INDUCED ABORTIONS BY RACE/ETHNICITY AMONG FEMALES 19 YEARS AND YOUNGER, ARIZONA, 1993-2003	
Figure 6	4
PROPORTIONAL CONTRIBUTION OF NON-SURGICAL AND SURGICAL ABORTIONS BY RACE/ETHNICITY AMONG FEMALES 19 YEARS AND YOUNGER, ARIZONA, 2003	
Figure 7	5
RATES OF FIRST AND REPEAT BIRTHS TO FEMALES AGED 15-19 YEARS, ARIZONA, 2000-2003	
Figure 8	5
COMPARISON OF PREGNANCY RATES BY ETHNIC GROUP AMONG FEMALES AGED 19 YEARS AND YOUNGER IN ARIZONA, 1993-2003	
Figure 9	6
BIRTHS TO MOTHERS 15-19 YEARS OLD BY MARITAL STATUS, ARIZONA, 1983, 1993 AND 2003	
Figure 10	6
NUMBER OF BIRTHS TO MOTHERS 19 YEARS OR YOUNGER BY PAYEE, ARIZONA, 1990, 1993, 2000, 2003	

List of Tables

<u>Table 1</u>	8
PREGNANCIES AND PREGNANCY OUTCOMES BY AGE GROUP AND YEAR, FEMALES 19 OR YOUNGER, ARIZONA, 1993-2003	
<u>Table 2</u>	9
PREGNANCY RATES BY PREGNANCY OUTCOME, AGE GROUP AND YEAR, FEMALES 19 OR YOUNGER, ARIZONA, 1993-2003	
<u>Table 3</u>	10
LIVE BIRTHS TO FEMALES 19 OR YOUNGER BY AGE GROUP, ETHNIC GROUP AND YEAR, ARIZONA, 1993-2003	
<u>Table 4</u>	11
ABORTIONS TO FEMALES 19 OR YOUNGER BY AGE GROUP, ETHNIC GROUP AND YEAR, ARIZONA, 1993-2003	
<u>Table 5</u>	12
NUMBER OF PREGNANCIES BY PREGNANCY OUTCOME, ETHNIC GROUP AND YEAR AMONG FEMALES AGED 17 OR YOUNGER WITH RATES, ARIZONA, 1993-2003	
<u>Table 6</u>	13
NUMBER OF PREGNANCIES BY PREGNANCY OUTCOME, ETHNIC GROUP AND YEAR AMONG FEMALES 15-17 YEARS OLD WITH RATES, ARIZONA, 1993-2003	
<u>Table 7</u>	14
NUMBER OF PREGNANCIES BY PREGNANCY OUTCOME, ETHNIC GROUP AND YEAR AMONG FEMALES 18-19 YEARS OLD WITH RATES, ARIZONA, 1993-2003	
<u>Table 8</u>	15
NUMBER OF PREGNANCIES BY PREGNANCY OUTCOME, ETHNIC GROUP AND YEAR AMONG FEMALES 19 OR YOUNGER WITH RATES, ARIZONA, 1993-2003	
<u>Table 9</u>	16
TRENDS IN PREGNANCY RATES BY COUNTY OF RESIDENCE AMONG FEMALES 10-17 AND 18-19 YEARS OLD, ARIZONA, 1993-2003	
<u>Table 10-A</u>	17
PREGNANCIES AND PREGNANCY RATES, FEMALES 19 OR YOUNGER BY COUNTY OF RESIDENCE, ARIZONA, 2003	
<u>Table 10-B</u>	18
BIRTHS AND BIRTH RATES, FEMALES 19 OR YOUNGER BY COUNTY OF RESIDENCE, ARIZONA, 2003	
<u>Table 11</u>	19
PREGNANCY RATES AND NUMBER OF LIVE BIRTHS, FETAL DEATHS AND ABORTIONS TO TEENS BY INDIVIDUAL AGE, ARIZONA, 2003	
<u>Table 12</u>	20
BIRTHS TO FEMALES 19 OR YOUNGER BY AGE AND COUNTY OF RESIDENCE, ARIZONA, 2003	
<u>Table 13</u>	21
ABORTIONS TO FEMALES 19 OR YOUNGER BY AGE AND COUNTY OF RESIDENCE, ARIZONA, 2003	
<u>Table 14</u>	22
SOURCES OF PAYMENT FOR LABOR AND DELIVERY, FEMALES 19 OR YOUNGER BY COUNTY OF RESIDENCE, ARIZONA, 2003	
<u>Table 15</u>	23
SOURCES OF PAYMENT FOR LABOR AND DELIVERY, FEMALES 19 OR YOUNGER BY AGE GROUP, ARIZONA, 2003	

List of Tables (continued)

<u>Table 16</u>	24
TEENAGE BIRTHS BY NUMBER OF PREVIOUS PREGNANCIES BY AGE GROUP, ARIZONA, 2003	
<u>Table 17</u>	25
TEENAGE BIRTHS BY MARITAL STATUS AND AGE GROUP, ARIZONA, 2003	
<u>Table 18</u>	26
TEENAGE BIRTHS BY MOTHER'S EDUCATION AND AGE GROUP, ARIZONA, 2003	
<u>Table 19</u>	27
TEENAGE BIRTHS BY TRIMESTER OF ENTRY INTO PRENATAL CARE AND AGE GROUP, ARIZONA, 2003	
<u>Table 20</u>	28
TEENAGE BIRTHS BY NUMBER OF PRENATAL VISITS AND AGE GROUP, ARIZONA, 2003	
<u>Table 21</u>	29
TOBACCO AND/OR ALCOHOL USE DURING PREGNANCY AMONG FEMALES 19 OR YOUNGER BY AGE GROUP, ARIZONA, 2003	
<u>Table 22</u>	30
RISK FOR LOW-BIRTHWEIGHT (LBW) BIRTHS BY SELECTED CHARACTERISTICS OF FEMALES 19 OR YOUNGER, ARIZONA, 2003	
<u>Table 23</u>	31
LIVE BIRTHS TO FEMALES 19 OR YOUNGER AS A PERCENTAGE OF TOTAL LIVE BIRTHS BY AREA, ETHNIC GROUP AND YEAR, ARIZONA. 1993-2003	
<u>Table 24</u>	32
BIRTH RATES BY AGE GROUP FOR FEMALES 19 OR YOUNGER, ARIZONA AND UNITED STATES, 1993-2003	
<u>Table 25</u>	33
REPEAT PREGNANCIES AMONG TEENAGE MOTHERS GIVING BIRTH BY AGE AND YEAR, ARIZONA, 1993-2003	
<u>Table 26</u>	34
CUMULATIVE NUMBER OF MOTHERS WHO WERE 19 OR YOUNGER IN ARIZONA IN 2003	
<u>Table 27</u>	35
POPULATION OF FEMALES 19 OR YOUNGER, NUMBER OF PREGNANCIES AND PREGNANCY RATES BY AGE GROUP AND RACE/ETHNICITY, ARIZONA, 2003	
<u>Table 28</u>	36
POPULATION OF FEMALES 19 OR YOUNGER BY COUNTY OF RESIDENCE, ARIZONA 2003	

PURPOSE

This report is the 2003 update of information about pregnancies among females under age 20. The data for 2003 are placed in a temporal context by comparison with the data for the preceding years.

METHODS AND SOURCES

In this report, pregnancies are measured as the sum of three components: live births, fetal deaths (or stillbirths) and reported abortions to Arizona resident women, unless otherwise specified. Not included are spontaneous fetal losses that occur at less than 20 weeks of gestation. Induced terminations of pregnancy do not include those performed out-of-state to Arizona residents, since they are not reported. Pregnancy statistics for Arizona are not available on a sub-county level.

Teens or teenagers are defined as 10-14 year old preadolescents and adolescents 15-19 years of age. Where possible, the data presented distinguish 18-19 year old teenagers from those aged 15-17 and girls less than 15 years of age.

The primary source documents for the data are the certificates of live births, certificates of fetal deaths and reports of induced terminations of pregnancy filed with the Arizona Department of Health Services.

Population denominators for Arizona's resident females, used to calculate rates, are projections from the Population Statistics Unit in the Arizona Department of Economic Security (data for 1993-1999) or census enumerations from the U.S. Census Bureau (data for 1980, 1990 and 2000).

In order to obtain the population denominators for 2001-2003, the 2000 percentages of population breakdowns (or census shares) by age group and gender were applied to total state and total county annual population estimates released by the Department of Economic Security.

DATA ORGANIZATION

Tables 1-9 present annual numbers and rates of pregnancy, fertility and abortion by year from 1993 to 2003, age group and ethnicity for Arizona adolescents. Temporal trends and changes may be assessed from these data. Table 11 provides pregnancy rates by single year of age among females aged 19 and younger. Tables 9-10 and 12-14 provide data by county of residence. Live births to teenage mothers are also reported in Tables 15-22 by marital status, education, previous pregnancies, trimester of entry into prenatal care, source of payment for labor and delivery and tobacco and alcohol use during pregnancy. Proportional contribution of teen births to all births is shown in Table 23 by area of residence and ethnic group in Arizona from 1993 to 2003. Table 24 compares birth rates in Arizona and United States.

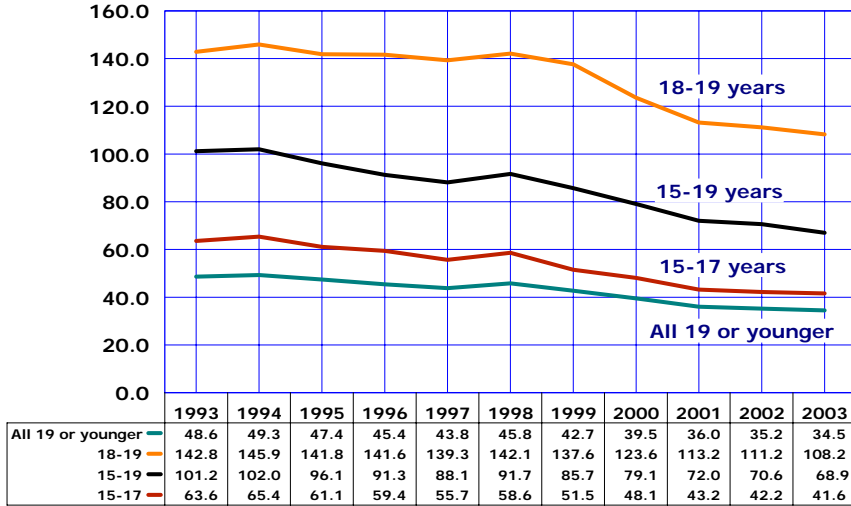
The annual numbers of repeat pregnancies among teenage mothers are shown by age and year from 1993 to 2003 in Table 25. The estimated number of mothers who were under the age of 20 in Arizona in 2003 is given in Table 26. The 2003 population denominators for Arizona resident females by age group and county of residence, as well as by age group and ethnicity are presented in Table 27 and Table 28.

KEY FINDINGS

The following section presents some illustrative findings contained in the figures and tables of the report. It is not intended to be an exhaustive analysis of the tabulated data.

KEY FINDINGS

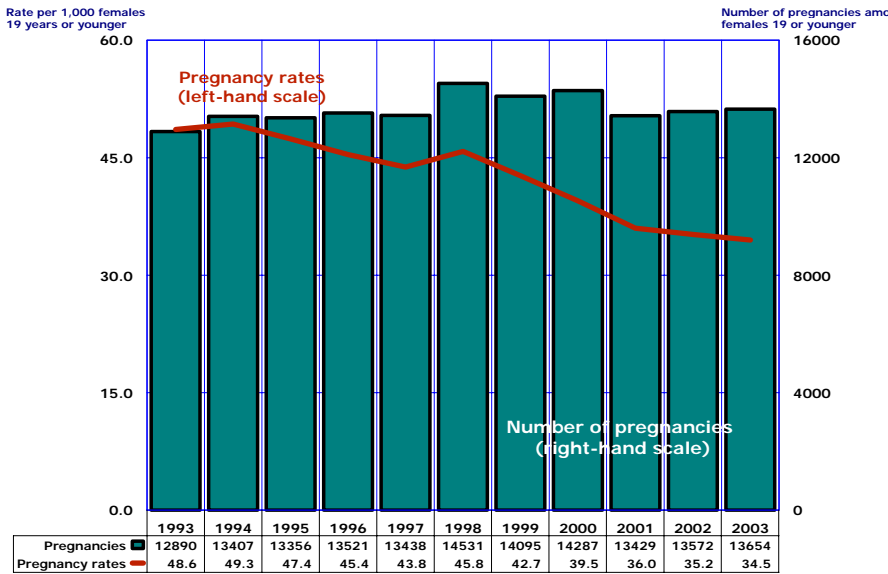
Figure 1
Pregnancy Rates by Age Group and Year Among Females 19 and Younger, Arizona, 1993-2003



Note: All rates are per 1,000 females in specified age group.

The pregnancy rate for Arizona teenagers 15-19 years old in 2003 was 68.9 pregnancies per 1,000 females (Figure 1), 2.4 percent lower than in 2002 and 32.5 percent lower than in 1994 when it reached the decade's peak of 102.0/1,000. The pregnancy rate for younger teenagers 15-17 years also reached a record low in 2003, dropping to 41.6/1,000, a 36.4 percent lower rate than in 1994. Similarly, the pregnancy rate for older teenagers declined in 2003 to 108.2/1,000, down 2.7 percent from 2002, and 25.8 percent from a rate of 145.9/1,000 in 1994 (Figure 1).

Figure 2
Trends in the Number of Pregnancies and Pregnancy Rates Among Females 19 Years and Younger, Arizona, 1993-2003



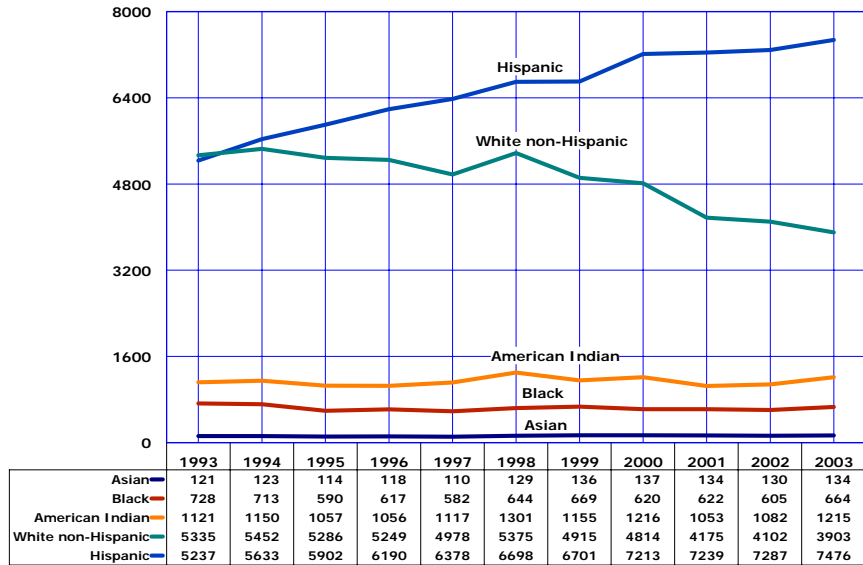
Pregnancy rate=The number of pregnancies per 1,000 females in specified age group.

The pregnancy rate measures the proportion of teenagers becoming pregnant in a given year; the relative "risk for pregnancy" in a population "at risk". The number of pregnancies is, however, also determined by the size of the population "at risk": by the number of teenage females in the population. While the teen pregnancy rate has fallen in Arizona, the drop in the rate has not been enough to offset the growth in the female teenage population. **Compared to 1993, there were no fewer teen pregnancies in 2003 (12,890 and 13,654 respectively) (Figure 2), but fewer pregnancies per 1,000 teenage females.**

KEY FINDINGS

Figure 3
Trends in the Number of Pregnancies* by Race/Ethnicity
Among Females 19 Years and Younger,
Arizona, 1993-2003

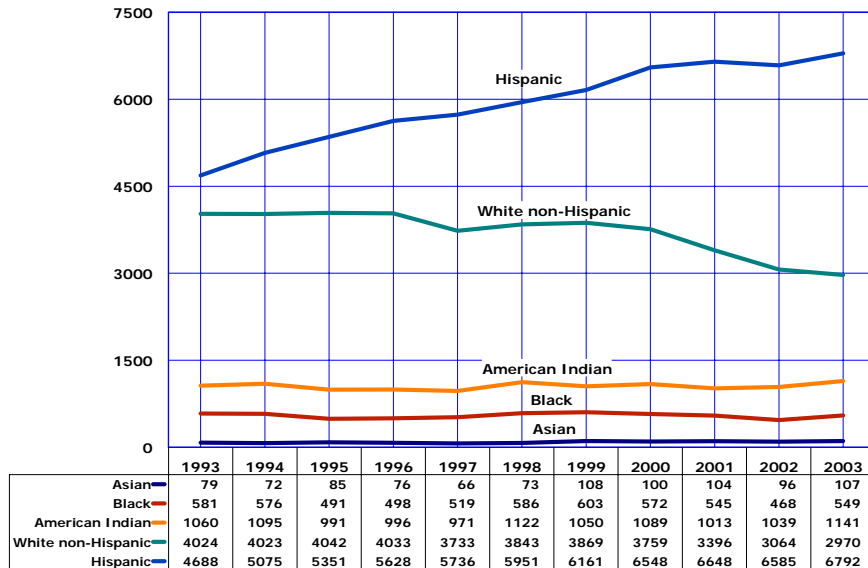
In 1993, 5,335 out of 10,438 (or 51.1 percent) of pregnancies to females 19 years or younger were to White non-Hispanic females. The number of pregnancies to Hispanic females aged 19 years or younger exceeded the number of pregnancies among white non-Hispanic peers in every year since 1994 (Figure 3, Table 1, Table 8). In 2003, Hispanic or Latino mothers accounted for 63.9 percent of all pregnancies in this age group. The number of pregnancies among American Indians, Blacks and Asian remained virtually unchanged from 1993 to 2003.



*The sum of live births+induced abortions+spontaneous fetal deaths.

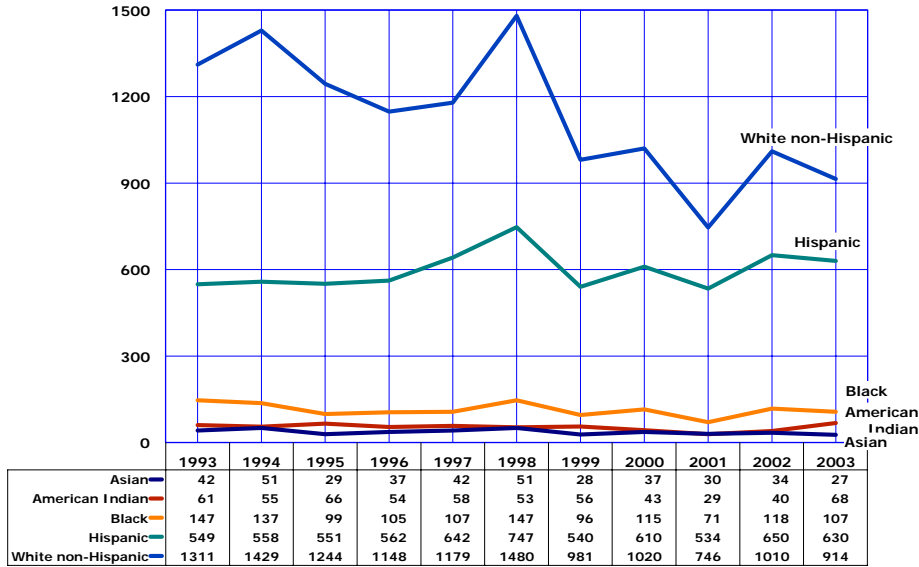
Figure 4
Trends in the Number of Live Births by Race/Ethnicity
Among Females 19 Years and Younger,
Arizona, 1993-2003

The number of live births to Hispanic or Latino mothers aged 19 years and younger exceeded the number of births among White non-Hispanic peers in every year from 1993 to 2003 (Figure 4, Table 3, Table 8). The combined number of live births to American Indian, Black or African American, and Asian or Pacific Islander mothers changed very little from 1,720 in 1993 to 1,797 in 2003.



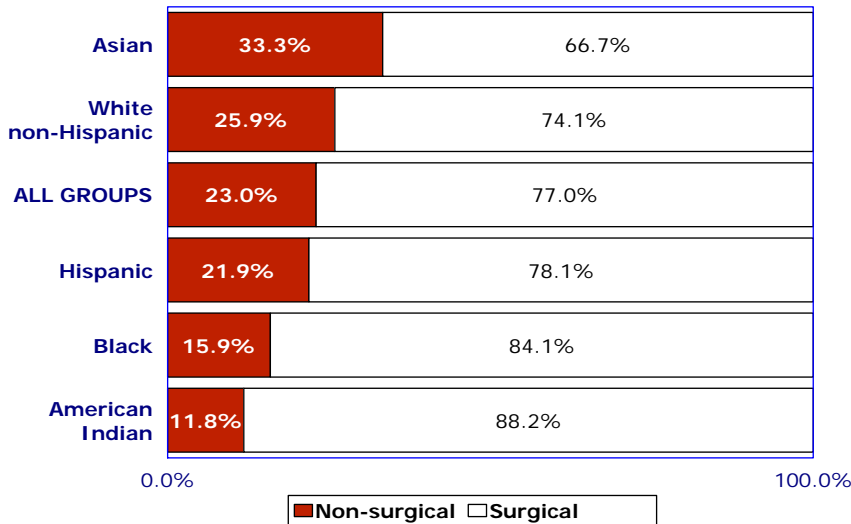
KEY FINDINGS

Figure 5
Trends in the Number of Induced Abortions by Race/Ethnicity
Among Females 19 Years and Younger,
Arizona, 1993-2003



The number of abortions to females 19 years or younger declined from 2,357 in 1993 to 1,867 in 2003 (Table 1). White non-Hispanic, Asian and Black or African American females accounted for the entire decrease in the number of abortions. In contrast, the number of abortions among both Hispanic and American Indian teens was greater in 2003 than in 1993 (Figure 5, Table 4).

Figure 6
Proportional Contribution of Non-Surgical and Surgical
Abortions by Race/Ethnicity Among Females 19 Years and
Younger, Arizona, 2003



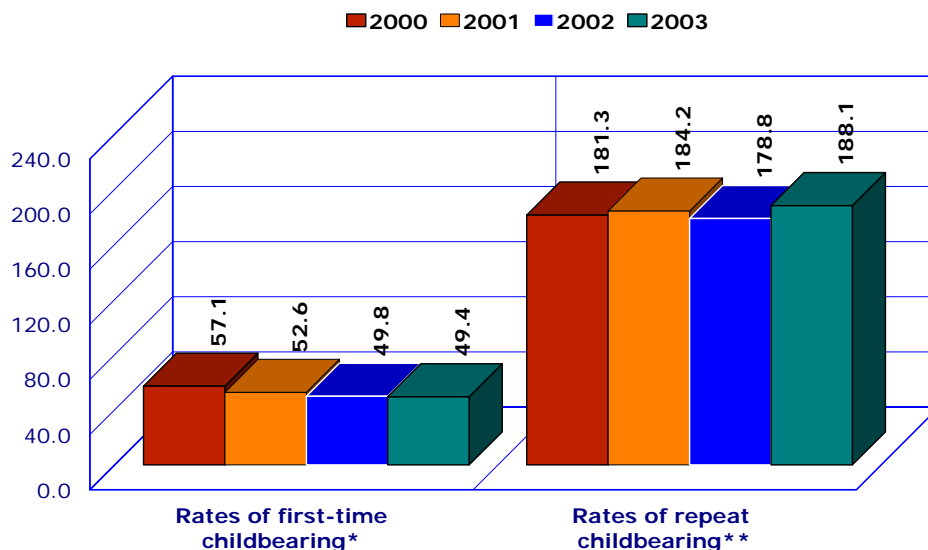
In 2003, non-surgical (also called "medical") abortions made up approximately 23 percent of all procedures reported for teenage females in Arizona. Only among Asian or Pacific Islander and White non-Hispanic teens the proportion of non-surgical abortions exceeded the average for all groups (Figure 6). The ratios of non-surgical abortions among Black and American Indian females were the lowest among ethnic groups.

Non-surgical: Mifepristone, Methotrexate, RU486, etc.

KEY FINDINGS

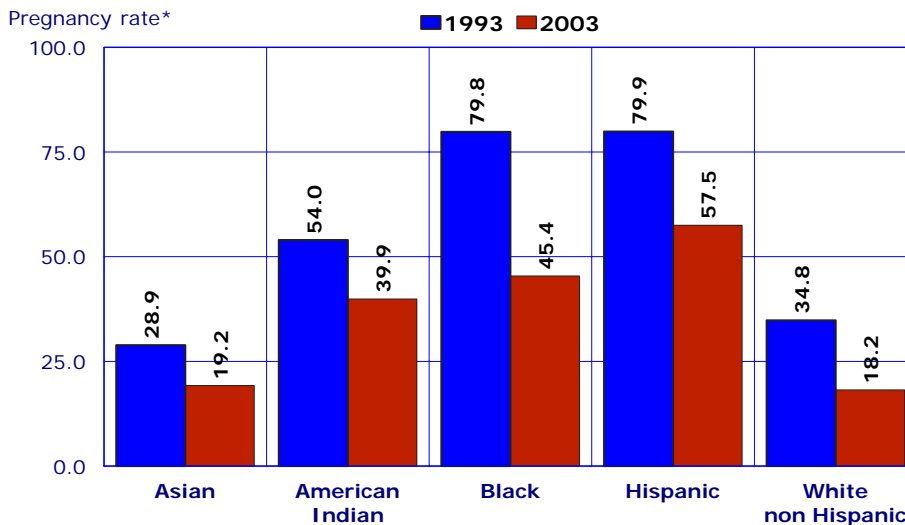
The declines from 2000 to 2003 in teenage birth rates have reflected reductions in the first but not the repeat birth rates (Figure 7). The first birth rate for childless teenagers has dropped 13.5 percent since 2000. In contrast, the repeat birth rate for teenagers who had already had a child increased to 188.1 pregnancies per 1,000 females aged 15-19 years in 2003 (Figure 3). To put it another way, 19 percent of teenagers who already had one child gave birth again in 2003 (computations based on data in Table 26 in this report and Table 1B-24 of the *Arizona Health Status and Vital Statistics 2003* report).

Figure 7
Rates of First and Repeat Births to Females Aged 15-19 Years, Arizona, 2000-2003



* Number of first births per 1,000 females 15-19 years old who have not had a birth.
** Number of repeat births per 1,000 females 15-19 years old who have had a birth previously.

Figure 8
Comparison of Pregnancy Rates* by Ethnic Group Among Females Aged 19 and Younger in Arizona in 1993 and 2003

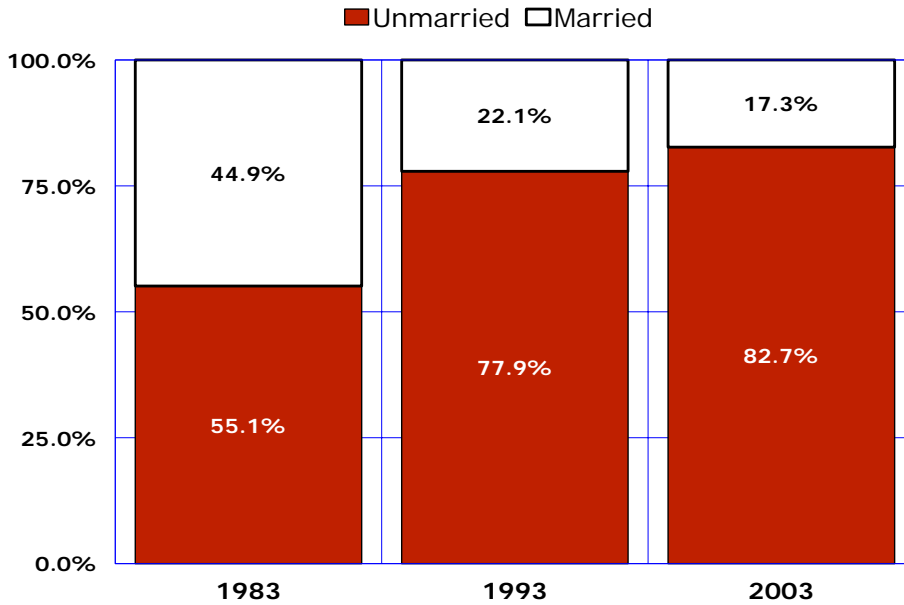


* Number of pregnancies per 1,000 females 10-19 years old in specified group.

Between 1993 and 2003, pregnancy rates declined for all age, race, and Hispanic origin populations (Figure 8) with the steepest declines recorded for White non-Hispanic (47.7 percent decline) and Black or African American teens (43.1 percent decline). Both in 1993 and 2003 the pregnancy rate among Hispanic or Latino females was the highest among the race/ethnic groups in Arizona.

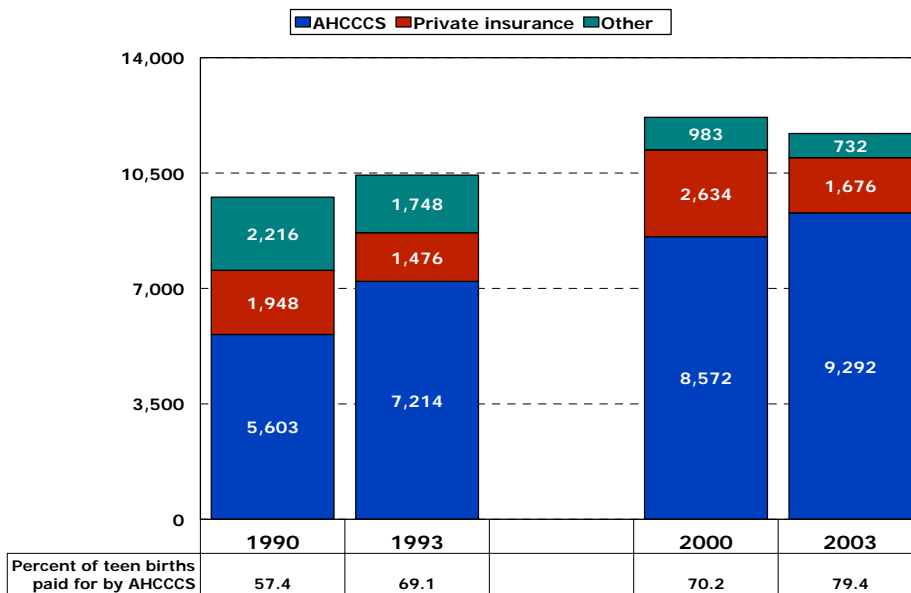
KEY FINDINGS

Figure 9
Births to Mothers 15-19 Years Old by Marital Status,
Arizona, 1983, 1993 and 2003



Unwed mothers have accounted for an increasing annual proportion of births throughout the 1980s and 1990s. Two decades ago, the proportion of nonmarital births among teenagers aged 15-19 years was still around 50 percent (Figure 10). In 2003, nonmarital births accounted for eighty-three percent of births to mothers 15-19 years old.

Figure 10
Number of Births to Mothers 19 Years or Younger by
Payee, Arizona, 1990, 1993, 2000, 2003



In 2003, the Arizona Health Care Cost Containment System (AHCCCS) paid for 79.4 percent of the deliveries to mothers 19 or younger (Table 15), compared to 57.4 percent in 1990 (Figure 10).

The total number of births to mothers 19 years or younger increased by 19.8 percent from 9,767 in 1990 to 11,700 in 2003. In contrast, the number of teen births paid for by the AHCCCS increased by 65.8 percent from 5,603 in 1990 to 9,292 in 2003.

TEENAGE PREGNANCY, ARIZONA, 1993-2003

DATA TABLES

**TABLE 1
PREGNANCIES AND PREGNANCY OUTCOMES BY AGE GROUP AND YEAR,
FEMALES 19 OR YOUNGER, ARIZONA, 1993–2003**

Pregnancy Outcome by Year	Total, Females 19 Years or Younger	Under 15 Years	15-19 Years Old		
			Total	15-17 Years	18-19 Years
ALL PREGNANCIES					
1993	12,890	256	12,634	4,803	7,831
1994	13,407	333	13,074	5,092	7,982
1995	13,356	314	13,042	5,092	7,950
1996	13,521	293	13,228	5,262	7,966
1997	13,438	278	13,160	5,096	8,064
1998	14,531	316	14,216	5,482	8,734
1999	14,095	303	13,792	4,993	8,799
2000	14,287	278	14,009	5,016	8,993
2001	13,429	253	13,170	4,661	8,515
2002	13,572	255	13,317	4,696	8,621
2003	13,654	272	13,382	4,755	8,627
LIVE BIRTHS					
1993	10,438	187	10,251	3,870	6,381
1994	10,858	246	10,612	4,132	6,480
1995	10,973	229	10,744	4,178	6,566
1996	11,247	216	11,031	4,340	6,691
1997	11,085	214	10,871	4,219	6,652
1998	11,695	234	11,461	4,397	7,064
1999	11,963	238	11,725	4,236	7,489
2000	12,189	216	11,973	4,284	7,689
2001	11,790	198	11,592	4,080	7,512
2002	11,474	206	11,268	3,952	7,316
2003	11,700	211	11,489	4,110	7,379
ABORTIONS					
1993	2,357	68	2,289	892	1,397
1994	2,458	82	2,376	916	1,460
1995	2,294	82	2,212	880	1,332
1996	2,186	72	2,114	892	1,222
1997	2,233	56	2,177	826	1,351
1998	2,735	78	2,657	1,046	1,611
1999	2,046	60	1,986	727	1,259
2000	1,988	57	1,931	684	1,247
2001	1,528	46	1,482	540	942
2002	1,995	44	1,951	705	1,246
2003	1,867	60	1,807	614	1,193
FETAL LOSSES					
1993	95	1	94	41	53
1994	91	5	86	44	42
1995	89	3	86	34	52
1996	88	5	83	30	53
1997	120	8	112	51	61
1998	102	4	98	39	59
1999	85	5	80	29	51
2000	110	5	105	48	57
2001	111	9	102	41	61
2002	103	5	98	39	59
2003	87	1	86	31	55

**TABLE 2
PREGNANCY RATES¹ BY PREGNANCY OUTCOME, AGE GROUP AND YEAR,
FEMALES 19 OR YOUNGER, ARIZONA, 1993-2003**

Pregnancy Outcome by Year	Total, Females 19 Years or Younger	Under 15 Years	15-19 Years Old		
			Total	15-17 Years	18-19 Years
ALL PREGNANCIES					
1993	48.6	1.8	101.2	63.6	142.8
1994	49.3	2.3	102.0	65.4	145.9
1995	47.4	2.2	96.1	61.1	141.8
1996	45.4	1.9	91.3	59.4	141.6
1997	43.8	1.8	88.1	55.7	139.3
1998	45.8	2.0	91.7	58.6	142.1
1999	42.7	1.8	85.7	51.5	137.6
2000	39.5	1.5	79.1	48.1	123.6
2001	36.0	1.3	72.0	43.2	112.2
2002	35.2	1.3	70.6	42.2	111.2
2003	34.5	1.4	67.0	41.6	108.2
LIVE BIRTHS					
1993	39.4	1.3	82.1	51.2	116.4
1994	39.9	1.7	82.8	53.0	118.5
1995	38.9	1.6	79.1	50.1	117.1
1996	37.8	1.4	76.1	49.0	119.0
1997	36.1	1.4	72.8	46.1	114.9
1998	36.9	1.4	73.9	47.0	114.9
1999	36.2	1.4	72.9	43.7	117.1
2000	33.7	1.2	67.6	41.1	105.7
2001	31.6	1.0	63.3	37.8	99.9
2002	29.8	1.0	59.7	35.5	94.3
2003	29.5	1.0	59.2	35.9	92.5
ABORTIONS					
1993	8.9	0.5	18.3	11.8	25.5
1994	9.0	0.6	18.5	11.8	26.7
1995	8.1	0.6	16.3	10.6	23.8
1996	7.4	0.5	14.6	10.1	21.7
1997	7.3	0.4	14.6	9.0	23.3
1998	8.6	0.5	17.1	11.2	26.2
1999	6.1	0.3	12.3	7.5	19.7
2000	5.5	0.3	10.9	6.6	17.1
2001	4.1	0.2	8.1	5.0	12.5
2002	5.2	0.2	10.3	6.3	16.1
2003	4.7	0.3	9.3	5.4	15.0
FETAL LOSSES					
1993	0.4	0.0	0.8	0.5	1.0
1994	0.3	0.0	0.7	0.6	0.8
1995	0.3	0.0	0.6	0.4	0.9
1996	0.3	0.0	0.6	0.3	0.9
1997	0.4	0.0	0.7	0.6	1.0
1998	0.3	0.0	0.6	0.4	1.0
1999	0.3	0.0	0.5	0.3	0.8
2000	0.3	0.0	0.6	0.5	0.8
2001	0.3	0.0	0.6	0.4	0.8
2002	0.3	0.0	0.5	0.4	0.8
2003	0.2	0.0	0.4	0.3	0.7

¹ The number of pregnancies (live births + abortions + fetal deaths) per 1,000 females in specified age group.

0.0: Quantity more than zero but less than 0.05.

**TABLE 3
LIVE BIRTHS TO FEMALES 19 OR YOUNGER BY AGE GROUP,
ETHNIC GROUP AND YEAR, ARIZONA, 1993-2003**

Ethnic Group and Year	Total, Females 19 Years or Younger	Under 15 Years	15-19 Years Old		
			Total	15-17 Years	18-19 Years
WHITE NON HISPANIC					
1993	4,024	51	3,973	1,343	2,630
1994	4,023	61	3,962	1,392	2,570
1995	4,042	51	3,991	1,338	2,653
1996	4,033	40	3,993	1,368	2,625
1997	3,733	27	3,706	1,239	2,467
1998	3,843	38	3,805	1,261	2,544
1999	3,869	31	3,838	1,115	2,723
2000	3,759	38	3,721	1,040	2,681
2001	3,396	34	3,362	926	2,436
2002	3,064	23	3,041	824	2,217
2003	2,970	23	2,947	782	2,165
HISPANIC OR LATINO					
1993	4,688	102	4,586	1,837	2,749
1994	5,075	138	4,937	2,066	2,871
1995	5,351	133	5,218	2,241	2,977
1996	5,628	132	5,496	2,308	3,188
1997	5,736	146	5,590	2,329	3,261
1998	5,951	142	5,809	2,419	3,390
1999	6,161	149	6,012	2,415	3,597
2000	6,548	144	6,404	2,567	3,837
2001	6,648	132	6,516	2,552	3,964
2002	6,585	147	6,438	2,507	3,931
2003	6,792	146	6,646	2,600	4,046
BLACK OR AFRICAN AMERICAN					
1993	581	12	569	241	328
1994	576	14	562	223	339
1995	491	17	474	185	289
1996	498	10	488	220	268
1997	519	13	506	207	299
1998	586	16	570	223	347
1999	603	14	589	222	367
2000	572	12	560	198	362
2001	545	13	532	193	339
2002	468	12	456	152	304
2003	549	3	546	204	342
AMERICAN INDIAN OR ALASKA NATIVE					
1993	1,060	20	1,040	419	621
1994	1,095	32	1,063	421	642
1995	991	25	966	387	579
1996	996	28	968	401	567
1997	971	25	946	407	539
1998	1,122	31	1,091	429	662
1999	1,050	38	1,012	389	623
2000	1,089	20	1,069	405	664
2001	1,013	17	996	348	648
2002	1,039	18	1,021	374	647
2003	1,141	37	1,104	434	670
ASIAN OR PACIFIC ISLANDER					
1993	79	2	77	29	48
1994	72	1	71	25	46
1995	85	2	83	23	60
1996	76	3	73	36	37
1997	66	1	65	17	48
1998	73	1	72	17	55
1999	108	1	107	28	79
2000	100	1	99	29	70
2001	104	0	104	29	75
2002	96	1	95	19	76
2003	107	1	106	38	68

Note: See Table 1 for the number of births for all ethnic groups.

**TABLE 4
ABORTIONS TO FEMALES 19 OR YOUNGER BY AGE GROUP,
ETHNIC GROUP AND YEAR, ARIZONA, 1993-2003**

Ethnic Group and Year	Total, Females 19 Years or Younger	Under 15 Years	15-19 Years Old		
			Total	15-17 Years	18-19 Years
WHITE NON HISPANIC					
1993	1,311	29	1,282	504	778
1994	1,429	41	1,388	552	836
1995	1,244	33	1,211	481	730
1996	1,148	27	1,121	478	643
1997	1,179	29	1,150	433	717
1998	1,480	38	1,442	563	879
1999	981	26	955	369	586
2000	1,020	25	995	342	653
2001	746	16	730	262	458
2002	1,010	20	990	367	623
2003	914	18	896	304	592
HISPANIC OR LATINO					
1993	549	21	528	198	330
1994	558	21	537	200	337
1995	551	30	521	204	317
1996	562	23	539	218	321
1997	642	21	621	240	381
1998	747	29	718	292	426
1999	540	16	524	183	341
2000	610	22	588	228	360
2001	534	22	512	199	313
2002	650	15	635	235	400
2003	630	27	603	197	406
BLACK OR AFRICAN AMERICAN					
1993	147	4	143	49	94
1994	137	7	130	42	88
1995	99	4	95	34	61
1996	105	6	99	44	55
1997	107	0	107	40	67
1998	147	4	143	51	92
1999	96	7	89	27	62
2000	115	5	110	42	68
2001	71	3	68	28	40
2002	118	4	114	30	84
2003	107	6	101	40	61
AMERICAN INDIAN OR ALASKA NATIVE					
1993	61	3	58	18	40
1994	55	2	53	15	38
1995	66	3	63	24	39
1996	54	4	40	18	32
1997	58	2	56	17	39
1998	53	0	53	22	31
1999	56	3	53	17	36
2000	43	2	41	13	28
2001	29	3	26	7	19
2002	40	3	37	12	25
2003	68	3	65	25	40
ASIAN OR PACIFIC ISLANDER					
1993	42	0	42	10	32
1994	51	1	50	15	35
1995	29	0	29	11	18
1996	37	1	36	9	27
1997	42	0	42	19	23
1998	51	0	51	20	31
1999	28	1	27	10	17
2000	37	0	37	11	26
2001	30	0	30	15	15
2002	34	0	34	10	24
2003	27	1	26	7	19

Note: See Table 1 for the number of abortions for all ethnic groups.

**TABLE 5
NUMBER OF PREGNANCIES¹ BY PREGNANCY OUTCOME, ETHNIC GROUP AND YEAR
AMONG FEMALES AGED 17 OR YOUNGER WITH RATES², ARIZONA, 1993-2003**

Ethnicity/Pregnancy Outcome	1993	1994	1995	1996	1997	1998	1999	2000	2001	2002	2003	2003 Rates
WHITE NON-HISPANIC³, total:	1,927	2,046	1,903	1,937	1,760	1,918	1,566	1,462	1,250	1,245	1,131	6.7
Births	1,394	1,453	1,389	1,408	1,266	1,299	1,146	1,078	960	847	805	4.7
Abortions	533	593	514	505	462	601	395	367	278	387	322	1.9
HISPANIC OR LATINO, total:	2,185	2,425	2,608	2,681	2,736	2,882	2,763	2,991	2,930	2,926	2,993	28.8
Births	1,939	2,204	2,374	2,440	2,475	2,561	2,564	2,711	2,684	2,654	2,746	26.4
Abortions	219	221	234	241	261	321	199	250	221	250	224	2.2
BLACK OR AFRICAN AMERICAN, total:	306	286	240	289	242	263	275	227	240	207	256	21.6
Births	253	237	202	230	220	239	236	210	206	164	207	17.5
Abortions	53	49	38	50	40	55	34	47	31	34	46	3.9
AMERICAN INDIAN OR ALASKA NATIVE, total:	460	470	439	453	489	530	450	476	384	409	501	20.0
Births	439	453	412	429	432	460	427	425	365	392	471	18.8
Abortions	21	17	27	22	19	22	20	15	10	15	28	1.1
ASIAN OR PACIFIC ISLANDER, total:	41	42	36	54	38	43	40	41	44	30	47	8.8
Births	31	26	25	39	18	18	29	30	29	20	39	7.3
Abortions	10	16	11	10	19	20	11	11	15	10	8	1.5
ALL ETHNIC GROUPS⁴, total:	5,059	5,425	5,406	5,555	5,374	5,798	5,296	5,294	4,914	4,951	5,027	15.9
Births	4,057	4,378	4,407	4,556	4,433	4,631	4,474	4,500	4,278	4,158	4,321	13.7
Abortions	960	998	962	964	882	1,124	787	741	586	749	674	2.1
PREGNANCY RATE, total:	23.5	24.2	23.6	23.1	22.0	22.7	19.9	18.4	16.5	16.1	15.9	
Fertility rate⁵	18.8	19.7	19.2	18.9	18.2	18.1	16.8	15.6	14.3	13.5	13.7	
Abortion rate	4.5	4.5	4.2	4.0	3.5	4.4	3.0	2.6	2.0	2.4	2.1	

¹Fetal deaths are included in the total counts of pregnancies.

²All rates per 1,000 females 10-17 years old.

³Not of Hispanic origin.

⁴Includes other and unspecified ethnicity.

⁵Number of births per 1,000 females 10-17 years old.

**TABLE 6
NUMBER OF PREGNANCIES¹ BY PREGNANCY OUTCOME, ETHNIC GROUP AND YEAR
AMONG FEMALES 15-17 YEARS OLD WITH RATES², ARIZONA, 1993-2003**

Ethnicity/Pregnancy Outcome	1993	1994	1995	1996	1997	1998	1999	2000	2001	2002	2003	2003 Rates
WHITE NON-HISPANIC³, total:	1,847	1,944	1,819	1,867	1,699	1,841	1,505	1,397	1,197	1,202	1,090	17.5
Births	1,343	1,392	1,338	1,368	1,239	1,261	1,115	1,040	926	824	782	12.5
Abortions	504	552	481	478	433	563	369	342	262	367	304	4.9
HISPANIC OR LATINO, total:	2,035	2,266	2,445	2,526	2,569	2,711	2,598	2,823	2,771	2,761	2,819	76.5
Births	1,837	2,066	2,241	2,308	2,329	2,419	2,415	2,567	2,552	2,507	2,600	70.5
Abortions	198	200	204	218	240	292	183	228	199	235	197	5.3
BLACK OR AFRICAN AMERICAN, total:	290	265	219	271	250	276	254	242	224	189	247	59.8
Births	241	223	185	220	207	223	222	198	193	152	204	49.4
Abortions	49	42	34	44	40	51	27	42	28	30	40	9.7
AMERICAN INDIAN OR ALASKA NATIVE, total:	437	436	411	421	439	464	408	421	363	388	461	52.0
Births	419	421	387	401	407	429	389	405	348	374	434	49.0
Abortions	18	15	24	18	17	22	17	13	7	12	25	2.8
ASIAN OR PACIFIC ISLANDER, total:	39	40	34	50	37	42	38	40	44	29	45	22.0
Births	29	25	23	36	17	17	28	29	29	19	38	18.5
Abortions	10	15	11	9	19	20	10	11	15	10	7	3.4
ALL ETHNIC GROUPS⁴, total:	4,803	5,092	5,092	5,262	5,096	5,482	4,993	5,016	4,661	4,696	4,755	41.6
Births	3,870	4,132	4,178	4,340	4,219	4,397	4,236	4,284	4,080	3,952	4,110	35.9
Abortions	892	916	880	892	826	1,046	727	684	540	705	614	5.4
PREGNANCY RATE, total:	63.6	65.4	61.1	59.4	55.7	58.6	51.5	48.1	43.2	42.2	41.6	
Fertility rate⁵	51.2	53.0	50.1	49.0	46.1	47.0	43.7	41.1	37.8	35.5	35.9	
Abortion rate	11.8	11.8	10.6	10.1	9.0	11.2	7.5	6.6	5.0	6.3	5.4	

¹ Fetal deaths are included in the total counts of pregnancies.

² All rates per 1,000 females 15-17 years old.

³ Not of Hispanic origin.

⁴ Includes other and unspecified ethnicity.

⁵ Number of births per 1,000 females 15-17 years old.

**TABLE 7
NUMBER OF PREGNANCIES¹ BY PREGNANCY OUTCOME, ETHNIC GROUP AND
YEAR AMONG FEMALES 18-19 YEARS OLD WITH RATES², ARIZONA, 1993-2003**

Ethnicity/Pregnancy Outcome	1993	1994	1995	1996	1997	1998	1999	2000	2001	2002	2003	2003 Rates
WHITE NON-HISPANIC³, total:	3,408	3,406	3,383	3,312	3,218	3,457	3,349	3,352	2,925	2,857	2,772	62.9
Births	2,630	2,570	2,653	2,625	2,467	2,544	2,723	2,681	2,436	2,217	2,165	49.2
Abortions	778	836	730	643	717	879	586	653	468	623	592	13.4
HISPANIC OR LATINO, total:	3,079	3,208	3,234	3,509	3,642	3,816	3,938	4,222	4,309	4,361	4,483	172.7
Births	2,749	2,871	2,977	3,188	3,261	3,390	3,597	3,837	3,964	3,931	4,046	155.9
Abortions	330	337	317	321	381	426	341	360	313	400	406	15.6
BLACK OR AFTICAN AMERICAN, total:	422	427	350	328	368	442	434	433	382	398	408	147.5
Births	328	339	289	268	299	347	367	362	339	304	342	123.6
Abortions	94	88	61	55	67	92	62	68	40	84	61	22.1
AMERICAN INDIAN OR ALASKA NATIVE, total:	661	680	618	603	600	710	665	700	669	673	714	134.2
Births	621	642	579	567	539	662	623	664	648	647	670	126.0
Abortions	40	38	39	32	39	31	36	28	19	25	40	7.5
ASIAN OR PACIFIC ISLANDER, total:	80	81	78	64	72	86	96	96	90	100	87	52.1
Births	48	46	60	37	48	55	79	70	75	76	68	40.7
Abortions	32	35	18	27	23	31	17	26	15	24	19	11.4
ALL ETHNIC GROUPS,⁴ total:	7,831	7,982	7,950	7,966	8,064	8,734	8,799	8,993	8,515	8,621	8,627	108.2
Births	6,381	6,480	6,566	6,691	6,652	7,064	7,489	7,689	7,512	7,316	7,379	92.5
Abortions	1,397	1,460	1,332	1,222	1,351	1,611	1,259	1,247	942	1,246	1,193	15.0
PREGNANCY RATE, total:	142.8	145.9	141.8	141.6	139.3	142.1	137.6	123.6	113.2	111.2	108.2	
Fertility rate⁵	116.4	118.5	117.1	119.0	114.9	114.9	117.1	105.7	99.9	94.3	92.5	
Abortion rate	25.5	26.7	23.8	21.7	23.3	26.2	19.7	17.1	12.5	16.1	15.0	

¹ Fetal deaths are included in the total count of pregnancies.
² All rates per 1,000 females 18-19 years old.
³ Not of Hispanic origin.
⁴ Includes other and unspecified ethnicity.
⁵ Number of births per 1,000 females 18-19 years old.

**TABLE 8
NUMBER OF PREGNANCIES¹ BY PREGNANCY OUTCOME, ETHNIC GROUP AND YEAR
AMONG FEMALES 19 OR YOUNGER WITH RATES², ARIZONA, 1993-2003**

Ethnicity/Pregnancy Outcome	1993	1994	1995	1996	1997	1998	1999	2000	2001	2002	2003	2003 Rates
WHITE NON-HISPANIC³, total:	5,335	5,452	5,286	5,249	4,978	5,375	4,915	4,814	4,175	4,102	3,903	18.2
Births	4,024	4,023	4,042	4,033	3,733	3,843	3,869	3,759	3,396	3,064	2,970	13.9
Abortions	1,311	1,429	1,244	1,148	1,179	1,480	981	1,020	746	1,010	914	4.3
HISPANIC OR LATINO, total:	5,237	5,633	5,902	6,190	6,378	6,698	6,701	7,213	7,239	7,287	7,476	57.5
Births	4,688	5,075	5,351	5,628	5,736	5,951	6,161	6,548	6,648	6,585	6,792	52.2
Abortions	549	558	551	562	642	747	540	610	534	650	630	4.8
BLACK OR AFRICAN AMERICAN, total:	728	713	590	617	582	644	669	620	622	605	664	45.4
Births	581	576	491	498	519	586	603	572	545	468	549	37.5
Abortions	147	137	99	105	107	147	96	115	71	118	107	7.3
AMERICAN INDIAN OR ALASKA NATIVE, total:	1,121	1,150	1,057	1,056	1,117	1,301	1,155	1,216	1,053	1,082	1,215	39.9
Births	1,060	1,095	991	996	971	1,122	1,050	1,089	1,013	1,039	1,141	37.5
Abortions	61	55	66	54	58	53	56	43	29	40	68	2.2
ASIAN OR PACIFIC ISLANDER, total:	121	123	114	118	110	129	136	137	134	130	134	19.2
Births	79	72	85	76	66	73	108	100	104	96	107	15.3
Abortions	42	51	29	37	42	51	28	37	30	34	27	3.9
ALL ETHNIC GROUPS⁴, total:	12,890	13,407	13,356	13,521	13,438	14,532	14,095	14,287	13,429	13,572	13,654	34.5
Births	10,438	10,858	10,973	11,247	11,085	11,695	11,963	12,189	11,790	11,474	11,700	29.5
Abortions	2,357	2,458	2,294	2,186	2,233	2,735	2,046	1,988	1,528	1,995	1,867	4.7
PREGNANCY RATE, total:	48.6	49.3	47.4	45.4	43.8	45.8	42.7	39.5	36.0	35.2	34.5	
Fertility rate⁵	39.4	39.9	38.9	37.8	36.1	36.9	36.2	33.7	31.6	29.8	29.5	
Abortion rate	8.9	9.4	8.1	7.4	7.3	8.6	6.2	5.5	4.1	5.2	4.7	

¹ Fetal deaths are included in the total counts of pregnancies.

² All rates per 1,000 females 19 or less years old.

³ Not of Hispanic origin.

⁴ Includes other and unspecified ethnicity.

⁵ Number of births per 1,000 females 19 or less years old.

**TABLE 9
TRENDS IN PREGNANCY RATES* BY COUNTY OF RESIDENCE AMONG FEMALES 10-17 AND 18-19 YEARS OLD,
ARIZONA, 1993-2003**

	ARIZONA	APACHE	COCHISE	COCONINO	GILA	GRAHAM	GREENLEE	MARICOPA	MOHAVE	NAVAJO	PIMA	PINAL	SANTA CRUZ	YAVAPAI	YUMA	LA PAZ	
19 YEARS OR YOUNGER	1992	48.4	37.4	40.6	29.3	55.1	31.1	27.5	52.4	43.2	43.9	42.3	59.8	48.8	37.4	50.4	40.7
	1993	48.6	39.0	44.8	43.3	50.3	37.3	41.1	50.4	48.3	43.4	46.4	58.2	48.5	35.3	55.0	37.4
	1994	49.3	37.2	39.7	38.9	48.6	34.3	35.4	51.7	46.2	41.0	49.2	58.4	46.7	35.1	54.5	44.2
	1995	47.4	31.7	42.9	39.6	40.5	28.9	51.8	48.9	45.2	42.1	45.5	50.8	44.6	37.0	54.0	45.2
	1996	45.4	29.6	37.5	39.7	42.4	40.1	53.6	47.1	44.2	37.0	44.3	47.9	42.3	34.9	50.1	29.8
	1997	43.8	30.4	39.8	31.7	45.0	41.3	46.1	44.6	42.6	37.4	43.1	46.8	43.1	32.4	48.6	44.1
	1998	45.8	30.2	36.2	28.0	45.4	36.3	43.3	46.9	40.1	41.9	43.1	49.4	48.3	37.0	46.6	39.2
	1999	42.7	23.9	35.6	30.2	41.4	29.3	34.9	44.6	40.1	40.4	38.8	44.9	41.7	33.7	46.3	29.2
	2000	39.5	29.2	38.7	28.6	41.1	28.8	26.7	40.7	33.5	34.8	39.6	47.7	39.3	33.0	42.0	32.6
	2001	36.0	21.6	34.3	30.3	43.2	33.8	18.3	37.2	31.4	26.7	36.0	43.7	33.0	26.3	36.7	36.8
2002	35.2	23.2	30.6	26.0	42.4	29.9	40.0	36.0	32.5	28.5	36.3	38.5	36.4	29.6	38.8	35.6	
2003	34.5	30.8	31.5	26.9	42.8	27.5	26.0	36.0	30.9	29.6	32.0	38.1	30.0	25.3	40.6	32.2	
18-19 YEARS OLD	1992	142.6	150.3	154.4	76.9	223.9	97.1	146.1	146.7	164.5	179.9	104.3	190.1	164.2	118.7	153.3	119.1
	1993	142.8	136.6	130.2	130.9	154.6	166.7	117.2	163.7	166.4	161.3	152.6	188.7	153.3	95.2	172.0	133.3
	1994	145.9	132.1	113.4	125.5	149.4	108.7	90.9	167.1	161.5	152.6	155.8	165.3	147.7	129.5	184.8	118.5
	1995	141.8	113.4	106.5	106.3	133.3	96.3	229.6	157.4	193.9	150.2	134.1	167.1	150.2	135.2	179.6	146.7
	1996	141.6	107.2	114.8	112.7	143.8	131.8	189.4	146.8	146.8	130.3	134.6	147.6	135.7	120.1	157.1	91.4
	1997	139.3	98.8	155.6	91.8	154.5	120.4	192.6	143.0	156.3	124.5	133.3	152.1	122.6	103.5	168.4	144.9
	1998	142.1	105.7	115.5	77.6	130.5	111.1	94.0	148.0	139.1	138.0	123.8	159.9	136.9	111.7	156.6	135.7
	1999	137.6	88.3	115.5	78.9	121.0	94.8	116.1	146.5	139.4	141.7	118.3	145.9	145.2	114.8	151.7	72.7
	2000	135.8	109.9	124.5	74.7	167.3	74.1	123.8	127.8	139.7	154.1	104.7	161.0	132.1	124.9	149.8	127.1
	2001	113.2	91.9	116.8	84.3	154.3	84.9	78.4	117.3	132.5	111.7	96.6	156.9	113.7	91.8	130.8	153.0
2002	111.1	100.7	104.4	68.9	151.5	78.4	161.9	114.2	131.5	121.5	96.7	130.2	137.7	115.9	133.4	127.0	
2003	108.2	130.1	107.3	70.6	145.5	78.8	64.8	112.4	129.0	123.4	86.0	139.3	130.7	98.7	134.2	113.4	
10-17 YEARS OLD	1992	24.1	15.7	16.5	19.2	23.6	13.8	13.3	26.8	18.6	18.3	20.9	30.6	16.0	19.1	25.0	24.6
	1993	23.5	18.2	23.4	21.0	26.4	17.6	23.7	24.4	21.7	19.2	22.1	28.9	22.2	13.4	27.8	14.6
	1994	24.2	17.7	21.0	16.8	24.6	16.9	22.6	25.7	20.4	18.4	24.9	33.6	23.1	15.6	25.4	25.3
	1995	23.6	13.9	20.3	20.6	19.5	13.8	15.2	24.5	15.5	19.2	23.7	26.6	21.1	15.8	26.6	22.8
	1996	23.0	12.7	19.7	18.9	20.1	16.9	26.8	24.0	22.1	16.9	21.8	27.2	21.7	15.8	26.8	15.5
	1997	22.0	15.7	19.2	14.1	30.4	22.5	16.5	22.4	18.5	18.3	20.4	24.7	23.8	16.2	23.5	21.6
	1998	22.7	13.7	16.9	12.8	24.8	19.4	31.9	23.0	18.1	20.9	22.0	25.6	26.4	19.2	22.9	13.0
	1999	19.9	9.6	15.8	15.1	22.1	13.7	16.3	21.0	17.4	17.9	17.6	22.3	17.1	13.8	20.9	18.6
	2000	18.4	15.0	19.1	14.6	17.6	13.9	8.8	18.9	12.0	13.7	19.1	23.8	21.8	13.3	17.5	15.2
	2001	16.5	9.2	15.5	13.9	22.5	17.0	7.2	17.2	10.9	11.7	16.9	19.8	17.8	12.3	15.3	15.2
2002	16.1	9.6	13.7	13.0	22.1	14.0	17.5	16.5	12.5	12.0	17.2	19.1	17.2	11.1	17.3	18.7	
2003	15.9	13.4	14.3	13.6	23.7	10.7	18.8	16.9	11.1	13.0	14.6	16.8	11.1	9.5	19.3	17.2	

* Number of pregnancies per 1,000 females in specified group.

**TABLE 10A
PREGNANCIES AND PREGNANCY RATES, FEMALES 19 OR YOUNGER
BY COUNTY OF RESIDENCE, ARIZONA, 2003**

County of residence	NUMBER OF PREGNANCIES:*				
	All 19 years or younger	10-14 years	15-19 years		
			Total	15-17 years	18-19 years
Apache	238	5	233	83	150
Cochise	296	4	292	105	187
Coconino	286	6	280	105	175
Gila	163	4	159	72	87
Graham	89	1	88	25	63
Greenlee	18	1	17	10	7
Maricopa	8,360	175	8,185	2,960	5,225
Mohave	321	2	319	94	225
Navajo	307	7	300	108	192
Pima	2,067	39	2,028	678	1,350
Pinal	503	10	493	173	320
Santa Cruz	113	2	111	33	78
Yavapai	284	4	280	84	196
Yuma	543	10	533	200	333
La Paz	40	2	38	16	22
TOTAL STATE**	26	0	26	9	17
	13,654	272	13,382	4,755	8,627

County of residence	PREGNANCY RATES:***				
	All 19 years or younger	10-14 years	15-19 years		
			Total	15-17 years	18-19 years
Apache	30.8	1.2	69.1	37.4	130.1
Cochise	31.5	0.8	63.8	37.1	107.3
Coconino	26.9	1.2	49.3	32.7	70.6
Gila	42.8	1.9	92.8	64.6	145.5
Graham	27.5	0.6	53.6	29.7	78.8
Greenlee	26.0	2.8	51.4	44.8	64.8
Maricopa	36.0	1.5	72.1	44.2	112.4
Mohave	30.9	0.4	65.5	30.1	129.0
Navajo	29.6	1.2	64.3	34.7	123.4
Pima	32.0	1.2	60.7	37.9	86.0
Pinal	38.1	1.4	78.9	43.8	139.3
Santa Cruz	30.0	1.0	65.8	30.3	130.7
Yavapai	25.3	0.7	50.9	23.9	98.7
Yuma	40.6	1.4	84.1	51.9	134.2
La Paz	32.2	3.1	63.9	39.9	113.4
TOTAL STATE	34.5	1.3	68.9	41.6	108.2

* The sum of live births, fetal deaths and abortions.

** Includes records with unknown county of residence.

*** The number of pregnancies per 1,000 females in specified group.

**TABLE 10B
BIRTHS AND BIRTH RATES, FEMALES 19 OR YOUNGER
BY COUNTY OF RESIDENCE, ARIZONA, 2003**

County of residence	NUMBER OF BIRTHS:				
	All 19 years or younger	10-14 years	15-19 years		
			Total	15-17 years	18-19 years
Apache	231	4	227	82	145
Cochise	266	4	262	94	168
Coconino	242	5	237	93	144
Gila	156	4	152	69	83
Graham	81	0	81	22	59
Greenlee	17	1	16	9	7
Maricopa	6,968	124	6,844	2,485	4,359
Mohave	320	2	318	94	224
Navajo	295	7	288	102	186
Pima	1,732	34	1,698	581	1,117
Pinal	488	10	478	167	311
Santa Cruz	103	2	101	32	69
Yavapai	263	4	259	77	182
Yuma	498	9	489	187	302
La Paz	38	1	37	16	21
Unknown	2	0	2	0	2
TOTAL STATE*	11,700	211	11,489	4,110	7,379

County of residence	BIRTH RATES:**				
	All 19 years or younger	10-14 years	15-19 years		
			Total	15-17 years	18-19 years
Apache	29.9	0.9	67.4	37.0	125.8
Cochise	28.3	0.8	57.2	33.2	96.4
Coconino	22.8	1.0	41.7	29.0	58.1
Gila	41.0	1.9	88.7	61.9	138.8
Graham	25.1	0.0	49.3	26.1	73.8
Greenlee	24.5	2.8	48.3	40.4	64.8
Maricopa	30.0	1.0	60.3	37.1	93.7
Mohave	30.8	0.4	65.3	30.1	128.4
Navajo	28.4	1.2	61.7	32.8	119.5
Pima	26.8	1.1	50.8	32.5	71.9
Pinal	37.0	1.4	76.5	42.2	135.3
Santa Cruz	27.4	1.0	59.9	29.4	115.6
Yavapai	23.4	0.7	47.1	21.9	91.6
Yuma	37.2	1.3	77.2	48.5	121.7
La Paz	30.6	1.5	62.2	39.9	108.2
TOTAL STATE	29.5	1.0	59.2	35.9	92.5

* Includes records with unknown county of residence.
 ** The number of births per 1,000 females in specified group.

**TABLE 11
PREGNANCY RATES¹ AND NUMBER OF LIVE BIRTHS,
FETAL DEATHS AND ABORTIONS TO TEENS BY INDIVIDUAL AGE,
ARIZONA, 2003**

		PREGNANCIES BY OUTCOME			TOTAL PREGNANCIES	
Age	Population	Live Births	Induced termination of pregnancy (or abortions)	Spontaneous fetal losses	Number	Rate
10	42,540	0	1	0	1	0.0
11	40,399	1	0	0	1	0.0
12	39,979	3	4	0	7	0.2
13	39,686	26	13	0	39	1.0
14	39,389	181	42	1	224	5.7
10-14	201,993	211	60	1	272	1.4
15	38,611	587	128	5	720	18.7
16	37,444	1,314	190	16	1,520	40.6
17	38,313	2,209	296	10	2,515	65.6
15-17	114,368	4,110	614	31	4,755	41.6
18	39,401	3,211	554	26	3,791	96.2
19	40,358	4,168	639	29	4,836	119.8
18-19	79,759	7,379	1,193	55	8,627	108.2
Total 10-19	396,120	11,700	1,867	87	13,654	34.5

1 Rates per 1,000 female population in specific group.

2 Quantity less than 0.05.

**TABLE 12
BIRTHS TO FEMALES 19 OR YOUNGER BY AGE AND COUNTY OF RESIDENCE,
ARIZONA, 2003**

County of residence	Total	Age									
		10	11	12	13	14	15	16	17	18	19
TOTAL STATE	11,700	0	1	3	26	181	587	1,314	2,209	3,211	4,168
Apache	231	0	0	0	1	3	9	29	44	63	82
Cochise	266	0	0	0	0	4	14	30	50	79	89
Coconino	242	0	0	0	1	4	12	23	58	75	69
Gila	156	0	0	0	1	3	7	17	45	37	46
Graham	81	0	0	0	0	0	5	6	11	23	36
Greenlee	17	0	0	0	0	1	1	2	6	1	6
Maricopa	6,968	0	1	2	14	107	359	807	1,319	1,881	2,478
Mohave	320	0	0	0	0	2	13	32	49	91	133
Navajo	295	0	0	0	1	6	17	27	58	82	104
Pima	1,732	0	0	1	5	28	70	186	325	485	632
Pinal	488	0	0	0	0	10	33	56	78	136	175
Santa Cruz	103	0	0	0	0	2	2	14	16	34	35
Yavapai	263	0	0	0	1	3	16	21	40	74	108
Yuma	498	0	0	0	1	8	26	61	100	142	160
La Paz	38	0	0	0	1	0	3	3	10	7	14
Unknown	2	0	0	0	0	0	0	0	0	1	1

TABLE 13
ABORTIONS TO FEMALES 19 OR YOUNGER BY AGE AND COUNTY OF RESIDENCE,
ARIZONA, 2003

County of residence	Total	Age									
		10	11	12	13	14	15	16	17	18	19
TOTAL STATE	1,867	1	0	4	13	42	128	190	296	554	639
Apache	5	0	0	0	0	1	0	0	1	0	3
Cochise	29	0	0	0	0	0	4	3	3	7	12
Coconino	44	0	0	0	0	1	4	2	6	10	21
Gila	7	0	0	0	0	0	1	1	1	3	1
Graham	5	0	0	0	0	1	0	0	0	1	3
Greenlee	1	0	0	0	0	0	0	0	1	0	0
Maricopa	1,344	1	0	4	12	33	90	148	223	397	436
Mohave	0	0	0	0	0	0	0	0	0	0	0
Navajo	11	0	0	0	0	0	1	1	3	5	1
Pima	320	0	0	0	1	4	23	25	42	103	122
Pinal	11	0	0	0	0	0	0	1	3	3	4
Santa Cruz	9	0	0	0	0	0	0	1	0	4	4
Yavapai	19	0	0	0	0	0	2	1	3	5	8
Yuma	37	0	0	0	0	1	1	6	4	10	15
La Paz	1	0	0	0	0	1	0	0	0	0	0
Unknown	24	0	0	0	0	0	2	1	6	6	9

TABLE 14
SOURCES OF PAYMENT FOR LABOR AND DELIVERY, FEMALES 19 OR YOUNGER
BY COUNTY OF RESIDENCE, ARIZONA, 2003

County of residence	Total	Payee for Birth				
		AHCCCS	IHS	Private Insurance	Self	Unknown
TOTAL STATE	11,700	9,292	324	1,676	217	191
Apache	231	135	54	7	0	35
Cochise	266	202	1	59	3	1
Coconino	242	156	59	21	3	3
Gila	156	95	45	15	1	0
Graham	81	56	18	7	0	0
Greenlee	17	12	0	4	0	1
Maricopa	6,968	5,640	45	1,111	111	61
Mohave	320	255	4	26	3	32
Navajo	295	197	61	27	2	8
Pima	1,732	1,434	28	228	13	29
Pinal	488	362	6	91	24	5
Santa Cruz	103	86	0	5	12	0
Yavapai	263	230	2	22	7	2
Yuma	498	406	1	50	38	3
La Paz	38	26	0	3	0	9
Unknown	2	0	0	0	0	2

**TABLE 15
SOURCES OF PAYMENT FOR LABOR AND DELIVERY, FEMALES 19 OR YOUNGER
BY AGE GROUP, ARIZONA, 2003**

			Total	Mother's Age Group		
				<15	15-17	18-19
Total			11,700	211	4,110	7,379
Payee for birth	AHCCCS	Count	9,292	180	3,238	5,874
		Percent	79.4%	85.3%	78.8%	79.6%
	IHS	Count	324	11	133	180
		Percent	2.8%	5.2%	3.2%	2.4%
	Private Insurance	Count	1,676	14	587	1,075
		Percent	14.3%	6.6%	14.3%	14.6%
	Self	Count	217	3	88	126
		Percent	1.9%	1.4%	2.1%	1.7%
	Unknown	Count	191	3	64	124
		Percent	1.6%	1.4%	1.6%	1.7%

**TABLE 16
TEENAGE BIRTHS BY NUMBER OF PREVIOUS PREGNANCIES BY AGE GROUP,
ARIZONA, 2003**

			Total	Mother's Age Group		
				<15	15-17	18-19
Total			11,700	211	4,110	7,379
Total prior pregnancies	None	Count	8,430	205	3,424	4,801
		Percent	72.1%	97.2%	83.3%	65.1%
	1	Count	2,485	6	589	1,890
		Percent	21.2%	2.8%	14.3%	25.6%
	2	Count	607	0	78	529
		Percent	5.2%	0.0%	1.9%	7.2%
	3	Count	127	0	9	118
		Percent	1.1%	0.0%	0.2%	1.6%
	4 or more	Count	29	0	3	26
		Percent	0.2%	0.0%	0.1%	0.4%
	Unknown	Count	22	0	7	15
		Percent	0.2%	0.0%	0.2%	0.2%

**TABLE 17
TEENAGE BIRTHS BY MARITAL STATUS AND AGE GROUP, ARIZONA, 2003**

			Total	Mother's Age Group		
				<15	15-17	18-19
Total			11,700	211	4,110	7,379
Marital status	Married	Count	1,963	1	364	1,598
		Percent	16.8%	0.5%	8.9%	21.7%
	Unmarried	Count	9,714	210	3,744	5,760
		Percent	83.0%	99.5%	91.1%	78.1%
	Other	Count	23	0	2	21
		Percent	0.2%	0.0%	0.0%	0.3%

* "Refused", "Yes, divorced", "Other or Unknown"

**TABLE 18
TEENAGE BIRTHS BY MOTHER'S EDUCATION AND AGE GROUP, ARIZONA, 2003**

			Total	Mother's Age Group		
				<15	15-17	18-19
Total			11,700	211	4,110	7,379
Mother's education	<8	Count	623	58	195	370
		Percent	5.3%	27.5%	4.7%	5.0%
	8	Count	834	98	391	345
		Percent	7.1%	46.4%	9.5%	4.7%
	9-11	Count	6,041	50	2,962	3,029
		Percent	51.6%	23.7%	72.1%	41.0%
	12	Count	3,367	0	461	2,906
		Percent	28.8%	0.0%	11.2%	39.4%
	13-16	Count	635	0	28	607
		Percent	5.4%	0.0%	0.7%	8.2%
	17+	Count	1	0	0	1
		Percent	0.0%	0.0%	0.0%	0.0%
	Unknown	Count	199	5	73	121
		Percent	1.7%	2.4%	1.8%	1.6%

TABLE 19
TEENAGE BIRTHS BY TRIMESTER OF ENTRY INTO PRENATAL CARE
AND AGE GROUP, ARIZONA, 2003

		Total	Mother's Age Group		
			<15	15-17	18-19
Total		11,700	211	4,110	7,379
No care	Count	507	18	209	280
	Percent	4.3%	8.5%	5.1%	3.8%
1st trimester	Count	7,212	101	2,374	4,737
	Percent	61.6%	47.9%	57.8%	64.2%
2nd trimester	Count	2,964	67	1,146	1,751
	Percent	25.3%	31.8%	27.9%	23.7%
3rd trimester	Count	809	22	309	478
	Percent	6.9%	10.4%	7.5%	6.5%
Unknown	Count	208	3	72	133
	Percent	1.8%	1.4%	1.8%	1.8%

**TABLE 20
TEENAGE BIRTHS BY NUMBER OF PRENATAL VISITS AND AGE GROUP,
ARIZONA, 2003**

			Total	Mother's Age Group		
				<15	15-17	18-19
Total			11,700	211	4,110	7,379
Number of prenatal visits	No visits	Count	507	18	209	280
		Percent	4.3%	8.5%	5.1%	3.8%
	1-4 visits	Count	793	20	275	498
		Percent	6.8%	9.5%	6.7%	6.7%
	5-8 visits	Count	2,564	50	976	1,538
		Percent	21.9%	23.7%	23.7%	20.8%
	9-12 visits	Count	4,683	73	1,611	2,999
		Percent	40.0%	34.6%	39.2%	40.6%
	13+ visits	Count	2,865	44	932	1,889
		Percent	24.5%	20.9%	22.7%	25.6%
	Unknown	Count	288	6	107	175
		Percent	2.5%	2.8%	2.6%	2.4%

**TABLE 21
TOBACCO AND/OR ALCOHOL USE DURING PREGNANCY AMONG FEMALES
19 OR YOUNGER BY AGE GROUP, ARIZONA, 2003**

			Total	Mother's Age Group		
				<15	15-17	18-19
Total			11,700	211	4,110	7,379
Substance use	Drinker, nonsmoker	Count	25	1	10	14
		Percent	0.2%	0.5%	0.2%	0.2%
	Smoker, nondrinker	Count	702	1	183	518
		Percent	6.0%	0.5%	4.5%	7.0%
	Smoker and drinker	Count	39	0	15	24
		Percent	0.3%	0.0%	0.4%	0.3%
	Nonsmoker nondrinker	Count	10,934	209	3,902	6,823
		Percent	93.5%	99.1%	94.9%	92.5%

**TABLE 22
RISK FOR LOW-BIRTHWEIGHT (LBW) BIRTHS BY SELECTED CHARACTERISTICS OF
FEMALES 19 OR YOUNGER, ARIZONA, 2003**

	Mother's Age Group												
	<15					15-17					18-19		
	Total births		LBW births		Total births	LBW births		Total births	LBW births		Total births	LBW births	
	Count	Percent	Count	Percent	Count	Count	Percent	Count	Count	Percent	Count	Count	Percent
Race/ethnicity	White non Hispanic	23	8.7%	2	8.7%	782	71	9.1%	2,165	180	8.3%		
	Hispanic or Latino	146	14.4%	21	14.4%	2,600	208	8.0%	4,046	337	8.3%		
	Black or African American	3	33.3%	1	33.3%	204	26	12.7%	342	33	9.6%		
	American Indian or Alaska Native	37	16.2%	6	16.2%	434	21	4.8%	670	34	5.1%		
	Asian or Pacific Islander	1	0.0%	0	0.0%	38	1	2.6%	68	2	2.9%		
Substance use	Unknown	1	0.0%	0	0.0%	52	4	7.7%	88	12	13.6%		
	Drinker, nonsmoker	1	0.0%	0	0.0%	10	1	10.0%	14	0	0.0%		
	Smoker, nondrinker	1	0.0%	0	0.0%	183	23	12.6%	518	57	11.0%		
	Smoker and drinker	0	0.0%	0	0.0%	15	1	6.7%	24	4	16.7%		
	Nonsmoker and nondrinker	209	14.4%	30	14.4%	3,902	306	7.8%	6,823	537	7.9%		
Payee for birth	AHCCCS	180	16.1%	29	16.1%	3,238	266	8.2%	5,874	483	8.2%		
	IHS	11	0.0%	0	0.0%	133	3	2.3%	180	8	4.4%		
	Private Insurance	14	0.0%	0	0.0%	587	45	7.7%	1,075	77	7.2%		
	Self	3	0.0%	0	0.0%	88	10	11.4%	126	17	13.5%		
	Unknown	3	33.3%	1	33.3%	64	7	10.9%	124	13	10.5%		
Length of gestation	Preterm (36 weeks or less)	61	42.6%	26	42.6%	793	249	31.4%	1,449	472	32.6%		
	Term (37 weeks or more)	147	2.0%	3	2.0%	3,301	79	2.4%	5,903	122	2.1%		
	Unknown	3	33.3%	1	33.3%	16	3	18.8%	27	4	14.8%		
Prenatal visits	<5 visits	38	26.3%	10	26.3%	484	73	15.1%	778	108	13.9%		
	5 or more visits	167	12.0%	20	12.0%	3,519	248	7.0%	6,426	468	7.3%		
	Unknown	6	0.0%	0	0.0%	107	10	9.3%	175	22	12.6%		

Low birthweight: Any neonate weighing less than 2,500 grams (less than 5 pounds 8 ounces).

**TABLE 23
LIVE BIRTHS TO FEMALES 19 OR YOUNGER AS PERCENTAGE OF TOTAL
LIVE BIRTHS BY AREA, ETHNIC GROUP AND YEAR, ARIZONA, 1993-2003**

Group	1993	1994	1995	1996	1997	1998	1999	2000	2001	2002	2003
ARIZONA TOTAL¹											
# Births (all ages)	69,03	70,89	72,38	75,09	75,56	77,94	80,50	84,98	85,21	87,37	90,87
# Births to Teenagers	7	6	6	4	3	0	5	5	3	9	3
% Births to Teenagers	10,43	10,85	10,97	11,24	11,08	11,69	11,96	12,18	11,79	11,47	11,70
	8	8	3	7	5	5	3	9	0	4	0
	15.1	15.2	15.2	15.0	14.7	15.0	14.9	14.3	13.8	13.1	12.9
URBAN COUNTIES²											
# Births (all ages)	54,62	58,73	60,29	62,87	63,51	65,82	68,61	72,59	73,31	74,85	77,90
# Births to Teenagers	7	3	3	9	0	5	1	6	9	1	5
% Births to Teenagers	7,887	8,862	8,956	9,234	9,076	9,605	9,896	10,10	9,906	9,512	9,686
	14.4	15.1	14.9	14.7	14.3	14.6	14.4	2	13.5	10.4	12.4
								13.9			
RURAL COUNTIES											
# Births (all ages)	14,41	12,16	12,09	12,21	12,05	12,11	11,87	12,33	11,85	12,49	12,84
# Births to Teenagers	0	3	3	5	3	5	7	3	1	8	8
% Births to Teenagers	2,551	1,996	2,017	2,009	2,009	2,090	2,067	2,083	1,882	1,959	2,014
	17.7	16.4	16.7	16.4	16.7	17.3	17.4	16.9	15.9	19.6	15.7
WHITE NON-HISPANIC											
# Births (all ages)	37,38	37,78	38,48	38,49	37,86	38,61	38,71	39,85	38,93	38,81	38,84
# Births to Teenagers	1	0	8	4	9	1	1	0	4	9	2
% Births to Teenagers	4,024	4,023	4,042	4,033	3,733	3,843	3,869	3,759	3,3,96	3,064	2,970
	10.8	10.6	10.5	10.5	9.9	10.0	10.0	9.4	8.7	7.9	7.6
HISPANIC OR LATINO											
# Births (all ages)	22,24	23,72	25,14	27,39	27,94	28,82	30,78	33,89	35,10	36,08	39,10
# Births to Teenagers	7	4	1	6	1	4	4	3	3	9	1
% Births to Teenagers	4,688	5,075	5,351	5,628	5,736	5,951	6,161	6,548	6,648	6,585	6,792
	21.1	21.4	21.3	20.5	20.5	20.6	20.0	19.3	18.9	18.2	17.4
BLACK OR AFRICAN AMERICAN											
# Births (all ages)	2,402	2,477	2,233	2,336	2,485	2,629	2,699	2,760	2,736	2,753	3,022
# Births to Teenagers	581	576	491	498	519	586	603	572	545	468	549
% Births to Teenagers	24.2	23.3	22.0	21.3	20.9	22.3	22.3	20.7	19.9	17.0	18.2
AMERICAN INDIAN OR ALASKA NATIVE											
# Births (all ages)	5,781	5,513	5,086	5,328	5,271	5,460	5,295	5,602	5,340	5,545	5,881
# Births to Teenagers	1,060	1,095	991	996	971	1,122	1,050	1,089	1,013	1,039	1,141
% Births to Teenagers	18.3	19.9	19.5	18.6	18.4	20.6	19.8	19.4	19.0	19.0	19.4
ASIAN OR PACIFIC ISLANDER											
# Births (all ages)	1,162	1,271	1,342	1,427	1,602	1,747	1,875	2,041	2,104	2,281	2,524
# Births to Teenagers	79	72	85	76	66	73	92	100	104	96	107
% Births to Teenagers	6.8	5.7	6.3	5.3	4.1	4.2	4.9	4.9	4.9	4.2	4.2

¹ Includes records for ethnic groups other than White, Hispanic, Black, American Indian or Asian.

² Urban = Maricopa, Pima, Pinal, and Yuma. The remaining counties comprise Arizona's rural areas.

**TABLE 24
BIRTH RATES BY AGE GROUP FOR FEMALES 19 OR YOUNGER,
ARIZONA AND UNITED STATES, 1993-2003**

Year	Under 15 Years		15 - 19 Years Old					
	AZ	U.S.	Total		15-17 Years		18-19 Years	
			AZ	U.S.	AZ	U.S.	AZ	U.S.
1993	1.3	1.4	82.1	59.6	51.2	37.8	116.4	92.1
1994	1.7	1.4	82.8	58.9	53.0	37.6	118.5	91.5
1995	1.6	1.3	79.1	56.8	50.1	36.0	117.1	89.1
1996	1.4	1.2	76.1	54.4	49.0	33.8	119.0	86.0
1997	1.4	1.1	72.8	52.3	46.1	32.1	114.9	83.6
1998	1.4	1.0	73.9	51.1	47.0	30.4	114.9	82.0
1999	1.4	0.9	72.9	49.6	43.7	28.7	117.1	80.3
2000	1.2	0.9	67.6	48.5	41.1	27.4	105.7	78.1
2001	1.0	0.8	63.3	45.3	37.8	24.7	99.9	76.1
2002	1.0	0.7	59.7	42.9	35.5	23.2	94.3	72.7
2003	1.0	NA	59.2	NA	35.9	NA	92.5	NA

Note: the U.S. data are from the National vital statistics reports published by the National Center for Health Statistics.

**TABLE 25
REPEAT PREGNANCIES AMONG TEENAGE MOTHERS GIVING BIRTH BY AGE AND YEAR,
ARIZONA, 1993-2003**

MOTHER'S AGE		YEAR OF BIRTH											
		1993	1994	1995	1996	1997	1998	1999	2000	2001	2002	2003	
11	Total	0	1	0	1	1	1	0	0	0	1	1	
	Previous pregnancies	0	1	0	1	1	0	0	0	0	1	1	
12	One or more	0	0	0	0	0	0	0	0	0	0	0	
	Total	2	3	6	3	4	5	2	4	3	5	3	
13	Previous pregnancies	2	3	6	3	4	4	2	4	3	5	3	
	One or more	0	0	0	0	0	1	0	0	0	0	0	
14	Total	27	45	32	34	33	34	36	37	28	22	26	
	Previous pregnancies	26	43	31	32	33	33	36	35	28	21	25	
15	One or more	1	2	1	2	0	1	0	2	0	0	1	
	Unknown	0	0	0	0	0	0	0	0	0	1	0	
16	Total	158	197	191	178	176	195	200	175	167	178	181	
	Previous pregnancies	152	188	181	174	165	186	189	172	157	167	176	
17	One or more	6	9	10	4	11	9	11	3	10	11	5	
	Total	555	664	649	658	598	651	595	647	620	512	587	
18	Previous pregnancies	512	601	588	613	553	597	559	604	569	470	551	
	One or more	43	63	61	45	41	51	35	36	49	41	36	
19	Unknown	0	0	0	0	4	3	1	3	2	1	0	
	Total	1,303	1,315	1,337	1,434	1,363	1,443	1,388	1,376	1,353	1,336	1,314	
20	Previous pregnancies	1,121	1,126	1,175	1,239	1,175	1,261	1,207	1,205	1,171	1,169	1,144	
	One or more	182	189	162	195	182	175	177	163	176	166	168	
21	Unknown	0	0	0	0	6	7	4	8	6	1	2	
	Total	2,012	2,153	2,192	2,248	2,258	2,303	2,253	2,261	2,107	2,104	2,209	
22	Previous pregnancies	1,507	1,669	1,710	1,778	1,729	1,831	1,772	1,806	1,634	1,658	1,729	
	One or more	505	484	482	470	516	463	475	447	464	437	475	
23	Unknown	0	0	0	0	13	9	6	8	9	9	5	
	Total	2,862	2,865	3,005	2,926	2,902	3,153	3,300	3,338	3,168	3,208	3,211	
24	Previous pregnancies	1,864	1,911	2,050	2,032	1,951	2,138	2,247	2,313	2,161	2,231	2,209	
	One or more	998	954	955	894	939	1,002	1,041	1,014	988	967	996	
25	Unknown	0	0	0	0	12	13	12	11	19	10	6	
	Total	3,519	3,615	3,561	3,765	3,750	3,911	4,189	4,351	4,344	4,108	4,168	
26	Previous pregnancies	1,983	2,117	2,149	2,194	2,180	2,284	2,485	2,627	2,597	2,496	2,592	
	One or more	1,536	1,498	1,412	1,571	1,554	1,606	1,680	1,706	1,735	1,595	1,567	
27	Unknown	0	0	0	0	16	21	24	18	12	17	9	

**TABLE 26
CUMULATIVE NUMBER OF MOTHERS WHO WERE 19 OR YOUNGER IN ARIZONA IN 2003**

Year Baby Was Born	MOTHER'S AGE WHEN BABY WAS BORN										Mother was 19 or younger in 2003
	10	11	12	13	14	15	16	17	18	19	
1994	0										0
1995	0	0									0
1996	0	1	3								4
1997	0	1	4	33							38
1998	0	0	5	34	195						234
1999	0	0	2	36	200	595					833
2000	0	0	4	37	175	647	1,376				2,239
2001	0	0	3	28	167	620	1,352	2,107			4,277
2002	0	1	5	22	178	512	1,336	2,104	3,208		7,366
2003	0	1	3	26	181	587	1,314	2,209	3,211	4,168	11,700
Cumulative number of mothers 19 or younger	0	4	29	216	1,096	2,961	5,378	6,420	6,419	4,168	26,691

NOTE: The above table focuses on the 2003 cohort of Arizona mothers who were 19 or younger that year. Among them are those who:

- gave birth to the 11,700 babies in 2003;
- gave birth to a baby prior to 2003 and were still 19 or less years old in 2003.

The numbers below the main diagonal (and below the stair-like line) represent the number of mothers meeting either one of the above criteria. The last column to the right gives the cumulative total for 2003 by the year baby was born. For example, from among those girls and adolescents who had their baby in 1997, 38 remained in their teens in 2003. The bottom row gives the cumulative total by mother's age when baby was born. For example, among the 26,691 mothers under 20 in Arizona in 2003, 1,096 had given birth when 14 years old.

Excluded from the cumulative totals and not shown above the main diagonal (and above stair-like line) are the numbers of mothers who were 19 years old when the baby was born, but who were no longer under the age 20 by 2003. For example, mothers who were 11 years old in 1994 were 20 years old in 2003.

The figures in Table 26 are unadjusted for in-and-out migration, as well as mortality of mothers, in the period of 1993-2003.

**TABLE 27
POPULATION OF FEMALES 19 OR YOUNGER, NUMBER OF PREGNANCIES AND
PREGNANCY RATES BY AGE GROUP AND RACE/ETHNICITY, ARIZONA, 2003**

	POPULATION*				
	All 19 years or younger	10-14 years	15-19 years, total	15-19 years	
				15-17	18-19
White Non-Hispanic	214,054	107,547	106,507	62,461	44,046
Hispanic or Latino	130,022	67,197	62,825	36,867	25,958
Black or African American	14,627	7,728	6,899	4,133	2,766
American Indian or Alaska Native	30,422	16,245	14,177	8,858	5,319
Asian or Pacific Islander	6,995	3,276	3,719	2,049	1,670
ALL GROUPS	396,120	201,993	194,127	114,368	79,759

	NUMBER OF PREGNANCIES				
	All 19 years or younger	10-14 years	15-19 years, total	15-19 years	
				15-17	18-19
White Non-Hispanic	3,903	41	3,862	1,090	2,772
Hispanic or Latino	7,476	174	7,302	2,819	4,483
Black or African American	664	9	655	247	408
American Indian or Alaska Native	1,215	40	1,175	461	714
Asian or Pacific Islander	134	2	132	45	87
ALL GROUPS	262	6	256	93	163
	13,654	272	13,382	4,755	8,627

	PREGNANCY RATES**				
	All 19 years or younger	10-14 years	15-19 years, total	15-19 years	
				15-17	18-19
White non-Hispanic	18.2	0.4	36.3	17.5	62.9
Hispanic or Latino	57.5	2.6	116.2	76.5	172.7
Black or African American	45.4	1.2	94.9	59.8	147.5
American Indian or Alaska Native	39.9	2.5	82.9	52.0	134.2
Asian or Pacific Islander	19.2	0.2	35.5	22.0	52.1
ALL GROUPS	34.5	0.0	1.3	41.6	108.2

*In order to obtain the 2003 population denominators, the 2000 percentages of population breakdowns (or census shares) by age group and gender were applied to total state and county population estimates for 2003 released by the Department of Economic Security on 12/11/03. The total for all groups includes racial/ethnic groups other than White non-Hispanic, Hispanic, Black, American Indian and Asian.

**Number of pregnancies per 1,000 females in specified group.

TABLE 28
POPULATION OF FEMALES 19 OR YOUNGER BY COUNTY OF RESIDENCE,
ARIZONA, 2003

County of residence	All 19 years or younger	10-14 years	15-19 years, total	15-19 years	
				15-17 years	18-19 years
Apache	7,717	4,347	3,370	2,217	1,153
Cochise	9,389	4,812	4,577	2,834	1,743
Coconino	10,637	4,953	5,684	3,207	2,477
Gila	3,804	2,091	1,713	1,115	598
Graham	3,231	1,589	1,642	843	799
Greenlee	693	362	331	223	108
Maricopa	232,378	118,876	113,502	67,003	46,499
Mohave	10,386	5,519	4,867	3,123	1,744
Navajo	10,370	5,702	4,668	3,112	1,556
Pima	64,681	31,276	33,405	17,879	15,526
Pinal	13,205	6,953	6,252	3,954	2,298
Santa Cruz	3,761	2,074	1,687	1,090	597
Yavapai	11,245	5,745	5,500	3,514	1,986
Yuma	13,382	7,048	6,334	3,853	2,481
La Paz	1,241	646	595	401	194
TOTAL STATE	396,120	201,993	194,127	114,368	79,759

NOTE: In order to obtain the 2003 population denominators, the 2000 percentages of population breakdowns (or census shares) by age group and gender were applied to total state and county population estimates for 2003 released by the Department of Economic Security on 12/11/03.

Our Web site at <http://www.azdhs.gov/plan> provides instantaneous access to a wide range of statistical information about health status of Arizonans. The [Arizona Health Status and Vital Statistics](#) annual report examines trends in natality, mortality and morbidity towards established health objectives. Additional reports and studies include *Differences in Health Status by Ethnic Group*, *Advance Vital Statistics by County of Residence*, *Mortality from Alzheimer's Disease*, *Injury Mortality among Arizona Residents* (accidents, suicides, homicides, legal intervention, firearm-related fatalities, drug-related deaths, drowning deaths), *Community Vital Statistics*, *Teenage Pregnancy*, *Selected Characteristics of Newborns and Mothers Giving Birth by Census Tract* in Maricopa County, Pima County and South Phoenix Area, *Health Status Profile of American Indians in Arizona* and *Deaths from Exposure to Excessive Natural Heat Occurring in Arizona*.



**Health Status and Vital Statistics Section
Bureau of Public Health Statistics
Public Health Services
ARIZONA DEPARTMENT OF HEALTH SERVICES**
