

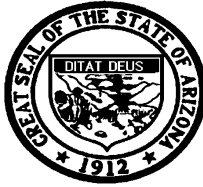
TEENAGE PREGNANCY

Arizona, 1996-2006



**Bureau of Public Health Statistics
Health Status and Vital Statistics Section**

~ Leadership for a Healthy Arizona ~



Janet Napolitano, Governor
State of Arizona

Susan Gerard, Director
Arizona Department of Health Services

Health Status and Vital Statistics Section
BUREAU OF PUBLIC HEALTH STATISTICS
ARIZONA DEPARTMENT OF HEALTH SERVICES

150 North 18th Avenue, Suite 550

Phoenix, Arizona 85007

Phone: 602/542-7333; FAX: 602/542-2940

www.azdhs.gov/plan

This publication can be made available in alternative format.
Please contact the Bureau of Public Health Statistics
at 602/542-7333 (voice) or call 1-800-367-8939 (TDD).

The Arizona Department of Health Services is
an Equal Employment Opportunity Agency.

Permission to quote from or reproduce materials from this
publication is granted when due acknowledgment is made.

TEENAGE PREGNANCY, ARIZONA, 1996-2006

by

Christopher K. Mrela, Ph.D., *Arizona Vital Statistician*
Clare Torres, *Senior Health Data Analyst*

November 2007

TEENAGE PREGNANCY, ARIZONA, 1996-2006

Table of Contents

PURPOSE.....	1
METHODS AND SOURCES.....	1
DATA ORGANIZATION.....	1
COMPARATIVE NATIONAL AND STATE DATA.....	2
KEY FINDINGS.....	2
DATA TABLES.....	13

List of Figures

Figure 1	3
PREGNANCY RATES BY AGE GROUP AND YEAR AMONG FEMALES 19 OR YOUNGER, ARIZONA, 1996-2006	
Figure 2	3
TRENDS IN THE NUMBER OF PREGNANCIES AND PREGNANCY RATES AMONG FEMALES 19 OR YOUNGER, ARIZONA, 1996-2006	
Figure 3	4
TRENDS IN THE NUMBER OF PREGNANCIES BY RACE/ETHNICITY AMONG FEMALES 19 OR YOUNGER, ARIZONA, 1996-2006	
Figure 4	4
COMPARISON OF PREGNANCY RATES BY YEAR AMONG HISPANICS OR LATINOS AND ALL FEMALES 19 OR YOUNGER, ARIZONA, 1996-2006	
Figure 5	5
COMPARISON OF PREGNANCY RATES BY YEAR AMONG WHITE NON-HISPANICS AND ALL FEMALES 19 OR YOUNGER, ARIZONA, 1996-2006	
Figure 6	5
COMPARISON OF PREGNANCY RATES BY YEAR AMONG AMERICAN INDIANS OR ALASKA NATIVES AND ALL FEMALES 19 OR YOUNGER, ARIZONA, 1996-2006	
Figure 7	6
COMPARISON OF PREGNANCY RATES BY YEAR AMONG BLACKS OR AFRICAN AMERICANS AND ALL FEMALES 19 OR YOUNGER, ARIZONA, 1996-2006	
Figure 8	6
COMPARISON OF PREGNANCY RATES BY YEAR AMONG ASIANS OR PACIFIC ISLANDERS AND ALL FEMALES 19 OR YOUNGER, ARIZONA, 1996-2006	
Figure 9	7
PROPORTIONAL CONTRIBUTION OF SURGICAL AND NON-SURGICAL ABORTIONS BY YEAR AMONG FEMALES 19 OR YOUNGER, ARIZONA, 2001-2006	
Figure 10	7
PROPORTIONAL CONTRIBUTION OF NON-SURGICAL AND SURGICAL ABORTIONS BY RACE/ETHNICITY AMONG FEMALES 19 OR YOUNGER, ARIZONA, 2006	
Figure 11	8
CUMULATIVE NUMBER OF MOTHERS WHO WERE 19 OR YOUNGER IN ARIZONA BY YEAR, 2000-2006	
Figure 12	8
RATES OF FIRST AND REPEAT BIRTHS TO FEMALES 15-19 YEARS, ARIZONA, 2000-2006	
Figure 13	9
BIRTHS TO MOTHERS 19 OR YOUNGER BY MARITAL STATUS, ARIZONA, 1986, 1996 AND 2006	
Figure 14	9
NUMBER OF BIRTHS TO MOTHERS 19 OR YOUNGER BY PAYEE, ARIZONA, 1996 AND 2006	
Figure 15	10
TRENDS IN THE INCIDENCE OF SEXUALLY TRANSMITTED INFECTIONS AMONG FEMALES 15-19 YEARS, ARIZONA, 1996-2006	

List of Figures (continued)

Figure 16	10
CUMULATIVE NUMBER OF CASES OF GENITAL HERPES AMONG FEMALES 15-19 YEARS, ARIZONA, 1997-2006	
Figure 17	11
PERCENTAGE OF FEMALE HIGH SCHOOL STUDENTS, WHO EVER HAD SEXUAL INTERCOURSE, ARIZONA, 2005	
Figure 18	11
PERCENTAGE OF FEMALE HIGH SCHOOL STUDENTS, WHO USED BIRTH CONTROL PILLS OR CONDOMS TO PREVENT PREGNANCY, ARIZONA, 2005	

List of Tables

Table 1	14
PREGNANCIES AND PREGNANCY OUTCOME BY AGE GROUP AND YEAR, FEMALES 19 OR YOUNGER, ARIZONA, 1996-2006	
Table 2	15
PREGNANCY RATES BY PREGNANCY OUTCOME, AGE GROUP AND YEAR, FEMALES 19 OR YOUNGER, ARIZONA, 1996-2006	
Table 3	16
LIVE BIRTHS TO FEMALES 19 OR YOUNGER BY AGE GROUP, RACE/ETHNICITY AND YEAR, ARIZONA, 1996-2006	
Table 4	17
ABORTIONS TO FEMALES 19 OR YOUNGER BY AGE GROUP, RACE/ETHNICITY AND YEAR, ARIZONA, 1996-2006	
Table 5	18
NUMBER OF PREGNANCIES BY PREGNANCY OUTCOME, RACE/ETHNICITY AND YEAR AMONG FEMALES 17 OR YOUNGER WITH RATES, ARIZONA, 1996-2006	
Table 6	19
NUMBER OF PREGNANCIES BY PREGNANCY OUTCOME, RACE/ETHNICITY AND YEAR AMONG FEMALES 15-17 YEARS OLD WITH RATES, ARIZONA, 1996-2006	
Table 7	20
NUMBER OF PREGNANCIES BY PREGNANCY OUTCOME, RACE/ETHNICITY AND YEAR AMONG FEMALES 18-19 YEARS OLD WITH RATES, ARIZONA, 1996-2006	
Table 8	21
NUMBER OF PREGNANCIES BY PREGNANCY OUTCOME, RACE/ETHNICITY AND YEAR AMONG FEMALES 19 OR YOUNGER WITH RATES, ARIZONA, 1996-2006	
Table 9	22
TRENDS IN PREGNANCY RATES BY COUNTY OF RESIDENCE AMONG FEMALES 10-17 AND 18-19 YEARS, ARIZONA, 1996-2006	
Table 10	23
LIVE BIRTHS TO FEMALES 19 OR YOUNGER AS A PERCENTAGE OF TOTAL LIVE BIRTHS BY AREA, RACE/ETHNICITY AND YEAR, ARIZONA. 1996-2006	
Table 11	24
BIRTH RATES BY AGE GROUP FOR FEMALES 19 OR YOUNGER, ARIZONA AND UNITED STATES, 1996-2006	
Table 12	25
REPEAT PREGNANCIES AMONG TEENAGE MOTHERS GIVING BIRTH BY AGE AND YEAR, ARIZONA, 1996-2006	
Table 13	26
CUMULATIVE NUMBER OF MOTHERS WHO WERE 19 OR YOUNGER IN ARIZONA IN 2006	
Table 14	27
TRENDS IN TEEN PREGNANCY RATES BY RACE/ETHNICITY AND AGE GROUP (INCLUDING REVISED RATES FOR 1996-1999), ARIZONA, 1996-2006	

List of Tables (continued)

Table 15	28
TRENDS IN SEXUALLY TRANSMITTED INFECTIONS BY AGE GROUP AND YEAR AMONG FEMALES 10-19 YEARS, ARIZONA, 1996-2006	
Table 16	29
TRENDS IN THE INCIDENCE RATES OF SEXUALLY TRANSMITTED INFECTIONS BY AGE GROUP AND YEAR AMONG FEMALES 10-19 YEARS, ARIZONA, 1996-2006	
Table 17	30
PREGNANCIES AND PREGNANCY RATES, FEMALES 19 OR YOUNGER BY COUNTY OF RESIDENCE, ARIZONA, 2006	
Table 18	31
BIRTHS AND BIRTH RATES, FEMALES 19 OR YOUNGER BY COUNTY OF RESIDENCE, ARIZONA, 2006	
Table 19	32
PREGNANCY RATES AND NUMBER OF LIVE BIRTHS, FETAL DEATHS AND ABORTIONS TO TEENS BY INDIVIDUAL AGE, ARIZONA, 2006	
Table 20	33
BIRTHS TO FEMALES 19 OR YOUNGER BY AGE AND COUNTY OF RESIDENCE, ARIZONA, 2006	
Table 21	34
ABORTIONS TO FEMALES 19 OR YOUNGER BY AGE AND COUNTY OF RESIDENCE, ARIZONA, 2006	
Table 22	35
SOURCES OF PAYMENT FOR LABOR AND DELIVERY, FEMALES 19 OR YOUNGER BY AGE AND COUNTY OF RESIDENCE, ARIZONA, 2006	
Table 23	36
SOURCES OF PAYMENT FOR LABOR AND DELIVERY, FEMALES 19 OR YOUNGER BY AGE GROUP, ARIZONA, 2006	
Table 24	37
TEENAGE BIRTHS BY NUMBER OF PREVIOUS PREGNANCIES BY AGE GROUP, ARIZONA, 2006	
Table 25	37
TEENAGE BIRTHS BY MARITAL STATUS AND AGE GROUP, ARIZONA, 2006	
Table 26	37
TEENAGE BIRTHS BY MOTHER'S EDUCATION AND AGE GROUP, ARIZONA, 2006	
Table 27	38
TEENAGE BIRTHS BY TRIMESTER OF ENTRY INTO PRENATAL CARE AND AGE GROUP, ARIZONA, 2006	
Table 28	38
TEENAGE BIRTHS BY NUMBER OF PRENATAL VISITS AND AGE GROUP, ARIZONA, 2006	
Table 29	39
TOBACCO AND/OR ALCOHOL USE DURING PREGNANCY AMONG FEMALES 19 OR YOUNGER BY AGE GROUP, ARIZONA, 2006	
Table 30	40
RISK FOR LOW-BIRTHWEIGHT (LBW) BIRTHS BY SELECTED CHARACTERISTICS OF FEMALES 19 OR YOUNGER, ARIZONA, 2006	
Table 31	41
POPULATION OF FEMALES 19 OR YOUNGER, NUMBER OF PREGNANCIES AND PREGNANCY RATES BY AGE GROUP AND RACE/ETHNICITY, ARIZONA, 2006	
Table 32	42
POPULATION OF FEMALES 19 OR YOUNGER BY COUNTY OF RESIDENCE, ARIZONA 2006	
Appendix	43
HOW TO COMPUTE THE RATES OF FIRST AND REPEAT CHILDBEARING	

PURPOSE

This report is the twenty-first annual update of information about pregnancies among females under age 20. The data for 2006 is placed in a temporal context by comparing it with the data from the preceding years.

METHODS AND SOURCES

In this report, pregnancies are measured as the sum of three components: live births, fetal deaths (or stillbirths) and reported abortions to Arizona resident women, unless otherwise specified. Not included are spontaneous fetal losses that occur at less than 20 weeks of gestation. Induced terminations of pregnancy do not include those performed out-of-state to Arizona residents, since they are not reported in Arizona. Pregnancy statistics for Arizona are not available on a sub-county level.

Teens are defined as 10-14 year old preadolescents and adolescents 15-19 years of age. Where possible, the data presented distinguishes 18-19 year old teenagers from those aged 15-17 and girls less than 15 years of age.

The primary source documents for the data are the certificates of live births, certificates of fetal deaths and reports of induced terminations of pregnancy filed with the Arizona Department of Health Services.

Several data sources were utilized in producing the population denominators for Arizona's resident females, used to calculate rates. The denominators for 2000 are the actual census enumerations from the U.S. Census Bureau. In order to obtain the population denominators for 2001-2005, the 2000 percentages of population breakdowns (or census shares) by age group, gender and race/ethnicity were applied to total state and total county annual population estimates released by the Department of Economic Security (DES).

The longer the time after the census, the less likely it is that the 2000 census shares continue to reflect the "true" proportions of population breakdowns. Beginning with the 2006 population estimates we no longer use the year 2000 census shares. For 2006, the totals for the State and each of its counties agree with the projections released by the DES on March 31, 2006 (<http://www.workforce.az.gov/?PAGEID=67&SUBID=138>). The percentages of population breakdowns by single-year of age, gender and race/ethnicity were derived from the "Bridged-Race Vintage 2005 Postcensal Population Estimates for Calculating Vital Rates", available from the National Center for Health Statistics (NCHS: <http://www.cdc.gov/nchs/about/major/dvs/popbridge/datadoc.htm#vintage2005>). These percentages were then applied to total state and county population projections for 2006 from DES. The 2006 population estimates by race/ethnicity should not be compared with the previously published estimates for 2001-2005, which used the year 2000 census shares.

The pregnancy rates for 1996-1999 were revised in this report using the population denominators that are consistent with the 2000 census. The population projected previously from the 1990 census underestimated the growth of the Hispanic population during the 1990s. According to the 2000 census, there were 118,490 Hispanic females 19 years or younger in Arizona, 37.5 percent more than the estimated by the Census Bureau number of 86,203 in 1999. The revised denominators for 1996-1999 were derived from the "Bridged-race intercensal population estimates for July 1, 1990-July 1, 1999, by year, county, single-year of age, Hispanic origin, and sex" provided by NCHS.

DATA ORGANIZATION

Tables 1-16 present annual numbers and rates of pregnancy, fertility and abortion by year from 1996 to 2006, age group and race/ethnicity for Arizona teens. Temporal trends and changes may be assessed from this data. Proportional contribution of teen births to all births is shown in Table 10 by area of residence and race/ethnic group in Arizona from 1996 to 2006. Table 11 compares birth rates in Arizona to those in the United States. The annual numbers of repeat pregnancies among teenage mothers are shown by age and year from 1996 to 2006 in Table 12.

Three new data tables were added to the current edition of the report. Table 14 presents teen pregnancy rates by race/ethnicity and age group by year from 1996 to 2006. It includes revised pregnancy rates for 1996-1999. Table 15 provides information about the incidence of sexually transmitted infections among females 10-14 and 15-19 years old in Arizona in 1996-2006. Table 16 shows the incidence rates by year from 1996 to 2006.

Frequency counts, proportions and rates in tables 17-32 all apply to the 2006 data. Tables 17-18 and 20-22 provide data by county of residence. Table 19 presents pregnancy rates by single year of age among females 19 and younger. Live births to teenage mothers are also reported in Tables 23-30 by marital status, education, previous pregnancies, trimester of entry into prenatal care, source of payment for labor and delivery and tobacco and alcohol use during pregnancy. The 2006 population denominators for Arizona resident females by age group and race/ethnicity, as well as by age group and county of residence are presented in Table 31 and Table 32. The *Appendix* demonstrates "How to compute the rates of first and repeat childbearing" using the annual data for 2000-2006.

COMPARATIVE NATIONAL AND STATE DATA

Timely and reliable teen pregnancy statistics for other States and the Nation are not easily available. *"Health, United States, 2005"*, the premier annual publication of The Department of Health and Human Services, contains no information about pregnancies. The latest available national teenage birth rates for 2004 were published in September, 2006. No national abortion data have been available since the 2002 calendar data year, and no fetal death data have been available since 2004. The most recent data on teen pregnancy rates were published using year 2000 data by The National Center for Health Statistics (NCHS), the principal health statistics agency.

Data on abortions and pregnancies are published by the Guttmacher Institute (formerly Alan Guttmacher Institute). Its latest report, *"U.S. Teenage Pregnancy Statistics. National and State Trends and Trends by Race/Ethnicity"* was updated in September 2006. It includes pregnancy estimates by outcome for 1972-2003. The Guttmacher Institute uses the NCHS data for the number of births and its own estimates of abortions and miscarriages. The number of abortions is calculated from surveys the Institute conducts of known abortion providers. However, the number of abortions by state of residence, woman's age or Hispanic origin is not available from these surveys. The Institute calculates these numbers by applying the distributions of characteristics compiled by the CDC Division of Reproductive Health (which receives the data from State health departments) to the results of its Abortion Provider Survey. For instance, abortion estimates by age group and state are "based on proportion of abortions obtained by women of the same age in neighboring and similar states".¹ Unfortunately, the above approach does little to reveal the actual state-specific patterns of abortion practices, particularly when the states differ with respect to the accessibility of abortion providers or the prevalence of minorities among resident women in the childbearing ages (15-44 years).

In addition and unlike other data sources, the Guttmacher Institute includes in its estimated number of pregnancies, the estimated numbers of miscarriages: "The number of miscarriages was estimated as 20 percent of births plus 10 percent of abortions".² Again, this approach does little to reveal the actual differences in the miscarriage risks by age group, race/ethnicity or area of residence.

No comparable state-by-state data for 2005 or 2006 are available at this time.

KEY FINDINGS

The following section presents some illustrative findings contained in the figures and tables of the report. It is not intended to be an exhaustive analysis of the tabulated data.

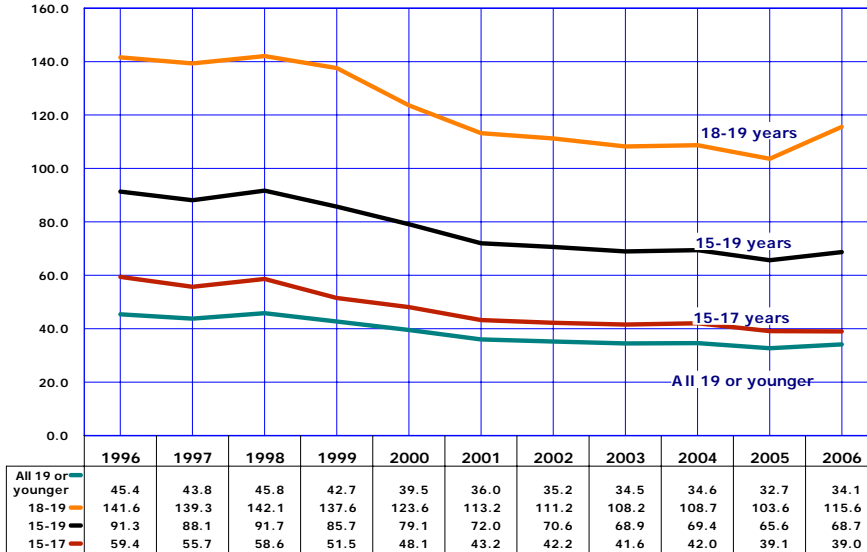
- **From 1996 to 2006, the teen pregnancy rate overall fell by 31 percent.**
- **However, the absolute number of teen pregnancies increased by 10.3 percent from 13,521 in 1996 to 14,918 in 2006. The latter is the highest number of teen pregnancies ever recorded in the State.**
- **The increase is partially explained by fact that the birth rate for 18-19 year olds increased by an unprecedented 13.3 percent.**
- **In addition, the number of pregnancies among White non-Hispanic females 19 years or younger sharply increased by 14.2 percent and for Hispanic or Latino females 19 years or younger by 8.4 percent.**
- **While the teen pregnancy rate has fallen in Arizona, the drop in the rate has not been enough to offset the growth in the female teenage population.**
- **Both first and repeat birth rates increased between 2005 and 2006.**
- **In 2006, the Arizona Health Care Cost Containment System (AHCCCS) paid for 79.9 percent of the deliveries to mothers 19 or younger.**
- **The total number of sexually transmitted infections among females 19 or younger exceeded 7,400 compared to 4,200 reported in 1996.**

¹*Abortion Factbook 1992 Edition. Readings, Trends and State and Local Data to 1988.* Stanley K. Henshaw and Jennifer Van Vort, Eds. New York: The Alan Guttmacher Institute 1992.

² *U.S. Teenage Pregnancy Statistics. National and State Trends and Trends by Race/Ethnicity.* New York: Guttmacher Institute. Updated September 2006.

KEY FINDINGS

Figure 1
Pregnancy Rates by Age Group and Year Among Females 19 or Younger, Arizona, 1996-2006

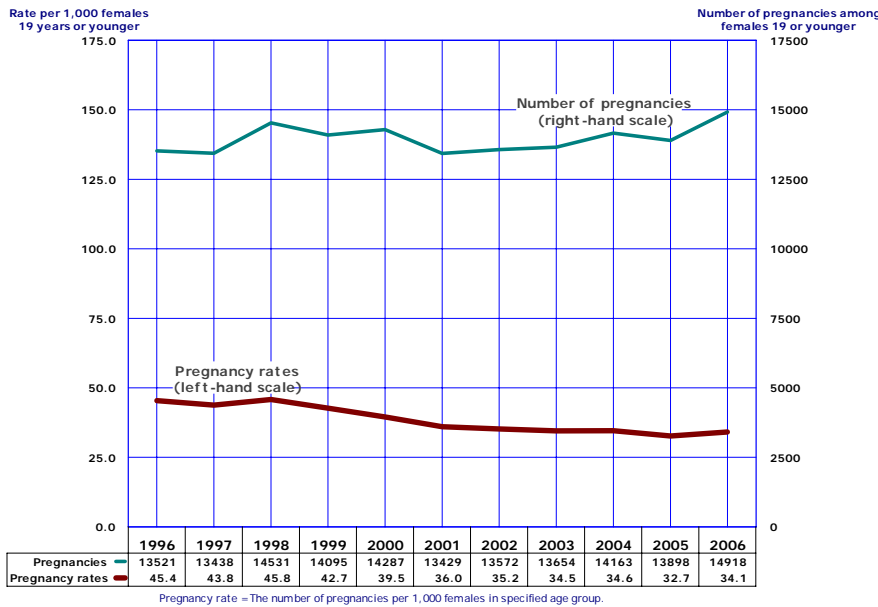


Note: All rates are per 1,000 females in specified age group.

The pregnancy rate for Arizona teenagers 15-19 years old in 2006 was 68.7 pregnancies per 1,000 females (**Figure 1, Table 2**), 4.7 percent greater than in 2005. The pregnancy rate for younger teenagers 15-17 years old remained essentially unchanged at 39.0/1,000 (compared to 39.1 in 2005; **Figure 1, Table 2**). In contrast, the pregnancy rate for older teenagers 18-19 years old increased by 11.6 percent from 103.6/1,000 in 2005 to 115.6/1,000 in 2006 (**Figure 1, Table 2**).

The number of pregnancies among all females aged 19 years or younger increased by 1,020 from 13,898 in 2005 to 14,918 in 2006 (**Table 1**). Among the three pregnancy outcomes, the number of teen birth increased by 983 (from 11,933 to 12,916), the number of reported abortions increased by 27 (from 1,892 to 1,919), and the number of fetal losses increased by 10 (from 73 to 83).

Figure 2
Trends in the Number of Pregnancies and Pregnancy Rates Among Females 19 or Younger, Arizona, 1996-2006



Pregnancy rate = The number of pregnancies per 1,000 females in specified age group.

There is a difference between pregnancy rates and the absolute number of pregnancies. The teen pregnancy rate measures the proportion of teenagers becoming pregnant in a given year; in other words, the relative "risk for pregnancy" in a population "at risk". The number of pregnancies is also determined by the size of the population "at risk": or in this case by the number of teenage females in the population.

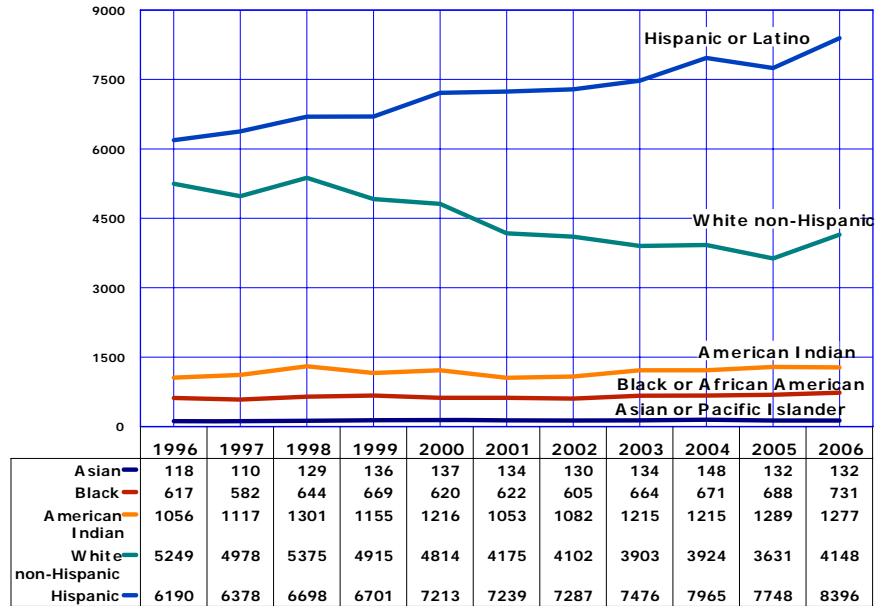
The number of teen pregnancies increased by 10.3 percent from 13,521 in 1996 to 14,918 in 2006 (**Figure 2, Table 1**). However, the proportional increase in the number of females 19 years old or younger was 3.8 times greater at 39.1 percent from 314,203 in 1996 to 436,998 in 2006. While the teen pregnancy rate has fallen in Arizona, the drop in the rate has not been enough to offset the growth in the female teenage population (**Figure 2**). In fact, the number of 14,918 pregnancies to females 19 years old or younger in Arizona in 2006 was the highest number ever recorded in the State.

KEY FINDINGS

The number of pregnancies to Hispanic females aged 19 years or younger exceeded the number of pregnancies among white non-Hispanic peers in every year since 1994 (**Figure 3** and **Table 8** in this report show only the data for 1996-2006). In 2006, Hispanic or Latino mothers accounted for 56.3 percent of all pregnancies in this age group, followed by White non-Hispanics (27.8 percent). Black or African American, Asian or Pacific Islander and American Indian females aged 19 years or younger accounted for a smaller share of pregnancies in 2006 (14.3 percent) than they did in 2005 (15.2 percent).

After a substantial decrease between 1998 and 2005, the number of pregnancies among White non-Hispanic females aged 19 years or younger sharply increased by 14.2 percent from 3,631 in 2005 to 4,148 in 2006 (**Figure 3**). The number of pregnancies among Hispanic or Latino females 19 years or younger also increased by 8.4 percent from 7,748 in 2005 to 8,396 in 2006.

Figure 3
Trends in the Number of Pregnancies* by Race/Ethnicity Among Females 19 or Younger, Arizona, 1996-2006



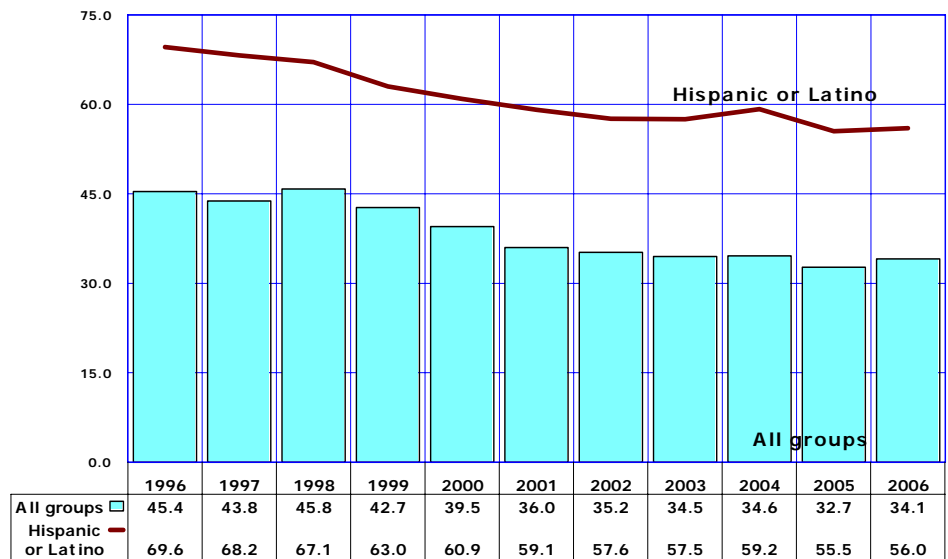
* The sum of live births + induced abortions + spontaneous fetal deaths.

The teen pregnancy rates for all race and ethnic groups were lower in 2006 than in 1996 (**Figure 1**). However, the temporal trends in annual teen pregnancy rates differed considerably by race/ethnicity.

Figures 4, 5, 6, 7 and **8** reveal race/ethnicity-specific trends in teen pregnancy rates in Arizona in 1996-2006.

The pregnancy rate fell 17.4 percent for Hispanic or Latino females 19 years or younger in 1996-2003 and then increased in 2004 and 2006. (**Figure 4**). In each year from 1996 to 2006, the pregnancy rates of Hispanic or Latino females were consistently greater than the average rates for all females 19 years or younger in Arizona. In 2006, the Hispanic rate exceeded the average rate for all groups by 64.2 percent.

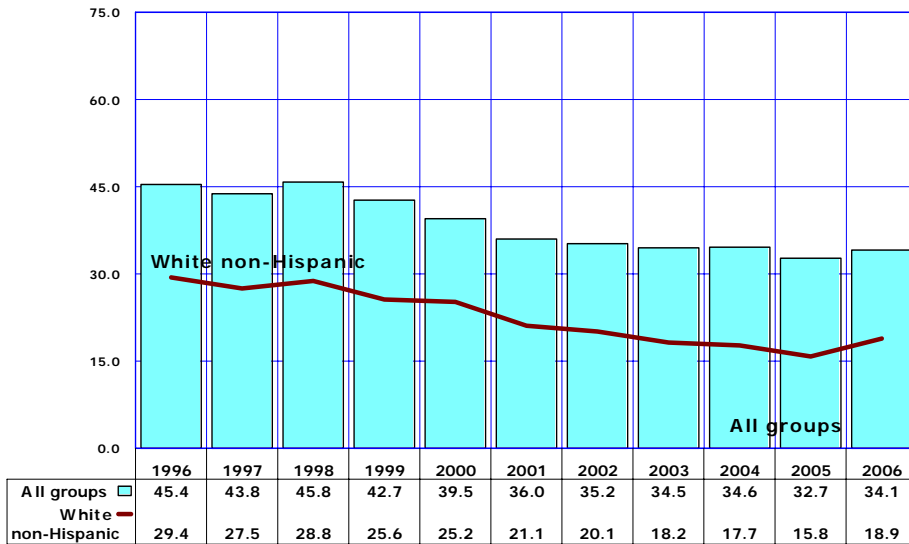
Figure 4
Comparison of Pregnancy Rates by Year Among Hispanics or Latinos and All Females 19 or Younger, Arizona, 1996-2006



Note: all rates are per 1,000 females in specified group.

KEY FINDINGS

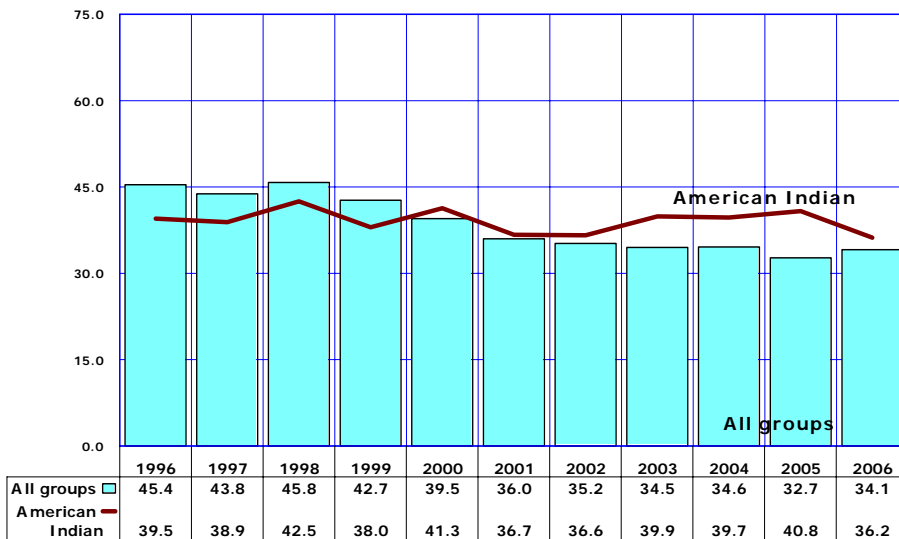
Figure 5
Comparison of Pregnancy Rates by Year Among White non-Hispanics
and All Females 19 or Younger, Arizona, 1996-2006



After a substantial decrease of 46.3 percent between 1996 and 2005, the pregnancy rate for White non-Hispanic sharply increased by 19.6 percent in 2006 (Figure 5). In each year from 1996 to 2006, the pregnancy rates for White non-Hispanic females were lower than the average rates for all females 19 years or younger in Arizona.

Note: all rates are per 1,000 females in specified group.

Figure 6
Comparison of Pregnancy Rates by Year Among American Indians or
Alaska Natives and All Females 19 or Younger, Arizona, 1996-2006



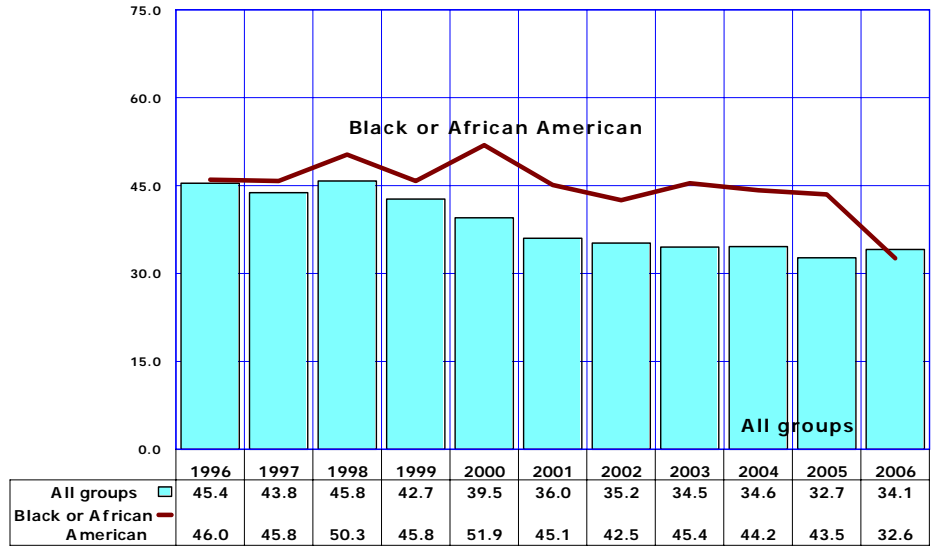
Despite some of the decreases noted between 1996 and 2006, the annual pregnancy rates among American Indian females 19 years or younger erratically varied from year to year (Figure 6). The American Indian rates were lower than the average in each year from 1996 to 1999, but higher in 2000-2006.

Note: all rates are per 1,000 females in specified group.

KEY FINDINGS

Figure 7
Comparison of Pregnancy Rates by Year Among Blacks or African Americans and All Females 19 or Younger, Arizona, 1996-2006

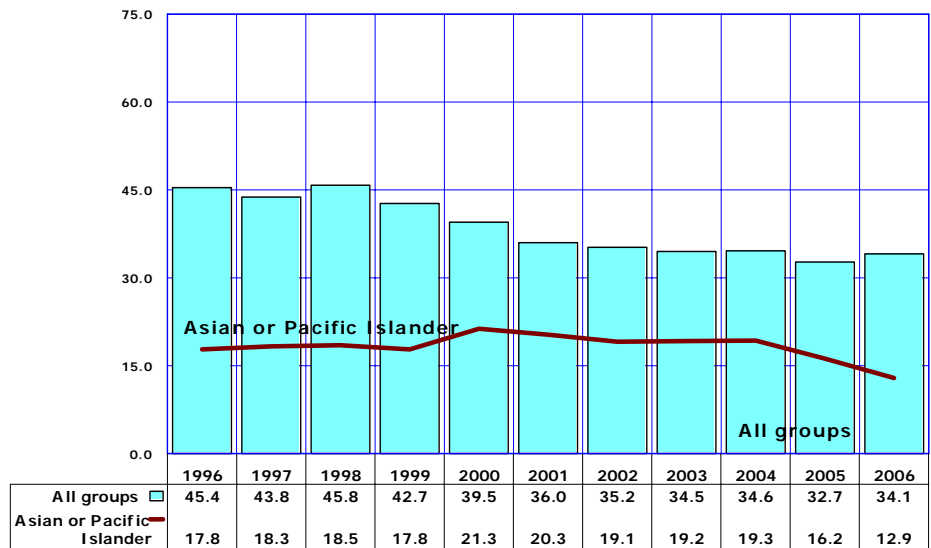
The pregnancy rates for Black or African American females 19 years or younger declined for the 3rd consecutive year from 45.4/1,000 in 2003 to 32.6/1,000 in 2006 (Figure 7). Unlike the annual pregnancy rates for 1996-2005, the 2006 pregnancy rate for Black or African American teenagers was lower than the pregnancy rate for all groups.



Note: all rates are per 1,000 females in specified group.

Figure 8
Comparison of Pregnancy Rates by Year Among Asians or Pacific Islanders and All Females 19 or Younger, Arizona, 1996-2006

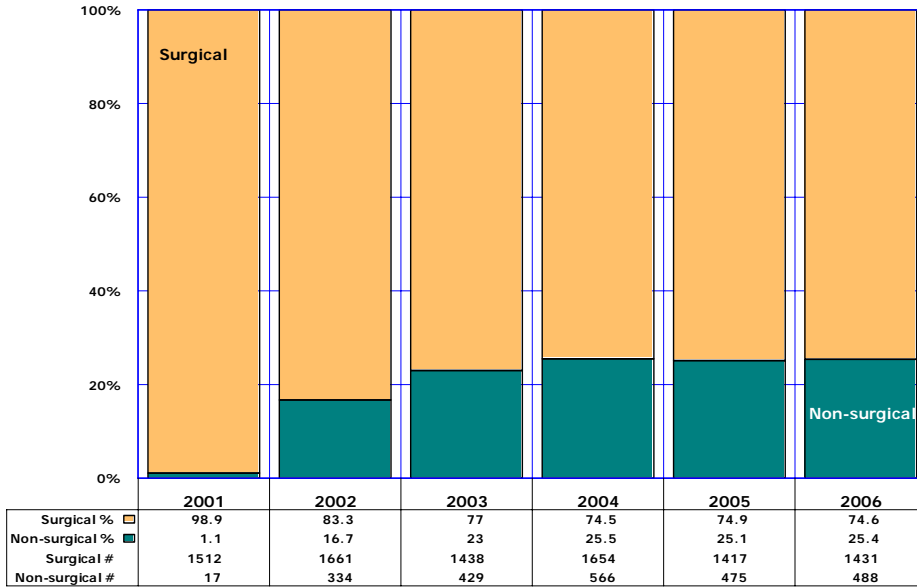
In each year from 1996 to 2006, the pregnancy rates for Asian or Pacific Islander females 19 years or younger were substantially lower than the average rates among all females 19 years or younger in Arizona (Figure 8). In 2006, the Asian rate (12.9/1,000) was 62.2 percent lower than the rate for all groups (34.1/1,000).



Note: all rates are per 1,000 females in specified group.

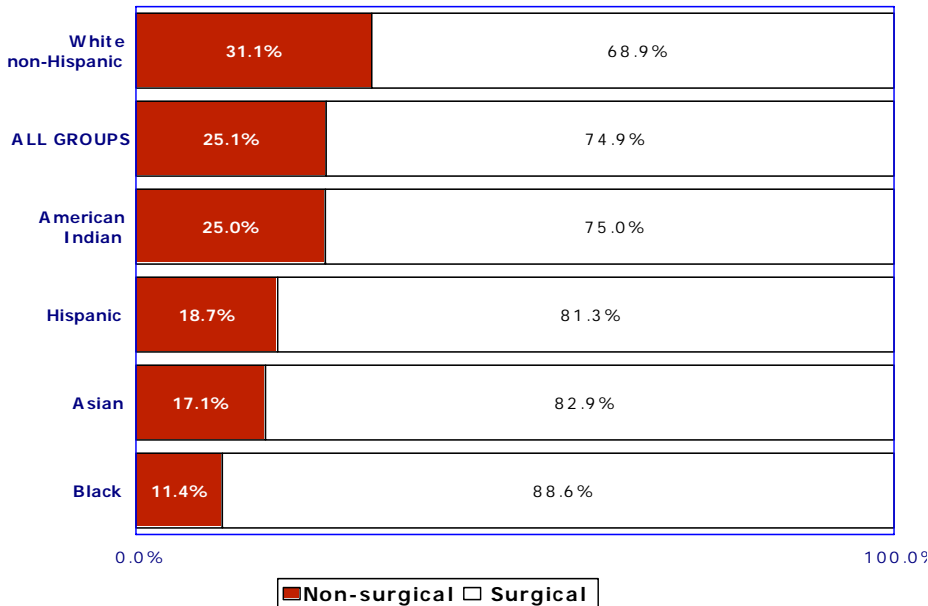
KEY FINDINGS

Figure 9
Proportional Contribution of Surgical and Non-Surgical Abortions
by Year Among Females 19 or Younger, Arizona, 2001-2006



The number of reported abortions to females 19 years or younger slightly increased from 1,892 in 2005 to 1,919 in 2006 (Table 1). In 2006, as in 2005, non-surgical abortions accounted for approximately 25 percent of all procedures reported in Arizona for females 19 years old or younger.

Figure 10
Proportional Contribution of Non-Surgical and Surgical Abortions by
Race/Ethnicity Among Females 19 or Younger, Arizona, 2006



Only among White non-Hispanic teens the proportion of non-surgical abortions exceeded the average for all groups (Figure 10). The ratios of reported non-surgical abortions among Black and Asian females were the lowest among ethnic groups.

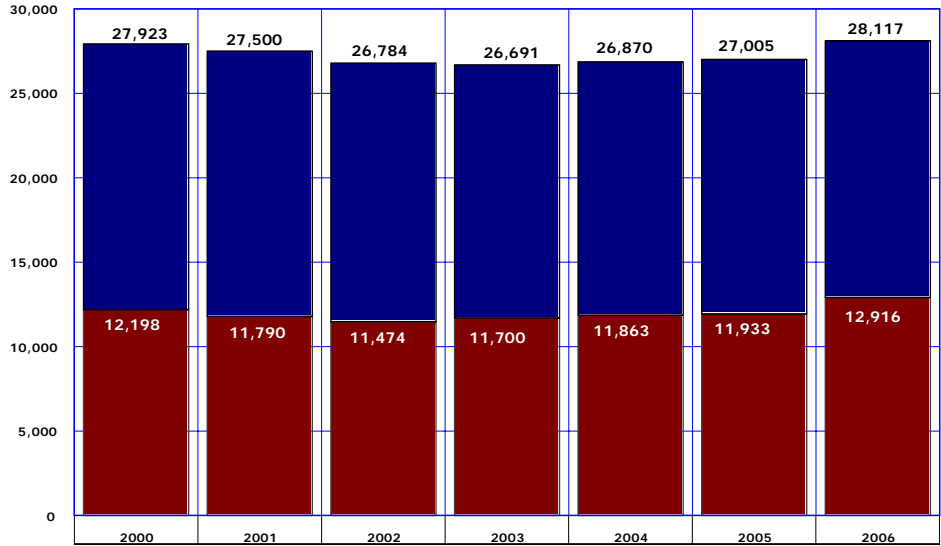
Non-surgical: Mifepristone, Methotrexate, RU486, etc.

KEY FINDINGS

Figure 11
Cumulative Number of Mothers Who Were 19 or Younger in Arizona by Year, 2000-2006

■ Gave birth that year ■ Gave birth before and was still 19 years old or younger

There were approximately 28,117 mothers under age 20 in Arizona in 2006, the highest number ever reported in the State. Among them there were the 12,196 who gave birth that year and the 15,921 who gave birth prior to 2006 and were still 19 years old or younger (Figure 11, Table 13). The cumulative number of mothers who were 19 years or younger in Arizona increased by 5.3 percent from 26,691 in 2003 to 28,117 in 2006.

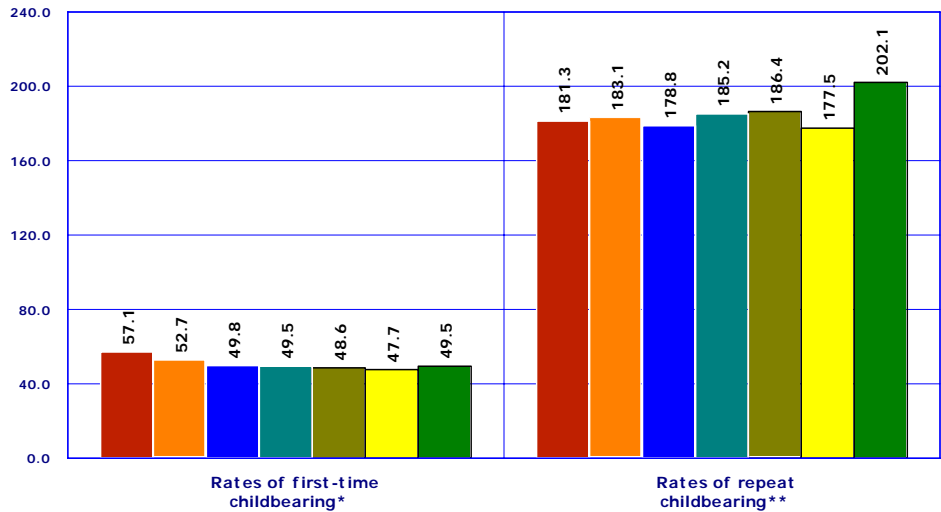


* See Table 26 for more details.

Figure 12
Rates of First and Repeat Births to Females 15-19 Years, Arizona, 2000-2006

■ 2000 ■ 2001 ■ 2002 ■ 2003 ■ 2004 ■ 2005 ■ 2006

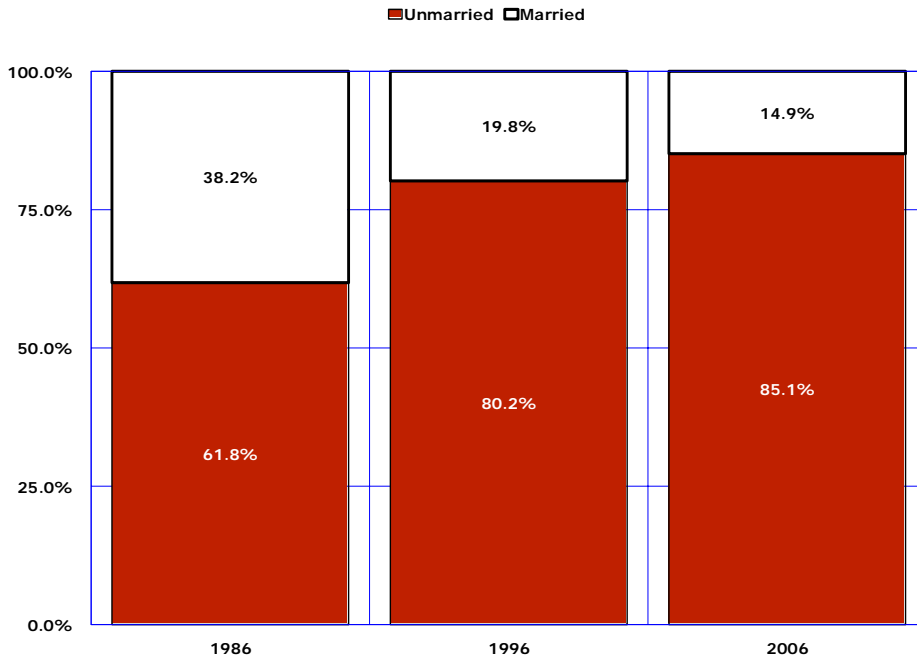
The first birth rate for childless teenagers has dropped 16.5 percent from 57.1 first-time births per 1,000 females 15-19 years old in 2000, to 47.7/1,000 in 2005. The first birth rate increased by 3.8 percent in 2006 to 49.5/1,000 (Figure 12). The repeat birth rates for teenagers who had already had a child sharply increased by 13.9 percent from 177.5 in 2005 to 202.1 in 2006 (Figure 7). Twenty percent of teenagers (202.1/1,000) who already had one child gave birth again in 2006, compared to eighteen percent (177.5 /1,000) in 2005.



* Number of first births per 1,000 females 15-19 years old who have not had a birth.
** Number of repeat births per 1,000 females 15-19 years old who have had a birth previously.
See Appendix "How to compute the rates of first and repeat childbearing?"

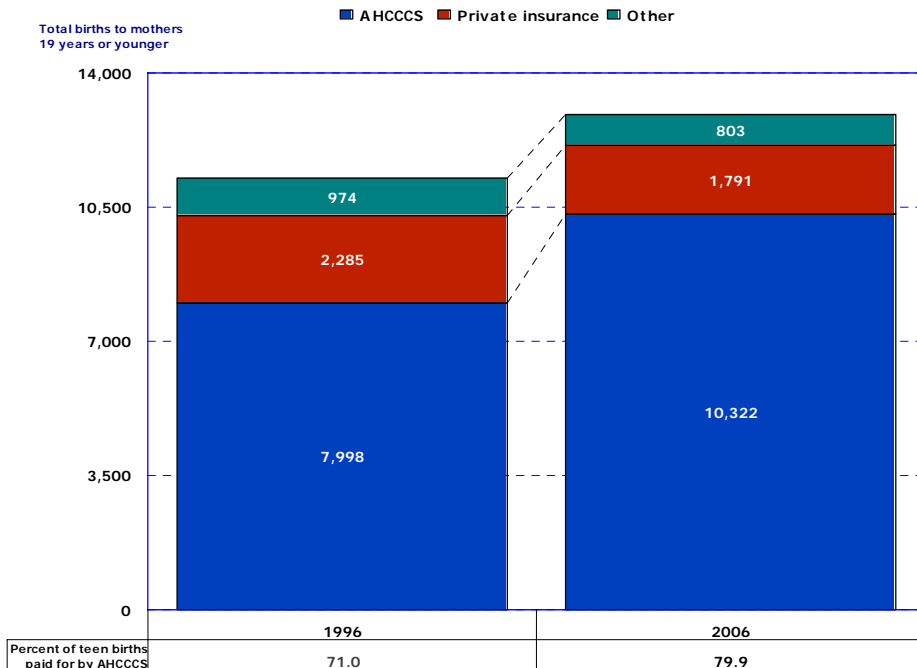
KEY FINDINGS

Figure 13
Births to Mothers 19 or Younger by Marital Status,
Arizona, 1986, 1996 and 2006



Unwed mothers have accounted for an increasing annual proportion of births throughout the 1980s and 1990s. Two decades ago, the proportion of nonmarital births among teenagers 19 years old or younger was still around 60 percent (**Figure 13**). In 2006, nonmarital births accounted for 85.1 percent of births to mothers 19 years or younger.

Figure 14
Number of Births to Mothers 19 or Younger by Payee,
Arizona, 1996 and 2006

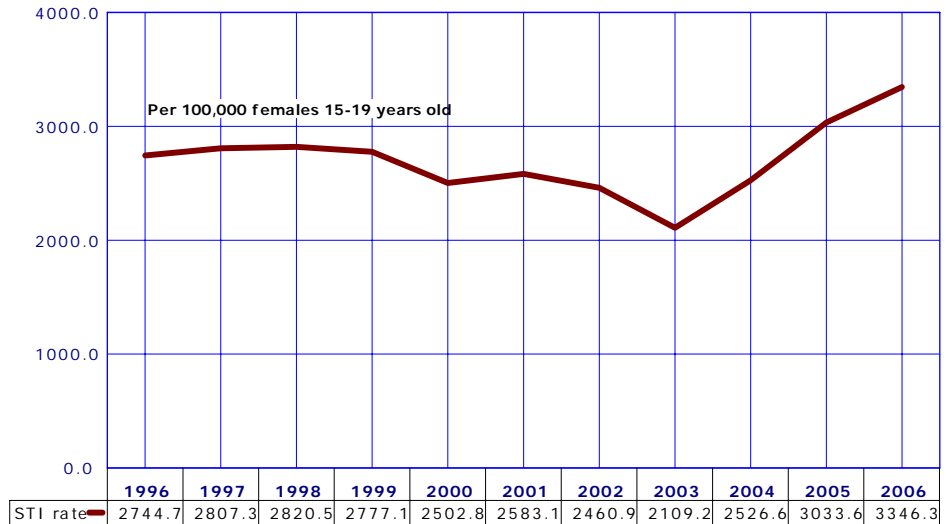


The total number of births to mothers 19 years or younger increased by 14.8 percent from 11,247 in 1996 to 12,916 in 2006 (**Table 1**). In contrast, the number of teen births paid for by the Arizona Health Care Cost Containment System (AHCCCS, the State's Medicaid program) increased by 29.1 percent from 7,998 in 1996 to 10,322 in 2006.

In 2006, the Arizona Health Care Cost Containment System paid for 79.9 percent of the deliveries to mothers 19 or younger (**Table 23**), compared to 71.0 percent in 1996 (**Figure 14**). Only one in seven (13.9 percent) teenage mothers in 2006 had private health insurance to pay the costs of labor and delivery, compared to one in five (20.3 percent) in 1996.

KEY FINDINGS

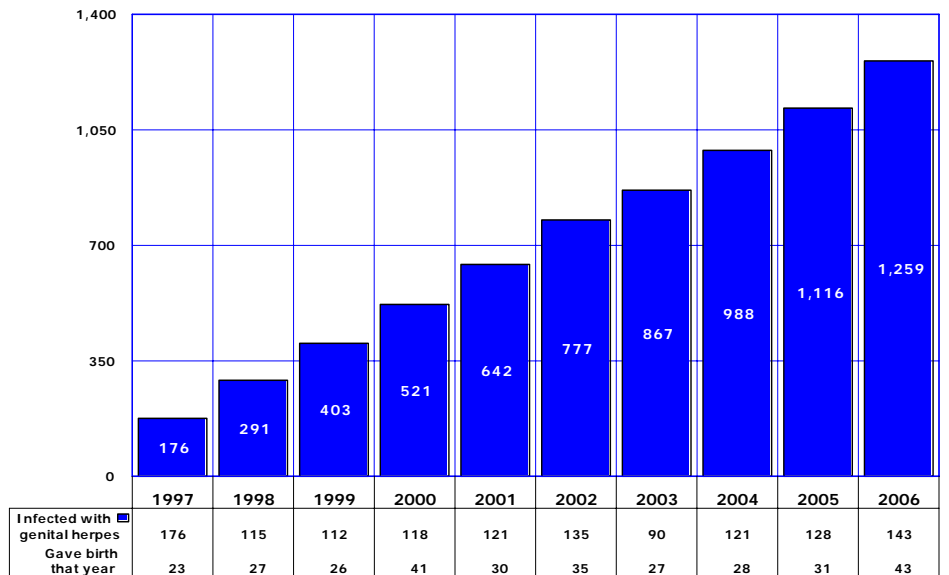
Figure 15
Trends In the Incidence of Sexually Transmitted Infections* Among Females 15-19 Years, Arizona, 1996-2006



In 2006, the total number of sexually transmitted infections (STI) among females aged 19 or younger exceeded 7,400 (Table 15) compared to almost 4,200 reported in 1996. The increase in the number of STI was substantially greater (76.2 percent) than the 46.8 percent increase in the number of females 19 years old or younger from 297,594 in 1996 to 436,998 in 2006.

* The sum of annually reported cases of gonorrhea, chlamydia, genital herpes and early syphilis.
Source: Bureau of Epidemiology and Disease Control Services, Office of Infectious Disease Services.

Figure 16
Cumulative Number of Cases of Genital Herpes Among Females 15-19 Years, Arizona, 1997-2006



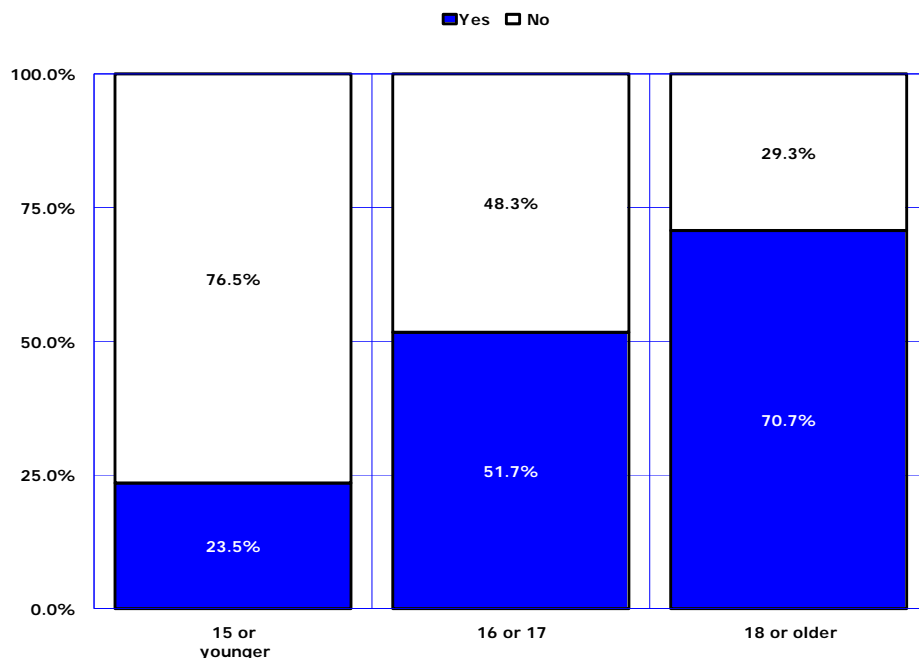
Unlike gonorrhea or chlamydia, genital herpes cannot be cured. Since genital herpes is not a fatal disease, new cases arising each year may add to the pool of people infected with the disease who can then transmit the disease to others.

Assuming that females 15-19 years old reported with genital herpes since 1997 have not died or left the State, the 2006 prevalence of this disease based on 1,259 cases (Figure 16) would be 589.1/100,000. In other words, one in every 165 females aged 15-19 years may be infected.

Genital herpes also is a threat to newborns. Out of 143 females aged 15-19 years who were diagnosed with genital herpes in 2006, 43 (or 30.1 percent) also gave birth that year (Figure 16).

KEY FINDINGS

Figure 17
Percentage of Female High School Students, Who Ever Had Sexual Intercourse, Arizona, 2005

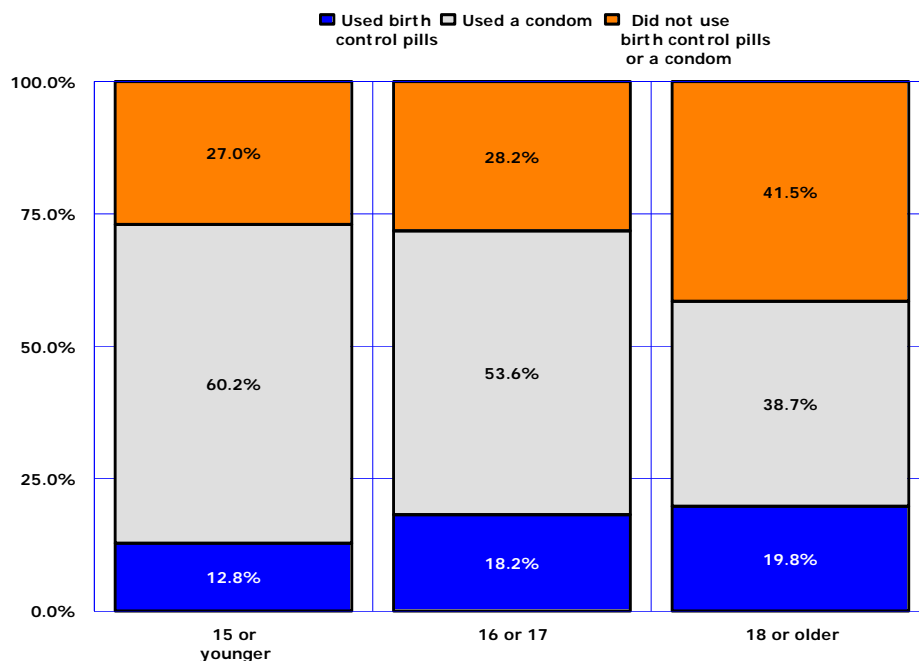


Patterns in sexual activity such as the age at first intercourse and the frequency of intercourse are among the factors accounting for both pregnancy rates and the incidence of sexually transmitted infections.

Nationally, more than one-half (51 percent) of 15-17-year-old females have had sexual contact with another person. At age 18-19, 83 percent of females have had a sexual experience with another person.¹

The age-specific proportions of female high school students who ever had sexual intercourse in **Figure 17** are from the latest Arizona Youth Risk Behavior Survey conducted in 2005².

Figure 18
Percentage of Female High School Students, Who Used Birth Control Pills Or Condoms to Prevent Pregnancy, Arizona, 2005



According to the National Survey of Family Growth, the oral contraceptive pill is the leading method of contraception in the United States.³ The survey provides no state-specific data.

The 2005 Arizona Youth Risk Behavior Survey results for “students who had sexual intercourse during the past three months”⁴ reveal that compared to younger teens, older teens were less likely to use birth control pills before or a condom during, the last intercourse (**Figure 18**). It is quite unlikely that over 41 percent of sexually active females 18-19 years old in 2005 have used other methods instead (such as female sterilization or a 3-month injectable contraceptive Depo-Provera). From 2005 to 2006, the birth rate per 1,000 females 18-19 years old increased by an unprecedented 13.3 percent. Perhaps, not a small fraction of those who were sexually active but not using contraception in 2005 were not so much placing themselves at a risk of unintended pregnancy but intentionally trying to have a baby?

¹ Mosher WD, Chandra A, Jones J. Sexual behavior and selected health measures: Men and women 15-44 years of age, United States, 2002. Advance data from vital and health statistics; no 362. Hyattsville, MD: National Center for Health Statistics, 2005.

² Percentage of students who ever had sexual intercourse. See the Arizona YRBS results at <http://www.azed.gov/sa/health/matrix/YRBS2005Results.asp>

³ Mosher WD, Martinez GM, Chandra A, Abma JC, Wilson SJ. Use of contraception and use of family planning services in the United States, 1982-2002. Advance data from vital and health statistics; no 350. Hyattsville, Maryland: National Center for Health Statistics, 2004

⁴ Percentage of students who used a condom during or birth control pills before last sexual intercourse. See the Arizona Youth Risk Behavior Survey results at <http://www.azed.gov/sa/health/matrix/YRBS2005Results.asp>

TEENAGE PREGNANCY, ARIZONA, 1996-2006

DATA TABLES

TABLE 1
PREGNANCIES AND PREGNANCY OUTCOME BY AGE GROUP AND YEAR,
FEMALES 19 OR YOUNGER, ARIZONA, 1996-2006

Pregnancy outcome by year	Total females 19 years or younger	Under 15 years	15-19 years old		
			Total	15-17 years	18-19 years
ALL PREGNANCIES					
1996	13,521	293	13,228	5,262	7,966
1997	13,438	278	13,160	5,096	8,064
1998	14,532	316	14,216	5,482	8,734
1999	14,094	303	13,792	4,993	8,799
2000	14,287	278	14,009	5,016	8,993
2001	13,429	253	13,176	4,661	8,515
2002	13,572	255	13,317	4,696	8,621
2003	13,654	272	13,382	4,755	8,627
2004	14,163	233	13,930	4,955	8,975
2005	13,898	239	13,659	4,790	8,869
2006	14,918	242	14,676	5,105	9,571
LIVE BIRTHS					
1996	11,247	216	11,031	4,340	6,691
1997	11,085	214	10,871	4,219	6,652
1998	11,695	234	11,461	4,397	7,064
1999	11,963	238	11,725	4,236	7,489
2000	12,189	216	11,973	4,284	7,689
2001	11,790	198	11,592	4,080	7,512
2002	11,474	206	11,268	3,952	7,316
2003	11,700	211	11,489	4,110	7,379
2004	11,863	188	11,675	4,227	7,448
2005	11,933	185	11,748	4,179	7,569
2006	12,916	170	12,746	4,450	8,296
ABORTIONS					
1996	2,186	72	2,114	892	1,222
1997	2,233	56	2,177	826	1,351
1998	2,735	78	2,657	1,046	1,611
1999	2,046	60	1,986	727	1,259
2000	1,988	57	1,931	684	1,247
2001	1,528	46	1,482	540	942
2002	1,995	44	1,951	705	1,246
2003	1,867	60	1,807	614	1,193
2004	2,220	44	2,176	703	1,473
2005	1,892	54	1,838	582	1,256
2006	1,919	69	1,850	624	1,226
FETAL LOSSES					
1996	88	5	83	30	53
1997	120	8	112	51	61
1998	102	4	98	39	59
1999	85	5	80	29	51
2000	110	5	105	48	57
2001	111	9	102	41	61
2002	103	5	98	39	59
2003	87	1	86	31	55
2004	80	1	79	25	54
2005	73	0	73	29	44
2006	83	3	80	31	49

TABLE 2
PREGNANCY RATES¹ BY PREGNANCY OUTCOME, AGE GROUP AND YEAR,
FEMALES 19 OR YOUNGER, ARIZONA, 1996-2006

Pregnancy outcome by year	Total females 19 years or younger	Under 15 years	15-19 years old		
			Total	15-17 years	18-19 years
ALL PREGNANCIES					
1996	45.4	1.9	91.3	59.4	141.6
1997	43.8	1.8	88.1	55.7	139.3
1998	45.8	2.0	91.7	58.6	142.1
1999	42.7	1.8	85.7	51.5	137.6
2000	39.5	1.5	79.1	48.1	123.6
2001	36.0	1.3	72.0	43.2	112.2
2002	35.2	1.3	70.6	42.2	111.2
2003	34.5	1.4	68.9	41.6	108.2
2004	34.6	1.1	69.4	42.0	108.7
2005	32.7	1.1	65.6	39.1	103.6
2006	34.1	1.1	68.7	39.0	115.6
LIVE BIRTHS					
1996	37.8	1.4	76.1	49.0	119.0
1997	36.1	1.4	72.8	46.1	114.9
1998	36.9	1.4	73.9	47.0	114.9
1999	36.2	1.4	72.9	43.7	117.1
2000	33.7	1.2	67.6	41.1	105.7
2001	31.6	1.0	63.3	37.8	99.9
2002	29.8	1.0	59.7	35.5	94.3
2003	29.5	1.0	59.2	35.9	92.5
2004	29.0	0.9	58.2	35.8	90.2
2005	28.1	0.9	56.5	34.1	88.4
2006	29.6	0.8	59.6	34.0	100.2
ABORTIONS					
1996	7.4	0.5	14.6	10.1	21.7
1997	7.3	0.4	14.6	9.0	23.3
1998	8.6	0.5	17.1	11.2	26.2
1999	6.1	0.3	12.3	7.5	19.7
2000	5.5	0.3	10.9	6.6	17.1
2001	4.1	0.2	8.1	5.0	12.5
2002	5.2	0.2	10.3	6.3	16.1
2003	4.7	0.3	9.3	5.4	15.0
2004	5.4	0.2	10.8	6.0	17.8
2005	4.5	0.2	8.8	4.8	14.7
2006	4.4	0.3	8.7	4.8	14.8
FETAL LOSSES					
1996	0.3	0.0	0.6	0.3	0.9
1997	0.4	0.0	0.7	0.6	1.0
1998	0.3	0.0	0.6	0.4	1.0
1999	0.3	0.0	0.5	0.3	0.8
2000	0.3	0.0	0.6	0.5	0.8
2001	0.3	0.0	0.6	0.4	0.8
2002	0.3	0.0	0.5	0.4	0.8
2003	0.2	0.0	0.4	0.3	0.7
2004	0.2	0.0	0.4	0.2	0.7
2005	0.2	0.0	0.4	0.2	0.5
2006	0.2	0.0	0.4	0.2	0.6

¹ The number of pregnancies (live births + abortions + fetal deaths) per 1,000 females in specified age group.
0.0: Quantity more than zero but less than 0.05.

**TABLE 3
LIVE BIRTHS TO FEMALES 19 OR YOUNGER BY AGE GROUP, RACE/ETHNICITY
AND YEAR, ARIZONA, 1996-2006**

Race/ethnic group and year	Total, females 19 years or younger	Under 15 years	15-19 years		
			Total	15-17 years	18-19 years
WHITE NON-HISPANIC					
1996	4,033	40	3,993	1,368	2,625
1997	3,733	27	3,706	1,239	2,467
1998	3,843	38	3,805	1,261	2,544
1999	3,869	31	3,838	1,115	2,723
2000	3,759	38	3,721	1,040	2,681
2001	3,396	34	3,362	926	2,436
2002	3,064	23	3,041	824	2,217
2003	2,970	23	2,947	782	2,165
2004	2,806	17	2,789	747	2,042
2005	2,744	17	2,727	711	2,016
2006	3,209	19	3,190	852	2,338
HISPANIC OR LATINO					
1996	5,628	132	5,496	2,308	3,188
1997	5,736	146	5,590	2,329	3,261
1998	5,951	142	5,809	2,419	3,390
1999	6,161	149	6,012	2,415	3,597
2000	6,548	144	6,404	2,567	3,837
2001	6,648	132	6,516	2,552	3,964
2002	6,585	147	6,438	2,507	3,931
2003	6,792	146	6,646	2,600	4,046
2004	7,138	137	7,001	2,779	4,222
2005	7,188	137	7,051	2,721	4,330
2006	7,738	123	7,615	2,923	4,692
BLACK OR AFRICAN AMERICAN					
1996	498	10	488	220	268
1997	519	13	506	207	299
1998	586	16	570	223	347
1999	603	14	589	222	367
2000	572	12	560	198	362
2001	545	13	532	193	339
2002	468	12	456	152	304
2003	549	3	546	204	342
2004	540	12	528	180	348
2005	569	8	561	199	362
2006	601	7	594	187	407
AMERICAN INDIAN OR ALASKA NATIVE					
1996	996	28	968	401	567
1997	971	25	946	407	539
1998	1,122	31	1,091	429	662
1999	1,050	38	1,012	389	623
2000	1,089	20	1,069	405	664
2001	1,013	17	996	348	648
2002	1,039	18	1,021	374	647
2003	1,141	37	1,104	434	670
2004	1,142	21	1,121	452	669
2005	1,204	21	1,183	478	705
2006	1,216	19	1,197	430	767
ASIAN OR PACIFIC ISLANDER					
1996	76	3	73	36	37
1997	66	1	65	17	48
1998	73	1	72	17	55
1999	108	1	107	28	79
2000	100	1	99	29	70
2001	104	0	104	29	75
2002	96	1	95	19	76
2003	107	1	106	38	68
2004	92	1	91	25	66
2005	96	1	95	28	67
2006	92	1	91	28	63

**TABLE 4
ABORTIONS TO FEMALES 19 OR YOUNGER BY AGE GROUP, RACE/ETHNICITY
AND YEAR, ARIZONA, 1996-2006**

Race/ethnic group and year	Total, females 19 years or younger	Under 15 years	15-19 years		
			Total	15-17 years	18-19 years
WHITE NON-HISPANIC					
1996	1,148	27	1,121	478	643
1997	1,179	29	1,150	433	717
1998	1,480	38	1,442	563	879
1999	981	26	955	369	586
2000	1,020	25	995	342	653
2001	746	16	730	262	458
2002	1,010	20	990	367	623
2003	914	18	896	304	592
2004	1,095	19	1,076	341	735
2005	867	15	852	278	574
2006	917	28	889	296	593
HISPANIC OR LATINO					
1996	562	23	539	218	321
1997	642	21	621	240	381
1998	747	29	718	292	426
1999	540	16	524	183	341
2000	610	22	588	228	360
2001	534	22	512	199	313
2002	650	15	635	235	400
2003	630	27	603	197	406
2004	784	20	764	247	517
2005	522	21	501	151	350
2006	609	24	585	193	392
BLACK OR AFRICAN AMERICAN					
1996	105	6	99	44	55
1997	107	0	107	40	67
1998	147	4	143	51	92
1999	96	7	89	27	62
2000	115	5	110	42	68
2001	71	3	68	28	40
2002	118	4	114	30	84
2003	107	6	101	40	61
2004	125	1	124	46	78
2005	114	5	109	32	77
2006	124	9	115	48	67
AMERICAN INDIAN OR ALASKA NATIVE					
1996	54	4	40	18	32
1997	58	2	56	17	39
1998	53	0	53	22	31
1999	56	3	53	17	36
2000	43	2	41	13	28
2001	29	3	26	7	19
2002	40	3	37	12	25
2003	68	3	65	25	40
2004	65	1	64	17	47
2005	76	4	72	21	51
2006	55	1	54	24	30
ASIAN OR PACIFIC ISLANDER					
1996	37	1	36	9	27
1997	42	0	42	19	23
1998	51	0	51	20	31
1999	28	1	27	10	17
2000	37	0	37	11	26
2001	30	0	30	15	15
2002	34	0	34	10	24
2003	27	1	26	7	19
2004	56	1	55	19	36
2005	35	0	35	10	25
2006	40	3	37	11	26

TABLE 5
NUMBER OF PREGNANCIES¹ BY PREGNANCY OUTCOME, RACE/ETHNICITY AND YEAR
AMONG FEMALES 17 OR YOUNGER WITH RATES², ARIZONA, 1996-2006

Race/ethnicity Pregnancy outcome	1996	1997	1998	1999	2000	2001	2002	2003	2004	2005	2006	2006 Rates
WHITE³ NON-HISPANIC, total:	1,937	1,760	1,918	1,566	1,462	1,250	1,245	1,131	1,129	1,028	1,204	6.8
Births	1,408	1,266	1,299	1,146	1,078	960	847	805	764	728	871	4.9
Abortions	505	462	601	395	367	278	387	322	360	293	324	1.8
HISPANIC OR LATINO, total:	2,681	2,736	2,882	2,763	2,991	2,930	2,926	2,993	3,198	3,043	3,281	26.7
Births	2,440	2,475	2,561	2,564	2,711	2,684	2,654	2,746	2,916	2,858	3,046	24.8
Abortions	241	261	321	199	250	221	250	224	267	172	217	1.8
BLACK OR AFRICAN AMERICAN, total:	289	242	263	275	227	240	207	256	241	247	255	13.9
Births	230	220	239	236	210	206	164	207	192	207	194	10.5
Abortions	50	40	55	34	47	31	34	46	47	37	57	3.1
AMERICAN INDIAN OR ALASKA NATIVE, total:	453	489	530	450	476	384	409	501	495	530	477	16.7
Births	429	432	460	427	425	365	392	471	473	499	449	15.7
Abortions	22	19	22	20	15	10	15	28	18	25	25	0.9
ASIAN OR PACIFIC ISLANDER, total:	54	38	43	40	41	44	30	47	46	39	43	5.2
Births	39	18	18	29	30	29	20	39	26	29	29	3.5
Abortions	10	19	20	11	11	15	10	8	20	10	14	1.7
ALL RACE/ETHNIC GROUPS⁴, total:	5,555	5,374	5,798	5,296	5,294	4,914	4,951	5,027	5,188	5,029	5,347	15.1
Births	4,556	4,433	4,631	4,474	4,500	4,278	4,158	4,321	4,415	4,364	4,620	13.0
Abortions	964	882	1,124	787	741	586	749	674	747	636	693	2.0
Pregnancy rate, total:	23.1	22.0	22.7	19.9	18.4	16.5	16.1	15.9	15.9	14.8	15.1	
Fertility rate⁵	18.9	18.2	18.1	16.8	15.6	14.3	13.5	13.7	13.5	12.9	13.0	
Abortion rate	4.0	3.5	4.4	3.0	2.6	2.0	2.4	2.1	2.3	1.9	2.0	

¹Fetal deaths are included in the total counts of pregnancies.

²All rates per 1,000 females 10-17 years old.

³Not of Hispanic origin.

⁴Includes other and unspecified ethnicity.

⁵Number of births per 1,000 females 10-17 years old.

TABLE 6
NUMBER OF PREGNANCIES¹ BY PREGNANCY OUTCOME, RACE/ETHNICITY AND YEAR
AMONG FEMALES 15-17 YEARS OLD WITH RATES², ARIZONA, 1996-2006

Race/ethnicity	1996	1997	1998	1999	2000	2001	2002	2003	2004	2005	2006	2006 Rates
WHITE³ NON-HISPANIC,												
total:	1,867	1,699	1,841	1,505	1,397	1,197	1,202	1,090	1,093	996	1,157	17.2
Births	1,368	1,239	1,261	1,115	1,040	926	824	782	747	711	852	12.7
Abortions	478	433	563	369	342	262	367	304	341	278	296	4.4
HISPANIC OR LATINO,												
total:	2,526	2,569	2,711	2,598	2,823	2,771	2,761	2,819	3,040	2,885	3,131	72.7
Births	2,308	2,329	2,419	2,415	2,567	2,552	2,507	2,600	2,779	2,721	2,923	67.8
Abortions	218	240	292	183	228	199	235	197	247	151	193	4.5
BLACK OR AFRICAN AMERICAN, total:	271	250	276	254	242	224	189	247	228	234	239	36.1
Births	220	207	223	222	198	193	152	204	180	199	187	28.3
Abortions	44	40	51	27	42	28	30	40	46	32	48	7.3
AMERICAN INDIAN OR ALASKA NATIVE, total:	421	439	464	408	421	363	388	461	473	505	457	41.5
Births	401	407	429	389	405	348	374	434	452	478	430	39.1
Abortions	18	17	22	17	13	7	12	25	17	21	24	2.2
ASIAN OR PACIFIC ISLANDER, total:	50	37	42	38	40	44	29	45	44	38	39	13.0
Births	36	17	17	28	29	29	19	38	25	28	28	9.3
Abortions	9	19	20	10	11	15	10	7	19	10	11	3.7
ALL RACE/ETHNIC GROUPS⁴, total:	5,262	5,096	5,482	4,993	5,016	4,661	4,696	4,755	4,955	4,790	5,105	39.0
Births	4,340	4,219	4,397	4,236	4,284	4,080	3,952	4,110	4,227	4,179	4,450	34.0
Abortions	892	826	1,046	727	684	540	705	614	703	582	624	4.8
Pregnancy rate, total:	59.4	55.7	58.6	51.5	48.1	43.2	42.2	41.6	42.0	39.1	39.0	
Fertility rate⁵	49.0	46.1	47.0	43.7	41.1	37.8	35.5	35.9	35.8	34.1	34.0	
Abortion rate	10.1	9.0	11.2	7.5	6.6	5.0	6.3	5.4	6.0	4.8	4.8	

¹Fetal deaths are included in the total counts of pregnancies.

²All rates per 1,000 females 15-17 years old.

³Not of Hispanic origin.

⁴Includes other and unspecified ethnicity.

⁵Number of births per 1,000 females 15-17 years old.

TABLE 7
NUMBER OF PREGNANCIES¹ BY PREGNANCY OUTCOME, RACE/ETHNICITY AND YEAR
AMONG FEMALES 18-19 YEARS OLD WITH RATES², ARIZONA, 1996-2006

Race/ethnicity	1996	1997	1998	1999	2000	2001	2002	2003	2004	2005	2006	2006 Rates
Pregnancy outcome												
WHITE³ NON-HISPANIC, total:	3,312	3,218	3,457	3,349	3,352	2,925	2,857	2,772	2,795	2,603	2,944	68.6
Births	2,625	2,467	2,544	2,723	2,681	2,436	2,217	2,165	2,042	2,016	2,338	54.5
Abortions	643	717	879	586	653	468	623	592	735	574	593	13.8
HISPANIC OR LATINO, total:	3,509	3,642	3,816	3,938	4,222	4,309	4,361	4,483	4,767	4,705	5,115	188.1
Births	3,188	3,261	3,390	3,597	3,837	3,964	3,931	4,046	4,222	4,330	4,692	172.6
Abortions	321	381	426	341	360	313	400	406	517	350	392	14.4
BLACK OR AFRICAN AMERICAN, total:	328	368	442	434	433	382	398	408	430	441	476	118.1
Births	268	299	347	367	362	339	304	342	348	362	407	101.0
Abortions	55	67	92	62	68	40	84	61	78	77	67	16.6
AMERICAN INDIAN OR ALASKA NATIVE, total:	603	600	710	665	700	669	673	714	720	759	800	119.8
Births	567	539	662	623	664	648	647	670	669	705	767	114.9
Abortions	32	39	31	36	28	19	25	40	47	51	30	4.5
ASIAN OR PACIFIC ISLANDER, total:	64	72	86	96	96	90	100	87	102	93	89	45.0
Births	37	48	55	79	70	75	76	68	66	67	63	31.9
Abortions	27	23	31	17	26	15	24	19	36	25	26	13.1
ALL RACE/ETHNIC GROUPS⁴, total:	7,966	8,064	8,734	8,799	8,993	8,515	8,621	8,627	8,975	8,869	9,571	115.6
Births	6,691	6,652	7,064	7,489	7,689	7,512	7,316	7,379	7,448	7,569	8,296	100.2
Abortions	1,222	1,351	1,611	1,259	1,247	942	1,246	1,193	1,473	1,256	1,226	14.8
Pregnancy rate, total:	141.6	139.3	142.1	137.6	123.6	113.2	111.2	108.2	108.7	103.6	115.6	
Fertility rate⁵	119	114.9	114.9	117.1	105.7	99.9	94.3	92.5	90.2	88.4	100.2	
Abortion rate	21.7	23.3	26.2	19.7	17.1	12.5	16.1	15.0	17.8	14.7	14.8	

¹Fetal deaths are included in the total count of pregnancies.

²All rates per 1,000 females 18-19 years old.

³Not of Hispanic origin.

⁴Includes other and unspecified ethnicity.

⁵Number of births per 1,000 females 18-19 years old.

**TABLE 8
NUMBER OF PREGNANCIES¹ BY PREGNANCY OUTCOME, RACE/ETHNICITY AND YEAR
AMONG FEMALES 19 OR YOUNGER, WITH RATES², ARIZONA, 1996-2006**

Race/ethnicity Pregnancy outcome	1996	1997	1998	1999	2000	2001	2002	2003	2004	2005	2006	2006 Rates
WHITE³ NON-HISPANIC, total:	5,249	4,978	5,375	4,915	4,814	4,175	4,102	3,903	3,924	3,631	4,148	18.9
Births	4,033	3,733	3,843	3,869	3,759	3,396	3,064	2,970	2,806	2,744	3,209	14.6
Abortions	1,148	1,179	1,480	981	1,020	746	1,010	914	1,095	867	917	4.2
HISPANIC OR LATINO, total:	6,190	6,378	6,698	6,701	7,213	7,239	7,287	7,476	7,965	7,748	8,396	56.0
Births	5,628	5,736	5,951	6,161	6,548	6,648	6,585	6,792	7,138	7,188	7,738	51.6
Abortions	562	642	747	540	610	534	650	630	784	522	609	4.1
BLACK OR AFRICAN AMERICAN, total:	617	582	644	669	620	622	605	664	671	688	731	32.6
Births	498	519	586	603	572	545	468	549	540	569	601	26.8
Abortions	105	107	147	96	115	71	118	107	125	114	124	5.5
AMERICAN INDIAN OR ALASKA NATIVE, total:	1,056	1,117	1,301	1,155	1,216	1,053	1,082	1,215	1,215	1,289	1,277	36.2
Births	996	971	1,122	1,050	1,089	1,013	1,039	1,141	1,142	1,204	1,216	34.5
Abortions	54	58	53	56	43	29	40	68	65	76	55	1.6
ASIAN OR PACIFIC ISLANDER, total:	118	110	129	136	137	134	130	134	148	132	132	12.9
Births	76	66	73	108	100	104	96	107	92	96	92	9.0
Abortions	37	42	51	28	37	30	34	27	56	35	40	3.9
ALL RACE/ETHNIC GROUPS⁴, total:	13,521	13,438	14,532	14,095	14,287	13,429	13,572	13,654	14,163	13,898	14,918	34.1
Births	11,247	11,085	11,695	11,963	12,189	11,790	11,474	11,700	11,863	11,933	12,916	29.6
Abortions	2,186	2,233	2,735	2,046	1,988	1,528	1,995	1,867	2,220	1,892	1,919	4.4
Pregnancy rate, total:	45.4	43.8	45.8	42.7	39.5	36.0	35.2	34.5	34.6	32.7	34.1	
Fertility rate⁵	37.8	36.1	36.9	36.2	33.7	31.6	29.8	29.5	29.0	28.1	29.6	
Abortion rate	7.4	7.3	8.6	6.2	5.5	4.1	5.2	4.7	5.4	4.5	4.4	

¹Fetal deaths are included in the total counts of pregnancies.

²All rates per 1,000 females 19 or less years old.

³Not of Hispanic origin.

⁴Includes other and unspecified ethnicity.

⁵Number of births per 1,000 females 19 or less years old.

TABLE 9
TRENDS IN PREGNANCY RATES* BY COUNTY OF RESIDENCE AMONG FEMALES 10-17 AND 18-19 YEARS,
ARIZONA, 1996-2006

	ARIZONA	APACHE	COCHISE	COCONINO	GILA	GRAHAM	GREENLEE	MARICOPA	MOHAVE	NAVAJO	PIMA	PINAL	SANTA CRUZ	YAVAPAI	YUMA	LA PAZ	
19 YEARS OR YOUNGER	1996	45.4	29.6	37.5	39.7	42.4	40.1	53.6	47.1	44.2	37.0	44.3	47.9	42.3	34.9	50.1	29.8
	1997	43.8	30.4	39.8	31.7	45.0	41.3	46.1	44.6	42.6	37.4	43.1	46.8	43.1	32.4	48.6	44.1
	1998	45.8	30.2	36.2	28.0	45.4	36.3	43.3	46.9	40.1	41.9	43.1	49.4	48.3	37.0	46.6	39.2
	1999	42.7	23.9	35.6	30.2	41.4	29.3	34.9	44.6	40.1	40.4	38.8	44.9	41.7	33.7	46.3	29.2
	2000	39.5	29.2	38.7	28.6	41.1	28.8	26.7	40.7	33.5	34.8	39.6	47.7	39.3	33.0	42.0	32.6
	2001	36.0	21.6	34.3	30.3	43.2	33.8	18.3	37.2	31.4	26.7	36.0	43.7	33.0	26.3	36.7	36.8
	2002	35.2	23.2	30.6	26.0	42.4	29.9	40.0	36.0	32.5	28.5	36.3	38.5	36.4	29.6	38.8	35.6
2003	34.5	30.8	31.5	26.9	42.8	27.5	26.0	36.0	30.9	29.6	32.0	38.1	30.0	25.3	40.6	32.2	
2004	34.6	32.8	30.0	27.7	38.4	22.5	36.6	35.5	28.7	33.7	33.8	36.4	38.6	27.9	42.1	39.8	
2005	32.7	25.9	30.0	27.7	38.8	20.9	31.0	33.9	32.1	33.1	30.6	33.5	30.7	25.7	37.0	49.8	
2006	34.1	25.6	24.2	31.0	37.7	35.5	24.7	35.4	33.0	30.0	32.9	34.1	32.9	29.6	38.0	30.0	
18-19 YEARS	1996	141.6	107.2	114.8	112.7	143.8	131.8	189.4	146.8	146.8	130.3	134.6	147.6	135.7	120.1	157.1	91.4
	1997	139.3	98.8	155.6	91.8	154.5	120.4	192.6	143.0	156.3	124.5	133.3	152.1	122.6	103.5	168.4	144.9
	1998	142.1	105.7	115.5	77.6	130.5	111.1	94.0	148.0	139.1	138.0	123.8	159.9	136.9	111.7	156.6	135.7
	1999	137.6	88.3	115.5	78.9	121.0	94.8	116.1	146.5	139.4	141.7	118.3	145.9	145.2	114.8	151.7	72.7
	2000	135.8	109.9	124.5	74.7	167.3	74.1	123.8	127.8	139.7	154.1	104.7	161.0	132.1	124.9	149.8	127.1
	2001	113.2	91.9	116.8	84.3	154.3	84.9	78.4	117.3	132.5	111.7	96.6	156.9	113.7	91.8	130.8	153.0
	2002	111.1	100.7	104.4	68.9	151.5	78.4	161.9	114.2	131.5	121.5	96.7	130.2	137.7	115.9	133.4	127.0
2003	108.2	130.1	107.3	70.6	145.5	78.8	64.8	112.4	129.0	123.4	86.0	139.3	130.7	98.7	134.2	113.4	
2004	108.7	141.6	106.7	76.9	164.3	57.7	173.1	110.9	112.8	141.3	93.7	121.0	147.2	99.3	135.6	153.8	
2005	103.6	105.4	110.0	79.5	150.5	56.7	174.8	106.5	134.0	138.2	83.7	119.8	111.8	104.1	122.2	148.7	
2006	115.6	87.9	71.1	84.0	139.8	95.6	69.0	125.0	142.1	99.4	95.8	129.3	108.5	109.2	122.8	63.0	
10-17 YEARS	1996	23.0	12.7	19.7	18.9	20.1	16.9	26.8	24.0	22.1	16.9	21.8	27.2	21.7	15.8	26.8	15.5
	1997	22.0	15.7	19.2	14.1	30.4	22.5	16.5	22.4	18.5	18.3	20.4	24.7	23.8	16.2	23.5	21.6
	1998	22.7	13.7	16.9	12.8	24.8	19.4	31.9	23.0	18.1	20.9	22.0	25.6	26.4	19.2	22.9	13.0
	1999	19.9	9.6	15.8	15.1	22.1	13.7	16.3	21.0	17.4	17.9	17.6	22.3	17.1	13.8	20.9	18.6
	2000	18.4	15.0	19.1	14.6	17.6	13.9	8.8	18.9	12.0	13.7	19.1	23.8	21.8	13.3	17.5	15.2
	2001	16.5	9.2	15.5	13.9	22.5	17.0	7.2	17.2	10.9	11.7	16.9	19.8	17.8	12.3	15.3	15.2
	2002	16.1	9.6	13.7	13.0	22.1	14.0	17.5	16.5	12.5	12.0	17.2	19.1	17.2	11.1	17.3	18.7
2003	15.9	13.4	14.3	13.6	23.7	10.7	18.8	16.9	11.1	13.0	14.6	16.8	11.1	9.5	19.3	17.2	
2004	15.9	13.5	12.7	12.9	15.4	10.9	10.9	16.5	11.8	14.6	15.1	18.3	17.9	12.3	20.4	17.8	
2005	14.8	11.9	11.7	12.1	18.2	9.0	6.6	15.7	11.5	14.4	14.0	14.9	15.2	8.6	17.1	30.7	
2006	15.1	10.8	12.0	14.1	16.6	17.6	5.1	15.7	12.4	14.9	14.7	13.4	16.5	11.8	16.6	13.1	

* Number of pregnancies per 1,000 females in specified group.

TABLE 10
LIVE BIRTHS TO FEMALES 19 OR YOUNGER AS A PERCENTAGE OF TOTAL LIVE BIRTHS BY AREA, RACE/ETHNICITY
AND YEAR, ARIZONA, 1996-2006

Group	1996	1997	1998	1999	2000	2001	2002	2003	2004	2005	2006
ARIZONA, TOTAL¹											
# Births (all ages)	75,094	75,563	77,940	80,505	84,985	85,213	87,379	90,783	93,396	95,798	102,042
# Births to teenagers	11,247	11,085	11,695	11,963	12,189	11,790	11,474	11,700	11,863	11,933	12,916
% Births to teenagers	15.0	14.7	15.0	14.9	14.3	13.8	13.1	12.9	12.7	12.5	12.7
URBAN COUNTIES²											
# Births (all ages)	62,879	63,510	65,825	68,611	72,596	73,319	74,851	77,905	79,951	82,141	87,894
# Births to teenagers	9,234	9	9,605	9,896	10,102	9,906	9,512	9,686	9,786	9,827	10,807
% Births to teenagers	14.7	14.3	14.6	14.4	13.9	13.5	12.7	12.4	12.2	12.0	12.3
RURAL COUNTIES											
# Births (all ages)	12,215	12,053	12,115	11,877	12,333	11,851	12,498	12,848	13,409	13,603	14,083
# Births to teenagers	2,009	2,009	2,090	2,067	2,083	1,882	1,959	2,014	2,074	2,103	2,099
% Births to teenagers	16.6	16.6	17.0	17.4	16.9	15.9	15.7	15.7	15.5	15.5	14.9
WHITE NON-HISPANIC											
# Births (all ages)	38,494	37,869	38,611	38,711	39,850	38,934	38,819	38,842	39,271	39,657	43,013
# Births to teenagers	4,033	3,733	3,843	3,869	3,759	3,396	3,064	2,970	2,806	2,744	3,209
% Births to teenagers	10.6	9.9	10.0	10.0	9.4	8.7	7.9	7.6	7.2	6.9	7.5
HISPANIC OR LATINO											
# Births (all ages)	27,396	27,941	28,824	30,784	33,893	35,103	36,089	39,101	40,822	42,156	44,862
# Births to teenagers	5,628	5,736	5,951	6,161	6,548	6,648	6,585	6,792	7,138	7,188	7,738
% Births to teenagers	20.5	20.6	20.7	20.0	19.3	18.9	18.2	17.4	17.5	17.0	17.2
BLACK OR AFRICAN AMERICAN											
# Births (all ages)	2,336	2,485	2,629	2,699	2,760	2,736	2,753	3,022	3,216	3,450	3,864
# Births to teenagers	498	519	586	603	572	545	468	549	540	569	601
% Births to teenagers	21.3	21.2	22.4	22.3	20.7	19.9	17.0	18.2	16.8	16.5	15.6
AMERICAN INDIAN OR ALASKA NATIVE											
# Births (all ages)	5,328	5,271	5,460	5,295	5,602	5,340	5,545	5,881	6,120	6,293	6,364
# Births to teenagers	996	971	1,122	1,050	1,089	1,013	1,039	1,141	1,142	1,204	1,216
% Births to teenagers	18.6	18.4	20.3	19.8	19.4	19.0	18.7	19.4	18.9	19.1	19.1
ASIAN OR PACIFIC ISLANDER											
# Births (all ages)	1,427	1,602	1,747	1,875	2,041	2,104	2,281	2,524	2,614	2,805	3,136
# Births to teenagers	76	66	73	92	100	104	96	107	92	96	92
% Births to teenagers	5.3	4.1	4.2	5.8	4.9	4.9	4.2	4.2	3.5	3.4	2.9

¹ Includes records for ethnic groups other than White Non-Hispanic, Hispanic or Latino, Black or African American, American Indian or Alaska Native or Asian or Pacific Islander

² Urban = Maricopa, Pima, Pinal, and Yuma. The remaining counties comprise Arizona's rural areas.

**TABLE 11
BIRTH RATES BY AGE GROUP FOR FEMALES 19 OR YOUNGER,
ARIZONA AND UNITED STATES, 1996-2006**

Year	Under 15 Years		15 - 19 Years Old					
			Total		15-17 Years		18-19 Years	
	AZ	U.S.	AZ	U.S.	AZ	U.S.	AZ	U.S.
1996	1.4	1.2	76.1	54.4	49.0	33.8	119.0	86.0
1997	1.4	1.1	72.8	52.3	46.1	32.1	114.9	83.6
1998	1.4	1.0	73.9	51.1	47.0	30.4	114.9	82.0
1999	1.4	0.9	72.9	49.6	43.7	28.7	117.1	80.3
2000	1.2	0.9	67.6	48.5	41.1	27.4	105.7	78.1
2001	1.0	0.8	63.3	45.3	37.8	24.7	99.9	76.1
2002	1.0	0.7	59.7	43.0	35.5	23.2	94.3	72.7
2003	1.0	0.6	59.2	41.6	35.9	22.4	92.5	70.7
2004	0.9	0.7	58.2	41.1	35.8	22.1	90.2	70.0
2005	0.9	0.7	56.5	40.4	34.1	21.4	88.4	69.9
2006	0.8	NA	59.6	NA	34.0	NA	100.2	NA

Note: The U.S. data is from the National Vital Statistics reports published by the National Center for Health Statistics.

**TABLE 12
REPEAT PREGNANCIES AMONG TEENAGE MOTHERS GIVING BIRTH BY AGE AND YEAR, ARIZONA, 1996-2006**

Mother's age	Pregnancies	Year													
		1996	1997	1998	1999	2000	2001	2002	2003	2004	2005	2006			
11	Total	1	1	0	0	0	0	1	1	0	0	0	0	0	0
	Previous pregnancies	1	1	0	0	0	0	1	1	0	0	0	0	0	0
	One or more Unknown	0	0	0	0	0	0	0	0	0	0	0	0	0	0
12	Total	3	4	5	2	4	3	5	3	3	3	3	3	3	2
	Previous pregnancies	3	4	4	2	4	3	5	3	3	3	2	2	2	2
	One or more Unknown	0	0	1	0	0	0	0	0	0	0	0	1	0	0
13	Total	34	33	34	36	37	28	22	26	31	22	22	25	25	25
	Previous pregnancies	32	33	33	36	35	28	21	25	30	22	22	25	25	25
	One or more Unknown	2	0	1	0	2	0	0	1	1	1	0	0	0	0
14	Total	178	176	195	200	175	167	178	181	154	160	143	143	140	140
	Previous pregnancies	174	165	186	189	172	157	167	176	151	155	140	140	140	140
	One or more Unknown	4	11	9	11	3	10	11	5	3	5	3	3	3	3
15	Total	658	598	651	595	647	620	512	587	566	603	593	593	558	558
	Previous pregnancies	613	553	597	559	604	569	470	551	538	559	558	558	558	558
	One or more Unknown	45	41	51	35	36	49	41	36	25	44	35	35	35	35
16	Total	1,434	1,363	1,443	1,388	1,376	1,353	1,336	1,314	1,389	1,317	1,448	1,448	1,290	1,290
	Previous pregnancies	1,239	1,175	1,261	1,207	1,205	1,171	1,169	1,144	1,228	1,167	1,290	1,290	1,290	1,290
	One or more Unknown	195	182	175	177	163	176	166	168	159	150	158	158	158	158
17	Total	2,248	2,258	2,303	2,253	2,261	2,107	2,104	2,209	2,272	2,259	2,409	2,409	2,409	2,409
	Previous pregnancies	1,778	1,729	1,831	1,772	1,806	1,634	1,658	1,729	1,838	1,791	1,905	1,905	1,905	1,905
	One or more Unknown	470	516	463	475	447	464	437	475	427	468	502	502	502	502
18	Total	2,926	2,902	3,153	3,300	3,338	3,168	3,208	3,211	3,208	3,351	3,523	3,523	3,523	3,523
	Previous pregnancies	2,032	1,951	2,138	2,247	2,313	2,161	2,231	2,209	2,250	2,411	2,519	2,519	2,519	2,519
	One or more Unknown	894	939	1,002	1,041	1,014	988	967	996	954	940	1,004	1,004	1,004	1,004
19	Total	3,765	3,750	3,911	4,189	4,351	4,344	4,108	4,168	4,240	4,218	4,773	4,773	4,773	4,773
	Previous pregnancies	2,194	2,180	2,284	2,485	2,627	2,597	2,496	2,592	2,556	2,631	2,961	2,961	2,961	2,961
	One or more Unknown	1,571	1,554	1,606	1,680	1,706	1,735	1,595	1,567	1,681	1,586	1,812	1,812	1,812	1,812
		0	16	21	24	18	12	17	9	3	1	0	0	0	

TABLE 13
CUMULATIVE NUMBER OF MOTHERS WHO WERE 19 OR YOUNGER IN ARIZONA IN 2006

Year Baby Was Born	MOTHER'S AGE WHEN BABY WAS BORN										Mother was 19 or younger in 2006	
	10	11	12	13	14	15	16	17	18	19		
1997	0											0
1998	0	0										0
1999	0	0	2									2
2000	0	0	4	37								41
2001	0	0	3	28	167							198
2002	0	1	5	22	178	512						718
2003	0	1	3	26	181	587	1,314					2,112
2004	0	0	3	31	154	566	1,389	2,272				4,415
2005	0	0	3	22	160	603	1,317	2,259	3,351			7,715
2006	0	0	2	25	143	593	1,448	2,409	3,523	4,773		12,916
Cumulative number of mothers 19 or younger	0	2	25	191	983	2,861	5,468	6,940	6,874	4,773		28,117

NOTE: The above table focuses on the 2006 cohort of Arizona mothers who were 19 or younger that year.

Among them are those who:

gave birth to the 12,916 babies in 2006.

gave birth to a baby prior to 2006 and were still 19 or less years old in 2006.

The numbers below the main diagonal (and below the stair-like line) represent the number of mothers meeting either one of the above criteria. The last column to the right gives the cumulative total for 2006 by the year the baby was born. For example, from among those girls and adolescents who had their baby in 1999, 2 remained in their teens in 2006. The bottom row gives the cumulative total by mother's age when the baby was born. For example, among the 28,117 mothers under 20 in Arizona in 2006, 191 had given birth when 13 years old.

Excluded from the cumulative totals and not shown above the main diagonal (and above stair-like line) are the number of mothers who were 19 years old when the baby was born, but who were no longer under the age 20 by 2006. For example, mothers who were 13 years old in 1998 were 21 years old in 2006.

The figures in Table 26 are unadjusted for in-and-out migration, as well as mortality of mothers, in the period of 1996-2006. For simplicity, the number of mothers = the number of babies (i.e., no adjustment was made for multiple birth events).

TABLE 14
TRENDS IN TEEN PREGNANCY RATES BY RACE/ETHNICITY AND AGE GROUP
(INCLUDING REVISED* RATES FOR 1996-1999), ARIZONA, 1996-2006

		All 19 years or younger	10-14 years	15-19 years	15-17 years	18-19 years
White non-Hispanic	1996	29.4	0.8	59.2	35.4	95.4
	1997	27.5	0.7	54.3	31.1	89.3
	1998	28.8	0.8	56.5	32.9	91.2
	1999	25.6	0.6	50.6	26.6	84.8
	2000	25.2	0.7	49.9	25.1	85.0
	2001	21.1	0.5	41.9	20.8	71.0
	2002	20.1	0.4	40.0	20.2	67.9
	2003	18.2	0.4	36.3	17.5	62.9
	2004	17.7	0.3	35.3	16.9	61.2
	2005	15.8	0.3	31.6	14.9	55.1
2006	18.9	0.4	37.2	17.2	68.6	
Hispanic or Latino	1996	69.6	3.5	136.0	95.7	195.0
	1997	68.2	3.6	131.8	92.2	189.2
	1998	67.1	3.4	131.1	93.0	185.0
	1999	63.0	3.1	125.0	85.5	179.9
	2000	60.9	2.7	123.0	84.0	178.4
	2001	59.1	2.5	119.5	79.7	176.0
	2002	57.6	2.5	116.6	77.0	172.8
	2003	57.5	2.6	116.2	76.5	172.7
	2004	59.2	2.3	120.1	79.7	177.4
	2005	55.5	2.2	112.5	72.9	168.9
2006	56.0	1.9	117.3	72.7	188.1	
Black or African American	1996	46.0	2.6	93.9	69.4	132.4
	1997	45.8	1.8	93.9	62.0	144.4
	1998	50.3	2.6	101.3	65.2	154.7
	1999	45.8	2.6	93.6	57.8	146.9
	2000	51.9	2.4	107.3	64.2	171.7
	2001	45.1	2.2	93.1	57.5	146.0
	2002	42.5	2.4	87.5	47.0	148.0
	2003	45.4	1.2	94.9	59.8	147.5
	2004	44.2	1.6	91.8	53.0	149.8
	2005	43.5	1.6	89.0	51.6	144.8
2006	32.6	1.4	67.2	36.1	118.1	
American Indian or Alaska Native	1996	39.5	2.2	83.4	53.5	136.7
	1997	38.9	2.0	80.8	54.1	126.4
	1998	42.5	2.2	87.4	55.3	141.0
	1999	38.0	2.7	78.0	47.6	128.2
	2000	41.3	1.6	86.7	52.1	144.4
	2001	36.7	1.4	77.2	43.5	133.0
	2002	36.6	1.3	77.0	45.1	130.1
	2003	39.9	2.5	82.9	52.0	134.2
	2004	39.7	1.4	83.6	53.2	134.2
	2005	40.8	1.5	85.8	55.0	137.0
2006	36.2	1.1	71.1	41.5	119.8	
Asian or Pacific Islander	1996	17.8	1.2	34.2	26.0	45.3
	1997	18.3	0.6	35.5	20.4	55.7
	1998	18.5	0.6	35.0	23.1	50.7
	1999	17.8	0.5	33.6	17.0	54.6
	2000	21.3	0.3	39.8	21.4	62.4
	2001	20.3	0.0	38.2	22.8	57.0
	2002	19.1	0.3	35.7	14.6	61.6
	2003	19.2	0.2	35.5	22.0	52.1
	2004	19.3	0.6	36.2	20.2	55.0
	2005	16.2	0.3	30.4	16.2	47.6
2006	12.9	0.8	25.7	13.0	45.0	

*The pregnancy rates for 1996-1999 were revised using the population denominators that are consistent with the 2000 census. The populations estimated previously from the 1990 census underestimated the growth of the Hispanic population during the 1990s. According to the 2000 census, there were 118,490 Hispanic females 19 years or younger in Arizona, 37.5 percent more than the estimated number of 86,203 in 1999. The revised rates differ from those previously published for 1996-1999.

**TABLE 15
TRENDS IN SEXUALLY TRANSMITTED INFECTIONS BY AGE GROUP AND YEAR AMONG FEMALES 10-19 YEARS,
ARIZONA, 1996-2006**

	1996	1997	1998	1999	2000	2001	2002	2003	2004	2005	2006
Diagnosed with:											
10-14 years old											
Gonorrhea	51	34	32	36	32	37	22	31	36	40	40
Chlamydia	192	171	194	213	207	223	191	169	188	210	224
Early syphilis	0	2	0	2	2	2	0	0	0	0	0
Genital herpes	NA	5	6	3	6	7	2	2	5	5	7
Gave birth that year	1	0	0	0	0	0	0	0	0	0	0
Total reported infections	243	212	232	254	247	269	215	202	229	255	271
Diagnosed with:											
15-19 years old											
Gonorrhea	574	522	551	588	565	535	469	503	538	721	804
Chlamydia	3,357	3,472	3,624	3,753	3,726	4,046	4,024	3,475	4,400	5,451	6,188
Early syphilis	18	13	15	18	22	24	23	25	19	13	16
Genital herpes	NA	176	115	112	118	121	135	90	121	128	143
Gave birth that year	45	23	27	26	41	30	35	27	28	31	43
Total reported infections	3,949	4,183	4,305	4,471	4,431	4,726	4,651	4,093	5,078	6,313	7,151

Note: Information about the number of reported cases of gonorrhea, chlamydia, early syphilis and genital herpes was provided by STD Program in the Office of Infectious Diseases (see Table 3B-3 in the Arizona Health Status and Vital Statistics annual reports). Information about females who gave birth while infected with genital herpes is collected on birth certificates.

TABLE 16
TRENDS IN THE INCIDENCE RATES* OF SEXUALLY TRANSMITTED INFECTIONS BY AGE GROUP AND YEAR AMONG
FEMALES 10-19 YEARS, ARIZONA, 1996-2006

	1996	1997	1998	1999	2000	2001	2002	2003	2004	2005	2006
10-14 years old											
Diagnosed with:											
Gonorrhea	33.4	21.7	19.8	21.3	17.4	19.5	11.2	15.4	17.2	18.5	17.9
Chlamydia	126.0	108.9	119.8	126.0	112.5	122.6	97.5	83.7	90.1	97.1	100.3
Early syphilis	0.0	1.3	0.0	1.2	1.0	1.1	0.0	0.0	0.0	9.0	0.0
Genital herpes	NA	3.2	3.7	1.8	3.3	3.7	1.0	1.0	2.4	2.3	3.1
Total reported infections	160.0	135.1	143.3	150.3	134.2	146.9	109.7	100.1	109.7	126.9	121.3
15-19 years old											
Diagnosed with:											
Gonorrhea	413.7	350.3	355.5	365.2	319.2	292.4	248.2	259.3	267.7	346.5	376.2
Chlamydia	2318.0	2330.2	2381.1	2331.1	2104.5	2211.5	2129.1	1791.2	2189.1	2619.4	2895.7
Early syphilis	13.0	8.7	9.7	11.2	12.4	13.1	12.2	12.9	9.5	6.2	7.5
Genital herpes	NA	118.1	74.2	69.6	66.7	66.1	71.4	46.4	60.3	61.5	66.9
Gave birth that year (%)	NA	13.1	23.5	23.2	34.7	24.8	25.9	30.0	23.1	24.2	30.1
Total reported infections	2744.7	2807.3	2820.5	2777.1	2502.8	2583.1	2460.9	2109.8	2526.6	3033.6	3346.3

* Number of cases per 100,000 females in specified age group. The incidence rates of genital herpes among females who gave birth that year are per 1,000 births.

TABLE 17
PREGNANCIES AND PREGNANCY RATES, FEMALES 19 OR YOUNGER
BY COUNTY OF RESIDENCE, ARIZONA, 2006

County of residence	NUMBER OF PREGNANCIES:*				
	All 19 years or younger	10-14 years	15-19 years		
			Total 15-19 years	15-17 years	18-19 years
Apache	199	1	198	67	131
Cochise	239	2	237	92	145
Coconino	324	5	319	107	212
Gila	142	3	139	49	90
Graham	110	1	109	41	68
Greenlee	17	0	17	3	14
Maricopa	9,203	157	9,046	3,197	5,849
Mohave	393	1	392	123	269
Navajo	325	3	322	130	192
Pima	2,225	45	2,180	727	1,453
Pinal	615	9	606	189	417
Santa Cruz	131	4	127	50	77
Yavapai	367	5	362	115	247
Yuma	581	6	575	197	378
La Paz	36	0	36	13	23
Unknown	11	0	11	5	6
TOTAL STATE**	14,918	242	14,676	5,105	9,571

County of residence	PREGNANCY RATES:***				
	All 19 years or younger	10-14 years	15-19 years		
			Total 15-19 years	15-17 years	18-19 years
Apache	25.6	0.3	49.6	26.8	87.9
Cochise	24.2	0.4	46.4	30.0	71.1
Coconino	31.0	1.0	56.8	34.6	84.0
Gila	37.7	1.6	72.8	38.7	139.8
Graham	35.5	0.7	65.0	42.4	95.6
Greenlee	24.7	0.0	44.5	9.8	69.0
Maricopa	35.4	1.2	73.1	41.5	125.0
Mohave	33.0	0.2	69.6	32.9	142.1
Navajo	30.0	0.5	60.3	38.2	99.4
Pima	32.9	1.4	62.4	36.8	95.8
Pinal	34.1	1.0	69.0	34.0	129.3
Santa Cruz	32.9	2.0	63.1	38.4	108.5
Yavapai	29.6	0.8	57.0	28.1	109.2
Yuma	38.0	0.8	75.2	43.2	122.8
La Paz	30.0	0.0	57.4	22.7	63.0
TOTAL STATE	34.1	1.1	68.7	39.0	115.6

* The sum of live births, fetal deaths and abortions.

** Includes records with unknown county of residence.

*** The number of pregnancies per 1,000 females in specified group.

TABLE 18
BIRTHS AND BIRTH RATES, FEMALES 19 OR YOUNGER BY COUNTY OF RESIDENCE,
ARIZONA, 2006

County of residence	NUMBER OF BIRTHS:				
	All 19 years or younger	10-14 years	15-19 years		
			Total 15-19 years	15-17 years	18-19 years
Apache	194	1	193	64	129
Cochise	209	0	209	81	128
Coconino	274	5	269	92	177
Gila	129	3	126	40	86
Graham	105	1	104	38	66
Greenlee	17	0	17	3	14
Maricopa	7,903	112	7,791	2,782	5,009
Mohave	390	1	389	123	266
Navajo	311	3	308	120	188
Pima	1,768	24	1,744	577	1,167
Pinal	584	8	576	183	393
Santa Cruz	121	3	118	48	70
Yavapai	316	4	312	96	216
Yuma	554	5	549	187	362
La Paz	34	0	34	13	21
Unknown	7	0	7	3	4
TOTAL STATE	12,916	170	12,746	4,450	8,296

County of residence	BIRTH RATES:**				
	All 19 years or younger	10-14 years	15-19 years		
			Total 15-19 years	15-17 years	18-19 years
Apache	24.9	0.3	48.3	25.6	86.6
Cochise	21.2	0.0	40.9	26.4	62.8
Coconino	26.2	1.0	47.9	29.8	70.2
Gila	34.2	1.6	66.0	31.6	133.5
Graham	33.9	0.7	62.0	39.3	92.8
Greenlee	24.7	0.0	44.5	9.8	69.0
Maricopa	30.4	0.8	62.9	36.1	107.0
Mohave	32.7	0.2	69.1	32.9	140.5
Navajo	28.7	0.5	57.7	35.2	97.3
Pima	26.2	0.7	49.9	29.2	76.9
Pinal	32.4	0.9	65.6	32.9	121.9
Santa Cruz	30.4	1.5	58.6	36.8	98.6
Yavapai	25.5	0.7	49.1	23.5	95.5
Yuma	36.2	0.7	71.8	41.0	117.6
La Paz	28.4	0.0	54.2	22.7	57.5
TOTAL STATE	29.6	0.8	59.6	34.0	100.2

** The number of births per 1,000 females in specified group.

TABLE 19
PREGNANCY RATES¹ AND NUMBER OF LIVE BIRTHS, FETAL DEATHS AND
ABORTIONS TO TEENS BY INDIVIDUAL AGE, ARIZONA, 2006

Age	Population	PREGNANCIES BY OUTCOME			TOTAL PREGNANCIES	
		Live births	Induced terminations of pregnancy (or abortions)	Spontaneous fetal losses	Number	Rate
10	44,138	0	1	0	1	0.0
11	44,322	0	1	0	1	0.0
12	44,636	2	4	0	6	0.1
13	44,925	25	19	0	44	1.0
14	45,279	143	44	3	190	4.2
10-14	223,300	170	69	3	242	1.1
15	45,863	593	99	3	695	15.2
16	43,891	1,448	215	9	1,672	38.1
17	41,151	2,409	310	19	2,738	66.5
15-17	130,905	4,450	624	31	5,105	39.0
18	41,172	3,523	548	19	4,090	99.3
19	41,621	4,773	678	30	5,481	131.7
18-19	82,793	8,296	1,226	49	9,571	115.6
Total 10-19	436,998	12,916	1,919	83	14,918	34.1

¹Rates per 1,000 female population in specific group.

TABLE 20
BIRTHS TO FEMALES 19 OR YOUNGER BY AGE AND COUNTY OF RESIDENCE,
ARIZONA, 2006

	Total	Mother's age							
		12	13	14	15	16	17	18	19
TOTAL	12,916	2	25	143	593	1,448	2,409	3,523	4,773
Apache	194	0	1	0	7	20	37	53	76
Cochise	209	0	0	0	8	28	45	50	78
Coconino	274	1	0	4	15	26	51	68	109
Gila	129	0	1	2	3	15	22	37	49
Graham	105	0	0	1	6	15	17	29	37
Geenlee	17	0	0	0	2	1	0	8	6
Maricopa	7,903	1	16	95	394	895	1,493	2,137	2,872
Mohave	390	0	0	1	13	45	65	110	156
Navajo	311	0	1	2	16	36	68	90	98
Pima	1,768	0	4	20	63	194	320	511	656
Pima	584	0	0	8	21	53	109	162	231
Santa Cruz	121	0	0	3	8	14	26	30	40
Yavapai	316	0	1	3	15	29	52	84	132
Yuma	554	0	1	4	19	73	95	143	219
La Paz	34	0	0	0	3	3	7	8	13
Unknown	7	0	0	0	0	1	2	3	1

TABLE 21
ABORTIONS TO FEMALES 19 OR YOUNGER BY AGE AND COUNTY OF RESIDENCE,
ARIZONA, 2006

	Total	11	12	13	14	15	16	17	18	19
TOTAL	1,919	2	4	19	44	99	215	310	548	678
Apache	5	0	0	0	0	0	1	2	1	1
Cochise	29	1	0	0	1	2	5	3	4	13
Coconino	50	0	0	0	0	2	7	6	16	19
Gila	9	0	0	0	0	2	2	3	1	1
Graham	3	0	0	0	0	1	0	1	0	1
Greenlee	0			0	0	0	0	0	0	0
Maricopa	1,242	1	1	11	29	63	129	204	362	442
Mohave	0			0	0	0	0	0	0	0
Navajo	11	0	0	0	0	1	4	3	1	2
Pima	450	0	2	8	11	24	50	72	132	151
Pinal	30	0	0	0	1	0	2	4	9	14
Santa Cruz	10	0	1	0	0	0	1	1	6	1
Yavapai	50	0	0	0	1	3	8	7	11	20
Yuma	24	0	0	0	1	1	5	3	5	9
La Paz	2	0	0	0	0	0	0	0	0	2
Unknown	4	0	0	0	0	0	1	1	0	2

TABLE 22
SOURCES OF PAYMENT FOR LABOR AND DELIVERY, FEMALES 19 OR YOUNGER
BY AGE AND COUNTY OF RESIDENCE, ARIZONA, 2006

	Total	AHCCCS	IHS	Private insurance	Self	Unknown
TOTAL	12,916	10,322	337	1,791	338	128
Apache	194	101	75	1	3	14
Cochise	209	161	0	39	7	2
Coconino	274	184	69	16	1	4
Gila	129	77	47	3	2	0
Graham	105	77	10	12	3	3
Greenlee	17	10	0	6	1	0
Maricopa	7,903	6,523	35	1,147	158	40
Mohave	390	306	2	41	9	32
Navajo	311	216	71	13	5	6
Pima	1,768	1,353	18	305	74	18
Pinal	584	438	9	112	25	0
Santa Cruz	121	92	0	10	18	1
Yavapai	316	281	1	29	4	1
Yuma	554	474	0	52	28	0
La Paz	34	29	0	5	0	0
Unknown	7	0	0	0	0	7

TABLE 23
SOURCES OF PAYMENT FOR LABOR AND DELIVERY, FEMALES 19 OR YOUNGER
BY AGE GROUP, ARIZONA, 2006

		Total	Mother's age group			
			<15	15-17	18-19	
Total	Count	12,916	170	4,450	8,296	
Payee for births	AHCCCS	Count	147	3,560	6,615	
		Percent	79.9	86.5	80.0	79.7
	IHS	Count	337	4	117	216
		Percent	2.6	2.4	2.6	2.6
	Private insurance	Count	1,791	13	591	1,187
		Percent	13.9	7.6	13.3	14.3
	Self	Count	338	5	135	198
		Percent	2.6	2.9	3.0	2.4
	Unknown	Count	128	1	47	80
		Percent	1.0	0.6	1.1	1.0

TABLE 24
TEENAGE BIRTHS BY NUMBER OF PREVIOUS PREGNANCIES BY AGE GROUP,
ARIZONA, 2006

		Total	Mother's age group			
			<15	15-17	18-19	
Total	Count	12,916	170	4,450	8,296	
Total prior pregnancies	None	Count	9,400	167	3,753	5,480
		Percent	72.8	98.2	84.3	66.1
	1	Count	2,750	3	614	2,133
		Percent	21.3	1.8	13.8	25.7
	2	Count	613	0	73	540
		Percent	4.7	0.0	1.6	6.5
	3	Count	117	0	5	112
		Percent	0.9	0.0	0.1	1.4
	4 or more	Count	34	0	3	31
		Percent	0.3	0.0	0.1	0.4
	Unknown	Count	2	0	2	0
		Percent	0.0	0.0	0.0	0.0

TABLE 25
TEENAGE BIRTHS BY MARITAL STATUS AND AGE GROUP,
ARIZONA, 2006

		Total	Mother's age group			
			<15	15-17	18-19	
Total	Count	12,916	170	4,450	8,296	
Marital status	Married	Count	1,887	3	319	1,565
		Percent	14.6	1.8	7.2	18.9
	Unmarried	Count	10,997	167	4,126	6,704
		Percent	85.1	98.2	92.7	80.8
	Other	Count	32	0	5	27
		Percent	0.2	0.0	0.1	0.3

TABLE 26
TEENAGE BIRTHS BY MOTHER'S EDUCATION AND AGE GROUP
ARIZONA, 2006

		Total	Mother's age group			
			<15	15-17	18-19	
Total	Count	12,916	170	4,450	8,296	
Mother's education	< 8	Count	544	44	186	314
		Percent	4.2	25.9	4.2	3.8
	8	Count	714	79	343	292
		Percent	5.5	46.5	7.7	3.5
	9-11	Count	6,534	46	3,319	3,169
		Percent	50.6	27.1	74.6	38.2
	12	Count	4,246	0	533	3,713
		Percent	32.9	0.0	12.0	44.8
	13-16	Count	755	0	22	733
		Percent	5.8	0.0	0.5	8.8
	17+	Count	0	0	0	0
		Percent	0.0	0.0	0.0	0.0
	Unknown	Count	123	1	47	75
		Percent	1.0	0.6	1.1	0.9

**TABLE 27
TEENAGE BIRTHS BY TRIMESTER OF ENTRY INTO PRENATAL CARE
AND AGE GROUP, ARIZONA, 2006**

		Total	Mother's age group			
			<15	15-17	18-19	
Total	Count	12,916	170	4,450	8,296	
Prenatal care	No care	Count	459	13	166	280
		Percent	3.6	7.6	3.7	3.4
	1st trimester	Count	8,237	77	2,615	5,545
		Percent	63.8	45.3	58.8	66.8
	2nd trimester	Count	3,445	66	1,345	2,034
		Percent	26.7	38.8	30.2	24.5
	3rd trimester	Count	764	14	316	434
		Percent	5.9	8.2	7.1	5.2
	Unknown	Count	11	0	8	3
		Percent	0.1	0.0	0.2	0.0

**TABLE 28
TEENAGE BIRTHS BY NUMBER OF PRENATAL VISITS AND AGE GROUP,
ARIZONA, 2006**

		Total	Mother's age group			
			<15	15-17	18-19	
Total	Count	12,916	170	4,450	8,296	
Prenatal visits	No visits	Count	459	13	166	280
		Percent	3.6	7.6	3.7	3.4
	1-4 visits	Count	821	17	355	449
		Percent	6.4	10.0	8.0	5.4
	5-8 visits	Count	3,154	50	1,177	1,927
		Percent	24.4	29.4	26.4	23.2
	9-12 visits	Count	5,828	60	1,878	3,890
		Percent	45.1	35.3	42.2	46.9
	13+ visits	Count	2,624	30	858	1,736
		Percent	20.3	17.6	19.3	20.9
	Unknown	Count	30	0	16	14
		Percent	0.2	0.0	0.4	0.2

TABLE 29
TOBACCO AND/OR ALCOHOL USE DURING PREGNANCY AMONG FEMALES
19 OR YOUNGER BY AGE GROUP, ARIZONA, 2006

		Total	Mother's age group			
			<15	15-17	18-19	
Total	Count	12,916	170	4,450	8,296	
Substance use	Drinker, nonsmoker	Count	20	0	11	9
		Percent	0.2	0.0	0.2	0.1
	Smoker, nondrinker	Count	582	2	132	448
		Percent	4.5	1.2	3.0	5.4
	Smoker and drinker	Count	23	0	10	13
		Percent	0.2	0.0	0.2	0.2
	Nonsmoker and nondrinker	Count	12,291	168	4,297	7,826
		Percent	95.2	98.8	96.6	94.3

TABLE 30
 RISK FOR LOW-BIRTHWEIGHT (LBW) BIRTHS BY SELECTED CHARACTERISTICS OF FEMALES 19 OR YOUNGER,
 ARIZONA, 2006

	Mother's age group									
	<15			15-17			18-19			
	Total births	LBW births Count	Percent	Total births	LBW births Count	Percent	Total births	LBW births Count	Percent	LBW births Percent
Race/ethnicity	White non-Hispanic	19	4	21.1	852	67	7.9	2,338	177	7.6
	Hispanic or Latino	123	16	13.0	2,923	246	8.4	4,692	367	7.8
	Black or African American	7	0	0.0	187	21	11.2	407	62	15.2
	American Indian or Alaska Native	19	1	5.3	430	37	8.6	767	53	6.9
	Asian or Pacific Islander	1	0	0.0	28	1	3.6	63	2	3.2
	Unknown	1	0	0.0	30	2	6.7	29	1	3.4
Substance use	Drinker, nonsmoker	0	0	0.0	11	1	9.1	9	0	0.0
	Smoker, nondrinker	2	0	0.0	132	13	9.8	448	59	13.2
	Smoker and drinker	0	0	0.0	10	0	0.0	13	1	7.7
	Nonsmoker and nondrinker	168	21	12.5	4,297	360	8.4	7,826	602	7.7
Payee for births	AHCCCS	147	21	14.3	3,560	307	8.6	6,615	537	8.1
	IHS	4	0	0.0	117	2	1.7	216	5	2.3
	Private insurance	13	0	0.0	591	42	7.1	1,187	93	7.8
	Self	5	0	0.0	135	20	14.8	198	23	11.6
	Unknown	1	0	0.0	47	3	6.4	80	4	5.0
		41	21	51.2	910	304	33.4	1,601	542	33.9
Length of gestation	36 weeks or less	129	0	0.0	3,537	69	2.0	6,689	119	1.8
	37 weeks or more	0	0	0.0	3	1	33.3	6	1	16.7
	Unknown	30	11	36.7	521	91	17.5	729	136	18.7
Prenatal visits	Less than 5	140	10	7.1	3,913	282	7.2	7,553	524	6.9
	5 or more	0	0	0.0	16	1	6.3	14	2	14.3
	Unknown									

**TABLE 31
POPULATION OF FEMALES 19 OR YOUNGER, NUMBER OF PREGNANCIES AND PREGNANCY
RATES BY AGE GROUP AND RACE/ETHNICITY, ARIZONA, 2006**

	POPULATION				
	All 19 years or younger	10-14 years	15-19 years	15-17 years	18-19 years
All groups	436,998	223,300	213,698	130,905	82,793
White non-Hispanic	219,100	108,998	110,102	67,183	42,920
Hispanic or Latino	149,959	79,675	70,284	43,094	27,191
Black or African American	22,419	11,773	10,646	6,617	4,029
American Indian or Alaska Native	35,250	17,565	17,685	11,009	6,676
Asian or Pacific Islander	10,270	5,289	4,981	3,003	1,978

Note: Two data sources were utilized in producing the 2006 population estimates. The totals for the State and each of its counties agree with the projections released by the Department of Economic Security (DES) on March 31, 2006 (<http://www.workforce.az.gov/?PAGEID=67&SUBID=138>). The percentages of population breakdowns by single-year of age, gender and race/ethnicity were derived from the "Bridged-Race Vintage 2005 Postcensal Population Estimates for Calculating Vital Rates", available from the National Center for Health Statistics (NCHS: <http://www.cdc.gov/nchs/about/major/dvs/popbridge/datadoc.htm#vintage2005>). These percentages were then applied to total state and county population projections for 2006 from DES. The 2006 population estimates by race/ethnicity should not be

	NUMBER OF PREGNANCIES				
	All 19 years or younger	10-14 years	15-19 years	15-17 years	18-19 years
All groups	14,918	242	14,676	5,105	9,571
White non-Hispanic	4,148	47	4,101	1,157	2,944
Hispanic or Latino	8,396	150	8,246	3,131	5,115
Black or African American	731	16	715	239	476
American Indian or Alaska Native	1,277	20	1,257	457	800
Asian or Pacific Islander	132	4	128	39	89
Unknown	234	5	229	82	147

	PREGNANCY RATES PER 1,000 FEMALES				
	All 19 years or younger	10-14 years	15-19 years	15-17 years	18-19 years
All groups	34.1	1.1	68.7	39.0	115.6
White non-Hispanic	18.9	0.4	37.2	17.2	68.6
Hispanic or Latino	56.0	1.9	117.3	72.7	188.1
Black or African American	32.6	1.4	67.2	36.1	118.1
American Indian or Alaska Native	36.2	1.1	71.1	41.5	119.8
Asian or Pacific Islander	12.9	0.8	25.7	13.0	45.0

**TABLE 32
POPULATION OF FEMALES 19 OR YOUNGER BY COUNTY OF RESIDENCE, ARIZONA, 2006**

	All 19 years or younger	10-14 years	15-19 years	15-17 years	18-19 years
ARIZONA	436,998	223,300	213,698	130,905	82,793
Apache	7,785	3,791	3,994	2,504	1,490
Cochise	9,880	4,773	5,107	3,068	2,039
Coconino	10,456	4,842	5,614	3,091	2,523
Gila	3,771	1,861	1,910	1,266	644
Graham	3,095	1,417	1,678	967	711
Greenlee	689	382	307	203	104
La Paz	1,199	627	572	365	207
Maricopa	260,095	136,284	123,811	77,002	46,809
Mohave	11,924	6,294	5,630	3,737	1,893
Navajo	10,829	5,490	5,339	3,407	1,932
Pima	67,545	32,599	34,946	19,779	15,167
Pinal	18,045	9,259	8,786	5,562	3,224
Santa Cruz	3,979	1,966	2,013	1,303	710
Yavapai	12,404	6,056	6,348	4,087	2,261
Yuma	15,302	7,659	7,643	4,564	3,079

Note: Two data sources were utilized in producing the 2006 population estimates. The totals for the State and each of its counties agree with the projections released by the Department of Economic Security (DES) on March 31, 2006 (<http://www.workforce.az.gov/?PAGEID=67&SUBID=138>). The percentages of population breakdowns by single-year of age, gender and race/ethnicity were derived from the "Bridged-Race Vintage 2005 Postcensal Population Estimates for Calculating Vital Rates", available from the National Center for Health Statistics (NCHS): <http://www.cdc.gov/nchs/about/major/dvs/popbridge/datadoc.htm#vintage2005>. These percentages were then applied to total state and county population projections for 2006 from DES. The 2006 population estimates by race/ethnicity should not be compared with the previously published estimates for 2001-2005, which used the 2000 year census shares.

**APPENDIX
HOW TO COMPUTE THE RATES OF FIRST AND REPEAT CHILDBEARING**

	2000	2001	2002	2003	2004	2005	2006	Comments
A. The number of females 15-19 years old	177,114	183,057	188,780	194,127	200,676	208,105	213,698	Census enumeration for 2000. In order to obtain the 2001-2005 denominators, the 2000 percentages of population breakdowns by age group and gender were applied to total state and county annual population estimates released by the DES.
B. The number of births to females 15-19 years old	11,973	11,591	11,268	11,489	11,676	11,748	12,746	Based on the birth database.
C. The rate of births (B/A) * 1,000	67.6	63.3	59.7	59.2	58.2	56.5	59.6	The number of births per 1,000 females 15-19 years old.
D. Cumulative number of mothers who gave birth when 15-19 years old	26,525	26,231	25,433	25,346	25,568	25,761	26,916	Mothers who gave birth when 15-19 years old. As an example, the 2006 cohort of mothers who were 15-19 years old includes 12,746 who gave birth that year and 14,170 who gave birth prior to 2005 and were still 15-19 years old in 2006.
E. The number of females 15-19 years old who had a birth previously (D-B)	14,552	14,640	14,165	13,857	13,892	14,013	14,170	The cumulative number of mothers 15-19 years old (Table 26) - those who gave birth that year.
F. The number of repeat births to females 15-19 years old who had a birth previously	2,639	2,680	2,533	2,567	2,590	2,488	2,864	Table 1B-24 in "Arizona Health Status and Vital Statistics" annual report.
G. The rate of repeat childbearing (F/E) * 1,000	181.3	183.1	178.8	185.2	186.4	177.5	202.1	The number of repeat births per 1,000 females 15-19 years old who had a birth previously.
H. The number of females 15-19 years old who did not have a birth previously (A-E)	162,562	168,417	174,615	180,270	186,784	194,092	199,528	All 15-19 years old - those who gave birth previously.
I. The number of first-time births to females 15-19 years old who did not have a birth previously	9,285	8,870	8,699	8,922	9,071	9,259	9,880	Table 1B-24 in "Arizona Health Status and Vital Statistics" annual report.
J. The rate of first-time births (I/H) * 1,000	57.1	52.7	49.8	49.5	48.6	47.7	49.5	The number of first-time births per 1,000 females 15-19 years old who did not have a birth previously.

Our Web site at <http://www.azdhs.gov/plan> provides instantaneous access to a wide range of statistical information about health status of Arizonans. The *Arizona Health Status and Vital Statistics* annual report examines trends in natality, mortality and morbidity towards established health objectives. Additional reports and studies include *Differences in the Health Status Among Race/Ethnic Groups*, *Advance Vital Statistics by County of Residence*, *Mortality from Alzheimer's Disease*, *Injury Mortality among Arizona Residents* (accidents, suicides, homicides, legal intervention, firearm-related fatalities, drug-related deaths, drowning deaths, falls among Arizonans 65 years or older), hospital inpatient and emergency department statistics for *mental disorders*, *asthma*, *diabetes*, *influenza and pneumonia* and *substance abuse*, *Community Vital Statistics*, *Teenage Pregnancy*, *Selected Characteristics of Newborns and Mothers Giving Birth by Census Tract* in Maricopa County, Pima County and South Phoenix Area, *Health Status Profile of American Indians in Arizona* and *Deaths from Exposure to Excessive Natural Heat Occurring in Arizona*.



**Health Status and Vital Statistics Section
Bureau of Public Health Statistics
Public Health Services
ARIZONA DEPARTMENT OF HEALTH SERVICES**