

# **TEENAGE PREGNANCY**

## **Arizona, 1998-2008**



**Public Health Services  
Bureau of Public Health Statistics  
Health Status and Vital Statistics Section**

~ Leadership for a Healthy Arizona ~



**Janice K. Brewer, Governor**  
**State of Arizona**

**Will Humble, Interim Director**  
**Arizona Department of Health Services**

**HEALTH STATUS AND VITAL STATISTICS SECTION  
BUREAU OF PUBLIC HEALTH STATISTICS  
ARIZONA DEPARTMENT OF HEALTH SERVICES**

150 North 18th Avenue, Suite 550

Phoenix, Arizona 85007

Phone: 602/542-7333; FAX: 602/542-2940

[www.azdhs.gov/plan](http://www.azdhs.gov/plan)

**This publication can be made available in alternative format.  
Please contact the Bureau of Public Health Statistics  
at 602/542-7333 (voice) or call 1-800-367-8939 (TDD).**

***The Arizona Department of Health Services is  
an Equal Employment Opportunity Agency.***

***Permission to quote from or reproduce materials from this  
publication is granted when due acknowledgment is made.***

# TEENAGE PREGNANCY, ARIZONA, 1998-2008

---

by

Christopher K. Mrela, Ph.D., *Assistant Registrar of Vital Statistics*  
Clare Torres, *Senior Health Data Analyst*

October 2009



# TEENAGE PREGNANCY, ARIZONA, 1998-2008

## Table of Contents

PURPOSE.....	1
METHODS AND SOURCES.....	1
DATA ORGANIZATION.....	1
COMPARATIVE NATIONAL AND STATE DATA.....	2
KEY FINDINGS.....	2
DATA TABLES.....	13

## List of Figures

<b>Figure 1</b> .....	3
PREGNANCY RATES BY AGE GROUP AND YEAR AMONG FEMALES 19 OR YOUNGER, ARIZONA, 1998-2008	
<b>Figure 2</b> .....	3
TRENDS IN THE NUMBER OF PREGNANCIES AND PREGNANCY RATES AMONG FEMALES 19 OR YOUNGER, ARIZONA, 1998-2008	
<b>Figure 3</b> .....	4
TRENDS IN THE NUMBER OF PREGNANCIES BY RACE/ETHNICITY AMONG FEMALES 19 OR YOUNGER, ARIZONA, 1998-2008	
<b>Figure 4</b> .....	4
COMPARISON OF PREGNANCY RATES BY YEAR AMONG HISPANICS OR LATINOS AND ALL FEMALES 19 OR YOUNGER, ARIZONA, 1998-2008	
<b>Figure 5</b> .....	5
COMPARISON OF PREGNANCY RATES BY YEAR AMONG WHITE NON-HISPANICS AND ALL FEMALES 19 OR YOUNGER, ARIZONA, 1998-2008	
<b>Figure 6</b> .....	5
COMPARISON OF PREGNANCY RATES BY YEAR AMONG AMERICAN INDIAN OR ALASKA NATIVES AND ALL FEMALES 19 OR YOUNGER, ARIZONA, 1998-2008	
<b>Figure 7</b> .....	6
COMPARISON OF PREGNANCY RATES BY YEAR AMONG BLACKS OR AFRICAN AMERICANS AND ALL FEMALES 19 OR YOUNGER, ARIZONA, 1998-2008	
<b>Figure 8</b> .....	6
COMPARISON OF PREGNANCY RATES BY YEAR AMONG ASIANS OR PACIFIC ISLANDERS AND ALL FEMALES 19 OR YOUNGER, ARIZONA, 1998-2008	
<b>Figure 9</b> .....	7
PROPORTIONAL CONTRIBUTION OF SURGICAL AND NON-SURGICAL ABORTIONS BY YEAR AMONG FEMALES 19 OR YOUNGER, ARIZONA, 2001-2008	
<b>Figure 10</b> .....	7
PROPORTIONAL CONTRIBUTION OF NON-SURGICAL AND SURGICAL ABORTIONS BY RACE/ETHNICITY AMONG FEMALES 19 OR YOUNGER, ARIZONA, 2008	
<b>Figure 11</b> .....	8
CUMULATIVE NUMBER OF MOTHERS WHO WERE 19 OR YOUNGER IN ARIZONA BY YEAR, 2000-2008	
<b>Figure 12</b> .....	8
RATES OF FIRST AND REPEAT BIRTHS TO FEMALES 15-19 YEARS, ARIZONA, 2000-2008	
<b>Figure 13</b> .....	9
BIRTHS TO MOTHERS 19 OR YOUNGER BY MARITAL STATUS, ARIZONA, 1988, 1998 AND 2008	
<b>Figure 14</b> .....	9
NUMBER OF BIRTHS TO MOTHERS 19 OR YOUNGER BY PAYEE, ARIZONA, 1998 AND 2008	
<b>Figure 15</b> .....	10
TRENDS IN THE INCIDENCE OF SEXUALLY TRANSMITTED INFECTIONS AMONG FEMALES 15-19 YEARS, ARIZONA, 1998-2008	

## List of Figures (continued)

<b>Figure 16</b> .....	10
CUMULATIVE NUMBER OF CASES OF GENITAL HERPES AMONG FEMALES 15-19 YEARS, ARIZONA, 1998-2008	
<b>Figure 17</b> .....	11
BIRTH RATES FOR TEENAGERS 15-19 YEARS, NATIONALLY, 2000-2006 AND ARIZONA 2000-2008	
<b>Figure 18</b> .....	11
BIRTH RATES FOR HISPANIC OR LATINO TEENAGERS 15-19 YEARS, NATIONALLY, 2000-2006 AND ARIZONA, 2000-2008	

## List of Tables

<b>Table 1</b> .....	14
PREGNANCIES AND PREGNANCY OUTCOME BY AGE GROUP AND YEAR, FEMALES 19 OR YOUNGER, ARIZONA, 1998-2008	
<b>Table 2</b> .....	15
PREGNANCY RATES BY PREGNANCY OUTCOME, AGE GROUP AND YEAR, FEMALES 19 OR YOUNGER, ARIZONA, 1998-2008	
<b>Table 3</b> .....	16
LIVE BIRTHS TO FEMALES 19 OR YOUNGER BY AGE GROUP, RACE/ETHNICITY AND YEAR, ARIZONA, 1998-2008	
<b>Table 4</b> .....	17
ABORTIONS TO FEMALES 19 OR YOUNGER BY AGE GROUP, RACE/ETHNICITY AND YEAR, ARIZONA, 1998-2008	
<b>Table 5</b> .....	18
NUMBER OF PREGNANCIES BY PREGNANCY OUTCOME, RACE/ETHNIC GROUP AND YEAR AMONG FEMALES AGE 17 OR YOUNGER WITH RATES, ARIZONA, 1998-2008	
<b>Table 6</b> .....	19
NUMBER OF PREGNANCIES BY PREGNANCY OUTCOME, RACE/ETHNIC GROUP AND YEAR AMONG FEMALES 15-17 YEARS OLD WITH RATES, ARIZONA, 1998-2008	
<b>Table 7</b> .....	20
NUMBER OF PREGNANCIES BY PREGNANCY OUTCOME, RACE/ETHNIC GROUP AND YEAR AMONG FEMALES 18-19 YEARS OLD WITH RATES, ARIZONA, 1998-2008	
<b>Table 8</b> .....	21
NUMBER OF PREGNANCIES BY PREGNANCY OUTCOME, RACE/ETHNIC GROUP AND YEAR AMONG FEMALES 19 OR YOUNGER WITH RATES, ARIZONA, 1998-2008	
<b>Table 9</b> .....	22
TRENDS IN PREGNANCY RATES BY COUNTY OF RESIDENCE AMONG FEMALES 10-17 AND 18-19 YEARS OLD, ARIZONA, 1998-2008	
<b>Table 10</b> .....	23
LIVE BIRTHS TO FEMALES 19 OR YOUNGER AS A PERCENTAGE OF TOTAL LIVE BIRTHS BY AREA, RACE/ETHNICITY AND YEAR, ARIZONA. 1998-2008	
<b>Table 11</b> .....	24
BIRTH RATES BY AGE GROUP FOR FEMALES 19 OR YOUNGER, ARIZONA AND UNITED STATES, 1998-2008	
<b>Table 12</b> .....	25
REPEAT PREGNANCIES AMONG TEENAGE MOTHERS GIVING BIRTH BY AGE AND YEAR, ARIZONA, 1998-2008	
<b>Table 13</b> .....	26
CUMULATIVE NUMBER OF MOTHERS WHO WERE 19 OR YOUNGER IN ARIZONA IN 2008	
<b>Table 14</b> .....	27
TRENDS IN TEEN PREGNANCY RATES BY RACE/ETHNICITY AND AGE GROUP (INCLUDING REVISED RATES FOR 1998-1999), ARIZONA, 1998-2008	

**List of Tables** (continued)

<b>Table 15</b> .....	28
TRENDS IN SEXUALLY TRANSMITTED INFECTIONS BY AGE GROUP AND YEAR AMONG FEMALES 10-19 YEARS, ARIZONA, 1998-2008	
<b>Table 16</b> .....	29
TRENDS IN THE INCIDENCE RATES OF SEXUALLY TRANSMITTED INFECTIONS BY AGE GROUP AND YEAR AMONG FEMALES 10-19 YEARS, ARIZONA, 1998-2008	
<b>Table 17</b> .....	30
PREGNANCIES AND PREGNANCY RATES, FEMALES 19 OR YOUNGER BY COUNTY OF RESIDENCE, ARIZONA, 2008	
<b>Table 18</b> .....	31
BIRTHS AND BIRTH RATES, FEMALES 19 OR YOUNGER BY COUNTY OF RESIDENCE, ARIZONA, 2008	
<b>Table 19</b> .....	32
PREGNANCY RATES AND NUMBER OF LIVE BIRTHS, FETAL DEATHS AND ABORTIONS TO TEENS BY INDIVIDUAL AGE, ARIZONA, 2008	
<b>Table 20</b> .....	33
BIRTHS TO FEMALES 19 OR YOUNGER BY AGE AND COUNTY OF RESIDENCE, ARIZONA, 2008	
<b>Table 21</b> .....	34
ABORTIONS TO FEMALES 19 OR YOUNGER BY AGE AND COUNTY OF RESIDENCE, ARIZONA, 2008	
<b>Table 22</b> .....	35
SOURCES OF PAYMENT FOR LABOR AND DELIVERY, FEMALES 19 OR YOUNGER BY AGE AND COUNTY OF RESIDENCE, ARIZONA, 2008	
<b>Table 23</b> .....	36
SOURCES OF PAYMENT FOR LABOR AND DELIVERY, FEMALES 19 OR YOUNGER BY AGE GROUP, ARIZONA, 2008	
<b>Table 24</b> .....	37
TEENAGE BIRTHS BY NUMBER OF PREVIOUS PREGNANCIES BY AGE GROUP, ARIZONA, 2008	
<b>Table 25</b> .....	37
TEENAGE BIRTHS BY MARITAL STATUS AND AGE GROUP, ARIZONA, 2008	
<b>Table 26</b> .....	37
TEENAGE BIRTHS BY MOTHER'S EDUCATION AND AGE GROUP, ARIZONA, 2008	
<b>Table 27</b> .....	38
TEENAGE BIRTHS BY TRIMESTER OF ENTRY INTO PRENATAL CARE AND AGE GROUP, ARIZONA, 2008	
<b>Table 28</b> .....	38
TEENAGE BIRTHS BY NUMBER OF PRENATAL VISITS AND AGE GROUP, ARIZONA, 2008	
<b>Table 29</b> .....	39
TOBACCO AND/OR ALCOHOL USE DURING PREGNANCY AMONG FEMALES 19 OR YOUNGER BY AGE GROUP, ARIZONA, 2008	
<b>Table 30</b> .....	40
RISK FOR LOW-BIRTHWEIGHT (LBW) BIRTHS BY SELECTED CHARACTERISTICS OF FEMALES 19 OR YOUNGER, ARIZONA, 2008	
<b>Table 31</b> .....	41
POPULATION OF FEMALES 19 OR YOUNGER, NUMBER OF PREGNANCIES AND PREGNANCY RATES BY AGE GROUP AND RACE/ETHNICITY, ARIZONA, 2008	
<b>Table 32</b> .....	42
POPULATION OF FEMALES 19 OR YOUNGER BY COUNTY OF RESIDENCE, ARIZONA 2008	
<b>Appendix</b> .....	43
HOW TO COMPUTE THE RATES OF FIRST AND REPEAT CHILDBEARING	





## PURPOSE

This report is the annual update of information about pregnancies among females under age 20. The data for 2008 is placed in a temporal context by comparing it with the data from the preceding years. Earlier reports are available online at <http://www.azdhs.gov/plan/report/tp/index.htm> .

## METHODS AND SOURCES

In this report, pregnancies are measured as the sum of three components: live births, fetal deaths (or stillbirths) and reported abortions to Arizona resident women, unless otherwise specified. Not included are spontaneous fetal losses that occur at less than 20 weeks of gestation. Induced terminations of pregnancy do not include those performed out-of-state to Arizona residents, since they are not reported in Arizona. Pregnancy statistics for Arizona are not available on a sub-county level.

Teens are defined as 10-14 year old preadolescents and adolescents 15-19 years of age. Where possible, the data presented distinguishes 18-19 year old teenagers from those aged 15-17 and girls less than 15 years of age.

The primary source documents for the data are the certificates of live births, certificates of fetal deaths and reports of induced terminations of pregnancy filed with the Arizona Department of Health Services.

Several data sources were utilized in producing the population denominators for Arizona's resident females, used to calculate rates. The denominators for 2000 are the actual census enumerations from the U.S. Census Bureau. The denominators for 1998-1999 and 2001-2008 are population estimates of Arizona resident females aged 10-19 years. Detailed information about the assumptions and specific data sources is available online at <http://www.azdhs.gov/plan/menu/info/pd.htm> .

The pregnancy rates for 1996-1999 were revised in the 1996-2006 edition of the report using the population denominators that are consistent with both the 1990 and the 2000 census. The population projected previously from the 1990 census underestimated the growth of the Hispanic population during the 1990s. According to the 2000 census, there were 118,490 Hispanic females 19 years or younger in Arizona, 37.5 percent more than the number of 86,203 estimated by the Census Bureau in 1999. The revised denominators for 1996-1999 were derived from the "Bridged-race intercensal population estimates for July 1, 1990-July 1, 1999, by year, county, single-year of age, Hispanic origin, and sex" provided by NCHS. These estimates also are available online at [http://www.cdc.gov/nchs/nvss/bridged\\_race.htm](http://www.cdc.gov/nchs/nvss/bridged_race.htm) .

## DATA ORGANIZATION

Tables 1-16 present annual numbers and rates of pregnancy, fertility, and abortion by year from 1998 to 2008, age group, and race/ethnicity for Arizona teens. Temporal trends and changes may be assessed from this data. Proportional contribution of teen births to all births is shown in Table 10 by area of residence and race/ethnic group in Arizona from 1998 to 2008. Table 11 compares birth rates in Arizona to those in the United States. The annual numbers of repeat pregnancies among teenage mothers are shown by age and year from 1998 to 2008 in Table 12.

Table 14 presents teen pregnancy rates by race/ethnicity and age group by year from 1998 to 2008. It includes revised pregnancy rates for 1998-1999. Table 15 provides information about the incidence of sexually transmitted infections among females 10-14 and 15-19 years old in Arizona in 1998-2008. Table 16 shows the incidence rates by year from 1998 to 2008.

Frequency counts, proportions and rates in tables 17-32 all apply to the 2008 data. Tables 17-18 and 20-22 provide data by county of residence. Table 19 presents pregnancy rates by single year of age among females 19 and younger. Live births to teenage mothers are also reported in Tables 23-30 by marital status, education, previous pregnancies, trimester of entry into prenatal care, source of payment for labor and delivery and tobacco and alcohol use during pregnancy. The 2008 population denominators for Arizona resident females by age group and race/ethnicity, as well as by age group and county of residence are presented in Table 31 and Table 32. The *Appendix* demonstrates "How to compute the rates of first and repeat childbearing" using the annual data for 2000-2008.

## COMPARATIVE NATIONAL AND STATE DATA

Timely, comparable, and reliable teen pregnancy statistics for other States and the Nation are not easily available. "*Health, United States, 2008*", the premier annual publication of The Department of Health and Human Services, contains no information about pregnancies. The latest available national teenage birth rates for 2006 were published in January, 2009. No national abortion or fetal death data have been available since the 2005 calendar data year.

A report, "*Estimated Pregnancy Rates by Outcome for the United States, 1990-2004*"\* was published in April 2008. The authors combine the complete count of births provided by every state to the NCHS with the estimated numbers of abortions, early miscarriages, and fetal deaths. The number of abortions is estimated from surveys the Alan Guttmacher Institute conducts of known abortion providers (i.e. these data are by the place of occurrence and not by the woman's place of residence). The fetal loss estimates – including early miscarriages before 20 weeks of gestation - are from pregnancy history information collected by the National Survey of Family Growth (NFSG). Unlike vital statistics reports of fetal losses occurring at gestations of 20 weeks or more, NFSG include all gestations. Since the majority of fetal losses occur early in pregnancy before the reporting requirements for fetal deaths are in effect, their inclusion dramatically raises both the fetal loss rate and the pregnancy rate. The National Survey of Family Growth data are not state-specific. The pregnancy rates for Arizona teens cannot be compared with the rates for their peers nationally.

No comparable state-by-state data for 2007 or 2008 are available at this time.

## KEY FINDINGS

The following section presents some illustrative findings contained in the figures and tables of the report. It is not intended to be an exhaustive analysis of the tabulated data.

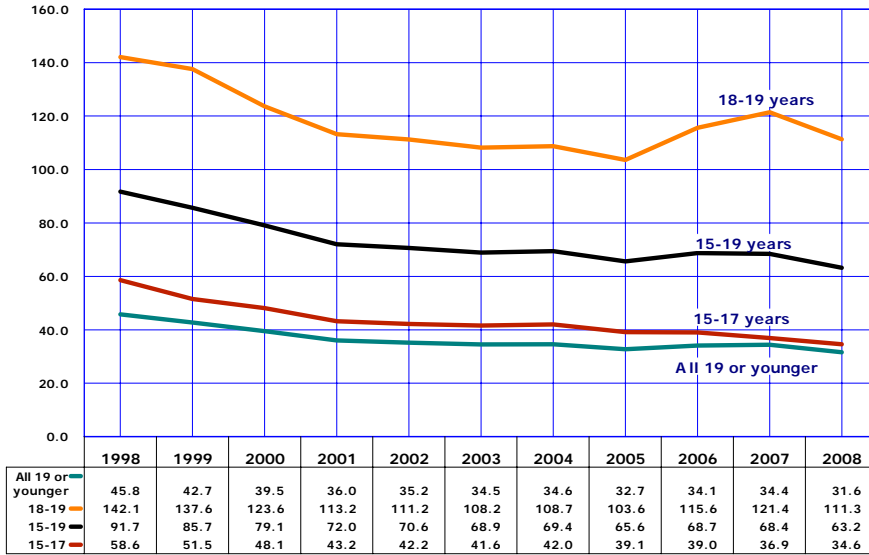
- **In 2008, the pregnancy rate of 31.6 pregnancies per 1,000 females 19 years or younger was 31 percent lower than the rate of 45.8/1,000 in 1998.**
- **The decline in the pregnancy rates from 1998 to 2008 was not accompanied by an equally impressive reduction in the number of teen pregnancies. In 2008, there were 14,047 pregnancies to females 19 years old or younger, 485 fewer than the 14,532 pregnancies recorded in 1998.**
- **While the overall teen pregnancy rate has fallen in Arizona, the drop in the rate can be attributed to the growth in the female teenage population (i.e., there were substantially more teenage girls in Arizona in 2008 than there were in 1998, but not substantially fewer teen pregnancies).**
- **From 2007 to 2008, only Black or African American females 19 years or younger experienced an increase in the number of pregnancies. In contrast, the number of pregnancies decreased for Hispanic, White non-Hispanic, American Indian, and Asian females.**
- **From 2007 to 2008, Arizona's Hispanic or Latino mothers of all ages experienced a major decrease of 6.8 percent in the number of births, twice the magnitude of the overall decline of 3.4 percent. Among Hispanic females 19 years old or younger the number of births declined by and unprecedented 7.9 percent, and the number of pregnancies declined by 9.1 percent. There is a reason to believe that there were fewer births (and pregnancies) among Hispanics of all ages, as well as teenagers, because there were fewer Hispanic or Latino residents in Arizona in 2008, than there were in 2007.\*\***
- **The first birth rate for childless teenagers has dropped 19.6 percent from 2000.**
- **Compared to 2000-2002, the repeat birth rate to teenagers who already had a child was no different in 2008. Eighteen percent of teenagers who already had one child gave birth again in 2008.**
- **The number of teen births paid for by the Arizona Health Care Cost Containment System (AHCCCS, the State's Medicaid program) increased by 46.0 percent from 6,794 in 1998 to 9,921 in 2008.**

\* Ventura SJ, Abma JC, Mosher WD, Henshaw SK. Estimated pregnancy rates by outcome for the United States, 1990-2004. National vital statistics reports; vol. 56 no 15. Hyattsville, MD: National Center for Health Statistics. 2008

\*\*Hispanics, unlike any other race/ethnic group in the State faced in 2008 not only the economic recession (shared by all), but also additional challenges such as the employer-sanction law (a penalty on employers hiring illegal immigrant), and a widespread practice of E-verify (checking the legal-residence status of those seeking employment. In fact, using the 2007 pregnancy rate (the number of pregnancies per 1,000 Hispanic females under the age of 20); we can estimate the number of Hispanic teens who left the State at 14,200. (For more information see <http://www.azdhs.gov/plan/report/ahs/ahs2008/pdf/text1b.pdf> ).

KEY FINDINGS

**Figure 1**  
Pregnancy Rates by Age Group and Year among Females 19 or Younger, Arizona, 1998-2008

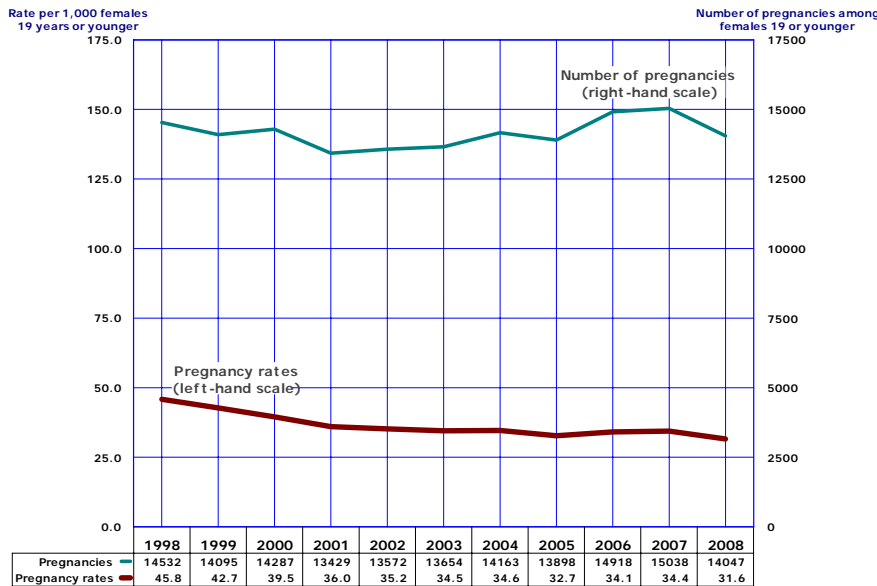


Teenage pregnancy rates dropped 31 percent overall from 1998 to 2008. **Figure 1, Table 2**). The declines in teenage pregnancy have been much steeper for younger than for older teenagers. The rate for teenagers 15-17 years dropped steeply by 41 percent from 58.6 per 1,000 in 1998 to 34.6 in 2008 (**Figure 1, Table 2**). The rate for older teenagers fell as well, by 21.7 percent beginning in 1998, from 142.1 to 111.3.

All components of the pregnancy rates for teenagers 19 years old or younger (births, abortions, and fetal losses) declined from 2007 to 2008 (**Table 1**).

Note: All rates are per 1,000 females in specified group.

**Figure 2**  
Trends in the Number of Pregnancies and Pregnancy Rates among Females 19 or Younger, Arizona, 1998-2008



Trends in the number of pregnancies to teenage women do not always parallel the pregnancy rate. The teen pregnancy rate measures the proportion of teenagers becoming pregnant in a given year; in other words, the relative "risk for pregnancy" in a population "at risk". The number of pregnancies is, however, also determined by the size of the population "at risk": or in this case by the number of teenage females in the population.

The decline in the pregnancy rates from 1998 to 2008 was not accompanied by an equally impressive reduction in the number of teen pregnancies (**Figure 2, Table 1**). The number of 14,047 pregnancies to females 19 years old or younger in Arizona in 2008 was only 3.3 percent lower than the 14,532 pregnancies recorded in 1998. It was the increase in the number of females 19 years old or younger from 316,975 in 1998 to 444,195 in 2008, which contributed to a substantially lower pregnancy rate.

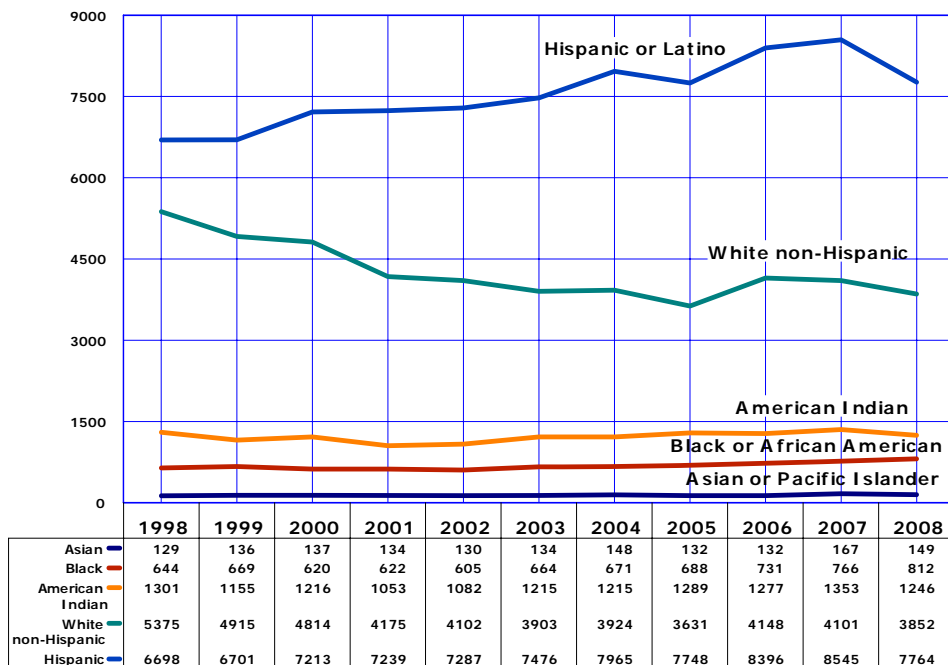
Pregnancy rate = the number of pregnancies per 1,000 females in specified group.

KEY FINDINGS

**Figure 3**  
Trends in the Number of Pregnancies\* by Race/Ethnicity among Females 19 or Younger, Arizona, 1998-2008

The number of pregnancies to Hispanic females aged 19 years or younger exceeded the number of pregnancies among white non-Hispanic peers in every year since 1994 (Figure 3 and Table 8 in this report show only the data for 1998-2008). In 2008, Hispanic or Latino females accounted for 55.3 percent of all pregnancies in this age group, followed by White non-Hispanics (27.4 percent). Black or African American, Asian or Pacific Islander, American Indian, and females of other race aged 19 years or younger accounted for a slightly larger share of pregnancies in 2008 (17.3 percent) than they did in 1998 (16.9 percent).

From 2007 to 2008, only Black or African American females 19 years or younger experienced an increase in the number of pregnancies. In contrast, the number of pregnancies decreased for White non-Hispanic, Hispanic, American Indian, and Asian or Pacific Islander females.



The sum of live births+induced abortions+spontaneous fetal deaths.

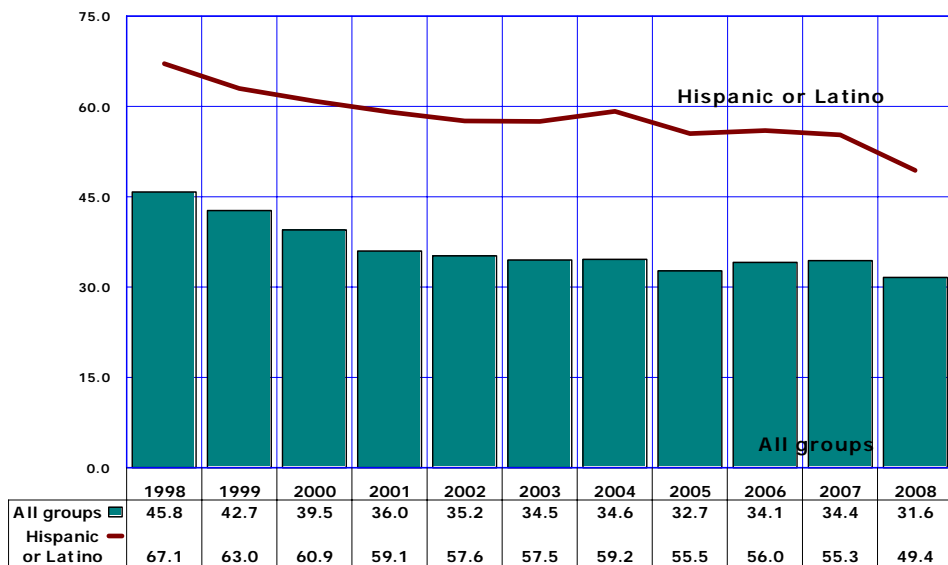
The teen pregnancy rates for all race and ethnic groups were lower in 2008 than in 1998 (Figure 1). However, the temporal trends in annual teen pregnancy rates differed considerably by race/ethnicity.

Figures 4, 5, 6, 7 and 8 reveal race/ethnicity-specific trends in teen pregnancy rates in Arizona in 1998-2008.

The pregnancy rate fell 14.3 percent for Hispanic or Latino females 19 years or younger in 1998-2003 and then increased in 2004 and 2006. From 2006 to 2008 the pregnancy rate of Hispanic or Latino females fell by 11.8 percent (Figure 4).

In each year from 1998 to 2008, the pregnancy rates of Hispanic or Latino females were consistently greater than the average rates for all females 19 years or younger in Arizona. In 2008, the Hispanic rate exceeded the average rate for all groups by 56.3 percent.

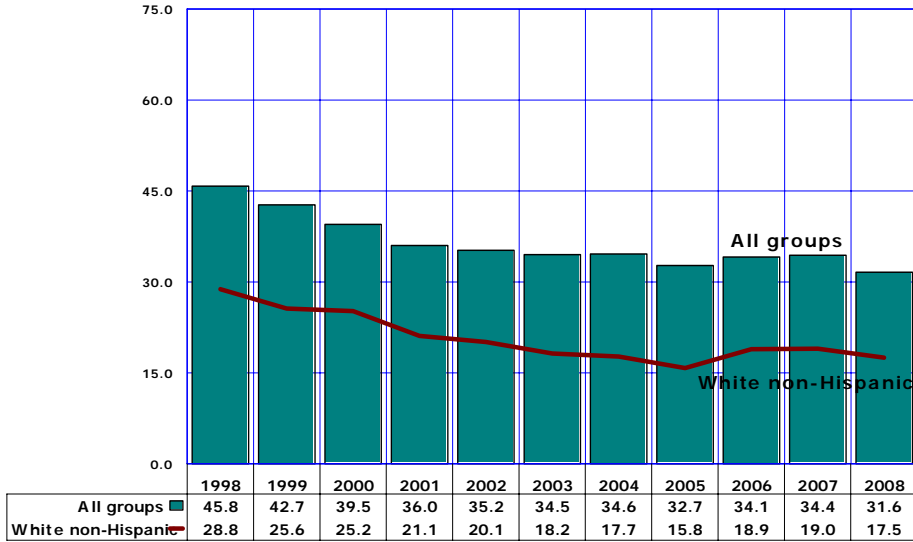
**Figure 4**  
Comparison of Pregnancy Rates by Year among Hispanic or Latinos and all Females 19 or Younger, Arizona, 1998-2008



Note: All rates are per 1,000 females in specified group.

KEY FINDINGS

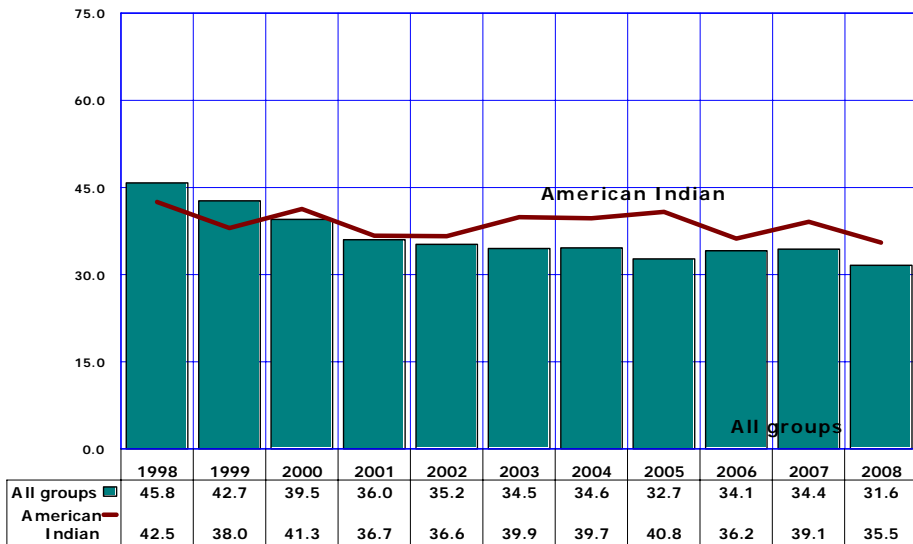
**Figure 5**  
**Comparison of Pregnancy Rates by Year among White non-Hispanics**  
**and all Females 19 or Younger, Arizona, 1998-2008**



The pregnancy rate for White non-Hispanics sharply increased by 19.6 percent in 2006 (Figure 5). The rate remained essentially unchanged at 19.0 in 2007 and then fell by 7.9 percent in 2008. In each year from 1998 to 2008, the pregnancy rates for White non-Hispanic females were lower than the average rates for all females 19 years or younger in Arizona.

Note: All rates are per 1,000 females in specified group.

**Figure 6**  
**Comparison of Pregnancy Rates by Year among American Indian or Alaska**  
**Natives and all Females 19 or Younger, Arizona, 1998-2008**



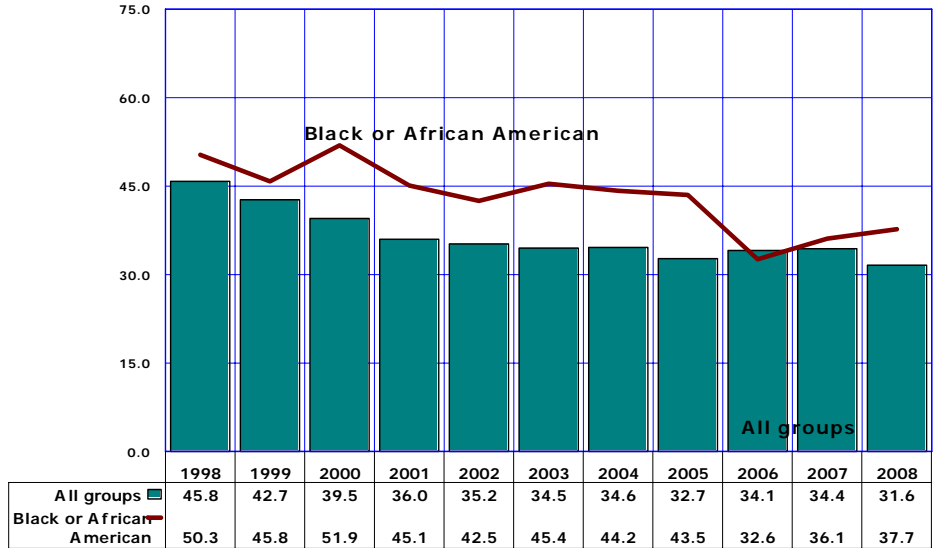
Despite some of the decreases noted between 1998 and 2008, the annual pregnancy rates among American Indian females 19 years or younger erratically varied from year to year (Figure 6). The American Indian rates were lower than the average in 1998 and 1999, but higher in 2000-2008.

Note: All rates are per 1,000 females in specified group.

KEY FINDINGS

**Figure 7**  
**Comparison of Pregnancy Rates by Year among Black or African Americans and all Females 19 or Younger, Arizona, 1998-2008**

The pregnancy rates for Black or African American females 19 years or younger increased from 32.6/1,000 in 2006 to 36.1/1,000 in 2007 and 37.7/1,000 in 2008 (Figure 7). As in 1998-2005 the pregnancy rates for Black or African American teenagers exceeded in 2007 and 2008 the pregnancy rate for all groups.

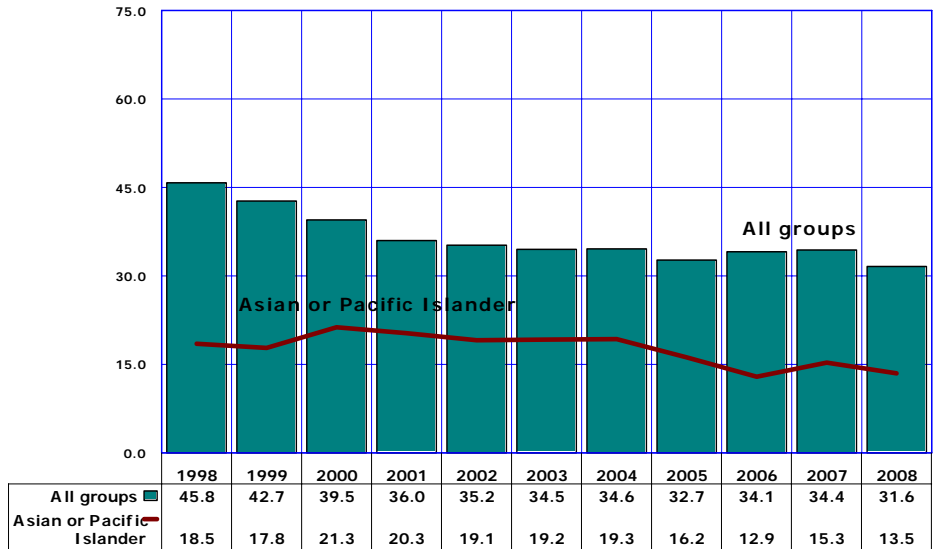


Note: All rates are per 1,000 females in specified group.

**Figure 8**  
**Comparison of Pregnancy Rates by Year among Asian or Pacific Islanders and all Females 19 or Younger, Arizona, 1998-2008**

In each year from 1998 to 2008, the pregnancy rates for Asian or Pacific Islander females 19 years or younger were substantially lower than the average rates among all females 19 years or younger in Arizona (Figure 8). In 2008, the Asian rate (13.5/1,000) was 57.3 percent lower than the rate for all groups (31.6/1,000).

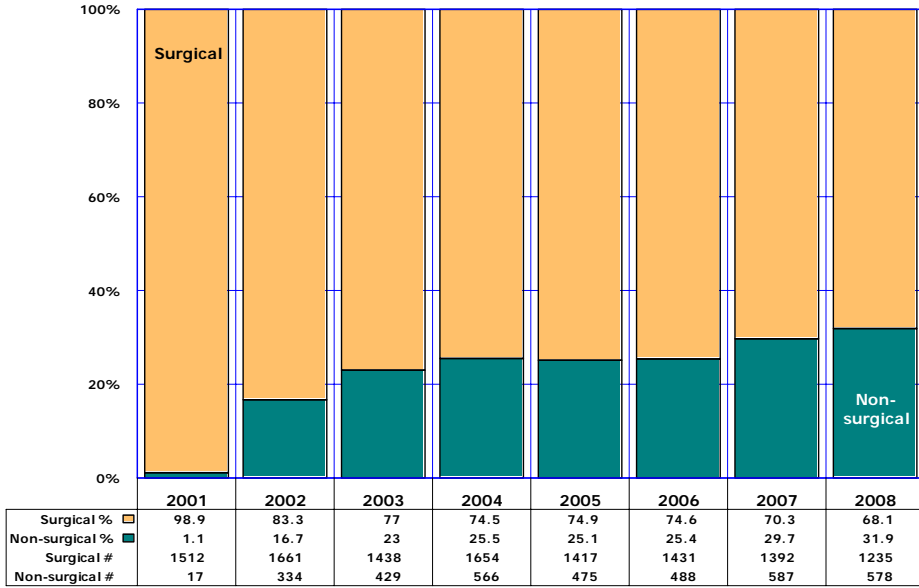
If the 2008 "risk for pregnancy" of Asian teens (i.e., their pregnancy rate) applied to all Arizona females 19 years or younger, the number of teen pregnancies in the State would have been reduced from 14,047 to approximately 6,000.



Note: All rates are per 1,000 females in specified group.

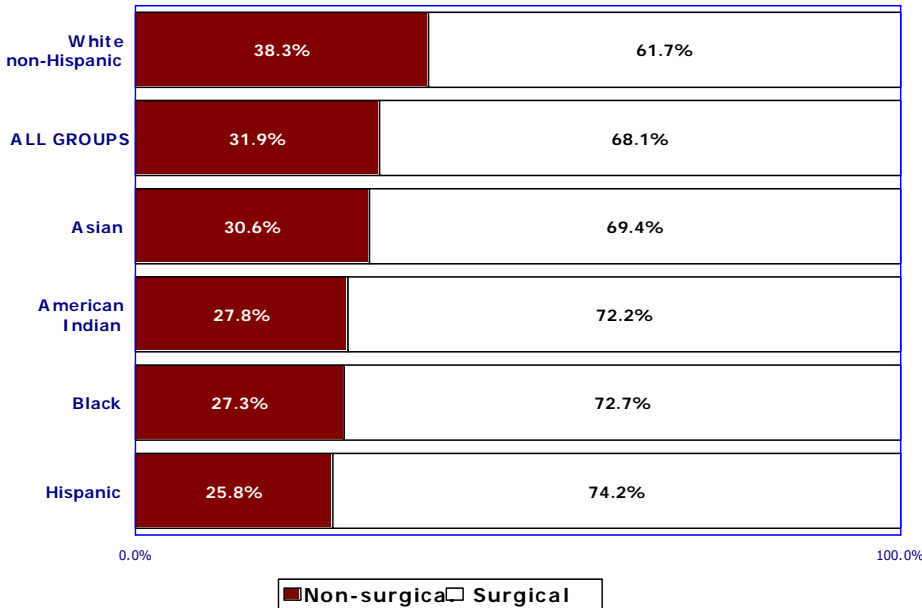
KEY FINDINGS

**Figure 9**  
**Proportional Contribution of Surgical and Non-Surgical Abortions**  
**by Year among Females 19 or Younger, Arizona, 2001-2008**



The proportion of non-surgical abortions to females 19 years or younger increased for the 3<sup>rd</sup> consecutive year from 25.1 percent in 2005 to 31.9 percent in 2008 (Figure 9).

**Figure 10**  
**Proportional Contribution of Non-Surgical and Surgical Abortions by**  
**Race/Ethnicity among Females 19 or Younger, Arizona, 2008**



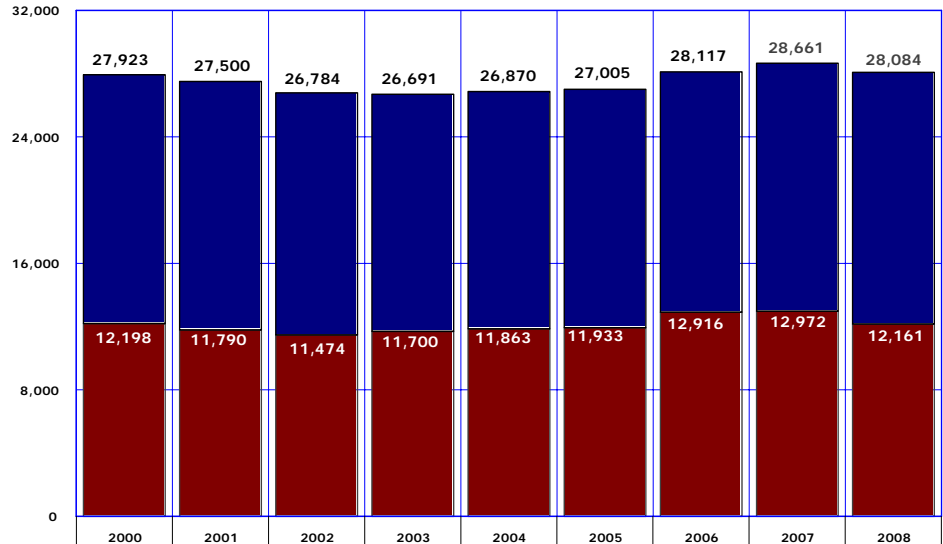
Only among White non-Hispanic teens the proportion of non-surgical abortions exceeded the average for all groups (Figure 10). The ratios of reported non-surgical abortions among Hispanic and Black females were the lowest among ethnic groups.

Non-surgical: Mifepristone, Methotrexate, RU486, etc.

KEY FINDINGS

**Figure 11**  
**Cumulative Number of Mothers who were 19 or Younger in Arizona by Year, 2000-2008**

■ Gave birth that year   ■ Gave birth before and was still 19 years old or younger

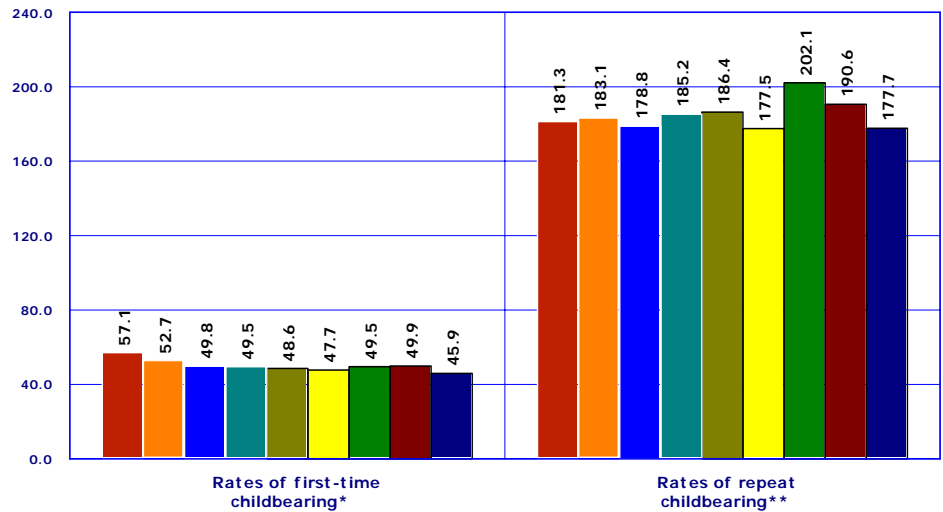


There were approximately 28,084 mothers under age 20 in Arizona in 2008, the 3<sup>rd</sup> highest number ever reported in the State. Among them there were the 12,161 who gave birth that year and the 15,923 who gave birth prior to 2008 and were still 19 years old or younger (Figure 11, Table 13). The cumulative number of mothers who were 19 years or younger in Arizona decreased by 2.0 percent from 28,661 in 2007.

\*See Table 13 for more details.

**Figure 12**  
**Rates of First and Repeat Births to Females 15-19 Years, Arizona, 2000-2008**

■ 2000 ■ 2001 ■ 2002 ■ 2003 ■ 2004 ■ 2005 ■ 2006 ■ 2007 ■ 2008



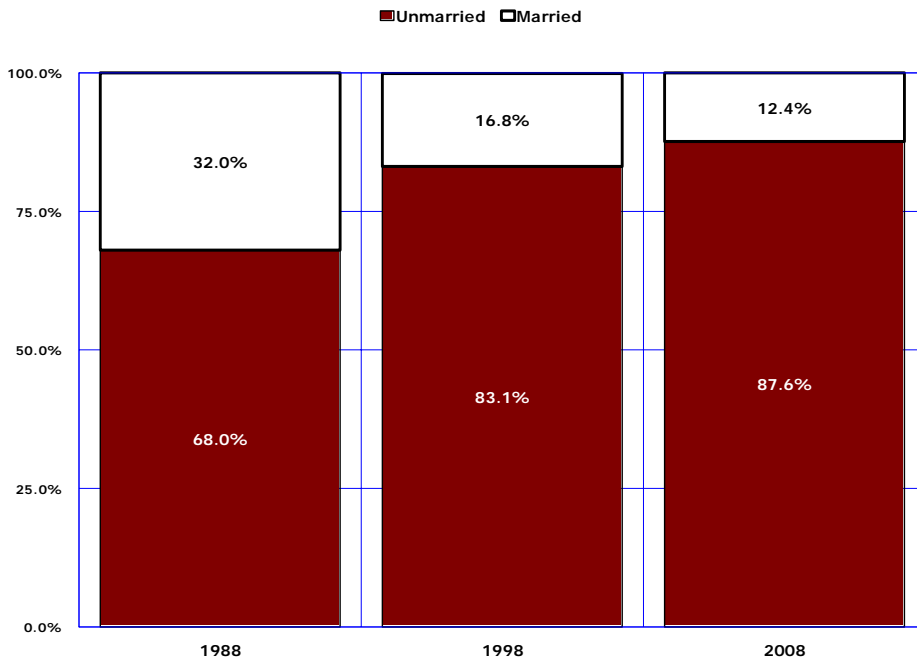
The first birth rate for childless teenagers has dropped 16.5 percent from 57.1 first-time births per 1,000 females 15-19 years old in 2000, to 47.7/1,000 in 2005. The first birth rate increased by 3.8 percent in 2006 and by an additional 0.8 percent in 2007 to 49.9/1,000. In 2008 the birth rate declined by 8.0 percent to 45.9/1,000 (Figure 12).

The repeat birth rates for teenagers who had already had a child decreased by 12.1 percent from 202.1 in 2006 to 190.6 in 2007 and 177.7 in 2008 (Figure 7). Eighteen percent of teenagers (177.7/1,000) who already had one child gave birth again in 2008, compared to twenty percent (202.1 /1,000) in 2006.

\* Number of first births per 1,000 females 15-19 years old who have not had a birth.  
 \*\*Number of repeat births per 1,000 females 15-19 years old who have had a previous birth.  
 See Appendix "How to compute rates of first and repeat childbearing."

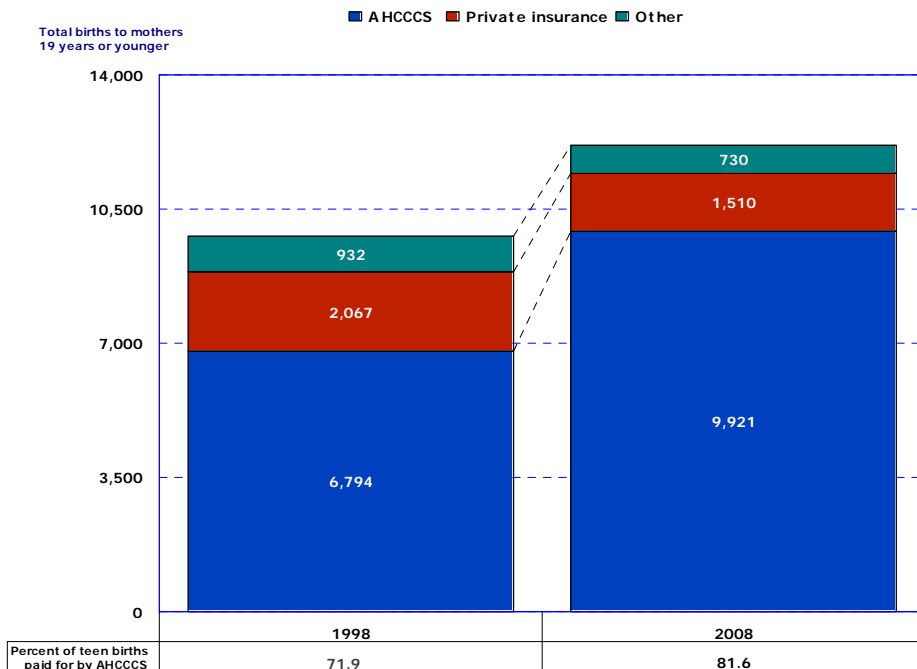


**Figure 13**  
Births to Mothers 19 or Younger by Marital Status, Arizona, 1988, 1998 and 2008



Unwed mothers have accounted for an increasing annual proportion of births throughout the 1980s and 1990s. Two decades ago, approximately 2 out of 3 teenage mothers were unmarried (Figure 13). In 2008, nonmarital births accounted for 87.6 percent of births to mothers 19 years or younger.

**Figure 14**  
Number of Births to Mothers 19 or Younger by Payee, Arizona, 1998 and 2008



The total number of births to mothers 19 years or younger increased by 4.0 percent from 11,695 in 1998 to 12,161 in 2008 (Table 1). In contrast, the number of teen births paid for by the Arizona Health Care Cost Containment System (AHCCCS, the State's Medicaid program) increased by 46.0 percent from 6,794 in 1998 to 9,921 in 2008.

In 2008, the Arizona Health Care Cost Containment System paid for 81.6 percent of the deliveries to mothers 19 or younger (Table 23), compared to 71.9 percent in 1998 (Figure 14).

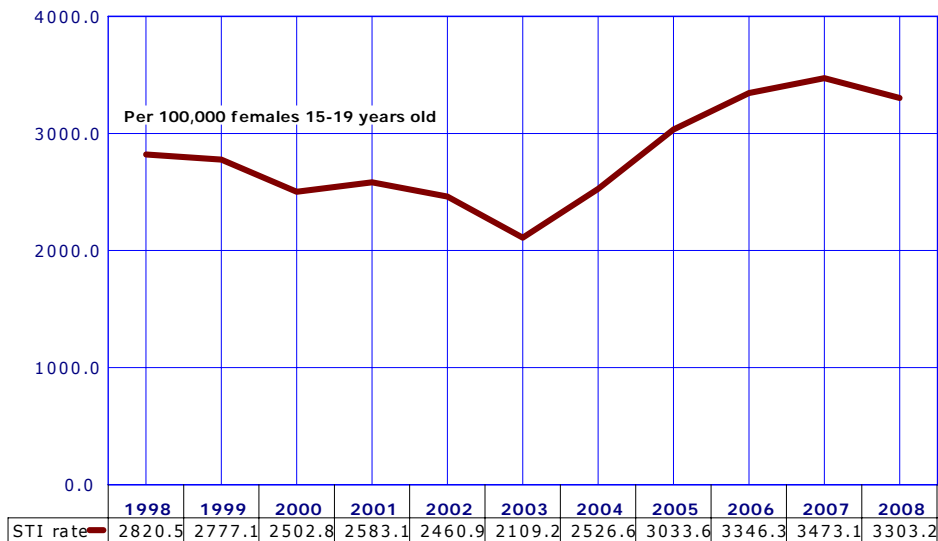
The National Campaign to Prevent Teen and Unplanned Pregnancy ([www.teenpregnancy.org](http://www.teenpregnancy.org)) estimated that in 2004, teen childbearing cost taxpayers an average of \$1,430 per teen mother annually. Since there were approximately 28,084 mothers under age 20 in Arizona in 2008 (Figure 11), this per capita cost of teen childbearing translates into at least \$40,160,200 (in 2004 dollars) expended on public assistance, health care, and child welfare in Arizona that year.

KEY FINDINGS

In each year from 2006 to 2008, the total number of sexually transmitted infections (STI) among females aged 19 or younger exceeded 7,400 (Table 15) compared to approximately 4,500 reported in 1998. Females aged 15-19 years accounted for 96.3 percent of all sexually transmitted infections in 2008. The rate of STI among females 15-19 years old increased by 64.7 percent from 2109.2 cases per 100,000 in 2003 to 3473.1/100,000 in 2007 and then declined to a rate of 3303.2/100,000 in 2008.

These STIs include *chlamydia* and *syphilis*. *Chlamydia* can cause sterility in the affected mother and eye infections and pneumonia in the newborn. *Syphilis* can cause blindness, maternal and/or infant death.

**Figure 15**  
Trends in the Incidence of Sexually Transmitted Infections\* among Females 15-19 Years, Arizona, 1998-2008



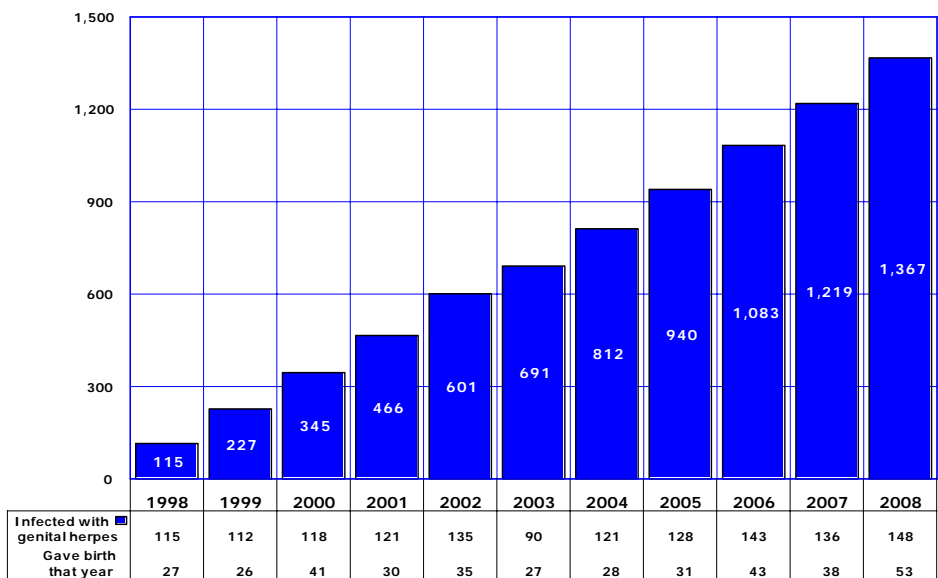
\* The sum of annually reported cases of gonorrhea, chlamydia, genital herpes and early syphilis.  
Source: Bureau of Epidemiology and Disease Control Services, Office of Infectious Disease Services.

**Figure 16**  
Cumulative Number of Cases of Genital Herpes among Females 15-19 Years, Arizona, 1998-2008

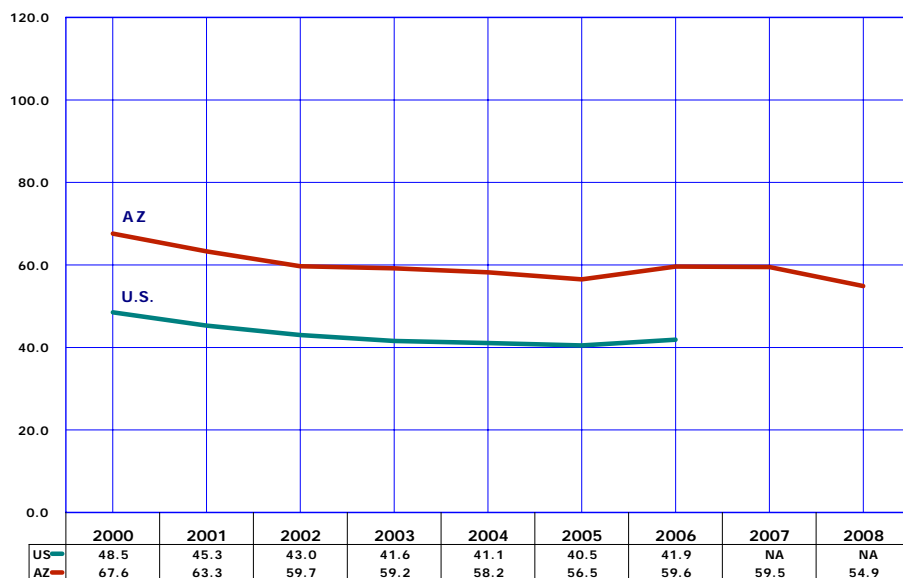
Unlike gonorrhea or chlamydia, genital herpes cannot be cured. Since genital herpes is not a fatal disease, new cases arising each year may add to the pool of people infected with the disease who can then transmit the disease to others.

Assuming that females 15-19 years old reported with genital herpes since 1998 have not died or left the State, the 2008 prevalence of this disease based on 1,367 cases (Figure 16) would be 625.5/100,000. In other words, one in every 160 females aged 15-19 years may be infected.

Genital herpes also is a threat to newborns. Out of 148 females aged 15-19 years who were diagnosed with genital herpes in 2008, 53 (or 35.8 percent) also gave birth that year (Figure 16, Table 15).



**Figure 17**  
**Birth Rates for Teenagers 15-19 Years, Nationally, 2000-2006 and**  
**Arizona, 2000-2008**



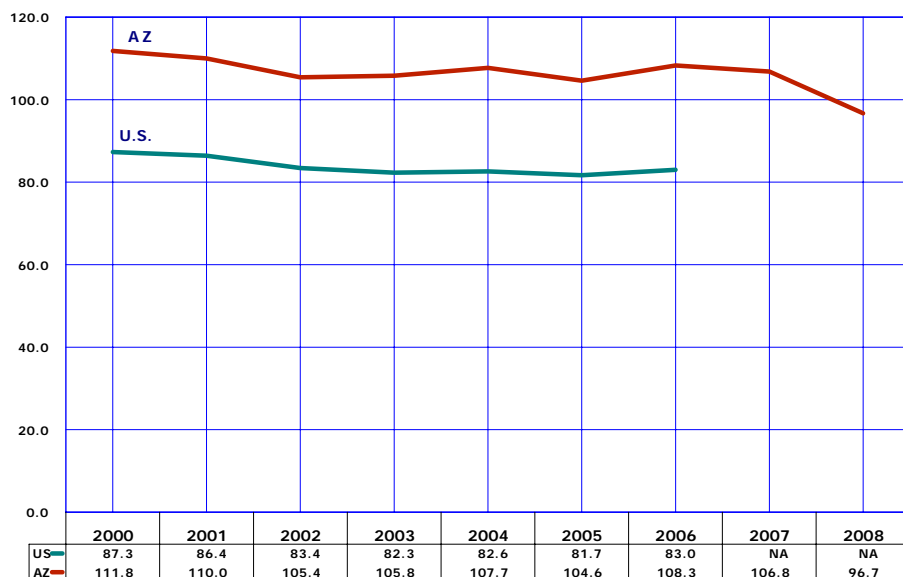
In each year from 2000 to 2006 birth rates for Arizona teenagers 15-19 years old exceeded by no less than 38.8 percent the rates of their national peers (Figure 17, Table 11; the 2006 rate is the latest one available nationally).

In Arizona, Hispanic or Latino females 15-19 years old, a high-fertility group, accounted for 32.9 percent of females aged 15-19 years in 2006; twice their proportional representation of 16.8 percent nationally.\* A high proportional representation of Hispanic or Latino females in Arizona puts upward pressure on the overall teen birth rate.

\*Based on data in Table 4 in: Kristin Anderson Moore, Teen Births: examining the Recent Increase. The national campaign to Prevent Teen and Unplanned Pregnancy. October 2008. Available online at: [www.thenationalcampaign.org/resources/birthdata](http://www.thenationalcampaign.org/resources/birthdata)

The number of births per 1,000 females 15-19 years old.

**Figure 18**  
**Birth Rates for Hispanic or Latino Teenagers 15-19 Years, Nationally,**  
**2000-2006 and Arizona, 2000-2008**



In 2006, Hispanics or Latinos aged 15-19 years disproportionately accounted for 59.7 percent of births to mothers in this age group in Arizona compared to 33.5 percent nationally.

In her analysis of the recent (2006) increase in teen births, Kristin Anderson Moore points out that "given high levels of immigration from Mexico and teen birth rates in Mexico of 80.6 in 2006 (...), immigration from Mexico represents a possible explanation". Teen birth rate in Mexico, quoted above, is similar to the U.S. rates for Hispanic or Latino teenagers. What is puzzling is that the birth rates of Arizona Hispanic teens exceed, consistently and substantially, not only the corresponding U.S. rates but also the teen birth rate in Mexico.

\* Page 4 in: Kristin Anderson Moore, Teen Births: examining the Recent Increase. The national campaign to Prevent Teen and Unplanned Pregnancy. October 2008.

The number of births per 1,000 females 15-19 years old.



TEENAGE PREGNANCY, ARIZONA, 1998-2008

# DATA TABLES

**TABLE 1  
PREGNANCIES AND PREGNANCY OUTCOME BY AGE GROUP AND YEAR,  
FEMALES 19 OR YOUNGER, ARIZONA, 1998-2008**

Pregnancy outcome by year	Total females 19 years or younger	Under 15 years	15-19 years old		
			Total	15-17 years	18-19 years
<b>ALL PREGNANCIES</b>					
1998	14,532	316	14,216	5,482	8,734
1999	14,095	303	13,792	4,993	8,799
2000	14,287	278	14,009	5,016	8,993
2001	13,429	253	13,170	4,661	8,515
2002	13,572	255	13,317	4,696	8,621
2003	13,654	272	13,382	4,755	8,627
2004	14,163	233	13,930	4,955	8,975
2005	13,898	239	13,659	4,790	8,869
2006	14,918	242	14,676	5,105	9,571
2007	15,038	325	14,713	4,975	9,738
2008	14,047	230	13,817	4,740	9,077
<b>LIVE BIRTHS</b>					
1998	11,695	234	11,461	4,397	7,064
1999	11,963	238	11,725	4,236	7,489
2000	12,189	216	11,973	4,284	7,689
2001	11,790	198	11,592	4,080	7,512
2002	11,474	206	11,268	3,952	7,316
2003	11,700	211	11,489	4,110	7,379
2004	11,863	188	11,675	4,227	7,448
2005	11,933	185	11,748	4,179	7,569
2006	12,916	170	12,746	4,450	8,296
2007	12,972	180	12,792	4,361	8,431
2008	12,161	161	12,000	4,151	7,849
<b>ABORTIONS</b>					
1998	2,735	78	2,657	1,046	1,611
1999	2,046	60	1,986	727	1,259
2000	1,988	57	1,931	684	1,247
2001	1,528	46	1,482	540	942
2002	1,995	44	1,951	705	1,246
2003	1,867	60	1,807	614	1,193
2004	2,220	44	2,176	703	1,473
2005	1,892	54	1,838	582	1,256
2006	1,919	69	1,850	624	1,226
2007	1,979	142	1,837	576	1,261
2008	1,813	67	1,746	567	1,179
<b>FETAL LOSSES</b>					
1998	102	4	98	39	59
1999	85	5	80	29	51
2000	110	5	105	48	57
2001	111	9	102	41	61
2002	103	5	98	39	59
2003	87	1	86	31	55
2004	80	1	79	25	54
2005	73	0	73	29	44
2006	83	3	80	31	49
2007	87	3	84	38	46
2008	73	2	71	22	49

**TABLE 2**  
**PREGNANCY RATES<sup>1</sup> BY PREGNANCY OUTCOME, AGE GROUP AND YEAR,**  
**FEMALES 19 OR YOUNGER, ARIZONA, 1998-2008**

Pregnancy outcome by year	Total females 19 years or younger	Under 15 years	15-19 years old		
			Total	15-17 years	18-19 years
<b>ALL PREGNANCIES</b>					
1998	45.8	2.0	91.7	58.6	142.1
1999	42.7	1.8	85.7	51.5	137.6
2000	39.5	1.5	79.1	48.1	123.6
2001	36.0	1.3	72.0	43.2	112.2
2002	35.2	1.3	70.6	42.2	111.2
2003	34.5	1.4	68.9	41.6	108.2
2004	34.6	1.1	69.4	42.0	108.7
2005	32.7	1.1	65.6	39.1	103.6
2006	34.1	1.1	68.7	39.0	115.6
2007	34.4	1.5	68.4	36.9	121.4
2008	31.6	1.0	63.2	34.6	111.3
<b>LIVE BIRTHS</b>					
1998	36.9	1.4	73.9	47.0	114.9
1999	36.2	1.4	72.9	43.7	117.1
2000	33.7	1.2	67.6	41.1	105.7
2001	31.6	1.0	63.3	37.8	99.9
2002	29.8	1.0	59.7	35.5	94.3
2003	29.5	1.0	59.2	35.9	92.5
2004	29.0	0.9	58.2	35.8	90.2
2005	28.1	0.9	56.5	34.1	88.4
2006	29.6	0.8	59.6	34.0	100.2
2007	29.7	0.8	59.5	32.3	105.1
2008	27.4	0.7	54.9	30.3	96.3
<b>ABORTIONS</b>					
1998	8.6	0.5	17.1	11.2	26.2
1999	6.1	0.3	12.3	7.5	19.7
2000	5.5	0.3	10.9	6.6	17.1
2001	4.1	0.2	8.1	5.0	12.5
2002	5.2	0.2	10.3	6.3	16.1
2003	4.7	0.3	9.3	5.4	15.0
2004	5.4	0.2	10.8	6.0	17.8
2005	4.5	0.2	8.8	4.8	14.7
2006	4.4	0.3	8.7	4.8	14.8
2007	4.5	0.6	8.5	4.3	15.7
2008	4.1	0.3	8.0	4.1	14.5
<b>FETAL LOSSES</b>					
1998	0.3	0.0	0.6	0.4	1.0
1999	0.3	0.0	0.5	0.3	0.8
2000	0.3	0.0	0.6	0.5	0.8
2001	0.3	0.0	0.6	0.4	0.8
2002	0.3	0.0	0.5	0.4	0.8
2003	0.2	0.0	0.4	0.3	0.7
2004	0.2	0.0	0.4	0.2	0.7
2005	0.2	0.0	0.4	0.2	0.5
2006	0.2	0.0	0.4	0.2	0.6
2007	0.2	0.0	0.4	0.3	0.6
2008	0.2	0.0	0.3	0.2	0.6

<sup>1</sup> The number of pregnancies (live births + abortions + fetal deaths) per 1,000 females in specified age group.

0.0: Quantity more than zero but less than 0.05.

**TABLE 3  
LIVE BIRTHS TO FEMALES 19 OR YOUNGER BY AGE GROUP, RACE/ETHNICITY  
AND YEAR, ARIZONA, 1998-2008**

Race/ethnic group and year	Total, females 19 years or younger	Under 15 years	15-19 years		
			Total	15-17 years	18-19 years
<b>WHITE NON-HISPANIC</b>					
1998	3,843	38	3,805	1,261	2,544
1999	3,869	31	3,838	1,115	2,723
2000	3,759	38	3,721	1,040	2,681
2001	3,396	34	3,362	926	2,436
2002	3,064	23	3,041	824	2,217
2003	2,970	23	2,947	782	2,165
2004	2,806	17	2,789	747	2,042
2005	2,744	17	2,727	711	2,016
2006	3,209	19	3,190	852	2,338
2007	3,100	26	3,074	779	2,295
2008	2,993	15	2,978	769	2,209
<b>HISPANIC OR LATINO</b>					
1998	5,951	142	5,809	2,419	3,390
1999	6,161	149	6,012	2,415	3,597
2000	6,548	144	6,404	2,567	3,837
2001	6,648	132	6,516	2,552	3,964
2002	6,585	147	6,438	2,507	3,931
2003	6,792	146	6,646	2,600	4,046
2004	7,138	137	7,001	2,779	4,222
2005	7,188	137	7,051	2,721	4,330
2006	7,738	123	7,615	2,923	4,692
2007	7,782	115	7,667	2,892	4,775
2008	7,168	111	7,057	2,724	4,333
<b>BLACK OR AFRICAN AMERICAN</b>					
1998	586	16	570	223	347
1999	603	14	589	222	367
2000	572	12	560	198	362
2001	545	13	532	193	339
2002	468	12	456	152	304
2003	549	3	546	204	342
2004	540	12	528	180	348
2005	569	8	561	199	362
2006	601	7	594	187	407
2007	621	12	609	195	414
2008	656	12	644	203	441
<b>AMERICAN INDIAN OR ALASKA NATIVE</b>					
1998	1,122	31	1,091	429	662
1999	1,050	38	1,012	389	623
2000	1,089	20	1,069	405	664
2001	1,013	17	996	348	648
2002	1,039	18	1,021	374	647
2003	1,141	37	1,104	434	670
2004	1,142	21	1,121	452	669
2005	1,204	21	1,183	478	705
2006	1,216	19	1,197	430	767
2007	1,285	26	1,259	445	814
2008	1,185	22	1,163	408	755
<b>ASIAN OR PACIFIC ISLANDER</b>					
1998	73	1	72	17	55
1999	108	1	107	28	79
2000	100	1	99	29	70
2001	104	0	104	29	75
2002	96	1	95	19	76
2003	107	1	106	38	68
2004	92	1	91	25	66
2005	96	1	95	28	67
2006	92	1	91	28	63
2007	103	0	103	31	72
2008	113	1	112	26	86



**TABLE 4  
ABORTIONS TO FEMALES 19 OR YOUNGER BY AGE GROUP, RACE/ETHNICITY  
AND YEAR, ARIZONA, 1998-2008**

Race/ethnic group and year	Total, females 19 years or younger	Under 15 years	15-19 years		
			Total	15-17 years	18-19 years
<b>WHITE NON-HISPANIC</b>					
1998	1,480	38	1,442	563	879
1999	981	26	955	369	586
2000	1,020	25	995	342	653
2001	746	16	730	262	458
2002	1,010	20	990	367	623
2003	914	18	896	304	592
2004	1,095	19	1,076	341	735
2005	867	15	852	278	574
2006	917	28	889	296	593
2007	982	71	911	282	629
2008	841	21	820	266	554
<b>HISPANIC OR LATINO</b>					
1998	747	29	718	292	426
1999	540	16	524	183	341
2000	610	22	588	228	360
2001	534	22	512	199	313
2002	650	15	635	235	400
2003	630	27	603	197	406
2004	784	20	764	247	517
2005	522	21	501	151	350
2006	609	24	585	193	392
2007	710	44	666	210	456
2008	561	34	527	173	354
<b>BLACK OR AFRICAN AMERICAN</b>					
1998	147	4	143	51	92
1999	96	7	89	27	62
2000	115	5	110	42	68
2001	71	3	68	28	40
2002	118	4	114	30	84
2003	107	6	101	40	61
2004	125	1	124	46	78
2005	114	5	109	32	77
2006	124	9	115	48	67
2007	136	13	123	42	81
2008	143	5	138	43	95
<b>AMERICAN INDIAN OR ALASKA NATIVE</b>					
1998	53	0	53	22	31
1999	56	3	53	17	36
2000	43	2	41	13	28
2001	29	3	26	7	19
2002	40	3	37	12	25
2003	68	3	65	25	40
2004	65	1	64	17	47
2005	76	4	72	21	51
2006	55	1	54	24	30
2007	63	8	55	22	33
2008	54	2	52	17	35
<b>ASIAN OR PACIFIC ISLANDER</b>					
1998	51	0	51	20	31
1999	28	1	27	10	17
2000	37	0	37	11	26
2001	30	0	30	15	15
2002	34	0	34	10	24
2003	27	1	26	7	19
2004	56	1	55	19	36
2005	35	0	35	10	25
2006	40	3	37	11	26
2007	63	4	59	8	51
2008	36	2	34	12	22

**TABLE 5  
NUMBER OF PREGNANCIES<sup>1</sup> BY PREGNANCY OUTCOME, RACE/ETHNICITY AND YEAR  
AMONG FEMALES 17 OR YOUNGER WITH RATES<sup>2</sup>, ARIZONA, 1998-2008**

Race/ethnicity Pregnancy outcome	1998	1999	2000	2001	2002	2003	2004	2005	2006	2007	2008	2008 Rates
<b>WHITE<sup>3</sup> NON-HISPANIC, total:</b>	1,918	1,566	1,462	1,250	1,245	1,131	1,129	1,028	1,204	1,165	1,074	<b>6.1</b>
Births	1,299	1,146	1,078	960	847	805	764	728	871	805	784	<b>4.4</b>
Abortions	601	395	367	278	387	322	360	293	324	353	287	<b>1.6</b>
<b>HISPANIC OR LATINO, total:</b>	2,882	2,763	2,991	2,930	2,926	2,993	3,198	3,043	3,281	3,286	3,057	<b>23.4</b>
Births	2,561	2,564	2,711	2,684	2,654	2,746	2,916	2,858	3,046	3,007	2,835	<b>21.7</b>
Abortions	321	199	250	221	250	224	267	172	217	254	207	<b>1.6</b>
<b>BLACK OR AFRICAN AMERICAN, total:</b>	263	275	227	240	207	256	241	247	255	268	266	<b>14.8</b>
Births	239	236	210	206	164	207	192	207	194	207	215	<b>11.9</b>
Abortions	55	34	47	31	34	46	47	37	57	55	48	<b>2.7</b>
<b>AMERICAN INDIAN OR ALASKA NATIVE, total:</b>	530	450	476	384	409	501	495	530	477	504	452	<b>16.0</b>
Births	460	427	425	365	392	471	473	499	449	471	430	<b>15.3</b>
Abortions	22	20	15	10	15	28	18	25	25	30	19	<b>0.7</b>
<b>ASIAN OR PACIFIC ISLANDER, total:</b>	43	40	41	44	30	47	46	39	43	43	41	<b>4.5</b>
Births	18	29	30	29	20	39	26	29	29	31	27	<b>3.0</b>
Abortions	20	11	11	15	10	8	20	10	14	12	14	<b>1.6</b>
<b>ALL RACE/ETHNIC GROUPS<sup>4</sup>, total:</b>	5,798	5,296	5,294	4,914	4,951	5,027	5,188	5,029	5,347	5,300	4,970	<b>13.7</b>
Births	4,631	4,474	4,500	4,278	4,158	4,321	4,415	4,364	4,620	4,541	4,312	<b>11.9</b>
Abortions	1,124	787	741	586	749	674	747	636	693	718	634	<b>1.7</b>
<b>Pregnancy rate, total:</b>	<b>22.7</b>	<b>19.9</b>	<b>18.4</b>	<b>16.5</b>	<b>16.1</b>	<b>15.9</b>	<b>15.9</b>	<b>14.8</b>	<b>15.1</b>	<b>14.8</b>	<b>13.7</b>	
<b>Fertility rate<sup>5</sup></b>	<b>18.1</b>	<b>16.8</b>	<b>15.6</b>	<b>14.3</b>	<b>13.5</b>	<b>13.7</b>	<b>13.5</b>	<b>12.9</b>	<b>13.0</b>	<b>12.7</b>	<b>11.9</b>	
<b>Abortion rate</b>	<b>4.4</b>	<b>3.0</b>	<b>2.6</b>	<b>2.0</b>	<b>2.4</b>	<b>2.1</b>	<b>2.3</b>	<b>1.9</b>	<b>2.0</b>	<b>2.0</b>	<b>1.7</b>	

<sup>1</sup>Fetal deaths are included in the total counts of pregnancies.

<sup>2</sup>All rates per 1,000 females 10-17 years old.

<sup>3</sup>Not of Hispanic origin.

<sup>4</sup>Includes other and unspecified ethnicity.

<sup>5</sup>Number of births per 1,000 females 10-17 years old.

**TABLE 6  
NUMBER OF PREGNANCIES<sup>1</sup> BY PREGNANCY OUTCOME, RACE/ETHNICITY AND YEAR  
AMONG FEMALES 15-17 YEARS OLD WITH RATES<sup>2</sup>, ARIZONA, 1998-2008**

Race/ethnicity Pregnancy outcome	1998	1999	2000	2001	2002	2003	2004	2005	2006	2007	2008	2008 Rates
<b>WHITE<sup>3</sup> NON-HISPANIC, total:</b>	1,841	1,505	1,397	1,197	1,202	1,090	1,093	996	1,157	1,067	1,038	14.9
Births	1,261	1,115	1,040	926	824	782	747	711	852	779	769	11.1
Abortions	563	369	342	262	367	304	341	278	296	282	266	3.8
<b>HISPANIC OR LATINO, total:</b>	2,711	2,598	2,823	2,771	2,761	2,819	3,040	2,885	3,131	3,126	2,911	62.7
Births	2,419	2,415	2,567	2,552	2,507	2,600	2,779	2,721	2,923	2,892	2,724	58.7
Abortions	292	183	228	199	235	197	247	151	193	210	173	3.7
<b>BLACK OR AFRICAN AMERICAN, total:</b>	276	254	242	224	189	247	228	234	239	242	248	37.2
Births	223	222	198	193	152	204	180	199	187	195	203	30.5
Abortions	51	27	42	28	30	40	46	32	48	42	43	6.5
<b>AMERICAN INDIAN OR ALASKA NATIVE, total:</b>	464	408	421	363	388	461	473	505	457	470	428	38.1
Births	429	389	405	348	374	434	452	478	430	445	408	36.3
Abortions	22	17	13	7	12	25	17	21	24	22	17	1.5
<b>ASIAN OR PACIFIC ISLANDER, total:</b>	42	38	40	44	29	45	44	38	39	39	38	11.6
Births	17	28	29	29	19	38	25	28	28	31	26	7.9
Abortions	20	10	11	15	10	7	19	10	11	8	12	3.7
<b>ALL RACE/ETHNIC GROUPS<sup>4</sup>, total:</b>	5,482	4,993	5,016	4,661	4,696	4,755	4,955	4,790	5,105	4,975	4,740	34.6
Births	4,397	4,236	4,284	4,080	3,952	4,110	4,227	4,179	4,450	4,361	4,151	30.3
Abortions	1,046	727	684	540	705	614	703	582	624	576	567	4.1
<b>Pregnancy rate, total:</b>	<b>58.6</b>	<b>51.5</b>	<b>48.1</b>	<b>43.2</b>	<b>42.2</b>	<b>41.6</b>	<b>42.0</b>	<b>39.1</b>	<b>39.0</b>	<b>36.9</b>	<b>34.6</b>	
<b>Fertility rate<sup>5</sup></b>	<b>47.0</b>	<b>43.7</b>	<b>41.1</b>	<b>37.8</b>	<b>35.5</b>	<b>35.9</b>	<b>35.8</b>	<b>34.1</b>	<b>34.0</b>	<b>32.3</b>	<b>30.3</b>	
<b>Abortion rate</b>	<b>11.2</b>	<b>7.5</b>	<b>6.6</b>	<b>5.0</b>	<b>6.3</b>	<b>5.4</b>	<b>6.0</b>	<b>4.8</b>	<b>4.8</b>	<b>4.3</b>	<b>4.1</b>	

<sup>1</sup>Fetal deaths are included in the total counts of pregnancies.

<sup>2</sup>All rates per 1,000 females 15-17 years old.

<sup>3</sup>Not of Hispanic origin.

<sup>4</sup>Includes other and unspecified ethnicity.

<sup>5</sup>Number of births per 1,000 females 15-17 years old.

**TABLE 7  
NUMBER OF PREGNANCIES<sup>1</sup> BY PREGNANCY OUTCOME, RACE/ETHNICITY AND YEAR  
AMONG FEMALES 18-19 YEARS OLD WITH RATES<sup>2</sup>, ARIZONA, 1998-2008**

Race/ethnicity Pregnancy outcome	1998	1999	2000	2001	2002	2003	2004	2005	2006	2007	2008	2008 Rates
<b>WHITE<sup>3</sup> NON-HISPANIC, total:</b>	3,457	3,349	3,352	2,925	2,857	2,772	2,795	2,603	2,944	2,936	2,778	<b>65.3</b>
Births	2,544	2,723	2,681	2,436	2,217	2,165	2,042	2,016	2,338	2,295	2,209	<b>51.9</b>
Abortions	879	586	653	468	623	592	735	574	593	629	554	<b>13.0</b>
<b>HISPANIC OR LATINO, total:</b>	3,816	3,938	4,222	4,309	4,361	4,483	4,767	4,705	5,115	5,259	4,707	<b>177.2</b>
Births	3,390	3,597	3,837	3,964	3,931	4,046	4,222	4,330	4,692	4,775	4,333	<b>163.1</b>
Abortions	426	341	360	313	400	406	517	350	392	456	354	<b>13.3</b>
<b>BLACK OR AFRICAN AMERICAN, total:</b>	442	434	433	382	398	408	430	441	476	498	546	<b>155.7</b>
Births	347	367	362	339	304	342	348	362	407	414	441	<b>125.8</b>
Abortions	92	62	68	40	84	61	78	77	67	81	95	<b>27.1</b>
<b>AMERICAN INDIAN OR ALASKA NATIVE, total:</b>	710	665	700	669	673	714	720	759	800	849	794	<b>115.2</b>
Births	662	623	664	648	647	670	669	705	767	814	755	<b>109.6</b>
Abortions	31	36	28	19	25	40	47	51	30	33	35	<b>5.1</b>
<b>ASIAN OR PACIFIC ISLANDER, total:</b>	86	96	96	90	100	87	102	93	89	124	108	<b>53.5</b>
Births	55	79	70	75	76	68	66	67	63	72	86	<b>42.6</b>
Abortions	31	17	26	15	24	19	36	25	26	51	22	<b>10.9</b>
<b>ALL RACE/ETHNIC GROUPS<sup>4</sup>, total:</b>	8,734	8,799	8,993	8,515	8,621	8,627	8,975	8,869	9,571	9,738	9,077	<b>111.3</b>
Births	7,064	7,489	7,689	7,512	7,316	7,379	7,448	7,569	8,296	8,431	7,849	<b>96.3</b>
Abortions	1,611	1,259	1,247	942	1,246	1,193	1,473	1,256	1,226	1,261	1,179	<b>14.5</b>
<b>Pregnancy rate, total:</b>	<b>142.1</b>	<b>137.6</b>	<b>123.6</b>	<b>113.2</b>	<b>111.2</b>	<b>108.2</b>	<b>108.7</b>	<b>103.6</b>	<b>115.6</b>	<b>121.4</b>	<b>111.3</b>	
<b>Fertility rate<sup>5</sup></b>	<b>114.9</b>	<b>117.1</b>	<b>105.7</b>	<b>99.9</b>	<b>94.3</b>	<b>92.5</b>	<b>90.2</b>	<b>88.4</b>	<b>100.2</b>	<b>105.1</b>	<b>96.3</b>	
<b>Abortion rate</b>	<b>26.2</b>	<b>19.7</b>	<b>17.1</b>	<b>12.5</b>	<b>16.1</b>	<b>15.0</b>	<b>17.8</b>	<b>14.7</b>	<b>14.8</b>	<b>15.7</b>	<b>14.5</b>	

<sup>1</sup>Fetal deaths are included in the total count of pregnancies.

<sup>2</sup>All rates per 1,000 females 18-19 years old.

<sup>3</sup>Not of Hispanic origin.

<sup>4</sup>Includes other and unspecified ethnicity.

<sup>5</sup>Number of births per 1,000 females 18-19 years old.

**TABLE 8  
NUMBER OF PREGNANCIES<sup>1</sup> BY PREGNANCY OUTCOME, RACE/ETHNICITY AND YEAR  
AMONG FEMALES 19 OR YOUNGER WITH RATES<sup>2</sup>, ARIZONA, 1998-2008**

Race/ethnicity Pregnancy outcome	1998	1999	2000	2001	2002	2003	2004	2005	2006	2007	2008	2008 Rates
<b>WHITE<sup>3</sup> NON-HISPANIC, total:</b>	5,375	4,915	4,814	4,175	4,102	3,903	3,924	3,631	4,148	4,101	3,852	17.5
Births	3,843	3,869	3,759	3,396	3,064	2,970	2,806	2,744	3,209	3,100	2,993	13.6
Abortions	1,480	981	1,020	746	1,010	914	1,095	867	917	982	841	3.8
<b>HISPANIC OR LATINO, total:</b>	6,698	6,701	7,213	7,239	7,287	7,476	7,965	7,748	8,396	8,545	7,764	49.4
Births	5,951	6,161	6,548	6,648	6,585	6,792	7,138	7,188	7,738	7,782	7,168	45.6
Abortions	747	540	610	534	650	630	784	522	609	710	561	3.6
<b>BLACK OR AFRICAN AMERICAN, total:</b>	644	669	620	622	605	664	671	688	731	766	812	37.7
Births	586	603	572	545	468	549	540	569	601	621	656	30.5
Abortions	147	96	115	71	118	107	125	114	124	136	143	6.6
<b>AMERICAN INDIAN OR ALASKA NATIVE, total:</b>	1,301	1,155	1,216	1,053	1,082	1,215	1,215	1,289	1,277	1,353	1,246	35.5
Births	1,122	1,050	1,089	1,013	1,039	1,141	1,142	1,204	1,216	1,285	1,185	33.8
Abortions	53	56	43	29	40	68	65	76	55	63	54	1.5
<b>ASIAN OR PACIFIC ISLANDER, total:</b>	129	136	137	134	130	134	148	132	132	167	149	13.5
Births	73	108	100	104	96	107	92	96	92	103	113	10.2
Abortions	51	28	37	30	34	27	56	35	40	63	36	3.3
<b>ALL RACE/ETHNIC GROUPS<sup>4</sup>, total:</b>	14,532	14,095	14,287	13,429	13,572	13,654	14,163	13,898	14,918	15,038	14,047	31.6
Births	11,695	11,963	12,189	11,790	11,474	11,700	11,863	11,933	12,916	12,972	12,161	27.4
Abortions	2,735	2,046	1,988	1,528	1,995	1,867	2,220	1,892	1,919	1,979	1,813	4.1
<b>Pregnancy rate, total:</b>	<b>45.8</b>	<b>42.7</b>	<b>39.5</b>	<b>36.0</b>	<b>35.2</b>	<b>34.5</b>	<b>34.6</b>	<b>32.7</b>	<b>34.1</b>	<b>34.4</b>	<b>31.6</b>	
<b>Fertility rate<sup>5</sup></b>	<b>36.9</b>	<b>36.2</b>	<b>33.7</b>	<b>31.6</b>	<b>29.8</b>	<b>29.5</b>	<b>29.0</b>	<b>28.1</b>	<b>29.6</b>	<b>29.7</b>	<b>27.4</b>	
<b>Abortion rate</b>	<b>8.6</b>	<b>6.2</b>	<b>5.5</b>	<b>4.1</b>	<b>5.2</b>	<b>4.7</b>	<b>5.4</b>	<b>4.5</b>	<b>4.4</b>	<b>4.5</b>	<b>4.1</b>	

<sup>1</sup>Fetal deaths are included in the total counts of pregnancies.

<sup>2</sup>All rates per 1,000 females 19 or less years old.

<sup>3</sup>Not of Hispanic origin.

<sup>4</sup>Includes other and unspecified ethnicity.

<sup>5</sup>Number of births per 1,000 females 19 or less years old.

**TABLE 9  
TRENDS IN PREGNANCY RATES\* BY COUNTY OF RESIDENCE AMONG FEMALES 10-17 AND 18-19 YEARS OLD,  
ARIZONA, 1998-2008**

	ARIZONA	APACHE	COCHISE	COCONINO	GILA	GRAHAM	GREENLEE	MARICOPA	MOHAVE	NAVAJO	PIMA	PINAL	SANTA CRUZ	YAVAPAI	YUMA	LA PAZ
<b>1998</b>	45.8	30.2	36.2	28.0	45.4	36.3	43.3	46.9	40.1	41.9	43.1	49.4	48.3	37.0	46.6	39.2
<b>1999</b>	42.7	23.9	35.6	30.2	41.4	29.3	34.9	44.6	40.1	40.4	38.8	44.9	41.7	33.7	46.3	29.2
<b>2000</b>	39.5	29.2	38.7	28.6	41.1	28.8	26.7	40.7	33.5	34.8	39.6	47.7	39.3	33.0	42.0	32.6
<b>2001</b>	36.0	21.6	34.3	30.3	43.2	33.8	18.3	37.2	31.4	26.7	36.0	43.7	33.0	26.3	36.7	36.8
<b>2002</b>	35.2	23.2	30.6	26.0	42.4	29.9	40.0	36.0	32.5	28.5	36.3	38.5	36.4	29.6	38.8	35.6
<b>2003</b>	34.5	30.8	31.5	26.9	42.8	27.5	26.0	36.0	30.9	29.6	32.0	38.1	30.0	25.3	40.6	32.2
<b>2004</b>	34.6	32.8	30.0	27.7	38.4	22.5	36.6	35.5	28.7	33.7	33.8	36.4	38.6	27.9	42.1	39.8
<b>2005</b>	32.7	25.9	30.0	27.7	38.8	20.9	31.0	33.9	32.1	33.1	30.6	33.5	30.7	25.7	37.0	49.8
<b>2006</b>	34.1	25.6	24.2	31.0	37.7	35.5	24.7	35.4	33.0	30.0	32.9	34.1	32.9	29.6	38.0	30.0
<b>2007</b>	34.4	27.5	29.1	33.2	41.7	40.1	25.4	35.4	31.9	33.7	30.5	37.4	32.2	33.0	37.8	50.9
<b>2008</b>	31.6	25.3	27.2	28.6	45.9	33.2	33.2	32.5	28.1	36.3	29.0	31.3	31.5	26.9	35.1	38.6
<b>1998</b>	142.1	105.7	115.5	77.6	130.5	111.1	94.0	148.0	139.1	138.0	123.8	159.9	136.9	111.7	156.6	135.7
<b>1999</b>	137.6	88.3	115.5	78.9	121.0	94.8	116.1	146.5	139.4	141.7	118.3	145.9	145.2	114.8	151.7	72.7
<b>2000</b>	135.8	109.9	124.5	74.7	167.3	74.1	123.8	127.8	139.7	154.1	104.7	161.0	132.1	124.9	149.8	127.1
<b>2001</b>	113.2	91.9	116.8	84.3	154.3	84.9	78.4	117.3	132.5	111.7	96.6	156.9	113.7	91.8	130.8	153.0
<b>2002</b>	111.1	100.7	104.4	68.9	151.5	78.4	161.9	114.2	131.5	121.5	96.7	130.2	137.7	115.9	133.4	127.0
<b>2003</b>	108.2	130.1	107.3	70.6	145.5	78.8	64.8	112.4	129.0	123.4	86.0	139.3	130.7	98.7	134.2	113.4
<b>2004</b>	108.7	141.6	106.7	76.9	164.3	57.7	173.1	110.9	112.8	141.3	93.7	121.0	147.2	99.3	135.6	153.8
<b>2005</b>	103.6	105.4	110.0	79.5	150.5	56.7	174.8	106.5	134.0	138.2	83.7	119.8	111.8	104.1	122.2	148.7
<b>2006</b>	115.6	87.9	71.1	84.0	139.8	95.6	69.0	125.0	142.1	99.4	95.8	129.3	108.5	109.2	122.8	63.0
<b>2007</b>	121.4	89.4	99.8	81.2	164.0	103.4	122.4	131.9	157.6	125.8	89.6	144.9	102.8	129.9	129.8	242.8
<b>2008</b>	111.3	89.5	92.4	72.2	165.9	94.7	133.3	120.0	135.7	135.7	86.5	121.8	111.6	100.1	121.7	156.1
<b>1998</b>	22.7	13.7	16.9	12.8	24.8	19.4	31.9	23.0	18.1	20.9	22.0	25.6	26.4	19.2	22.9	13.0
<b>1999</b>	19.9	9.6	15.8	15.1	22.1	13.7	16.3	21.0	17.4	17.9	17.6	22.3	17.1	13.8	20.9	18.6
<b>2000</b>	18.4	15.0	19.1	14.6	17.6	13.9	8.8	18.9	12.0	13.7	19.1	23.8	21.8	13.3	17.5	15.2
<b>2001</b>	16.5	9.2	15.5	13.9	22.5	17.0	7.2	17.2	10.9	11.7	16.9	19.8	17.8	12.3	15.3	15.2
<b>2002</b>	16.1	9.6	13.7	13.0	22.1	14.0	17.5	16.5	12.5	12.0	17.2	19.1	17.2	11.1	17.3	18.7
<b>2003</b>	15.9	13.4	14.3	13.6	23.7	10.7	18.8	16.9	11.1	13.0	14.6	16.8	11.1	9.5	19.3	17.2
<b>2004</b>	15.9	13.5	12.7	12.9	15.4	10.9	10.9	16.5	11.8	14.6	15.1	18.3	17.9	12.3	20.4	17.8
<b>2005</b>	14.8	11.9	11.7	12.1	18.2	9.0	6.6	15.7	11.5	14.4	14.0	14.9	15.2	8.6	17.1	30.7
<b>2006</b>	15.1	10.8	12.0	14.1	16.6	17.6	5.1	15.7	12.4	14.9	14.7	13.4	16.5	11.8	16.6	13.1
<b>2007</b>	14.8	12.5	12.0	16.3	16.2	19.3	8.8	15.3	10.7	14.4	13.6	16.4	17.7	12.8	16.0	15.8
<b>2008</b>	13.7	9.7	11.3	13.2	21.0	12.9	16.2	14.3	9.5	15.5	12.5	13.6	15.0	10.9	14.6	17.0

\* Number of pregnancies per 1,000 females in specified group.

**TABLE 10  
LIVE BIRTHS TO FEMALES 19 OR YOUNGER AS A PERCENTAGE OF TOTAL LIVE BIRTHS BY AREA, RACE/ETHNICITY  
AND YEAR, ARIZONA, 1998-2008**

Group	1998	1999	2000	2001	2002	2003	2004	2005	2006	2007	2008
<b>ARIZONA, TOTAL<sup>1</sup></b>											
# Births (all ages)	77,940	80,505	84,985	85,213	87,379	90,783	93,396	95,798	102,042	102,687	99,215
# Births to teenagers	11,695	11,963	12,189	11,790	11,474	11,700	11,863	11,933	12,916	12,972	12,161
% Births to teenagers	15.0	14.9	14.3	13.8	13.1	12.9	12.7	12.5	12.7	12.6	12.2
<b>URBAN COUNTIES<sup>2</sup></b>											
# Births (all ages)	65,825	68,611	72,596	73,319	74,851	77,905	79,951	82,141	87,910	88,266	85,263
# Births to teenagers	9,605	9,896	10,102	9,906	9,512	9,686	9,786	9,827	10,809	10,693	10,013
% Births to teenagers	14.6	14.4	13.9	13.5	12.7	12.4	12.2	12.0	12.3	12.1	11.7
<b>RURAL COUNTIES</b>											
# Births (all ages)	12,115	11,877	12,333	11,851	12,498	12,848	13,409	13,603	14,083	14,413	13,952
# Births to teenagers	2,090	2,067	2,083	1,882	1,959	2,014	2,074	2,103	2,100	2,279	2,148
% Births to teenagers	17.0	17.4	16.9	15.9	15.7	15.7	15.5	15.5	14.9	15.8	15.3
<b>WHITE NON-HISPANIC</b>											
# Births (all ages)	38,611	38,711	39,850	38,934	38,819	38,842	39,271	39,657	43,013	42,216	41,925
# Births to teenagers	3,843	3,869	3,759	3,396	3,064	2,970	2,806	2,744	3,209	3,100	2,993
% Births to teenagers	10.0	10.0	9.4	8.7	7.9	7.6	7.2	6.9	7.5	7.3	7.1
<b>HISPANIC OR LATINO</b>											
# Births (all ages)	28,824	30,784	33,893	35,103	36,089	39,101	40,822	42,156	44,862	45,731	42,639
# Births to teenagers	5,951	6,161	6,548	6,648	6,585	6,792	7,138	7,188	7,738	7,782	7,168
% Births to teenagers	20.7	20.0	19.3	18.9	18.2	17.4	17.5	17.0	17.2	17.0	16.8
<b>BLACK OR AFRICAN AMERICAN</b>											
# Births (all ages)	2,629	2,699	2,760	2,736	2,753	3,022	3,216	3,450	3,864	4,165	4,301
# Births to teenagers	586	603	572	545	468	549	540	569	601	621	656
% Births to teenagers	22.4	22.3	20.7	19.9	17.0	18.2	16.8	16.5	15.6	14.9	15.2
<b>AMERICAN INDIAN OR ALASKA NATIVE</b>											
# Births (all ages)	5,460	5,295	5,602	5,340	5,545	5,881	6,120	6,293	6,364	6,408	6,362
# Births to teenagers	1,122	1,050	1,089	1,013	1,039	1,141	1,142	1,204	1,216	1,285	1,185
% Births to teenagers	20.3	19.8	19.4	19.0	18.7	19.4	18.9	19.1	19.1	20.0	18.6
<b>ASIAN OR PACIFIC ISLANDER</b>											
# Births (all ages)	1,747	1,875	2,041	2,104	2,281	2,524	2,614	2,805	3,136	3,412	3,425
# Births to teenagers	73	92	100	104	96	107	92	96	92	103	113
% Births to teenagers	4.2	5.8	4.9	4.9	4.2	4.2	3.5	3.4	2.9	3.0	3.2

<sup>1</sup>Includes records for ethnic groups other than White Non-Hispanic, Hispanic or Latino, Black or African American, American Indian or Alaska Native or Asian or Pacific Islander

<sup>2</sup> Urban = Maricopa, Pima, Pinal, and Yuma. The remaining counties comprise Arizona's rural areas.

**TABLE 11  
BIRTH RATES BY AGE GROUP FOR FEMALES 19 OR YOUNGER,  
ARIZONA AND UNITED STATES, 1998-2008**

Year	Under 15 Years		15 - 19 Years Old					
			Total		15-17 Years		18-19 Years	
	AZ	U.S.	AZ	U.S.	AZ	U.S.	AZ	U.S.
1998	1.4	1.0	73.9	51.1	47.0	30.4	114.9	82.0
1999	1.4	0.9	72.9	49.6	43.7	28.7	117.1	80.3
2000	1.2	0.9	67.6	48.5	41.1	27.4	105.7	78.1
2001	1.0	0.8	63.3	45.3	37.8	24.7	99.9	76.1
2002	1.0	0.7	59.7	43.0	35.5	23.2	94.3	72.7
2003	1.0	0.6	59.2	41.6	35.9	22.4	92.5	70.7
2004	0.9	0.7	58.2	41.1	35.8	22.1	90.2	70.0
2005	0.9	0.7	56.5	40.5	34.1	21.4	88.4	69.9
2006	0.8	0.6	59.6	41.9	34.0	22.0	100.2	73.0
2007	0.8	NA	59.5	NA	32.3	NA	105.1	NA
2008	0.7	NA	54.9	NA	30.3	NA	96.3	NA

Note: The U.S. data is from the National Vital Statistics reports published by the National Center for Health Statistics.



TABLE 12  
 REPEAT PREGNANCIES AMONG TEENAGE MOTHERS GIVING BIRTH BY AGE AND YEAR, ARIZONA, 1998-2008

Mother's age	Pregnancies	1998 1999 2000 2001 2002 2003 2004 2005 2006 2007 2008													
11	Total	0	0	0	0	1	1	0	0	0	0	0	0	0	1
	Previous pregnancies	0	0	0	0	1	1	0	0	0	0	0	0	0	1
	One or more	0	0	0	0	0	0	0	0	0	0	0	0	0	0
12	Unknown	0	0	0	0	0	0	0	0	0	0	0	0	0	0
	Total	5	2	4	3	5	3	3	3	2	4	3	2	4	3
	Previous pregnancies	4	2	4	3	5	3	3	3	2	2	4	2	4	3
13	One or more	1	0	0	0	0	0	0	0	1	0	0	1	0	0
	Unknown	0	0	0	0	0	0	0	0	0	0	0	0	0	0
	Total	34	36	37	28	22	26	31	22	25	20	16	22	25	16
14	Previous pregnancies	33	36	35	28	21	25	30	22	25	20	16	22	25	16
	One or more	1	0	2	0	0	1	1	0	0	0	0	0	0	0
	Unknown	0	0	0	0	1	0	0	0	0	0	0	0	0	0
15	Total	195	200	175	167	178	181	154	160	143	156	141	160	143	141
	Previous pregnancies	186	189	172	157	167	176	151	155	140	154	138	155	140	138
	One or more	9	11	3	10	11	5	3	5	3	2	3	5	3	3
16	Unknown	0	0	0	0	0	0	0	0	0	0	0	0	0	0
	Total	651	595	647	620	512	587	566	603	593	604	570	603	593	570
	Previous pregnancies	597	559	604	569	470	551	538	559	558	553	553	559	558	553
17	One or more	51	35	36	49	41	36	25	44	35	51	17	44	35	51
	Unknown	3	1	3	2	1	0	3	0	0	0	0	0	0	0
	Total	1,443	1,388	1,376	1,353	1,336	1,314	1,389	1,317	1,448	1,360	1,250	1,317	1,448	1,250
18	Previous pregnancies	1,261	1,207	1,205	1,171	1,169	1,144	1,228	1,167	1,290	1,199	1,146	1,167	1,290	1,146
	One or more	175	177	163	176	166	168	159	150	158	161	104	150	158	104
	Unknown	7	4	8	6	1	2	2	0	0	0	0	0	0	0
19	Total	2,303	2,253	2,261	2,107	2,104	2,209	2,272	2,259	2,409	2,397	2,331	2,259	2,409	2,331
	Previous pregnancies	1,831	1,772	1,806	1,634	1,658	1,729	1,838	1,791	1,905	1,895	1,983	1,791	1,905	1,895
	One or more	463	475	447	464	437	475	427	468	502	502	348	468	502	348
20	Unknown	9	6	8	9	9	5	7	0	2	0	0	0	2	0
	Total	3,153	3,300	3,338	3,168	3,208	3,211	3,208	3,351	3,523	3,661	3,376	3,351	3,523	3,376
	Previous pregnancies	2,138	2,247	2,313	2,161	2,231	2,209	2,250	2,411	2,519	2,645	2,576	2,411	2,519	2,576
21	One or more	1,002	1,041	1,014	988	967	996	954	940	1,004	1,016	799	940	1,004	799
	Unknown	13	12	11	19	10	6	4	0	0	0	1	0	0	1
	Total	3,911	4,189	4,351	4,344	4,108	4,168	4,240	4,218	4,773	4,770	4,473	4,218	4,773	4,473
22	Previous pregnancies	2,284	2,485	2,627	2,597	2,496	2,592	2,556	2,631	2,961	2,980	3,065	2,631	2,961	3,065
	One or more	1,606	1,680	1,706	1,735	1,595	1,567	1,681	1,586	1,812	1,790	1,407	1,586	1,812	1,407
	Unknown	21	24	18	12	17	9	3	1	0	0	1	1	0	1

**TABLE 13  
CUMULATIVE NUMBER OF MOTHERS WHO WERE 19 OR YOUNGER IN ARIZONA IN 2008**

Year Baby Was Born	MOTHER'S AGE WHEN BABY WAS BORN										Mother was 19 or younger in 2008	
	10	11	12	13	14	15	16	17	18	19		
1999	0											0
2000	0	0										0
2001	0	0	3									3
2002	0	1	5	22								28
2003	0	1	3	26	181							211
2004	0	0	3	31	154	566						754
2005	0	0	3	22	160	603	1,317					2,105
2006	0	0	2	25	143	593	1,448	2,409				4,620
2007	0	0	4	20	156	604	1,360	2,397	3,661			8,202
2008	0	1	3	16	141	570	1,250	2,331	3,376	4,473		12,161
<b>Cumulative number of mothers 19 or younger</b>	<b>0</b>	<b>3</b>	<b>26</b>	<b>162</b>	<b>935</b>	<b>2,936</b>	<b>5,375</b>	<b>7,137</b>	<b>7,037</b>	<b>4,473</b>		<b>28,084</b>

NOTE: The above table focuses on the 2008 cohort of Arizona mothers who were 19 or younger that year.

Among them are those who:

gave birth to the 12,161 babies in 2008.

gave birth to a baby prior to 2008 and were still 19 or less years old in 2008.

The numbers below the main diagonal (and below the stair-like line) represent the number of mothers meeting either one of the above criteria. The last column to the right gives the cumulative total for 2008 by the year the baby was born. For example, from among those girls and adolescents who had their baby in 2002, 28 remained in their teens in 2008. The bottom row gives the cumulative total by mother's age when the baby was born. For example, among the 28,084 mothers under 20 in Arizona in 2008, 162 had given birth when 13 years old.

Excluded from the cumulative totals and not shown above the main diagonal (and above stair-like line) are the number of mothers who were 19 years old or younger when the baby was born, but who were no longer under the age 20 by 2008. For example, mothers who were 12 years old in 1999 were 21 years old in 2008.

The figures in Table 26 are unadjusted for in-and-out migration, as well as mortality of mothers, in the period of 1998-2008. For simplicity, the number of mothers = the number of babies (i.e., no adjustment was made for multiple birth events).

**TABLE 14**  
**TRENDS IN TEEN PREGNANCY RATES BY RACE/ETHNICITY AND AGE GROUP**  
**(INCLUDING REVISED\* RATES FOR 1998-1999), ARIZONA, 1998-2008**

		All 19 years or younger	10-14 years	15-19 years	15-17 years	18-19 years
<b>White non-Hispanic</b>	<b>1998</b>	28.8	0.8	56.5	32.9	91.2
	<b>1999</b>	25.6	0.6	50.6	26.6	84.8
	<b>2000</b>	25.2	0.7	49.9	25.1	85.0
	<b>2001</b>	21.1	0.5	41.9	20.8	71.0
	<b>2002</b>	20.1	0.4	40.0	20.2	67.9
	<b>2003</b>	18.2	0.4	36.3	17.5	62.9
	<b>2004</b>	17.7	0.3	35.3	16.9	61.2
	<b>2005</b>	15.8	0.3	31.6	14.9	55.1
	<b>2006</b>	18.9	0.4	37.2	17.2	68.6
	<b>2007</b>	19.0	0.9	36.3	15.6	70.3
<b>2008</b>	17.5	0.3	34.1	14.9	65.3	
<b>Hispanic or Latino</b>	<b>1998</b>	67.1	3.4	131.1	93.0	185.0
	<b>1999</b>	63.0	3.1	125.0	85.5	179.9
	<b>2000</b>	60.9	2.7	123.0	84.0	178.4
	<b>2001</b>	59.1	2.5	119.5	79.7	176.0
	<b>2002</b>	57.6	2.5	116.6	77.0	172.8
	<b>2003</b>	57.5	2.6	116.2	76.5	172.7
	<b>2004</b>	59.2	2.3	120.1	79.7	177.4
	<b>2005</b>	55.5	2.2	112.5	72.9	168.9
	<b>2006</b>	56.0	1.9	117.3	72.7	188.1
	<b>2007</b>	55.3	1.9	116.8	68.5	201.2
<b>2008</b>	49.4	1.7	104.4	62.7	177.2	
<b>Black or African American</b>	<b>1998</b>	50.3	2.6	101.3	65.2	154.7
	<b>1999</b>	45.8	2.6	93.6	57.8	146.9
	<b>2000</b>	51.9	2.4	107.3	64.2	171.7
	<b>2001</b>	45.1	2.2	93.1	57.5	146.0
	<b>2002</b>	42.5	2.4	87.5	47.0	148.0
	<b>2003</b>	45.4	1.2	94.9	59.8	147.5
	<b>2004</b>	44.2	1.6	91.8	53.0	149.8
	<b>2005</b>	43.5	1.6	89.0	51.6	144.8
	<b>2006</b>	32.6	1.4	67.2	36.1	118.1
	<b>2007</b>	36.1	2.3	73.9	36.9	144.1
<b>2008</b>	37.7	1.6	78.1	37.2	155.7	
<b>American Indian or Alaska Native</b>	<b>1998</b>	42.5	2.2	87.4	55.3	141.0
	<b>1999</b>	38.0	2.7	78.0	47.6	128.2
	<b>2000</b>	41.3	1.6	86.7	52.1	144.4
	<b>2001</b>	36.7	1.4	77.2	43.5	133.0
	<b>2002</b>	36.6	1.3	77.0	45.1	130.1
	<b>2003</b>	39.9	2.5	82.9	52.0	134.2
	<b>2004</b>	39.7	1.4	83.6	53.2	134.2
	<b>2005</b>	40.8	1.5	85.8	55.0	137.0
	<b>2006</b>	36.2	1.1	71.1	41.5	119.8
	<b>2007</b>	39.1	2.0	73.8	42.4	124.9
<b>2008</b>	35.5	1.4	67.4	38.1	115.2	
<b>Asian or Pacific Islander</b>	<b>1998</b>	18.5	0.6	35.0	23.1	50.7
	<b>1999</b>	17.8	0.5	33.6	17.0	54.6
	<b>2000</b>	21.3	0.3	39.8	21.4	62.4
	<b>2001</b>	20.3	0.0	38.2	22.8	57.0
	<b>2002</b>	19.1	0.3	35.7	14.6	61.6
	<b>2003</b>	19.2	0.2	35.5	22.0	52.1
	<b>2004</b>	19.3	0.6	36.2	20.2	55.0
	<b>2005</b>	16.2	0.3	30.4	16.2	47.6
	<b>2006</b>	12.9	0.8	25.7	13.0	45.0
	<b>2007</b>	15.3	0.7	31.1	12.0	62.2
<b>2008</b>	13.5	0.5	27.6	11.6	53.5	

\*The pregnancy rates for 1998-1999 were revised using the population denominators that are consistent with both the 1990 and the 2000 census. The populations estimated previously from the 1990 census underestimated the growth of the Hispanic population during the 1990s. The revised rates differ from those previously published for 1998-1999.

**TABLE 15**  
**TRENDS IN SEXUALLY TRANSMITTED INFECTIONS BY AGE GROUP AND YEAR AMONG FEMALES 10-19 YEARS,**  
**ARIZONA, 1998-2008**

	1998	1999	2000	2001	2002	2003	2004	2005	2006	2007	2008
<b>10-14 years old</b>											
<b>Diagnosed with:</b>											
<b>Gonorrhea</b>	32	36	32	37	22	31	36	40	40	32	19
<b>Chlamydia</b>	194	213	207	223	191	169	188	210	224	278	249
<b>Early syphilis</b>	0	2	2	2	0	0	0	0	0	1	1
<b>Genital herpes</b>	6	3	6	7	2	2	5	5	7	10	11
<b>Gave birth that year</b>	0	0	0	0	0	0	0	0	0	0	0
<b>Total reported infections</b>	232	254	247	269	215	202	229	255	271	321	280
<b>15-19 years old</b>											
<b>Diagnosed with:</b>											
<b>Gonorrhea</b>	551	588	565	535	469	503	538	721	804	709	468
<b>Chlamydia</b>	3,624	3,753	3,726	4,046	4,024	3,475	4,400	5,451	6,188	6,600	6,595
<b>Early syphilis</b>	15	18	22	24	23	25	19	13	16	25	8
<b>Genital herpes</b>	115	112	118	121	135	90	121	128	143	136	148
<b>Gave birth that year</b>	27	26	41	30	35	27	28	31	43	38	53
<b>Total reported infections</b>	4,305	4,471	4,431	4,726	4,651	4,093	5,078	6,313	7,151	7,470	7,219

Note: Information about the number of reported cases of gonorrhea, chlamydia, early syphilis and genital herpes was provided by STD Program in the Office of Infectious Diseases (see Table 3B-3 in the Arizona Health Status and Vital Statistics annual reports). Information about females who gave birth while infected with genital herpes is collected on birth certificates.

**TABLE 16**  
**TRENDS IN THE INCIDENCE RATES\* OF SEXUALLY TRANSMITTED INFECTIONS BY AGE GROUP AND YEAR AMONG**  
**FEMALES 10-19 YEARS, ARIZONA, 1998-2008**

	1998	1999	2000	2001	2002	2003	2004	2005	2006	2007	2008
<b>10-14 years old</b>											
<b>Diagnosed with:</b>											
<b>Gonorrhea</b>	19.8	21.3	17.4	19.5	11.2	15.4	17.2	18.5	17.9	14.4	8.4
<b>Chlamydia</b>	119.8	126.0	112.5	122.6	97.5	83.7	90.1	97.1	100.3	125.1	110.3
<b>Early syphilis</b>	0.0	1.2	1.0	1.1	0.0	0.0	0.0	9.0	0.0	0.5	0.4
<b>Genital herpes</b>	3.7	1.8	3.3	3.7	1.0	1.0	2.4	2.3	3.1	4.5	4.9
<b>Total reported infections</b>	143.3	150.3	134.2	146.9	109.7	100.1	109.7	126.9	121.3	144.5	124.0
<b>15-19 years old</b>											
<b>Diagnosed with:</b>											
<b>Gonorrhea</b>	355.5	365.2	319.2	292.4	248.2	259.3	267.7	346.5	376.2	329.6	214.1
<b>Chlamydia</b>	2381.1	2331.1	2104.5	2211.5	2129.1	1791.2	2189.1	2619.4	2895.7	3068.6	3017.7
<b>Early syphilis</b>	9.7	11.2	12.4	13.1	12.2	12.9	9.5	6.2	7.5	11.6	3.7
<b>Genital herpes</b>	74.2	69.6	66.7	66.1	71.4	46.4	60.3	61.5	66.9	63.2	67.7
<b>Gave birth that year (%)</b>	23.5	23.2	34.7	24.8	25.9	30.0	23.1	24.2	30.1	27.9	35.8
<b>Total reported infections</b>	2820.5	2777.1	2502.8	2583.1	2460.9	2109.8	2526.6	3033.6	3346.3	3473.1	3303.2

\* Number of cases per 100,000 females in specified age group. The incidence rates of genital herpes among females who gave birth that year are per 100 births.

**TABLE 17  
PREGNANCIES AND PREGNANCY RATES, FEMALES 19 OR YOUNGER  
BY COUNTY OF RESIDENCE, ARIZONA, 2008**

County of residence	NUMBER OF PREGNANCIES:*				
	All 19 years or younger	10-14 years	15-19 years		
			Total 15-19 years	15-17 years	18-19 years
Apache	194	3	191	57	134
Cochise	268	4	264	86	178
Coconino	301	4	297	99	198
Gila	172	2	170	63	107
Graham	109	3	106	29	77
Greenlee	24	0	24	10	14
Maricopa	8,574	147	8,427	2,967	5,460
Mohave	340	0	340	98	242
Navajo	381	7	374	128	246
Pima	1,974	30	1,944	632	1,312
Pinal	653	9	644	228	416
Santa Cruz	126	2	124	48	76
Yavapai	341	5	336	109	227
Yuma	545	14	531	169	362
La Paz	43	0	43	16	27
<b>TOTAL STATE</b>	<b>14,047</b>	<b>230</b>	<b>13,817</b>	<b>4,740</b>	<b>9,077</b>

County of residence	PREGNANCY RATES:**				
	All 19 years or younger	10-14 years	15-19 years		
			Total 15-19 years	15-17 years	18-19 years
Apache	25.3	0.8	47.8	22.8	89.5
Cochise	27.2	0.8	51.8	27.1	92.4
Coconino	28.6	0.8	51.4	32.6	72.2
Gila	45.9	1.1	89.0	49.8	165.9
Graham	33.2	2.1	57.9	28.5	94.7
Greenlee	33.2	0.0	74.5	46.1	133.3
Maricopa	32.5	1.1	66.9	36.8	120.0
Mohave	28.1	0.0	58.5	24.3	135.7
Navajo	36.3	1.4	70.3	36.5	135.7
Pima	29.0	0.9	54.7	31.0	86.5
Pinal	31.3	0.8	64.0	34.3	121.8
Santa Cruz	31.5	1.0	60.7	35.2	111.6
Yavapai	26.9	0.8	51.8	25.8	100.1
Yuma	35.1	1.8	68.5	35.4	121.7
La Paz	38.6	0.0	80.4	44.2	156.1
<b>TOTAL STATE</b>	<b>31.6</b>	<b>1.0</b>	<b>63.2</b>	<b>34.6</b>	<b>111.3</b>

\* The sum of live births, fetal deaths and abortions.

\*\* Includes records with unknown county of residence.

\*\*\* The number of pregnancies per 1,000 females in specified group.

**TABLE 18**  
**BIRTHS AND BIRTH RATES, FEMALES 19 OR YOUNGER BY COUNTY OF RESIDENCE,**  
**ARIZONA, 2008**

County of residence	NUMBER OF BIRTHS:				
	All 19 years or younger	10-14 years	15-19 years		
			Total 15-19 years	15-17 years	18-19 years
Apache	191	2	189	57	132
Cochise	249	4	245	82	163
Coconino	257	4	253	89	164
Gila	169	2	167	63	104
Graham	102	3	99	25	74
Greenlee	23	0	23	10	13
Maricopa	7,210	93	7,117	2,550	4,567
Mohave	331	0	331	93	238
Navajo	364	7	357	119	238
Pima	1,654	18	1,636	524	1,112
Pinal	618	7	611	219	392
Santa Cruz	122	2	120	47	73
Yavapai	300	5	295	94	201
Yuma	531	14	517	163	354
La Paz	40	0	40	16	24
<b>TOTAL STATE</b>	<b>12,161</b>	<b>161</b>	<b>12,000</b>	<b>4,151</b>	<b>7,849</b>

County of residence	BIRTH RATES:**				
	All 19 years or younger	10-14 years	15-19 years		
			Total 15-19 years	15-17 years	18-19 years
Apache	24.9	0.5	47.3	22.8	88.1
Cochise	25.2	0.8	48.1	25.9	84.6
Coconino	24.4	0.8	43.8	29.3	59.8
Gila	45.1	1.1	87.4	49.8	161.2
Graham	31.0	2.1	54.1	24.6	91.0
Greenlee	31.9	0.0	71.4	46.1	123.8
Maricopa	27.4	0.7	56.5	31.7	100.3
Mohave	27.3	0.0	56.9	23.1	133.5
Navajo	34.7	1.4	67.1	33.9	131.3
Pima	24.3	0.6	46.0	25.7	73.3
Pinal	29.6	0.6	60.7	32.9	114.8
Santa Cruz	30.5	1.0	58.7	34.5	107.2
Yavapai	23.6	0.8	45.5	22.3	88.6
Yuma	34.2	1.8	66.7	34.1	119.0
La Paz	35.9	0.0	74.8	44.2	138.7
<b>TOTAL STATE</b>	<b>27.4</b>	<b>0.7</b>	<b>54.9</b>	<b>30.3</b>	<b>96.3</b>

\*\* The number of births per 1,000 females in specified group.

**TABLE 19  
PREGNANCY RATES<sup>1</sup> AND NUMBER OF LIVE BIRTHS, FETAL DEATHS AND  
ABORTIONS TO TEENS BY INDIVIDUAL AGE, ARIZONA, 2008**

Age	Population	PREGNANCIES BY OUTCOME			TOTAL PREGNANCIES	
		Live births	Induced terminations of pregnancy (or abortions)	Spontaneous fetal losses	Number	Rate
10	44,782	0	0	0	0	0.0
11	44,905	1	1	0	2	0.0
12	44,965	3	0	0	3	0.1
13	45,457	16	22	0	38	0.8
14	45,541	141	44	2	187	4.1
10-14	225,650	161	67	2	230	1.0
15	46,028	570	102	2	674	14.6
16	46,516	1,250	178	11	1,439	30.9
17	44,478	2,331	287	9	2,627	59.1
15-17	137,022	4,151	567	22	4,740	34.6
18	41,277	3,376	526	21	3,923	95.0
19	40,246	4,473	653	28	5,154	128.1
18-19	81,523	7,849	1,179	49	9,077	111.3
<b>Total 10-19</b>	<b>444,195</b>	<b>12,161</b>	<b>1,813</b>	<b>73</b>	<b>14,047</b>	<b>31.6</b>

<sup>1</sup>Rates per 1,000 female population in specific group.



**TABLE 20  
BIRTHS TO FEMALES 19 OR YOUNGER BY AGE AND COUNTY OF RESIDENCE,  
ARIZONA, 2008**

	Total	Mother's age								
		11	12	13	14	15	16	17	18	19
<b>TOTAL</b>	12,161	1	3	16	141	570	1,250	2,331	3,376	4,473
<b>Apache</b>	191	0	0	0	2	8	19	30	59	73
<b>Cochise</b>	249	1	0	0	3	10	23	49	74	89
<b>Coconino</b>	257	0	1	1	2	18	28	43	81	83
<b>Gila</b>	169	0	0	0	2	4	22	37	49	55
<b>Graham</b>	102	0	0	1	2	2	2	21	31	43
<b>Geenlee</b>	23	0	0	0	0	0	3	7	3	10
<b>Maricopa</b>	7,210	0	1	10	82	353	805	1,392	1,997	2,570
<b>Mohave</b>	331	0	0	0	0	11	28	54	89	149
<b>Navajo</b>	364	0	0	1	6	15	28	76	110	128
<b>Pima</b>	1,654	0	0	0	18	82	134	308	453	659
<b>Pima</b>	618	0	0	0	7	32	66	121	161	231
<b>Santa Cruz</b>	122	0	0	0	2	2	14	31	28	45
<b>Yavapai</b>	300	0	0	0	5	10	29	55	73	128
<b>Yuma</b>	531	0	1	3	10	23	42	98	157	197
<b>La Paz</b>	40	0	0	0	0	0	7	9	11	13

**TABLE 21**  
**ABORTIONS TO FEMALES 19 OR YOUNGER BY AGE AND COUNTY OF RESIDENCE,**  
**ARIZONA, 2008**

	Total	11	12	13	14	15	16	17	18	19
<b>TOTAL</b>	1,813	1	0	22	44	102	178	287	526	653
<b>Apache</b>	1	0	0	1	0	0	0	0	0	0
<b>Cochise</b>	18	0	0	0	0	0	2	2	8	6
<b>Coconino</b>	44	0	0	0	0	1	3	6	18	16
<b>Gila</b>	3	0	0	0	0	0	0	0	3	0
<b>Graham</b>	6	0	0	0	0	1	2	1	1	1
<b>Greenlee</b>	1	0	0	0	0	0	0	0	0	1
<b>Maricopa</b>	1,316	0	0	20	33	76	133	190	381	483
<b>Mohave</b>	9	0	0	0	0	0	0	5	1	3
<b>Navajo</b>	14	0	0	0	0	0	2	5	4	3
<b>Pima</b>	312	1	0	1	10	18	29	61	88	104
<b>Pinal</b>	29	0	0	0	1	0	1	7	9	11
<b>Santa Cruz</b>	4	0	0	0	0	0	0	1	2	1
<b>Yavapai</b>	41	0	0	0	0	4	5	6	9	17
<b>Yuma</b>	11	0	0	0	0	2	0	3	2	4
<b>La Paz</b>	3	0	0	0	0	0	0	0	0	3
<b>Unknown</b>	1	0	0	0	0	0	1	0	0	0

**TABLE 22**  
**SOURCES OF PAYMENT FOR LABOR AND DELIVERY, FEMALES 19 OR YOUNGER**  
**BY AGE AND COUNTY OF RESIDENCE, ARIZONA, 2008**

	Total	AHCCCS	IHS	Private insurance	Self	Unknown
<b>TOTAL</b>	12,161	9,921	380	1,510	249	101
<b>Apache</b>	191	95	65	3	1	27
<b>Cochise</b>	249	204	1	38	6	0
<b>Coconino</b>	257	179	63	11	2	2
<b>Gila</b>	169	105	47	14	3	0
<b>Graham</b>	102	72	16	13	0	1
<b>Greenlee</b>	23	14	0	9	0	0
<b>Maricopa</b>	7,210	6,071	38	930	134	37
<b>Mohave</b>	331	274	2	29	9	17
<b>Navajo</b>	364	245	92	23	2	2
<b>Pima</b>	1,654	1,351	38	225	37	3
<b>Pinal</b>	618	463	11	122	15	7
<b>Santa Cruz</b>	122	104	0	10	8	0
<b>Yavapai</b>	300	263	1	28	8	0
<b>Yuma</b>	531	459	0	49	23	0
<b>La Paz</b>	40	22	6	6	1	5

**TABLE 23**  
**SOURCES OF PAYMENT FOR LABOR AND DELIVERY, FEMALES 19 OR YOUNGER**  
**BY AGE GROUP, ARIZONA, 2008**

		Total	Mother's age group			
			<15	15-17	18-19	
<b>Total</b>	<b>Count</b>	12,161	161	4,151	7,849	
<b>Payee for births</b>	<b>AHCCCS</b>	<b>Count</b>	9,921	135	3,384	6,402
		<b>Percent</b>	81.6	83.9	81.5	81.6
	<b>IHS</b>	<b>Count</b>	380	7	140	233
		<b>Percent</b>	3.1	4.3	3.4	3.0
	<b>Private insurance</b>	<b>Count</b>	1,510	11	492	1,007
		<b>Percent</b>	12.4	6.8	11.9	12.8
	<b>Self</b>	<b>Count</b>	249	7	106	136
		<b>Percent</b>	2.0	4.3	2.6	1.7
	<b>Unknown</b>	<b>Count</b>	101	1	29	71
		<b>Percent</b>	0.8	0.6	0.7	0.9

**TABLE 24  
TEENAGE BIRTHS BY NUMBER OF PREVIOUS PREGNANCIES BY AGE GROUP,  
ARIZONA, 2008**

		Total	Mother's age group			
			<15	15-17	18-19	
<b>Total</b>	<b>Count</b>	12,161	161	4,151	7,849	
<b>Total prior pregnancies</b>	<b>None</b>	<b>Count</b>	9,481	158	3,682	5,641
		<b>Percent</b>	78.0	98.1	88.7	71.9
	<b>1</b>	<b>Count</b>	2,271	3	428	1,840
		<b>Percent</b>	18.7	1.9	10.3	23.4
	<b>2</b>	<b>Count</b>	354	0	35	319
		<b>Percent</b>	2.9	0.0	0.8	4.1
	<b>3</b>	<b>Count</b>	50	0	5	45
		<b>Percent</b>	0.4	0.0	0.1	0.6
	<b>4 or more</b>	<b>Count</b>	4	0	1	3
		<b>Percent</b>	0.0	0.0	0.0	0.0
	<b>Unknown</b>	<b>Count</b>	1	0	0	1
		<b>Percent</b>	0.0	0.0	0.0	0.0

**TABLE 25  
TEENAGE BIRTHS BY MARITAL STATUS AND AGE GROUP,  
ARIZONA, 2008**

		Total	Mother's age group			
			<15	15-17	18-19	
<b>Total</b>	<b>Count</b>	12,161	161	4,151	7,849	
<b>Marital status</b>	<b>Married</b>	<b>Count</b>	1,486	2	243	1,241
		<b>Percent</b>	12.2	1.2	5.9	15.8
	<b>Unmarried</b>	<b>Count</b>	10,652	159	3,903	6,590
		<b>Percent</b>	87.6	98.8	94.0	84.0
	<b>Other</b>	<b>Count</b>	23	0	5	18
		<b>Percent</b>	0.2	0.0	0.1	0.2

**TABLE 26  
TEENAGE BIRTHS BY MOTHER'S EDUCATION AND AGE GROUP  
ARIZONA, 2008**

		Total	Mother's age group			
			<15	15-17	18-19	
<b>Total</b>	<b>Count</b>	12,161	161	4,151	7,849	
<b>Mother's education</b>	<b>&lt; 8</b>	<b>Count</b>	356	35	131	190
		<b>Percent</b>	2.9	21.7	3.2	2.4
	<b>8</b>	<b>Count</b>	621	80	312	229
		<b>Percent</b>	5.1	49.7	7.5	2.9
	<b>9-11</b>	<b>Count</b>	6,241	43	3,123	3,075
		<b>Percent</b>	51.3	26.7	75.2	39.2
	<b>12</b>	<b>Count</b>	4,099	0	536	3,563
		<b>Percent</b>	33.7	0.0	12.9	45.4
	<b>13-16</b>	<b>Count</b>	748	0	14	734
		<b>Percent</b>	6.2	0.0	0.3	9.4
	<b>17+</b>	<b>Count</b>	0	0	0	0
		<b>Percent</b>	0.0	0.0	0.0	0.0
	<b>Unknown</b>	<b>Count</b>	96	3	35	58
		<b>Percent</b>	0.8	1.9	0.8	0.7

**TABLE 27  
TEENAGE BIRTHS BY TRIMESTER OF ENTRY INTO PRENATAL CARE  
AND AGE GROUP, ARIZONA, 2008**

		Total	Mother's age group			
			<15	15-17	18-19	
<b>Total</b>	<b>Count</b>	12,161	161	4,151	7,849	
<b>Prenatal care</b>	<b>No care</b>	<b>Count</b>	314	7	133	174
		<b>Percent</b>	2.6	4.3	3.2	2.2
	<b>1st trimester</b>	<b>Count</b>	8,183	76	2,636	5,471
		<b>Percent</b>	67.3	47.2	63.5	69.7
	<b>2nd trimester</b>	<b>Count</b>	2,947	54	1,124	1,769
		<b>Percent</b>	24.2	33.5	27.1	22.5
	<b>3rd trimester</b>	<b>Count</b>	706	24	252	430
		<b>Percent</b>	5.8	14.9	6.1	5.5
	<b>Unknown</b>	<b>Count</b>	11	0	6	5
		<b>Percent</b>	0.1	0.0	0.1	0.1

**TABLE 28  
TEENAGE BIRTHS BY NUMBER OF PRENATAL VISITS AND AGE GROUP,  
ARIZONA, 2008**

		Total	Mother's age group			
			<15	15-17	18-19	
<b>Total</b>	<b>Count</b>	12,161	161	4,151	7,849	
<b>Prenatal visits</b>	<b>No visits</b>	<b>Count</b>	314	7	133	174
		<b>Percent</b>	2.6	4.3	3.2	2.2
	<b>1-4 visits</b>	<b>Count</b>	694	19	245	430
		<b>Percent</b>	5.7	11.8	5.9	5.5
	<b>5-8 visits</b>	<b>Count</b>	2,800	52	1,039	1,709
		<b>Percent</b>	23.0	32.3	25.0	21.8
	<b>9-12 visits</b>	<b>Count</b>	5,643	49	1,826	3,768
		<b>Percent</b>	46.4	30.4	44.0	48.0
	<b>13+ visits</b>	<b>Count</b>	2,694	34	901	1,759
		<b>Percent</b>	22.2	21.1	21.7	22.4
	<b>Unknown</b>	<b>Count</b>	16	0	7	9
		<b>Percent</b>	0.1	0.0	0.2	0.1

**TABLE 29**  
**TOBACCO AND/OR ALCOHOL USE DURING PREGNANCY AMONG FEMALES**  
**19 OR YOUNGER BY AGE GROUP, ARIZONA, 2008**

		Total	Mother's age group		
			<15	15-17	18-19
<b>Total</b>	<b>Count</b>	12,161	161	4,151	7,849
<b>Substance use</b>	<b>Drinker, nonsmoker</b>	<b>Count</b>	18	0	9
		<b>Percent</b>	0.1	0.0	0.2
	<b>Smoker, nondrinker</b>	<b>Count</b>	562	1	111
		<b>Percent</b>	4.6	0.6	2.7
	<b>Smoker and drinker</b>	<b>Count</b>	18	0	7
		<b>Percent</b>	0.1	0.0	0.2
	<b>Nonsmoker and nondrinker</b>	<b>Count</b>	11,563	160	4,024
		<b>Percent</b>	95.1	99.4	96.9

TABLE 30  
 RISK FOR LOW-BIRTHWEIGHT (LBW) BIRTHS BY SELECTED CHARACTERISTICS OF FEMALES 19 OR YOUNGER,  
 ARIZONA, 2008

	Mother's age group											
	<15					15-17					18-19	
	Total births	LBW births		Total births	LBW births		Total births	LBW births		Total births	LBW births	
	Count	Percent		Count	Percent		Count	Percent		Count	Percent	
Race/ethnicity	White non-Hispanic	15	5	33.3	769	78	10.1	2,209	135	6.1		
	Hispanic or Latino	111	20	18.0	2,724	218	8.0	4,333	299	6.9		
	Black or African American	12	1	8.3	203	34	16.7	441	49	11.1		
	American Indian or Alaska Native	22	2	9.1	408	27	6.6	755	43	5.7		
	Asian or Pacific Islander	1	0	0.0	26	6	23.1	86	5	5.8		
	Unknown	0	0	0.0	21	0	0.0	25	3	12.0		
	Drinker, nonsmoker	0	0	0.0	9	0	0.0	9	2	22.2		
Substance use	Smoker, nondrinker	1	1	100.0	111	16	14.4	450	42	9.3		
	Smoker and drinker	0	0	0.0	7	0	0.0	11	0	0.0		
	Nonsmoker and nondrinker	160	27	16.9	4,024	347	8.6	7,379	490	6.6		
Payee for births	AHCCCS	135	24	17.8	3,384	295	8.7	6,402	441	6.9		
	IHS	7	0	0.0	140	7	5.0	233	9	3.9		
	Private insurance	11	2	18.2	492	43	8.7	1,007	66	6.6		
	Self	7	1	14.3	106	10	9.4	136	15	11.0		
	Unknown	1	1	100.0	29	8	27.6	71	3	4.2		
Length of gestation	36 weeks or less	28	17	60.7	445	249	56.0	722	382	52.9		
	37 weeks or more	133	11	8.3	3,704	113	3.1	7,124	152	2.1		
	Unknown	0	0	0.0	2	1	50.0	3	0	0.0		
Prenatal visits	Less than 5	26	3	11.5	378	67	17.7	604	84	13.9		
	5 or more	135	25	18.5	3,766	292	7.8	7,236	450	6.2		
	Unknown	0	0	0.0	7	4	57.1	9	0	0.0		



**TABLE 31  
POPULATION OF FEMALES 19 OR YOUNGER, NUMBER OF PREGNANCIES AND PREGNANCY  
RATES BY AGE GROUP AND RACE/ETHNICITY, ARIZONA, 2008**

	POPULATION				
	All 19 years or younger	10-14 years	15-19 years	15-17 years	18-19 years
All groups	444,195	225,650	218,545	137,022	81,523
White non-Hispanic	219,503	107,501	112,002	69,453	42,549
Hispanic or Latino	157,066	84,112	72,954	46,394	26,560
Black or African American	21,532	11,364	10,168	6,662	3,506
American Indian or Alaska Native	35,060	16,936	18,124	11,234	6,890
Asian or Pacific Islander	11,034	5,737	5,297	3,279	2,018

Note: Detailed information about the assumptions and specific data sources for 2008 population estimates is available online at <http://www.azdhs.gov/plan/menu/info/pd.htm> .

	NUMBER OF PREGNANCIES				
	All 19 years or younger	10-14 years	15-19 years	15-17 years	18-19 years
All groups	14,047	230	13,817	4,740	9,077
White non-Hispanic	3,852	36	3,816	1,038	2,778
Hispanic or Latino	7,764	146	7,618	2,911	4,707
Black or African American	812	18	794	248	546
American Indian or Alaska Native	1,246	24	1,222	428	794
Asian or Pacific Islander	149	3	146	38	108

	PREGNANCY RATES PER 1,000 FEMALES				
	All 19 years or younger	10-14 years	15-19 years	15-17 years	18-19 years
All groups	31.6	1.0	63.2	34.6	111.3
White non-Hispanic	17.5	0.3	34.1	14.9	65.3
Hispanic or Latino	49.4	1.7	104.4	62.7	177.2
Black or African American	37.7	1.6	78.1	37.2	155.7
American Indian or Alaska Native	35.5	1.4	67.4	38.1	115.2
Asian or Pacific Islander	13.5	0.5	27.6	11.6	53.5

**TABLE 32  
POPULATION OF FEMALES 19 OR YOUNGER BY COUNTY OF RESIDENCE, ARIZONA, 2008**

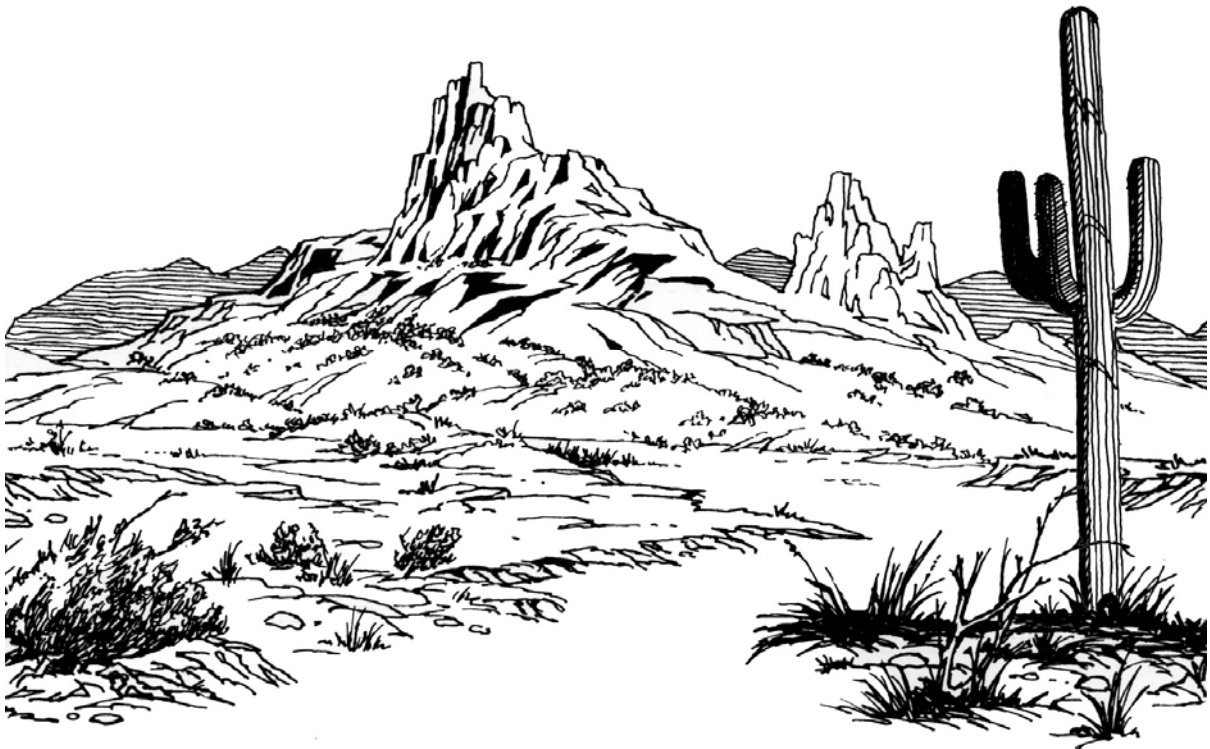
	All 19 years or younger	10-14 years	15-19 years		
			15-19 years	15-17 years	18-19 years
<b>ARIZONA</b>	444,195	225,650	218,545	137,022	81,523
<b>Apache</b>	7,682	3,682	4,000	2,502	1,498
<b>Cochise</b>	9,870	4,773	5,097	3,171	1,926
<b>Coconino</b>	10,521	4,741	5,780	3,038	2,742
<b>Gila</b>	3,747	1,836	1,911	1,266	645
<b>Graham</b>	3,287	1,456	1,831	1,018	813
<b>Greenlee</b>	722	400	322	217	105
<b>La Paz</b>	1,113	578	535	362	173
<b>Maricopa</b>	263,576	137,524	126,052	80,535	45,517
<b>Mohave</b>	12,113	6,297	5,816	4,033	1,783
<b>Navajo</b>	10,499	5,176	5,323	3,510	1,813
<b>Pima</b>	67,977	32,443	35,534	20,365	15,169
<b>Pinal</b>	20,881	10,819	10,062	6,647	3,415
<b>Santa Cruz</b>	4,005	1,962	2,043	1,362	681
<b>Yavapai</b>	12,694	6,209	6,485	4,217	2,268
<b>Yuma</b>	15,508	7,754	7,754	4,779	2,975

**APPENDIX  
HOW TO COMPUTE THE RATES OF FIRST AND REPEAT CHILDBEARING**

	2000	2001	2002	2003	2004	2005	2006	2007	2008	Comments
A. The number of females 15-19 years old	177,114	183,057	188,780	194,127	200,676	208,105	213,698	215,079	218,545	Census enumeration for 2000. Population estimates for 2001-2008.
B. The number of births to females 15-19 years old	11,973	11,591	11,268	11,489	11,676	11,748	12,746	12,792	12,000	Based on the birth database.
C. The rate of births (B/A)*1,000	67.6	63.3	59.7	59.2	58.2	56.5	59.6	59.4	54.9	The number of births per 1,000 females 15-19 years old.
D. Cumulative number of mothers who gave birth when 15-19 years old	26,525	26,231	25,433	25,346	25,568	25,761	26,916	27,486	26,958	Mothers who gave birth when 15-19 years old. As an example, the 2008 cohort of mothers who were 15-19 years old includes 12,000 who gave birth that year and 14,958 who gave birth prior to 2008 and were still 15-19 years old in 2008 (Table 13).
E. The number of females 15-19 years old who had a birth previously (D-B)	14,552	14,640	14,165	13,857	13,892	14,013	14,170	14,694	14,958	The cumulative number of mothers 15-19 years old (Table 13) - those who gave birth that year.
F. The number of repeat births to females 15-19 years old who had a birth previously	2,639	2,680	2,533	2,567	2,590	2,488	2,864	2,800	2,658	Table 1B-24 in "Arizona Health Status and Vital Statistics" annual report.
G. The rate of repeat childbearing (F/E)*1,000	181.3	183.1	178.8	185.2	186.4	177.5	202.1	190.6	177.7	The number of repeat births per 1,000 females 15-19 years old who had a birth previously.
H. The number of females 15-19 years old who did not have a birth previously (A-E)	162,562	168,417	174,615	180,270	186,784	194,092	199,528	200,385	203,587	All 15-19 years old - those who gave birth previously.
I. The number of first-time births to females 15-19 years old who did not have a birth previously	9,285	8,870	8,699	8,922	9,071	9,259	9,880	9,992	9,342	Table 1B-24 in "Arizona Health Status and Vital Statistics" annual report.
J. The rate of first-time births (I/H)*1,000	57.1	52.7	49.8	49.5	48.6	47.7	49.5	49.9	45.9	The number of first-time births per 1,000 females 15-19 years old who did not have a birth previously.



Our Web site at <http://www.azdhs.gov/plan> provides instantaneous access to a wide range of statistical information about health status of Arizonans. The *Arizona Health Status and Vital Statistics* annual report examines trends in natality, mortality, and morbidity towards established health objectives. Additional reports and studies include *Differences in the Health Status Among Race/Ethnic Groups*, *Advance Vital Statistics by County of Residence*, *Mortality from Alzheimer's Disease*, *Injury Mortality among Arizona Residents* (accidents, suicides, homicides, legal intervention, firearm-related fatalities, drug-related deaths, drowning deaths, falls among Arizonans 65 years or older), hospital inpatient and emergency room statistics for *mental disorders, asthma, diabetes, influenza and pneumonia* and *substance abuse*, *Community Vital Statistics*, *Teenage Pregnancy*, *Selected Characteristics of Newborns and Mothers Giving Birth by Census Tract* in Maricopa County, Pima County and South Phoenix Area, *Health Status Profile of American Indians in Arizona*, *Deaths from Exposure to Excessive Natural Heat Occurring in Arizona*, *Obesity in Arizona: Prevalence, Hospital Care Utilization, Mortality, and Marital Status and Health*.



**Health Status and Vital Statistics Section  
Bureau of Public Health Statistics  
ARIZONA DEPARTMENT OF HEALTH SERVICES**